

**Henrico County Public
Schools Redistricting
Feedback January 20, 2020**

Brookland District Comments

Justin M. Briggs (jmbriggs)

From: Christopher A. Sorensen (casorensen)
Sent: Monday, January 13, 2020 9:30 AM
To: LIPPA, KEITH A
Cc: Matthew Cropper; Justin M. Briggs (jmbriggs)
Subject: RE: HCPS Redistricting Feedback - Census Tracts 10314 & 16309

Good morning Mr. Lipa,
I will be glad to send this to the committee members. Have a nice day.

Chris

From: LIPPA, KEITH A <Keith.A.Lippa@dupont.com>
Sent: Friday, January 10, 2020 4:46 PM
To: Christopher A. Sorensen (casorensen) <casorensen@henrico.k12.va.us>
Cc: Matthew Cropper <mcropper@cropper.org>
Subject: HCPS Redistricting Feedback - Census Tracts 10314 & 16309

Use Caution: This message originated outside of Henrico County Public Schools. Use caution when opening attachments, clicking links or responding to requests for information.

Hello, nice meeting you last night. As we discussed, below is a copy of some feedback (including pictures) that I was not able to send via the general feedback form. Could you please send it to the proper folks on the redistricting committee for consideration? I've also attached the document in case there was formatting issues or the graphs/pictures did not come through properly on this e-mail. Thanks.

HCPS Redistricting Committee:

Hi, my name is Keith Lippa, and I represent a small group of communities on the northwest corner of Staples Mill & Hungary Roads that are being impacted by the current redistricting process (Census Tracts 10314 & 16309 from the map below). The subdivisions represented in this message are:

- Staples Mill Trace (10314)
- Dove Hollow (16309)
- Brittany (16309)
- Mountain Cove (16309)
- Hill Trace (16309)
- Twin Oaks (16309)
- Ironwood at Crossridge (16309)



We are a collection of a few small communities, many of which have only 4 to 10 houses in a cul-de-sac, so our neighborhood has very little impact on overall capacity numbers of the schools in which we are placed.

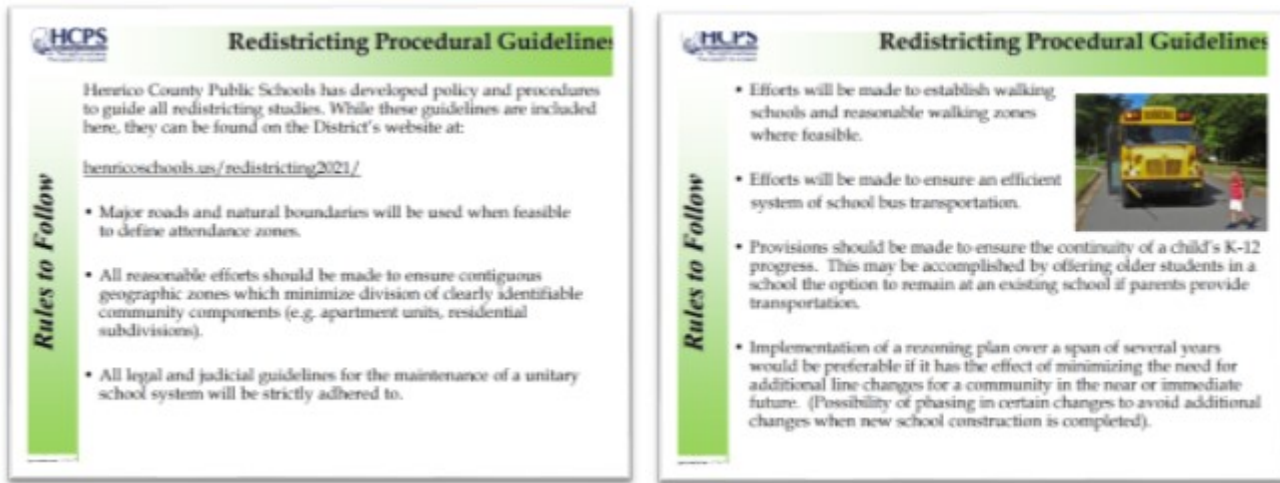
Our proposal is to be redistricted from Longan ES to Echo Lake ES and remain at Hungary Creek MS and Glen Allen HS as we are currently zoned.

Several members from our neighborhood attended the public information session and gallery walk at Godwin HS in November. We learned lots of valuable information while there and enjoyed talking with committee members and providing our thoughts on the process. The committee members asked us to complete the online survey and provide general feedback on the options relative to the Redistricting Procedural Guidelines provided by the school board, which we have done. For reference, our residents were the extremely vocal portion of the Longan Elementary group represented in the Options A & B survey, with our elementary zone having the 3rd highest number of responses in the county.

This is an extremely emotional process for all families involved, and we appreciate each committee member's time and commitment to working through this process. We kindly ask that you consider our feedback and proposals as you develop and modify options.

This message will be broken up to provide some rationale for our neighborhood's concerns and present some options for the committees to remedy those concerns. It will go through each of the Redistricting Guideline points one at a time to provide feedback on how the current options relate to the guidelines from our neighborhood's perspective. These

redistricting guidelines were taken from the HCPS Cropper presentations as shown below. For ease of communication, I've numbered these bulleted guidelines within this message. Proposal options will be given at the end for the committee to consider.



=====

Redistricting Guideline #1: “Major roads and natural boundaries will be used when feasible to define attendance zones.”

Options A & C SUPPORT this guideline for our neighborhood. They use the major roadways of Staples Mill & Hungary Roads as the boundary for Echo Lake ES, Hungary Creek MS, and Glen Allen HS. Both Staples Mill & Hungary Roads are 4-lane roadways with median dividers. Our communities are in full support of these two options because they meet the objective of following major roadways as boundaries whenever possible.

Options B & D do NOT support this guideline at all for our neighborhood. In fact, if either Option B or D is chosen as currently drawn, it would place the boundary line for Echo Lake ES / Dumbarton ES in our back yard and would NOT follow the “Major Roadways” guideline listed above.

As previously mentioned, our communities are located ON Staples Mill and Hungary Roads. We are adjacent to the Crossridge and Lanceor Drive subdivisions on the Staples Mill Road side and to Dunncroft on the Hungary Road side. All our surrounding subdivisions attend Echo Lake ES, Hungary Creek MS, and Glen Allen HS. In fact, if either Option B or D is selected as currently drawn, we would be the ONLY group ON our entire side of Staples Mill and Hungary Roads that would not attend Echo Lake ES or Glen Allen HS. Every other subdivision west of Staples Mill and north of Hungary Roads would attend Echo Lake ES and Glen Allen HS EXCEPT our neighborhood.

Many of us can look out our back yards and see or walk to Crossridge which ultimately backs up against Hungary Creek MS & Glen Allen HS. Echo Lake ES, Hungary Creek MS and Glen Allen HS are all within a few hundred feet of one another, and our proximity to all 3 of these schools is illustrated by the map on page 1 of this message.

In Options B & D, the boundary for Echo Lake ES and Glen Allen HS extends down Staples Mill & Hungary Roads and stops JUST BEFORE our subdivisions instead of continuing to the corner of Staples Mill & Hungary Roads, which are both major 4-lane roadways with medians. Our neighborhood is literally carved out from our surrounding subdivisions with the boundary being between back yards instead of along major roadways. For this reason, we strongly oppose Options B & D as they currently stand because they do not meet the objective of using major roadways as boundaries whenever possible.

=====

Redistricting Guideline #2: “All reasonable efforts should be made to ensure contiguous geographic zones which minimize division of clearly identifiable community components (apartments, residential subdivisions).”

Options A & C SUPPORT this guideline for our neighborhood. Since they use Staples Mill & Hungary Roads as the boundary for Echo Lake ES, Hungary Creek MS, and Glen Allen HS, they keep the contiguous geographic zone north of Hungary Road and west of Staples Mill Road intact. They keep all subdivisions within the Crossridge community together and don't single any neighborhood out.

Options B & D do NOT support this guideline for our neighborhood. Since they use our back yards as the boundary line, they single out our series of extremely small subdivisions from the rest of the Crossridge community. Options B & D do not support a contiguous geographic zone in our area of Glen Allen as currently drawn.

=====

Redistricting Guideline #3: "All legal and judicial guidelines for the maintenance of a unitary school system will be strictly adhered to."

This area of the county is extremely diverse – so all options meet this guideline.

=====

Redistricting Guideline #4: "Efforts will be made to ensure an efficient system of school bus transportation."

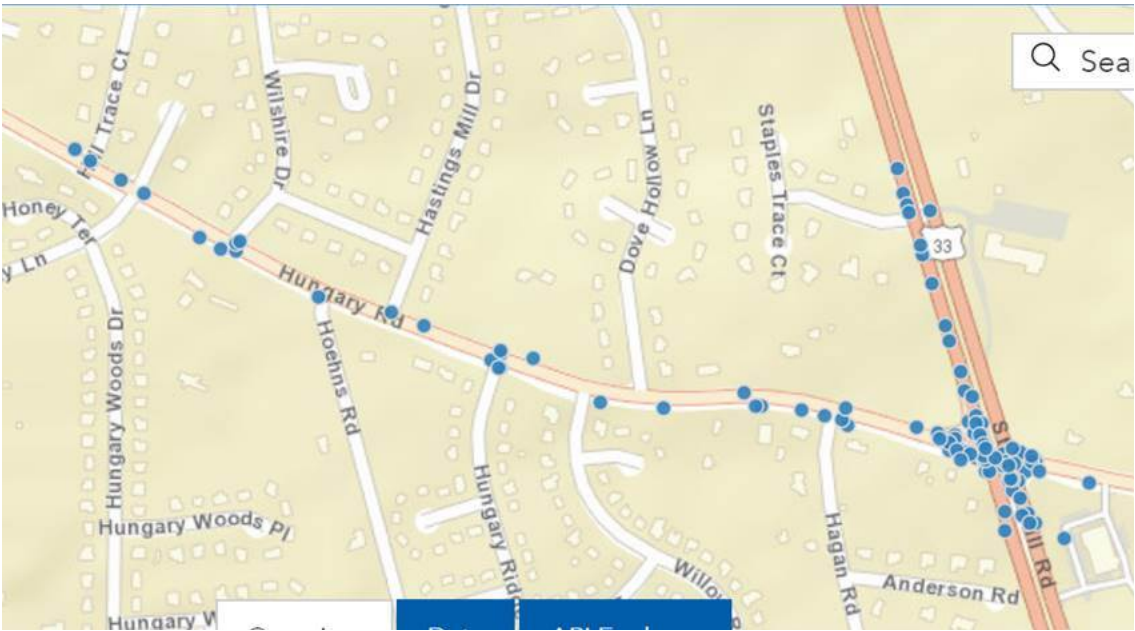
Options A & C SUPPORT this guideline for our neighborhood. School buses would only need to make safe, right-hand turns from our communities onto Staples Mill or Hungary Road and then another right-hand turn at the small, neighborhood intersection of Francistown & Hungary Roads to deliver our children to Echo Lake ES, Hungary Creek MS, and Glen Allen HS.

Options B & D do NOT support this guideline for our neighborhood. Our school buses and student drivers would travel through the dangerous, major intersection of Hungary & Staples Mill Roads then travel through another dangerous, major intersection at Staples Mill & Hungary Spring Roads to deliver our children to Dumbarton ES and Hermitage HS. The commute home from school would require buses and student drivers to travel through the same two major intersections and to face challenges presented by medians, forcing them to either make a U-turn on Staples Mill Road or drive several miles out of the way to avoid doing so.

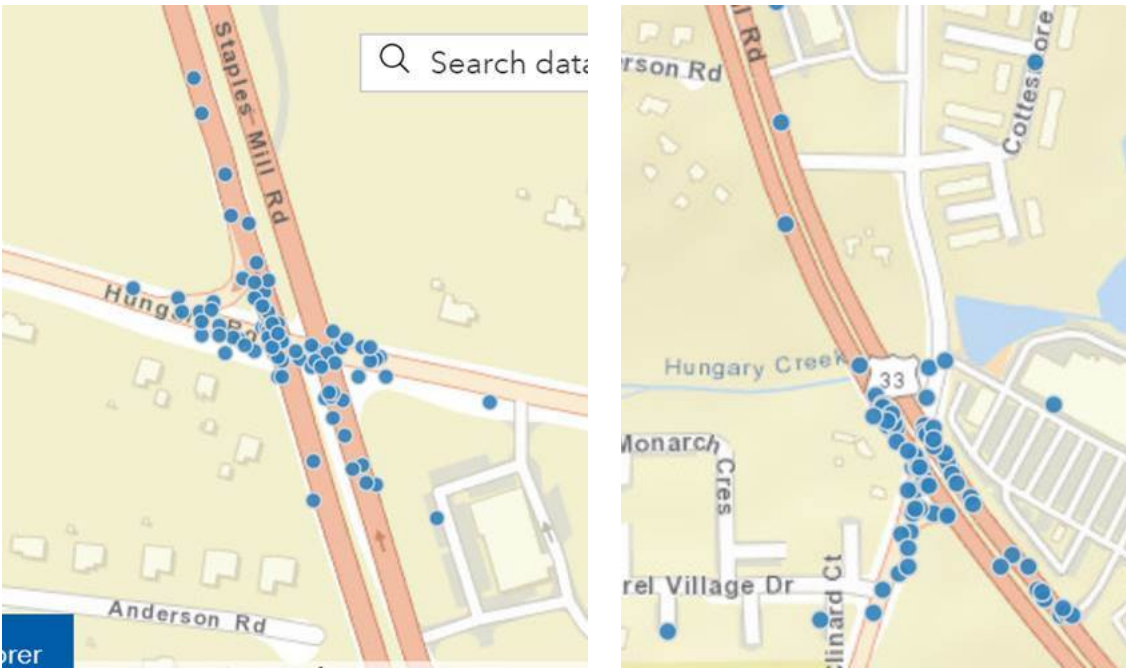
Staples Mill Road is a major 4-lane roadway with a median, and there is no way to access Staples Mill Trace from Dumbarton ES or Hermitage HS unless one makes a U-turn on Staples Mill Road or turns left on Hungary Road, then drives down Francistown Road, then Springfield Road, then back on Staples Mill Road and down toward Hungary Road. Mind you, this route drives right past Echo Lake ES, Hungary Creek MS, and Glen Allen HS just to take our students home. Options B & D pose a huge safety concern for both buses and student drivers and are not an efficient use of school bus transportation.

The other subdivisions along the Hungary Road corridor are in a similar position as Hungary Road is also a major 4-lane roadway with a median divider. Many of our communities are blocked by the median where a left-hand turn out of the subdivision is not even possible. Buses must either travel significantly longer distances or make U-turns on Hungary Road and cross two dangerous intersections to deliver students to Dumbarton ES & Hermitage HS.

Additionally, the "Data Sources for Traffic Volume and Accidents" link posted on the redistricting webpage uses accident data provided by VDOT to illustrate how dangerous these two intersections are. Each dot on the maps below represents an accident that has occurred at these intersections between July 2018 and July 2019. Options B & D would force our students to travel through these intersections at least twice a day in order to get to and from school.



Magnified View of Intersections at Staples Mill/Hungary and Staples Mill/Hungary Spring Roads:



=====

Redistricting Guideline #5: “Efforts will be made to establish walking schools and reasonable walking zones where feasible.”

Options A & C SUPPORT this guideline for our neighborhood. Under Options A & C, our students would attend Glen Allen HS as they do today. As it is only about one mile away, many of our students can reasonably walk to GAHS and NOT have to cross ANY major roadway or intersection.

Options B & D do NOT support this guideline for our neighborhood. Under Options B & D, if our students would like to walk to school (Dumbarton ES or Hermitage HS), they would have to cross two major, dangerous intersections (Staples Mill & Hungary and Staples Mill & Hungary Spring Roads) in order to get to school. This poses a huge safety concern and

risk to our students if either Option B or D is selected in its current state, and realistically, our students would not have a viable option to walk to either of these schools.

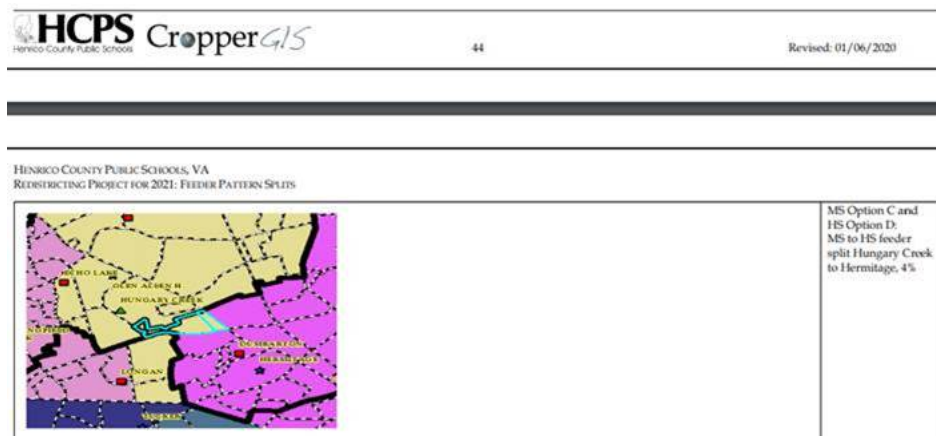
=====

Redistricting Guideline #6: “Provisions should be made to ensure the continuity of a child’s K-12 progress.”

Options A & C SUPPORT this guideline for our neighborhood. Our students would remain with their current middle and high school feeder patterns (Hungary Creek MS to Glen Allen HS), ensuring K-12 continuity. Echo Lake ES feeds into Hungary Creek MS which ultimately feeds into Glen Allen HS.

Options B & D do NOT support this guideline for our neighborhood. Under Option B, our students would be split going to middle school (only 13% of Dumbarton ES would go to Hungary Creek MS in Option B – and of that 13%, our neighborhood only makes up 9%) and then again going to high school (only 13% of Hungary Creek MS would go to Hermitage HS in Option B – and of that 13%, our neighborhood only makes up 3%). Similarly, under Option D, we make up the entire 4% split from Hungary Creek MS to Hermitage HS, meaning ONLY our neighborhood would move from Hungary Creek MS to Hermitage HS in Option D.

This Option D split is shown on Page 45 of the Cropper report Revised 1/6/20 where our neighborhood is specifically called out for an undesirable feeder pattern split. This map illustrates that our students are the only ones to make up this 4% split by being moved away from Glen Allen HS where they currently attend and rezoned to Hermitage HS as both Options B & D propose.



us from Longan ES which is trending up and is at 98% utilization this year to Echo Lake ES. This both provides capacity relief to Longan and increases utilization at Echo Lake – a win for both schools. This move also meets ALL objectives and guidelines set forth by the school board for this redistricting process. Option B places us at Dumbarton ES, essentially replacing the students who would be moved to the expanded Holladay ES, and keeps Dumbarton at 92% utilization. This move not only provides minimal capacity relief to Dumbarton ES, which is currently experiencing tremendous growth, but also opposes a majority of the redistricting guidelines.

=====

Proposals for Resolutions:

Below are some proposals to consider that allow SLIGHT modifications to Options B & D. IF these slight modifications are made, then our neighborhood would support these and any future options.

Our Option 1 Proposal is to SLIGHTLY modify Options B & D as follows:

- Move Census Tracts 40609 (58 students) and 40509 (0) back to Rivers Edge ES where they are currently zoned. This places the boundary for Rivers Edge ES & Springfield Park ES at Cox Road which is a major roadway (supporting Redistricting Guideline #1 above). Since this is where these students currently attend, no students would be impacted as a result of this change.
- Move Census Tracts 40601 (32), 10614 (0), 10616 (3), and 16335 (32) back to Springfield Park ES as they are currently zoned. This keeps all neighborhoods on Springfield Road (north of Nuckols) together as they are zoned today. Additionally, this keeps the Lindsey Lakes subdivision together with their neighborhood instead of splitting them in the middle of their residential community as Option B proposes (violating Redistricting Guideline #2 above). Since Springfield Park ES is where these students currently attend, no students would be impacted as a result of this change either.
- Move Census Tracts 10314 (7) and 16309 (53) to Echo Lake ES. This keeps Staples Mill & Hungary Roads, both major roadways, as the boundary line for Echo Lake ES (supporting all of the Redistricting Guidelines).
- Move Census Tracts 10314 (5) and 16309 (37) back to Glen Allen HS where they are currently zoned. This keeps Staples Mill & Hungary Roads (both major roadways) as the boundary line for Glen Allen HS, ensuring consistency with Echo Lake ES and Hungary Creek MS boundaries (supporting all of the Redistricting Guidelines). Since Glen Allen HS utilization is 83% in Option B and 90% in Option D, they can handle this extremely small group of students without negative impact.

Our Option 1 Proposal is a happy medium combining the Pros of Options A, B & C. The ONLY students impacted by this change are the ones in Census Tract 40602 (all 3 options already move these students from Rivers Edge ES to Springfield Park ES so they are likely impacted regardless of which option is chosen) and the students in Census Tracts 10314 & 16309 (who are also slated to be moved from Longan ES in all 3 options, are happy to be zoned to Echo Lake ES, and want to remain at Glen Allen HS).

The two key differences between Options B & D and our Option 1 Proposal is this proposal allows our students to be placed in Echo Lake ES while allowing Lindsey Lakes and a few other neighboring communities to remain at Springfield Park ES with the rest of their neighborhood, and it also allows our students to remain at Glen Allen HS. These changes follow and meet ALL the Redistricting Guidelines (using major roadways as boundaries, keeping contiguous geographic zones together, ensuring safe and efficient use of school bus transportation, maintaining continuous K-12 progress, etc.), without impacting any students other than our own.

Our Option 2 Proposal is to SLIGHTLY modify Options B & D as follows:

- Move Census Tracts 16335 (32) back to Springfield Park ES as they are currently zoned. This keeps the Lindsey Lakes subdivision together with their neighborhood instead of splitting them in the middle of their residential community as Option B proposes (violating Redistricting Guideline #2 above). Since Springfield Park ES is where these students currently attend, no students would be impacted as a result of this change.
- Move Census Tracts 10314 (7) and 16309 (53) to Echo Lake ES. This makes Staples Mill & Hungary Roads (both major roadways) the boundary line for Echo Lake ES (supporting all of the Redistricting Guidelines).
- Move Census Tracts 10314 (5) and 16309 (37) back to Glen Allen HS where they are currently zoned. This keeps Staples Mill & Hungary Roads (both major roadways) as the boundary line for Glen Allen HS, ensuring consistency with Echo Lake ES and Hungary Creek MS boundaries (supporting all of the Redistricting Guidelines). Since Glen Allen HS utilization is 83% in Option B and 90% in Option D, they can handle this extremely small group of students without negative impact.

Our Option 2 Proposal is a reduced version of Our Option 1 Proposal and is still a happy medium combining the Pros of Options A, B, & C. The ONLY students impacted by this change are the students in Census Tracts 10314 & 16309 (who are slated to be moved from Longan ES in all 3 options, are happy to be zoned to Echo Lake ES, and want to remain at Glen Allen HS).

The two key differences between Options B & D and our Option 2 Proposal is this proposal allows our students to be placed in Echo Lake ES while allowing Lindsey Lakes to remain at Springfield Park ES with the rest of their neighborhood, and it also allows our students to remain at Glen Allen HS. These changes follow and meet ALL the Redistricting Guidelines (using major roadways as boundaries, keeping contiguous geographic zones together, ensuring safe and efficient use of school bus transportation, maintaining continuous K-12 progress, etc.), without impacting any students other than our own.

Our Option 3 Proposal is to SLIGHTLY modify Options B & D as follows:

- Use the Elementary School Boundary Option 6 map as the Option B map since it was selected by the elementary committee in November as one of their top two options. Elementary School Option 6, which placed Census Tracts 10314 (7) and 16309 (53) at Echo Lake ES, was supposed to be combined with Secondary Option 3 to formulate Option B, but modifications were made to the elementary map which moved these Census Tracts from Echo Lake ES to Dumbarton ES in the newly formed Option B.
- Move Census Tracts 10314 (5) and 16309 (37) back to Glen Allen HS where they are currently zoned. This keeps Staples Mill & Hungary Roads (both major roadways) as the boundary line for Glen Allen HS, ensuring consistency with Echo Lake ES and Hungary Creek MS boundaries (supporting all of the Redistricting Guidelines). Since Glen Allen HS utilization is 83% in Option B and 90% in Option D, they can handle this extremely small group of students without negative impact.

The only differences between Options B & D and our Option 3 Proposal is this proposal allows our students to be placed in Echo Lake ES and allows our students to remain at Glen Allen HS. These changes follow and meet ALL the Redistricting Guidelines (using major roadways as boundaries, keeping contiguous geographic zones together, ensuring safe and efficient use of school bus transportation, maintaining continuous K-12 progress, etc.), without impacting any students other than our own.

All 3 of our proposals would address our neighborhood's concerns, accomplish the redistricting objectives, AND meet the Redistricting Guidelines in the following ways:

- Using major roadways as boundaries (Staples Mill & Hungary Roads)
- Supporting safe, efficient transportation (avoiding dangerous intersections, unassisted left-hand turns out of our subdivisions onto Hungary Road, U-turns, and long commutes past other schools to work around medians)
- Keeping our subdivisions with the rest of the Crossridge community (balancing a neighborhood school concept)
- Keeping our children's K-12 progress intact as it is today and consistent with the feeder patterns of our surrounding communities (Echo Lake ES to Hungary Creek MS to Glen Allen HS)

In Summary....

We are in full support of Options A & C as they relate to our neighborhood. From our perspective, they meet ALL the Redistricting Guidelines as described above and have the least overall impact to students.

We would be in full support of Options B & D and any future options IF slight modifications were made to the Option B Elementary school map (moving us from Dumbarton ES to Echo Lake ES) and the Options B & D High school maps (moving us from Hermitage HS to Glen Allen HS where we are currently zoned).

We're asking the redistricting committees to consider SLIGHTLY revising Options B & D based on the rationale and proposals detailed above. By making the major roadways of Staples Mill & Hungary Roads the boundary line at all 3 school levels, ALL redistricting objectives and guidelines given by the school board would be met for this area of the county.

Thank you again for your time and consideration in this matter.

-Keith Lippa

This communication is for use by the intended recipient and contains information that may be Privileged, confidential or copyrighted under applicable law. If you are not the intended recipient, you are hereby formally notified that any use, copying or distribution of this e-mail, in whole or in part, is strictly prohibited. Please notify the sender by return e-mail and delete this e-mail from your system. Unless explicitly and conspicuously designated as "E-Contract Intended", this e-mail does not constitute a contract offer, a contract amendment, or an acceptance of a contract offer. This e-mail does not constitute a consent to the use of sender's contact information for direct marketing purposes or for transfers of data to third parties.

Francais Deutsch Italiano Espanol Portugues Japanese Chinese Korean

<https://www.dupont.com/email-disclaimer.html>

Fairfield District Comments

Justin M. Briggs (jmbriggs)

From: Christopher A. Sorensen (casorensen)
Sent: Thursday, January 16, 2020 12:20 PM
To: Justin M. Briggs (jmbriggs)
Subject: FW: Win-win for school redistricting
Attachments: MS HS January 2020_02.pptx

From: Roscoe D. Cooper, III (rdcooper) <rdcooper@henrico.k12.va.us>
Sent: Wednesday, January 15, 2020 10:43 AM
To: Amy E. Cashwell (aecashwell) <aecashwell@henrico.k12.va.us>; Christopher A. Sorensen (casorensen) <casorensen@henrico.k12.va.us>; schoolboard <schoolboard@henrico.k12.va.us>
Subject: Fwd: Win-win for school redistricting

All-

I received this from a constituent and wanted to share with everyone.

Thank you for all you do...

Roscoe D. Cooper, III
Henrico County School Board
Fairfield District

From: Ashley Lewis <lewisashley1212@gmail.com>
Sent: Friday, January 10, 2020 7:29 AM
To: Roscoe D. Cooper, III (rdcooper)
Cc: yaelandscott@gmail.com
Subject: Win-win for school redistricting

Use Caution: This message originated outside of Henrico County Public Schools. Use caution when opening attachments, clicking links or responding to requests for information.

Dear Reverend Cooper,

My name is Ashley L. Lewis and I am a River Mill Resident. My stepdaughter attended Brookland MS and now attends Hungary Creek MS and my youngest is still a toddler. You may remember me from the multiple times I have spoken in front of the school board regarding the redistricting. We are excited and motivated by a possible solution for the redistricting. What would you think if I told you that the capacity issues in all of the middle schools and high schools could be addressed with only 471 students impacted on the middle school level vs the 1,264 impacted in Option A, the 923 impacted in Option B, or the 1,502 impacted in Option C, and only 530 students impacted on

the high school level vs the 1,323 impacted in Option A, the 1,821 students impacted in Option B, the 1,005 impacted in Option C, and the 784 impacted in Option D? Improved capacity numbers with minimal homes impacted would seem to be a “win-win”. I’m writing to share how that can be achieved with what we are calling **Option Z**.

Some friends connected us with a consultant up in NoVA that does the same kind of work as CropperGIS. This is a company that consults regularly on school redistricting in that area. This consultant was kind enough to draw up maps for us pro-bono to help us out. The maps they came up with impact significantly fewer students and adhere to the redistricting guidelines much more so than the map options presented by CropperGIS. My guess is they are less politically motivated as well. (And, you will note, they found a few capacity calculation errors in the data presented by CropperGIS).

I implore you to please review these maps and to guide the school board to consider this alternative over the options presented by CropperGIS as this **Option**

Z is better Countywide. Again, this plan impacts fewer students and better adheres to the redistricting guidelines. These maps help our Fairfield district whereas the maps presented by CropperGIS make the Fairfield district schools more economically disadvantaged.

We have submitted our feedback over and over again, asking to keep our neighborhoods (River Mill, Greenwood Glen, and Magnolia Ridge) at our currently zoned schools – Hungary Creek MS and Glen Allen HS. All current map options send us to Brookland MS and Hermitage HS, and NONE of those options adhere to the redistricting guidelines. Moreover, not only do these options fail to meet the redistricting goals, they make Hungary Creek MS and Glen Allen HS more “white” and more affluent, while making Brookland MS and Hermitage HS more economically disadvantaged.

We have observed committee meeting after committee meeting where River Mill is spoken of negatively, with disdain and often with references to “those people”. We even had to report a Secondary Committee member for bias and slander against us on Facebook, for which we provided screenshots. We feel that we have not been heard and that we had no other recourse than to find the better solution and then approach the school board in hopes that you and your colleagues will embrace this “win-win”.

It is our sincere hope that you, as our school board representative, will give careful consideration to the information provided and will offer your leadership in guiding the County to the more equitable redistricting modeled in **Option Z**.

Thank you for reviewing the **Option Z** information and maps and for your thoughtful consideration of how this option would benefit our Fairfield District and the County at large.

Thank you in advance,

Ashley L. Lewis

Ashley Lewis BSN, RN
REALTOR® | United Real Estate Richmond
804-518-8218 (Cell)
Licensed in the Commonwealth of Virginia

Sent from my iPhone

Analysis of HCPS Redistricting 2021 Options for MS & HS January 2020

Presenting Option Z

Option Z (MS & HS) Compared to Current Options by CropperGIS:

- Option Z affects fewer MS & HS Students
- Option Z reassigns tracts based on natural boundaries and proximity to the schools
- Option Z balances capacity utilization in schools without unnecessary reassignment of areas

MS Options Analysis

- CropperGIS produced MS Options A, B, & C.
- Option A reassigns 90 tracts and affects 1,264 students;
In Option A, Pocahontas MS is at 98%
- Option B reassigns 69 tracts and affects 923 students;
In Option B, Wilder MS is at 100% (not even accounting for out of zone students for the Gifted program)
- Option C reassigns 88 tracts and affects 1,502 students;
In Option C, Tuckahoe MS is at 100%
- Option Z reassigns **only 23 tracts** and affects **only 471 students**; In Option Z, ***no school is over 93% capacity***

MS Options Comparison

Middle Schools	capacity	Current Enrollment	Enrolled Utilization	Option A	% Utilization	Option B	% Utilization	Option C	% Utilization	Option Z	% Utilization
BROOKLAND	1354	1214	90%	1147	85%	1220	90%	1137	84%	1222	90%
ELKO	1058	762	72%	720	68%	720	68%	729	69%	762	72%
FAIRFIELD	1348	1092	81%	1205	89%	1037	77%	1205	89%	1238	92%
HOLMAN	1058	937	89%	808	76%	792	75%	819	77%	937	89%
HUNGARY CREEK	986	989	100%	826	84%	826	84%	830	84%	850	86%
L. DOUGLAS WILDER	982	832	85%	891	91%	986	100%	873	89%	872	89%
MOODY	1206	1129	94%	1090	90%	1090	90%	1090	90%	1074	89%
POCAHONTAS	982	911	93%	967	98%	892	91%	771	79%	911	93%
QUIOCCASIN	1356	1113	82%	1269	94%	1223	90%	1268	94%	1113	82%
ROLFE	1358	851	63%	926	68%	926	68%	917	68%	851	63%
SHORT PUMP M.	1238	1070	86%	1025	83%	1163	94%	1014	82%	1070	86%
TUCKAHOE M.	1348	1103	82%	1129	84%	1128	84%	1350	100%	1103	82%
	14274	12003	84%	12003	84%	12003	84%	12003	84%	12003	84%

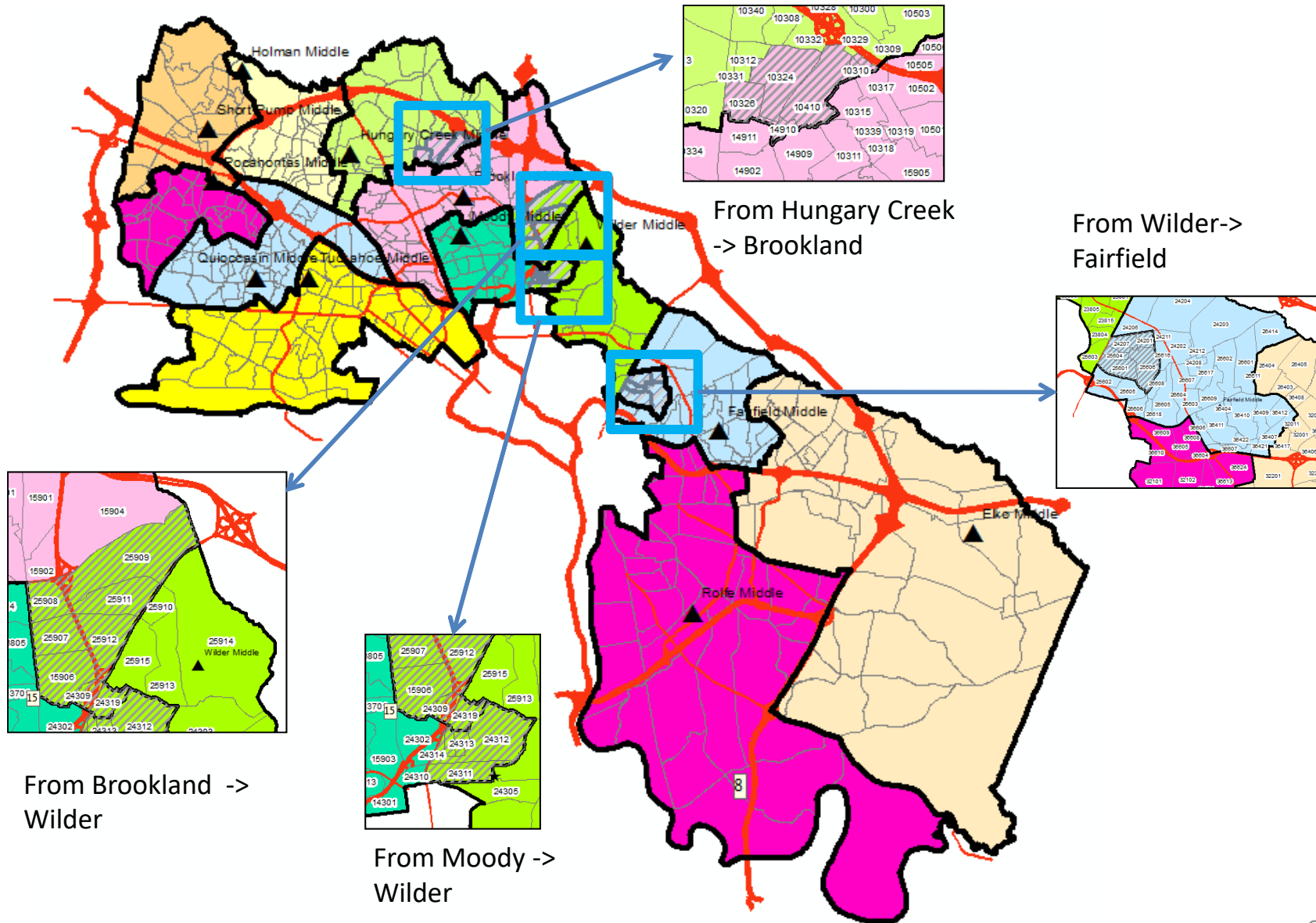
Capacity issues in Options A, B and C.

No Capacity issues in Option Z

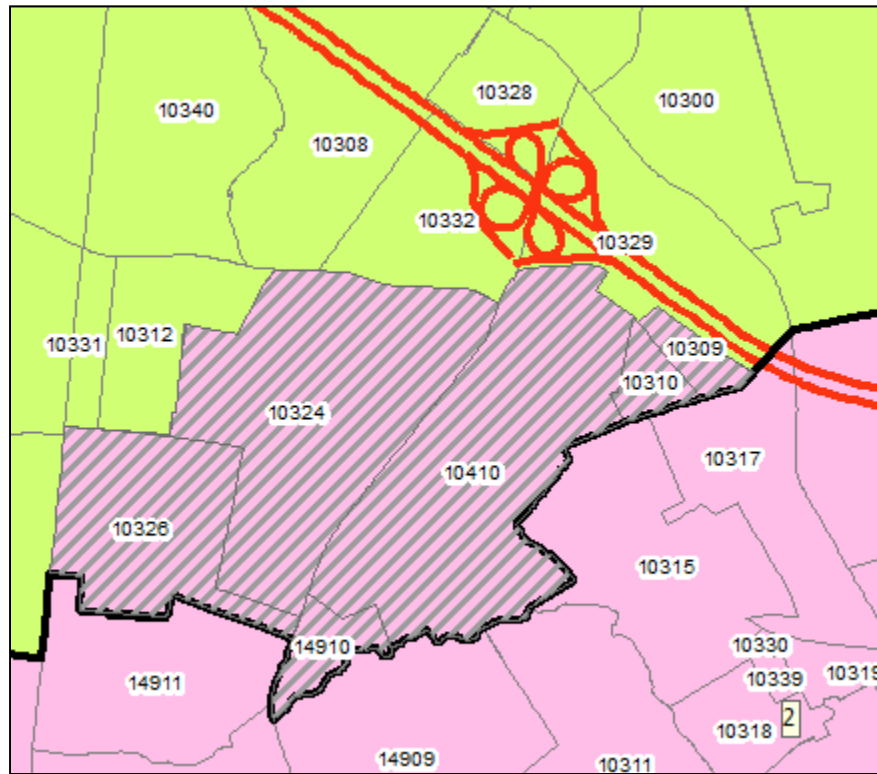
Observations:

- In Option C, ***Hungary Creek MS*** has 830 Students enrolled with capacity of 986.
- ***The tables on the redistricting website show a percentage of 72%. It should be $830/986 = 84\%$.***

Our Suggestion - MS Option Z



Option Z: From Hungary Creek to Brookland



- **Reasons for Change -**
- Hungary Creek MS is at 100% utilization and needs relief
- The suggested tracts are **South** of I-295 and are **closer** to Brookland MS
- Some tracts match those recommended in CropperGIS's Options A, B, and C

Option Z: From Hungary Creek to Brookland

Tracts Affected

CENSUS TRACT	MS Count	HS Count
10309	0	0
10310	0	0
10324	63	51
10326	15	32
10410	13	22
14910	48	34

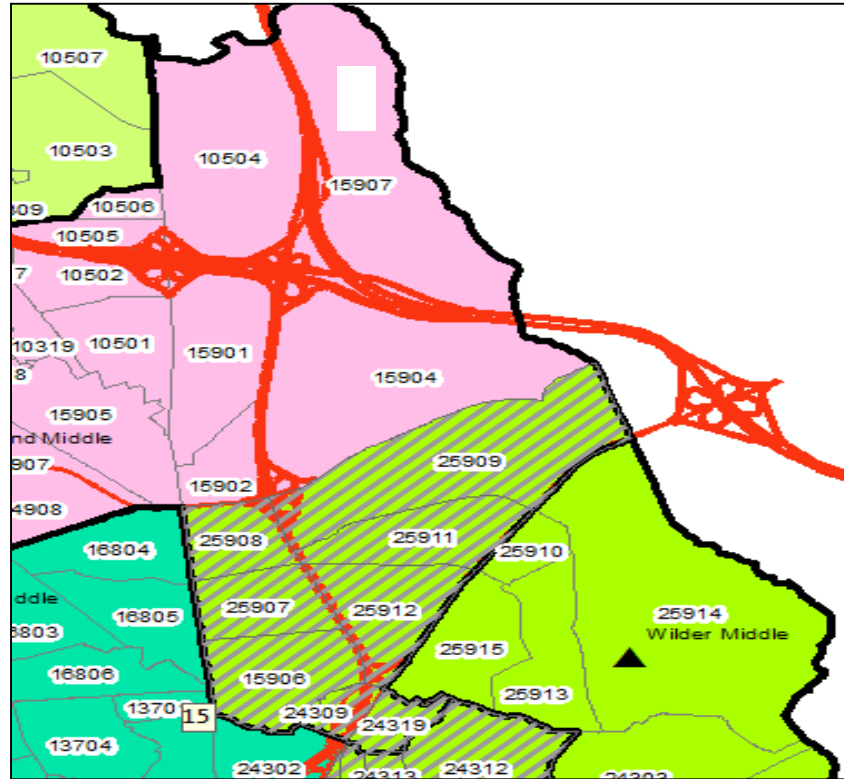
Neighborhoods Affected:

Glen Allen Heights
Glen Allen Park
Glen Hollow
Maurice Walk
Mountain Glen
Mountain Laurel Townhouses
Mountain Road Townes
Shepherd's Run
Townes At Woodman
Windsor Woods
Woodman Glen
Woodman Hills

Please note:

- ***Tracts 10309, 10310, 10410, 14910 match CropperGIS's Options A, B, and C.***
- ***Affects 6 tracts; 139 MS Students***

Option Z: From Brookland to Wilder



Reason for Change –

- The selected tracts are **closer** to Wilder MS
- Some tracts are the same as recommended in Cropper's Options A, B, and C

Option Z: From Brookland to Wilder

Neighborhoods Affected

Ashbury at Stoneleigh
Braxton at Stoneleigh
Brookside Gardens
Carlton at Stoneleigh
Chamberlayne Farms
Chipplegate
Club Court
Danwood at Stoneleigh
Lake Ridge
Lakeside Terrace
Northfield
Stuart Ridge Addition
Vaughan Heights
Wildwood

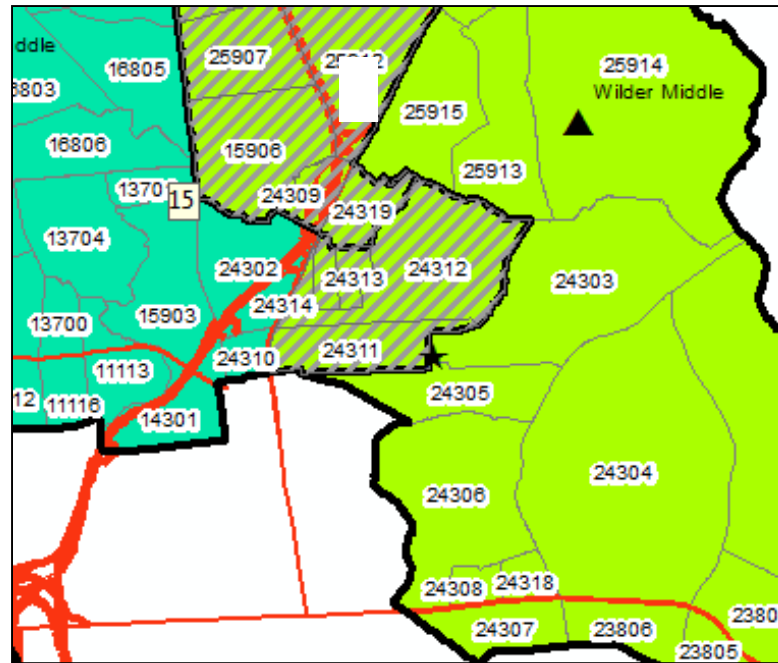
Tracts Affected

CENSUS TRACT	MS Count	HS Count
15906	15	19
24309	0	0
24319	25	37
25907	17	29
25908	7	3
25909	47	58
25911	15	14
25912	5	11

Please note:

- ***These tracts match CropperGIS's Options A, B, and C***
- ***Affects 8 tracts; 131 MS Students***

Option Z: From Moody to Wilder



Reasons for Change –

- The selected tracts are **closer** to Wilder MS
- Moody is at 94% and needs relief and Wilder is only at 85%
- Some of these tracts match CropperGIS's Options A, B, and C

Option Z: From Moody to Wilder

Neighborhoods Affected

Afton
Azalea Court
Brook Hill Heights
Chamberlayne Estates
Cherokee Place
Huntington Place
McCowin Estates
The Oaks
Village of Azalea

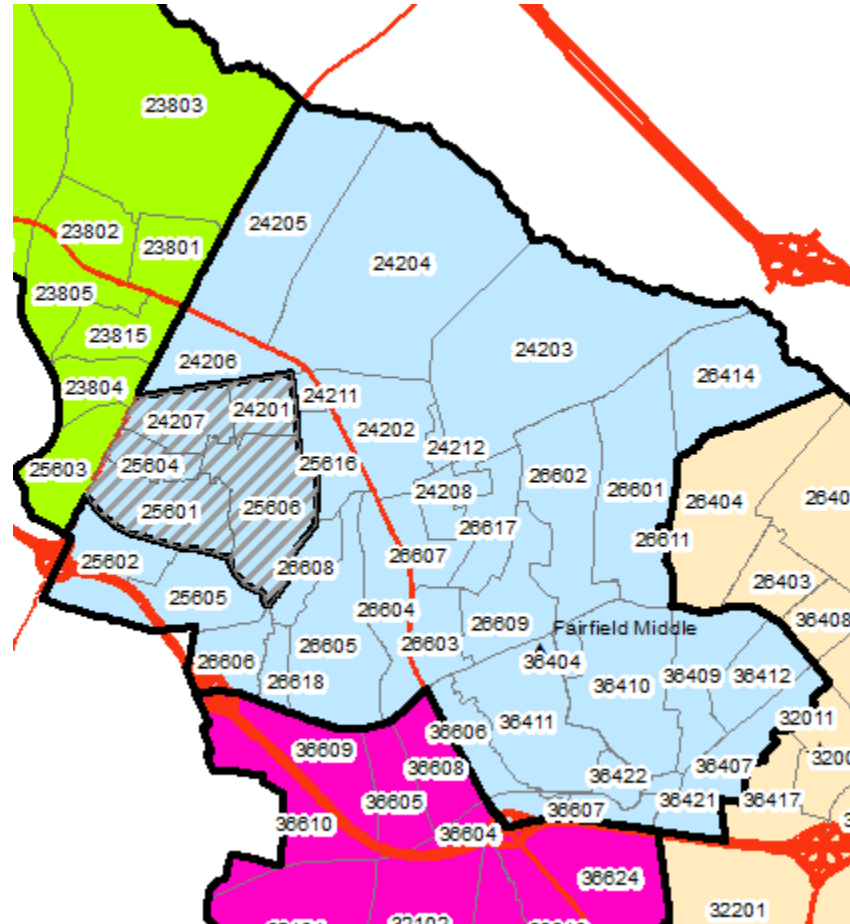
Tracts Affected

CENSUS TRACT	MS Count	HS Count
24311	28	60
24312	11	42
24313	11	40
24314	5	7

Please note:

- ***These tracts are also reassigned by CropperGIS's Options A, B, and C***
- ***Affects 4 tracts; 55 MS Students***

Option Z: From Wilder to Fairfield



Reason for Changes

- The selected tracts are **East** of Route 360 **closer** to Fairfield MS
- Same tracts are reassigned in CropperGIS's Options A, B, and C

Option Z: From Wilder to Fairfield

Tracts Affected

CENSUS TRACT	MS Count	HS Count
24201	25	49
24207	19	22
25601	36	51
25604	16	14
25606	50	80

Neighborhoods Affected

Evan's Place
Fordham Village
Glenwood Farms
Glenwood Lakes
Harvie Court
Hollybrook Townhouses
Mayfair Place
Montezuma Circle
Montezuma Farms
Montezuma Gardens
Montezuma Village
Oak Hill
Oak Hill Manor
Oxford Court
Premiere Row
Saint Claire Ridge
Sandy Grove
Wilton Place

Please note:

- ***These tracts are also reassigned in CropperGIS's Options A, B, and C***
- ***Affects 5 tracts; 146 MS Students***

HS Options Analysis

- CropperGIS produced Options A, B, C, and D
- Current capacity issues at Freeman (104%), Glen Allen (103%) and Highland Springs (102%)
- Option A reassigns 61 tracts and affects 1,323 HS Students; ***Option A has capacity issues at Freeman (98%) and Highland Springs (99%)***
- Option B reassigns 87 tracts and affects 1,821 HS students; ***Option B has capacity issues at Deep Run (98%) and Highland Springs (99%)***
- Option C reassigns 55 tracts and affects 1,005 HS Students; ***Option C has Capacity issues at Henrico (96%) and Highland Springs (99%)***
- Option D reassigns 42 tracts and affects 784 HS Students; ***Option D capacity issues at Godwin (96%) and Highland Springs (99%)***
- **Option Z** reassigns **only 25 tracts** and affects **only 530 HS Students** (under 4%); ***Option Z has no capacity issues; No School is over 95% or under 80% capacity utilization.***

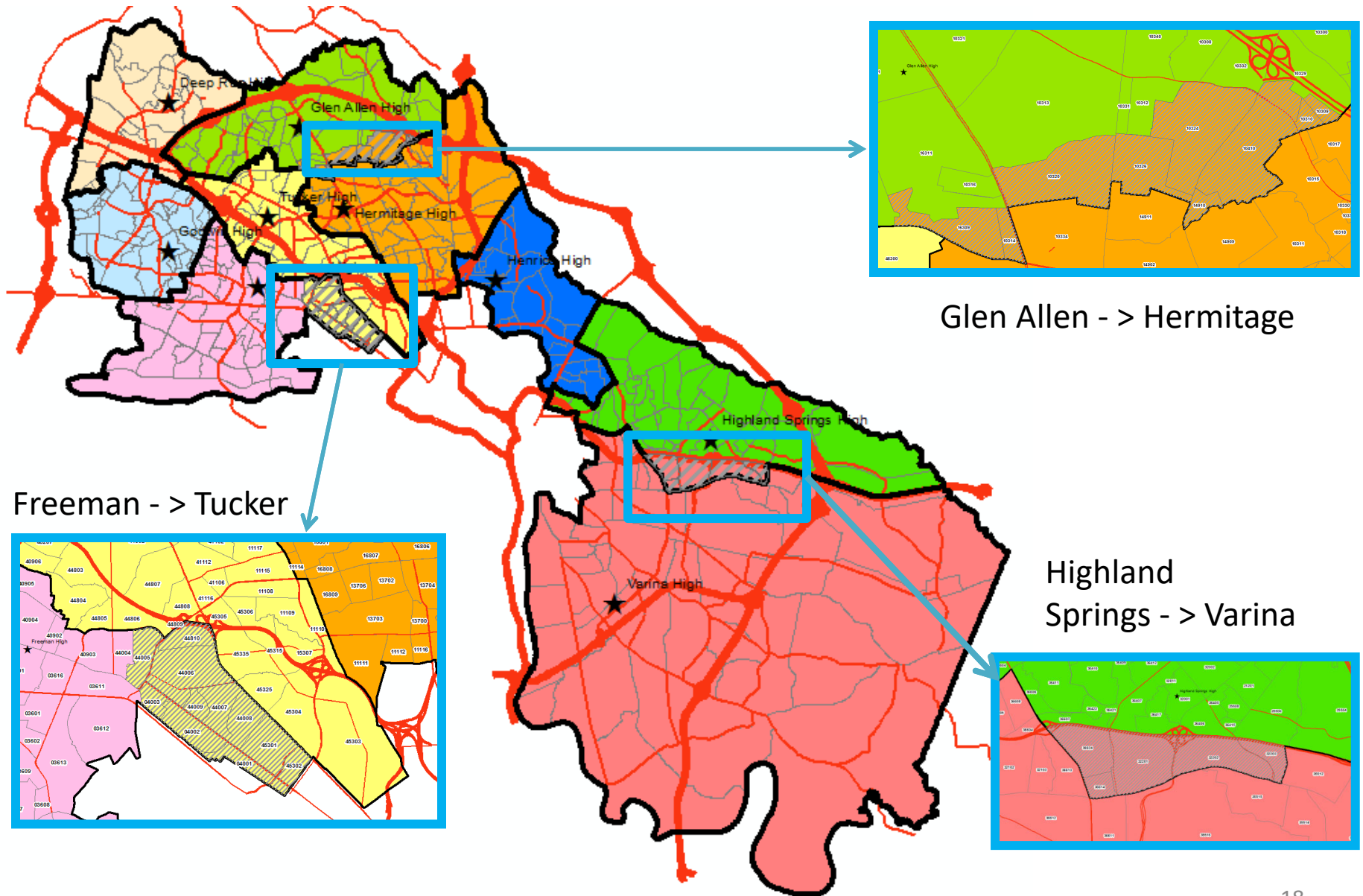
HS Options Analysis

High Schools	Capacity	Current	% Utilization	Option A	% Utilization	Option B	% Utilization	Option C	% Utilization	Option D	% Utilization	Option Z	% Utilization
Deep Run	1850	1765	95%	1763	95%	1818	98%	1765	95%	1765	95%	1765	95%
Freeman	1760	1823	104%	1728	98%	1613	92%	1665	95%	1648	94%	1648	94%
Glen Allen	1850	1904	103%	1662	90%	1538	83%	1593	86%	1661	90%	1694	92%
Godwin	1904	1807	95%	1785	94%	1767	93%	1817	95%	1825	96%	1807	95%
Henrico	1884	1511	80%	1668	89%	1714	91%	1806	96%	1714	91%	1511	80%
Hermitage	1976	1594	81%	1656	84%	1737	88%	1714	87%	1652	84%	1804	91%
Highland Springs	1788	1826	102%	1779	99%	1779	99%	1779	99%	1779	99%	1681	94%
Tucker	1958	1672	85%	1794	92%	1869	95%	1696	87%	1791	91%	1847	94%
Varina	1980	1453	73%	1520	77%	1520	77%	1520	77%	1520	77%	1598	81%
Grand Total	16950	15355	91%	15355	91%	15355	91%	15355	91%	15355	91%	15355	91%

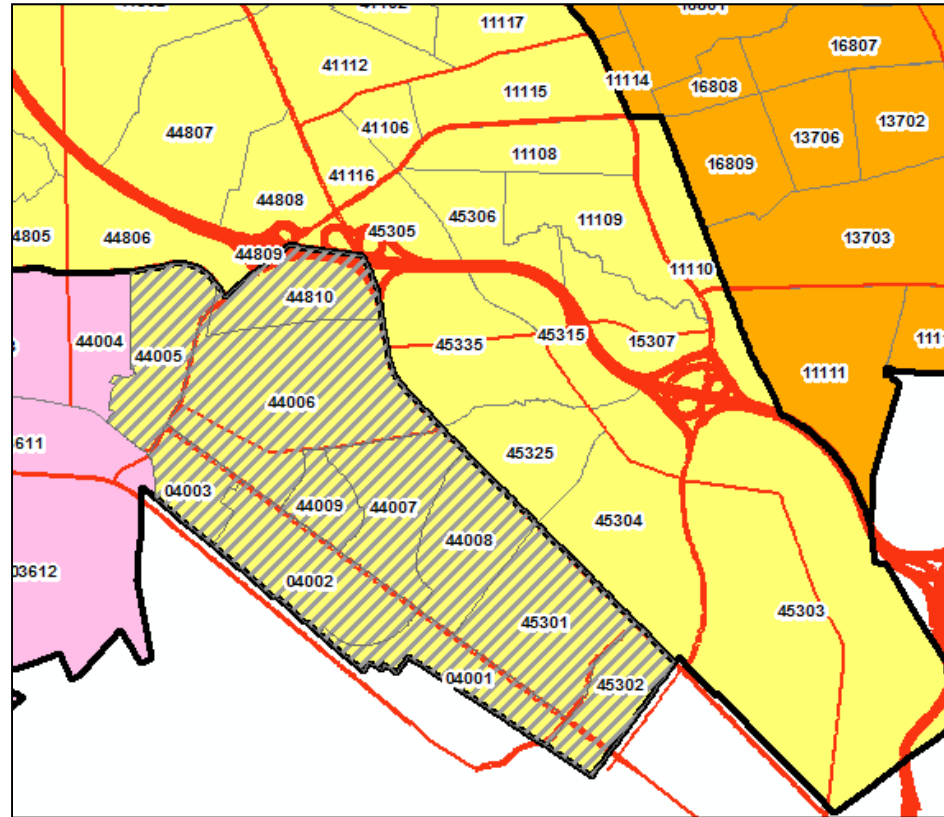
Observations:

- In Option A, B, C and D, ***Highland Springs HS*** has 1,779 Students enrolled with capacity of 1,788.
- ***The tables on the redistricting website show a percentage of 89%. It should be $1779/1788 = 99\%$***

Our Suggestion - HS Option Z



HS Option Z: Freeman to Tucker



Reasons for Change

- Freeman HS needs relief
- The neighboring tracts are already in Tucker
- These tracts have also been reassigned in CropperGIS's Option B & D

HS Option Z: Freeman to Tucker

Neighborhoods Affected

Belle Air
Crestview
Duntreath
Fort Hill
Keswick Gardens
Monument Avenue Crest
Monument Avenue Terrace
Monument Crest Annex
Monument Heights
Monument Hills
Monument Hills Annex
Monument Place
Monumental Floral Gardens
North Willow Lawn
Patterson Office Village
Patterson Place
Pine Acres
Pine Ridge Subdivision
Shenandoah Place
Southern Plaza
Sunset Hills Addition
Treboy Avenue
Westhaven
Westlyn Court
Westview
Westview Manor
Westwood
Westwood Home Sites
Westwood Manor
Westwood Proper
Westwood Terrace

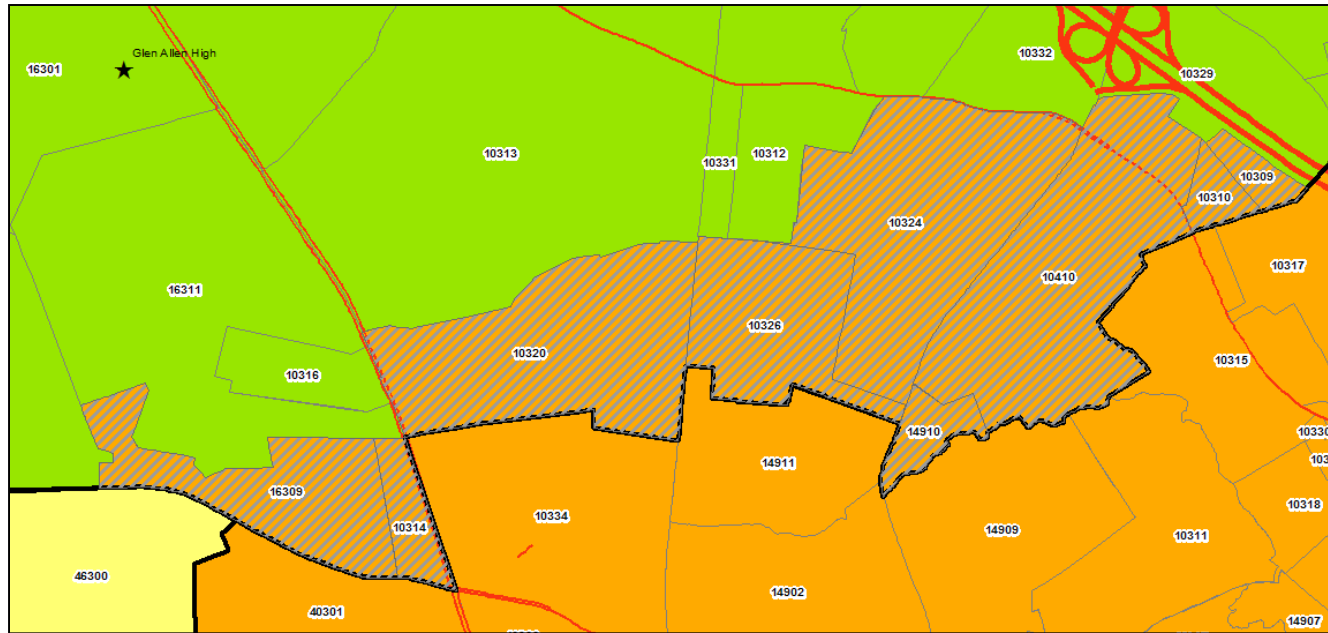
Tracts Affected

CENSUS TRACT	MS Count	HS Count
04001	5	2
04002	12	14
04003	9	11
44005	17	22
44006	67	71
44007	18	25
44008	13	11
44009	4	4
44810	0	0
45301	9	12
45302	1	3

Please note:

- ***These tracts have also been reassigned in CropperGIS's Options B & D***
- ***Affects 11 tracts; 175 HS students***

HS Option Z: Glen Allen to Hermitage



Reason for Change

- Glen Allen HS needs relief
- The suggested tracts are **South** of I-295
- The suggested tracts are **closer** to Hermitage HS
- Some tracts have also been reassigned in CropperGIS's Options A, B, C & D

HS Option Z: Glen Allen to Hermitage

Tracts Affected

CENSUS TRACT	MS Count	HS Count
10309	0	0
10310	0	0
10314	4	5
10320	28	29
10324	63	51
10326	15	32
10410	13	22
14910	48	34
16309	27	37

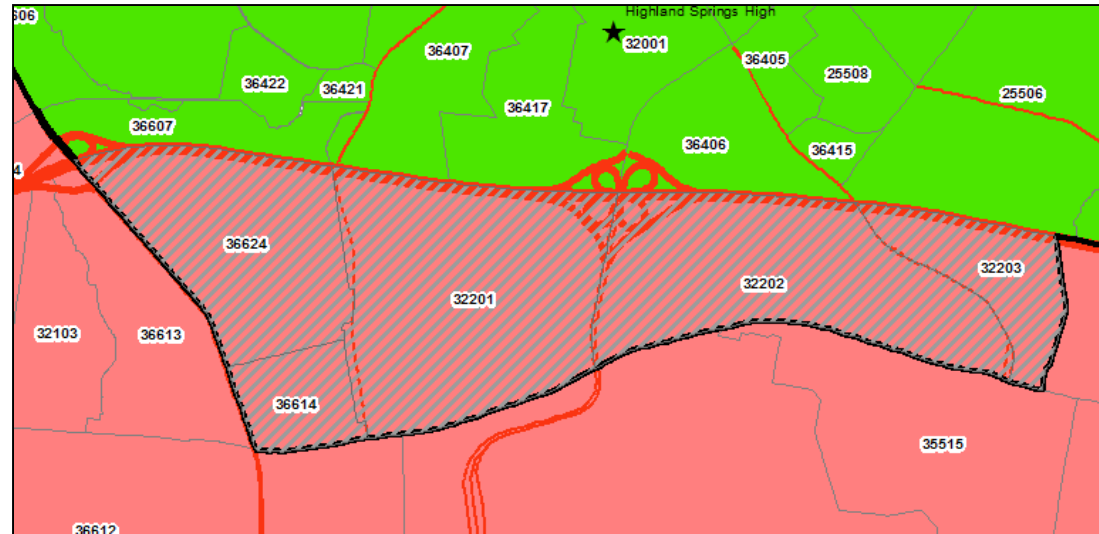
Neighborhoods Affected

Brittany
Dove Hollow
Elk Ridge
Glen Allen Heights
Glen Allen Park
Hill Trace
Ironwood at Crossridge
Maurice Walk
Mountain Cove
Mountain Glen
Mountain Laurel Townhouses
Mountain Road Townes
Staples Mill Trace
Tall Oaks
Tall Timbers
Townes At Woodman
Twin Oaks
Windsor Woods
Winston Court
Winston Trace
Woodman Glen
Woodman Hills
Woodman Trace

Please note:

- ***Tracts 10314 and 16309 have also been reassigned in CropperGIS's Options B & D***
- ***Tracts 10309, 10310, 10410, and 14910 have also been reassigned in CropperGIS's Options A, B, C, and D***
- ***Affects 9 tracts; 210 HS Students***

HS Option Z: Highland Springs to Varina



Reasons for change -

- Highland Springs HS needs relief
- The suggested tracts are **South** of I-64
- Some tracts have also been reassigned in CropperGIS's Options A, B, C, and D

HS Option Z: Highland Springs to Varina

Neighborhoods Affected

Airport Square
Battle Park
Gilmour Place
International Airport Centre
International Business Park
Sanburne Park
Sandston
Sandston Highland
Seven Pines Villa
Seven Pines Villa Sites
Soukup A Estate
Virginia Heights
Wedgewood Manor
West Sandston
Wingwood Park
Woodlawn Terrace

Tracts Affected

CENSUS TRACT	MS Count	HS Count
32201	15	24
32202	32	27
32203	21	19
36614	10	8
36624	48	67

Please note:

- *Tract 36624 is also reassigned in CropperGIS's Options A, B, C, and D*
- *Affects 5 tracts; 145 HS Students*

“Win-Win” Option Z

- Impacts Fewer Students - only 471 for MS and 530 for HS
- Addresses capacity concerns for MS across the board with none over 93%
- Addresses capacity concerns for HS across the board with none over 95%
- Provides needed capacity relief for Hungary Creek MS at 86%
- Provides needed capacity relief for Hermitage HS at 91%, Freeman HS at 94% and Glen Allen HS at 92%
- Addresses all capacity issues across the board in a more uniform and balanced way without unnecessary reassignment of census tracts
- Provides for new census tracts and future development capacity wise
- Reassigns tracts utilizing major road and natural boundaries
- Recognizes contiguous geographic zones
- Ensures an efficient system of school bus transportation

Three Chopt District Comments

Justin M. Briggs (jmbriggs)

From: Patricia A. Anderson (paanders)
Sent: Tuesday, January 14, 2020 1:11 PM
To: Kristi B. Kinsella (kbkinsella); Roscoe D. Cooper, III (rdcooper); Marcie F. Shea (mfshea); Alicia S. Atkins (asatkins); Michelle F. Ogburn (mfogburn1); Superintendent; Christopher A. Sorensen (casorensen); Justin M. Briggs (jmbriggs)
Subject: Redistricting - Middle School

Please also forward to the Citizen Redistricting Committee.

Neighborhood: Cross Keys

We are rejecting Options A, B, C, D as all options have Cross Keys going to Quioccasin Middle School. We are requesting new options be made available to have our children attend Pocahontas MS.

The Church Rd community is a natural contiguous series of subdivisions along Church Rd and Cross Keys is included in this series. Our families and children swim together each summer on the community swim team, we gather for meetings and recreational activities at the close by Pocahontas MS, our children go from subdivision to subdivision on their bikes and walk to each other's homes. Many children participate together in Spring and Fall ball at Tuckahoe Little League and other sports teams. This is our community!

In addition, Henrico County Department of Public Works is building sidewalks along Church Rd. to connect with the sidewalks to be completed during the "Three Chopt Road Improvements Project". This will provide continuous sidewalks from Cross Keys neighborhood to Pocahontas MS. which will make this a safe walk to Pocahontas MS. Quioccasin MS is 3.5 miles away and buses would be crossing many busy intersections such as Gaskins and Three Chopt, Gaskins and Ridgfield Pkwy, and Gaskins and Quioccasin.

Thank you for your consideration.

Jamie and Patty Anderson

Justin M. Briggs (jmbriggs)

From: Christopher A. Sorensen (casorensen)
Sent: Monday, January 13, 2020 10:27 PM
To: Justin M. Briggs (jmbriggs)
Subject: FW: Article in Sunday's paper
Attachments: Page A2 _ Richmond Times-Dispatch _ richmond.com.pdf

From: Michelle F. Ogburn (mfogburn1) <mfogburn1@henrico.k12.va.us>
Sent: Monday, January 13, 2020 3:59 PM
To: Christopher A. Sorensen (casorensen) <casorensen@henrico.k12.va.us>; Matthew Cropper <mcropper@croppergis.com>
Cc: Amy E. Cashwell (aecashwell) <aecashwell@henrico.k12.va.us>
Subject: Fw: Article in Sunday's paper

I got this email from a constituent in regards to the newspaper article on Sunday.

Micky

Mrs. Micky Ogburn
Henrico County School Board
Three Chopt District

EMAIL: mfogburn1@henrico.k12.va.us
CELL PHONE: 804-385-9819
School Board Clerk:
Ms. Debbie Ward- (804)652-3808, FAX-(804) 652-3856

From: Micky Ogburn <mickyogburn1@gmail.com>
Sent: Monday, January 13, 2020 3:53 PM
To: Michelle F. Ogburn (mfogburn1) <mfogburn1@henrico.k12.va.us>
Subject: Fwd: Article in Sunday's paper

Use Caution: This message originated outside of Henrico County Public Schools. Use caution when opening attachments, clicking links or responding to requests for information.

----- Forwarded message -----
From: Bill Auchmoody <billauchmoody@gmail.com>
Date: Mon, Jan 13, 2020 at 10:16 AM
Subject: Article in Sunday's paper
To: Micky Ogburn <MickyOgburn1@gmail.com>

Hi Micky

I am not sure if you saw the RTD article yesterday. I thought it was interesting but could have offered a wider perspective.

After I shared the article with some of my neighbors I was told that Brandi Marano, a member of the committee working on elementary school boundaries (as noted in the article), does not have children in HCPS. That by itself is not troubling...what is troubling is she has stated openly during committee meetings she would never send her kids to HCPS. That's a lot of bias.

I think people who do not have children in HCPS now or in the past certainly have a place in this process...even serving on the committee makes sense. Diverse perspectives are healthy in any setting. But we should be very careful about people with extreme bias.

There may be some negative feedback now that her comments have been published in the RTD and her publicly saying ***"community members appear prejudiced against schools with relatively large populations of students from low-income or non-English speaking families."***

Thanks,

Bill Auchmoody
804-908-4771

Tuckahoe District Comments

Justin M. Briggs (jmbriggs)

From: Christopher A. Sorensen (casorensen)
Sent: Monday, January 20, 2020 6:16 PM
To: melinsean@verizon.net; Justin M. Briggs (jmbriggs); Matthew Cropper; Superintendent; schoolboard
Subject: RE: Concerns over biased committee members

Ms. Winterhalter,

Sorry my first email did not address your questions.

Each meeting does have opportunities for the members to discuss options. However, when time for discussion may be limited there are other processes in place to remove as much personal bias/opinion/perspectives as possible. Those processes include: 1) review the redistricting goals and criteria at each meeting; 2) data and metrics to evaluate the maps; 3) transparency to the public; 4) provide the committee with public feedback; and 5) discuss implicit bias with the committee.

The staff and Cropper are not able to police comments and activities of all committee members at all times. Each committee has a chair that does work with members at their discretion to ensure the process is as objective as possible. These are large committees and therefore it is difficult for any one person to have undue influence on the process. Because the committees are large, there will be different views and perspectives, but in the end, committee members are effectively working on a solution for the benefit of all students. Also, the final recommendations to the School Board will come from the entire committee and not from individual members.

Regarding your question about the committee's guidelines, the following was included in the orientation at the first meeting. This guideline has also been repeated at other meetings.

The School Board approved a grass-roots, community-based committee lead this redistricting study. Total committee membership numbers 66 volunteers. Citizens from throughout Henrico County will sit on the committee.

The committee members have been chosen based on where they live, as well as based on the quality of their application. Although committee members live in various areas of the county, they will be instructed not to only focus on the area in which they live. Members will be oriented to focus on developing options that best meet the needs of ALL students in Henrico County.

I hope this helps.

Chris

From: Melinda Winterhalter <melinsean@verizon.net>
Sent: Wednesday, January 15, 2020 8:27 AM
To: Christopher A. Sorensen (casorensen) <casorensen@henrico.k12.va.us>; Justin M. Briggs (jmbriggs) <jmbriggs@henrico.k12.va.us>; Matthew Cropper <mcropper@croppergis.com>; Superintendent <Superintendent@henrico.k12.va.us>; schoolboard <schoolboard@henrico.k12.va.us>
Subject: Re: Concerns over biased committee members

Use Caution: This message originated outside of Henrico County Public Schools. Use caution when opening attachments, clicking links or responding to requests for information.

Good Morning Chris,

Thank you for your follow up to my email, although I do not feel as though my concern of explicit biases has been addressed. In regards to the December meeting when Map D was created, I did not observe any consensus from the committee. I witnessed an opinion, of one individual, of moving one area. The committees had limited time to split and talk that evening so not sure how implications of moving that area would have had dedicated time to be discussed. I do wish these sessions were videotaped so that these in these instances, discrepancies could be reviewed. Your email did not address the elementary committee member advocating for his neighborhood, in t-shirt and holding banner, at the Godwin Public Session nor the policing of the committee members to ensure they remain neutral. Did the committee members receive guidelines or requirements they need to adhere to when they applied for this process and/or once they were selected? If so, can you send those to me or direct me where to find them on your website.

Thank you for your time helping me understand how HCPS staff and Cropper adhere to governance over the committee/committee members.

Melinda

-----Original Message-----

From: Christopher A. Sorensen (casorensen) <casorensen@henrico.k12.va.us>

To: Justin M. Briggs (jmbriggs) <jmbriggs@henrico.k12.va.us>; Matthew Cropper <mcropper@croppergis.com>;

Superintendent <Superintendent@henrico.k12.va.us>; schoolboard <schoolboard@henrico.k12.va.us>;

melinsean@verizon.net <melinsean@verizon.net>

Sent: Wed, Jan 15, 2020 5:32 am

Subject: RE: Concerns over biased committee members

Good morning Ms. Winterhalter,

I am sorry for the delayed response to your email.

Thank you for your comments and your continued participation in the process. I agree with your assessment that the committee and staff are working diligently to develop the best solution possible. Part of that process includes sharing different perspectives and approaches to developing solutions. Each committee meeting, however, includes time for the entire committee to discuss all individual comments and reach consensus on which perspectives and approaches best meet the guidelines and goals of the process.

I hope this addresses your concerns. Have a nice day.

Chris

Chris Sorensen
Chief Financial Officer
Henrico County Public Schools

From: Melinda Winterhalter <melinsean@verizon.net>

Sent: Friday, January 10, 2020 3:14 PM

To: Justin M. Briggs (jmbriggs) <jmbriggs@henrico.k12.va.us>; Christopher A. Sorensen (casorensen) <casorensen@henrico.k12.va.us>

Cc: Matthew Cropper <mcropper@croppergis.com>; Superintendent <Superintendent@henrico.k12.va.us>; schoolboard <schoolboard@henrico.k12.va.us>

Subject: Concerns over biased committee members

Mr. Briggs and Mr. Sorensen,

I had the opportunity to observe both the secondary and joint committee meeting this week as part of the redistricting process. It is apparent that most of the committee members and staff are truly working hard trying to come up with a solution and I applaud their efforts.

One observation that did concern me were two separate instances of both elementary and secondary members advocating for a particular solution that appear biased towards their own preferences rather than an impartial solution based on the county wide goals of this exercise.

First, it appears as if Map D was created by a committee member, not Cropper, at the December secondary meeting. When the committee met again on Wednesday and broke into smaller groups to make adjustments to maps, the first group stated that they focused on feeder pattern. It seems that is the sole area they focused on. When asked by the other group if socioeconomic disadvantage numbers were considered, at a blatant "NO!" was remarked. Aren't the committees supposed to take into account all of the guidelines/criteria? How can a map be relevant if created based solely on one criteria? The other group did say they focused on socioeconomic disadvantages, feeder patterns and capacity numbers. This is how I would expect the thought process to be as they are working on the maps.

Secondly, when at the joint committee meeting last night, I recognized an individual, who is one the elementary committee. I remember seeing him at the Godwin public meeting. When at the Godwin presentation, he stood out to me when advocating in full force with his neighborhood/area in opposition to certain maps! He was wearing T-shirt specifically made for that meeting and holding a banner representing his neighborhood! I was shocked seeing him on the committee last night!!! Committee members are not supposed to show favor towards one particular community, as that is being biased! Frankly, pondering over this last night and today, I do not understand how it is that he still on the committee?

How does staff and Cropper police and correct these instances where clear neighborhood bias by a committee member is injected into discussions that should be neutral and geared to the guidelines?

Thank you for your time in reading my concerns.
Melinda Winterhalter

Justin M. Briggs (jmbriggs)

From: Bridget Cunningham <cunningham_bridget@yahoo.com>
Sent: Wednesday, January 15, 2020 1:43 PM
To: Cara Jean L. O'Neal (cloneal)
Cc: Justin M. Briggs (jmbriggs); Christopher A. Sorensen (casorensen); Matthew Cropper; Superintendent; schoolboard
Subject: Guiding Principle - Reduce Concentration of Poverty

Use Caution: This message originated outside of Henrico County Public Schools. Use caution when opening attachments, clicking links or responding to requests for information.

Hello Ms. O'Neal,

I am a Crestview ES / Tuckahoe MS / Freeman HS parent and I just submitted the following statement on the general feedback form on the redistricting website. I am not sure if you see these submissions and wanted to include you. Here is what I wrote:

I have brought this up before amongst my other concerns, but this one key point is becoming more and more baffling to me. One of the guiding principals for redistricting is reducing concentrations of poverty. Nobody wants to talk about this, when we ask about this we get non-answers (we haven't looked into it, we're not sure, we need better numbers, etc, etc). Why haven't you looked at it yet? I feel like this is a no-brainer. Tucker is the socioeconomically disadvantaged HS (the poor school) in Richmond's west end. They have the highest free and reduced school lunches by a wide margin in the west end (50.5%). The only other school that comes remotely close is Freeman (31.9%). The other west end schools are all at or below 20%. Crestview ES is at 51.6% We add to Freeman's socioeconomic diversity - we make it less affluent. We will increase Tucker's concentration of poverty. Removing Crestview from Freeman makes Freeman more affluent and more similar to Deep Run, Godwin, and Glen Allen. You will have 4 very affluent schools in the west end and one poor one. THIS IS A GUIDING PRINCIPLE! Why are we still on the table to move out of Freeman and into Tucker? Is it because there just isn't another good option and so one of the guiding principals has to be sacrificed? If that is truly the case, it is a shame, but please let us know and remove it from the list so we can avoid the frustration.

Thank you. I really do appreciate all you do - but please look into this particular issue more closely.

Bridget Cunningham
804-677-4359

Justin M. Briggs (jmbriggs)

From: Superintendent
Sent: Tuesday, January 14, 2020 2:28 PM
To: Joseph Douglas; sheaforschools@gmail.com; pob@patobannon.com; Justin M. Briggs (jmbriggs); Christopher A. Sorensen (casorensen)
Subject: RE: School Redistricting

Good afternoon, Mr. Douglas,

Thank you for taking the time to share your feedback.

If you haven't done so, it is essential that the points noted in your e-mail be shared with the committee. This can be done online. The best way to communicate your concerns is through our website: <https://henricoschools.us/redistricting/>. All comments received are provided to the committee to review. All information and progress of the committee is posted on our website as well.

Your input is important in the process. Please do not fail to communicate to the committee charged with this task.

I see you have copied Chris Sorensen, Chief of Finance, and Justin Briggs, Education Specialist for Planning. Both are monitoring the work of the committee.

Kind regards,

Cheri Guempel

Policy & Constituency Services
Henrico County Public Schools
Office (804) 652-3714
Fax (804) 652-3856
www.henricoschools.us
[HCPS Policies & Regulations](#)



From: Joseph Douglas <josephadouglas@gmail.com>
Sent: Tuesday, January 14, 2020 2:02 PM
To: sheaforschools@gmail.com; William A. Pike, Jr (wapike) <wapike@henrico.k12.va.us>; Superintendent <Superintendent@henrico.k12.va.us>; pob@patobannon.com; Justin M. Briggs (jmbriggs) <jmbriggs@henrico.k12.va.us>; Christopher A. Sorensen (casorensen) <casorensen@henrico.k12.va.us>
Subject: School Redistricting

To All Concerned,

I am writing in support of the new Elementary School Option C, which keeps Oldhouse Run at Jackson Davis Elementary and no longer divides Oldhouse Run from Rockstone and the Pemberton Road JDES community. Oldhouse Run and Rockstone are essentially the same neighborhood, sharing an entrance and a bus stop. Thank you for listening to our concerns about splitting a residential neighborhood and keeping Oldhouse Run at JDES.

I also want to thank you for the most recent round of maps that take into consideration some of the community feedback you have received. I am writing in support of High School Option D, which takes into account the concerns of the Pemberton corridor about having our boundaries shifted and our community impacted repeatedly in HCPS redistricting processes. Option D maintains the feeder pattern that HCPS implemented as an important goal during the last redistricting just ten years ago. This feeder pattern brings together both sides of the Pemberton corridor to form one community at Quioccasin Middle School and Freeman High School. I support High School Draft Option D for the following reasons:

Option D follows the rules and guidelines for redistricting by using major roads as natural boundaries and supporting community and continuity for students during their K-12 education. For the zoning of the Pemberton corridor, Three Chopt Road forms a clear natural boundary for the Freeman High School zone, which is utilized in this option.

The Option D map helps bring all high schools in Henrico closer to ideal utilization numbers. The utilization of each high school is right at the goal/average in this option and optimally fills the extra space at the brand new Tucker High School.

Option D minimizes the impact on students compared to other options, impacting 784 students, as opposed to 1,092 students impacted by option C, 1,472 by option A, and 2,094 by option B. Every effort should be made to minimize student impacts in this process.

Option D avoids moving an arbitrary group of neighborhoods divided in the middle of a residential area on Pemberton Road, and minimizes repeated impacts on the same families more than once during their K-12 education. As stated by Mr. Cropper, every effort should be made to minimize repeated redistricting impacts on the same communities.

The entirety of the Pemberton corridor is in the Tuckahoe magisterial district. Option D keeps the Pemberton corridor together at Freeman High School, a Tuckahoe district school. This allows community members to have school board representation for our zoned school.

Residents of the Pemberton corridor live less than two miles from both Godwin and Freeman High Schools. Freeman is walkable for our students down Three Chopt or Quioccasin Rd. Moving us to Tucker would create a third feeder pattern, a third high school in ten years for much of the Pemberton corridor, and take us to the third farthest high school from our homes, across a major interstate. This is unreasonable.

HCPS created a new feeder pattern for the Pemberton corridor just ten years ago in order to meet the goals of that redistricting process, bringing together the students of the Pemberton corridor to attend Quioccasin MS and Freeman HS. The same communities and families should not be impacted repeatedly. We cannot build community and invest in our schools when our boundaries are constantly shifted.

Thank you for considering implementing high school option D or a similar option that would keep the Pemberton corridor at Freeman HS and prevent us from having to endure a second major boundary shift in two consecutive comprehensive redistricting projects.

Sincerely,

Joseph Douglas

9524 Chapin Dr