



2025-26 Redistricting Study

Public Information Session #3
April 6, 2026

*Presented by: Scituate Public Schools and
Cropper GIS Consulting*

Project History: The Need for Redistricting

- The MSBA set the new building capacity at 460 students.
- With over 368 students at Cushing and 250 students at Hatherly (totalling 618 students), we have always known and transparently discussed that we will need to redistrict.
- We have ample space at Wampatuck and Jenkins schools for more elementary students to accommodate this need—as MSBA determined.
- Town Planning for Future Development

A screenshot from the 2023-24 "Roadshow" presentations that were conducted at every school and around town (8 total presentations)

MSBA Formula

As a part of the MSBA process, all elementary spaces were evaluated to determine the space available to be used in our current buildings which was used to formulate the space and enrollment capacity of the new building.

- **Total students: 618**
 - Cushing Elementary School - 368 students
 - Hatherly Elementary School - 250 students
- **Based on the space available in other elementary schools, what is the capacity for the new building project & how many students will need to be dispersed among other elementary schools?**
 - Capacity of the new building project = 460 students
 - $618 - 460 = 158$ students will need to be dispersed to current available spaces

BILL

Our Guiding Principles for Redistricting

Ensuring an inclusive process

- We have held 2 public meetings so far in person and via zoom with public input via two surveys available on a dedicated website for anyone to access.

Minimizing social/emotional impact on children

- 18 month runway with district leadership team and SEL team as well as new SEA Director
- Every elementary school is currently working with their School Council, which includes principals, teachers, and caregivers elected by their peers, to draft a School Improvement Plan goal focused on redistricting supports at their school over the coming year+.
- We already have strong models to learn from—both in the transition planning that already occurs when we bring students together for 6th grade and from past experiences of redistricting in town from which we can learn.

Our Guiding Principles for Redistricting Cropper GIS

Keeping families and neighborhoods together

- The initial survey asked specifically for feedback on “planning blocks” created to facilitate redistricting so that neighborhoods would be zoned in cohesive blocks that make sense to the people who live in them. These planning blocks form the basis for the draft plans that have been shared back with the community and are still able to be edited with community feedback.

Communication

- As stated above, we have held a number of public meetings throughout the entire school building process and engaged the community throughout the visioning and design of the building, the particulars of the building itself, information sessions prior to the townwide vote on the project, and ongoing public meetings since.
- Redistricting itself, as mentioned, has included 2 public sessions, 2 open surveys thus far.

Redistricting Priorities

We held our initial public information session in December 2025 at which five priorities were established to guide this work which connect directly back to the originally established 2023 guiding principles:

1. Balancing enrollment across all three schools, with approximately 20 students per classroom
2. Keeping students close to home
3. Minimizing the number of students who need to move from their existing school
4. Maintaining contiguous, intact neighborhoods
5. Facilitating efficient transportation and reasonable bus times

Time Line

March 16, 2026	SC announces that we have directed Cropper GIS to craft an Option 3 based on feedback from the community.
March 31, 2026	Option 3 shared via email to entire district - Survey to remain open until April 17, 2026
April 6, 2026	Public Information Session III
April 27, 2026	Cropper and IPT will present their recommendation to the School Committee at regularly-scheduled School Committee meeting.
May 18, 2026	School Committee will vote to finalize the redistricting plan at our regularly-scheduled School Committee meeting.

Definitions

Capacity –the number of students that an individual school has the physical capacity to enroll and can be reasonably accommodated in a facility.

Utilization - Utilization is the total enrollment divided by the capacity, described as a percentage.

Enrollment - Actual number of students enrolled.

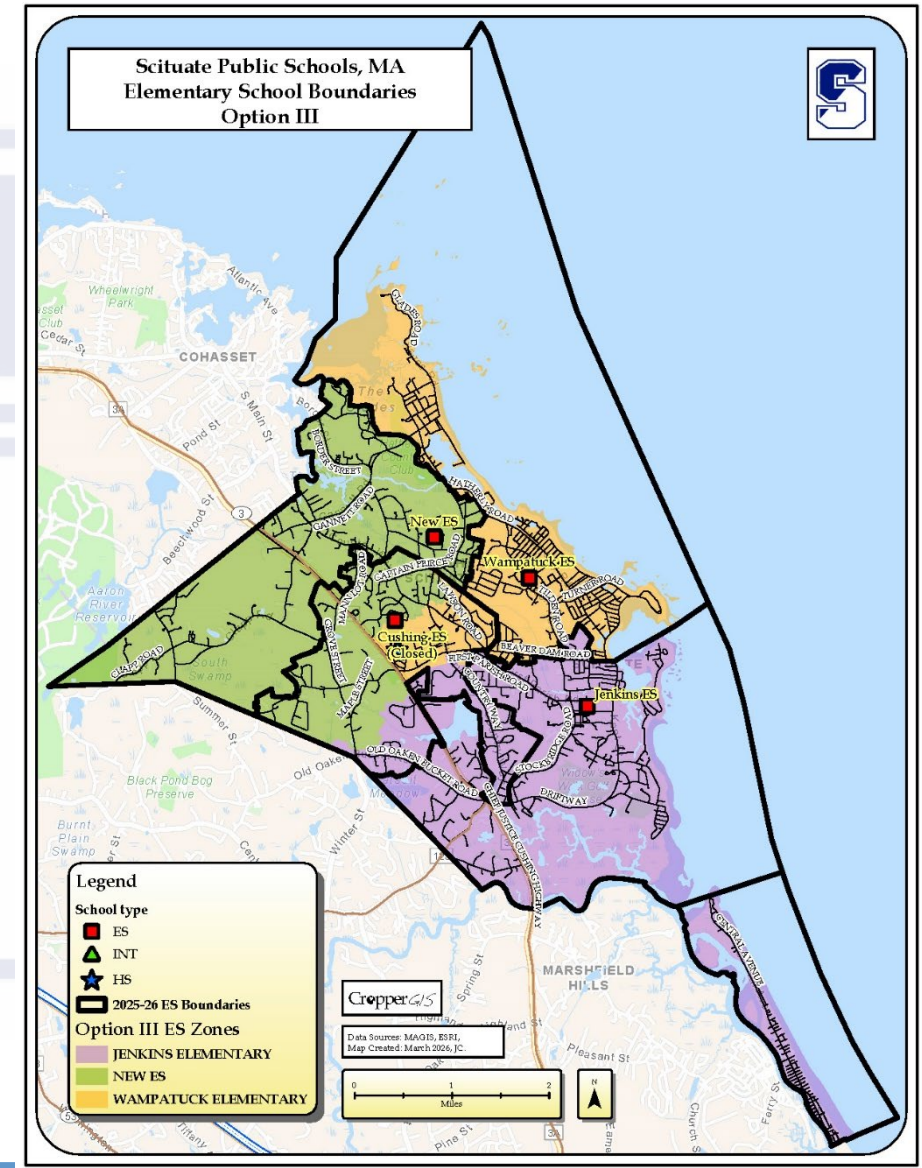
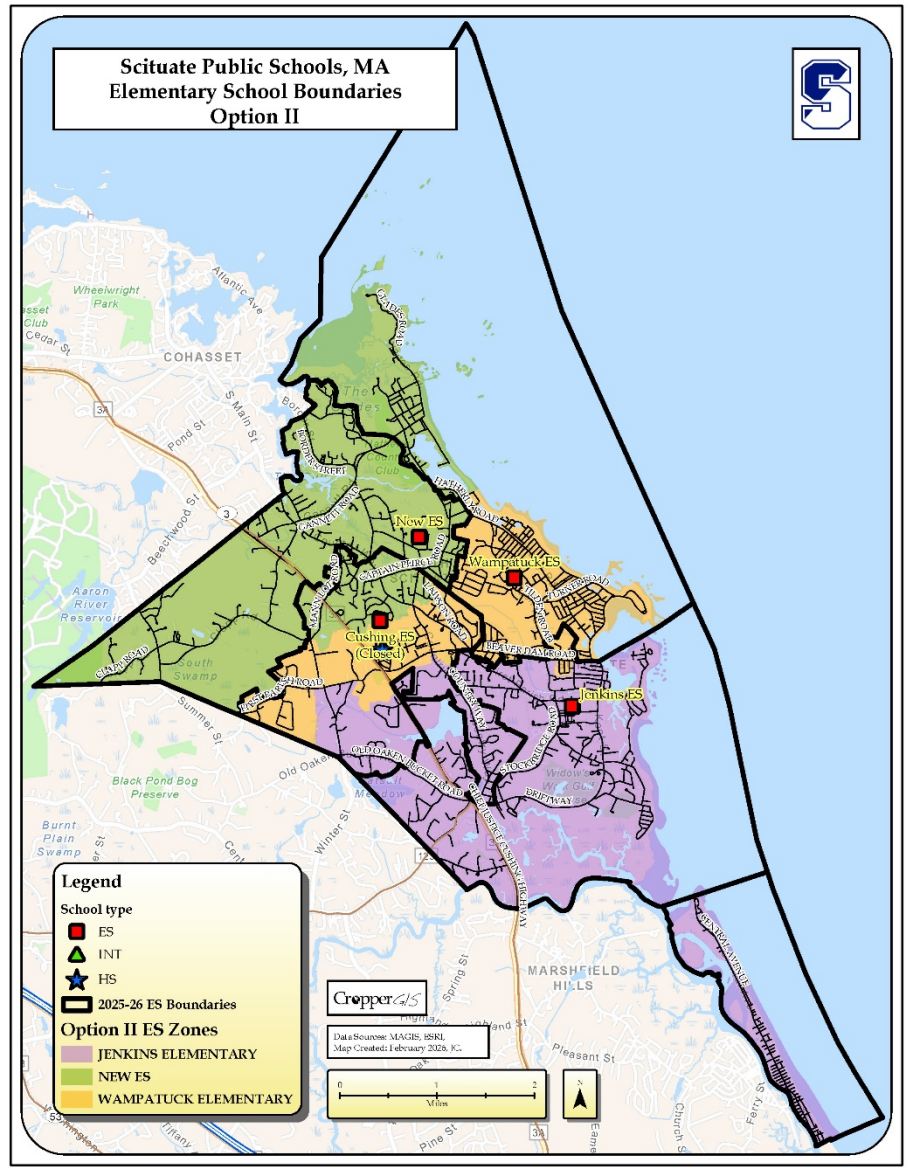
Live In students – Students residing inside of a school attendance boundary, regardless of where that student attends school.

Out of District students – Students residing outside of the district's boundary but attending a school within the district.

Development of Option III

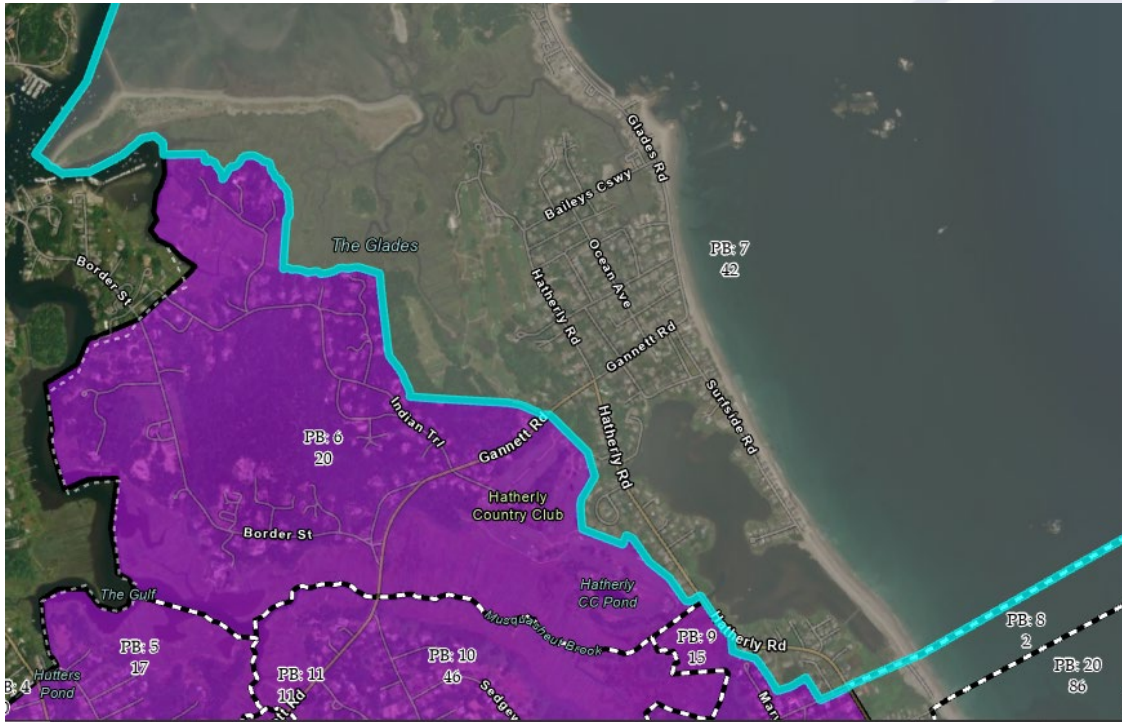
- Options I and II were presented to the community during the Public Information Session on March 4, 2026.
- Following that session, the IPT collected and reviewed feedback from families, staff, and community members.
- This feedback directly informed targeted refinements to Option II, resulting in the development of Option III presented this evening.
- Option III maintains the core structure of Option II while addressing key community priorities, including:
 - Reducing impacts to Wampatuck Elementary School
 - Reducing impacts to Jenkins Elementary School
 - Increasing the portion of Cushing Elementary School students assigned to the New Elementary School
 - These adjustments reflect a balanced approach that incorporates community input while continuing to support equitable enrollment and long-term district goals.

DRAFT Option II vs Option III ES Zones



DRAFT Option III ES Zones

Primary Change Areas - Option III

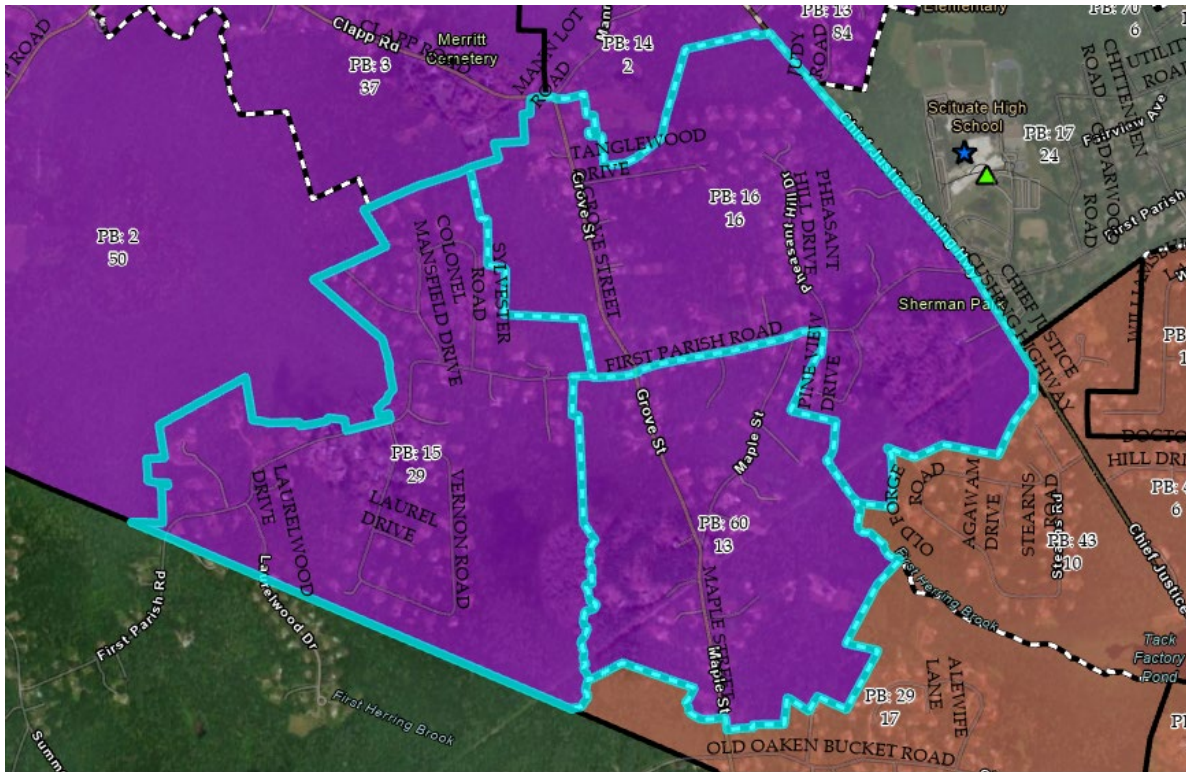


Northern Coastal Adjustment (Glades /Wampatuck area)

- Planning Block 7 back to Wampatuck ES.
- This PB was moved to the New ES, but is shifted to stay in Wampatuck ES in Option III, reducing community impacts.

DRAFT Option III ES Zones

Primary Change Areas - Option III



Central Transition Zone (Grove St / Maple St Area)

- Planning Blocks 15 and 16 were in Wampatuck ES in Option II, but these are moved to the New ES in Option III.
- Planning Block 60 is a new block created. There are 13 students. This block consists of Grove St, Maple St, and surrounding residential streets down to Old Oaken Bucket Rd to better balance enrollment.
- Planning Block 60 is reassigned from Jenkins ES in Option II to the New ES in Option III.
- Creates a cleaner, more continuous boundary and increases the flow of students from the Cushing ES area into the New ES.

DRAFT Option III ES Zones

Primary Change Areas - Option III



Northern Inland Pocket (Beaver Dam Rd / Tilden Rd Area)

- Planning Block 63 and 64 were assigned to Wampatuck ES in Option II, but these are moved back to Jenkins ES in Option III (where they are currently assigned).
- This area is north of Beaver Dam Rd including neighborhoods around Tichnor Pl, Tichnor Ct, and Poplar Ave south of Beaver Dam Rd.
- Eliminates small “pocket” assignments from Option II, reduces the number of students moved/impacted, and improves geographic cohesion.

Resulting Enrollment & Utilization

School	Capacity		2025-26			2027-28 Estimated Utilization					
	2025-26	2027-28	Total Enrollment	+ / -	%	Option II			Option III		
						Estimated Enrollment	+ / -	%	Estimated Enrollment	+ / -	%
Cushing Elementary (Discontinued)	460		344	-116	74.8%						
New ES (@Hatherly Site)	420	480	276	-144	65.7%	456	-24	95.0%	476	-4	99.2%
Jenkins Elementary School	420	440	335	-85	79.8%	432	-8	98.2%	434	-6	98.6%
Wampatuck Elementary School	480	440	330	-150	68.8%	418	-22	95.0%	396	-44	90.0%
	1780	1360	1285	-495	72.2%	1306	-54	96.0%	1306	-54	96.0%

Resulting Student Impacts

Student Impact Estimates	
Name	Estimated Number of Students Impacted
Option I	666
Option II	664
Option III	607



Honoring the Past, Shaping the Future

A Community Transition in Scituate, Massachusetts

Celebrating Legacy & New Beginnings

- Closing Two Elementary Schools
- Opening One New School
- Honoring **125 Years** of Jenkins Elementary
- Celebrating **70 Years** of Wampatuck Elementary

Together, we recognize the history, honor the impact, and look ahead to a bright future for Scituate's students.

Community Transition Plans

Promoting sense of excitement and belonging for all

- Fall 2026: Community Transition Planning Teams (SPS Teachers, PTO's, School Councils)
 - Gather input for ideas to ensure all students and staff feel welcome and valued
 - Plan events and communications to provide opportunity for community building
- Spring 2027 - Fall 2027: Implement Community Transition Plans
 - Coordinated family events
 - Communications - newsletters, FAQs, etc.
 - Orientation Tours
 - Playground Meet Ups
 - School spirit welcome gifts for staff and students
 - Earlier release of class lists