



2025-26 Broadleigh Realignment Process

Public Information Session 1
September 10, 2025

*Presented by: Columbus City Schools
and Cropper GIS Consulting*



Cropper GIS

Welcome and Introductions

Cropper G/S

Who We Are

Cropper G/S

The Facilitator

Cropper GIS Consulting, LLC

- K-12 school planning is our business and our passion. Our specialty is facilitating realignment processes.
- Cropper GIS works with K-12 school districts to:
 - Develop realignment plans
 - Facilitate community engagement
 - Perform demographic studies
 - Prepare long-range facility master plans
 - Conduct housing and pupil yield-factor studies

Matthew Cropper, Cropper GIS

- 20+ years experience providing GIS mapping and analysis services to school districts and other clients
- Facilitated boundary realignment projects across the U.S.
- Published numerous times on topics related to K-12 facility and realignment processes

The Company

Recent Projects:

- Cincinnati Public Schools, OH
- Dublin City Schools, OH
- Groveport Madison Schools, OH
- Westerville City Schools, OH
- Worthington Schools, OH
- Huber Heights City Schools, OH
- Akron Public Schools, OH
- MSD Washington Township, IN
- Baltimore County Public Schools, MD
- Charlotte Mecklenburg Schools, NC
- Charleston County Schools, SC
- Covington Independent Schools, KY



Project Objectives

Columbus City Schools is undertaking a realignment process to address imbalances in school utilization and enrollment, and to pro-actively account for future growth within the district. Columbus City Schools has begun a realignment process to meet the following key objectives:

- **Primary Objective:** Reassign students who currently attend Broadleigh Elementary, due to the discontinued use of the building as an elementary school.
- **Secondary Objectives:** Ensure the district is maintaining equity in each building regarding ethnic and socioeconomic demographics. Middle school & high school attendance boundaries located in the Broadleigh ES area will also be evaluated in order to align feeder patterns.

Realignment Process

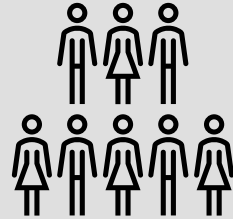
Cropper GIS Consulting was hired by Columbus City Schools to facilitate and manage the project. Our firm is tasked to:

- A. **Develop** supporting materials to help facilitate the process.
- B. **Facilitate** an expert-based process of developing a student realignment plan.
- C. **Empower** the community throughout the process.
- D. **Leverage** expertise to develop logical, efficient, and effective student realignment options with the planning team.
- E. **Recommend** a realignment plan to the district.

Realignment Process Criteria



- Balance school facility utilization – Make every effort to have equitable utilization (where possible) across the district and in accordance with school capacities. Make efficient use of available space.



- Consider economic, cultural, and ethnic diversity – Ensure schools are inclusionary and not adversely affected by the realignment process.



- Close Proximity – Students should be assigned to the school within the closest proximity to their homes where possible.



- Maximize busing efficiencies in transportation of students – Make every effort to account for transportation (school bus and car rider), parent commuting patterns, balance busing travel time, and costs.



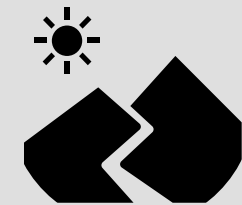
- Make every effort to establish contiguous zones – Avoid creating zones that are not connected to the primary attendance zone, where possible.



- Account for future growth – Allow for increasing attendance in high growth areas.



- Minimize impact on students - Attempt to minimize the number of students impacted when making boundary adjustments.



- Use major roads and natural boundaries wherever feasible to define attendance zones – Minimize the number of students who need to cross major intersections and other barriers to maximize the safety and security of students.

Stakeholders

Cropper G/S

Stakeholders

Outline of Stakeholder Responsibilities	
Consultant	<ul style="list-style-type: none"> Schedule and facilitate internal planning team meetings and public advisory committee meetings. Communicate updates with planning team, including updated handout and meeting schedule logistics. Conduct public meetings to solicit feedback related to draft options that are under consideration. Support the district in providing materials such as presentations, handouts, and online interactive maps for the public's consumption. Coordinate and summarize online feedback received from <u>general public</u>, internal planning team, and public advisory committee.
Internal Planning Team	<ul style="list-style-type: none"> Consists of key school district administrators including central office, transportation, planning, and school principals. Group will work to review draft options that are being developed in preparation to share with the district and public. Review input provided from the consultant, <u>general public</u>, and public advisory committee regarding draft options and continue to modify maps with a focus on the best solution for all <u>students as a whole</u>. Recommend a realignment plan that best meets the criteria for the district.
Public Advisory Committee	<ul style="list-style-type: none"> Made up of public officials, parents, and business leaders in the CCS District area. Reviews work of the internal planning team and provides direct feedback based on local knowledge of the district and the region. Help the consultant and the internal planning team to prepare for the second public information session, where draft options will be presented to the public. Will review public feedback after both public information sessions. Members are charged with representing the Columbus City Schools <u>community as a whole, not individual school zones or neighborhoods</u>.
General Public	<ul style="list-style-type: none"> Informed through website. Invited to submit comments and input throughout the entire process. Invited to participate in public information sessions (both virtual and in-person), and to provide input via surveys and online community feedback form.
Superintendent	<ul style="list-style-type: none"> Charge internal planning team with its responsibilities. Identify questions the planning team is expected to answer. Advise staff and the process regarding policy related considerations.

Timeline

Cropper GIS

Timeline

Timeline for Realignment Process

	June 2025	July 2025	Aug. 2025	Sept. 2025	Oct. 2025	Nov. 2025
<i>Data Collection</i>						
<i>Data Analysis/ Assimilation</i>						
<i>Baseline Options Development</i>						
<i>Internal Planning Team Work (1-2 meetings per month)</i>						
Public Information Session #1 : Present Project Process, Criteria, Timeline, and Realignment Objectives to Community. Web-based and On-site meeting.				9/10		
<i>Public Advisory Committee Meeting 1</i> <i>- Review Background Data, Objectives, and Fall Planning Logistics</i>				9/16		
<i>Public Advisory Committee Meeting 2</i> <i>- Review DRAFT Options</i>				9/30		
Public Information Session #2: Present DRAFT Realignment Options to General Public for Comment/Feedback. Web-based and On-site meeting to review options and q/a at end of session.					10/8	
<i>Public Advisory Committee Meeting 3</i> <i>- Review Survey Feedback/Results, Final considerations regarding DRAFT Options</i>					10/22	
<i>Finalize Realignment Plans</i>						

Project Approach

Cropper G/S

Realignment Process Phases

PHASE 1

DATA COLLECTION

Pertinent data will be collected throughout the life of the realignment process.

This data includes a wide array of GIS data, student enrollment data, and current/future school facility data.

Data collected is provided by Franklin County and Columbus City School District.

PHASE 2

DATA ASSIMILATION

All data collected must be integrated into GIS to enable quick and efficient analysis and options development.

Student data will be geocoded so we can map out where students live in relation to school boundaries.

School attendance boundaries will also be used in conjunction with neighborhood (subdivision) data from the counties to develop planning blocks which outline small geographic areas highlighting student populations.

PHASE 3

BACKGROUND REPORT & BASELINE OPTIONS DEVELOPED

A background report is developed during Phase 3 and distributed to stakeholders.

The background report outlines the key objectives, guidelines & criteria, stakeholders' roles, overview of expected mapping conventions, and current enrollment statistics relating to the realignment process.

A baseline set of options is then developed as a starting point for the IPT team to began evaluating realignment options. They can keep them as an option, alter, or disregard them entirely.

PHASE 4

OPTION ANALYSIS: IPT MEETINGS & PUBLIC INFO

The IPT will typically meet 1-2 times a month over a period of 3-4 months participating in option building exercises as they create/modify/review different realignment options.

The PAC will meet three times to review the work of the IPT and feedback from the public to help guide the process.

Two public information sessions will be held to provide the general public with an opportunity to understand the realignment process, as well as to solicit feedback regarding draft options.

Data Collection

Data availability and quality are central to this realignment process. A comprehensive collection of data is compiled throughout the life of the process. Data collected includes:

- School District– Official enrollment counts by school by grade, along with enrollment databases by address. Data/feedback regarding transportation, school locations, facility information.
- City / County Sources– Base GIS data (address pts, municipalities, subdivisions, existing and planned developments, road networks, etc.)

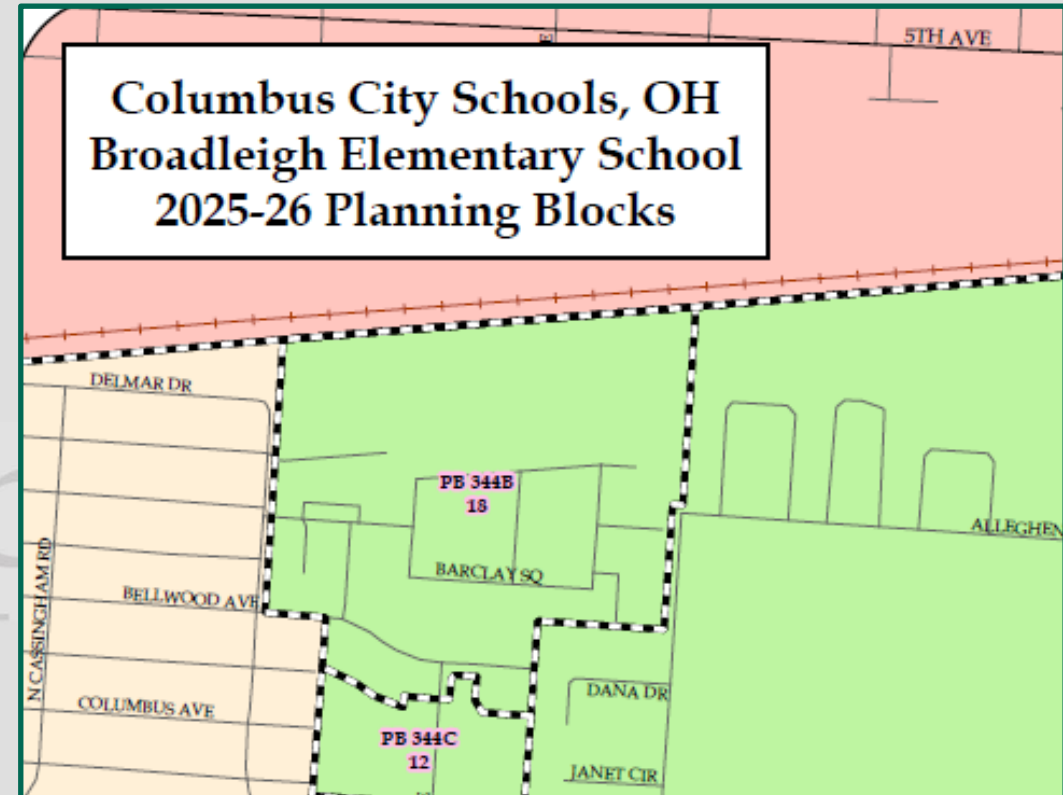
Data collection efforts have been underway through the summer, and information will continue to be collected throughout the process if it is deemed useful.

Data Assimilation

Cropper is tasked to develop several key pieces of information to help facilitate the realignment process.

Once data is collected, it is necessary to integrate it into GIS to enable quick and efficient analysis and realignment options development. This includes, but is not limited to, geographically mapping out:

- Attendance zones
- Student's home addresses
- Planning Blocks



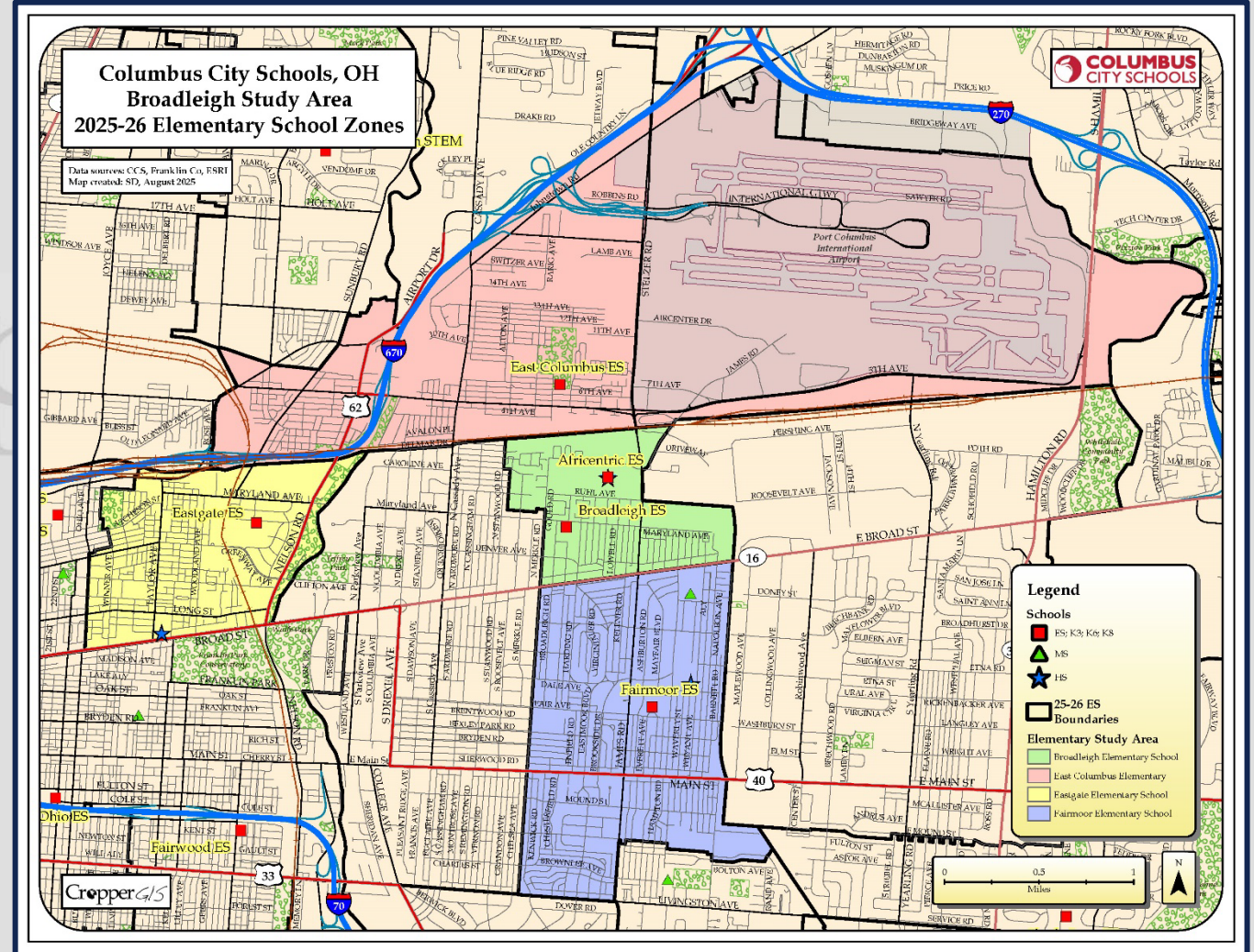
Planning Blocks: small areas created for examining student populations in each area:

- Based on Fall 2024 Student Enrollment. The top labels show the Planning block ID (PB #). The bottom labels show the number of K-5 CCS students that live in the planning block and attend their zoned school.

Phase 2

Realignment Process Study Area

- Maps showing attendance zones for all elementary schools in the study area.



Phase 2

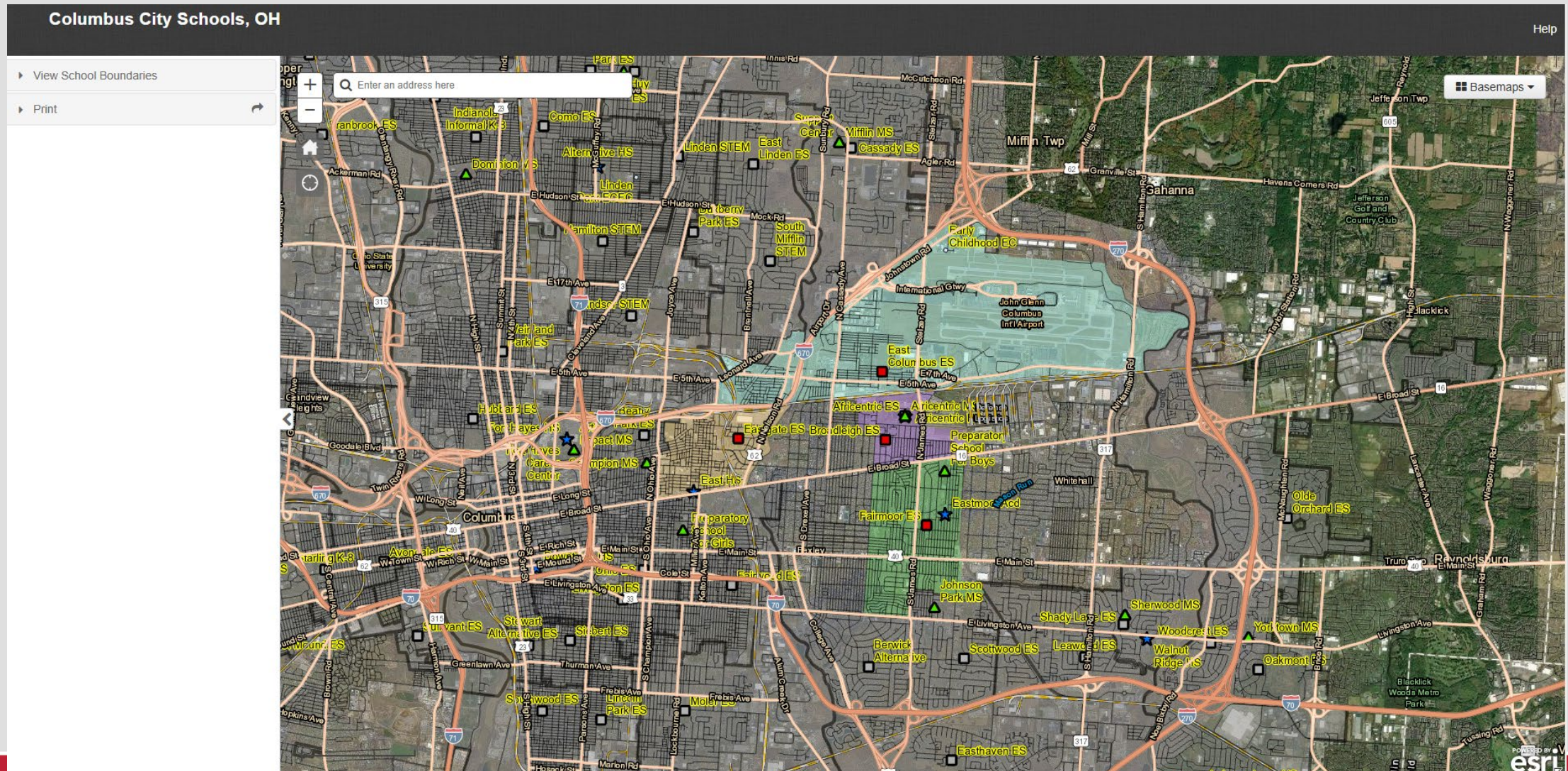
Interactive Webmap

- An online map has been developed to further inform all stakeholders on the work of the internal planning team.
- Current zones and options can be viewed on the map.
- Other features can be turned on/off on the map, including planning blocks.
- Map is customizable and can/will be updated during the process to show new options along with other information requested by the internal planning team.
- Site can be viewed on any device, including mobile devices and tablets (with internet connection).
- Site address is:

<https://croppermap.com/ccsoh/broadleigh/>

Phase 2

Interactive Webmap



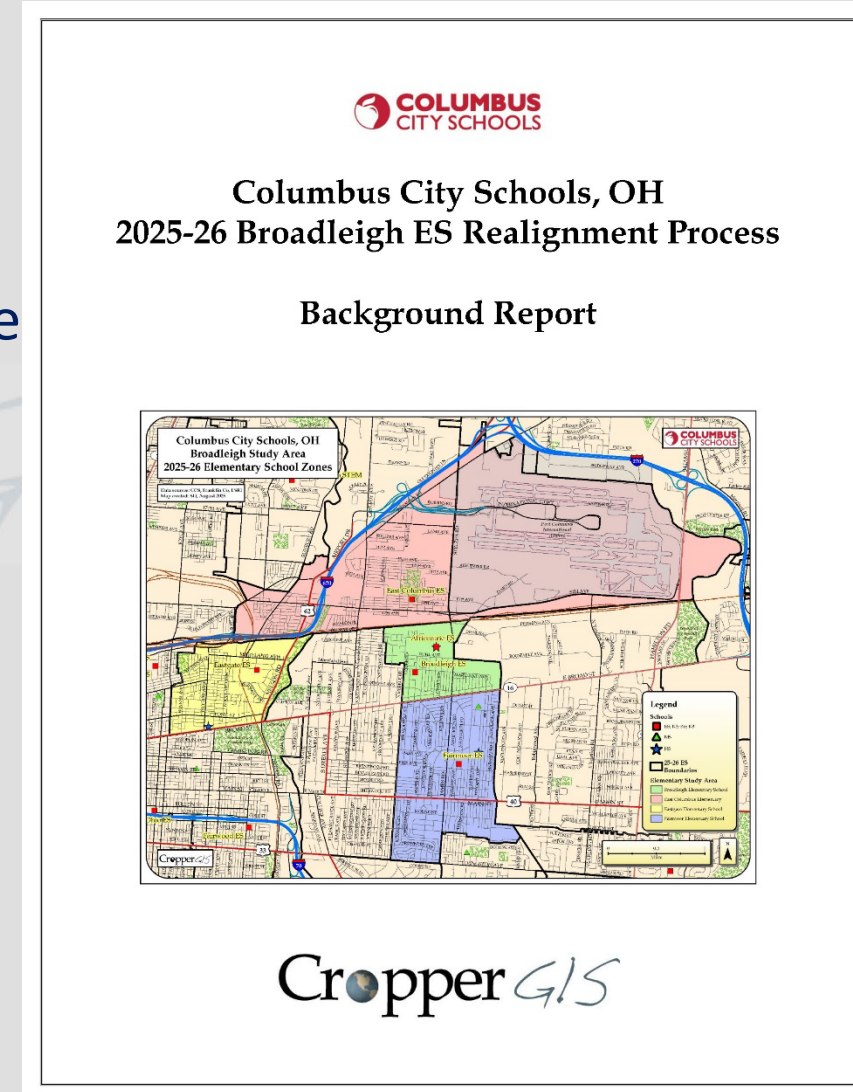
Background Report Development

The Background Report Purpose:

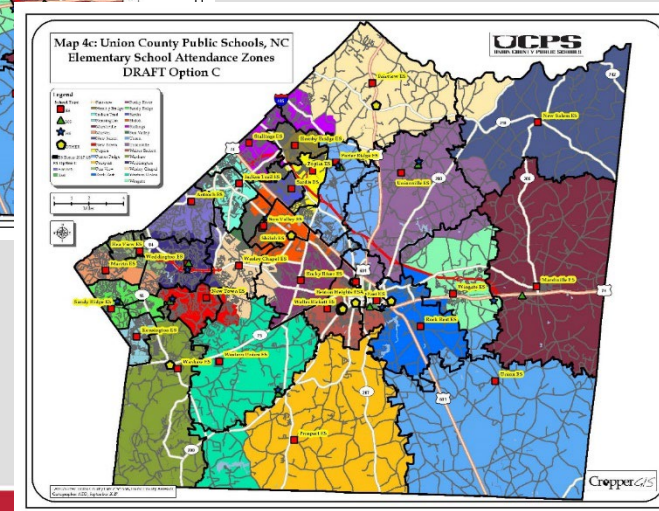
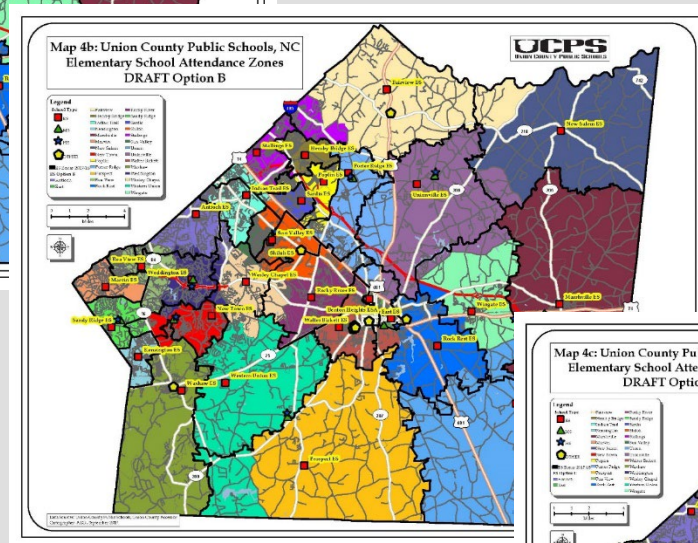
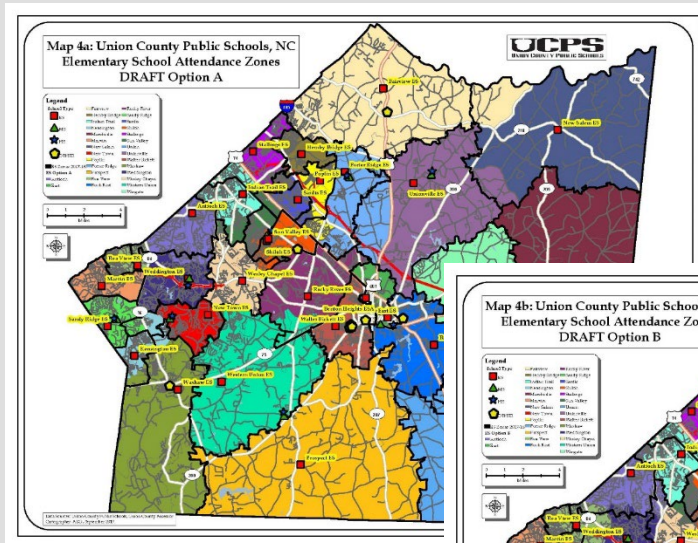
- To expand the knowledge of each stakeholder
- To help share a message that is consistent and accurate

Please be familiar with the entire report, and note some sections:

- Background and Key Objectives (p. 1)
- Realignment Process Criteria (p. 1)
- Student Realignment Process (p. 2)
- Process Timeline (p. 4)
- Planning Block Maps (p. 12)
- Enrollment and Utilization Tables (p. 18)



Baseline Options Development



To expedite the process and empower the community, it is best to begin with a series of baseline realignment options.

Baseline options will be shared with the internal planning team at their next meeting in September.

Internal Planning Team and Public Engagement

The Internal Planning Team will meet 1-2 times per month from September 2025 through November 2025 to analyze data, review attendance zones, and develop realignment options.

The Public Advisory Committee will meet three times in September and October 2025 to review the work of the Internal Planning Team and consultant, to review feedback from the general public, and to help guide the process.

At the second public information session on October 8, 2025, the work of the team will be shared, and community members will have an opportunity to discuss the planning team's work with staff and planning team members.

Valuable information will also be gathered via a community survey that will take place after the information session.

The consultant, on behalf of the work by the Internal Planning Team, Public Advisory Committee and public input, will recommend a realignment plan in November 2025.

Communication Logistics

Cropper GIS

Communication Logistics

Visit the Realignment Process Web site at tinyURL.com/SchoolsRealign



The screenshot shows the Columbus City Schools website's "School Realignment Recap" page. The header includes the Columbus City Schools logo and a navigation menu with links to Home, Our District, News, Students & Families, Staff, Departments, Board of Education, and Title IX. A breadcrumb trail indicates the current location: Home > Our District > School Realignment > Recap. On the left, a sidebar titled "School Realignment" lists links for Recap, Frequently Asked Questions (FAQs), School Board's Decision, Community Facilities Task Force, and Background Information. The main content area features a large banner with the text "SCHOOL REALIGNMENT RECAP" and "School Realignment Mapping Our Future". The banner includes the Columbus City Schools logo, a bar chart with three bars of increasing height (dark blue, red, light blue), and the word "Recap" in a large, red, cursive font. Below the banner, the text "SUPPORTING MATERIALS" is visible.

COLUMBUS CITY SCHOOLS

Home Our District News Students & Families Staff Departments Board of Education Title IX

Home > Our District > School Realignment > [Recap](#)

School Realignment

Recap

Frequently Asked Questions (FAQs)

School Board's Decision

Community Facilities Task Force

Background Information

SCHOOL REALIGNMENT RECAP

School Realignment

Recap

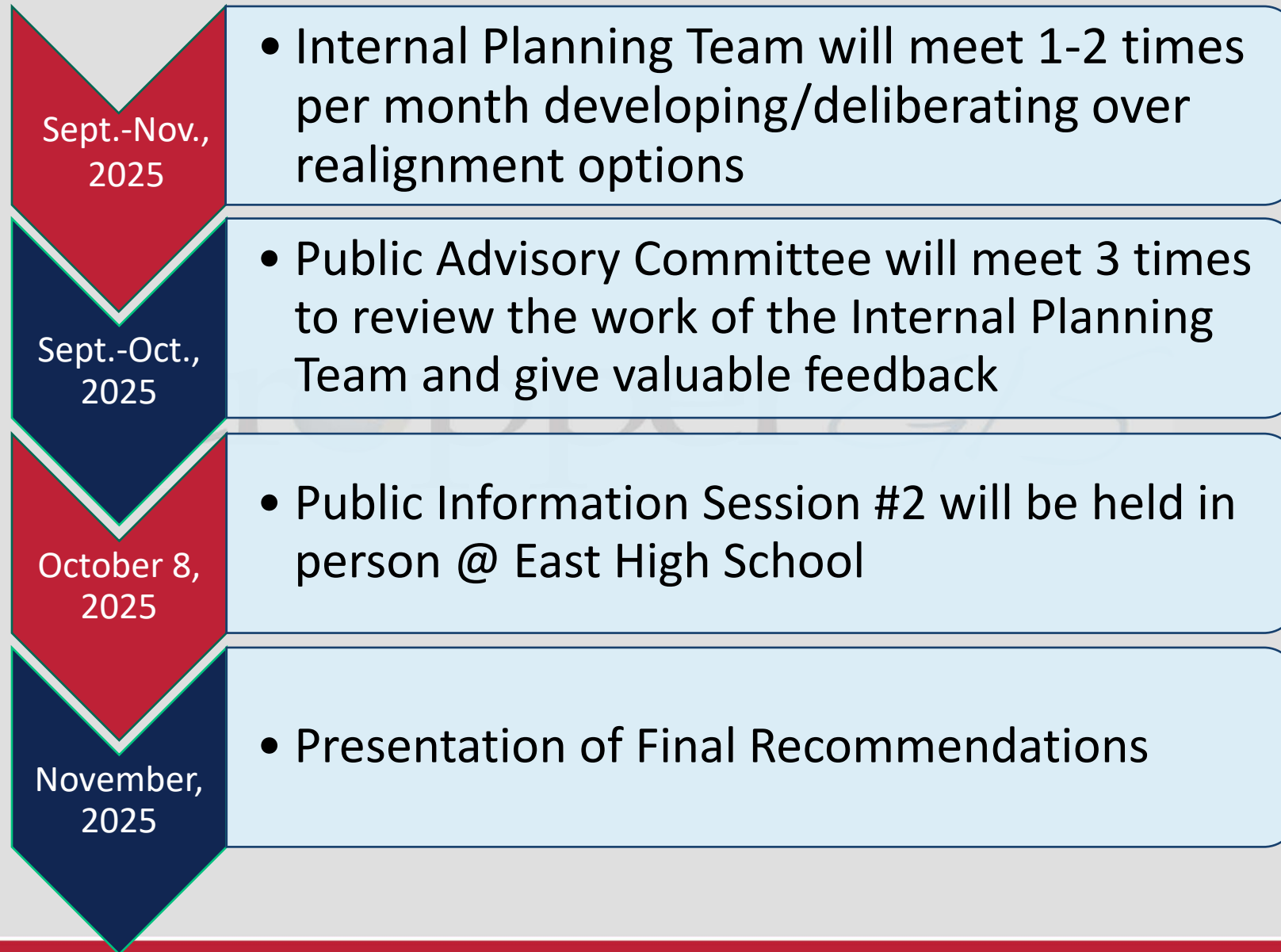
MAPPING OUR FUTURE

SUPPORTING MATERIALS

Stay Informed – Provide Feedback

- Submit comments via the online [Columbus City Schools – Broadleigh Elementary Realignment Process: Community Feedback Form](#) Comments are logged verbatim to the Web site for public viewing
- Attend the Public Information Session 2 on October 8, 2025
 - Location: East High School (1500 East Broad St, Columbus, OH 43203)
 - Present DRAFT Realignment Options to the General Public for Comment/Feedback.
- Participate in an Online Survey from October 8 – October 21, 2025

Next Steps





Thank You!



Cropper G/S