



2025 Redistricting Study

Public Information Session 1
August 26, 2025

*Presented by: Dublin City Schools and
Cropper GIS Consulting*



Cropper GIS

Welcome and Introductions

Cropper G/S

Who We Are

Cropper G/S

The Facilitator

Cropper GIS Consulting, LLC

- K-12 school planning is our business and our passion. Our specialty is facilitating redistricting processes.
- Cropper GIS works with K-12 school districts to:
 - Develop redistricting plans
 - Facilitate community engagement
 - Perform demographic studies
 - Prepare long-range facility master plans
 - Conduct housing and pupil yield-factor studies

Matthew Cropper, Cropper GIS

- 20+ years experience providing GIS mapping and analysis services to school districts and other clients
- Facilitated boundary change study projects across the U.S.
- Published numerous times on topics related to K-12 facility and boundary change processes

The Company

Recent Projects:

- Cincinnati Public Schools, OH
- Columbus City Schools, OH
- Groveport Madison Schools, OH
- Westerville City Schools, OH
- Worthington Schools, OH
- Huber Heights City Schools, OH
- Akron Public Schools, OH
- MSD Washington Township, IN
- Baltimore County Public Schools, MD
- Charlotte Mecklenburg Schools, NC
- Charleston County Schools, SC
- Covington Independent Schools, KY



Project Objectives

Funded by the approval of the 2023 levy and bond issue, the Dublin City School District is initiating a redistricting study to proactively address key challenges, including rapid enrollment growth at Jerome High School, the uneven distribution of students across the district, and the need to maintain cost-effective operations across all facilities.

This redistricting effort aims to balance enrollment among the district's three high schools, ensuring equitable access to educational resources and opportunities for all students.

The outcome of this study will inform a redistricting plan to be approved by the Superintendent, with implementation scheduled for the 2026–2027 school year. The Dublin City Schools redistricting study is guided by the following key objectives:

- Jerome High School's rapid enrollment growth.
- The uneven distribution of students across the district.
- The need for cost-effective operations.

Redistricting Study

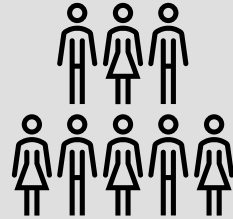
Cropper GIS Consulting was hired by Dublin City Schools to facilitate and manage the project. Our firm is tasked to:

- A. **Develop** supporting materials to help facilitate the study.
- B. **Facilitate** an expert-based process of developing a student redistricting plan.
- C. **Empower** the community throughout the process.
- D. **Leverage** expertise to develop logical, efficient, and effective student redistricting options with the planning team.
- E. **Share** the final redistricting plan to the School Board.

Redistricting Study Criteria



- Balance school facility utilization – Make every effort to have equitable utilization (where possible) across the district and in accordance with school capacities. Make efficient use of available space.



- Consider economic, cultural, and ethnic diversity – Ensure schools are inclusionary and not adversely affected by redistricting decisions.



- Close Proximity – Students should be assigned to the school within the closest proximity to their homes where possible.



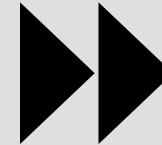
- Maximize busing efficiencies in transportation of students – Make every effort to account for transportation (school bus and car rider), parent commuting patterns, balance busing travel time, and costs.



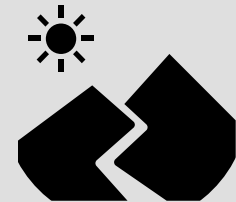
- Make every effort to establish contiguous zones – Avoid creating zones that are not connected to the primary attendance zone, where possible.



- Account for future growth – Allow for increasing attendance in high growth areas.



- Establish clear feeder patterns and continuity – Make every effort to establish a clear feeder pattern system.



- Use major roads and natural boundaries wherever feasible to define attendance zones – Minimize the number of students who need to cross major intersections and other barriers to maximize the safety and security of students

Stakeholders

Cropper G/S

Stakeholders

Outline of Stakeholder Responsibilities	
Consultant	<ul style="list-style-type: none">• Schedule and facilitate internal planning team meetings.• Communicate updates with planning team, including updated handout and meeting schedule logistics.• Conduct public meetings to solicit feedback related to draft options that are under consideration.• Support the district in providing materials such as presentations, handouts, and online interactive maps for the public's consumption.• Coordinate and summarize online feedback received from general public and internal planning team.
Internal Planning Team	<ul style="list-style-type: none">• Consists of key school district administrators including central office, transportation, planning, and school principals.• Group will work to review draft options that are being developed in preparation to share with the School Board and public.• Review input provided from the consultant and general public regarding draft options and continue to modify maps with a focus on the best solution for all students as a whole.
General Public	<ul style="list-style-type: none">• Informed through website.• Invited to submit comments and input throughout the entire process.• Invited to participate in public information sessions (both virtual and in-person), and to provide input via surveys and online general feedback form.
Superintendent	<ul style="list-style-type: none">• Charge internal planning team with its responsibilities.• Identify questions the planning team is expected to answer.• Share the final map with the Board Education.

Timeline

Cropper G/S

Timeline

Redistricting Process & Timeline								
	May 2025	June 2025	July 2025	August 2025	September 2025	October 2025	November 2025	December 2025
Data Collection								
Data Analysis / Assimilation								
Internal Planning Team Work (1-2 meetings per month)								
Public Information Session #1 : Present Project Process, Criteria, Timeline, and Enrollment Plan Objectives to Community. Information meeting to public. No Options shared at this point. (Webinar)				8/26				
Public Information Session #2: Present DRAFT Enrollment Plan Options to General Public for Comment/Feedback (In-Person) - 6pm @ Coffman HS - 7:30pm @ Jerome HS					9/29			
Redistricting Options Survey Period					9/29 - 10/12			
School Determination Form for 2026–2027*							11/11 - 12/5	
Presentation of Redistricting Plan to the Board of Education							11/10	

*Students will be assigned to the high school that serves their residential address beginning with the 2026–2027 school year.

-Default Assignment: Students will attend the high school assigned by the new boundaries, which will be announced on November 10, 2025. No action is needed if a student will attend the high school assigned to their residence.

-Option to Remain if Impacted: Students currently in grades 9–11 (Classes of 2027, 2028, and 2029) who are impacted by redistricting may choose to remain at their current home high school. Those who wish to remain at their current high school must complete the School Determination Form by December 5, 2025.

-No Option to Remain: Students in 8th grade (Class of 2030) and younger will attend the high school assigned to their residence.

Project Approach

Cropper G/S

Redistricting Study Phases

PHASE 1

DATA COLLECTION

Pertinent data will be collected throughout the life of the redistricting study

This data includes a wide array of GIS data, student enrollment data, and current/future school facility data

Data collected is provided by Delaware, Union, & Franklin County Governments, and Dublin City School District

PHASE 2

DATA ASSIMILATION

All data collected must be integrated into GIS to enable quick and efficient analysis and options development

Student data will be geocoded so we can map out where students live in relation to school boundaries

School attendance boundaries will also be used in conjunction with neighborhood (subdivision) data from the counties to develop planning blocks which outline small geographic areas highlighting student populations

PHASE 3

BACKGROUND REPORT & BASELINE OPTIONS DEVELOPED

A background report is developed during Phase 3 and distributed to the stakeholders

The background report outlines the key objectives, guidelines & criteria, redistricting study process, stakeholders' roles, overview of expected mapping conventions, and current enrollment statistics relating to the redistricting study

A baseline set of options is then developed as starting point.

PHASE 4

OPTION ANALYSIS: IPT MEETINGS & PUBLIC INFO

The IPT will typically meet 1-2 times a month over a period of 2-3 months to discuss different redistricting concepts.

Two public information sessions will be held to provide the general public an opportunity to understand the redistricting study process, as well as to solicit feedback regarding draft options

The Superintendent will be sharing the final map with the Board Education.

Data Collection

Data availability and quality are central to this redistricting study. A comprehensive collection of data is compiled throughout the life of the study. Data collected includes:

- School District– Official enrollment counts by school by grade, along with enrollment databases by address. Data/feedback regarding transportation, school locations, facility information.
- City / County Sources– Base GIS data (address pts, municipalities, subdivisions, existing and planned developments, road networks, etc.)

Data collection efforts have been underway through the summer, and information will continue to be collected throughout the process if it is deemed useful.

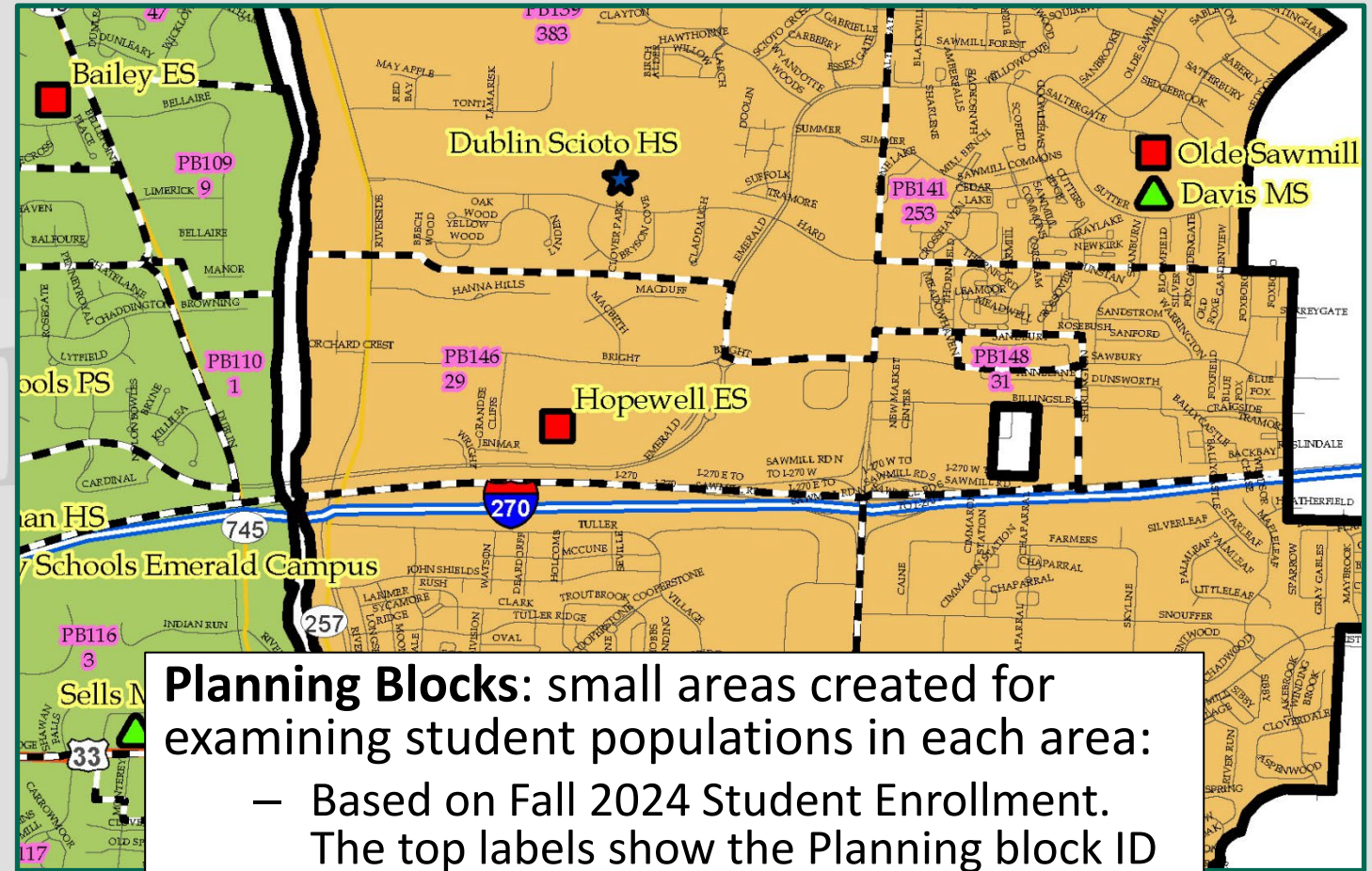
Phase 2

Data Assimilation

Cropper is tasked to develop several key pieces of information to help facilitate the redistricting process.

Once data is collected, it is necessary to integrate it into GIS to enable quick and efficient analysis and redistricting options development. This includes, but is not limited to, geographically mapping out:

- Attendance zones
- Student's home addresses
- Planning Blocks



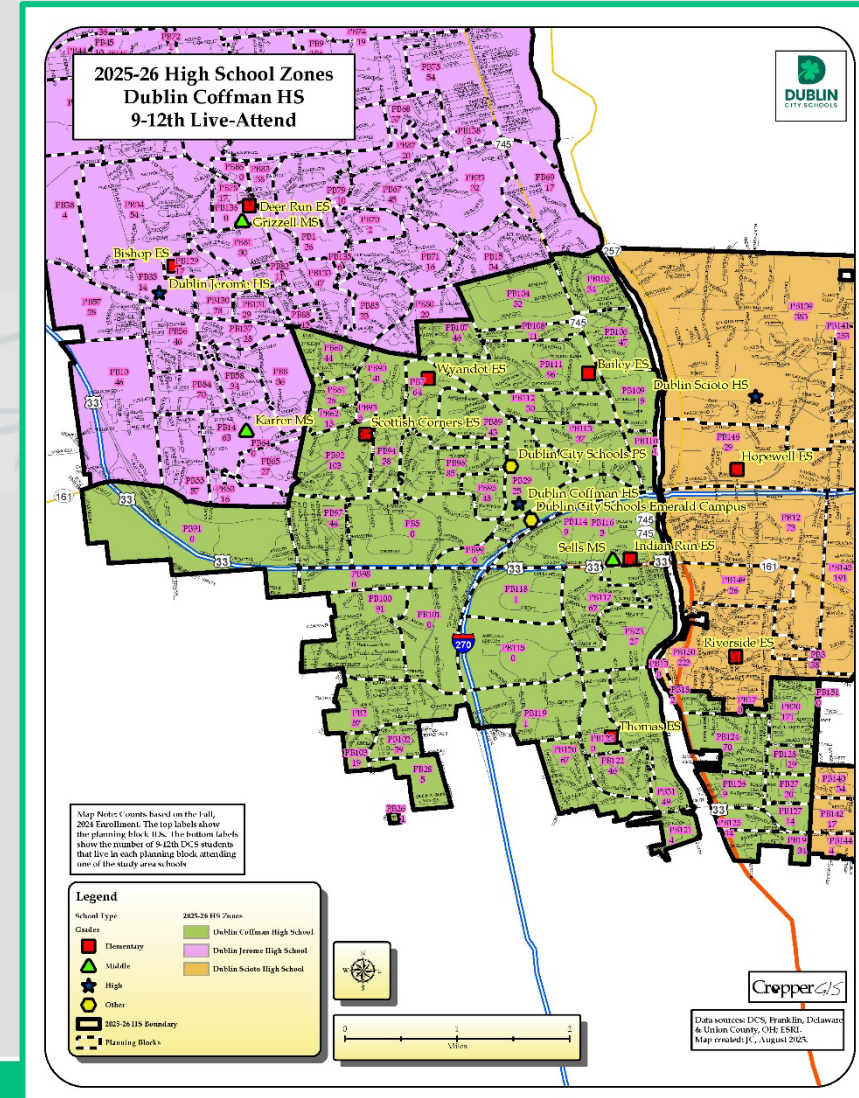
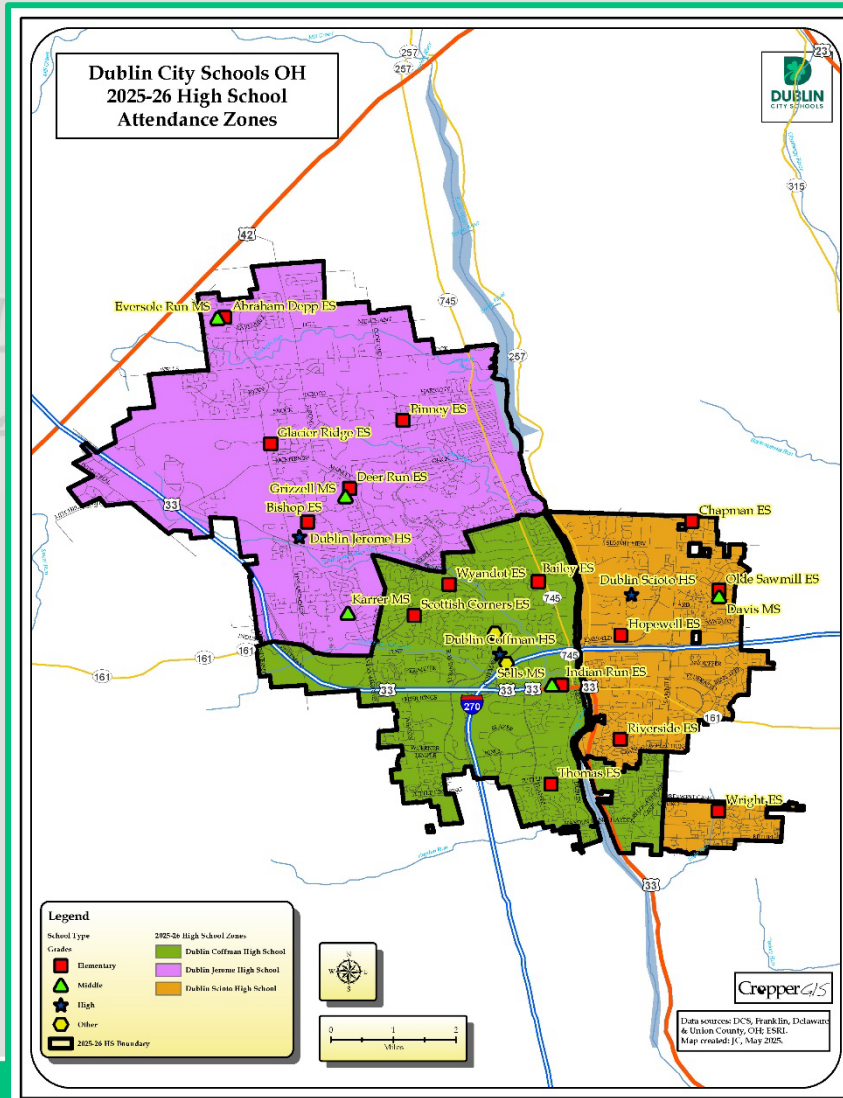
Planning Blocks: small areas created for examining student populations in each area:

- Based on Fall 2024 Student Enrollment. The top labels show the Planning block ID (PB #). The bottom labels show the number of 9-12 DCS students that live in a boundary school within the study area.

Phase 2

Redistricting Study Area

- Maps showing attendance zones for all High Schools are included in this study.



Phase 2

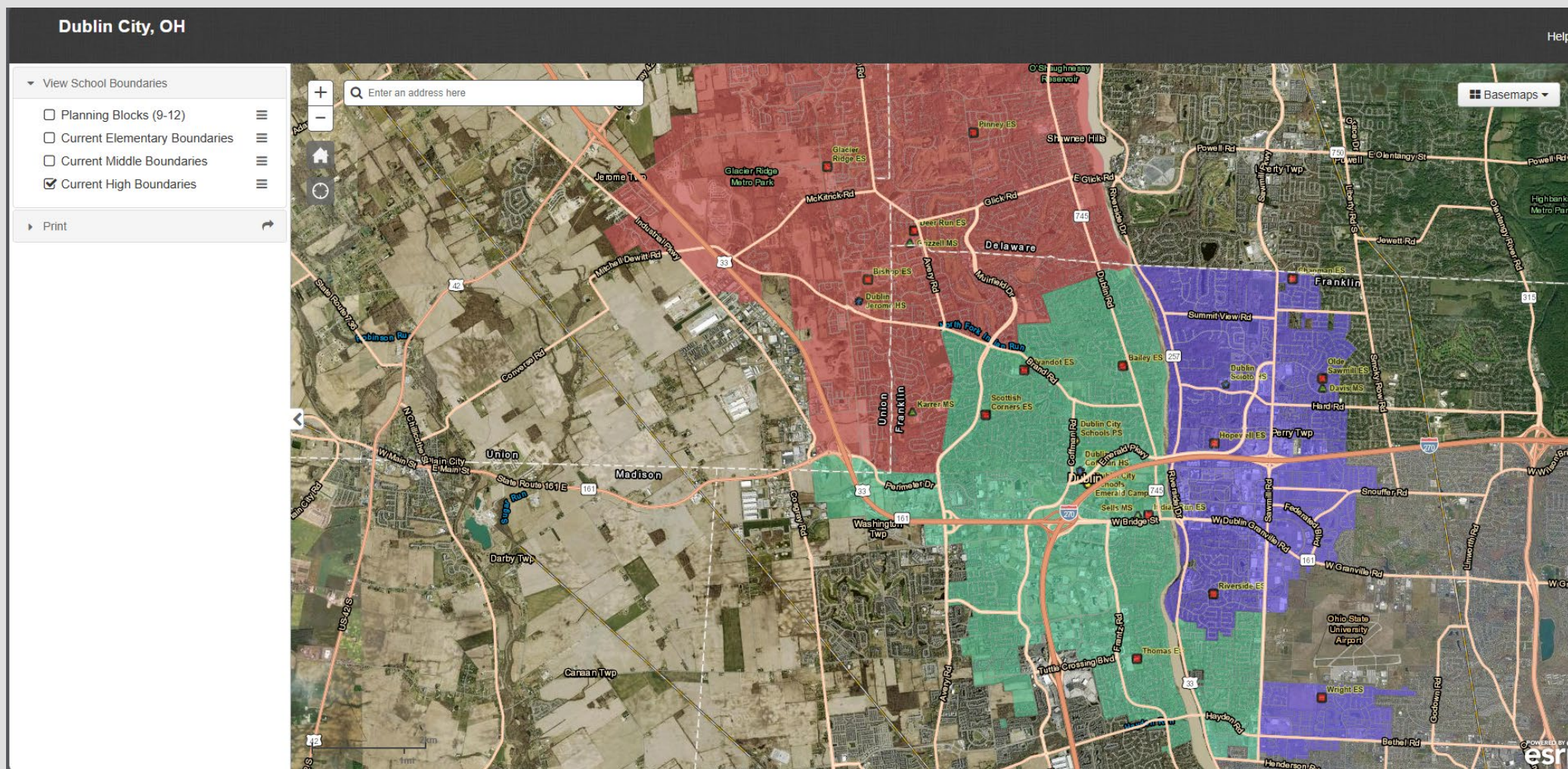
Interactive Webmap

- An online map has been developed to further inform all stakeholders on the work of the internal planning team.
- Current zones and options can be viewed on the map.
- Other features can be turned on/off on the map, including planning blocks.
- Map is customizable and can/will be updated during the process to show new options along with other information requested by the internal planning team.
- Site can be viewed on any device, including mobile devices and tablets (with internet connection).
- Site address is:

https://croppermap.com/dublincity_oh/

Phase 2

Interactive Webmap



Phase 3

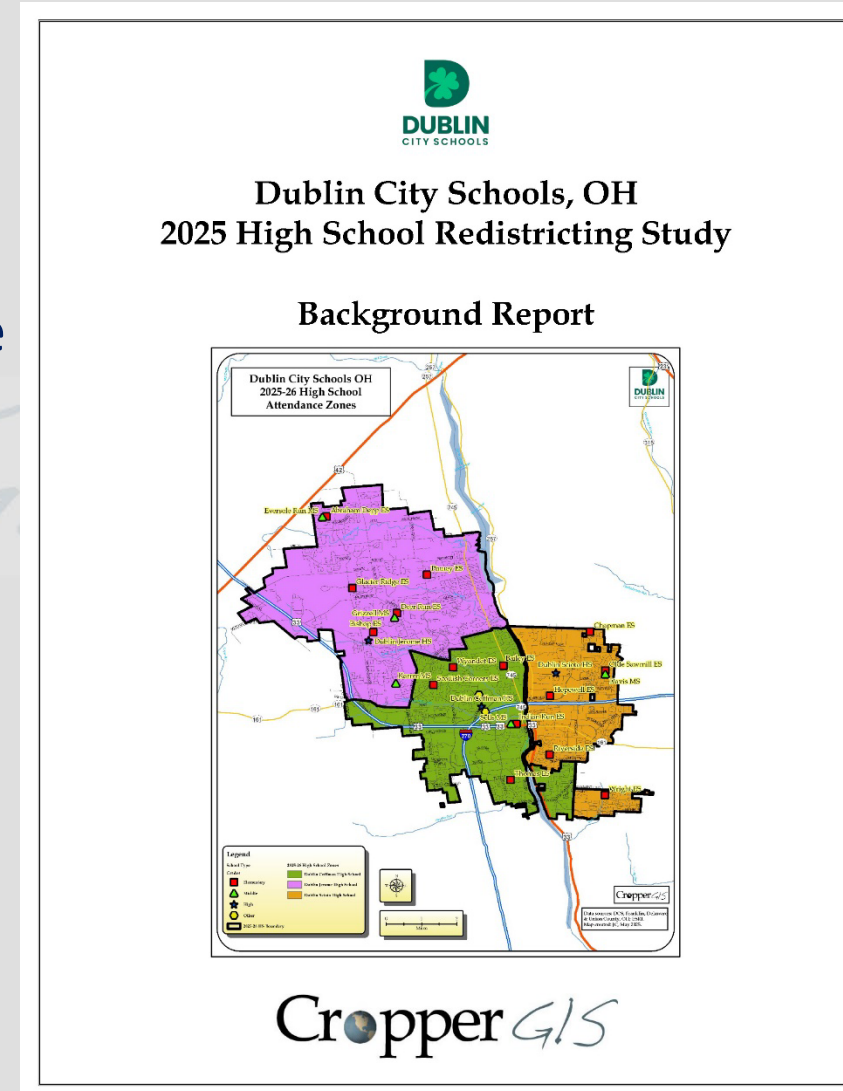
Background Report Development

The Background Report Purpose:

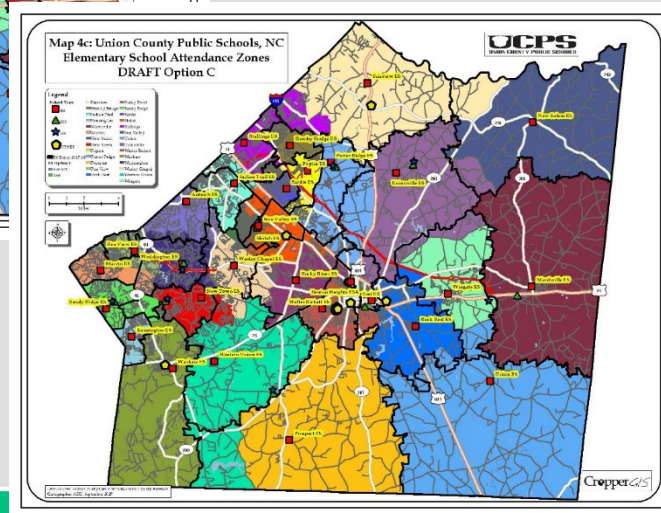
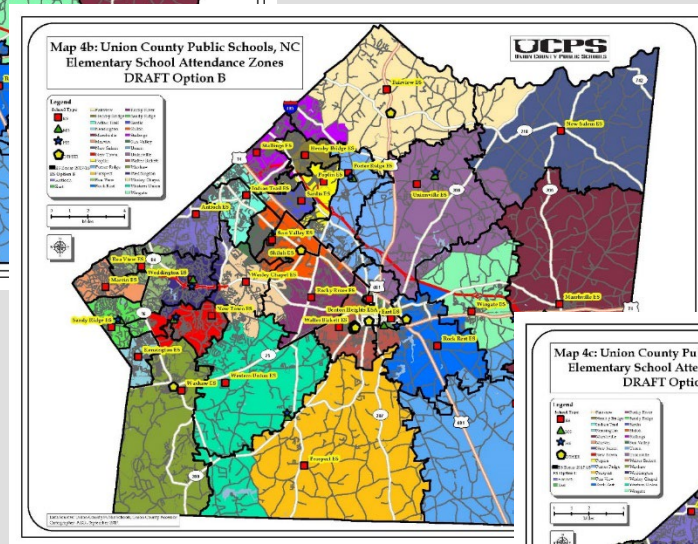
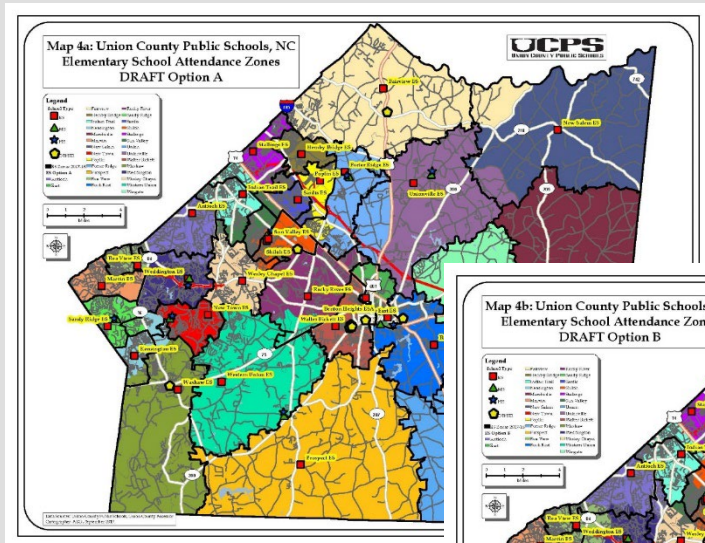
- To expand the knowledge of each stakeholder
- To help share a message that is consistent and accurate

Please be familiar with the entire report, and note some sections:

- Background and Key Objectives (p. 1)
- Redistricting Study Criteria (p. 1)
- Redistricting Study Process (p. 2)
- Study Timeline (p. 4)
- Live-Attend Maps (p. 7)
- Enrollment and Utilization Tables (p. 14)



Baseline Options Development



To expedite the process and empower the community, it is best to begin with a series of baseline redistricting options.

Baseline options will be shared with the internal planning team at a meeting in September.

Internal Planning Team and Public Engagement

The Internal Planning Team will meet 1-2 times per month from August 2025 through November 2025 to analyze data, review attendance zones, and discuss redistricting concepts.

At the second public information session on September 29th, 2025, the work of the team will be shared, and community members will have an opportunity to discuss the planning team's work with staff and planning team members.

Valuable information will also be gathered via a community survey that will take place after the information session.

The Superintendent will be sharing the final map with the Board Education.

Communication Logistics

Cropper GIS

Communication Logistics

Visit the Redistricting Study Web site at <https://dcsredistricting.com/>

Dublin City Schools - 2025 High School Redistricting

[Project Overview](#)

[Project Maps](#)

Project Overview

Recent / Useful Documents:

[General Feedback Form](#)

[Background Report](#)

[Dublin City Schools Website](#)

[Web Map](#)

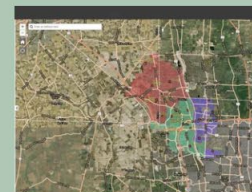
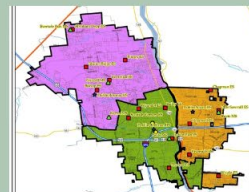
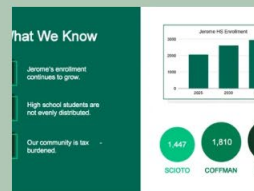
Background

Funded by the approval of the 2023 levy and bond issue, the Dublin City School District is initiating a redistricting study to proactively address key challenges, including rapid enrollment growth at Jerome High School, the uneven distribution of students across the district, and the need to maintain cost-effective operations across all facilities. This redistricting effort aims to balance enrollment among the district's three high schools, ensuring equitable access to educational resources and opportunities for all students.

The outcome of this study will inform a redistricting plan to be approved by the Superintendent, with implementation scheduled for the 2026–2027 school year. The Dublin City Schools redistricting study is guided by the following key objectives:

Project Objectives:

- Jerome High School's rapid enrollment growth.
- The uneven distribution of students across the district.



[Project Overview](#)

[Project Maps](#)

[Webmap](#)

[DCS Website](#)

Redistricting Study: Suggestions and Questions for 2025-26

Thank you for your interest in our redistricting process. This form is the best way for us to maintain and track input. Please state below any suggestions or questions you have and submit the form. Questions will be answered by email as soon as possible. Suggestions will not receive responses, but most common suggestions will be carefully reviewed. Please be thorough in completing this form so that we have all the information needed to consider your suggestions or answer your questions. All of the feedback provided will be shared with the Internal Planning Team (IPT).

General information and answers to Frequently Asked Questions can be found here: <https://www.dublincityschools.org/redistricting>. More information about the redistricting process, including copies of public materials and presentations, can be found here: <https://www.dcsredistricting.com/>.

If anything requires physical mailing, please send to:
Dublin City Schools
Attention: Redistricting
5775 General Parkway
Dublin, OH 43017

[General Feedback Form](#)

[Background Report](#)

Stay Informed – Provide Feedback

- Submit comments via the online [Dublin City Schools, OH - HS Redistricting Study 2025 General Feedback Form](#)
- Attend the Public Information Sessions on September 29, 2025
 - Locations:
 - 6:00pm @ Coffman HS (6780 Coffman Rd, Dublin, OH 43017)
 - 7:30pm @ Jerome High School (8300 Hyland Croy Road, Dublin, OH 43016)
 - Present DRAFT Redistricting Options to the General Public for Comment/Feedback.
- Participate in an Online Survey from September 29 – October 12, 2025

Next Steps

Aug.-Oct.
2025

- The IPT will typically meet 1-2 times a month over a period of 2-3 months to discuss different redistricting concepts.

September
29, 2025

- Public Information Sessions #2 will be held in person:
 - 6:00pm @ Coffman HS
 - 7:30pm @ Jerome High

November
10, 2025

- The Superintendent will be sharing the final map with the Board Education.

School Determination Process

Students will be assigned to the high school that serves their residential address beginning with the 2026–2027 school year.

- **Default Assignment:** Students will attend the high school assigned by the new boundaries, which will be announced on **November 10, 2025**. No action is needed if a student will attend the high school assigned to their residence.
- **Option to Remain If Impacted:** Students currently in grades **9–11** (Classes of 2027, 2028, and 2029) who are impacted by redistricting may choose to remain at their current home high school. Those who wish to remain at their current high school must complete the **School Determination Form** by **December 5, 2025**. More about this form will be shared later in the process.
- **No Option to Remain:** ALL students in **8th grade** (Class of 2030) and younger will attend the high school assigned to their residence. This includes siblings of current high school students who elect to remain at their current school.

FAQs Highlights

- Will neighborhoods be kept together?
- Concerns about proximity to current high school vs distance/traffic to other high schools
- How will social/emotional needs be supported during transitions?
- Balance of socioeconomic diversity across schools
- Why not build a fourth high school?

Answers to these and many other questions can be found on the district's [Redistricting FAQs](#) page.



Thank You!

DUBLIN
CITY SCHOOLS



Cropper G/S