



2025-26 Redistricting Study

Public Information Session 2
March 16, 2026

*Presented by: East Greenwich Public Schools
and Cropper GIS Consulting*

Welcome and Introductions

The Facilitator

Cropper GIS Consulting, LLC

- K-12 school planning is our business and our passion. Our specialty is facilitating redistricting studies.
- Cropper GIS works with K-12 school districts to:
 - Develop redistricting strategies
 - Facilitate community engagement
 - Perform demographic studies
 - Prepare long-range facility master plans
 - Conduct housing and pupil yield-factor studies

Matthew Cropper, Cropper GIS

- 25+ years experience providing GIS mapping and analysis services to school districts and other clients
- Facilitated boundary change study projects across the U.S.
- Published numerous times on topics related to K-12 facility and redistricting processes

Tonight's Purpose

- **Learn** how the redistricting study has been working.
- **Review DRAFT** boundary options for the Elementary schools in the district and speak directly with Internal Planning Team (IPT) members.
- **Complete** online survey related to the options to provide valuable input to the IPT.

Redistricting Study

Cropper GIS Consulting was hired by East Greenwich Public Schools to facilitate and manage the project. Our firm is tasked to:

- A. **Develop** supporting materials to help facilitate the study.
- B. **Implement** an expert-based process of developing a student redistricting plan.
- C. **Empower** the community throughout the process.
- D. **Leverage** expertise to develop logical, efficient, and effective student redistricting options with the planning team.
- E. **Recommend** necessary student assignment changes to the School Committee.

Stakeholders

Outline of Stakeholder Responsibilities	
Consultant	<ul style="list-style-type: none"> <input type="checkbox"/> Schedule and facilitate Internal Planning Team meetings. <input type="checkbox"/> Communicate updates with planning team, including updated handout and meeting schedule logistics. <input type="checkbox"/> Conduct public meetings to solicit feedback related to draft options that are under consideration. <input type="checkbox"/> Support the district in providing materials such as presentations, handouts, and online interactive maps for the public's consumption. <input type="checkbox"/> Coordinate and summarize online feedback received from general public and internal planning team.
Internal Planning Team	<ul style="list-style-type: none"> <input type="checkbox"/> Consists of key EGPS administrators including central office, senior leadership, department staff personnel, planning, and East Greenwich community members. <input type="checkbox"/> Group will work to review draft options that are being developed in preparation to share with the School Committee and public. <input type="checkbox"/> Review input provided from the consultant and general public regarding draft options and continue to modify maps with a focus on the best solution for all students as a whole. <input type="checkbox"/> Recommend a redistricting plan to the School Committee.
General Public	<ul style="list-style-type: none"> <input type="checkbox"/> Informed through website. <input type="checkbox"/> Invited to submit comments and input throughout the entire process. <input type="checkbox"/> Invited to participate in public information sessions and to provide input via surveys and online general feedback form.
School Committee	<ul style="list-style-type: none"> <input type="checkbox"/> Charge internal planning team with its responsibilities. <input type="checkbox"/> Identify questions the IPT is expected to answer. <input type="checkbox"/> Advise staff and the process regarding policy-related considerations and other committee-level decisions. <input type="checkbox"/> Vote on a redistricting plan.

Timeline

Process & Timeline for Redistricting

	Oct. 2025	Nov. 2025	Dec. 2025	Jan. 2026	Feb. 2026	March 2026	Apr. 2026	May 2026
<i>Data Collection</i>								
<i>Data Analysis / Assimilation</i>								
<i>Demographic Study Development</i>								
<i>Baseline Options Development</i>								
<i>Planning Team Work (1-2 meetings per month)</i>								
Public Information Session #1 : Present Project Process, Criteria, Timeline, and Redistricting Objectives to Community. Web-based meeting.				1/20				
Public Information Session #2: Present DRAFT Redistricting Options to General Public for Comment/Feedback. On-site meeting to review options and q/a at end of session. Public invited to complete survey to provide feedback on options.						3/16		
<i>Presentation of Final Recommendations to the School Committee</i>							4/28	
<i>School Committee Votes on Redistricting Plan</i>								5/19

Project Objectives

The district is interested in a process to evaluate and modify attendance boundaries to account for the district's facilities plan, which is to build 2 new elementary schools for grades 1-5 on the Hanaford and Frenchtown Elementary School sites.

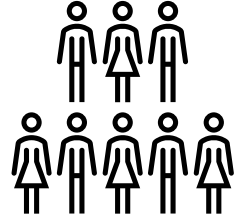
Frenchtown Elementary will be a larger building and will have the capacity for 5 classes per grade level when the new school is completed. Hanaford Elementary will have capacity for 4 classes per grade level.

Eldredge Elementary School will close and Meadowbrook Elementary School will serve grades Pre-Kindergarten through Kindergarten. The anticipated implementation year for the boundaries is Fall 2027.

Redistricting Criteria



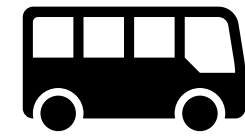
- Balance school facility utilization – Make every effort to have equitable utilization (where possible) across the district and in accordance with school capacities. Make efficient use of available space.



- Consider economic, cultural, and ethnic diversity – Ensure schools are inclusionary and not adversely affected by enrollment decisions.



- Close Proximity – Students should be assigned to the school within the closest proximity to their homes where possible. As well as avoiding creating zones that are not connected to primary attendance zone



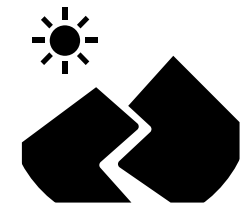
- Maximize busing efficiencies in transportation of students – Make every effort to account for transportation (school bus and car rider), parent commuting patterns, balance busing travel time, and costs.



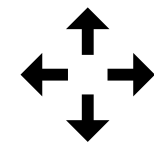
- Make every effort to establish contiguous zones – Avoid creating zones that are not connected to the primary attendance zone, where possible.



- Account for future economic growth to allow for increasing attendance in high growth areas.



- Use major roads and natural boundaries wherever feasible to define attendance zones – Minimize the number of students who need to cross major intersections and other barriers to maximize the safety and security of students.

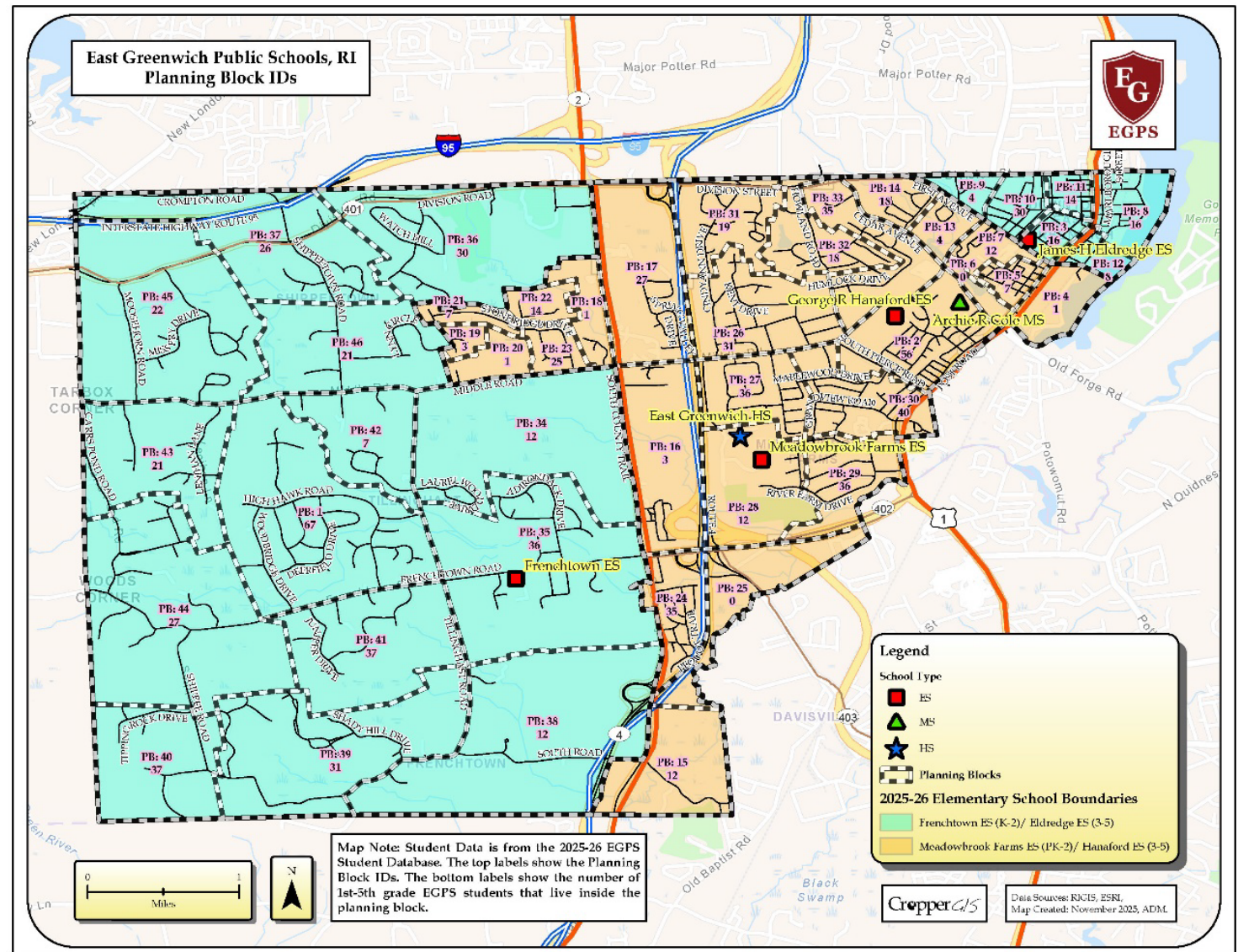


- Minimize impact on students -Attempt to minimize the number of students impacted when making boundary adjustments Impact on specialized school programs or a change to school capacity.

Interpreting Maps

Planning Blocks: small areas for examining student populations:

- Map titles and notes clarify what each planning block map represents.
- Labels within planning blocks represent one of the following:
 - Based on 2025-26 Student Enrollment. The top labels show the Planning block ID (PB #). The bottom labels show the number of 1st-5th EGPS students that live inside the planning block.



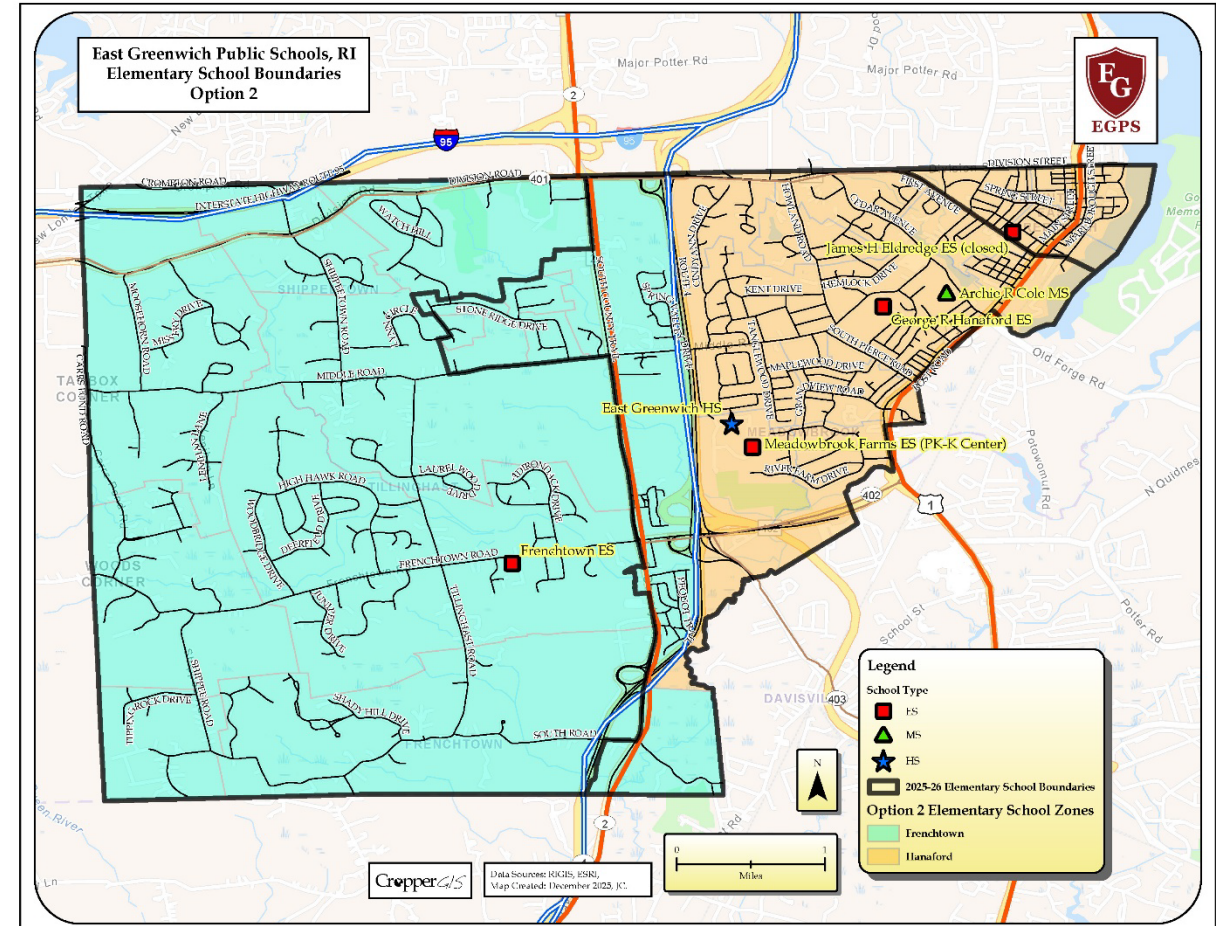
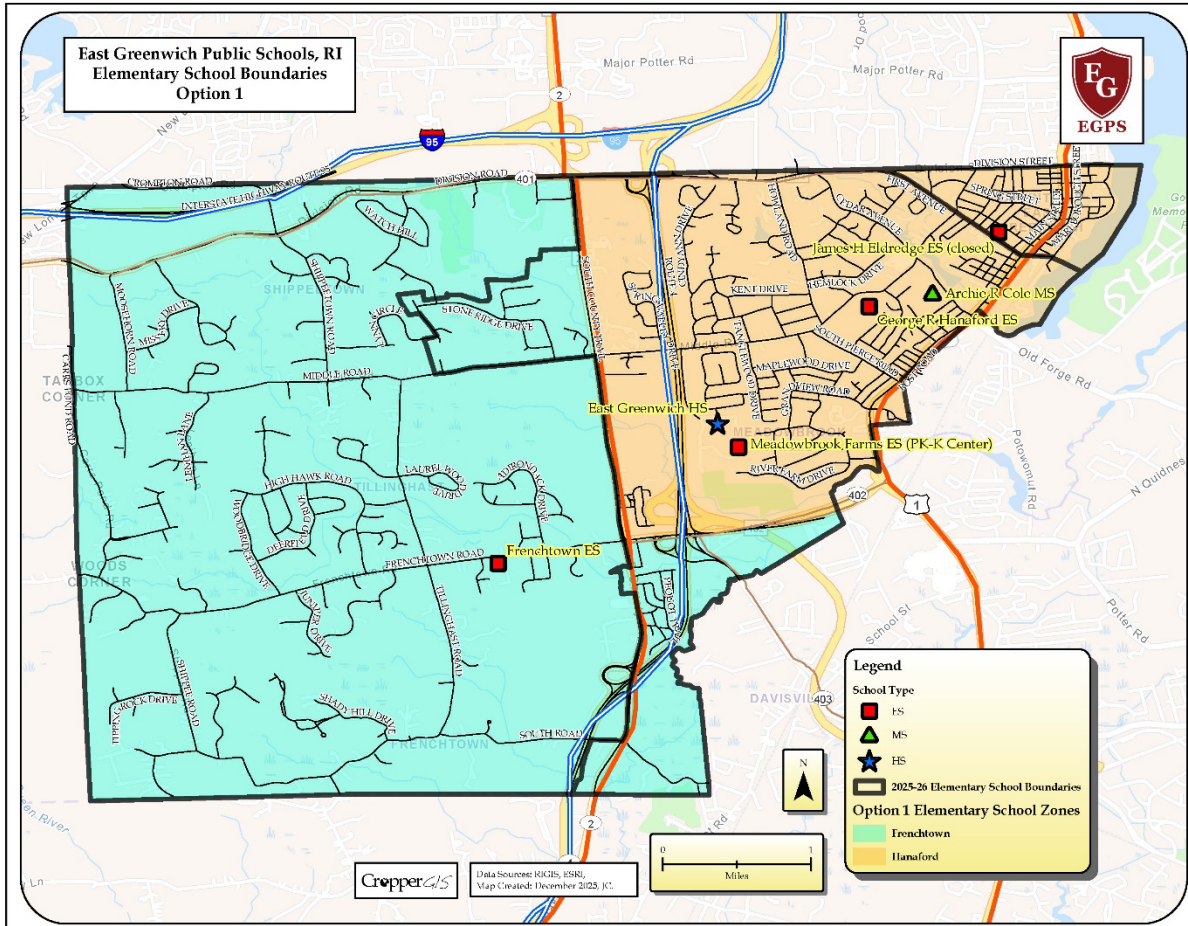
Work done to date

- Data and information examined includes school enrollment (grade level, attending school and counts in neighborhoods, demographics), school capacity, zoning maps, & forecasted trends.
- Meetings with staff and IPT members to review relevant data and draft options for consideration.
- Options are considered DRAFT throughout the process; continued dialog and consideration of data is always encouraged.

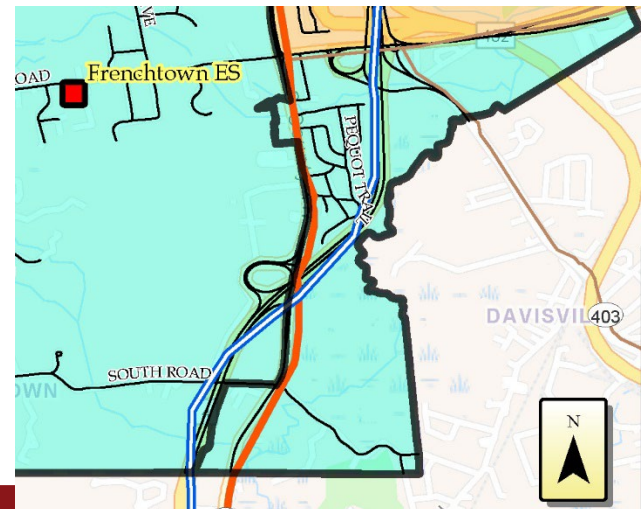
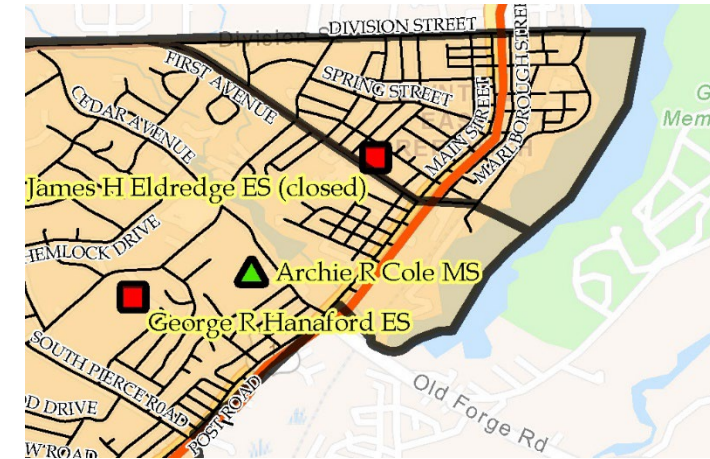
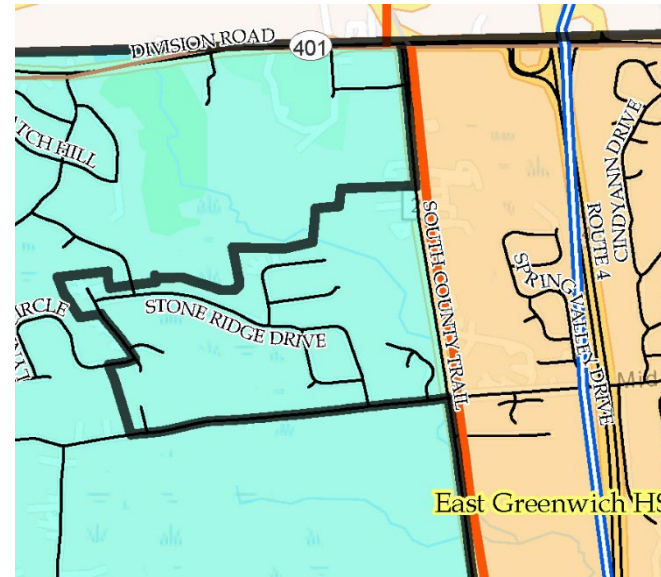
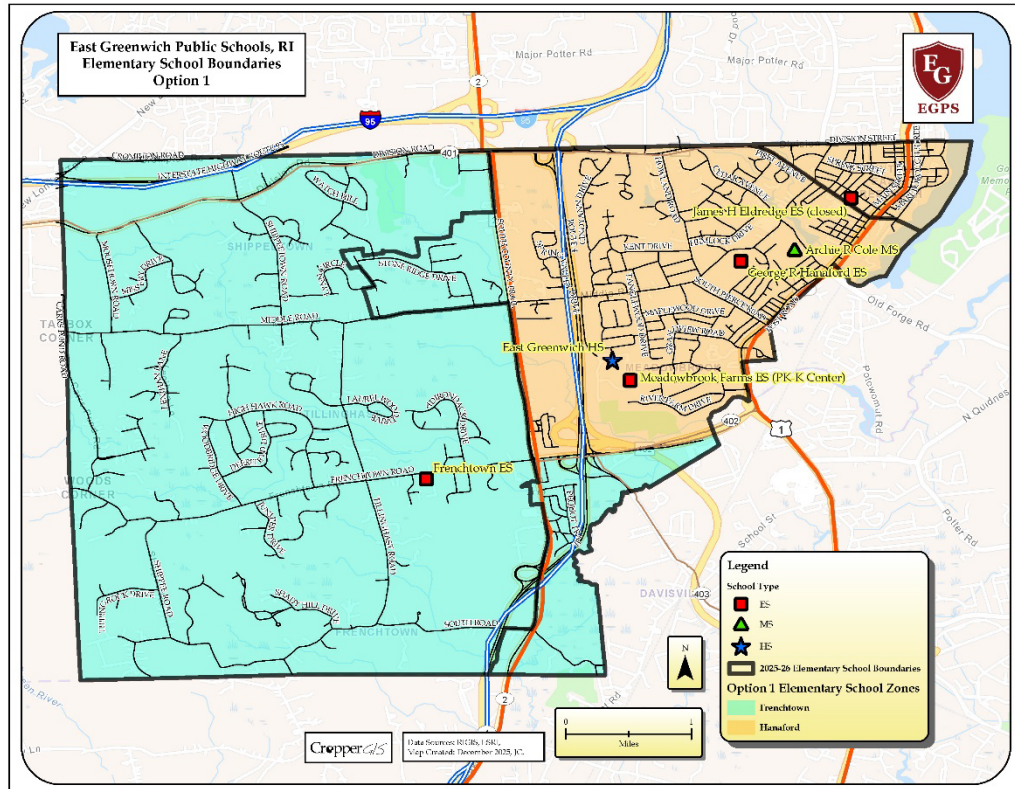
Work done to date

- IPT's charge is to recommend one option to present to the School Committee.
- Nothing will be FINAL until the School Committee votes on a plan.

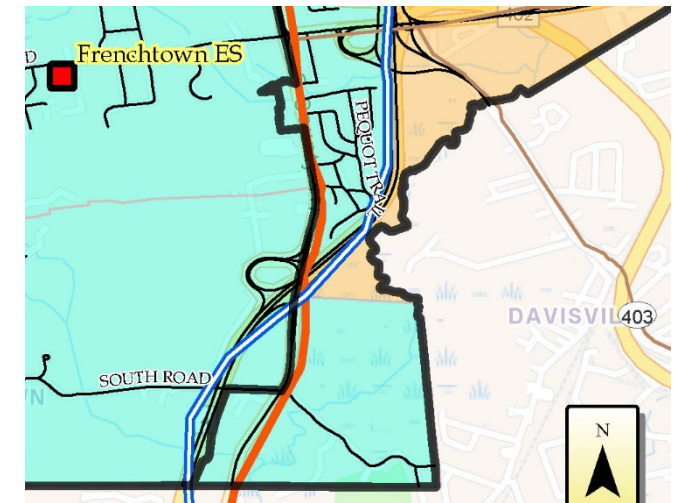
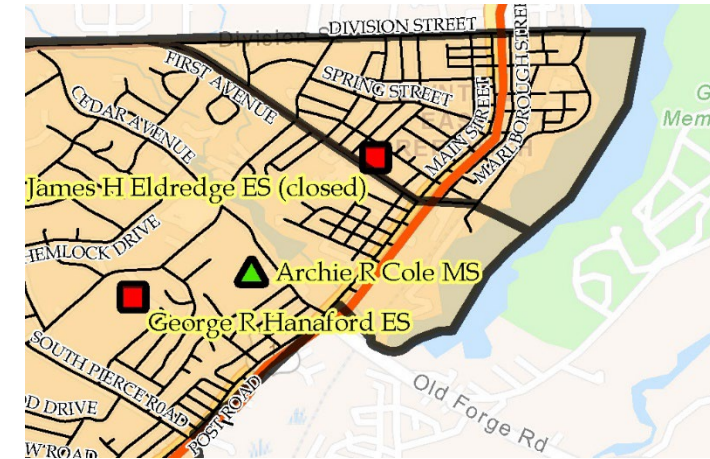
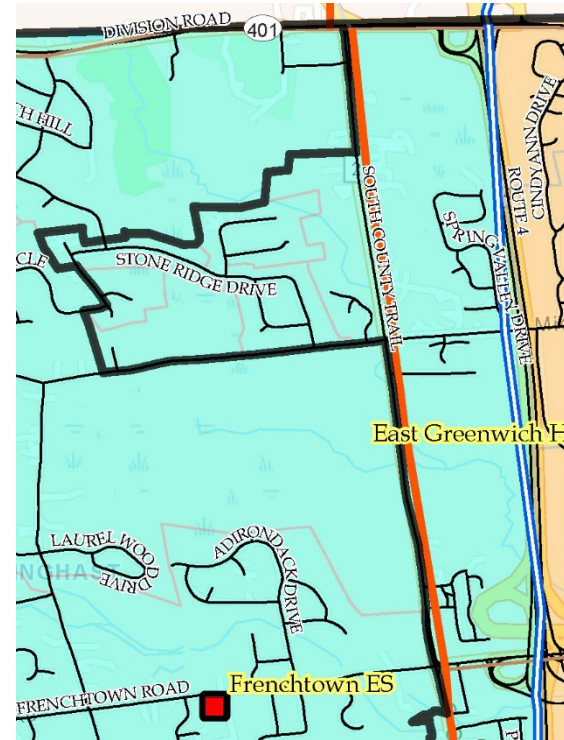
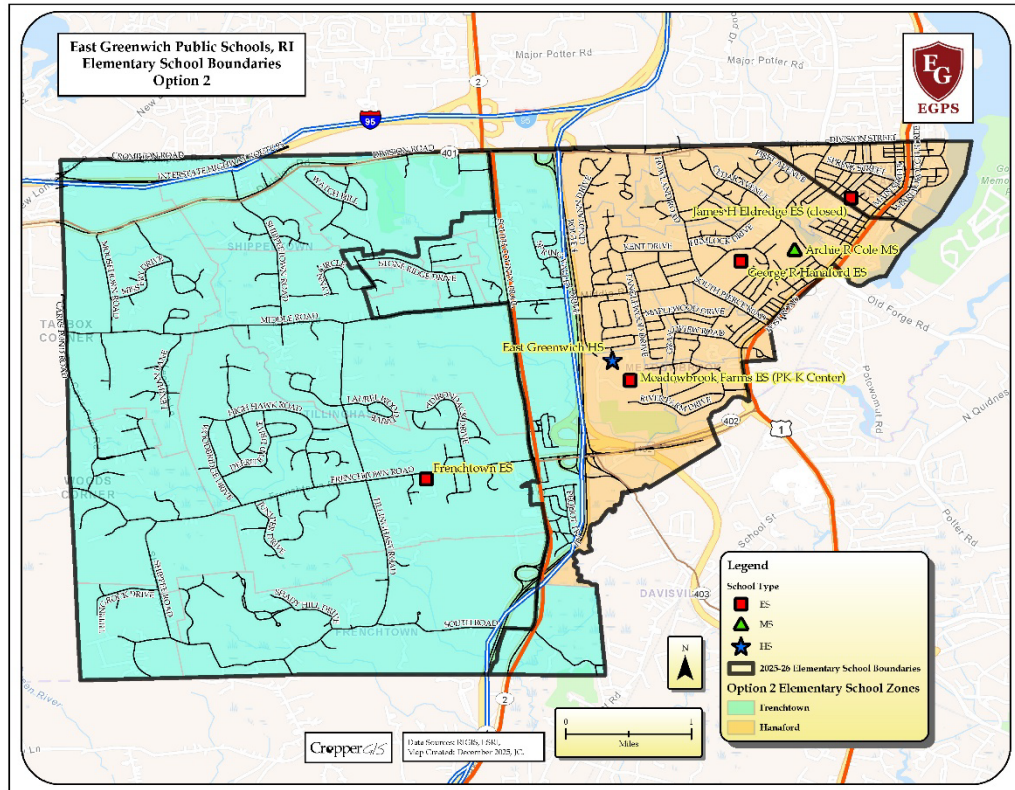
Options Presented Tonight



DRAFT Option 1 ES Zones



DRAFT Option 2 ES Zones



Interpreting Tables

- Statistics that are pertinent to the study are made available to accompany the large maps.
- The data shown is the data the IPT uses to evaluate options.

Interpreting Tables

Enrollment and Utilization – Official October 2025 Enrollment

School	Capacity	2025-26 Enrollment	2025-26 Utilization	
		Total Enrollment	+ / -	%
Frenchtown Elementary School	243	262	-19	107.8%
James H Eldredge Elementary School	200	309	-109	154.5%
Meadowbrook Farms Elementary School	231	249	-18	107.8%
George R Hanaford Elementary School	172	301	-129	175.0%
	846	1,121	-275	132.5%

Interpreting Tables

Estimated Enrollment, Over/Under Capacity, & Utilization Tables

School	25-26 Capacity	27-28 Capacity	25-26 Enrollment	Estimated Utilization		ES Option 1 Estimated Enrollment	Estimated Utilization		ES Option 2 Estimated Enrollment	Estimated Utilization	
				+/-	%		+/-	%		+/-	%
Frenchtown Elementary School	243	615	262	-19	107.8%	484	131	78.7%	514	101	83.6%
George R Hanaford Elementary School	172	492	301	-129	175.0%	443	49	90.0%	413	79	83.9%
Meadowbrook Farms Elementary School	231	PK-K	249	-18	107.8%						
James H Eldredge Elementary School	200	Closed	309	-109	154.5%						
	846	1,107	1121	-275	132.5%	927	180	83.7%	927	180	83.7%

Interpreting Tables

Impact Tables

Student Impact Estimates	
Scenario	Estimated 2027 1st-5th Students Impacted
Option 1	213
Option 2	216

2025-26 Elementary Boundaries	Option 1 Elementary Boundaries	Estimated 2027 1st-5th Students
Frenchtown/ Eldredge	Frenchtown	449
Frenchtown/ Eldredge	Hanaford	102
Meadowbrook/ Hanaford	Frenchtown	111
Meadowbrook/ Hanaford	Hanaford	418

DRAFT Option 1 shown as sample. All tables included in handout.

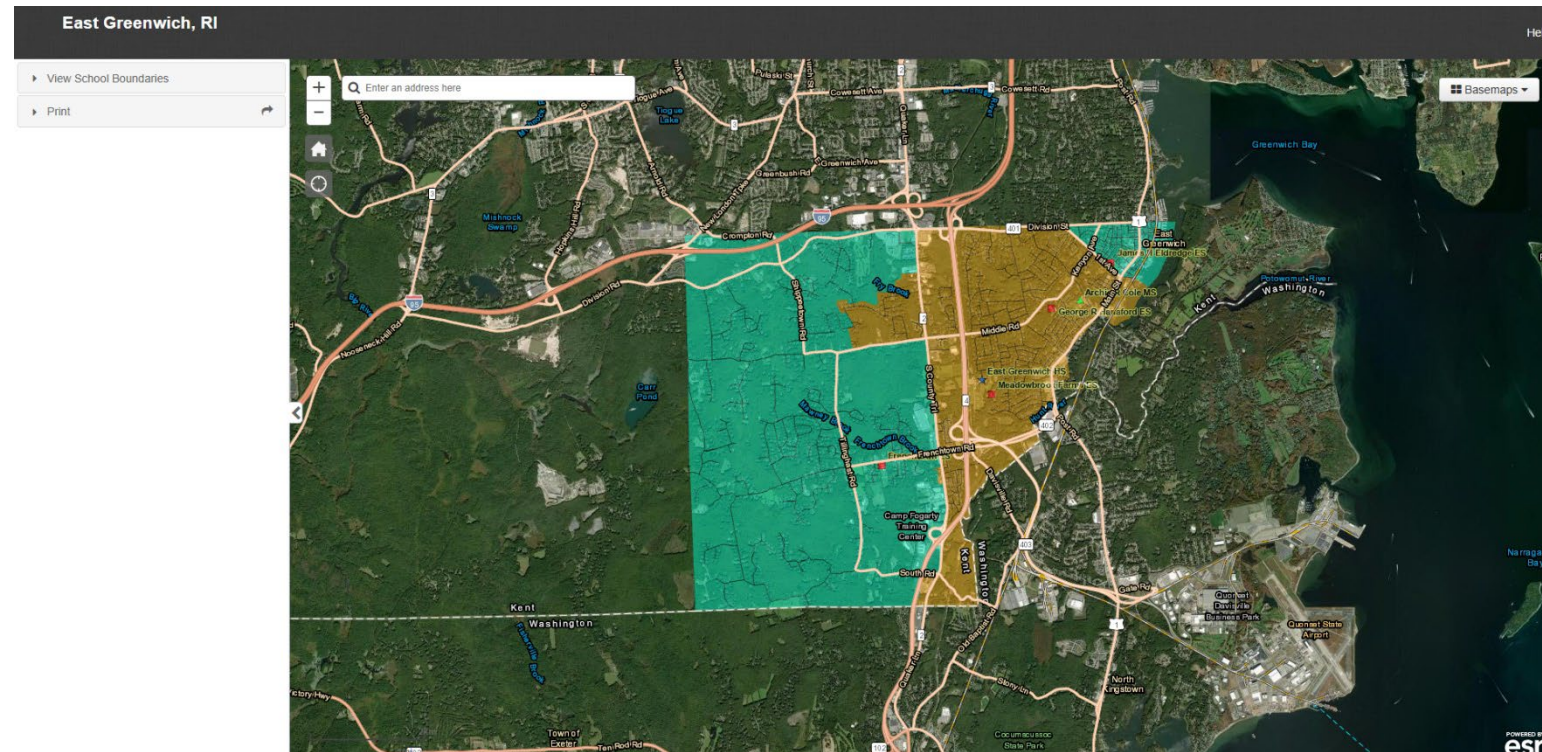
Key: **Green** represents 1-5th grade “Live In” students who live in the boundary and are not impacted by the option.

Tan represents the number of 1-5th grade “Live In” students who live in the boundary and are impacted by the option.

Review of DRAFT Options

- 8.5"x11" maps, as well as plots of maps are available for review
- Option maps are also now on interactive Webmap
- Copies of the handouts, including small and large format maps are posted on the Redistricting Study Website:

<https://egpsredistricting.com/>



- *Detailed Review of Maps*– the end of the presentation will include a Q&A to answer any questions about the DRAFT Options and related data with members of the public.
- IPT members, EGPS Staff, and consultant will be available after the presentation to answer questions the public may have
- Although answering any questions the night of the meeting is very important, please submit your feedback via the comment form on the Redistricting study website and/or via the online survey for the entire IPT's benefit

Stay Informed – Provide Feedback

- Visit the Redistricting Study Web site at <https://egpsredistricting.com/>
- Participate in an Online Survey from Mar. 16 – Mar. 29, 2026
 - Link is located on <https://egpsredistricting.com/> or you can go directly [HERE](#)
 - You can also access the survey by referencing the QR code on this slide.
 - Available to translate to multiple languages.
 - Survey can be taken on any PC/Apple/mobile device with Internet access
- Although the formatted survey is preferred, you can also submit comments via the online [East Greenwich Redistricting General Feedback Form](#)
- Presentation of a Recommendation to the School Committee is scheduled on April 28th, 2026.
- School Committee votes on a redistricting plan on May 19, 2026





Thank You for your time and
participation!