



Huber Heights City Schools, OH 2024 Redistricting Study

-Public Advisory Committee Meeting 1-

May 20, 2024

CropperGIS



Welcome and Introductions



Who We Are



Cropper GIS Consulting

K-12 school planning is our business and our passion. Our specialty is school realignment.

Cropper works with K-12 school districts to:

- develop redistricting plans,
- facilitate community engagement,
- research, map and write demographic studies,
- prepare long-range facility master plans,
- author site feasibility studies,
- conduct & publish housing impact and yield factor studies, and
- provide GIS implementation & training.

Cropper GIS is an ESRI Authorized Business Partner



ESRI
Technology
AUTHORIZED
BUSINESS PARTNER



Recent Projects:

- Cincinnati Public Schools, OH
- Columbus Public Schools, OH
- Groveport Madison Schools, OH
- Westerville City Schools, OH
- Worthington Schools, OH
- Dublin City Schools, OH
- Akron Public Schools, OH
- Northwest Local School District, OH
- Monroe Local Schools, OH
- Washington County Schools, IN
- Vigo County Schools, IN
- MSD Washington Township, IN





Matthew Cropper

- More than 20 years experience providing GIS mapping and analysis services to school districts and other clients.
- Manages and Facilitates K-12 redistricting and facility planning projects across the U.S.
- Expert consultant for U.S. Department of Justice, Civil Rights Division
- Published numerous papers about using GIS in master planning and educational planning.



Project Objectives

7

With the support of the Board of Education, Huber Heights City Schools is undertaking a redistricting study to address imbalances in school utilization and enrollment, and to pro-actively align with future facility plans. Huber Heights City Schools has begun a redistricting study to meet the following key objectives:

Primary Objective: Evaluate elementary attendance boundaries to ensure that the district is maintaining equity in school enrollment size and demographics.

Secondary Objectives: Evaluate the configuration of schools within the district to determine if there are potentially changes to grade configuration and/or school uses to ensure schools are operating efficiently.

Why We're Here



Cropper GIS Consulting was hired by Huber Heights City Schools to facilitate and manage the project. Our firm is tasked to:

- A. Develop supporting materials to help facilitate the study.
- B. Facilitate an expert-based process of developing a student redistricting plan.
- C. Empower the community throughout the process.
- D. Leverage expertise to develop logical, efficient, and effective student redistricting options with the planning team.
- E. Recommend a redistricting plan to the School Board.



Cropper GIS has developed a body of criteria to guide this student redistricting study. The following criteria are not listed in any particular order of importance:

- **Balance school facility utilization**

Make every effort to have equitable utilization (where possible) across the district and in accordance with school capacities and funded allotment ratios in accordance with state law. Make efficient use of available space.

- **Account for future growth**

Allow for increasing attendance in high growth areas.

- **Close Proximity**

Students should be assigned to the school within the closest proximity to their homes where possible.



Redistricting Criteria

10

Rules to Follow

- **Maximize busing efficiencies in transportation of students**

Make every effort to account for transportation (school bus and car rider), parent commuting patterns, balance busing travel time, and costs.



- **Minimize impact on students**

Attempt to minimize the number of students impacted when making boundary adjustments.

- **Account for economic, cultural, and ethnic diversity**

Ensure schools are inclusionary and not adversely affected by redistricting decisions.



- **Make every effort to establish contiguous zones**

Avoid creating zones that are not connected to the primary attendance zone, where possible

- **Use major roads and natural boundaries wherever feasible to define attendance zones**

Minimize the number of students who need to cross major roads and other barriers to maximize the safety and security of students and optimize transportation efficiency by containing bus routes within natural boundaries wherever possible to avoid traffic delays and late arrivals.

All criteria are in no particular order or priority, and the best plan is one that touches on all criteria but does not focus solely on one element of the criteria.



Stakeholders



Outline of Stakeholder Responsibilities	
Consultant	<ul style="list-style-type: none"> • Schedule and facilitate internal planning team meetings and public advisory committee meetings. • Communicate updates with planning team, including updated handout and meeting schedule logistics. • Conduct public meetings to solicit feedback related to draft options that are under consideration. • Support the district in providing materials such as presentations, handouts, and online interactive maps for the public's consumption. • Coordinate and summarize online feedback received from general public, internal planning team, and public advisory committee.
Internal Planning Team	<ul style="list-style-type: none"> • Consists of key school district administrators including central office, transportation, planning, and school principals. • Group will work to review draft options that are being developed in preparation to share with the School Board and public. • Review input provided from the consultant, general public, and public advisory committee regarding draft options and continue to modify maps with a focus on the best solution for all students as a whole. • Share a redistricting plan with the School Board
Public Advisory Committee	<ul style="list-style-type: none"> • Made up of public officials and business leaders in the Huber Heights area. • Reviews work of the internal planning team and provides direct feedback based on local knowledge of the district and the region. • Helps the consultant and the internal planning team to prepare for the second public information session, where draft options will be presented to the public. • Will review public feedback after both public information sessions. • Members are charged with representing the Huber Heights community as a whole, not individual school zones or neighborhoods.
General Public	<ul style="list-style-type: none"> • Informed through website. • Invited to submit comments and input throughout the entire process. • Invited to participate in public information sessions (both virtual and in-person), and to provide input via surveys and online general feedback form.
School Board	<ul style="list-style-type: none"> • Charge internal planning team with its responsibilities. • Identify questions the planning team is expected to answer. • Advise staff and the process regarding policy related considerations and other board-level decisions.



Timeline



Process & Timeline for Redistricting

	March 2024	April 2024	May 2024	June 2024	July 2024	August 2024	September 2024	October 2024	November 2024	December 2024
<i>Data Collection</i>										
<i>Data Analysis / Assimilation</i>										
<i>Redistricting Baseline Options Development</i>										
<i>Internal Planning Team Work (1-2 meetings per month)</i>										
<i>Public Information Session #1 : Present Project Process, Criteria, Timeline, and Redistricting Objectives to Community. Information meeting to public. No Options shared at this point.</i>		4/22								
<i>Public Advisory Committee Meeting 1 - Review Background Data, Objectives, and Fall Planning Logistics</i>			5/20							
<i>Public Advisory Committee Meeting 2 - Review DRAFT Options</i>							9/23			
<i>Public Information Session #2: Present DRAFT Redistricting Options to General Public for Comment/Feedback</i>								10/24		
<i>Public Advisory Committee Meeting 3 - Review Survey Feedback/Results, Final considerations regarding DRAFT Options</i>									11/18	
<i>Presentation of Redistricting Plan to the Board of Education</i>										12/12



Project Approach



Four Project Phases

17

Cropper has identified four phases of a community-driven redistricting study for HHCS:

1. Data Collection
2. Data Analysis / Assimilation
3. Options Development
4. Internal Planning Team and Public Advisory Committee

Project Approach



Phase 1. Data Collection (March 2024)

Data availability and quality are central to this redistricting study. Fortunately, Huber Heights City Schools, and Montgomery County GIS will provide a comprehensive collection of data, including:



- School District- Official enrollment counts by school by grade, along with enrollment databases by address. Data/feedback regarding transportation, school locations, facility information. March 2024 enrollment data is the basis for this study.
- City / County Sources- Base GIS data (address pts, municipalities, subdivisions, existing and planned road networks, etc.)



Data collection efforts have been underway through the Spring, and information will continue to be collected throughout the process if it is deemed useful.

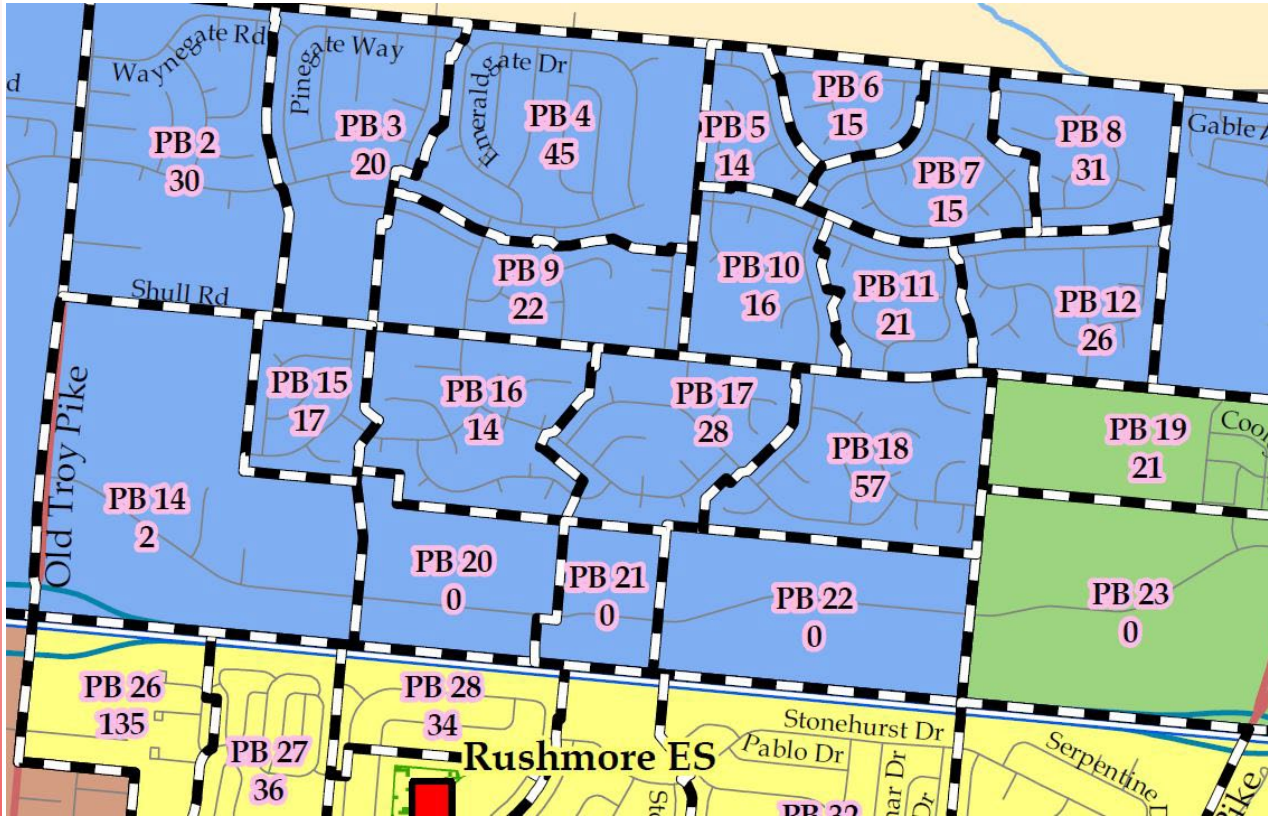


Phase 2. Data Analysis & Assimilation (March - April 2024) ¹⁹

- Cropper is tasked to develop several key pieces of information to help facilitate the redistricting process.
- Once data is collected, it is necessary to integrate it into GIS to enable quick and efficient analysis and redistricting options development.



Phase 2. Data Analysis & Assimilation (March - April 2024) ²⁰



The use of planning blocks will be created to help the IPT and public obtain an understanding of the impact on moving an area one way or the other.

Key data will be analyzed by these planning blocks, such as total number of students living within each block.

**Huber Heights City Schools
Charles Huber Elementary
2023-24 Live Attend Analysis**



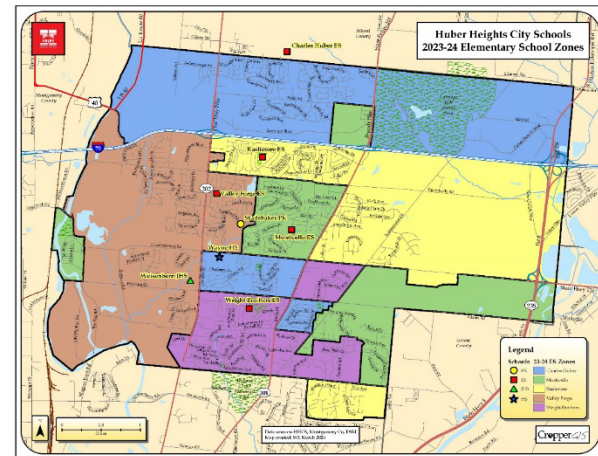
2. Data Analysis / Assimilation: Background Report

- Background Report Purpose:
 - To expand the knowledge of each IPT member
 - To help IPT members share a message that is consistent and accurate



Huber Heights City Schools, OH 2024 Redistricting Study

Background Report



CropperGIS



2. Data Analysis / Assimilation: Background Report

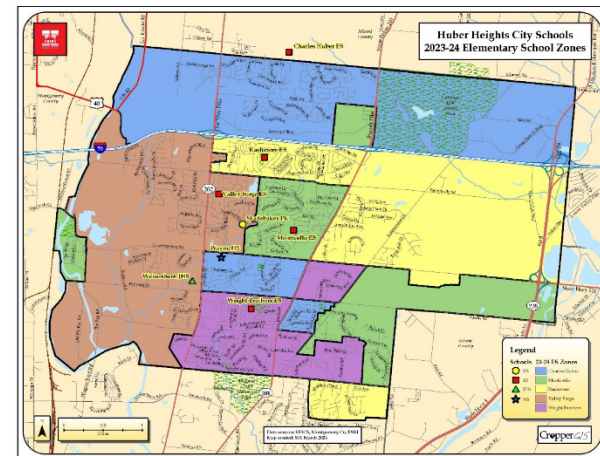
Please be familiar with the entire report, and note some key sections:

- Key Objectives (p.1)
- Redistricting Criteria (p.1)
- Stakeholder Roles and Responsibilities (p.3)
- Timeline (p.4)
- Live-Attend Analysis (Appendix A)
- Maps (Appendix B)
- Enrollment and Utilization Tables (Appendix C)



Huber Heights City Schools, OH 2024 Redistricting Study

Background Report



CropperGIS



Online Map

- An online map has been developed to further inform all stakeholders on the work of the internal planning team.
- Current zones and options can be viewed on the map.
- Other features can be turned on/off on the map, including planning blocks.
- Map is customizable, and can/will be updated during the process to show new options along with other information requested by the internal planning team.
- Site can be viewed on any device, including mobile devices and tablets (with internet connection).
- Site address is:
 - https://croppermap.com/huberheights_oh/



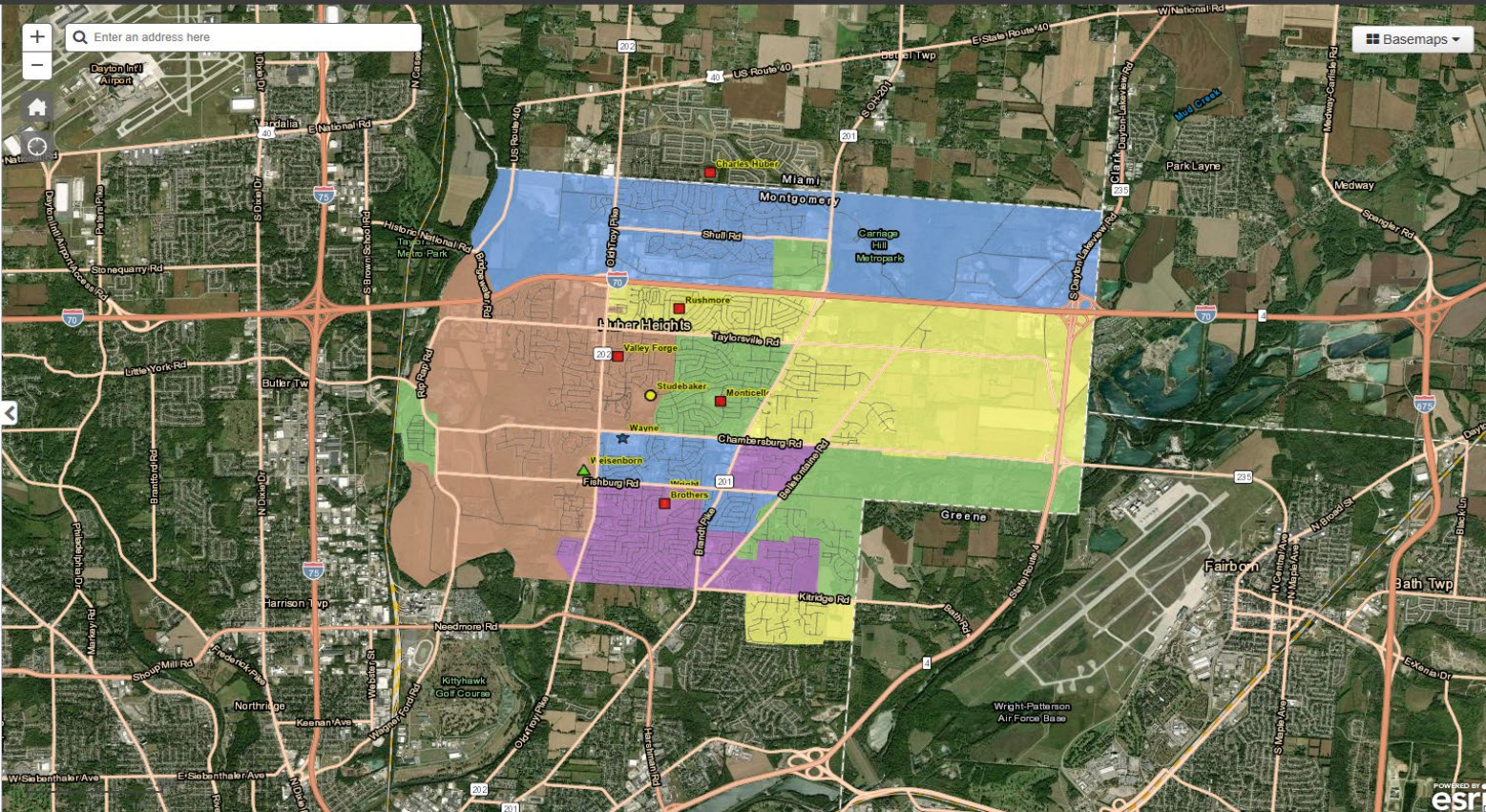
2. Data Analysis / Assimilation

Online Map

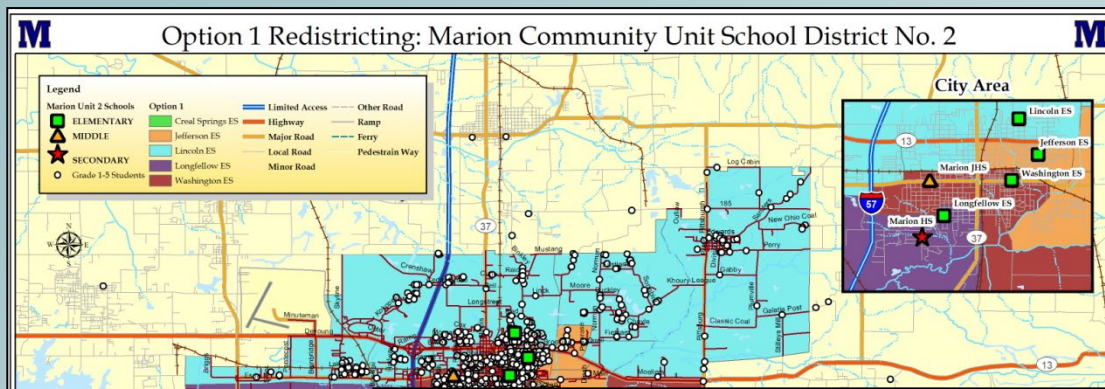
Huber Heights City Schools

Help

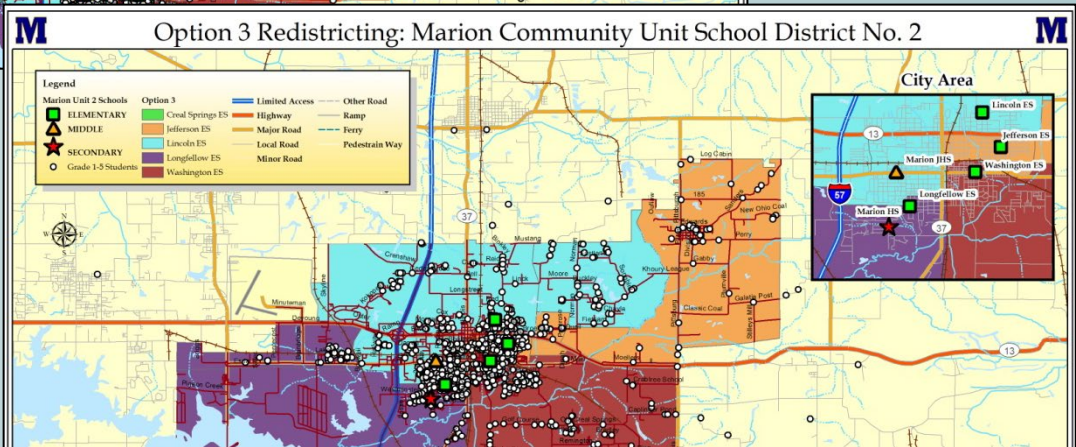
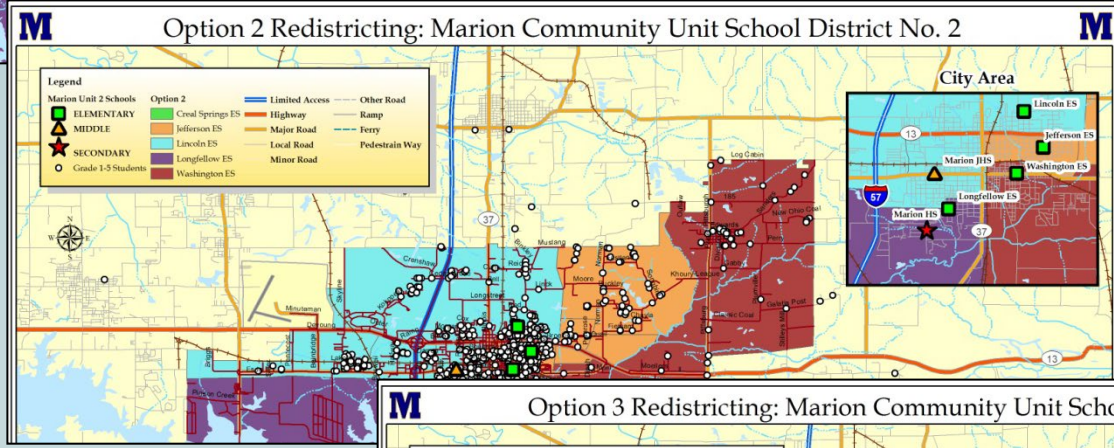
- ▶ View School Boundaries
- ▶ Zoom To School Boundaries
- ▶ Print



POWERED BY
esri

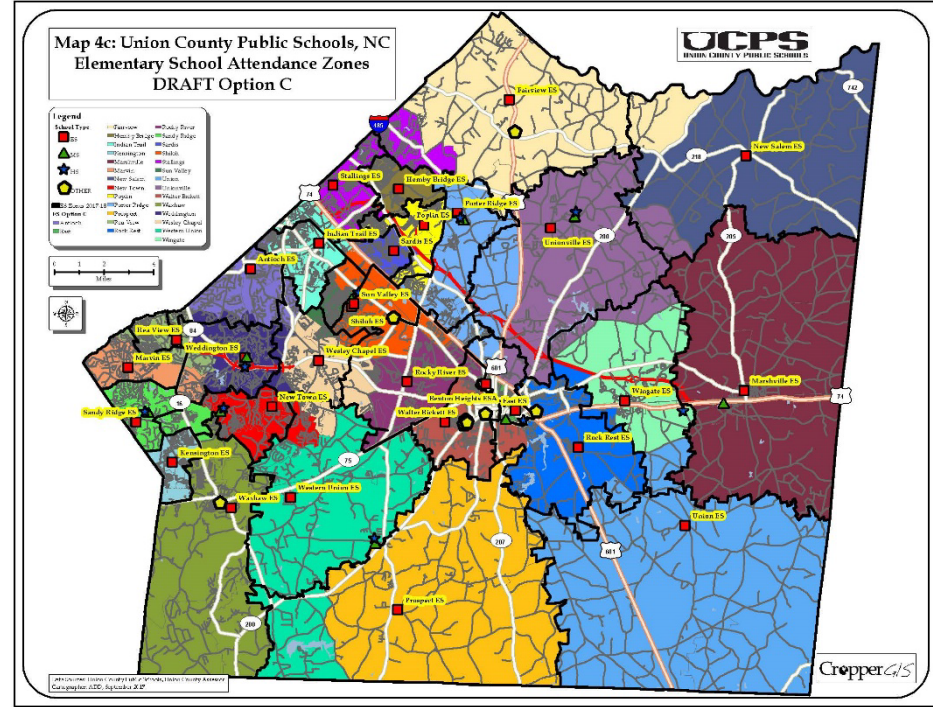
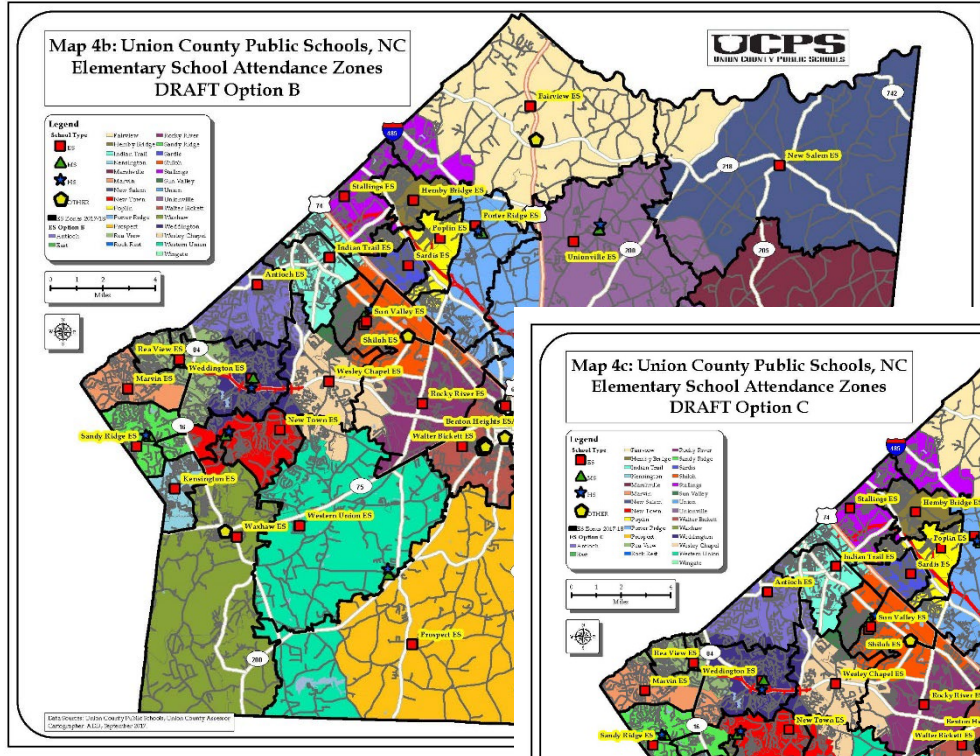
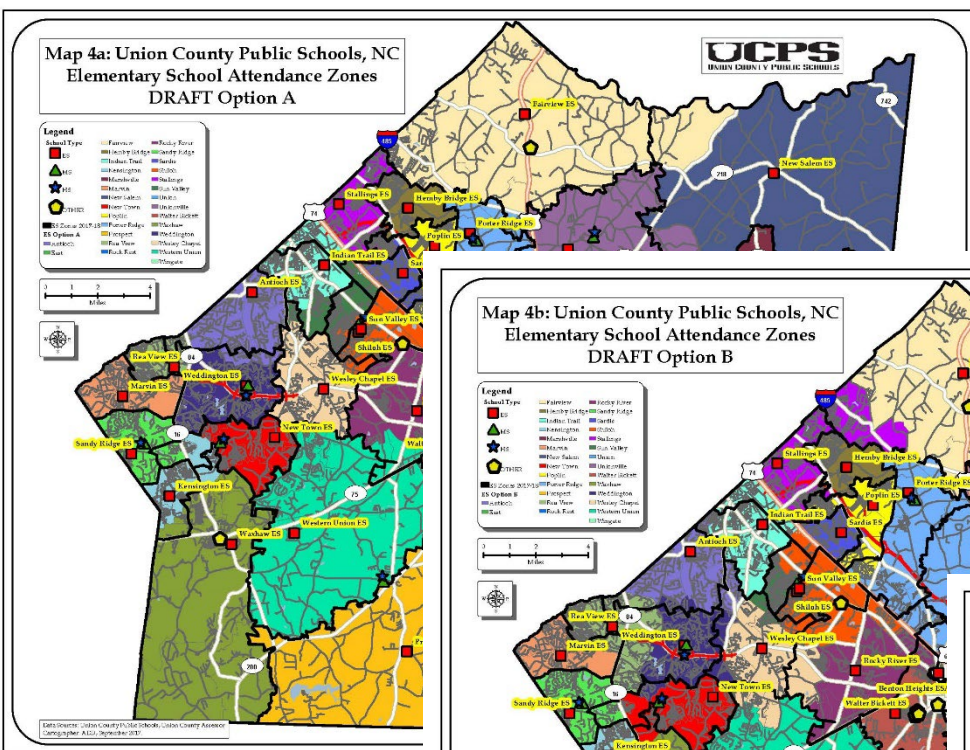


To expedite the process and empower the community, it is best to begin with a series of baseline realignment options.



Baseline options will be shared with the internal planning team at their 2nd meeting.

To expedite the process and empower the community, the best approach is to begin with a series of baseline realignment options. These options will be developed with the HHCS redistricting criteria in mind.



- Once the options are presented the IPT may:
- A. Use or disregard baseline options.
 - B. Improve upon the baseline options.
 - C. Develop new options from scratch.



Phase 4. Internal Planning Team and Public Advisory Committee (April 2024 - December 2024)

27

The most important factor when working on a redistricting study is to keep all lines of communication open.

Project Approach





Phase 4. Internal Planning Team and Public Advisory Committee (April 2024 - December 2024)

The internal planning team will meet regularly from April 2024 through December 2024 to analyze data, review attendance zones, and develop zone options.

The public advisory committee, made up of community members, will meet three times from May 2024 to November 2024 to review and discuss the work of the internal planning team.

At public information sessions in April and October 2024, the work of the team will be shared, and community members will have an opportunity to discuss planning team work with staff and planning team members. Valuable information will also be gathered via a community survey that will take place after the October public information session.

School Board action is expected to take place in December 2024.



Communication Logistics



- HHCS redistricting process website!
 - Helps to refer inquiring community to this website to answer questions about the student redistricting process, schedule and a quantity of data and maps.
 - <https://www.hhcsredistricting.com/>
 - An [online feedback form](#) is on this page where any member of the public can provide ongoing input.
 - Materials for Public Advisory Committee meetings and the October Public Information Session will be posted on the website.



Cropper GIS Contact Info:

Matthew Cropper

info@croppergis.com

614.451.1242

Huber Heights City Schools Contact:

Jason Enix

superintendent@myhhcs.org

937.237.6300 Ext. 8

Please remember to use the online comment form for general comments and questions.



Questions?



Small Group Exercises



- The committee will break into 4 or 5 small groups.
- Each person will be given 3 stickers.
- After discussing the criteria, each member will place a sticker on the 3 criteria they think are most important.
- The results will be discussed with the full committee.

Haker Heights City Schools, OH
2020 Redistricting/Reale Public Advisory Committee Meeting 1

Criteria Exercise
May 26, 2024



<p><u>Balance school facility utilization</u></p> <p>Make every effort to have equitable utilization (where possible) across the district and in accordance with school capacities and funded allotment ratios in accordance with state law. Make efficient use of available space.</p>	<p><u>Minimize impact on students</u></p> <p>Attempt to minimize the number of students impacted when making boundary adjustments.</p>
<p><u>Account for future growth</u></p> <p>Allow for increasing attendance in high growth areas.</p>	<p><u>Account for economic, cultural, and ethnic diversity</u></p> <p>Ensure schools are inclusionary and not adversely affected by redistricting decisions.</p>
<p><u>Close proximity</u></p> <p>Students should be assigned to the school within closest proximity to their homes where possible.</p>	<p><u>Make every effort to establish contiguous zones</u></p> <p>Avoid creating zones that are not connected to the primary attendance zone, where possible.</p>
<p><u>Maximize busing efficiencies in transportation of students</u></p> <p>Make every effort to account for transportation (school bus and car rider), parent commuting patterns, balance busing travel times, and cost.</p>	<p><u>Use major roads and natural boundaries wherever possible to define attendance zones</u></p> <p>Minimize the number of students who need to cross major roads and other barriers to maximize the safety and security of students and optimize transportation efficiency by containing bus routes within natural boundaries wherever possible to avoid traffic delays and late arrivals.</p>



Planning Block Map Exercise

Small Group Exercises

- The committee will break into 4 or 5 small groups.
- Each group will be given a large (44x34 in) plot map of the district with labeled planning blocks and some markers.
- Each group will discuss the planning blocks and make notes, based on local knowledge, by directly marking the maps.
- The results will be discussed with the full committee.

