

Northwest Local School District, OH Colerain Elementary School 2022-23 Live-Attend Analysis



Colerain ES	
Total Enrollment (K-5)	586
Out of District	4
Unmatched	1
Total Live-In (K-5)	579
Live and Attend In	528
Live Out, Attend In	57
Live In, Attend Out	51

Legend

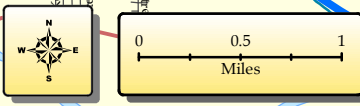
Schools

- ES
- ▲ MS
- ★ HS
- ELC
- Planning Blocks

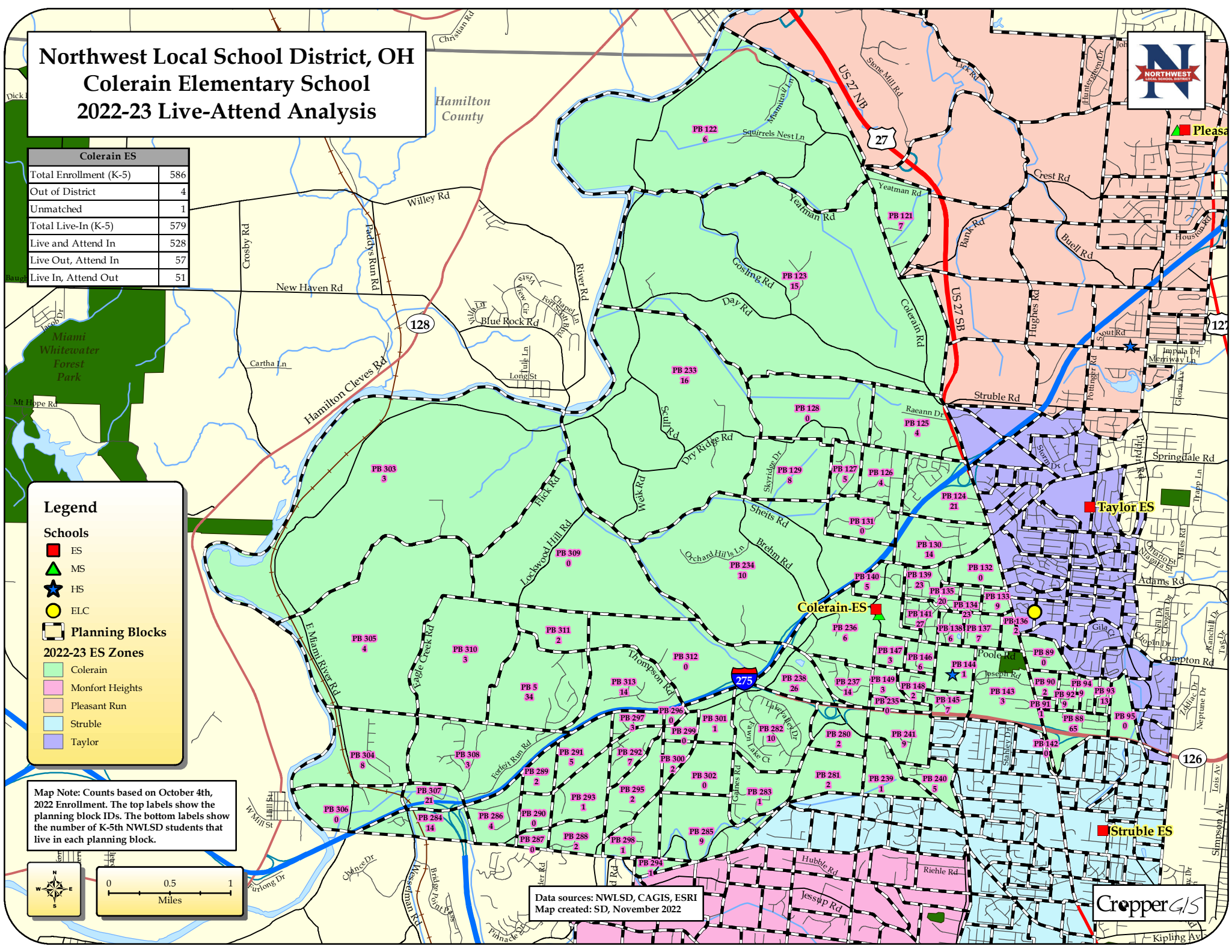
2022-23 ES Zones

- Colerain
- Monfort Heights
- Pleasant Run
- Struble
- Taylor

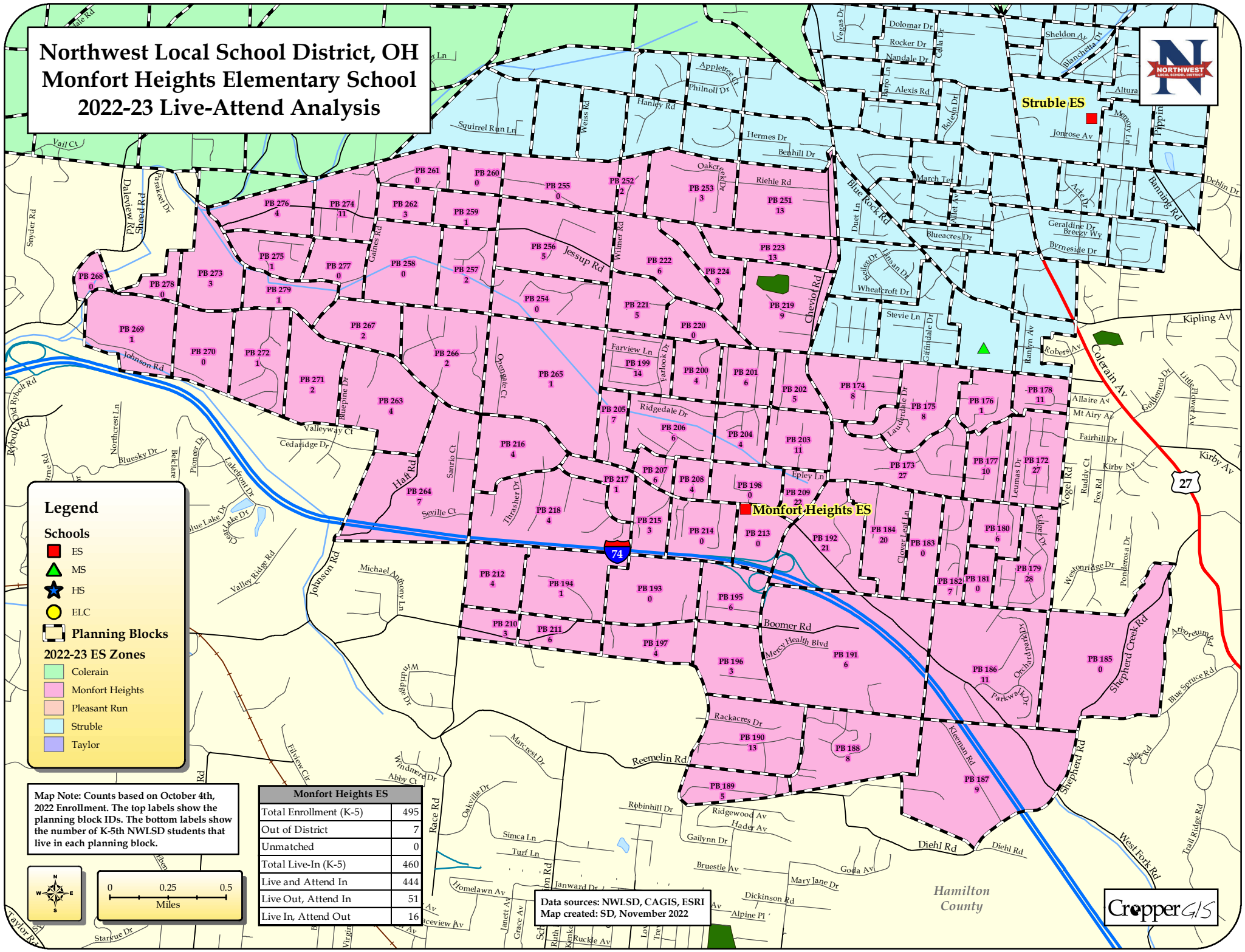
Map Note: Counts based on October 4th, 2022 Enrollment. The top labels show the planning block IDs. The bottom labels show the number of K-5th NWLSD students that live in each planning block.



Data sources: NWLSD, CAGIS, ESRI
Map created: SD, November 2022



Northwest Local School District, OH Monfort Heights Elementary School 2022-23 Live-Attend Analysis



Legend

- Schools**
- ES
 - ▲ MS
 - ★ HS
 - ELC
- Planning Blocks**
-

2022-23 ES Zones

- Colerain
- Monfort Heights
- Pleasant Run
- Struble
- Taylor

Map Note: Counts based on October 4th, 2022 Enrollment. The top labels show the planning block IDs. The bottom labels show the number of K-5th NWLSD students that live in each planning block.

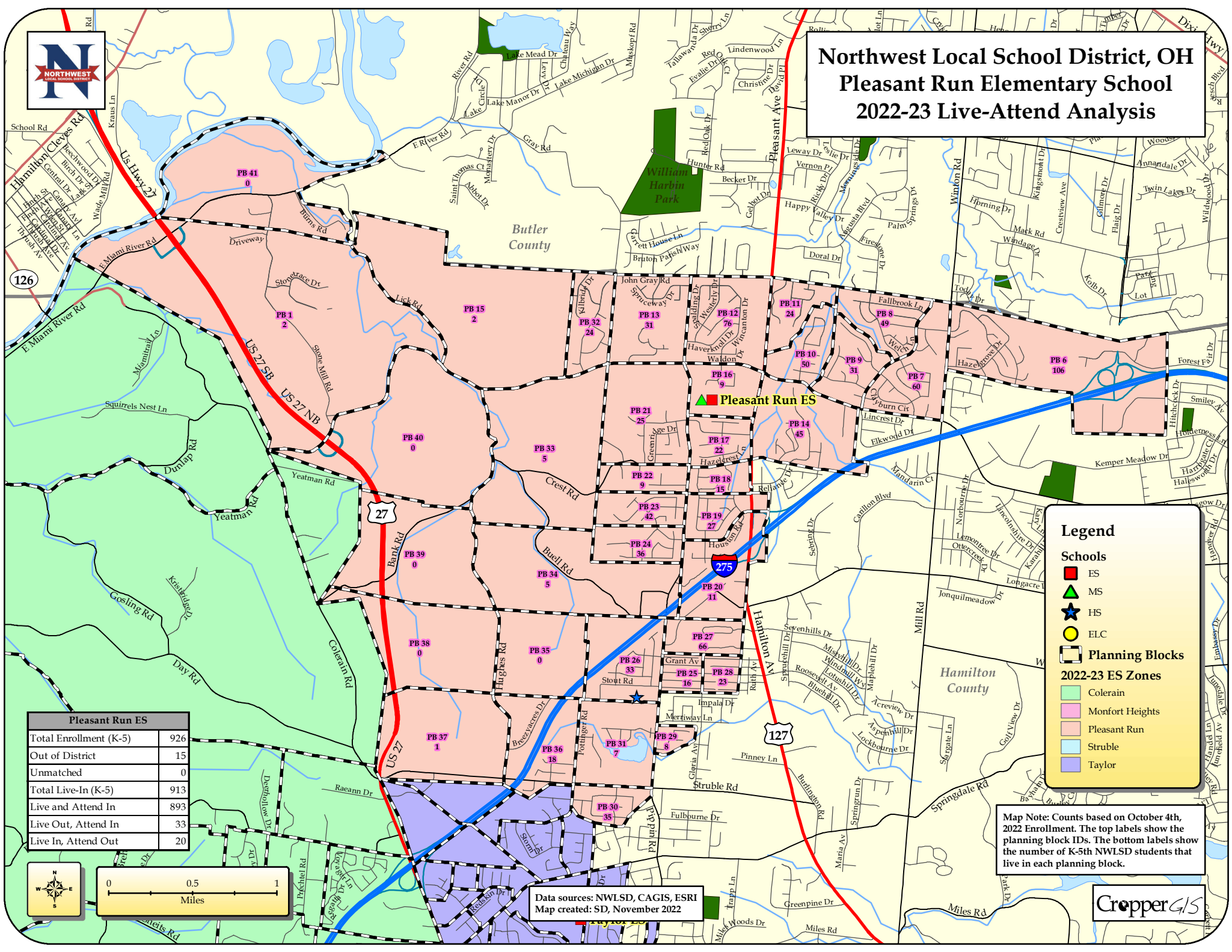
Monfort Heights ES	
Total Enrollment (K-5)	495
Out of District	7
Unmatched	0
Total Live-In (K-5)	460
Live and Attend In	444
Live Out, Attend In	51
Live In, Attend Out	16

Data sources: NWLSD, CAGIS, ESRI
Map created: SD, November 2022

CropperGIS



Northwest Local School District, OH Pleasant Run Elementary School 2022-23 Live-Attend Analysis



Pleasant Run ES	
Total Enrollment (K-5)	926
Out of District	15
Unmatched	0
Total Live-In (K-5)	913
Live and Attend In	893
Live Out, Attend In	33
Live In, Attend Out	20

Legend

Schools

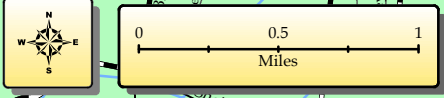
- ES (Red square)
- MS (Green triangle)
- HS (Blue star)
- ELC (Yellow circle)

Planning Blocks

2022-23 ES Zones

- Colerain (Light green)
- Monfort Heights (Light pink)
- Pleasant Run (Light pink)
- Struble (Light blue)
- Taylor (Light purple)

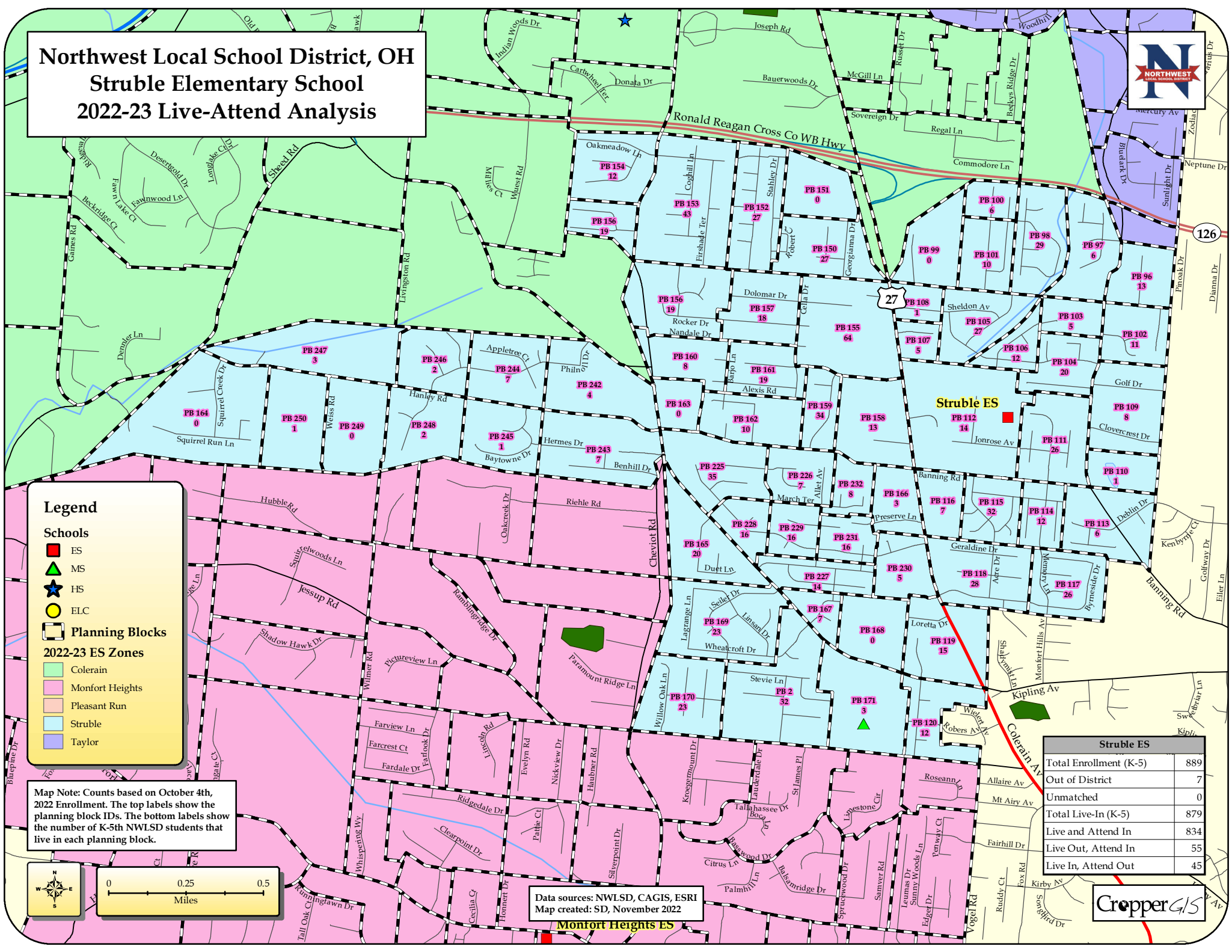
Map Note: Counts based on October 4th, 2022 Enrollment. The top labels show the planning block IDs. The bottom labels show the number of K-5th NWLSD students that live in each planning block.



Data sources: NWLSD, CAGIS, ESRI
Map created: SD, November 2022



Northwest Local School District, OH Struble Elementary School 2022-23 Live-Attend Analysis



Legend

Schools

- ES (Red square)
- MS (Green triangle)
- HS (Blue star)
- ELC (Yellow circle)

Planning Blocks

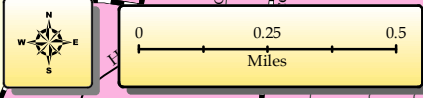
2022-23 ES Zones

- Colerain (Green)
- Monfort Heights (Pink)
- Pleasant Run (Orange)
- Struble (Light Blue)
- Taylor (Purple)

Map Note: Counts based on October 4th, 2022 Enrollment. The top labels show the planning block IDs. The bottom labels show the number of K-5th NWLSD students that live in each planning block.

Struble ES	
Total Enrollment (K-5)	889
Out of District	7
Unmatched	0
Total Live-In (K-5)	879
Live and Attend In	834
Live Out, Attend In	55
Live In, Attend Out	45

Data sources: NWLSD, CAGIS, ESRI
Map created: SD, November 2022





Northwest Local School District, OH Taylor Elementary School 2022-23 Live-Attend Analysis

Taylor ES	
Total Enrollment (K-5)	823
Out of District	17
Unmatched	0
Total Live-In (K-5)	837
Live and Attend In	771
Live Out, Attend In	52
Live In, Attend Out	66

Legend

Schools

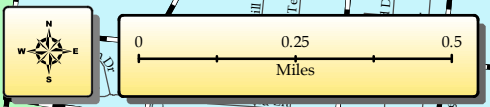
- ES (Red square)
- MS (Green triangle)
- HS (Blue star)
- ELC (Yellow circle)

Planning Blocks

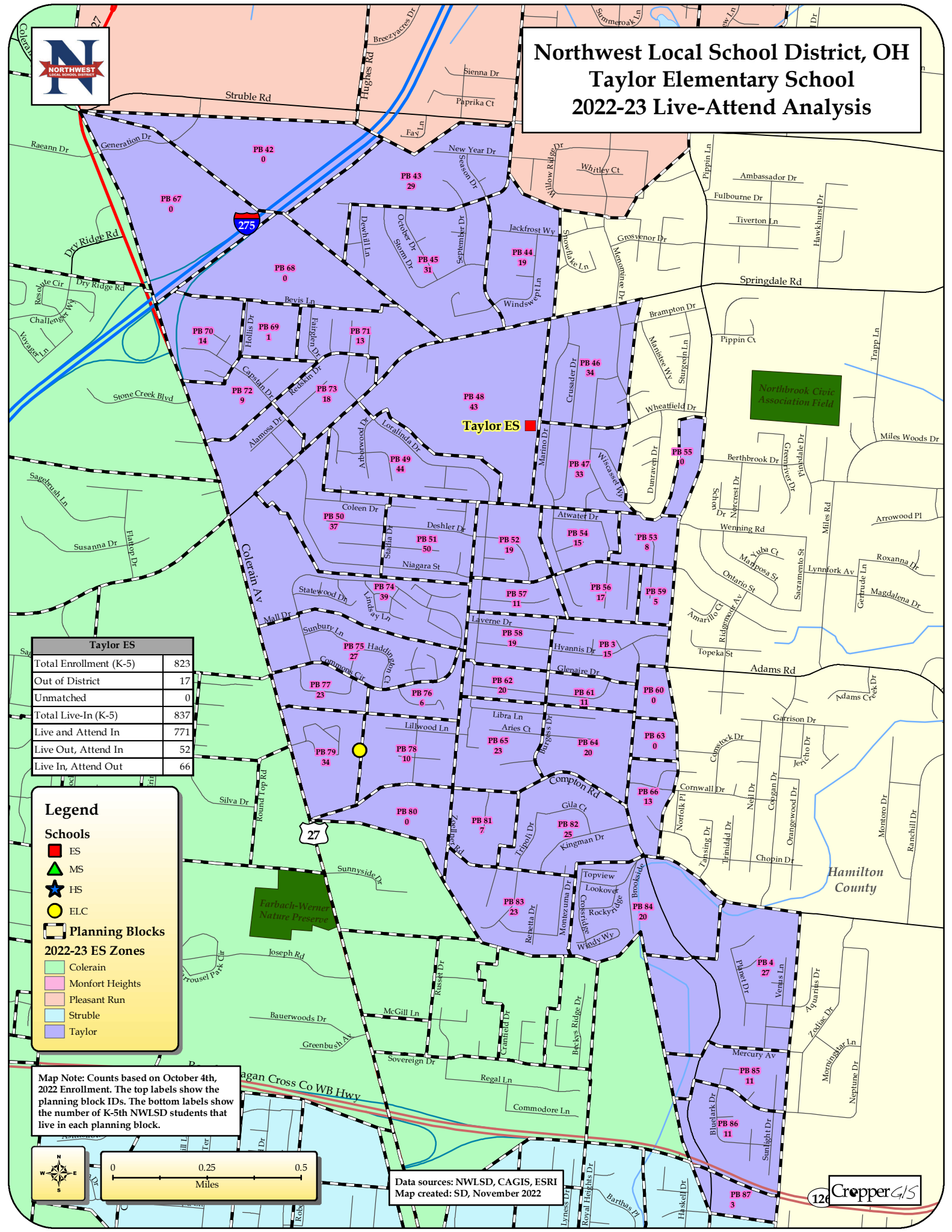
2022-23 ES Zones

- Colerain (Light green)
- Monfort Heights (Pink)
- Pleasant Run (Light blue)
- Struble (Light blue)
- Taylor (Purple)

Map Note: Counts based on October 4th, 2022 Enrollment. The top labels show the planning block IDs. The bottom labels show the number of K-5th NWLSD students that live in each planning block.



Data sources: NWLSD, CAGIS, ESRI
Map created: SD, November 2022



Northwest Local School District, OH Colerain Middle School 2022-23 Live-Attend Analysis



Colerain MS	
Total Enrollment (6-8)	586
Out of District	6
Unmatched	0
Total Live-In (6-8)	566
Live and Attend In	538
Live Out, Attend In	48
Live In, Attend Out	28

Legend

Schools

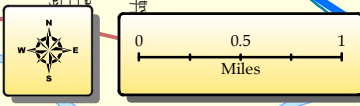
- ES (Red square)
- MS (Green triangle)
- HS (Blue star)
- ELC (Yellow circle)

Planning Blocks

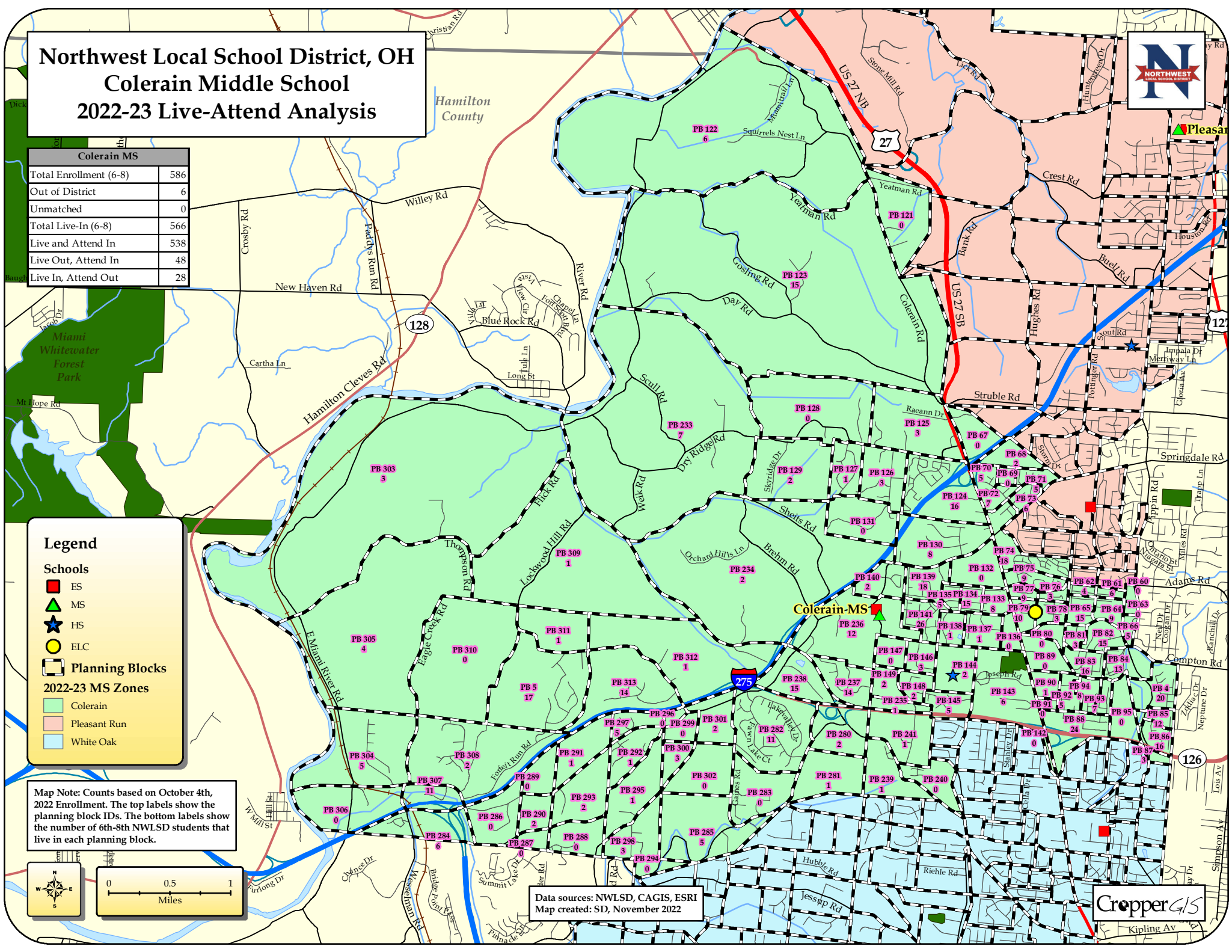
2022-23 MS Zones

- Colerain (Light green)
- Pleasant Run (Light pink)
- White Oak (Light blue)

Map Note: Counts based on October 4th, 2022 Enrollment. The top labels show the planning block IDs. The bottom labels show the number of 6th-8th NWLSD students that live in each planning block.

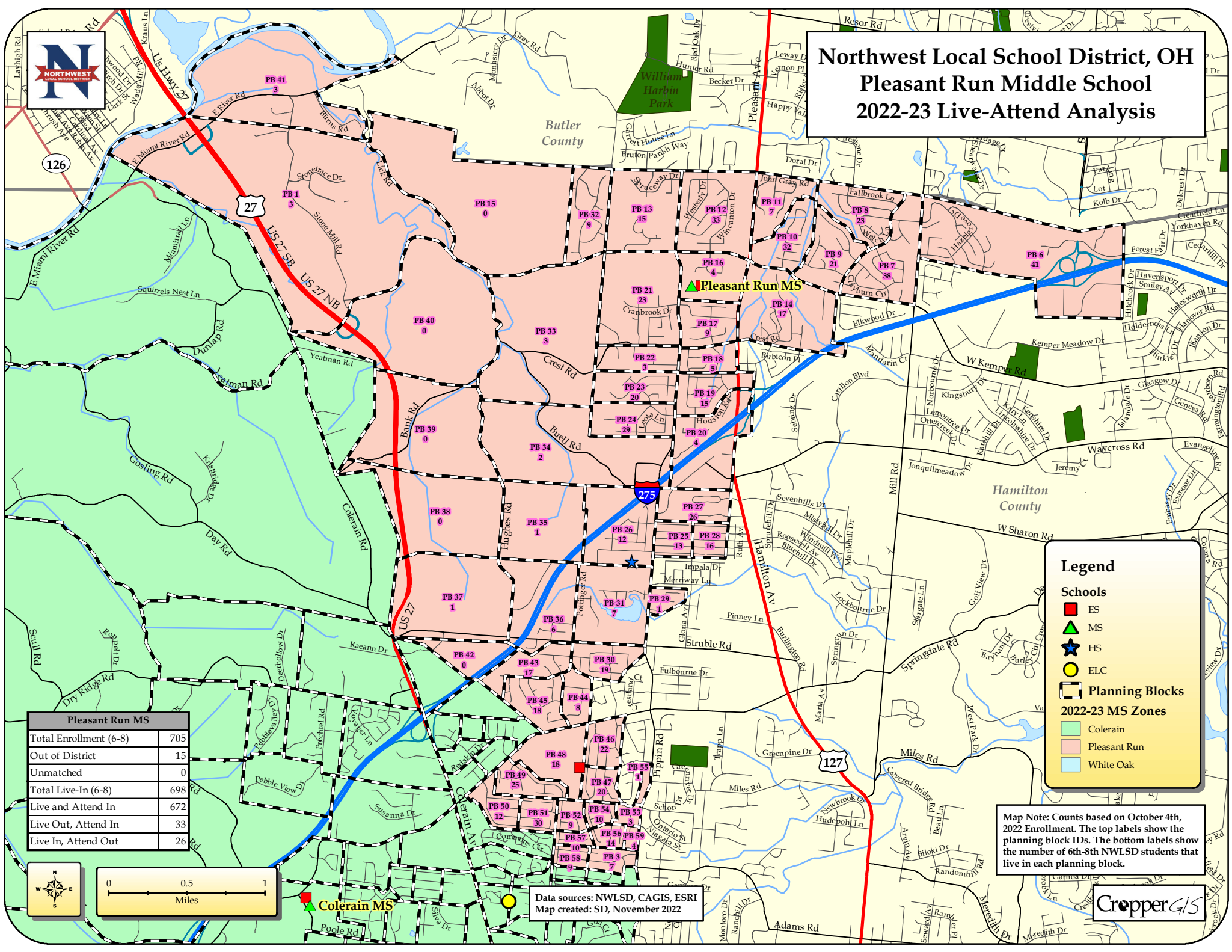


Data sources: NWLSD, CAGIS, ESRI
Map created: SD, November 2022





Northwest Local School District, OH Pleasant Run Middle School 2022-23 Live-Attend Analysis



Pleasant Run MS	
Total Enrollment (6-8)	705
Out of District	15
Unmatched	0
Total Live-In (6-8)	698
Live and Attend In	672
Live Out, Attend In	33
Live In, Attend Out	26

Legend

Schools

- ES (Elementary School): Red square
- MS (Middle School): Green triangle
- HS (High School): Blue star
- ELC (Elementary Learning Center): Yellow circle

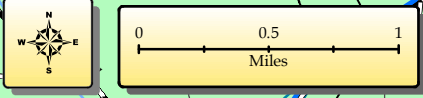
Planning Blocks

2022-23 MS Zones

- Colerain: Light green background
- Pleasant Run: Light pink background
- White Oak: Light blue background

Map Note: Counts based on October 4th, 2022 Enrollment. The top labels show the planning block IDs. The bottom labels show the number of 6th-8th NWLSD students that live in each planning block.

Data sources: NWLSD, CAGIS, ESRI
Map created: SD, November 2022



Northwest Local School District, OH

White Oak Middle School

2022-23 Live-Attend Analysis



White Oak MS	
Total Enrollment (6-8)	729
Out of District	8
Unmatched	0
Total Live-In (6-8)	727
Live and Attend In	700
Live Out, Attend In	29
Live In, Attend Out	27

Legend

Schools

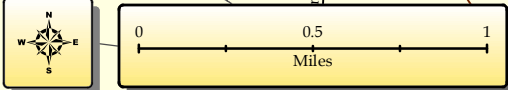
- ES (Elementary School) - Red square
- MS (Middle School) - Green triangle
- HS (High School) - Blue star
- ELC (Elementary Learning Center) - Yellow circle

Planning Blocks

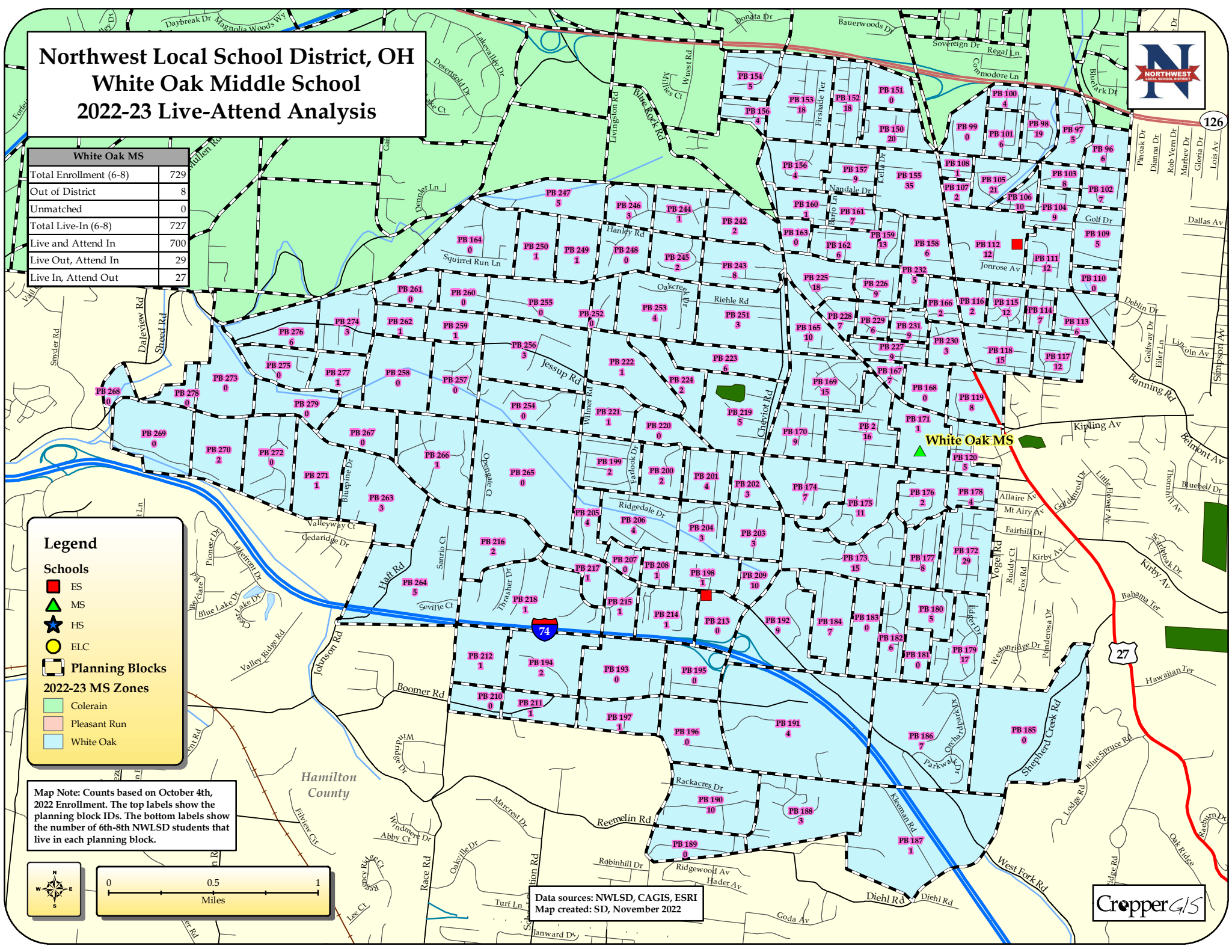
2022-23 MS Zones

- Colerain - Light green
- Pleasant Run - Light orange
- White Oak - Light blue

Map Note: Counts based on October 4th, 2022 Enrollment. The top labels show the planning block IDs. The bottom labels show the number of 6th-8th NWLSD students that live in each planning block.



Data sources: NWLSD, CAGIS, ESRI
Map created: SD, November 2022



Northwest Local School District, OH Colerain High School - Section 1 2022-23 Live-Attend Analysis



Colerain HS	
Total Enrollment (9-12)	1,857
Out of District	20
Unmatched	0
Total Live-In (9-12)	1,803
Live and Attend In	1,777
Live Out, Attend In	80
Live In, Attend Out	26

Map Note: Counts based on October 4th, 2022 Enrollment. The top labels show the planning block IDs. The bottom labels show the number of 9th-12th NWLSD students that live in each planning block.

Legend

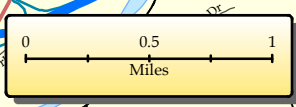
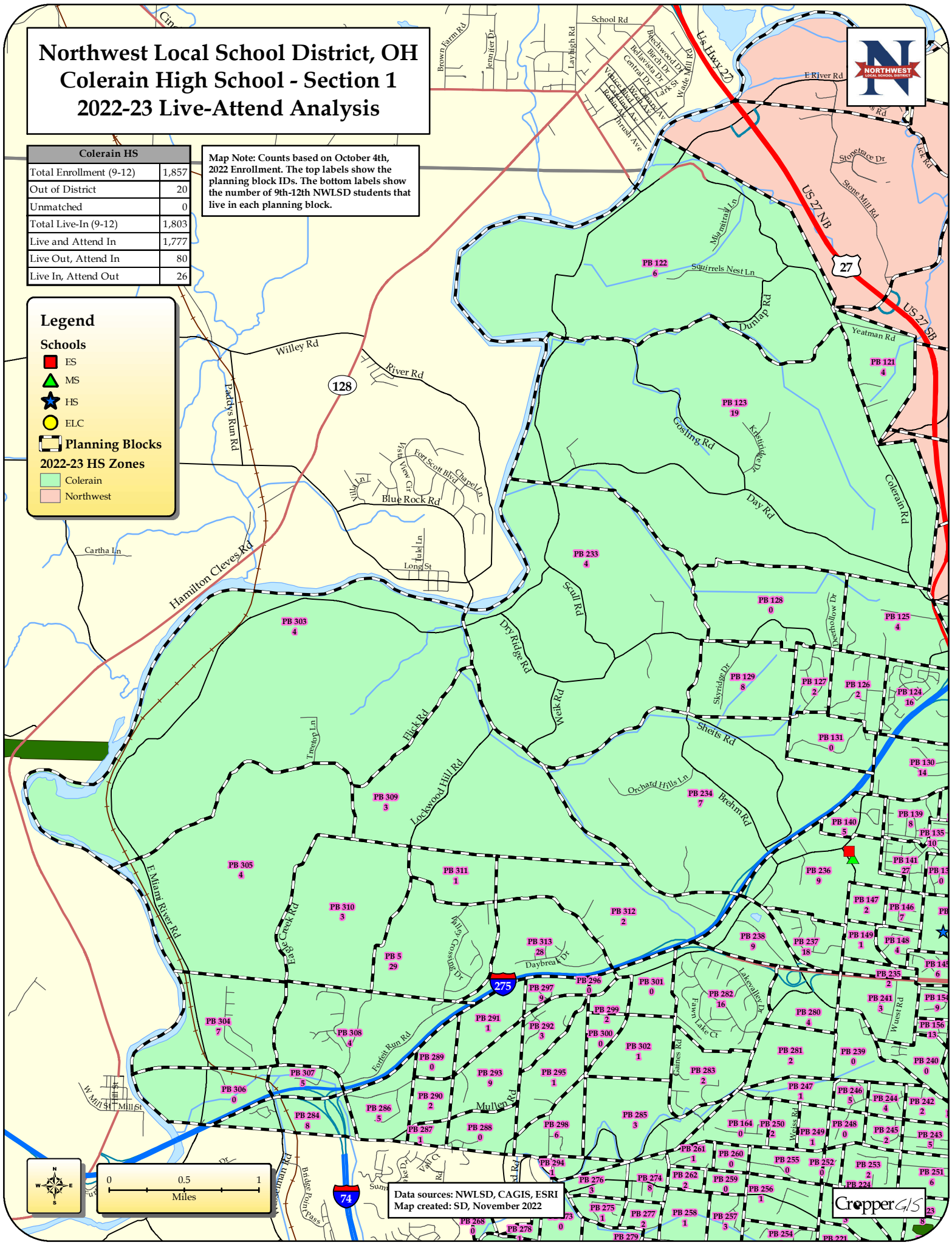
Schools

- ES (Red square)
- MS (Green triangle)
- HS (Blue star)
- ELC (Yellow circle)

Planning Blocks

2022-23 HS Zones

- Colerain (Light green)
- Northwest (Light pink)



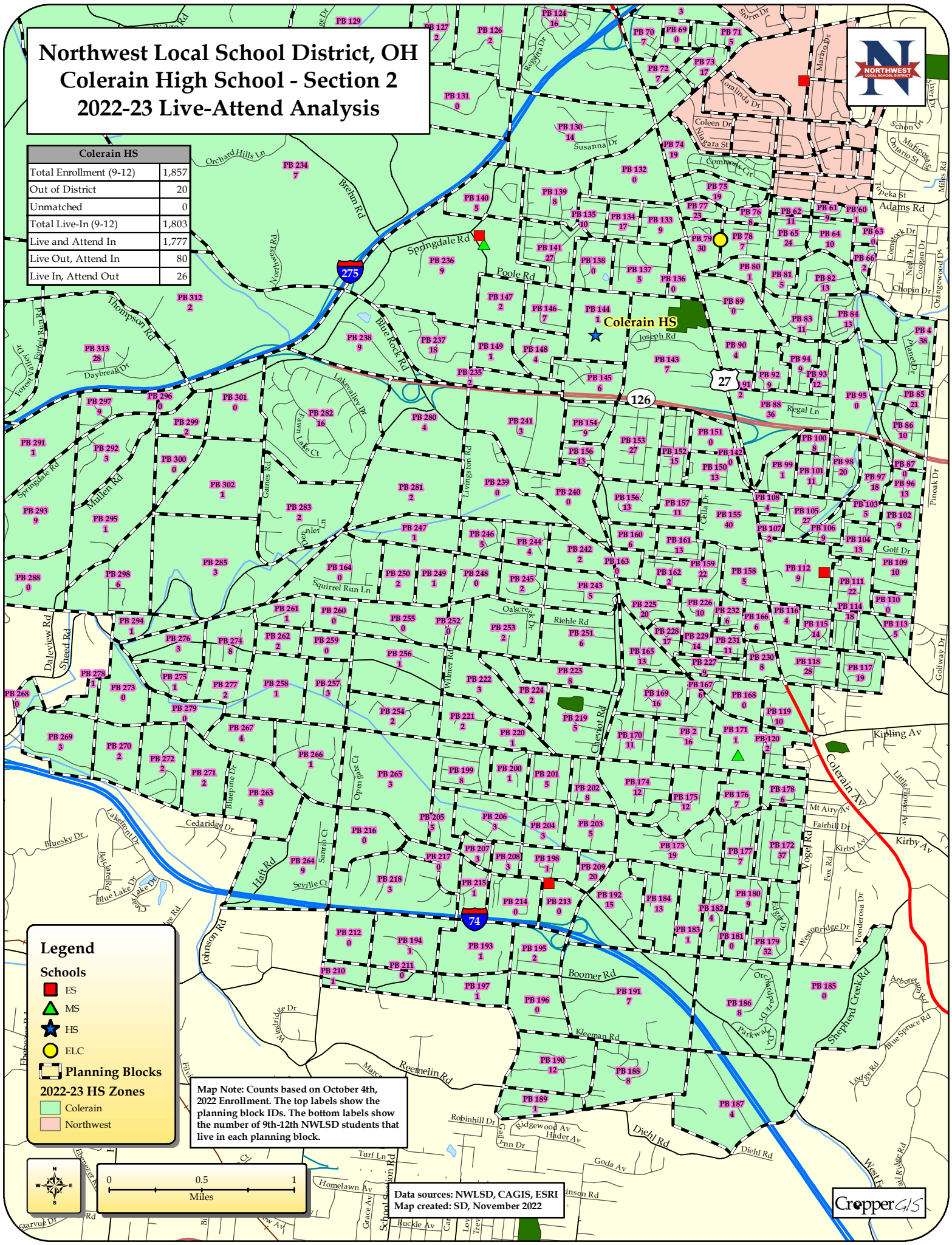
Data sources: NWLSD, CAGIS, ESRI
Map created: SD, November 2022



Northwest Local School District, OH Colerain High School - Section 2 2022-23 Live-Attend Analysis



Colerain HS	
Total Enrollment (9-12)	1,857
Out of District	20
Unmatched	0
Total Live-In (9-12)	1,803
Live and Attend In	1,777
Live Out, Attend In	80
Live In, Attend Out	26



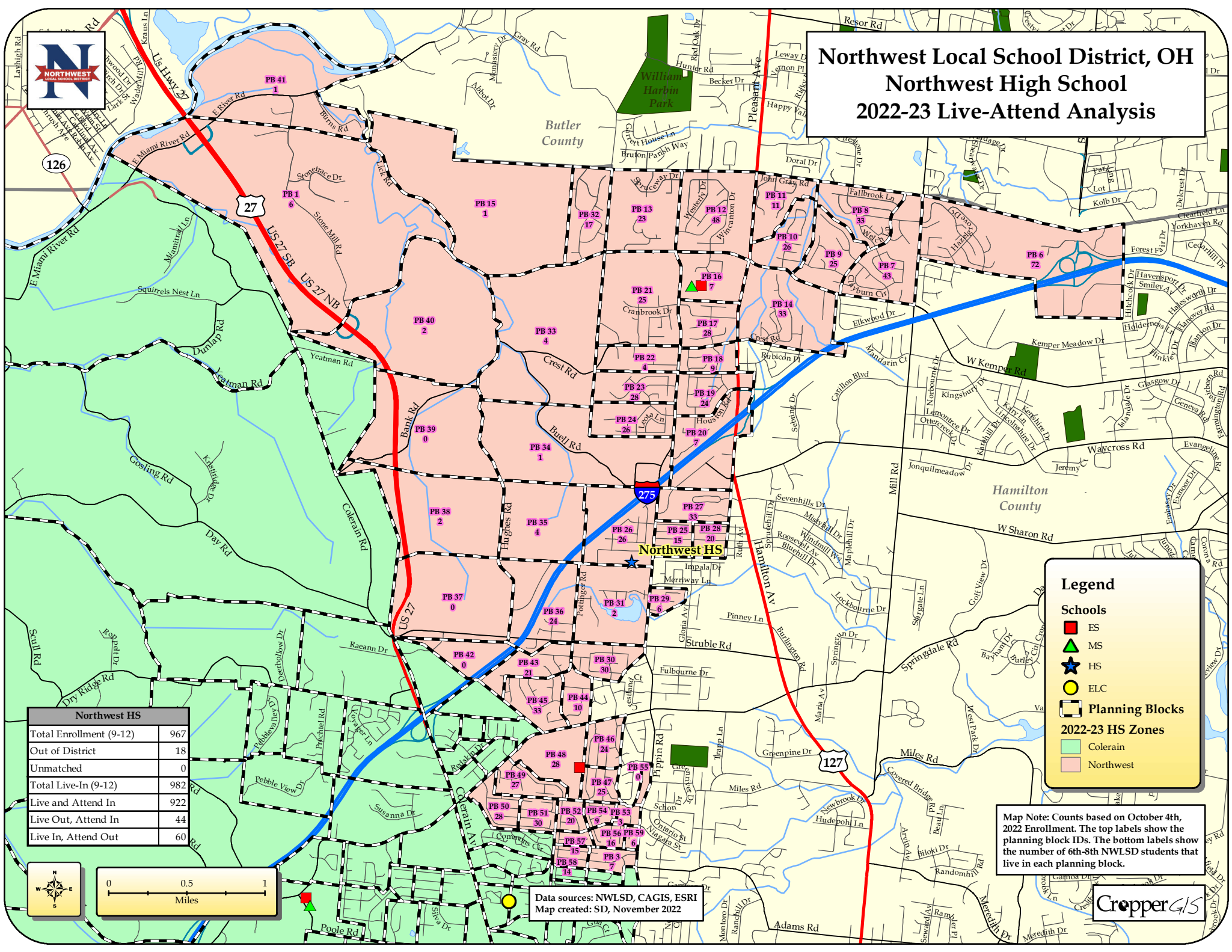
Map Note: Counts based on October 4th, 2022 Enrollment. The top labels show the planning block IDs. The bottom labels show the number of 9th-12th NWLSD students that live in each planning block.

Data sources: NWLSD, CAGIS, ESRI
Map created: SD, November 2022

CropperGIS



Northwest Local School District, OH Northwest High School 2022-23 Live-Attend Analysis



Northwest HS	
Total Enrollment (9-12)	967
Out of District	18
Unmatched	0
Total Live-In (9-12)	982
Live and Attend In	922
Live Out, Attend In	44
Live In, Attend Out	60

Legend

Schools

- ES (Red Square)
- MS (Green Triangle)
- HS (Blue Star)
- ELC (Yellow Circle)

Planning Blocks

2022-23 HS Zones

- Colerain (Light Green)
- Northwest (Pink)

Map Note: Counts based on October 4th, 2022 Enrollment. The top labels show the planning block IDs. The bottom labels show the number of 6th-8th NWLSD students that live in each planning block.

Data sources: NWLSD, CAGIS, ESRI
Map created: SD, November 2022

