



Northwest Local School District, OH

IPT Meeting 3 Handout: DRAFT Options Analysis
December 7, 2022

Cropper *GIS*

IPT Meeting Handout: DRAFT Options Analysis

The following document contains a series of tables and maps comparing current enrollment and utilization statistics with the first two DRAFT options. Impact and feeder pattern tables are also included. These DRAFT options are a starting point for discussion. The current student enrollment numbers were derived from the district's 2022-23 Student Database dated October 4, 2022.

Glossary of Terms

Capacity -the number of students that an individual school has the physical capacity to enroll and can be reasonably accommodated in a facility.

Utilization - Utilization is the total enrollment divided by the capacity, described as a percentage.

Live-in students - Students residing inside of a school attendance boundary, regardless of where that student attends school.

Live and Attend - Students who attend the assigned schools for the zones where they live.

Live Out Attend In - Students that live outside of their attending school's boundary but reside within the Northwest Local School District's boundary.

Out of District students - Students that live outside of the Northwest Local School District's boundary.

Unmatched students - Students whose address was not able to be located by the GIS.

Feeder Pattern - The number of students living within the attendance boundary of both a lower grade cohort (ex. Elementary schools) and a higher-grade cohort (i.e., Middle School). This is given as both the number of Live-In students and described as a percentage.



ES Enrollment and Utilization Tables

The following tables show current utilization by percentage based on current enrollment and 2022-23 building capacity compared to DRAFT option estimated enrollment based on student live-in (students are assumed to attend the school to which they are zoned). Cells are color coded based on deviation from the standard percentage in each field. Percentages are rounded.

Within 10%
Between 10-15%
Over/Under 15%

		ES Current (2022-23)									
		Enrollment and Utilization									
Elementary School	2022-23 Capacity	Grade Config.	0	1	2	3	4	5	Current Enrollment	Current Utilization	Trend
Colerain Elementary	760	K-5	93	99	96	96	88	114	586	77%	▼
Monfort Heights Elementary	695	K-5	80	80	65	77	95	98	495	71%	▼
Pleasant Run Elementary	834	K-5	136	174	156	159	158	143	926	111%	▬
Struble Elementary	834	K-5	143	155	146	130	155	160	889	107%	▼
Taylor Elementary	834	K-5	141	146	135	139	141	121	823	99%	▲
Total	3,957		593	654	598	601	637	636	3,719	94%	▼

		ES Option 1									
		Enrollment and Utilization									
Elementary School	2022-23 Capacity	Grade Config.	KG	01	02	03	04	05	Estimated Enrollment	Estimated Utilization	Trend
Colerain Elementary	760	K-5	115	127	112	110	103	129	696	92%	▬
Monfort Heights Elementary	695	K-5	91	107	92	91	118	126	625	90%	▼
Pleasant Run Elementary	834	K-5	114	137	129	135	146	126	787	94%	▼
Struble Elementary	834	K-5	134	134	124	130	141	137	800	96%	▼
Taylor Elementary	834	K-5	139	149	141	135	129	118	811	97%	▲
Total	3,957		593	654	598	601	637	636	3,719	94%	▼

		ES Option 2									
		Enrollment and Utilization									
Elementary School	2022-23 Capacity	Grade Config.	KG	01	02	03	04	05	Estimated Enrollment	Estimated Utilization	Trend
Colerain Elementary	760	K-5	110	127	105	112	109	120	683	90%	▬
Monfort Heights Elementary	695	K-5	93	109	99	93	120	128	642	92%	▼
Pleasant Run Elementary	834	K-5	126	148	141	145	149	130	839	101%	▬
Struble Elementary	834	K-5	124	122	115	116	127	130	734	88%	▼
Taylor Elementary	834	K-5	140	148	138	135	132	128	821	98%	▲
Total	3,957		593	654	598	601	637	636	3,719	94%	▼



MS Enrollment and Utilization Tables

		MS Current (2022-23)						
		Enrollment and Utilization						
Middle School	2022-23 Capacity	Grade Config.	6	7	8	Current Enrollment	Current Utilization	Trend
Colerain Middle School	449	6-8	191	199	196	586	131%	▼
Pleasant Run Middle School	692	6-8	206	233	266	705	102%	▼
White Oak Middle School	587	6-8	236	228	265	729	124%	▼
Total	1,728		633	660	727	2,020	117%	▼

		MS Option 1						
		Enrollment and Utilization						
Middle School	2022-23 Capacity	Grade Config.	06	07	08	Estimated Enrollment	Estimated Utilization	Trend
Colerain Middle School	449	6-8	166	183	167	516	115%	▬
Pleasant Run Middle School	692	6-8	210	239	264	713	103%	▼
White Oak Middle School	587	6-8	257	238	296	791	135%	▼
Total	1,728		633	660	727	2,020	117%	▼

		MS Option 2						
		Enrollment and Utilization						
Middle School	2022-23 Capacity	Grade Config.	06	07	08	Estimated Enrollment	Estimated Utilization	Trend
Colerain Middle School	449	6-8	176	197	185	558	124%	▼
Pleasant Run Middle School	692	6-8	212	240	267	719	104%	▼
White Oak Middle School	587	6-8	245	223	275	743	127%	▼
Total	1,728		633	660	727	2,020	117%	▼



HS Enrollment and Utilization Tables

		HS Current (2022-23)							
		Enrollment and Utilization							
High School	2022-23 Capacity	Grade Config.	9	10	11	12	Current Enrollment	Current Utilization	Trend
Colerain High School	1,750	9-12	434	497	462	464	1,857	106%	▼
Northwest High School	1,173	9-12	260	259	208	240	967	82%	▲
Total	2,923		694	756	670	704	2,824	97%	▲

		HS Option 1							
		Enrollment and Utilization							
High School	2022-23 Capacity	Grade Config.	9	10	11	12	Estimated Enrollment	Estimated Utilization	Trend
Colerain High School	1,750	9-12	425	491	447	460	1,823	104%	▼
Northwest High School	1,173	9-12	269	264	223	244	1,000	85%	▲
Total	2,923		694	755	670	704	2,823	97%	▲

		HS Option 2							
		Enrollment and Utilization							
High School	2022-23 Capacity	Grade Config.	9	10	11	12	Current Enrollment	Current Utilization	Trend
Colerain High School	1,750	9-12	424	491	444	454	1,813	104%	▼
Northwest High School	1,173	9-12	270	264	226	250	1,010	86%	▲
Total	2,923		694	755	670	704	2,823	97%	▲



ES Demographic Statistics

The following tables compare current race/ethnic and free/reduced lunch demographic statistics to the DRAFT options statistics. Statistics are shown as a percentage of students by school compared to the district average percentage.

ES Current (2022-23)										
Race / Ethnicity Percentage									Lunch Percentage	
Elementary School	Asian	Black	Hispanic	American Indian	Mutli-racial	Native Hawaiian or P.I.	White	No Race Code	Free	Reduced
Colerain Elementary	6%	19%	6%	0%	14%	0%	55%	1%	39%	9%
Monfort Heights Elementary	5%	22%	3%	0%	12%	0%	57%	0%	36%	9%
Pleasant Run Elementary	6%	43%	8%	0%	12%	0%	29%	1%	42%	6%
Struble Elementary	14%	34%	6%	0%	10%	0%	35%	1%	44%	7%
Taylor Elementary	1%	42%	10%	0%	14%	1%	30%	1%	48%	6%
Total	7%	34%	7%	0%	12%	0%	39%	1%	43%	7%

ES Option 1										
Race / Ethnicity Percentage									Lunch Percentage	
Elementary School	Asian	Black	Hispanic	American Indian	Mutli-racial	Native Hawaiian or P.I.	White	No Race Code	Free	Reduced
Colerain Elementary	5%	23%	6%	0%	14%	0%	51%	1%	36%	8%
Monfort Heights Elementary	9%	20%	4%	0%	11%	0%	56%	0%	35%	9%
Pleasant Run Elementary	7%	44%	8%	0%	12%	0%	28%	1%	41%	6%
Struble Elementary	12%	40%	6%	0%	11%	0%	31%	1%	48%	7%
Taylor Elementary	2%	39%	9%	0%	14%	1%	33%	1%	50%	6%
Total	7%	34%	7%	0%	12%	0%	39%	1%	43%	7%



ES Demographic Statistics Continued

ES Option 2										
Elementary School	Race / Ethnicity Percentage								Lunch Percentage	
	Asian	Black	Hispanic	American Indian	Mutli-racial	Native Hawaiian or P.I.	White	No Race Code	Free	Reduced
Colerain Elementary	5%	27%	7%	0%	14%	0%	44%	1%	39%	8%
Monfort Heights Elementary	10%	21%	4%	0%	11%	0%	57%	0%	36%	9%
Pleasant Run Elementary	7%	45%	9%	0%	13%	0%	32%	1%	44%	6%
Struble Elementary	11%	35%	5%	0%	10%	0%	29%	1%	44%	6%
Taylor Elementary	2%	39%	9%	0%	14%	1%	35%	1%	48%	6%
Total	7%	34%	7%	0%	12%	0%	39%	1%	43%	7%



MS Demographic Statistics

MS Current (2022-23)										
Race / Ethnicity Percentage									Lunch Percentage	
Middle School	Asian	Black	Hispanic	American Indian	Mutli-racial	Native Hawaiian or P.I.	White	No Race Code	Free	Reduced
Colerain Middle School	2%	32%	4%	0%	13%	1%	45%	1%	42%	10%
Pleasant Run Middle School	3%	41%	8%	0%	15%	1%	33%	1%	44%	5%
White Oak Middle School	6%	35%	5%	0%	11%	0%	43%	1%	40%	7%
Total	4%	36%	5%	0%	13%	0%	40%	1%	42%	7%

MS Option 1										
Race / Ethnicity Percentage									Lunch Percentage	
Middle School	Asian	Black	Hispanic	American Indian	Mutli-racial	Native Hawaiian or P.I.	White	No Race Code	Free	Reduced
Colerain Middle School	2%	29%	4%	0%	14%	1%	49%	2%	41%	9%
Pleasant Run Middle School	3%	40%	8%	0%	14%	1%	33%	1%	43%	5%
White Oak Middle School	5%	37%	5%	0%	11%	0%	41%	1%	42%	8%
Total	4%	36%	5%	0%	13%	0%	40%	1%	42%	7%



MS Demographic Statistics Continued

Middle School	MS Option 2									
	Race / Ethnicity Percentage								Lunch Percentage	
	Asian	Black	Hispanic	American Indian	Mutli-racial	Native Hawaiian or P.I.	White	No Race Code	Free	Reduced
Colerain Middle School	2%	33%	4%	0%	13%	1%	45%	1%	44%	10%
Pleasant Run Middle School	3%	40%	8%	0%	14%	1%	33%	1%	43%	5%
White Oak Middle School	6%	35%	4%	0%	11%	0%	44%	1%	40%	7%
Total	4%	36%	5%	0%	13%	0%	40%	1%	42%	7%



HS Enrollment and Utilization Statistics

HS Current (2022-23)										
Race / Ethnicity Percentage									Lunch Percentage	
High School	Asian	Black	Hispanic	American Indian	Mutli-racial	Native Hawaiian	White	No Race Code	Free	Reduced
Colerain High School	4%	33%	4%	0%	10%	0%	45%	1%	39%	8%
Northwest High School	4%	40%	10%	0%	12%	1%	36%	2%	46%	9%
Total	4%	36%	6%	0%	11%	0%	42%	1%	41%	8%

HS Option 1										
Race / Ethnicity Percentage									Lunch Percentage	
High School	Asian	Black	Hispanic	American Indian	Mutli-racial	Native Hawaiian	White	No Race Code	Free	Reduced
Colerain High School	4%	34%	4%	0%	10%	0%	46%	1%	39%	8%
Northwest High School	4%	39%	9%	0%	11%	1%	34%	2%	44%	8%
Total	4%	36%	6%	0%	11%	0%	42%	1%	41%	8%



HS Enrollment and Utilization Statistics Continued

HS Option 2										
High School	Race / Ethnicity Percentage								Lunch Percentage	
	Asian	Black	Hispanic	American Indian	Mutli-racial	Native Hawaiian	White	No Race Code	Free	Reduced
Colerain High School	4%	34%	4%	0%	10%	0%	46%	1%	39%	8%
Northwest High School	4%	39%	9%	0%	11%	1%	35%	2%	44%	9%
Total	4%	36%	6%	0%	11%	0%	42%	1%	41%	8%



Feeder Patterns

The following tables show the percentage of students from each elementary school that attend each middle school upon graduating 5th grade and the percentage of students from each middle school that attend each high school upon graduating 8th grade in both the current zone configuration and the DRAFT options.

Number of Splits

	ES to MS Splits	MS to HS Splits
Current	1	0
Option 1	1	0
Option 2	1	0

Current ES to MS Feeder

2022-23 ES Zone	2022-23 MS Zone	ES Attendance
Colerain	Colerain	100%
Monfort Heights	White Oak	100%
Pleasant Run	Pleasant Run	100%
Struble	White Oak	100%
Taylor	Colerain	49%
Taylor	Pleasant Run	51%

Current MS to HS Feeder

2022-23 MS Zone	2022-23 HS Zone	MS Attendance
Colerain	Colerain	100%
Pleasant Run	Northwest	100%
White Oak	Colerain	100%

ES Option 1 to MS Option 1 Feeder

ES Option 1	MS Option 1	ES Attendance
Colerain	Colerain	100%
Monfort Heights	White Oak	100%
Pleasant Run	Pleasant Run	100%
Struble	White Oak	100%
Taylor	Colerain	28%
Taylor	Pleasant Run	72%



MS Option 1 to HS Option 1 Feeder

MS Option 1	HS Option 1	ES Attendance
Colerain	Colerain	100%
Pleasant Run	Northwest	100%
White Oak	Colerain	100%

ES Option 2 to MS Option 2 Feeder

ES Option 2	MS Option 2	ES Attendance
Colerain	Colerain	100%
Monfort Heights	White Oak	100%
Pleasant Run	Pleasant Run	100%
Struble	White Oak	100%
Taylor	Colerain	34%
Taylor	Pleasant Run	66%

MS Option 2 to HS Option 2

MS Option 2	HS Option 2	ES Attendance
Colerain	Colerain	100%
Pleasant Run	Northwest	100%
White Oak	Colerain	100%



ES Impact Tables

The following tables show how many students are impacted in the DRAFT options. Rows highlighted in green show areas that are not impacted, and rows highlighted in tan show impacted areas.

Total Students Impacted

Student Impact Estimates		
Option	Total K-5th Live-In Students Impacted	Percent K-5th Live-In Students Impacted
ES Option 1	484	13.2%
ES Option 2	524	14.3%

ES Option 1 Impacts

ES Zone 2022-23	ES Option 1	Total 2022-23 K-5th Live-In Students
Colerain	Colerain	559
Colerain	Monfort Heights	19
Monfort Heights	Monfort Heights	459
Pleasant Run	Pleasant Run	772
Pleasant Run	Taylor	141
Struble	Monfort Heights	140
Struble	Struble	741
Taylor	Colerain	132
Taylor	Struble	52
Taylor	Taylor	653

ES Option 2 Impacts

ES Zone 2022-23	ES Option 2	Total 2022-23 K-5th Live-In Students
Colerain	Colerain	497
Colerain	Monfort Heights	19
Colerain	Pleasant Run	13
Colerain	Taylor	49
Monfort Heights	Monfort Heights	459
Pleasant Run	Pleasant Run	811
Pleasant Run	Taylor	102
Struble	Monfort Heights	157
Struble	Struble	724
Taylor	Colerain	181
Taylor	Struble	3
Taylor	Taylor	653



MS Impact Tables

Total Students Impacted

Student Impact Estimates		
Option	Total 6th-8th Live-In Students Impacted	Percent 6th-8th Live-In Students Impacted
MS Option 1	56	2.8%
MS Option 2	14	0.7%

MS Option 1 Impacts

MS Zone 2022-23	MS Option 1	Total 2022-23 6th-8th Live-In Students
Colerain	Colerain	510
Colerain	White Oak	56
Pleasant Run	Pleasant Run	698
White Oak	White Oak	727

MS Option 2 Impacts

MS Zone 2022-23	MS Option 2	Total 2022-23 6th-8th Live-In Students
Colerain	Colerain	552
Colerain	Pleasant Run	6
Colerain	White Oak	8
Pleasant Run	Pleasant Run	698
White Oak	White Oak	727



HS Impact Tables

Total Students Impacted

Student Impact Estimates		
Option	Total 9th-12th Live-In Students Impacted	Percent 9th-12th Live-In Students Impacted
HS Option 1	0	0.0%
HS Option 2	10	0.4%

HS Option 1 Impacts

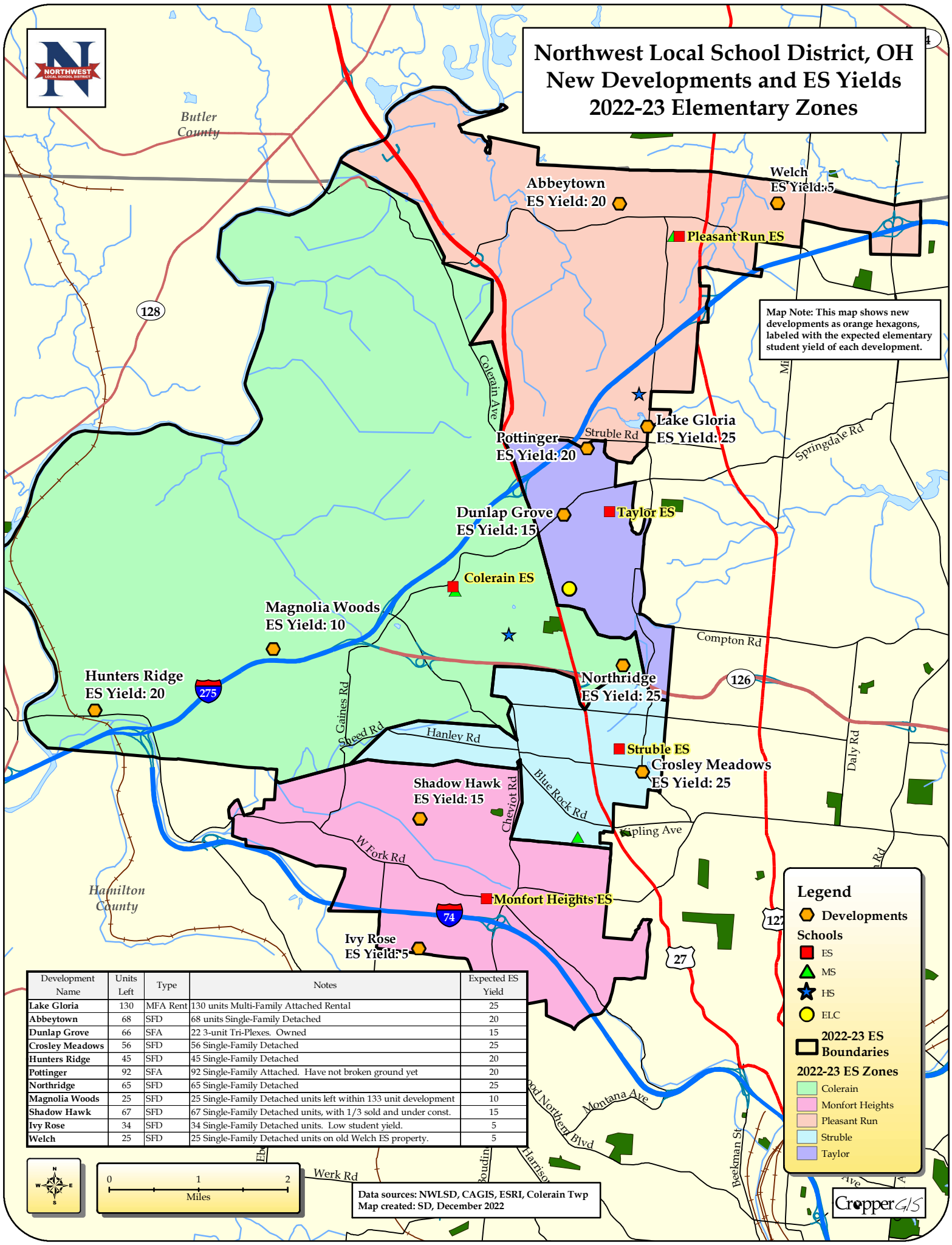
HS Zone 2022-23	HS Option 1	Total 2022-23 9th-12th Live-In Students
Colerain	Colerain	1,803
Northwest	Northwest	982

HS Option 2 Impacts

HS Zone 2022-23	HS Option 2	Total 2022-23 9th-12th Live-In Students
Colerain	Colerain	1,793
Colerain	Northwest	10
Northwest	Northwest	982



Northwest Local School District, OH New Developments and ES Yields 2022-23 Elementary Zones



Map Note: This map shows new developments as orange hexagons, labeled with the expected elementary student yield of each development.

Legend

- Developments
- Schools**
- ES
- MS
- HS
- ELC
- 2022-23 ES Boundaries
- 2022-23 ES Zones**
- Colerain
- Monfort Heights
- Pleasant Run
- Struble
- Taylor

Development Name	Units Left	Type	Notes	Expected ES Yield
Lake Gloria	130	MFA Rent	130 units Multi-Family Attached Rental	25
Abbeytown	68	SFD	68 units Single-Family Detached	20
Dunlap Grove	66	SFA	22 3-unit Tri-Plexes. Owned	15
Crosley Meadows	56	SFD	56 Single-Family Detached	25
Hunters Ridge	45	SFD	45 Single-Family Detached	20
Pottinger	92	SFA	92 Single-Family Attached. Have not broken ground yet	20
Northridge	65	SFD	65 Single-Family Detached	25
Magnolia Woods	25	SFD	25 Single-Family Detached units left within 133 unit development	10
Shadow Hawk	67	SFD	67 Single-Family Detached units, with 1/3 sold and under const.	15
Ivy Rose	34	SFD	34 Single-Family Detached units. Low student yield.	5
Welch	25	SFD	25 Single-Family Detached units on old Welch ES property.	5



Data sources: NWLSD, CAGIS, ESRI, Colerain Twp
Map created: SD, December 2022





Northwest Local School District, OH 2022-23 Elementary Zones

Butler County

4

Resor Rd

S Gilmore Rd

128

Pleasant-Run ES

Colerain Ave

Mill Rd

Struble Rd

Springdale Rd

Taylor ES

Colerain ES

27

Compton Rd

126

Struble ES

Daily Rd

Kerrison Pike

Gaines Rd

Hanley Rd

Hamilton County

W Fork Rd

Monfort Heights ES

127

264

Rice Rd

N Kings Rd

Westwood Northern Blvd

Montana Ave

Lawrence Rd

Werk Rd

Harrison Ave

Beckman St

Vine St

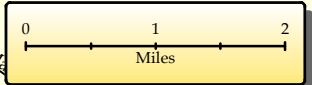
Legend

Schools

- ES (Red square)
- MS (Green triangle)
- HS (Blue star)
- ELC (Yellow circle)

2022-23 ES Boundaries

- Colerain (Green)
- Monfort Heights (Pink)
- Pleasant Run (Light pink)
- Struble (Light blue)
- Taylor (Purple)



Data sources: NWLSD, CAGIS, ESRI
Map created: SD, November 2022





Northwest Local School District, OH Elementary DRAFT Option 1

Butler County

4

128

Pleasant-Run ES

Resor Rd

S Gilmore Rd

Colerain Ave

Mill Rd

Struble Rd

Springdale Rd

Taylor ES

Colerain ES

27

Compton Rd

126

Struble ES

Harrison Pike

Gaines Rd

Hanley Rd

Daily Rd

Hamilton County

W Fork Rd

Monfort Heights ES

74

264

Rice Rd

N Lane Rd

Westwood Northern Blvd

12

Lawrence Rd

Werk Rd

Harrison Ave

Montana Ave

Beekman St

Vine St

Legend

Schools

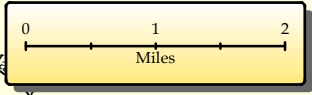
- ES (Red square)
- MS (Green triangle)
- HS (Blue star)
- ELC (Yellow circle)

2022-23 ES Boundaries

- Planning Blocks (Black outline)

ES Option 1 Zones

- Colerain (Light green)
- Monfort Heights (Light pink)
- Pleasant Run (Light orange)
- Struble (Light blue)
- Taylor (Light purple)



Data sources: NWLSD, CAGIS, ESRI
Map created: SD, November 2022





Northwest Local School District, OH Elementary DRAFT Option 2

Butler County

4

128

Pleasant-Run ES

Resor Rd

S Gilmore Rd

Colerain Ave

Mill Rd

Struble Rd

Springdale Rd

Taylor ES

Colerain ES

27

Compton Rd

126

Struble ES

Kerrison Pike

Gaines Rd

Hanley Rd

126

Daily Rd

Hamilton County

W Fork Rd

Monfort Heights ES

74

12

264

Rice Rd

N Lane Rd

Westwood Northern Blvd

Montana Ave

Lawrence Rd

Werk Rd

Harrison Ave

Beekman St

Vine St

Legend

Schools

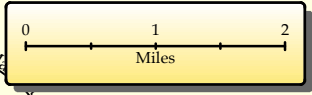
- ES (Red square)
- MS (Green triangle)
- HS (Blue star)
- ELC (Yellow circle)

2022-23 ES Boundaries

- Planning Blocks (Black outline)

ES Option 2 Zones

- Colerain (Light green)
- Monfort Heights (Light pink)
- Pleasant Run (Light orange)
- Struble (Light blue)
- Taylor (Light purple)



Data sources: NWLSD, CAGIS, ESRI
Map created: SD, November 2022





Northwest Local School District, OH 2022-23 Middle School Zones

Butler County

4

Resor Rd

S Gilmore Rd

128

Pleasant Run MS

Colerain Ave

Mill Rd

Struble Rd

Winop Rd

Colerain MS

27

Compton Rd

Kerrison Pike

Gaines Rd

126

Daily Rd

Hanley Rd

Pippin Rd

Hamilton County

White Oak MS

W Fork Rd

Cleviot Rd

127

74

Rice Rd

N Kings Rd

Westwood Northern Blvd

Montana Ave

264

Lawrence Rd

Werk Rd

Harrison Ave

Beckman St

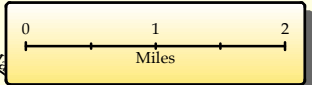
Legend

Schools

- ES (Red square)
- MS (Green triangle)
- HS (Blue star)
- ELC (Yellow circle)

2022-23 MS Boundaries

- Colerain (Green)
- Pleasant Run (Pink)
- White Oak (Blue)



Data sources: NWLSD, CAGIS, ESRI
Map created: SD, November 2022





Northwest Local School District, OH Middle School DRAFT Option 1

Butler County

4

Resor Rd

S Gilmore Rd

128

Pleasant Run MS

Colerain MS

Struble Rd

Mill Rd

Winthrop Rd

Kerrison Pike

275

Gaines Rd

27

Compton Rd

126

Hanley Rd

Pippin Rd

Daily Rd

Hamilton County

White Oak MS

W Fork Rd

Cleviot Rd

12

264

Rice Rd

N Kings Rd

Westwood Northern Blvd

Montana Ave

Lawrence Rd

Werk Rd

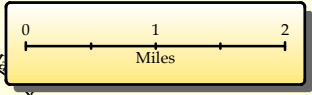
Harrison Ave

Beekman St

Vine St

Legend

- Schools
 - ES (Red square)
 - MS (Green triangle)
 - HS (Blue star)
 - ELC (Yellow circle)
- 2022-23 MS
 - Boundaries (Black outline)
 - Planning Blocks (Light yellow fill)
- MS Option 1 Zones
 - Colerain (Light green fill)
 - Pleasant Run (Light pink fill)
 - White Oak (Light blue fill)



Data sources: NWLSD, CAGIS, ESRI
Map created: SD, December 2022





Northwest Local School District, OH Middle School DRAFT Option 2

Butler County

4

Resor Rd

S Gilmore Rd

128

Pleasant Run MS

Colerain MS

Struble Rd

Mill Rd

Winthrop Rd

Kerrison Pike

275

Gaines Rd

27

Compton Rd

126

Hanley Rd

Pippin Rd

Daily Rd

Hamilton County

White Oak MS

W Fork Rd

Cleviot Rd

12

264

Rice Rd

N Kings Rd

Westwood Northern Blvd

Montana Ave

Lawrence Rd

Werk Rd

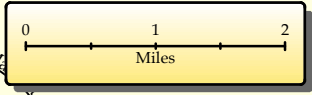
Harrison Ave

Beekman St

Vine St

Legend

- Schools
 - ES (Red square)
 - MS (Green triangle)
 - HS (Blue star)
 - ELC (Yellow circle)
- 2022-23 MS
 - Boundaries (Black outline)
 - Planning Blocks (Yellow outline)
- MS Option 2 Zones
 - Colerain (Green fill)
 - Pleasant Run (Pink fill)
 - White Oak (Blue fill)



Data sources: NWLSD, CAGIS, ESRI
Map created: SD, December 2022





Northwest Local School District, OH 2022-23 High School Zones

Butler County

4

Resor Rd

S Gilmore Rd

128

Colerain Ave

Northwest HS

Mill Rd

Struble Rd

Winthrop Rd

Kerrison Pike

275

Colerain HS

Compton Rd

126

Gaines Rd

Hanley Rd

Pippin Rd

Daily Rd

Hamilton County

W Fork Rd

Cleviot Rd

27

264

Rice Rd

N Kings Rd

Westwood Northern Blvd

Montana Ave

127

Lawrence Rd

Werk Rd

Beckman St

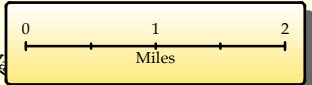
Legend

Schools

- ES ■
- MS ▲
- HS ★
- ELC ●

2022-23 HS Boundaries

- Colerain
- Northwest



Data sources: NWLSD, CAGIS, ESRI
Map created: SD, November 2022





Northwest Local School District, OH High School DRAFT Option 1

Butler County

4

Resor Rd

S Gilmore Rd

128

★ Northwest HS

Mill Rd

Struble Rd

Winop Rd

★ Colerain HS

Compton Rd

Kerrison Pike

275

126

Gaines Rd

Hanley Rd

Pippin Rd

Daily Rd

Hamilton County

74

27

W Fork Rd

Cleviot Rd

Legend

Schools

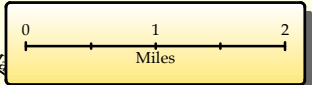
- ES (Red square)
- MS (Green triangle)
- HS (Blue star)
- ELC (Yellow circle)

2022-23 HS Boundaries

- Boundaries (Black outline)
- Planning Blocks (Yellow outline)

HS Option 1 Zones

- Colerain (Light green fill)
- Northwest (Light pink fill)



Data sources: NWLSD, CAGIS, ESRI
Map created: SD, December 2022



Lawrence Rd

Werk Rd

Rice Rd

N Kings Rd

Harrison Ave

Westwood Northern Blvd

Montana Ave

Beckman St

Vine St



Northwest Local School District, OH High School DRAFT Option 2

Butler County

4

Resor Rd

S Gilmore Rd

128

★ Northwest HS

Mill Rd

Struble Rd

Winthrop Rd

★ Colerain HS

Compton Rd

Kerrison Pike

Gaines Rd

Hanley Rd

126

Pippin Rd

Daily Rd

Hamilton County

W Fork Rd

Cleviot Rd

Rice Rd

N Kings Rd

Westwood Northern Blvd

Montana Ave

12

264

Lawrence Rd

Werk Rd

Beckman St

Vine St

Legend

Schools

- ES (Red square)
- MS (Green triangle)
- HS (Blue star)
- ELC (Yellow circle)

2022-23 HS Boundaries

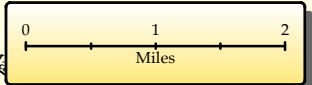
- Black outline

Planning Blocks

- White outline

HS Option 2 Zones

- Colerain (Light green fill)
- Northwest (Light pink fill)



Data sources: NWLSD, CAGIS, ESRI
Map created: SD, December 2022

