



Northwest Local School District, OH Fall 2022 Redistricting Study

Background Report

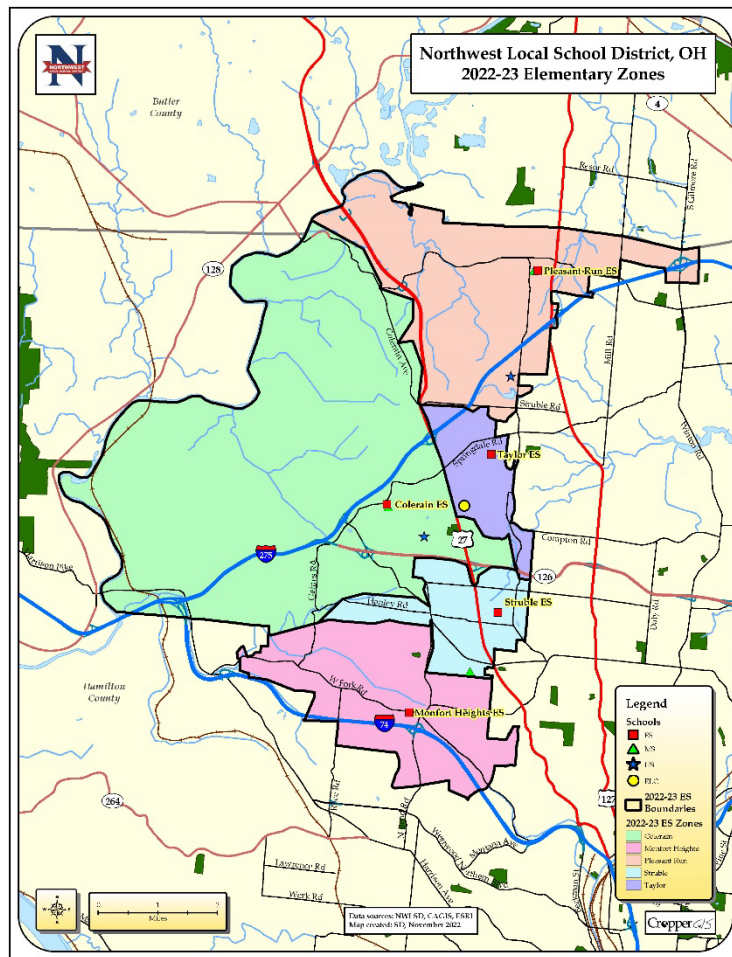




Table of Contents

Table of Contents	
Background and Key Objectives	1
Student Redistricting Study Criteria	1
Student Redistricting Study Process	2
Phase 1. Data Collection	2
Phase 2. Data Analysis / Assimilation	2
Phase 3. Options Development	2
Phase 4. Internal Planning Team and Public Engagement	2
Stakeholder Responsibilities	3
Study Timeline	4
Map Analysis	
Mapping Conventions	5
Series 1: Current Zone Mapping	6
Series 2: Live-Attend Mapping	7
Online Mapping	8
Appendices	
Appendix A: Live-Attend Analysis	9
Appendix B: Live-Attend Maps	12
Appendix C: Enrollment and Utilization	27

Background and Key Objectives

With the support of the Board of Education, the Northwest Local School District is undertaking a redistricting study to address imbalances in school utilization and enrollment, and to pro-actively align with future facility plans. The Northwest Local School District has begun a redistricting study to meet the following key objectives:

- **Primary Objective:** To relieve immediate overcrowding at elementary schools and balance school utilization, with boundary changes made effective Fall 2023. Middle and High School boundaries could also be adjusted to best align with feeder patterns.
- **Secondary Objectives:** To make best efforts to ensure that Fall 2023 boundary changes align with long-term facilities and feeder patterns. Facility changes that have been identified include:
 - New Colerain Elementary School
 - New Colerain Middle School
 - New Pleasant Run Middle School
 - Discontinue use of White Oak Middle School

This background report was prepared to inform the internal planning team called together to lead this study. This report will inform team members in two ways:

1. It will expand the extensive knowledge each team member already has of Northwest Local School District.
2. It will help team members share a message with the community that is consistent and accurate.

Northwest Local School District contracted Cropper GIS to facilitate this study. Cropper GIS has significant experience facilitating community-based zone studies, having assisted school districts of all sizes in Maryland, Virginia, Georgia, Illinois, Indiana, Ohio, New York and many other states.

The “GIS” in Cropper GIS stands for “geographic information systems.” Geographic information systems consist of people, computer hardware and software. GIS is designed to store, analyze and output geographic data to support decision making. Maps are the most common GIS output. Because school attendance zones are geographic in nature, GIS is a powerful tool promoting efficient and effective decision making when conducting zone studies.

Student Redistricting Study Criteria

Cropper GIS has developed a body of criteria to guide this student redistricting study. The following criteria are not listed in any order of importance and the recommended plan will be one that best adheres to these criteria as a whole as best as possible:

- **Balance school facility utilization** – Make every effort to have equitable utilization (where possible) across the district and in accordance with school capacities and funded allotment ratios in accordance with state law. Make efficient use of available space.
- **Account for future growth** – Allow for increasing attendance in high growth areas.
- **Close Proximity** – Students should be assigned to the school within the closest proximity to their homes where possible.
- **Maximize busing efficiencies in transportation of students** – Make every effort to account for transportation (school bus and car rider), parent commuting patterns, balance busing travel time, and costs.
- **Establish clear feeder patterns and continuity** – Make every effort to establish a clear feeder pattern system.
- **Allow for highest-grade at current school to legacy enroll** – Allow for students who will be in the 5th, or 8th grades in the first school year of redistricting to stay at their current school, however, transportation will not be provided for these students.
- **Minimize impact on students** – Attempt to minimize the number of students impacted when making boundary adjustments.
- **Consider economic, cultural, and ethnic diversity** – Ensure schools are inclusionary and not adversely affected by redistricting decisions.
- **Make every effort to establish contiguous zones** – Avoid creating zones that are not connected to the primary attendance zone, where possible.
- **Use major roads and natural boundaries wherever feasible to define attendance zones** – Minimize the number of students who need to cross major intersections and other barriers to maximize the safety and security of students and optimize transportation efficiency by containing bus routes within natural boundaries wherever possible to avoid traffic delays and late arrivals.

Student Redistricting Study Process

While the rationale behind the student redistricting study process is presented in the Background section, it is important to reiterate that:

- This process is driven by a team of experts within the district but with extensive public participation.
- The process will be facilitated by an outside consultant.
- NWLSD staff will provide data and technical support to the internal planning team.
- Multiple forms of communication will be incorporated into the process.

This study has four phases:

- Phase 1. Data Collection
- Phase 2. Data Analysis / Assimilation
- Phase 3. Options Development
- Phase 4. Internal Planning Team and Public Engagement

Phase 1. Data Collection

Data availability and quality are central to this student redistricting study. Fortunately, Northwest Local School District and Hamilton County GIS/planning offices have provided a comprehensive collection of system, city, and county data, including:

- A wide array of GIS data;
- Student enrollment data (historic and current);
- Current & planned school facility data;
- Pertinent System policies and procedures.

Data collection efforts have been underway through the fall, and information will continue to be collected throughout the process if it is deemed useful. As the study proceeds, internal planning team members will provide additional information as they bring their experience and expertise to their work. At the public input meetings and via the community survey that will follow, public input will provide valuable data. Finally, NWLSD and Cropper GIS staff will provide data to the internal planning team upon request throughout the life of the study.

Phase 2. Data Analysis / Assimilation

Once data is collected, it is necessary to integrate it into GIS to enable quick and efficient analysis and options development. Data assimilation was completed quickly and efficiently because NWLSD already had some of the data in usable GIS formats. For example, NWLSD already had attendance zones developed in GIS format.

Phase 3. Options Development

To expedite the process and empower the internal planning team, the best approach is to begin with a series of baseline redistricting options. These options will be developed with the redistricting criteria in mind. Baseline options will be shared with the internal planning team during their second meeting. Once the options are presented the planning team may:

- Use or disregard the baseline options.
- Improve upon the baseline options.
- Develop new options from scratch.

Phase 4. Internal Planning Team and Public Engagement

Noted in the timeline on page 4, the internal planning team will meet from November 2022 through February 2023 to analyze data, review attendance zones, and develop zone options. At a December public information session, the work of the team will be shared, and community members will have an opportunity to discuss planning team work with staff and planning team members. Valuable information will also be gathered via a community survey that will take place after the information session. School Board action is expected to take place in February 2023.



Stakeholder Responsibilities

NWLSLSD seeks planning team and community engagement to achieve the key student redistricting study objectives. The table below describes the roles and responsibilities of the stakeholders that will be involved in the student redistricting study.

Outline of Stakeholder Responsibilities	
Consultant	<ul style="list-style-type: none"> • Schedule and facilitate internal planning team meetings. • Communicate updates with planning team, including updated handout and meeting schedule logistics. • Conduct public meetings to solicit feedback related to draft options that are under consideration. • Support the district in providing materials such as presentations, handouts, and online interactive maps for the public’s consumption. • Coordinate and summarize online feedback received from general public and internal planning team.
Internal Planning Team	<ul style="list-style-type: none"> • Consists of key school district administrators including central office, transportation, planning, and school principals. • Group will work to review draft options that are being developed in preparation to share with the School Board and public. • Review input provided from the consultant and general public regarding draft options and continue to modify maps with a focus on the best solution for all students as a whole. • Recommend a redistricting plan to the School Board
General Public	<ul style="list-style-type: none"> • Informed through website. • Invited to submit comments and input throughout the entire process.. • Invited to participate in public information sessions (both virtual and in-person), and to provide input via surveys and online general feedback form.
School Board	<ul style="list-style-type: none"> • Charge internal planning team with its responsibilities. • Identify questions the planning team is expected to answer. • Advise staff and the process regarding policy related considerations and other board-level decisions • Vote and approve a redistricting plan



Study Timeline

The following page presents the study timeline. The timeline places a significant time commitment on student redistricting study internal planning team members from October 2022 through February 2023. Internal planning team members are expected to:

- Meet at least four times throughout the duration of the study to analyze attendance zone options.
- Help facilitate two public information sessions by answering questions that the public may have about maps and statistics.

Process & Timeline for Redistricting

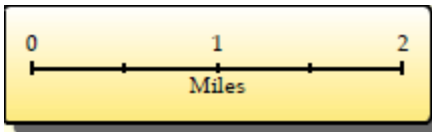
	Oct. '22	Nov. '22	Dec. '22	Jan. '23	Feb. '23
<i>Data Collection</i>					
<i>Data Analysis / Assimilation</i>					
<i>Baseline Options Development</i>					
<i>Internal Planning Team Work (1-2 meetings per month)</i>		11/10, 11/29	12/7	1/10	
Public Information Session #1 : Present Project Process, Criteria, Timeline, and Redistricting Objectives to Community. Web-based meeting.		11/17			
Public Information Session #2: Present DRAFT Redistricting Options to General Public for Comment/Feedback. On-site meeting (or virtual if preferred) to review options and q/a at end of session.			12/13		
<i>Presentation of Final Recommendations to the Board of Education</i>					
<i>Board of Education Votes on Redistricting Plan</i>					

Map Analysis

Maps provide the opportunity to examine physical and social geography and to discover relationships between places. Maps are included in Appendix B and are given brief analysis here. While this analysis is helpful, each planning team member is urged to closely analyze these maps and share their analysis with other planning team members. The local knowledge and personal insight that each planning team member brings to map analysis will add valuable perspective to this study.

Mapping Conventions

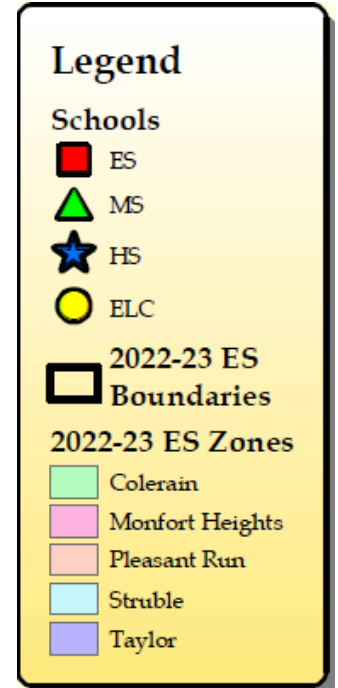
When analyzing the maps in Appendix B, keep in mind these common mapping conventions used in each map.



Each map will include a graphic scale bar to indicate distance between features. A graphic scale bar is very helpful to readers who download the background report and use a “zoom” function to examine a small area of a map in detail. Each map will also contain a North Arrow that will help the map viewers determine the direction.



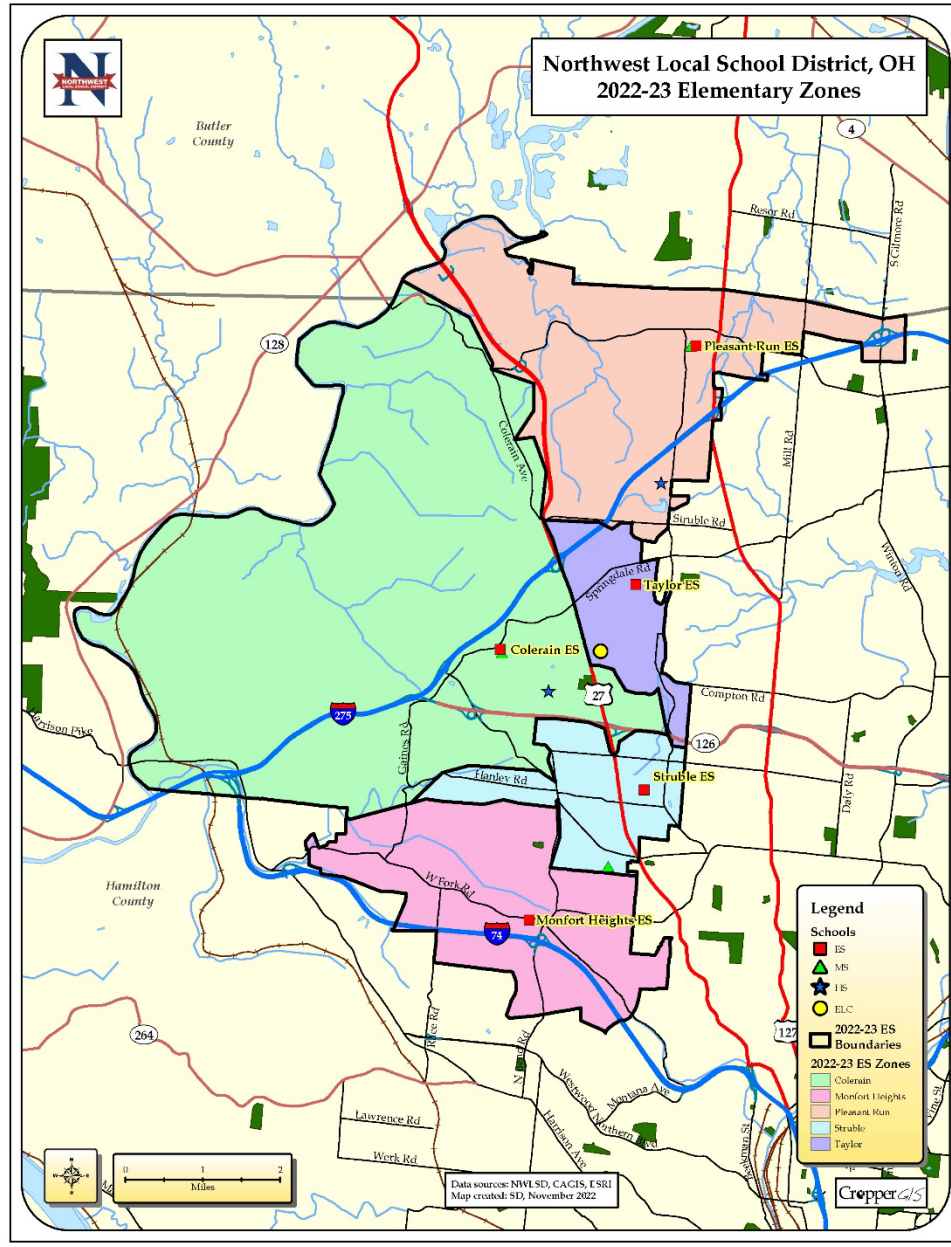
Each map has a legend showing common symbology used in all maps and, sometimes, symbology unique to a single map. Common symbols are used for schools. Squares are elementary schools (red, in color copies). Triangles are middle schools (green, in color copies). Stars are high schools (blue, in color copies). In addition to school location symbology, the legend also shows the color of each individual zone in the map.



Series 1: Current Zone Mapping

Northwest Local School District, OH, Elementary School Attendance Zones 2022-23

The image below depicts the current 2022-23 Northwest Local School District Elementary School Zones. Detailed maps for each grade cohort may be found in Appendix B.



Series 2: Live-Attend Mapping

Northwest Local School District, OH, 2022-23 Pleasant Run Elementary Live-Attend Analysis

Map Series 2, located in Appendix B, shows each elementary zone within the Northwest Local School District along with tables that describe the Live-Attend statistics of each school’s student population. Here is an example guide for reading these tables:

Pleasant Run ES	
Total Enrollment (K-5)	926
Out of District	15
Unmatched	0
Total Live-In (K-5)	913
Live and Attend In	893
Live Out, Attend In	33
Live In, Attend Out	20

Total Enrollment (K-5th) – number of K-5th students attending Pleasant Run ES.

Out of District – number of students who live outside of the Northwest Local School District, yet attend this school.

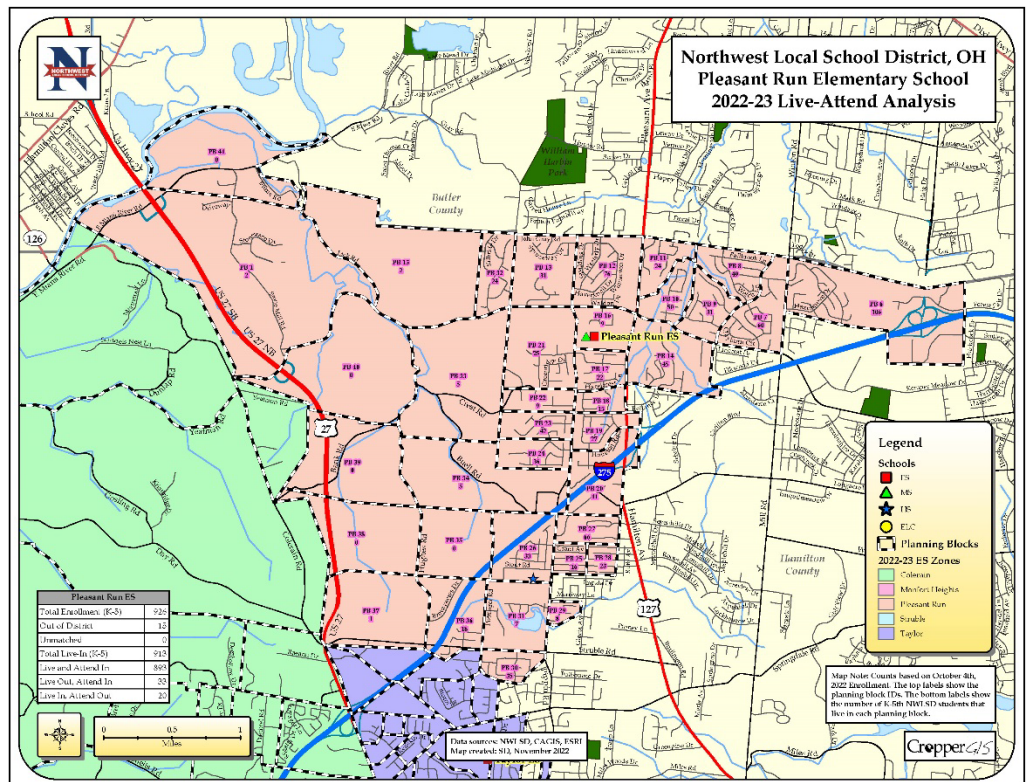
Total Live-In – number of students who live within the school’s attendance zone, who are in the same grade cohort as the school. The grade cohort can change from school to school, depending on the population served. In this case, Pleasant Run ES enrolls K through 5th grade students. Therefore, the ‘total-live in’ statistic here indicates there are 913 K-5th grade students living within the Pleasant Run elementary attendance boundary.

Live and Attend-In – number of students (K-5th grade) who live within the attendance zone, and also attend that school. In this example, 893 of 913 K-5th grade students who live within the Pleasant Run ES attendance zone also attend Pleasant Run ES.

Live-Out, Attend-In – number of K-5th grade students who live outside of the Pleasant Run ES attendance zone, but attend Pleasant Run ES.

Live-In, Attend-Out – number of K-5th grade students who live inside the Pleasant Run ES attendance zone, yet attend a different elementary school.

The labels in the planning blocks depict both the planning block ID number (on top) and the number of K-5th grade students that live in the planning block (bottom).



Online Mapping

In addition to the physical printed maps, Cropper GIS has also created an interactive online map service. This map service is available at:

<http://croppermap.com/nwlsd>

Below are the basic components of this online mapping service for the Northwest Local School District:

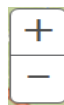
1. **Menu Options** Use these menus to interact with the map.

- **View School Zones:** Use this menu to choose which school zone map to view.
- **Zoom to School Zones:** Use this menu to zoom to a school zone.
- **Legend:** This shows the active layers that are turned on within the map.
- **Print:** Use this menu to format and print a map with a title.


2. **Find Address:** Use this to search for an address and to determine school options.



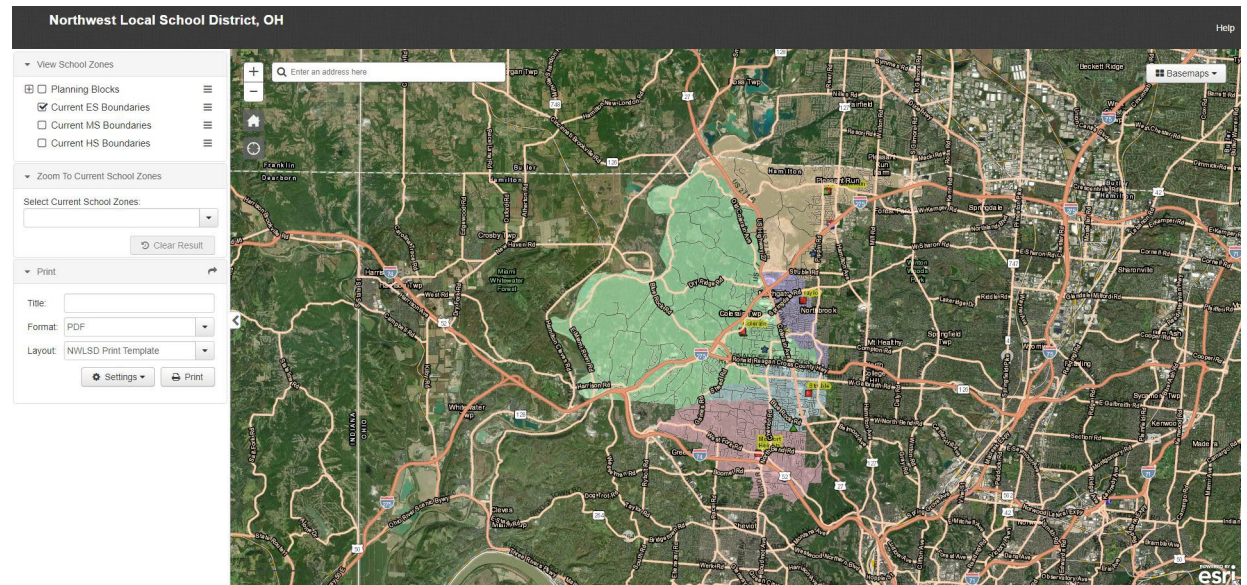
3. **Map Navigation:** This is used to zoom in & out. If your mouse has a scroll wheel this will also zoom in and out. If you click on the map screen and drag the mouse it will pan the map.



4. **Basemaps:** Use this dropdown list to determine which basemap to have on in the background.

5. **Home Button:** Click  on this button to zoom the map out to the district's full extent.

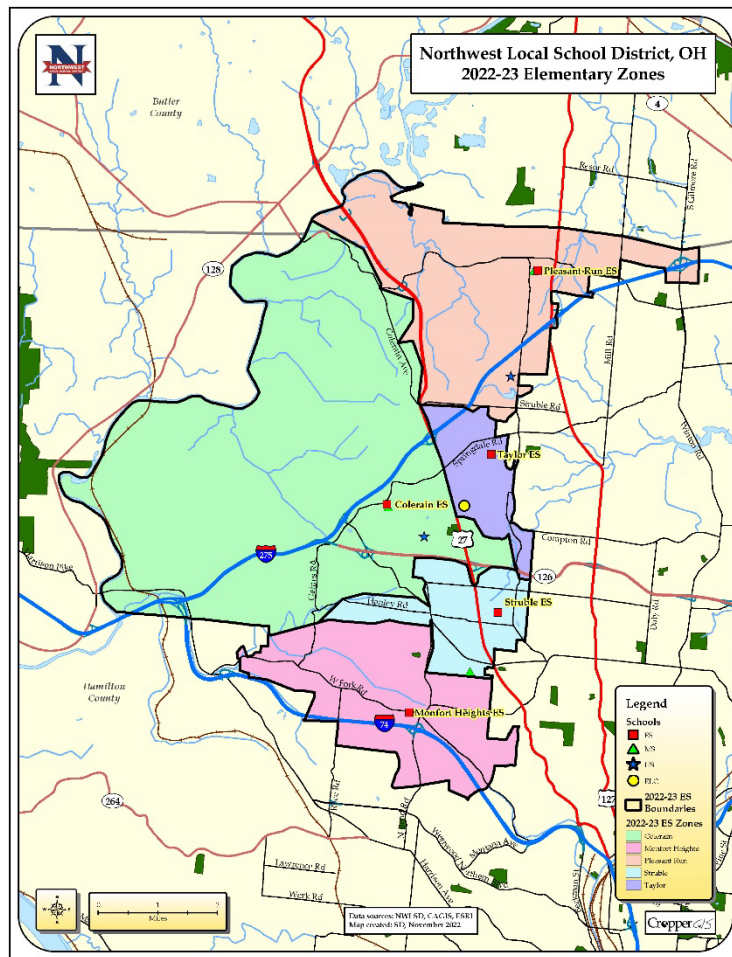
6. **GPS Location:** Click on this  to determine your current location.





Northwest Local School District, OH Fall 2022 Redistricting Study

Appendix A: Live-Attend Analysis



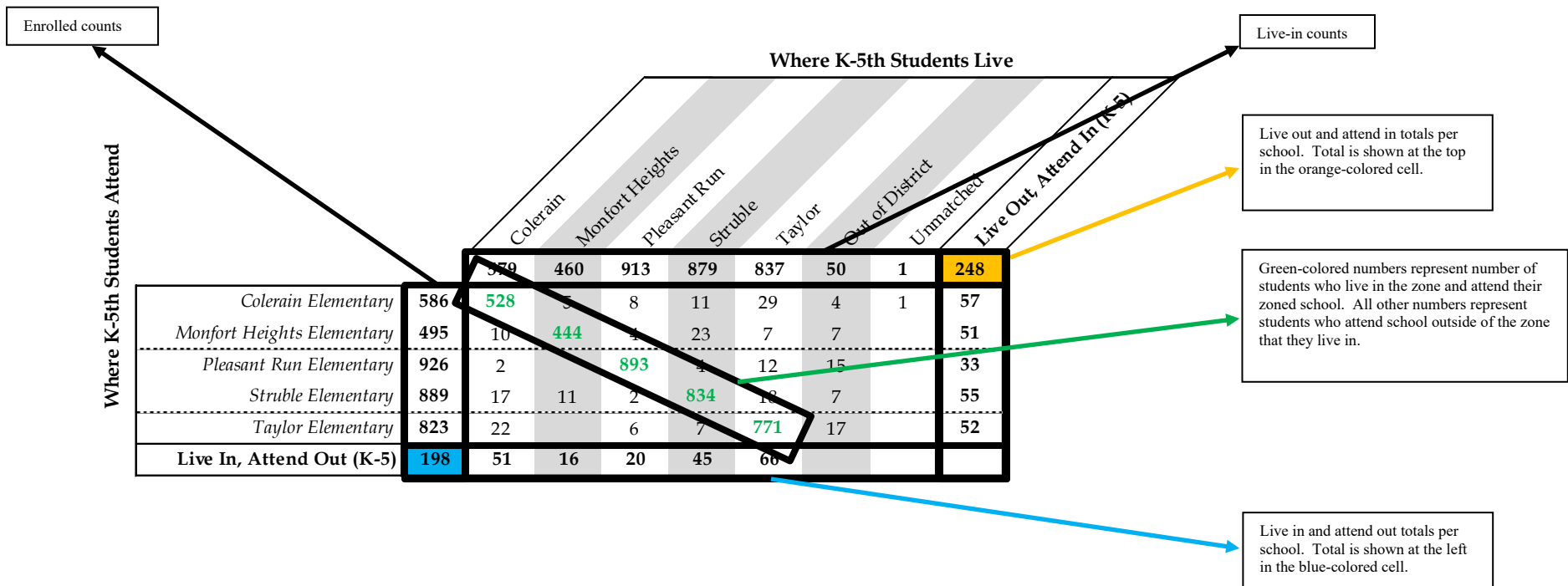


Appendix A: Live-Attend Analysis

Live Attend Matrix

The following tables display where students live and attend relative to school zones. The schools of attendance are listed on the left while the zones are listed on the top. This student data is from the Northwest Local School District student database, dated October 4, 2022.

The first column of numbers to the right of the schools of attendance represents the number of students enrolled at each given school. The first row of numbers below the zones represents the total number of students living inside of each given zone. The green-colored numbers represent number of students who attend the school of the zone in which they live. All other numbers represent students who attend school outside of the zone in which they live. The bottom row represents the number of students that “Live-In and Attend-Out” by school. The blue-colored cell shows the total number of students that “Live-in and Attend-Out”. The farthest right column represents the number of students that “Live-Out and Attend-In” by school. The orange-colored cell shows the total number of students that “Live-Out and Attend-In”.





Where K-5th Students Live

		Where K-5th Students Live							248	
		Colerain	Monfort Heights	Pleasant Run	Struble	Taylor	Out of District	Unmatched		
Where K-5th Students Attend	<i>Colerain Elementary</i>	586	528	5	8	11	29	4	1	57
	<i>Monfort Heights Elementary</i>	495	10	444	4	23	7	7		51
	<i>Pleasant Run Elementary</i>	926	2		893	4	12	15		33
	<i>Struble Elementary</i>	889	17	11	2	834	18	7		55
	<i>Taylor Elementary</i>	823	22		6	7	771	17		52
	Live In, Attend Out (K-5)	198	51	16	20	45	66			

Where 6-8th Students Live

		Where 6-8th Students Live					110	
		Colerain	Pleasant Run	White Oak	Out of District	Unmatched		
Where 6-8th Students Attend	<i>Colerain Middle School</i>	586	538	19	23	6		48
	<i>Pleasant Run Middle School</i>	705	14	672	4	15		33
	<i>White Oak Middle School</i>	729	14	7	700	8		29
	Live In, Attend Out (6-8)	81	28	26	27			

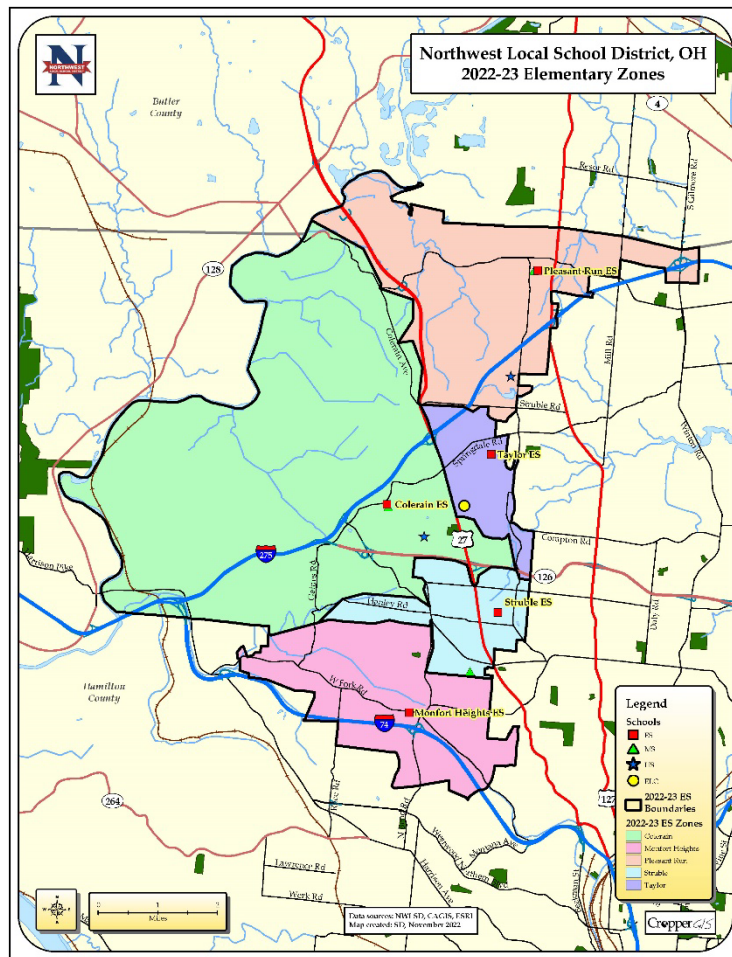
Where 9-12th Students Live

		Where 9-12th Students Live				124	
		Colerain	Northwest	Out of District	Unmatched		
Where 9-12th Students Attend	<i>Colerain High School</i>	1,857	1,777	60	20	80	
	<i>Northwest High School</i>	967	26	922	18	1	44
	Live In, Attend Out (9-12)	86	26	60			



Northwest Local School District, OH Fall 2022 Redistricting Study

Appendix B: Live-Attend Maps





Northwest Local School District, OH 2022-23 Elementary Zones

Butler County

4

Resor Rd

S Gilmore Rd

128

Pleasant-Run ES

Colerain Ave

Mill Rd

Struble Rd

Springdale Rd

Taylor ES

Colerain ES

27

Compton Rd

126

Struble ES

Kerrison Pike

275

Gaines Rd

Hanley Rd

Daily Rd

Hamilton County

W Fork Rd

Monfort Heights ES

127

264

Rice Rd

N Kings Rd

Westwood Northern Blvd

Montana Ave

Lawrence Rd

Werk Rd

Harrison Ave

Beckman St

Vine St

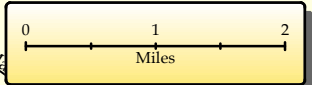
Legend

Schools

- ES
- MS
- HS
- ELC

2022-23 ES Boundaries

- Colerain
- Monfort Heights
- Pleasant Run
- Struble
- Taylor



Data sources: NWLSD, CAGIS, ESRI
Map created: SD, November 2022





Northwest Local School District, OH 2022-23 Middle School Zones

Butler County

4

Resor Rd

S Gilmore Rd

128

Pleasant Run MS

Colerain Ave

Mill Rd

Struble Rd

Winop Rd

Colerain MS

27

Compton Rd

Kerrison Pike

275

Gaines Rd

126

Daily Rd

Hamilton County

White Oak MS

Hanley Rd

Pippin Rd

W Fork Rd

Cleviot Rd

127

264

Rice Rd

N Kings Rd

Westwood Northern Blvd

Lawrence Rd

Werk Rd

Harrison Ave

Montana Ave

Beckman St

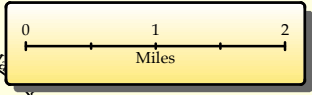
Legend

Schools

- ES (Red square)
- MS (Green triangle)
- HS (Blue star)
- ELC (Yellow circle)

2022-23 MS Boundaries

- Colerain (Green area)
- Pleasant Run (Pink area)
- White Oak (Blue area)



Data sources: NWLSD, CAGIS, ESRI
Map created: SD, November 2022





Northwest Local School District, OH 2022-23 High School Zones

Butler County

4

Resor Rd

S Gilmore Rd

128

Colerain Ave

Northwest HS

Mill Rd

Struble Rd

Winthrop Rd

Kerrison Pike

275

Colerain HS

Compton Rd

126

Gaines Rd

Hanley Rd

Pippin Rd

Daily Rd

Hamilton County

W Fork Rd

74

27

Rice Rd

N Kings Rd

Westwood Northern Blvd

Montana Ave

127

Lawrence Rd

Werk Rd

Harrison Ave

Beckman St

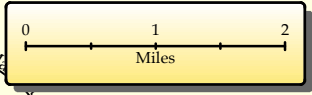
Legend

Schools

- ES ■
- MS ▲
- HS ★
- ELC ●

2022-23 HS Boundaries

- Colerain
- Northwest



Data sources: NWLSD, CAGIS, ESRI
Map created: SD, November 2022



Northwest Local School District, OH Colerain Elementary School 2022-23 Live-Attend Analysis



Colerain ES	
Total Enrollment (K-5)	586
Out of District	4
Unmatched	1
Total Live-In (K-5)	579
Live and Attend In	528
Live Out, Attend In	57
Live In, Attend Out	51

Legend

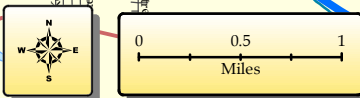
Schools

- ES (Red square)
- MS (Green triangle)
- HS (Blue star)
- ELC (Yellow circle)
- Planning Blocks (Black dashed line)

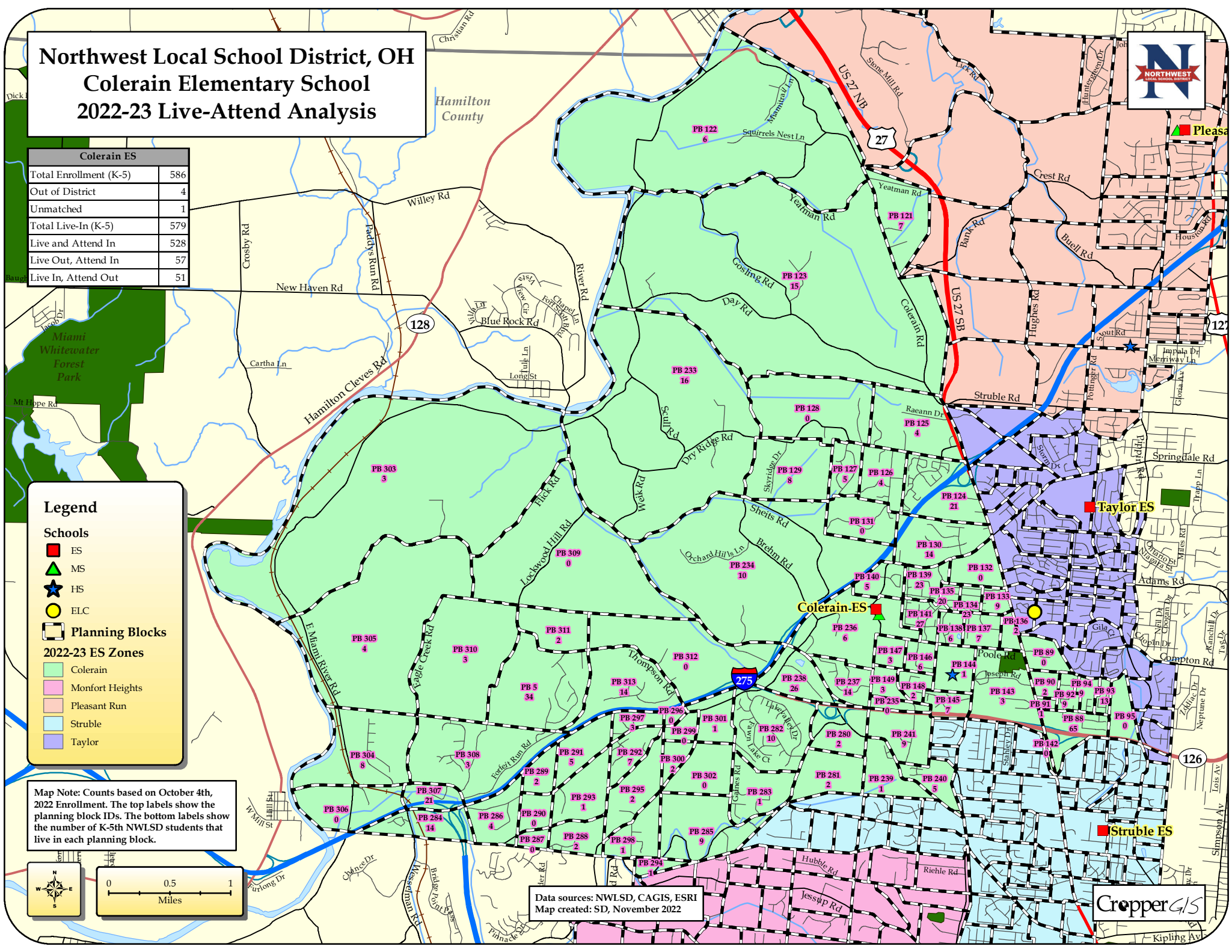
2022-23 ES Zones

- Colerain (Light green)
- Monfort Heights (Pink)
- Pleasant Run (Light orange)
- Struble (Light blue)
- Taylor (Purple)

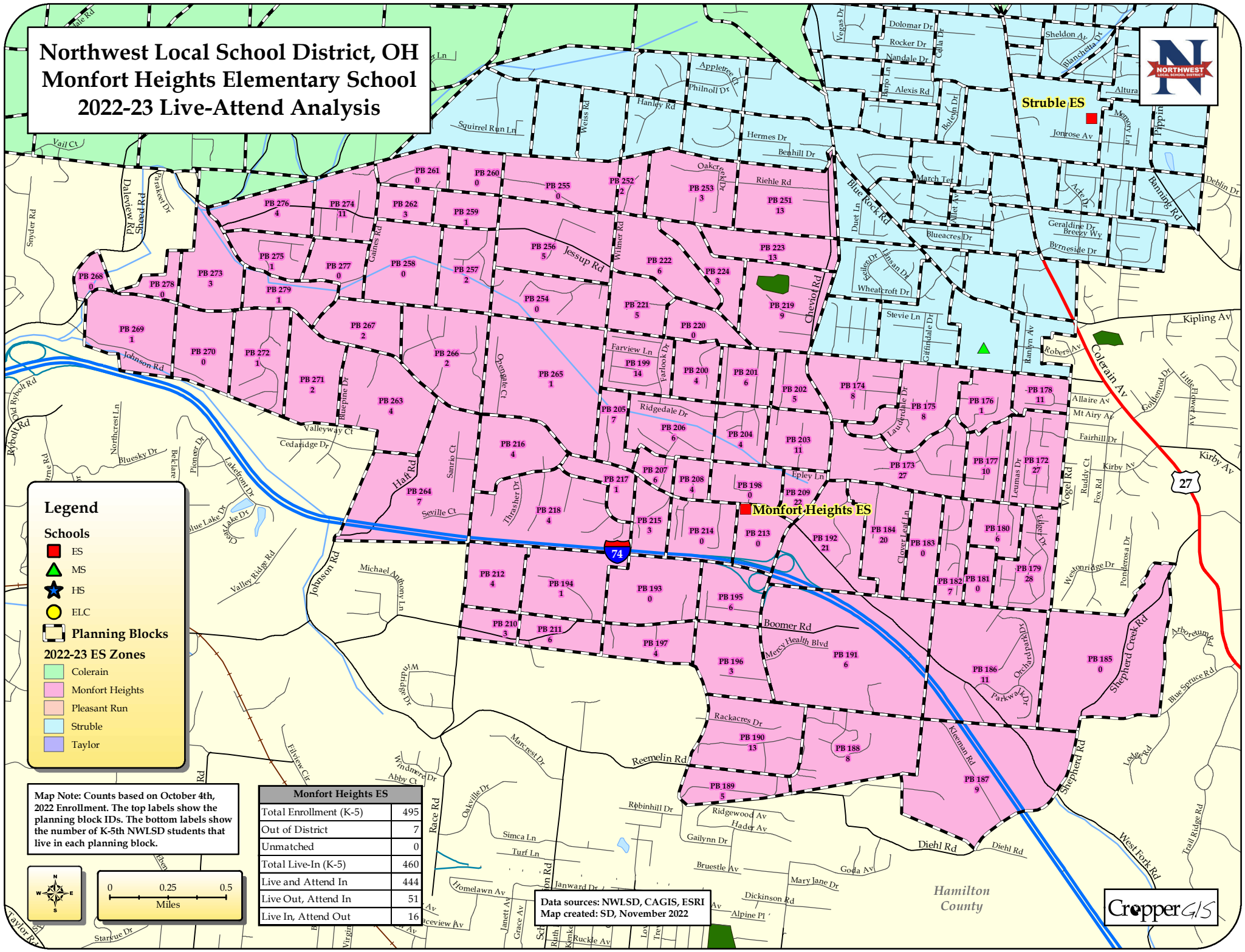
Map Note: Counts based on October 4th, 2022 Enrollment. The top labels show the planning block IDs. The bottom labels show the number of K-5th NWLSD students that live in each planning block.



Data sources: NWLSD, CAGIS, ESRI
Map created: SD, November 2022



Northwest Local School District, OH Monfort Heights Elementary School 2022-23 Live-Attend Analysis



Legend

Schools

- ES
- ▲ MS
- ★ HS
- ELC
- Planning Blocks

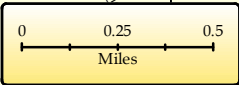
2022-23 ES Zones

- Colerain
- Monfort Heights
- Pleasant Run
- Struble
- Taylor

Map Note: Counts based on October 4th, 2022 Enrollment. The top labels show the planning block IDs. The bottom labels show the number of K-5th NWLSD students that live in each planning block.

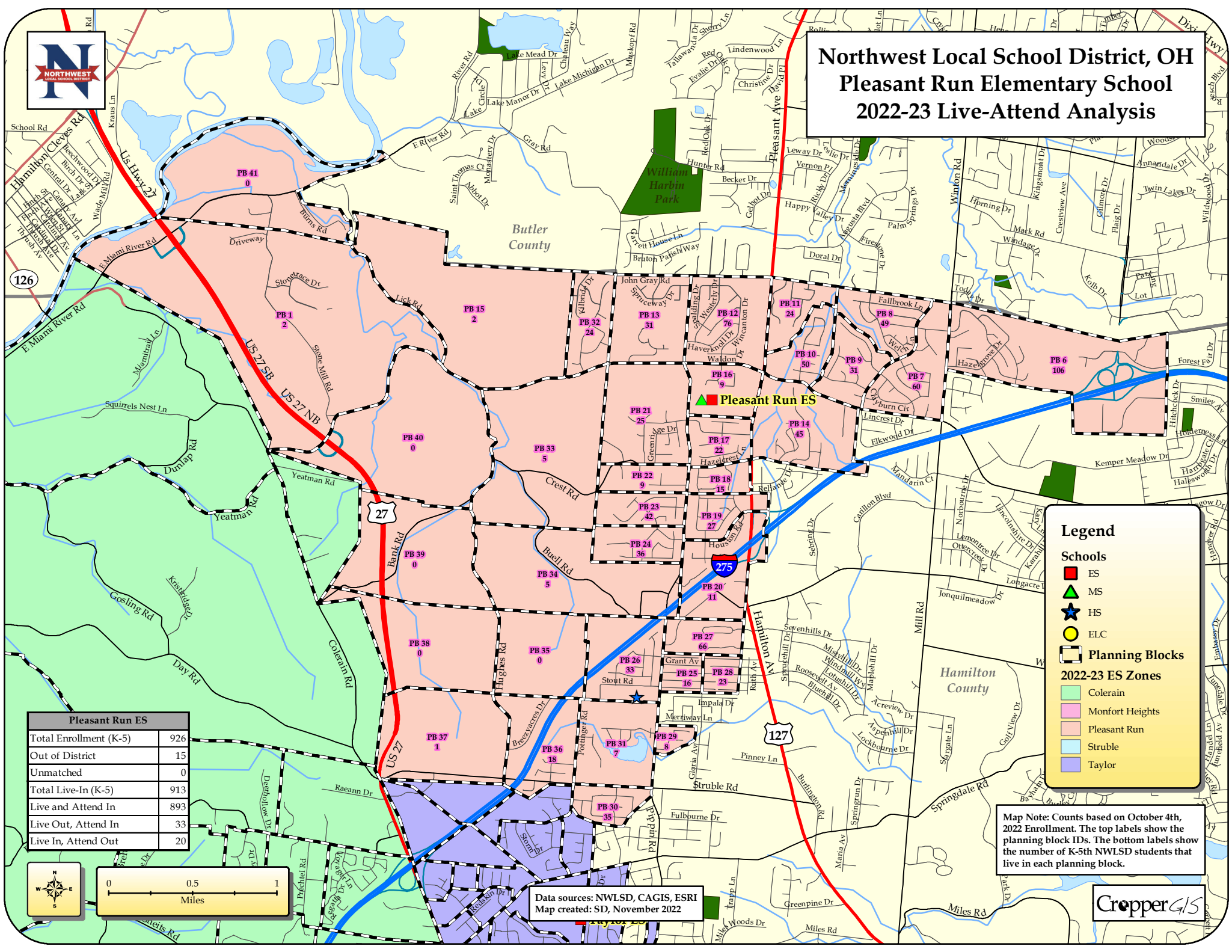
Monfort Heights ES	
Total Enrollment (K-5)	495
Out of District	7
Unmatched	0
Total Live-In (K-5)	460
Live and Attend In	444
Live Out, Attend In	51
Live In, Attend Out	16

Data sources: NWLSD, CAGIS, ESRI
Map created: SD, November 2022





Northwest Local School District, OH Pleasant Run Elementary School 2022-23 Live-Attend Analysis



Pleasant Run ES	
Total Enrollment (K-5)	926
Out of District	15
Unmatched	0
Total Live-In (K-5)	913
Live and Attend In	893
Live Out, Attend In	33
Live In, Attend Out	20

Legend

Schools

- ES (Red square)
- MS (Green triangle)
- HS (Blue star)
- ELC (Yellow circle)

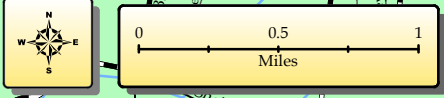
Planning Blocks

2022-23 ES Zones

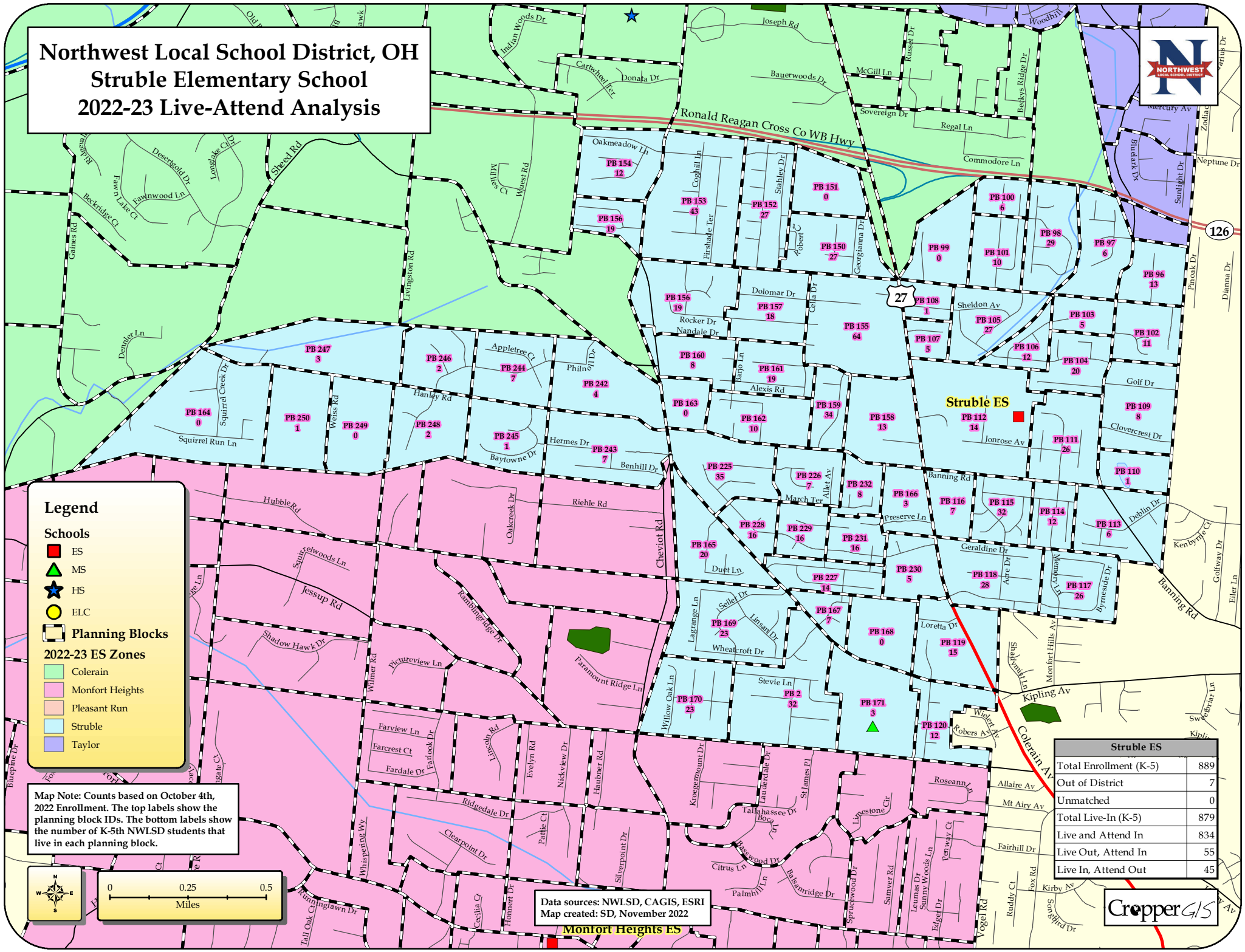
- Colerain (Light green)
- Monfort Heights (Light pink)
- Pleasant Run (Light blue)
- Struble (Light purple)
- Taylor (Light yellow)

Map Note: Counts based on October 4th, 2022 Enrollment. The top labels show the planning block IDs. The bottom labels show the number of K-5th NWLSD students that live in each planning block.

Data sources: NWLSD, CAGIS, ESRI
Map created: SD, November 2022



Northwest Local School District, OH Struble Elementary School 2022-23 Live-Attend Analysis



Legend

Schools

- ES (Red square)
- MS (Green triangle)
- HS (Blue star)
- ELC (Yellow circle)

Planning Blocks

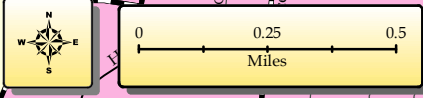
2022-23 ES Zones

- Colerain (Green)
- Monfort Heights (Pink)
- Pleasant Run (Orange)
- Struble (Light Blue)
- Taylor (Purple)

Map Note: Counts based on October 4th, 2022 Enrollment. The top labels show the planning block IDs. The bottom labels show the number of K-5th NWLSD students that live in each planning block.

Struble ES	
Total Enrollment (K-5)	889
Out of District	7
Unmatched	0
Total Live-In (K-5)	879
Live and Attend In	834
Live Out, Attend In	55
Live In, Attend Out	45

Data sources: NWLSD, CAGIS, ESRI
Map created: SD, November 2022





Northwest Local School District, OH

Taylor Elementary School

2022-23 Live-Attend Analysis

Taylor ES	
Total Enrollment (K-5)	823
Out of District	17
Unmatched	0
Total Live-In (K-5)	837
Live and Attend In	771
Live Out, Attend In	52
Live In, Attend Out	66

Legend

Schools

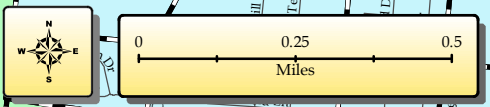
- ES (Red square)
- MS (Green triangle)
- HS (Blue star)
- ELC (Yellow circle)

Planning Blocks

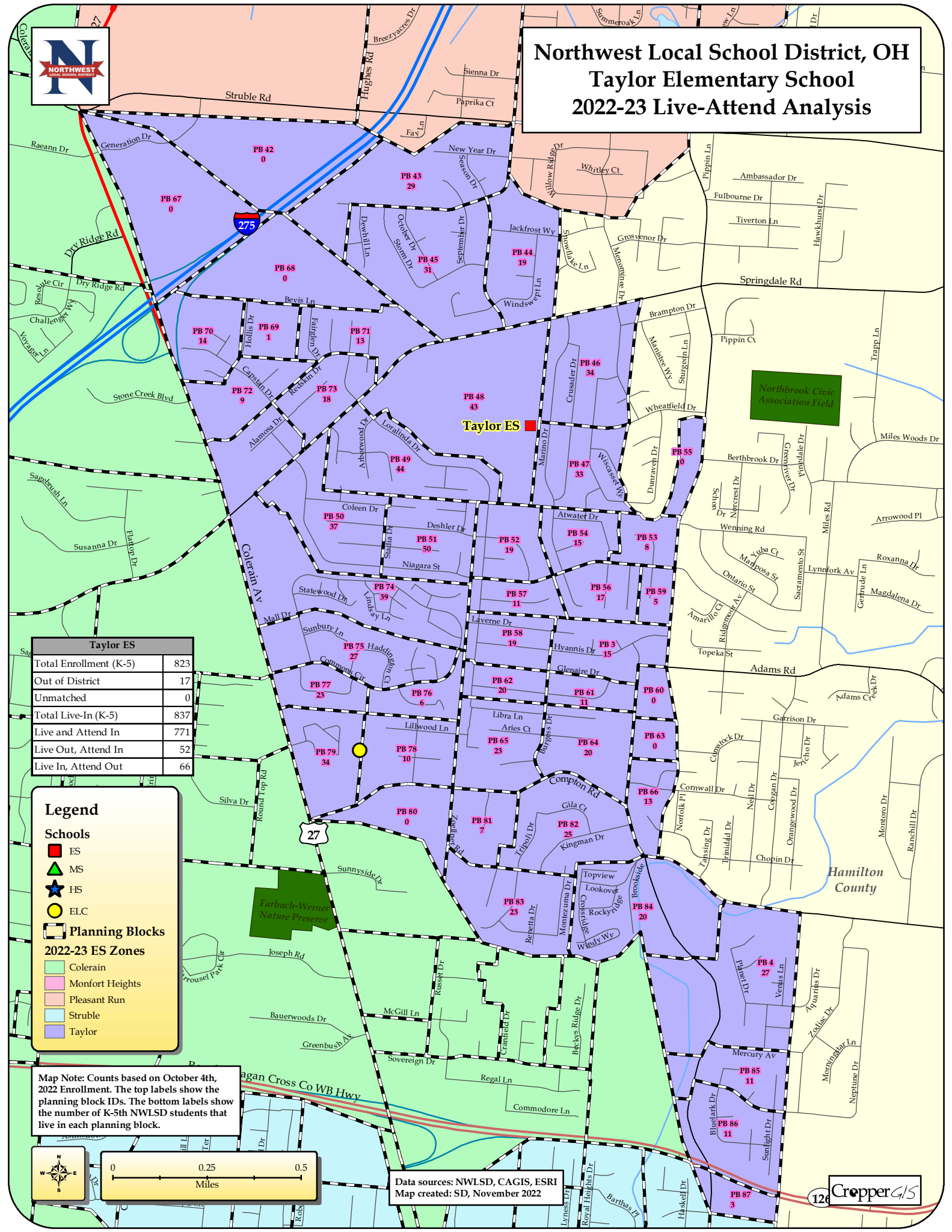
2022-23 ES Zones

- Colerain (Light green)
- Monfort Heights (Pink)
- Pleasant Run (Light blue)
- Struble (Light purple)
- Taylor (Purple)

Map Note: Counts based on October 4th, 2022 Enrollment. The top labels show the planning block IDs. The bottom labels show the number of K-5th NWLSD students that live in each planning block.



Data sources: NWLSD, CAGIS, ESRI
Map created: SD, November 2022



Northwest Local School District, OH Colerain Middle School 2022-23 Live-Attend Analysis



Colerain MS	
Total Enrollment (6-8)	586
Out of District	6
Unmatched	0
Total Live-In (6-8)	566
Live and Attend In	538
Live Out, Attend In	48
Live In, Attend Out	28

Legend

Schools

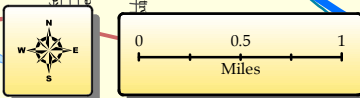
- ES (Red square)
- MS (Green triangle)
- HS (Blue star)
- ELC (Yellow circle)

Planning Blocks

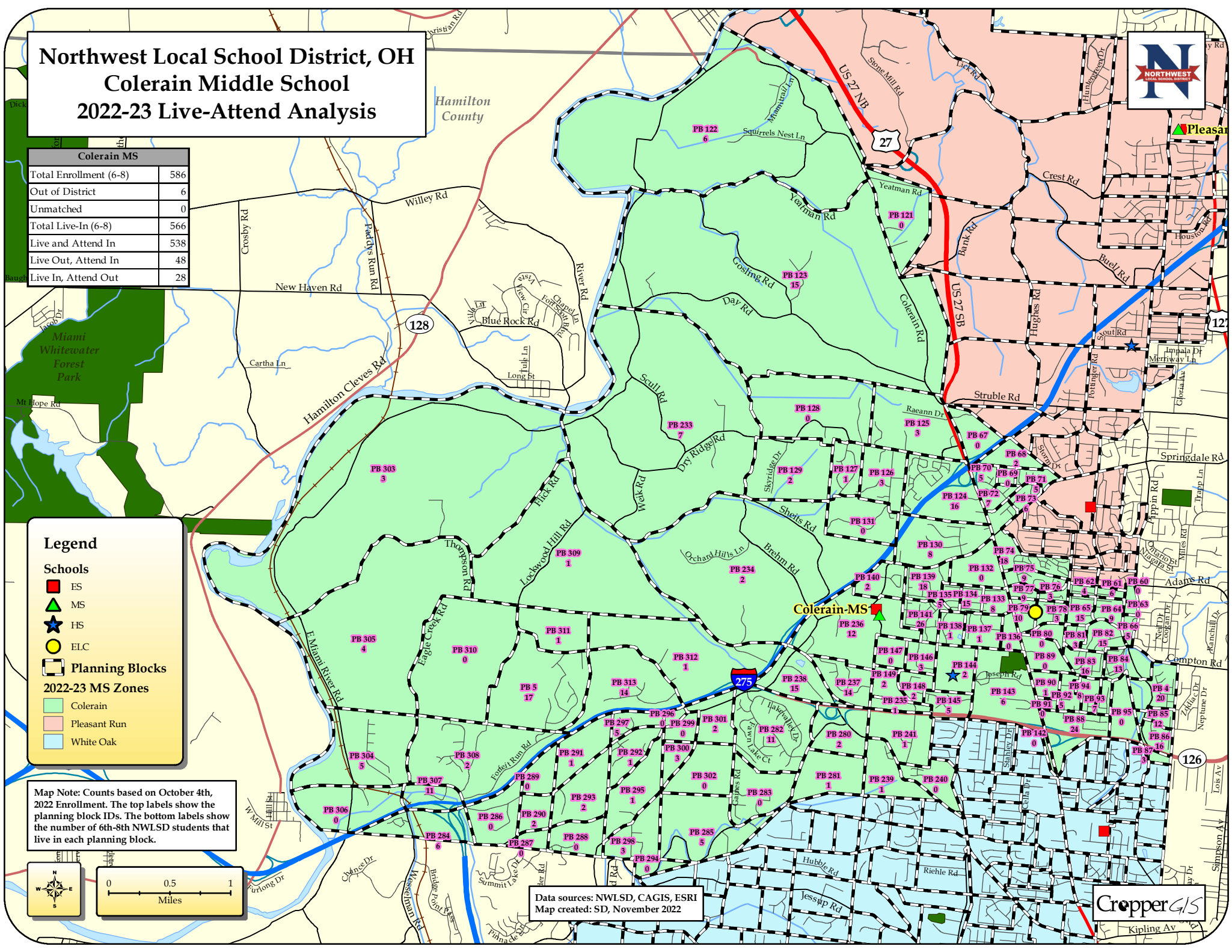
2022-23 MS Zones

- Colerain (Light green)
- Pleasant Run (Light pink)
- White Oak (Light blue)

Map Note: Counts based on October 4th, 2022 Enrollment. The top labels show the planning block IDs. The bottom labels show the number of 6th-8th NWLSD students that live in each planning block.

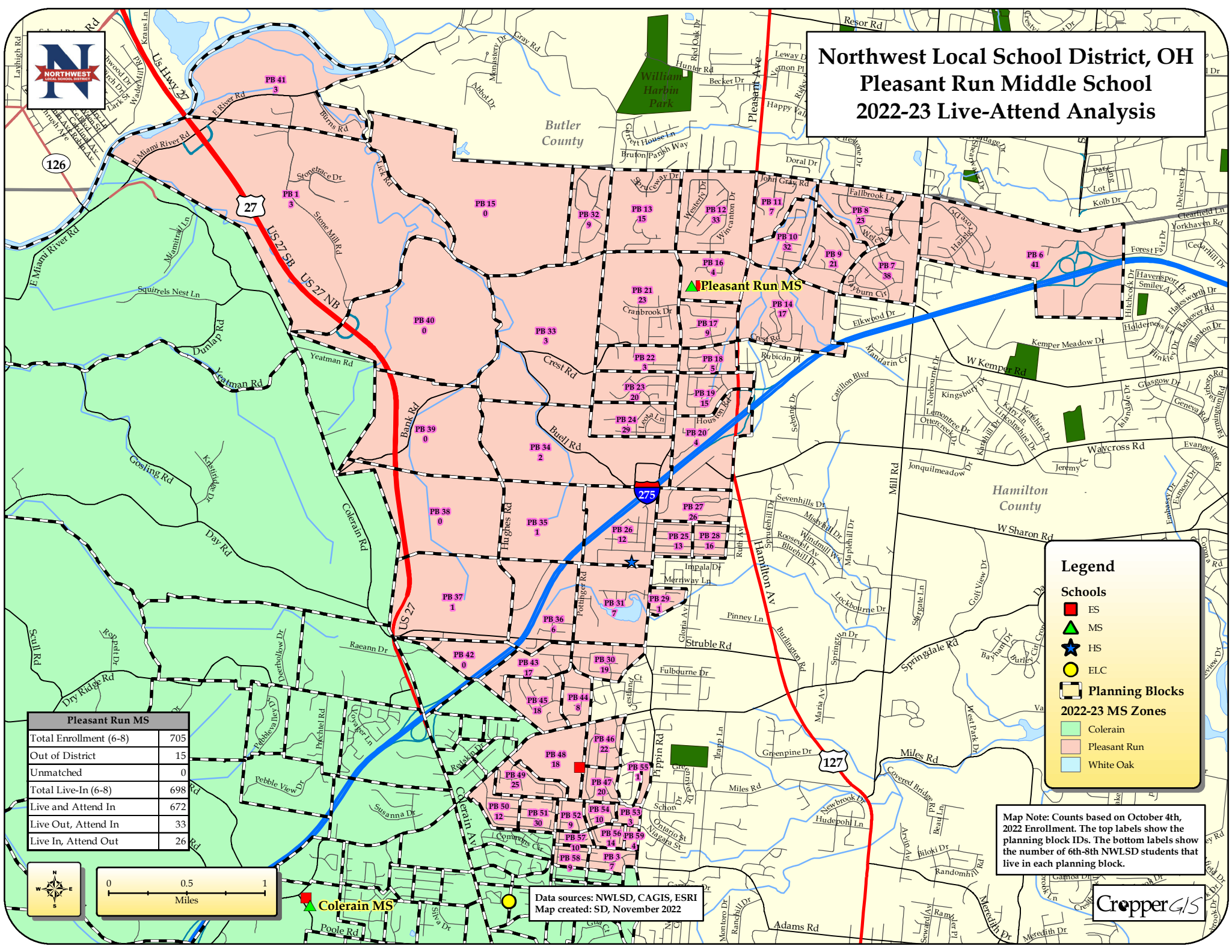


Data sources: NWLSD, CAGIS, ESRI
Map created: SD, November 2022





Northwest Local School District, OH Pleasant Run Middle School 2022-23 Live-Attend Analysis



Pleasant Run MS	
Total Enrollment (6-8)	705
Out of District	15
Unmatched	0
Total Live-In (6-8)	698
Live and Attend In	672
Live Out, Attend In	33
Live In, Attend Out	26

Legend

Schools

- ES (Elementary School): Red square
- MS (Middle School): Green triangle
- HS (High School): Blue star
- ELC (Elementary Learning Center): Yellow circle

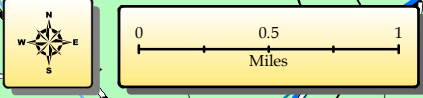
Planning Blocks

2022-23 MS Zones

- Colerain: Green background
- Pleasant Run: Pink background
- White Oak: Blue background

Map Note: Counts based on October 4th, 2022 Enrollment. The top labels show the planning block IDs. The bottom labels show the number of 6th-8th NWLSD students that live in each planning block.

Data sources: NWLSD, CAGIS, ESRI
Map created: SD, November 2022



Northwest Local School District, OH

White Oak Middle School

2022-23 Live-Attend Analysis



White Oak MS	
Total Enrollment (6-8)	729
Out of District	8
Unmatched	0
Total Live-In (6-8)	727
Live and Attend In	700
Live Out, Attend In	29
Live In, Attend Out	27

Legend

Schools

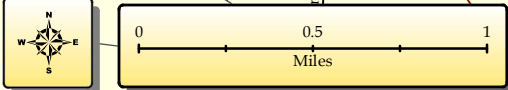
- ES (Red square)
- MS (Green triangle)
- HS (Blue star)
- ELC (Yellow circle)

Planning Blocks

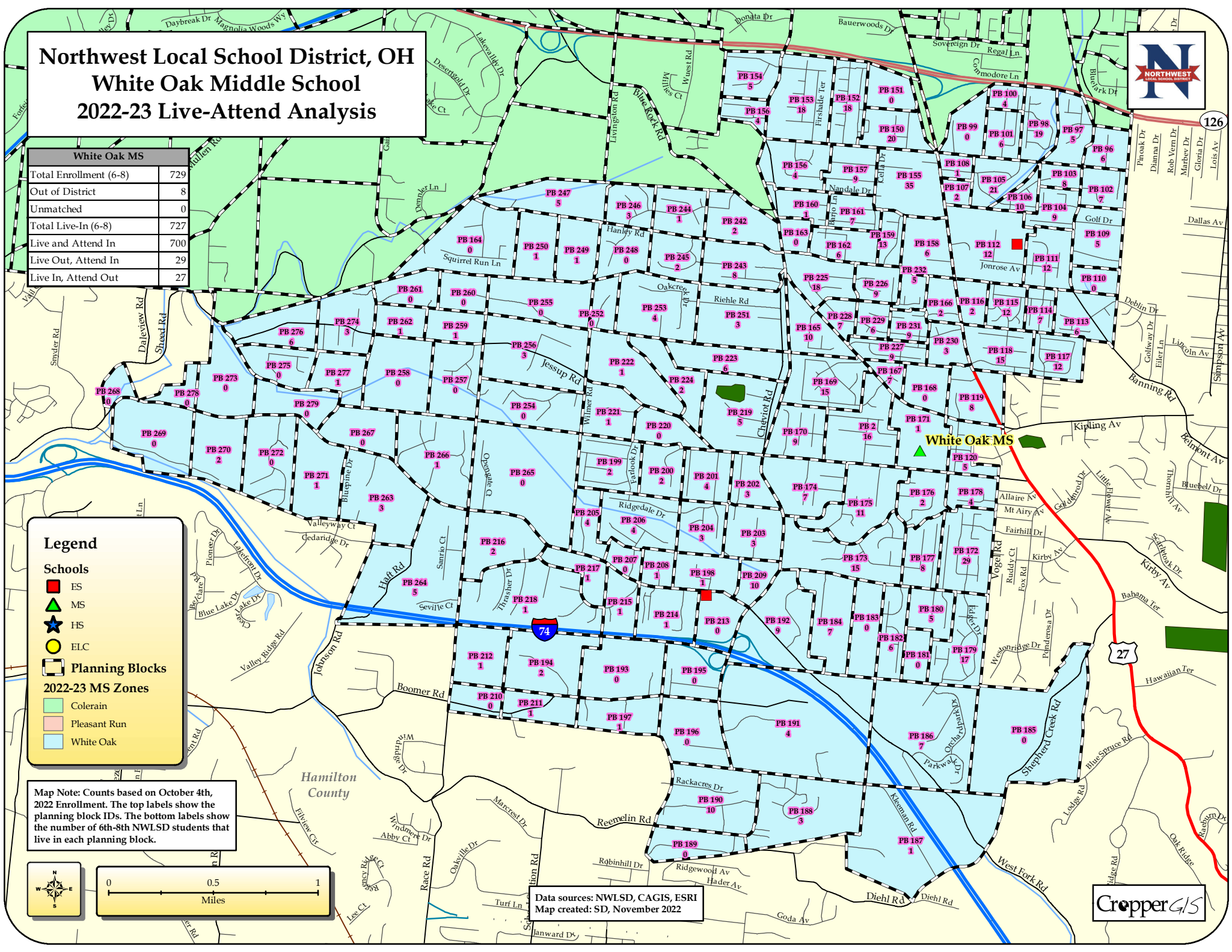
2022-23 MS Zones

- Colerain (Light green)
- Pleasant Run (Light orange)
- White Oak (Light blue)

Map Note: Counts based on October 4th, 2022 Enrollment. The top labels show the planning block IDs. The bottom labels show the number of 6th-8th NWLSD students that live in each planning block.



Data sources: NWLSD, CAGIS, ESRI
Map created: SD, November 2022



Northwest Local School District, OH Colerain High School - Section 1 2022-23 Live-Attend Analysis



Colerain HS	
Total Enrollment (9-12)	1,857
Out of District	20
Unmatched	0
Total Live-In (9-12)	1,803
Live and Attend In	1,777
Live Out, Attend In	80
Live In, Attend Out	26

Map Note: Counts based on October 4th, 2022 Enrollment. The top labels show the planning block IDs. The bottom labels show the number of 9th-12th NWLSD students that live in each planning block.

Legend

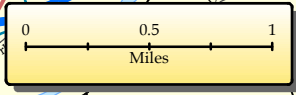
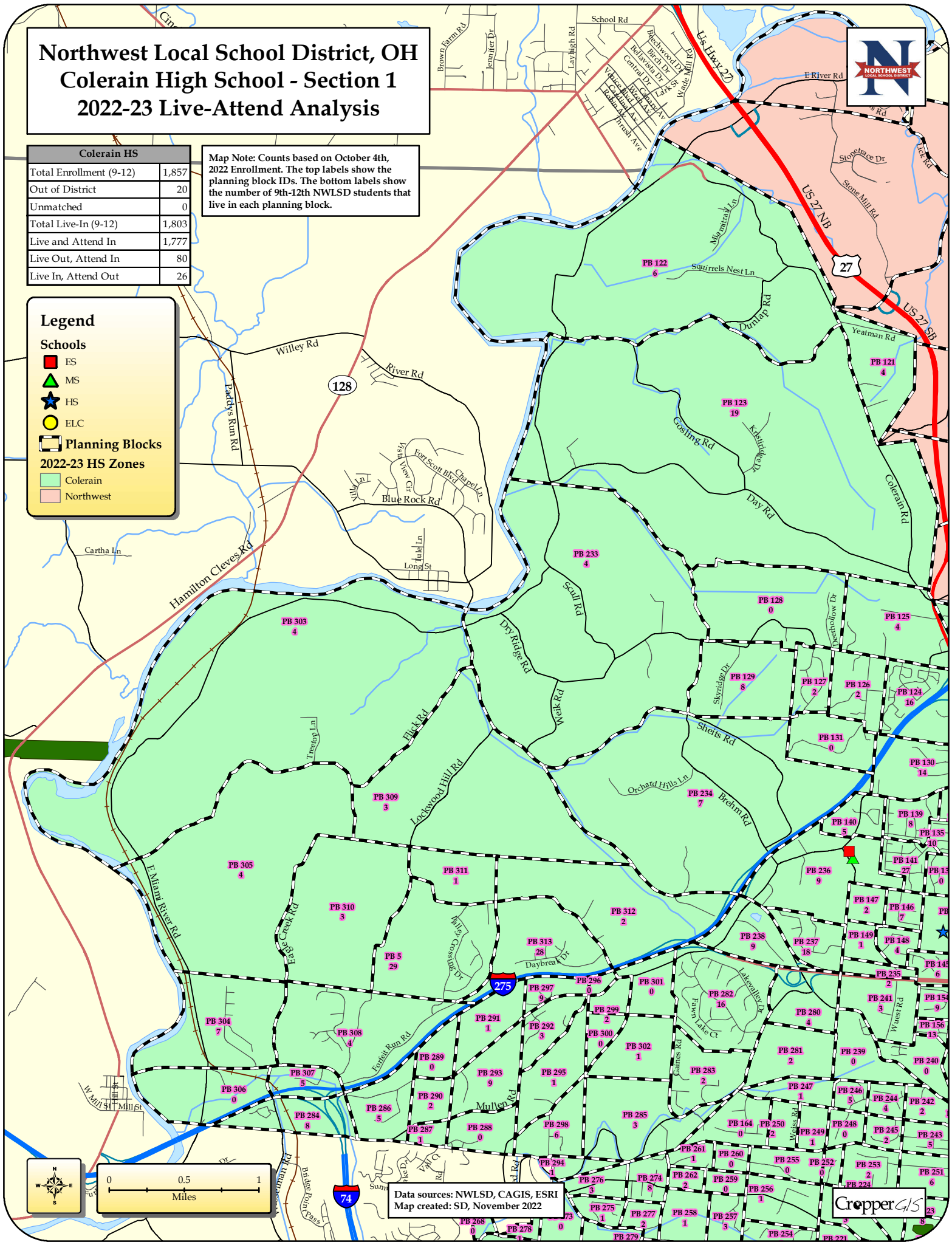
Schools

- ES
- ▲ MS
- ★ HS
- ELC

Planning Blocks

2022-23 HS Zones

- Colerain
- Northwest



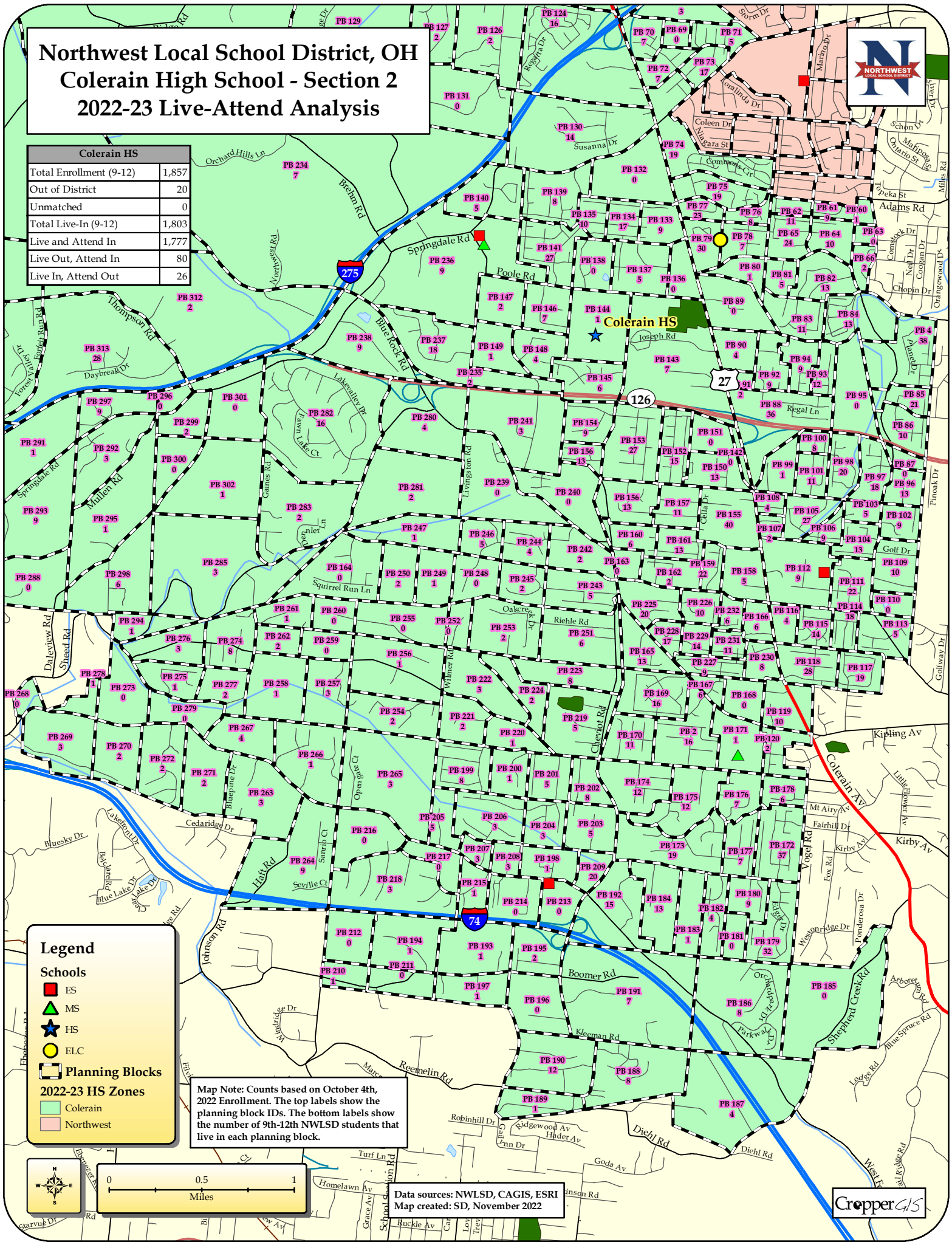
Data sources: NWLSD, CAGIS, ESRI
Map created: SD, November 2022



Northwest Local School District, OH Colerain High School - Section 2 2022-23 Live-Attend Analysis



Colerain HS	
Total Enrollment (9-12)	1,857
Out of District	20
Unmatched	0
Total Live-In (9-12)	1,803
Live and Attend In	1,777
Live Out, Attend In	80
Live In, Attend Out	26



Map Note: Counts based on October 4th, 2022 Enrollment. The top labels show the planning block IDs. The bottom labels show the number of 9th-12th NWLSD students that live in each planning block.

Legend

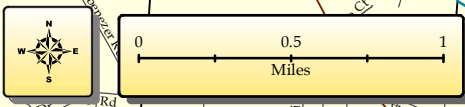
Schools

- ES
- MS
- HS
- ELC

Planning Blocks

2022-23 HS Zones

- Colerain
- Northwest

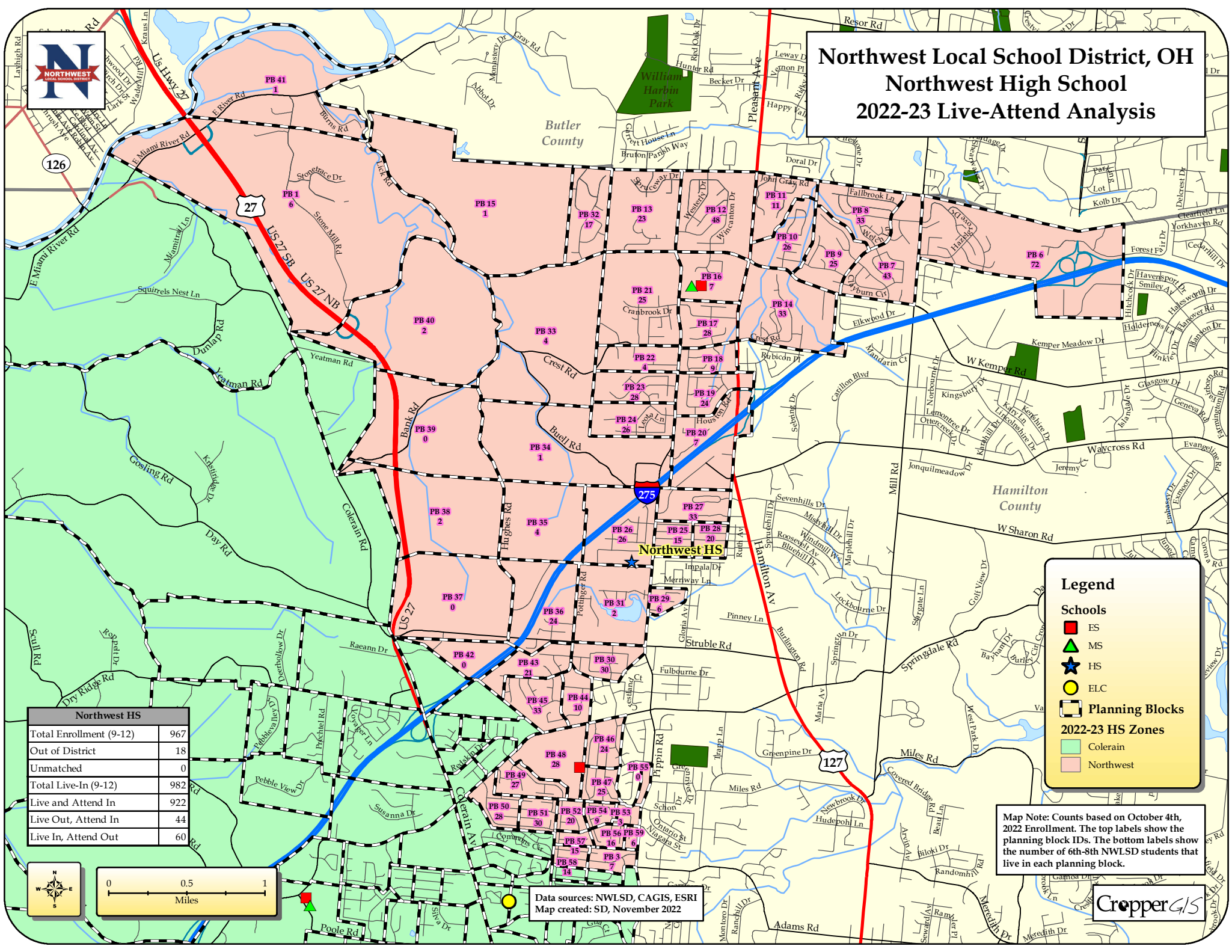


Data sources: NWLSD, CAGIS, ESRI
Map created: SD, November 2022





Northwest Local School District, OH Northwest High School 2022-23 Live-Attend Analysis



Northwest HS	
Total Enrollment (9-12)	967
Out of District	18
Unmatched	0
Total Live-In (9-12)	982
Live and Attend In	922
Live Out, Attend In	44
Live In, Attend Out	60

Legend

Schools

- ES (Red Square)
- MS (Green Triangle)
- HS (Blue Star)
- ELC (Yellow Circle)

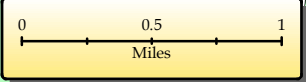
Planning Blocks

2022-23 HS Zones

- Colerain (Light Green)
- Northwest (Pink)

Map Note: Counts based on October 4th, 2022 Enrollment. The top labels show the planning block IDs. The bottom labels show the number of 6th-8th NWLSD students that live in each planning block.

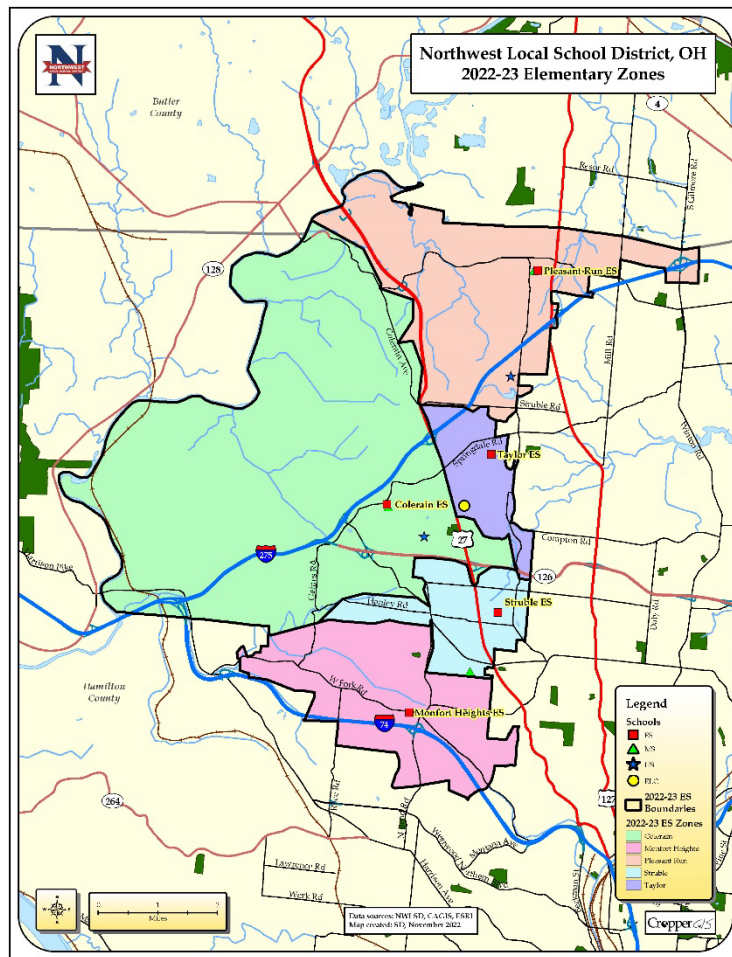
Data sources: NWLSD, CAGIS, ESRI
Map created: SD, November 2022





Northwest Local School District, OH Fall 2022 Redistricting Study

Appendix C: Enrollment and Utilization Tables



Appendix C: 2022-23 Capacity, Official Enrollment, Live Attend Counts, and Building Utilizations

The following document contains a series of tables that depict statistics for current schools and boundaries that are being evaluated. This information will help inform all stakeholders on how schools could be potentially impacted as a result of potential redistricting adjustments. The current student enrollment numbers were derived from the district's 2022-23 Student Database dated October 4, 2022.

Glossary of Terms

Capacity -the number of students that an individual school has the physical capacity to enroll and can be reasonably accommodated in a facility.

Utilization - Utilization is the total enrollment divided by the capacity, described as a percentage.

Live-in students - Students residing inside of a school attendance boundary, regardless of where that student attends school.

Live and Attend - Students who attend the assigned schools for the zones where they live.

Live Out Attend In - Students that live outside of their attending school's boundary but reside within the Northwest Local School District's boundary.

Out of District students - Students that live outside of the Northwest Local School District's boundary.

Unmatched students - Students whose address was not able to be located by the GIS.

Feeder Pattern - The number of students living within the attendance boundary of both a lower grade cohort (ex. Elementary schools) and a higher-grade cohort (i.e. Middle School). This is given as both the number of Live-In students, and described as a percentage.



Enrollment and Utilization Tables

The following tables show current utilization by percentage based on current enrollment and 2022-23 building capacity. Student counts are based on the Northwest Local School District student database dated October 4, 2022.

		ES Current (2022-23)													
		Enrollment and Utilization									Enrolled Live-Attend				
Elementary School	2022-23 Capacity	Grade Config.	KG	01	02	03	04	05	Current Enrollment	Current Utilization	Live-In	Live and Attend-In	Live-Out and Attend-In	Out of District	Unmatched
Colerain Elementary	760	K-5	93	99	96	96	88	114	586	77%	579	528	57	4	1
Monfort Heights Elementary	695	K-5	80	80	65	77	95	98	495	71%	460	444	51	7	
Pleasant Run Elementary	834	K-5	136	174	156	159	158	143	926	111%	913	893	33	15	
Struble Elementary	834	K-5	143	155	146	130	155	160	889	107%	879	834	55	7	
Taylor Elementary	834	K-5	141	146	135	139	141	121	823	99%	837	771	52	17	
Total	3,957		593	654	598	601	637	636	3,719	94%	3,668	3,470	248	50	1

		MS Current (2022-23)										
		Enrollment and Utilization						Enrolled Live-Attend				
Middle School	2022-23 Capacity	Grade Config.	06	07	08	Current Enrollment	Current Utilization	Live-In	Live and Attend-In	Live-Out and Attend-In	Out of District	Unmatched
Colerain Middle School	449	6-8	191	199	196	586	131%	566	538	48	6	
Pleasant Run Middle School	692	6-8	206	233	266	705	102%	698	672	33	15	
White Oak Middle School	587	6-8	236	228	265	729	124%	727	700	29	8	
Total	1,728		633	660	727	2,020	117%	1,991	1,910	110	29	0



Enrollment and Utilization Tables (Continued)

		HS Current (2022-23)												
		Enrollment and Utilization							Enrolled Live-Attend					
High School	2022-23 Capacity	Grade Config.	09	10	11	12	Current Enrollment	Current Utilization	Live-In	Live and Attend-In	Live-Out and Attend-In	Out of District	Unmatched	
Colerain High School	1,750	9-12	434	497	462	464	1,857	106%	1,803	1,777	80	20		
Northwest High School	1,173	9-12	260	259	208	240	967	82%	982	922	44	18	1	
Total	2,923		694	756	670	704	2,824	97%	2,785	2,699	124	38	1	

Feeder Patterns

The tables below show the progression students follow from one grade cohort to the next by the percentage of students moving from each given lower grade cohort school to each given higher grade cohort school.

	ES to MS Splits	MS to HS Splits
Current	1	0

2022-23 ES Zone	2022-23 MS Zone	Total PK-5th Live In	ES Attendance
Colerain	Colerain	579	100%
Monfort Heights	White Oak	460	100%
Pleasant Run	Pleasant Run	913	100%
Struble	White Oak	879	100%
Taylor	Colerain	408	49%
Taylor	Pleasant Run	429	51%

2022-23 MS Zone	2022-23 HS Zone	Total 6th-8th Live In	MS Attendance
Colerain	Colerain	566	100%
Pleasant Run	Northwest	698	100%
White Oak	Colerain	727	100%



Cropper GIS Consulting, LLC

P.O. Box 1308

Delaware, OH 43015

Tel: 614.451.1242

Email: info@croppergis.com

Web: www.croppergis.com