



# **-Committee Meeting 2-**

## **Rezoning Study**

**June 27, 2019**

**CropperGIS**



# Review of Timeline

	Jan. '19	Feb. '19	Mar. '19	Apr. '19	May '19	June '19	July '19	Aug. '19	Sept. '19	Oct. '19	Nov. '19
<i>Data Collection</i>											
<i>Data Analysis / Assimilation</i>											
<i>Internal Logistics Planning with RPS</i>											
<i>Background Report Development</i>											
<i>Baseline Options Development</i>											
<i>Public Information Session #1 : Present Project Process, Criteria, Timeline, and Rezoning Objectives to Community. Information meeting to public.</i>					5/29						
<i>Rezoning Meeting 1</i> <i>- Review Background Data, Introduce Baseline Options</i>					5/30						
<i>Rezoning Meeting 2</i> <i>- Options Development</i>						6/27					
<i>Rezoning Meeting 3</i> <i>- Options Development, Prepare for Public Info Session #2</i>							7/30				
<i>Public Information Session #2: Present Preliminary Rezoning Options to Community for Comment/Feedback</i>								8/13 8/14			
<i>Rezoning Meeting 4</i> <i>- Review Survey Feedback/Results, Continue Options Development</i>									9/19		
<i>Rezoning Meeting 5</i> <i>- Finalize Recommendations &amp; Prepare for Board Presentation</i>										10/17	
<i>Presentation of Final Recommendations to the Board of Education</i>											11/4

We are here



# Agenda

- |              |                                                                  |
|--------------|------------------------------------------------------------------|
| 6:00 -- 6:30 | Review of new information and handouts of DRAFT baseline options |
| 6:30 -- 7:15 | Small group exercise to review DRAFT Options                     |
| 7:15 -- 7:55 | Discuss initial thoughts regarding DRAFT baseline options        |
| 7:55 -- 8:00 | Discuss Next Steps and Adjourn                                   |



# Why We're Here

1. 3 new buildings opening in Fall 2020:
  - New Greene Elementary School, with 1,000 seats
  - New George Mason Elementary School, with 750 seats
  - New Elkhardt-Thompson Middle School, with 1,500 seats
2. Additional considerations:
  - Respond to changes in demographics and population, which have created imbalances in building utilization throughout the division.
  - Identify potential school, program, and central office team consolidation opportunities.
    - Many buildings are in need of modernization or replacement.
    - Consolidating underutilized facilities with high repair costs will save capital dollars and accelerate capital repairs throughout the division.





# Why We're Here

Your task on this committee is to:

- Focus on working as a group to develop/modify DRAFT options for school attendance boundaries.
- Effectively populate the new Greene ES, George Mason ES, and the new Middle School on the Elkhardt Site.
- Address any utilization imbalances through rezoning, if possible.

You are not tasked to:

- Evaluate facility condition and make recommendations to facility improvements.
- Make recommendations regarding changes to school and/or student assignment policy.
- Evaluate specialty schools or pre-school facilities as part of the rezoning.



# Tonight's Primary Objectives

1. To review DRAFT Options 1 and 2, and provide your input based on local knowledge of the communities and city.
  - a) It is expected that your feedback will drive additional options for the next meeting.
2. To discuss, in small groups, the consideration of taking the old Thompson Middle School building offline, and to rezone middle schools in the south using Boushall, Brown, and the new middle school on the Elkhardt site.
  - a) If the result of this conversation is yes, Cropper GIS will come with an option at Meeting 3 that shows only Boushall, Brown and the new Middle School on the Elkhardt site.
  - b) Utilizing the 3 middle schools without the old Thompson site has advantages.
    - i. Better alignment of feeder patterns in the south.
    - ii. Better overall utilization balance.
    - iii. Touches on objective to consider consolidation opportunities.

*Why We're Here*



# Rezoning Guiding Principles

## *Rules to Follow*

The Richmond Public Schools has a set of guiding principles to follow when evaluating school rezoning options. These are rules to follow when considering any potential attendance zone adjustment.

The rezoning committee will be oriented on these guiding principles and will follow them as best as possible as they consider rezoning options.



# Rezoning Guiding Principles

## Principle 1: Engage the community by

- Providing multiple authentic opportunities for all stakeholders to share their ideas and provide feedback
- Creating an advisory body of community representatives to help guide the process
- Engaging local historians and other community leaders
- Reviewing and leveraging past rezoning efforts

*Rules to Follow*



# Rezoning Guiding Principles

## Principle 2: Develop new zones for RPS schools that improve the student experience by

- Ensuring safe, equitable, and more timely transportation; and leveraging natural boundaries when possible
- Increasing student diversity of all kinds within schools
- Alleviating overcrowding and minimizing, if not eliminating, the use of trailers
- Planning for future student population trends and future development
- Expediting student placement in modern facilities after rezoning through a variety of measures including new school construction, as well as potential consolidations and closures (revised)

*Rules to Follow*



# Rezoning Guiding Principles

**Principle 3:** Develop a plan for the disposition of vacant and non-instructional (owned/rented) properties in an effort to:

- Raise funds for new school construction
- Develop mutually beneficial partnerships with Richmond cultural institutions
- Focus more time, energy, and money on our core work: teaching and learning

*Rules to Follow*

## Follow-up to Meeting 1 Questions

- Can you print off the demographic and capacity study reports?
  - Copies of the demographic study and capacity study are provided at this meeting for you.
- Can you include the capacity data for specialty schools and preschools?
  - Capacity data was recently updated on the capacity study, and posted online. This is now updated on the online version.
- How can we better understand how income varies throughout the school division?
  - We have collected income data from the Census Bureau, American Community Survey, and a map has been provide to show the information. This map can be found in the materials online for the rezoning study.

## Follow-up to Meeting 1 Questions

- Can you provide some large-scale materials to help us understand forecasted utilization? So we can understand capacity constraints while looking at the plot maps?
  - Per your request, large scale forecasted utilization plots have been provided for the committee.
  - Also, we have provided the tables in a large format for ease of reference.
- Can you provide more detail on the racial composition of the Hispanic population at schools?
  - A handout has been provided to show the breakdown of Hispanic and non-Hispanic students per school by race.





## Follow-up to Meeting 1 Questions

- Can you provide more information about city planned housing, so we can better understand how this impacts the rezoning?
  - Per the Richmond Redevelopment Housing Authority (RRHA)

### Three Housing Transformation Programs

- **East End/Creighton Court**
  - Total of 256 Units to be completed by 2020
- **Fay Towers**
  - 11-Story Multi-Family building built in 1976, redeveloped in to 3 off-site communities. Once these are complete Fey Towers will be demolished
- **Highland Grove**
  - Currently still in planning stages, developing 140-160 units near Overby-Shepherd Elementary



# Requests & Questions

## Follow-up to Meeting 1 Questions

- Can we have more detail on the potential pre-school aged population?  
Information on forecasted pre-school children?
  - The demand is high in Richmond for preschool, and the programs are currently on a waitlist. Much like other school divisions/districts across the U.S., preschool enrollment is limited to the amount of resources a school division can allocate to the program.
  - Preschool is very rarely limited by the demand (i.e. number of students who are eligible for PreK).
  - We have provided a handout to show the forecasted number of 4-yr olds (those eligible for VPI) as well as 3-yr olds (those eligible for headstart).
    - You will see that the available PreK capacity is much lesser than the total number of 4-yr olds living in Richmond, indicating that there will always be demand.
- Can you provide more detail on student to teacher ratios at the schools?
  - A handout showing student : teacher ratios has been provided by RPS.



# Requests & Questions

**Focus tonight is reviewing maps in small groups.**

- If you have additional questions or requests for data, please write your question on the back of the table plots.
  - We will evaluate the questions and follow-up with answers and/or data if it helps provide more clarity towards your rezoning objectives.

*Rules to Follow*



# Review of DRAFT Options

- 3 DRAFT options are presented to you this evening
  - Committee has small-format maps, as well as plots of maps for review
  - Option maps are also now on interactive Web map ([www.croppermap.com/richmondrezoning](http://www.croppermap.com/richmondrezoning))
  - Copies of the hand outs, including small and large format maps will be posted on the Community Boundary Study Web page on the RPS Web site:

<https://www.rvaschools.net/2020-2021-rps-rezoning>

**When analyzing boundary options, it is best to look at the information in two different ways:**

- **Study the geography** i.e. shape of the current and option boundary lines
  - Look at where the lines shift away from the current vs. the option
  - Look at road networks and envision how school busses and parents would travel to school
- **Study the tables**
  - Review the balance of enrollment, and identify any imbalances that may exist
  - Question why there may be imbalances, and examine possible ways to provide better balance



# Review of DRAFT Options

## Option 1:

- No schools close or grade reconfiguration (i.e. pairing).
- Rezoning to balance utilization.
  - Most rezoning is north of river and around Broad Rock ES.
  - Little to no rezoning in the south central to south east part of the division (limited opportunities to provide balance/relief).
- Thompson MS assumed to remain open.

## Option 2:

- John B. Cary and Fox are paired (1 zone for 2 schools).
  - K-2 at Fox, 3-5 at Cary.
- Woodville and Fairfield Court ES are paired (1 zone for 2 schools).
  - K-2 at Fairfield Court, 3-5 at Woodville.
- Rezoning to balance utilization.
  - Most rezoning is north of river and around Broad Rock ES.
  - Little to no rezoning in the south central to south east part of the division (limited opportunities to provide balance/relief).
- Thompson MS assumed to remain open.

# Review of DRAFT Options

Elementary School	2018-19 Capacity	Total Enrolled	DRAFT Option 1 Estimated Enrollment	DRAFT Option 2 Estimated Enrollment
Barack Obama Elementary	402	301	359	359
Bellevue Elementary	361	209	305	249
Blackwell Elementary	601	412	480	412
Broad Rock Elementary	721	941	867	758
Chimborazo Elementary	560	375	380	375
E.S.H. Greene Elementary	1000	723	906	906
Elizabeth D. Redd Elementary	424	430	430	430
Fairfield Court Elementary	499	470	391	399
G.H. Reid Elementary	632	731	731	731
George Mason Elementary	750	403	442	499
George W. Carver Elementary	700	437	550	527
Ginter Park Elementary	389	306	324	324
J.B. Fisher Elementary	386	289	289	289
J.L. Francis Elementary	566	619	510	619
John B. Cary Elementary	336	282	282	347
Linwood Holton Elementary	591	605	436	529
Mary Munford Elementary	508	524	524	524
Miles Jones Elementary	575	658	658	658
Oak Grove Elementary	739	666	598	666
Overby-Sheppard Elementary	408	381	381	381
Southampton Elementary	531	405	405	405
Swansboro Elementary	296	254	254	254
Westover Hills Elementary	451	426	426	426
William Fox Elementary	477	484	464	329
Woodville Elementary	552	432	371	367
<b>Total</b>	<b>13455</b>	<b>11763</b>	<b>11763</b>	<b>11763</b>

# Review of DRAFT Options

Elementary School	2018-19 Capacity	Enrolled Utilization	DRAFT Option 1 Utilization	DRAFT Option 2 Utilization
Barack Obama Elementary	402	75%	89%	89%
Bellevue Elementary	361	58%	84%	69%
Blackwell Elementary	601	69%	80%	69%
Broad Rock Elementary	721	131%	120%	105%
Chimborazo Elementary	560	67%	68%	67%
E.S.H. Greene Elementary	1000	72%	91%	91%
Elizabeth D. Redd Elementary	424	101%	101%	101%
Fairfield Court Elementary	499	94%	78%	80%
G.H. Reid Elementary	632	116%	116%	116%
George Mason Elementary	750	54%	59%	67%
George W. Carver Elementary	700	62%	79%	75%
Ginter Park Elementary	389	79%	83%	83%
J.B. Fisher Elementary	386	75%	75%	75%
J.L. Francis Elementary	566	109%	90%	109%
John B. Cary Elementary	336	84%	84%	103%
Linwood Holton Elementary	591	102%	74%	90%
Mary Munford Elementary	508	103%	103%	103%
Miles Jones Elementary	575	114%	114%	114%
Oak Grove Elementary	739	90%	81%	90%
Overby-Sheppard Elementary	408	93%	93%	93%
Southampton Elementary	531	76%	76%	76%
Swansboro Elementary	296	86%	86%	86%
Westover Hills Elementary	451	94%	94%	94%
William Fox Elementary	477	101%	97%	69%
Woodville Elementary	552	78%	67%	66%
<b>Total</b>	<b>13455</b>	<b>87%</b>	<b>87%</b>	<b>87%</b>





# Review of DRAFT Options

Elementary School	Enrolled				
	Percent Black	Percent White	Percent Other	Percent Non-Hispanic	Percent Hispanic
Barack Obama Elementary	95.6%	3.0%	1.4%	99.0%	1.0%
Bellevue Elementary	87.7%	8.8%	3.4%	95.1%	4.9%
Blackwell Elementary	95.7%	3.3%	1.0%	98.7%	1.3%
Broad Rock Elementary	52.2%	44.8%	3.0%	57.2%	42.8%
Chimborazo Elementary	89.5%	8.8%	1.7%	98.1%	1.9%
E.S.H. Greene Elementary	11.5%	86.9%	1.6%	13.3%	86.7%
Elizabeth D. Redd Elementary	58.0%	40.5%	1.5%	64.2%	35.8%
Fairfield Court Elementary	97.6%	1.1%	1.3%	99.3%	0.7%
G.H. Reid Elementary	43.1%	55.2%	1.7%	46.4%	53.6%
George Mason Elementary	93.3%	3.3%	3.3%	98.2%	1.8%
George W. Carver Elementary	94.4%	3.7%	1.9%	97.9%	2.1%
Ginter Park Elementary	96.7%	1.7%	1.7%	98.0%	2.0%
J.B. Fisher Elementary	60.6%	33.3%	6.0%	80.9%	19.1%
J.L. Francis Elementary	54.5%	40.3%	5.1%	58.6%	41.4%
John B. Cary Elementary	86.0%	9.9%	4.0%	96.3%	3.7%
Linwood Holton Elementary	51.3%	43.3%	5.5%	98.1%	1.9%
Mary Munford Elementary	12.9%	76.8%	10.3%	93.4%	6.6%
Miles Jones Elementary	69.7%	29.3%	0.9%	72.5%	27.5%
Oak Grove Elementary	81.0%	17.9%	1.1%	83.5%	16.5%
Overby-Sheppard Elementary	92.9%	6.0%	1.1%	95.9%	4.1%
Southampton Elementary	84.5%	9.8%	5.7%	90.4%	9.6%
Swansboro Elementary	88.8%	9.5%	1.7%	93.0%	7.0%
Westover Hills Elementary	85.4%	12.2%	2.4%	95.7%	4.3%
William Fox Elementary	21.5%	65.7%	12.8%	90.6%	9.4%
Woodville Elementary	96.6%	2.2%	1.2%	99.5%	0.5%
<b>Total</b>	<b>66.6%</b>	<b>30.1%</b>	<b>3.3%</b>	<b>79.7%</b>	<b>20.3%</b>

Elementary School	DRAFT Option 1				
	Percent Black	Percent White	Percent Other	Percent Non-Hispanic	Percent Hispanic
Barack Obama Elementary	94.4%	3.6%	1.9%	98.3%	1.7%
Bellevue Elementary	92.5%	4.9%	2.6%	97.0%	3.0%
Blackwell Elementary	93.8%	5.4%	0.8%	96.9%	3.1%
Broad Rock Elementary	47.5%	48.3%	4.2%	52.4%	47.6%
Chimborazo Elementary	90.0%	9.2%	0.8%	97.1%	2.9%
E.S.H. Greene Elementary	19.0%	79.5%	1.5%	21.1%	78.9%
Elizabeth D. Redd Elementary	57.2%	41.2%	1.6%	64.2%	35.8%
Fairfield Court Elementary	97.4%	1.3%	1.3%	99.2%	0.8%
G.H. Reid Elementary	41.6%	56.8%	1.6%	45.0%	55.0%
George Mason Elementary	93.7%	3.2%	3.2%	98.4%	1.6%
George W. Carver Elementary	87.6%	8.0%	4.4%	97.6%	2.4%
Ginter Park Elementary	92.6%	6.2%	1.2%	99.1%	0.9%
J.B. Fisher Elementary	59.5%	34.6%	5.9%	81.0%	19.0%
J.L. Francis Elementary	60.2%	36.1%	3.7%	64.5%	35.5%
John B. Cary Elementary	86.2%	9.9%	3.9%	96.5%	3.5%
Linwood Holton Elementary	44.3%	50.0%	5.7%	97.9%	2.1%
Mary Munford Elementary	12.6%	76.9%	10.5%	93.5%	6.5%
Miles Jones Elementary	69.8%	29.3%	0.9%	72.5%	27.5%
Oak Grove Elementary	78.9%	19.9%	1.2%	81.3%	18.7%
Overby-Sheppard Elementary	93.2%	5.8%	1.0%	96.1%	3.9%
Southampton Elementary	83.5%	10.9%	5.7%	89.4%	10.6%
Swansboro Elementary	89.4%	9.1%	1.6%	93.3%	6.7%
Westover Hills Elementary	85.2%	12.4%	2.3%	95.5%	4.5%
William Fox Elementary	20.9%	67.7%	11.4%	90.1%	9.9%
Woodville Elementary	95.4%	2.7%	1.9%	99.7%	0.3%
<b>Total</b>	<b>66.1%</b>	<b>30.7%</b>	<b>3.2%</b>	<b>79.0%</b>	<b>21.0%</b>

Student counts are based on the 10/31/2018 RPS student database.



# Review of DRAFT Options

Elementary School	Enrolled				
	Percent Black	Percent White	Percent Other	Percent Non-Hispanic	Percent Hispanic
Barack Obama Elementary	95.6%	3.0%	1.4%	99.0%	1.0%
Bellevue Elementary	87.7%	8.8%	3.4%	95.1%	4.9%
Blackwell Elementary	95.7%	3.3%	1.0%	98.7%	1.3%
Broad Rock Elementary	52.2%	44.8%	3.0%	57.2%	42.8%
Chimborazo Elementary	89.5%	8.8%	1.7%	98.1%	1.9%
E.S.H. Greene Elementary	11.5%	86.9%	1.6%	13.3%	86.7%
Elizabeth D. Redd Elementary	58.0%	40.5%	1.5%	64.2%	35.8%
Fairfield Court Elementary	97.6%	1.1%	1.3%	99.3%	0.7%
G.H. Reid Elementary	43.1%	55.2%	1.7%	46.4%	53.6%
George Mason Elementary	93.3%	3.3%	3.3%	98.2%	1.8%
George W. Carver Elementary	94.4%	3.7%	1.9%	97.9%	2.1%
Ginter Park Elementary	96.7%	1.7%	1.7%	98.0%	2.0%
J.B. Fisher Elementary	60.6%	33.3%	6.0%	80.9%	19.1%
J.L. Francis Elementary	54.5%	40.3%	5.1%	58.6%	41.4%
John B. Cary Elementary	86.0%	9.9%	4.0%	96.3%	3.7%
Linwood Holton Elementary	51.3%	43.3%	5.5%	98.1%	1.9%
Mary Munford Elementary	12.9%	76.8%	10.3%	93.4%	6.6%
Miles Jones Elementary	69.7%	29.3%	0.9%	72.5%	27.5%
Oak Grove Elementary	81.0%	17.9%	1.1%	83.5%	16.5%
Overby-Sheppard Elementary	92.9%	6.0%	1.1%	95.9%	4.1%
Southampton Elementary	84.5%	9.8%	5.7%	90.4%	9.6%
Swansboro Elementary	88.8%	9.5%	1.7%	93.0%	7.0%
Westover Hills Elementary	85.4%	12.2%	2.4%	95.7%	4.3%
William Fox Elementary	21.5%	65.7%	12.8%	90.6%	9.4%
Woodville Elementary	96.6%	2.2%	1.2%	99.5%	0.5%
<b>Total</b>	<b>66.6%</b>	<b>30.1%</b>	<b>3.3%</b>	<b>79.7%</b>	<b>20.3%</b>

Elementary School	DRAFT Option 2				
	Percent Black	Percent White	Percent Other	Percent Non-Hispanic	Percent Hispanic
Barack Obama Elementary	94.4%	3.6%	1.9%	98.3%	1.7%
Bellevue Elementary	89.2%	8.0%	2.8%	94.8%	5.2%
Blackwell Elementary	95.9%	3.2%	1.0%	98.8%	1.2%
Broad Rock Elementary	52.0%	44.7%	3.3%	57.3%	42.7%
Chimborazo Elementary	89.6%	8.8%	1.6%	98.1%	1.9%
E.S.H. Greene Elementary	19.0%	79.5%	1.5%	21.1%	78.9%
Elizabeth D. Redd Elementary	57.2%	41.2%	1.6%	64.2%	35.8%
Fairfield Court Elementary	98.7%	1.3%	0.0%	99.5%	0.5%
G.H. Reid Elementary	41.6%	56.8%	1.6%	45.0%	55.0%
George Mason Elementary	93.6%	3.8%	2.6%	98.4%	1.6%
George W. Carver Elementary	82.7%	11.6%	5.7%	97.5%	2.5%
Ginter Park Elementary	92.6%	6.2%	1.2%	99.1%	0.9%
J.B. Fisher Elementary	59.5%	34.6%	5.9%	81.0%	19.0%
J.L. Francis Elementary	52.5%	42.6%	4.8%	56.4%	43.6%
John B. Cary Elementary	51.9%	42.1%	6.1%	91.4%	8.6%
Linwood Holton Elementary	48.2%	45.9%	5.9%	97.7%	2.3%
Mary Munford Elementary	12.6%	76.9%	10.5%	93.5%	6.5%
Miles Jones Elementary	69.8%	29.3%	0.9%	72.5%	27.5%
Oak Grove Elementary	79.1%	19.8%	1.1%	81.7%	18.3%
Overby-Sheppard Elementary	93.2%	5.8%	1.0%	96.1%	3.9%
Southampton Elementary	83.5%	10.9%	5.7%	89.4%	10.6%
Swansboro Elementary	89.4%	9.1%	1.6%	93.3%	6.7%
Westover Hills Elementary	85.2%	12.4%	2.3%	95.5%	4.5%
William Fox Elementary	43.8%	46.8%	9.4%	93.0%	7.0%
Woodville Elementary	96.5%	0.5%	3.0%	99.7%	0.3%
<b>Total</b>	<b>66.1%</b>	<b>30.7%</b>	<b>3.2%</b>	<b>79.0%</b>	<b>21.0%</b>

Student counts are based on the 10/31/2018 RPS student database.

2019-20 ES Zone	2019-20 MS Zone	Total K-5th Live and Attend-In	ES Attendance
Barack Obama	Henderson	256	100%
Bellevue	Martin Luther King Jr	145	100%
Blackwell	Elkhardt-Thompson	254	68%
Blackwell	Martin Luther King Jr	121	32%
Broad Rock	Boushall	887	100%
Carver	Binford	7	2%
Carver	Henderson	15	4%
Carver	Hill	379	95%
Cary	Binford	183	84%
Cary	Hill	35	16%
Chimborazo	Martin Luther King Jr	345	100%
Fairfield Court	Martin Luther King Jr	439	100%
Fisher	Elkhardt-Thompson	201	100%
Fox	Binford	185	49%
Fox	Hill	191	51%
Francis	Boushall	153	26%
Francis	Elkhardt-Thompson	434	74%
Ginter Park	Henderson	272	100%
Greene	Boushall	704	100%
Holton	Henderson	462	100%
Mason	Martin Luther King Jr	372	100%
Miles Jones	Brown	503	84%
Miles Jones	Elkhardt-Thompson	96	16%
Munford	Hill	437	100%
Oak Grove	Boushall	511	81%
Oak Grove	Elkhardt-Thompson	116	19%
Overby Sheppard	Henderson	168	48%
Overby Sheppard	Martin Luther King Jr	180	52%
Redd	Boushall	44	11%
Redd	Brown	314	77%
Redd	Elkhardt-Thompson	51	12%
Reid	Elkhardt-Thompson	707	100%
Southampton	Brown	290	88%
Southampton	Elkhardt-Thompson	41	12%
Swansboro	Elkhardt-Thompson	223	100%
Westover Hills	Brown	107	29%
Westover Hills	Elkhardt-Thompson	259	71%
Woodville	Martin Luther King Jr	403	100%

# Review of DRAFT Options

DRAFT Option 1 ES Zone	DRAFT Option 1 MS Zone	Total K-5th Live and Attend-In	ES Attendance
Barack Obama	Henderson	314	100%
Bellevue	Martin Luther King Jr	241	100%
Blackwell	Boushall	68	15%
Blackwell	Thompson	375	85%
Broad Rock	Boushall	813	100%
Carver	Henderson	108	21%
Carver	Hill	406	79%
Cary	Binford	183	84%
Cary	Hill	35	16%
Chimborazo	Martin Luther King Jr	350	100%
Fairfield Court	Martin Luther King Jr	360	100%
Fisher	Thompson	201	100%
Fox	Binford	165	46%
Fox	Hill	191	54%
Francis	Elkhardt	478	100%
Ginter Park	Henderson	290	100%
Greene	Elkhardt	887	100%
Holton	Henderson	293	100%
Mason	Martin Luther King Jr	411	100%
Miles Jones	Brown	270	45%
Miles Jones	Elkhardt	329	55%
Munford	Hill	437	100%
Oak Grove	Boushall	559	100%
Overby Sheppard	Henderson	348	100%
Redd	Brown	187	46%
Redd	Elkhardt	222	54%
Reid	Elkhardt	707	100%
Southampton	Brown	214	65%
Southampton	Thompson	117	35%
Swansboro	Thompson	223	100%
Westover Hills	Thompson	366	100%
Woodville	Martin Luther King Jr	342	100%

2019-20 ES Zone	2019-20 MS Zone	Total K-5th Live and Attend-In	ES Attendance
Barack Obama	Henderson	256	100%
Bellevue	Martin Luther King Jr	145	100%
Blackwell	Elkhardt-Thompson	254	68%
Blackwell	Martin Luther King Jr	121	32%
Broad Rock	Boushall	887	100%
Carver	Binford	7	2%
Carver	Henderson	15	4%
Carver	Hill	379	95%
Cary	Binford	183	84%
Cary	Hill	35	16%
Chimborazo	Martin Luther King Jr	345	100%
Fairfield Court	Martin Luther King Jr	439	100%
Fisher	Elkhardt-Thompson	201	100%
Fox	Binford	185	49%
Fox	Hill	191	51%
Francis	Boushall	153	26%
Francis	Elkhardt-Thompson	434	74%
Ginter Park	Henderson	272	100%
Greene	Boushall	704	100%
Holton	Henderson	462	100%
Mason	Martin Luther King Jr	372	100%
Miles Jones	Brown	503	84%
Miles Jones	Elkhardt-Thompson	96	16%
Munford	Hill	437	100%
Oak Grove	Boushall	511	81%
Oak Grove	Elkhardt-Thompson	116	19%
Overby Sheppard	Henderson	168	48%
Overby Sheppard	Martin Luther King Jr	180	52%
Redd	Boushall	44	11%
Redd	Brown	314	77%
Redd	Elkhardt-Thompson	51	12%
Reid	Elkhardt-Thompson	707	100%
Southampton	Brown	290	88%
Southampton	Elkhardt-Thompson	41	12%
Swansboro	Elkhardt-Thompson	223	100%
Westover Hills	Brown	107	29%
Westover Hills	Elkhardt-Thompson	259	71%
Woodville	Martin Luther King Jr	403	100%

# Review of DRAFT Options

DRAFT Option 2 ES Zone	DRAFT Option 2 MS Zone	Total K-5th Live and Attend-In	ES Attendance
Barack Obama	Henderson	314	100%
Bellevue	Martin Luther King Jr	185	100%
Blackwell	Thompson	375	100%
Broad Rock	Boushall	704	100%
Carver	Binford	146	30%
Carver	Henderson	345	70%
Cary/Fox	Hill	504	100%
Chimborazo	Martin Luther King Jr	345	100%
Fairfield Court/Woodville	Martin Luther King Jr	706	100%
Fisher	Thompson	201	100%
Francis	Boushall	153	26%
Francis	Elkhardt	434	74%
Ginter Park	Henderson	290	100%
Greene	Elkhardt	887	100%
Holton	Henderson	386	100%
Mason	Martin Luther King Jr	468	100%
Miles Jones	Brown	270	45%
Miles Jones	Thompson	329	55%
Munford	Hill	437	100%
Oak Grove	Boushall	116	19%
Oak Grove	Elkhardt	511	81%
Overby Sheppard	Henderson	348	100%
Redd	Brown	182	44%
Redd	Elkhardt	117	29%
Redd	Thompson	110	27%
Reid	Elkhardt	707	100%
Southampton	Brown	214	65%
Southampton	Thompson	117	35%
Swansboro	Thompson	223	100%
Westover Hills	Thompson	366	100%



# Review of DRAFT Options

ES Zone 2018-19	DRAFT Option 1 ES Zone	Total K-5th Live and Attend In Students
Barack Obama	Barack Obama	256
Bellevue	Bellevue	19
Bellevue	Chimborazo	106
Bellevue	Mason	20
Blackwell	Blackwell	375
Broad Rock	Broad Rock	704
Broad Rock	Greene	183
Carver	Carver	401
Cary	Cary	218
Chimborazo	Chimborazo	244
Chimborazo	Mason	21
Chimborazo	Woodville	80
Fairfield Court	Bellevue	222
Fairfield Court	Fairfield Court	217
Fisher	Fisher	201
Fox	Carver	20
Fox	Fox	356
Francis	Broad Rock	109
Francis	Francis	478
Ginter Park	Barack Obama	58
Ginter Park	Ginter Park	214
Greene	Greene	704
Holton	Carver	93
Holton	Ginter Park	76
Holton	Holton	293
Mason	Mason	370
Mason	Woodville	2
Miles Jones	Miles Jones	599
Munford	Munford	437
Oak Grove	Blackwell	68
Oak Grove	Oak Grove	559
Overby Sheppard	Overby Sheppard	348
Redd	Redd	409
Reid	Reid	707
Southampton	Southampton	331
Swansboro	Swansboro	223
Westover Hills	Westover Hills	366
Woodville	Fairfield Court	143
Woodville	Woodville	260

ES Zone 2018-19	DRAFT Option 2 ES Zone	Total K-5th Live and Attend In Students
Barack Obama	Barack Obama	256
Bellevue	Bellevue	145
Blackwell	Blackwell	375
Broad Rock	Broad Rock	704
Broad Rock	Greene	183
Carver	Carver	401
Cary	Carver	5
Cary	Cary/Fox	213
Chimborazo	Chimborazo	345
Fairfield Court	Fairfield Court/Woodville	439
Fisher	Fisher	201
Fox	Carver	85
Fox	Cary/Fox	291
Francis	Francis	587
Ginter Park	Barack Obama	58
Ginter Park	Ginter Park	214
Greene	Greene	704
Holton	Ginter Park	76
Holton	Holton	386
Mason	Bellevue	40
Mason	Mason	332
Miles Jones	Miles Jones	599
Munford	Munford	437
Oak Grove	Oak Grove	627
Overby Sheppard	Overby Sheppard	348
Redd	Redd	409
Reid	Reid	707
Southampton	Southampton	331
Swansboro	Swansboro	223
Westover Hills	Westover Hills	366
Woodville	Fairfield Court/Woodville	267
Woodville	Mason	136

Option	Total K-5th Live and Attend In Students Impacted
Option 1	1201
Option 2	583





# DRAFT Option 1 ES

Richmond Public Schools, VA  
Elementary Zones  
DRAFT Option 1



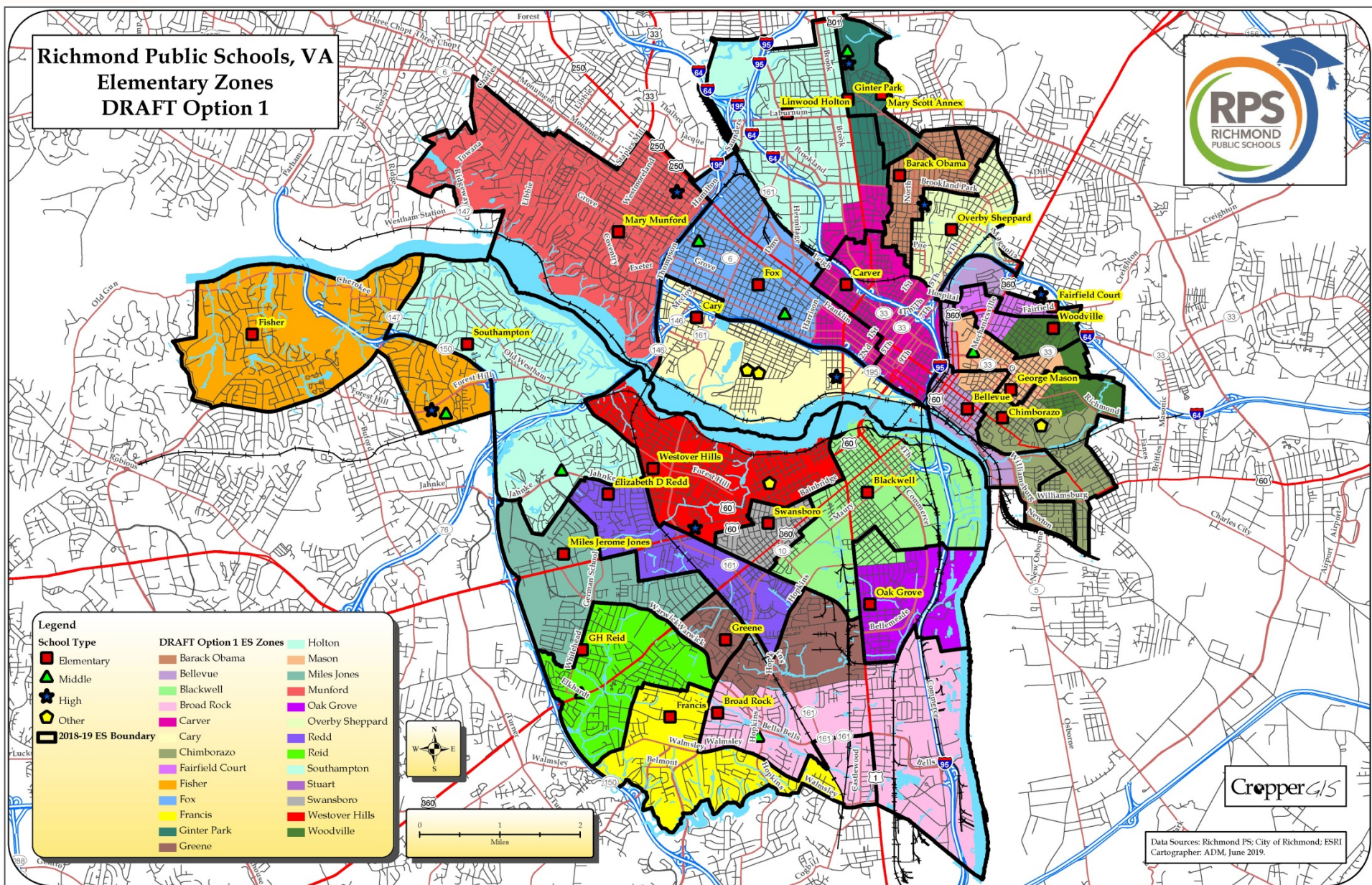
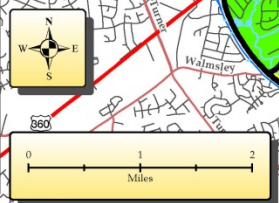
**Legend**

**School Type**

- Elementary
- Middle
- High
- Other
- 2018-19 ES Boundary

**DRAFT Option 1 ES Zones**

Barack Obama	Mason
Bellevue	Miles Jones
Blackwell	Munford
Broad Rock	Oak Grove
Carver	Overby Sheppard
Cary	Reid
Chimborazo	Southampton
Fairfield Court	Stuart
Fisher	Swansboro
Fox	Westover Hills
Francis	Woodville
Ginter Park	
Greene	



CropperGIS

Data Sources: Richmond PS; City of Richmond; ESRI  
Cartographer: ADM, June 2019.



# DRAFT Option 1 ES

## Advantages

### **Division-Wide**

- Better balance of building utilization among the schools.
- Feeder patterns from ES to MS are cleaner, only 3 Elementary Schools split to more than one Middle School. (13 current splits, vs. 7 in ES Option 1)

### **North**

- Utilization relief provided to Linwood Holton, and William Fox.

### **South**

- Utilization relief provided to Broad Rock, and J. L. Francis
- Effectively utilizing Greene ES to help provide as much relief as possible to schools in the area.

## Limitations

### **Division-Wide**

- No real change to race/ethnic demographics of schools.
- Option impacts over 2x as many students as Option 2.

### **North**

- Impacts the most K-5<sup>th</sup> students.
- An oddly-shaped zone configuration for Bellevue (pulling from Fairfield Court), to provide utilization balance in the region.
- No relief to Mary Munford

### **South**

- Broad Rock, G. H. Reid, and Miles Jones remain over 110% utilized.
- No relief can be provided to schools such as Miles Jones, Reid, or Redd ES





Data Sources: Richmond PS; City of Richmond; ESRI  
Cartographer: ADM, June 2019.





# DRAFT Option 2 ES

## Advantages

### **Division-Wide**

- Better balance of building utilization among the schools.
- Pairing Fox/Cary provides a more diverse environment at both schools.
- Fewer students impacted overall.
- Feeder patterns from ES to MS are cleaner, only 3 Elementary Schools split to more than one Middle School. (13 current splits, vs. 7 in ES Option 1)

### **North**

- Utilization relief provided to Linwood Holton, and William Fox.
- Pairing Fairfield Court / Woodville provides better balance of building utilization.

### **South**

- More relief provided to Broad Rock than Option 1 (no moves from Francis)
- Effectively utilizing Greene ES to help provide as much relief as possible to schools in the area.

## Limitations

### **Division-Wide**

- Pairing concepts are relatively new to RPS, and will require some preparation to implement.
- Facilities may not be ideal for K-2 grades (for paired schools), which could pose a challenge.

### **North**

- No relief to Mary Munford
- Cary ES is over 100% in pairing concept.

### **South**

- Redd ES is still split to 3 middle schools.
- No relief can be provided to schools such as Francis, Miles Jones, Reid, or Redd ES



# Review of DRAFT Options

Middle School	2018-19 Capacity	Option Capacity	Total Enrolled	Option 1 Estimated Enrollment	Option 2 Estimated Enrollment
Albert Hill Middle School	819	819	549	552	489
Binford Middle School	661	661	411	408	341
Boushall Middle School	885	885	807	531	337
Elkhardt Middle School	0	1500	0	946	942
Lucille Murray Brown Middle School	779	779	812	558	558
Martin Luther King Jr Middle School	876	876	660	597	597
Thompson Middle School	921	921	863	479	677
Thomas H Henderson Middle School	977	977	392	423	553
<b>Total</b>	<b>5918</b>	<b>7418</b>	<b>4494</b>	<b>4494</b>	<b>4494</b>

Student counts are based on the 10/31/2018 RPS student database.



# Review of DRAFT Options

Middle School	2018-19 Capacity	Option Capacity	Enrolled Utilization	Option 1 Utilization	Option 2 Utilization
Albert Hill Middle School	819	819	67%	67%	60%
Binford Middle School	661	661	62%	62%	52%
Boushall Middle School	885	885	91%	60%	38%
Elkhardt Middle School	0	1500	0%	63%	63%
Lucille Murray Brown Middle School	779	779	104%	72%	72%
Martin Luther King Jr Middle School	876	876	75%	68%	68%
Thompson Middle School	921	921	94%	52%	74%
Thomas H Henderson Middle School	977	977	40%	43%	57%
<b>Total</b>	<b>5918</b>	<b>7418</b>	<b>76%</b>	<b>61%</b>	<b>61%</b>

Student counts are based on the 10/31/2018 RPS student database.



# Review of DRAFT Options

Middle School	Enrolled				
	Percent Black	Percent White	Percent Other	Percent Non-Hispanic	Percent Hispanic
Albert Hill Middle School	54.1%	39.0%	6.9%	94.0%	6.0%
Binford Middle School	71.0%	26.3%	2.7%	96.8%	3.2%
Boushall Middle School	48.0%	49.6%	2.5%	48.9%	51.1%
Elkhardt Thompson Middle School	0.0%	0.0%	0.0%	0.0%	0.0%
Lucille Murray Brown Middle School	70.9%	26.2%	2.8%	80.4%	19.6%
Martin Luther King Jr Middle School	96.8%	1.8%	1.4%	99.2%	0.8%
Thompson Middle School	72.3%	22.4%	5.3%	75.9%	24.1%
Thomas H Henderson Middle School	94.1%	4.6%	1.3%	97.2%	2.8%
<b>Total</b>	<b>70.9%</b>	<b>25.8%</b>	<b>3.4%</b>	<b>81.3%</b>	<b>18.7%</b>

Middle School	DRAFT Option 1				
	Percent Black	Percent White	Percent Other	Percent Non-Hispanic	Percent Hispanic
Albert Hill Middle School	54.2%	38.9%	6.9%	94.0%	6.0%
Binford Middle School	71.1%	26.2%	2.7%	96.8%	3.2%
Boushall Middle School	66.1%	30.7%	3.2%	67.4%	32.6%
Elkhardt Thompson Middle School	47.5%	48.1%	4.4%	50.2%	49.8%
Lucille Murray Brown Middle School	73.3%	23.5%	3.2%	84.8%	15.2%
Martin Luther King Jr Middle School	96.5%	2.0%	1.5%	99.2%	0.8%
Thompson Middle School	85.6%	11.9%	2.5%	89.6%	10.4%
Thomas H Henderson Middle School	94.6%	4.3%	1.2%	97.4%	2.6%
<b>Total</b>	<b>70.9%</b>	<b>25.8%</b>	<b>3.4%</b>	<b>81.3%</b>	<b>18.7%</b>

Student counts are based on the 10/31/2018 RPS student database.



# Review of DRAFT Options

Middle School	Enrolled				
	Percent Black	Percent White	Percent Other	Percent Non-Hispanic	Percent Hispanic
Albert Hill Middle School	54.1%	39.0%	6.9%	94.0%	6.0%
Binford Middle School	71.0%	26.3%	2.7%	96.8%	3.2%
Boushall Middle School	48.0%	49.6%	2.5%	48.9%	51.1%
Elkhardt Thompson Middle School	0.0%	0.0%	0.0%	0.0%	0.0%
Lucille Murray Brown Middle School	70.9%	26.2%	2.8%	80.4%	19.6%
Martin Luther King Jr Middle School	96.8%	1.8%	1.4%	99.2%	0.8%
Thompson Middle School	72.3%	22.4%	5.3%	75.9%	24.1%
Thomas H Henderson Middle School	94.1%	4.6%	1.3%	97.2%	2.8%
<b>Total</b>	<b>70.9%</b>	<b>25.8%</b>	<b>3.4%</b>	<b>81.3%</b>	<b>18.7%</b>

Middle School	DRAFT Option 2				
	Percent Black	Percent White	Percent Other	Percent Non-Hispanic	Percent Hispanic
Albert Hill Middle School	46.2%	46.4%	7.4%	93.0%	7.0%
Binford Middle School	70.1%	26.7%	3.2%	97.4%	2.6%
Boushall Middle School	52.8%	42.4%	4.7%	54.3%	45.7%
Elkhardt Thompson Middle School	53.8%	41.9%	4.2%	55.9%	44.1%
Lucille Murray Brown Middle School	73.3%	23.5%	3.2%	84.8%	15.2%
Martin Luther King Jr Middle School	96.5%	2.0%	1.5%	99.2%	0.8%
Thompson Middle School	77.5%	20.2%	2.2%	81.5%	18.5%
Thomas H Henderson Middle School	94.8%	4.0%	1.3%	97.5%	2.5%
<b>Total</b>	<b>70.9%</b>	<b>25.8%</b>	<b>3.4%</b>	<b>81.3%</b>	<b>18.7%</b>

Student counts are based on the 10/31/2018 RPS student database.



# Review of DRAFT Options

2019-20 MS Zone	2019-20 HS Zone	Total 6-8th Live and Attend-In	MS Attendance
Binford	Armstrong	2	2%
Binford	Jefferson	123	98%
Boushall	Armstrong	30	4%
Boushall	Wythe	692	96%
Brown	Huguenot	521	90%
Brown	Wythe	55	10%
Elkhardt-Thompson	Armstrong	110	14%
Elkhardt-Thompson	Huguenot	404	52%
Elkhardt-Thompson	Wythe	269	34%
Henderson	Armstrong	11	3%
Henderson	Jefferson	5	2%
Henderson	Marshall	304	95%
Hill	Armstrong	13	4%
Hill	Jefferson	180	56%
Hill	Marshall	127	40%
Martin Luther King Jr	Armstrong	605	100%

DRAFT Option 1 MS Zone	DRAFT Option 1 HS Zone	Total 6-8th Live and Attend-In	MS Attendance
Binford	Marshall	124	100%
Boushall	Wythe	500	100%
Brown	Huguenot	341	100%
Elkhardt	Huguenot	504	53%
Elkhardt	Wythe	442	47%
Henderson	Marshall	360	100%
Hill	Jefferson	159	48%
Hill	Marshall	170	52%
Martin Luther King Jr	Armstrong	562	100%
Thompson	Armstrong	119	28%
Thompson	Huguenot	96	22%
Thompson	Wythe	215	50%

DRAFT Option 2 MS Zone	DRAFT Option 2 HS Zone	Total 6-8th Live and Attend-In	MS Attendance
Binford	Jefferson	10	18%
Binford	Marshall	47	82%
Boushall	Wythe	306	100%
Brown	Huguenot	341	100%
Elkhardt	Huguenot	319	34%
Elkhardt	Wythe	623	66%
Henderson	Marshall	490	100%
Hill	Jefferson	266	100%
Martin Luther King Jr	Armstrong	562	100%
Thompson	Armstrong	145	23%
Thompson	Huguenot	281	45%
Thompson	Wythe	202	32%



# Review of DRAFT Options

Option	Total 6-8th Live and Attend In Students Impacted
Option 1	1124
Option 2	1524

MS Zone 2018-19	DRAFT Option 1 MS Zone	Total 6-8th Live and Attend In Students
Binford	Binford	124
Binford	Hill	3
Boushall	Boushall	456
Boushall	Elkhardt	320
Brown	Brown	341
Brown	Elkhardt	186
Brown	Thompson	68
Elkhardt-Thompson	Boushall	44
Elkhardt-Thompson	Elkhardt	440
Elkhardt-Thompson	Thompson	330
Henderson	Henderson	329
Hill	Hill	326
Martin Luther King Jr	Henderson	31
Martin Luther King Jr	Martin Luther King Jr	562
Martin Luther King Jr	Thompson	32

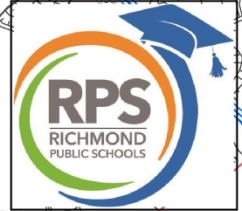
MS Zone 2018-19	DRAFT Option 2 MS Zone	Total 6-8th Live and Attend In Students
Binford	Binford	18
Binford	Hill	109
Boushall	Boushall	306
Boushall	Elkhardt	470
Brown	Brown	341
Brown	Elkhardt	13
Brown	Thompson	241
Elkhardt-Thompson	Elkhardt	459
Elkhardt-Thompson	Thompson	355
Henderson	Henderson	329
Hill	Binford	39
Hill	Henderson	130
Hill	Hill	157
Martin Luther King Jr	Henderson	31
Martin Luther King Jr	Martin Luther King Jr	562
Martin Luther King Jr	Thompson	32





# DRAFT Option 1 MS

Richmond Public Schools, VA  
Middle School Zones  
DRAFT Option 1



- Legend**
- |                     |                         |
|---------------------|-------------------------|
| Elementary          | DRAFT Option 1 MS Zones |
| Middle              | Boushall                |
| High                | Brown                   |
| Other               | Elkhardt                |
| 2018-19 MS Boundary | Henderson               |
|                     | Hill                    |
|                     | Martin Luther King Jr   |
|                     | Thompson                |



CropperGIS

Data Sources: Richmond PS; City of Richmond; ESRI  
Cartographer: ADM, June 2019.





# DRAFT Option 1 MS

All middle school options currently assume that Thompson Middle School will remain open. Please discuss this in small groups and give feedback on thoughts. Should we create an option to show the closure of Thompson Middle School for next meeting?

## Advantages

### **Division-Wide**

- Balance of middle school utilization provided.
- Improvement in MS to HS feeder splits (8 current vs. 4 in Opt. 1)
- Reduction in 3 way splits from MS to HS (currently there are 3 MS split to 3 HS vs. 1 in Option 1)
- Impacts fewer 6-8th grade students.

### **North**

- Martin Luther King Jr. stays entirely north of the James River.

### **South**

- Lucille Brown receives utilization relief.

## Limitations

### **Division-Wide**

- Low utilization across all middle schools (Avg 61%).

### **North**

- Henderson remains less than 50% utilized.

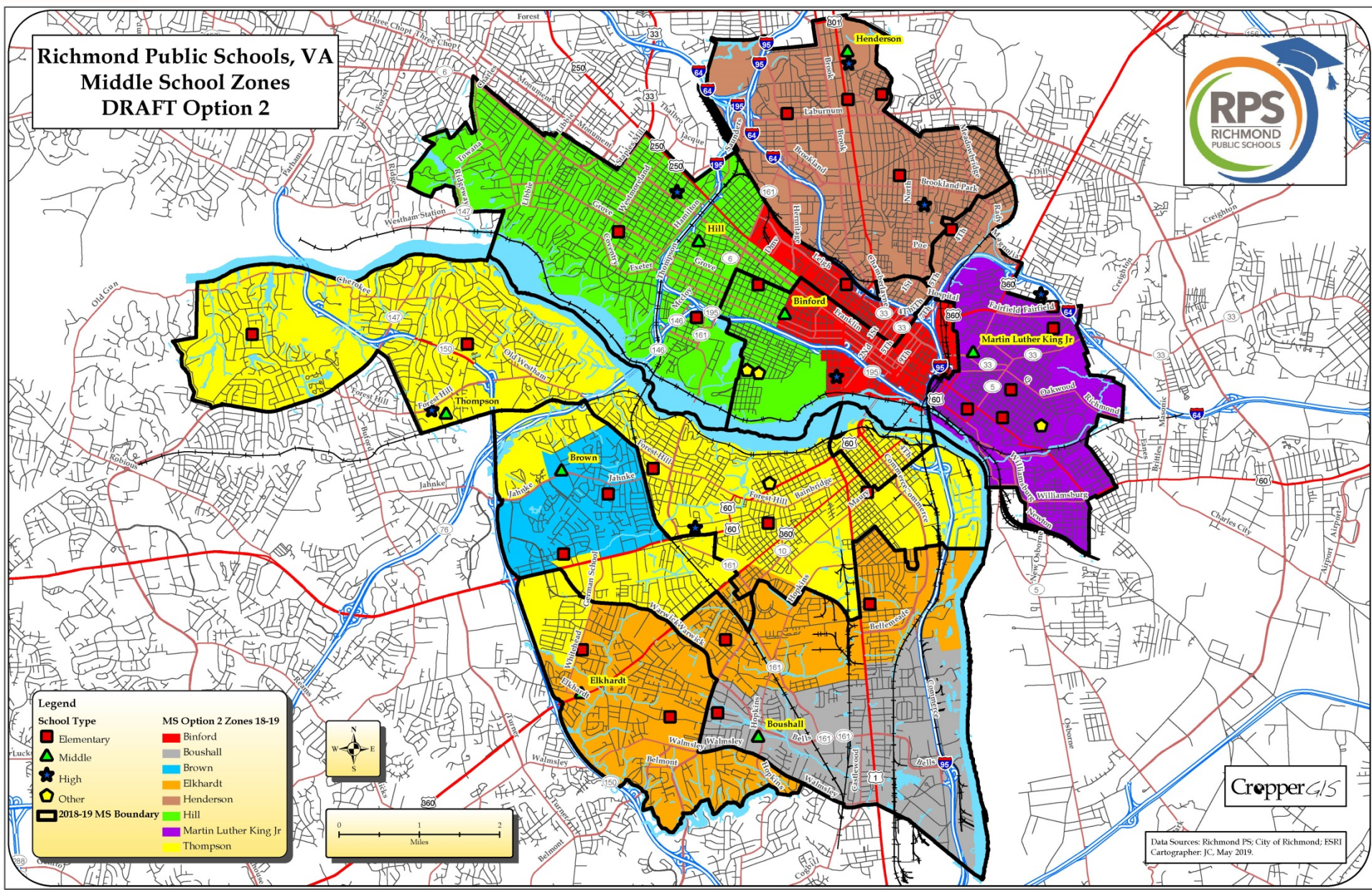
### **South**

- Thompson covers a large geographic area.



# DRAFT Option 2 MS

Richmond Public Schools, VA  
Middle School Zones  
DRAFT Option 2



CropperGIS

Data Sources: Richmond PS; City of Richmond; ESRI  
Cartographer: J.C. May 2019.





# DRAFT Option 2 MS

All middle school options currently assume that Thompson Middle School will remain open. Please discuss this in small groups and give feedback on thoughts. Should we create an option to show the closure of Thompson Middle School for next meeting?

## Advantages

### **Division-Wide**

- Balance of middle school utilization provided.
- Improvement in MS to HS feeder splits (8 current vs. 4 in Opt. 1)
- Reduction in 3 way splits from MS to HS (currently there are 3 MS split to 3 HS vs. 1 in Option 2)
- Impacts fewer 6-8th grade students.

### **North**

- Martin Luther King Jr. stays entirely north of the James River.

### **South**

- Lucille Brown receives utilization relief.

## Limitations

### **Division-Wide**

- Low utilization across all middle schools (Avg 61%).

### **North**

- Henderson remains less than 60% utilized.

### **South**

- Boushall MS at 38% utilization.
- Thompson MS still splits to 3 MS.
- Thompson covers a large geographic area.



# Review of DRAFT Options

High School	2018-19 Capacity	Total Enrolled	Option 1 Estimated Enrollment	Option 2 Estimated Enrollment
Armstrong High School	1255	847	738	746
George Wythe High School For The Arts	1401	1180	1279	1271
Huguenot High School	1426	1398	1333	1333
John Marshall High School	1391	643	920	765
Thomas Jefferson High School	1127	766	564	719
<b>Total</b>	<b>6600</b>	<b>4834</b>	<b>4834</b>	<b>4834</b>

Student counts are based on the 10/31/2018 RPS student database.

High School	2018-19 Capacity	Enrolled Utilization	Option 1 Utilization	Option 2 Utilization
Armstrong High School	1255	67%	59%	59%
George Wythe High School For The Arts	1401	84%	91%	91%
Huguenot High School	1426	98%	93%	93%
John Marshall High School	1391	46%	66%	55%
Thomas Jefferson High School	1127	68%	50%	64%
<b>Total</b>	<b>6600</b>	<b>73%</b>	<b>73%</b>	<b>73%</b>

Student counts are based on the 10/31/2018 RPS student database.



# Review of DRAFT Options

High School	Enrolled				
	Percent Black	Percent White	Percent Other	Percent Non-Hispanic	Percent Hispanic
Armstrong High School	95.9%	3.2%	0.9%	99.1%	0.9%
George Wythe High School For The Arts	54.2%	44.4%	1.4%	57.4%	42.6%
Huguenot High School	62.5%	35.9%	1.6%	71.3%	28.7%
John Marshall High School	90.2%	8.6%	1.2%	98.6%	1.4%
Thomas Jefferson High School	69.5%	28.1%	2.5%	93.7%	6.3%
<b>Total</b>	<b>71.1%</b>	<b>27.4%</b>	<b>1.5%</b>	<b>80.0%</b>	<b>20.0%</b>

High School	Option 1				
	Percent Black	Percent White	Percent Other	Percent Non-Hispanic	Percent Hispanic
Armstrong High School	96.1%	3.1%	0.8%	99.1%	0.9%
George Wythe High School For The Arts	55.2%	43.4%	1.4%	59.7%	40.3%
Huguenot High School	63.0%	35.5%	1.5%	70.9%	29.1%
John Marshall High School	87.3%	11.3%	1.4%	98.6%	1.4%
Thomas Jefferson High School	67.4%	29.8%	2.8%	92.0%	8.0%
<b>Total</b>	<b>71.1%</b>	<b>27.4%</b>	<b>1.5%</b>	<b>80.0%</b>	<b>20.0%</b>

High School	Option 2				
	Percent Black	Percent White	Percent Other	Percent Non-Hispanic	Percent Hispanic
Armstrong High School	96.0%	3.2%	0.8%	99.1%	0.9%
George Wythe High School For The Arts	55.0%	43.6%	1.4%	59.4%	40.6%
Huguenot High School	63.0%	35.5%	1.5%	70.9%	29.1%
John Marshall High School	88.6%	9.8%	1.6%	98.4%	1.6%
Thomas Jefferson High School	70.2%	27.4%	2.4%	93.6%	6.4%
<b>Total</b>	<b>71.1%</b>	<b>27.4%</b>	<b>1.5%</b>	<b>80.0%</b>	<b>20.0%</b>

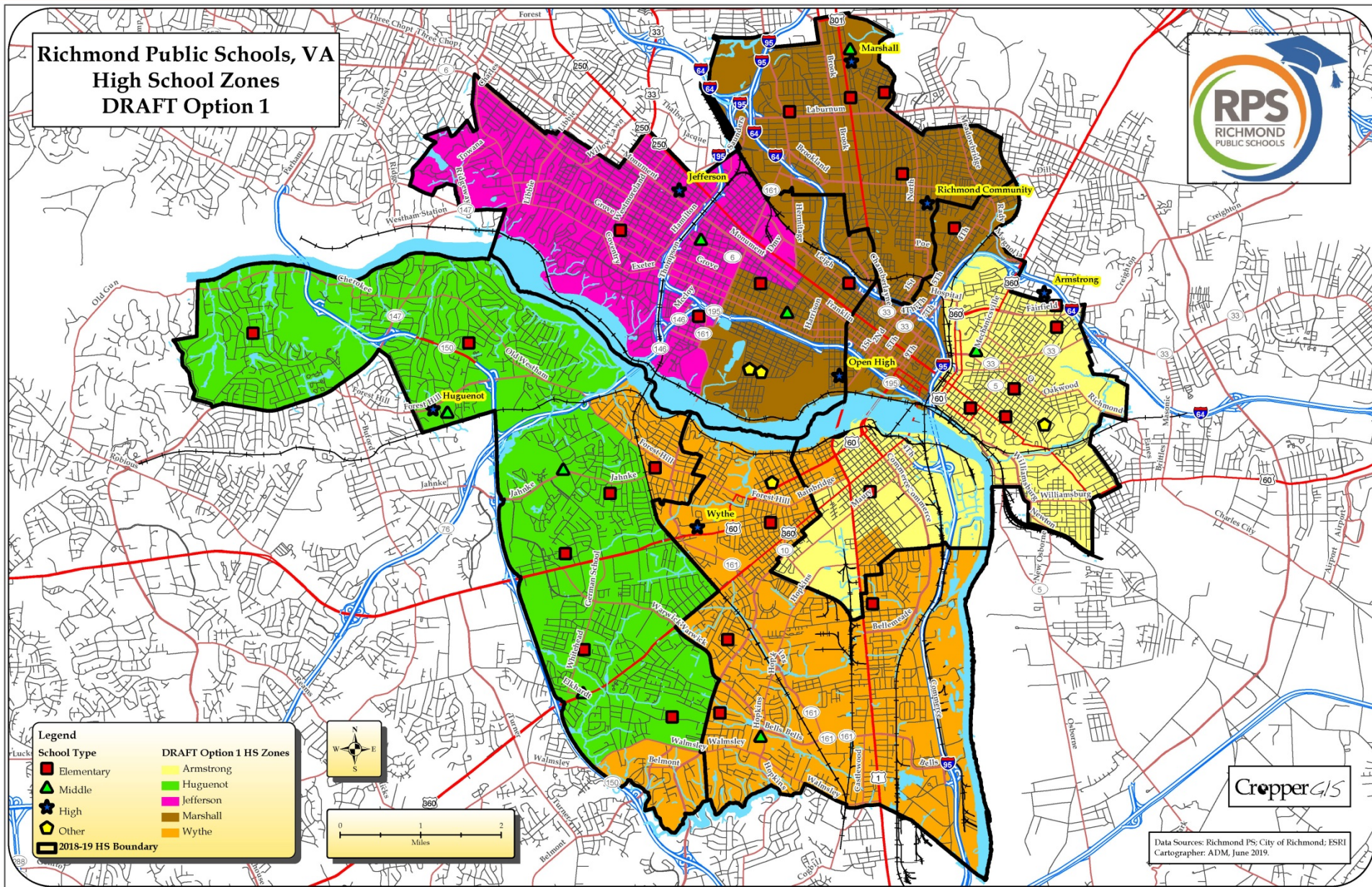
# Review of DRAFT Options

Option	Total 9-12th Live and Attend In Students Impacted
Option 1	298
Option 2	155

HS Zone 2018-19	DRAFT Option 1 HS Zone	Total 9-12th Live and Attend In Students
Armstrong	Armstrong	681
Armstrong	Marshall	57
Armstrong	Wythe	61
Huguenot	Huguenot	941
Huguenot	Wythe	26
Jefferson	Jefferson	159
Jefferson	Marshall	154
Marshall	Marshall	443
Wythe	Wythe	1070

HS Zone 2018-19	DRAFT Option 2 HS Zone	Total 9-12th Live and Attend In Students
Armstrong	Armstrong	707
Armstrong	Marshall	57
Armstrong	Wythe	35
Huguenot	Huguenot	941
Huguenot	Wythe	26
Jefferson	Jefferson	276
Jefferson	Marshall	37
Marshall	Marshall	443
Wythe	Wythe	1070







## Advantages

### **North**

- Marshall up to 66% utilized.
- Improvement in the demographics of Marshall HS.

### **South**

- Huguenot gets some utilization relief

## Limitations

### **North**

- Armstrong loses enrollment to align feeder patterns.
- Thomas Jefferson at 50% utilization.

### **South**

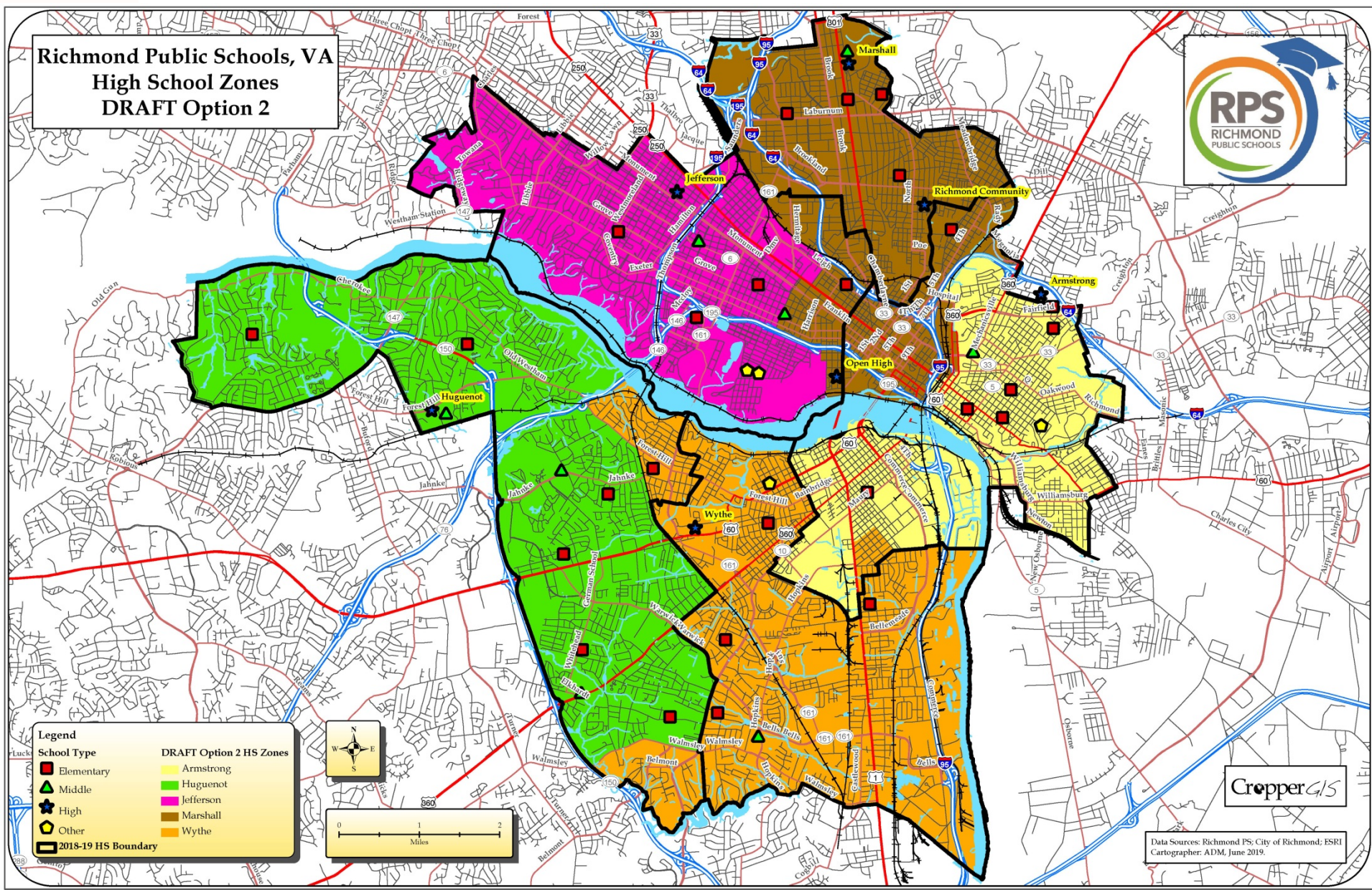
- Wythe and Huguenot remain over 90% utilized.





# DRAFT Option 2 HS

Richmond Public Schools, VA  
High School Zones  
DRAFT Option 2



**Legend**

Elementary	DRAFT Option 2 HS Zones
Middle	Huguenot
High	Jefferson
Other	Marshall
2018-19 HS Boundary	Wythe

North Arrow

0 1 2 Miles

CropperGIS

Data Sources: Richmond PS; City of Richmond; ESRI  
Cartographer: ADM, June 2019.



## Advantages

### **North**

- Marshall up to 55% utilized.

### **South**

- Huguenot gets some utilization relief

## Limitations

### **North**

- Armstrong loses enrollment to align feeder patterns.
- Thomas Jefferson at 50% utilization.

### **South**

- Wythe and Huguenot remain over 90% utilized.





# Small Group Exercise

**Break into small groups**

**Each group will have time to review the DRAFT options**

**Groups have markers and post-it notes, and are encouraged to write, circle, highlight any area on the map they feel needs to be addressed**

**After each group reviews both options, there will be a discussion around findings/observations.**

**\*Please note your additional questions on the notepads at your table. We will collect those and follow up.**



**Next Meeting is Tuesday, July 30th.**

**6:00pm @ Thomas Jefferson High School  
Media Center**