



2025-26 Redistricting Study

Public Information Session 2
March 4, 2026

*Presented by: Scituate Public Schools and
Cropper GIS Consulting*

Welcome and Introductions

Introductions

Nicole Brandolini, Chair, Scituate School Committee

Maria Fenwick, Vice Chair, Scituate School Committee

Thomas Raab, Interim Superintendent

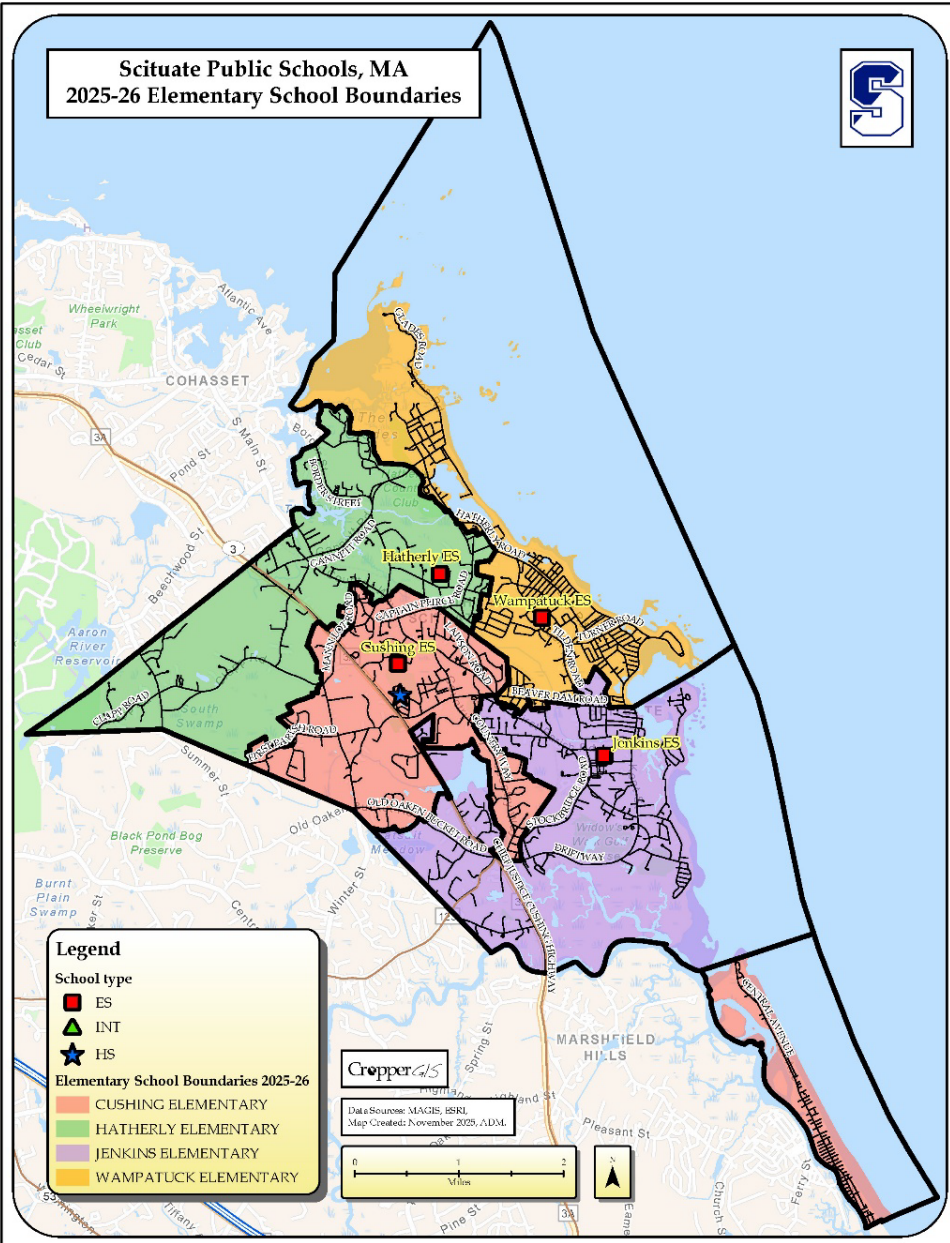
Ryan Lynch, Assistant Superintendent

Matthew Cropper, GIS Consulting

History of The Project

- Configuration Study beginning in 2016
- Scituate values neighborhood schools
- A comprehensive analysis of Cushing and Hatherly was done to assess the level of need in each building
- MSBA approval Winter 2024
- Town Meeting and Ballot Vote Spring 2024
- Since then, the project has been on time and \$14 million dollars under budget

Overview



- 4 Elementary Schools to 3 Schools
- Geography *and* Education
 - staff preparation
 - curriculum
- Expert process based on local needs
- Consistent student population in 2027-2028 and beyond
- Consistent class sizes (20 students)
- Accounting for “bubbles” and incremental growth if needed

The Facilitator

Cropper GIS Consulting, LLC

- K-12 school planning is our business and our passion. Our specialty is facilitating redistricting studies.
- Cropper GIS works with K-12 school districts to:
 - Develop redistricting strategies
 - Facilitate community engagement
 - Perform demographic studies
 - Prepare long-range facility master plans
 - Conduct housing and pupil yield-factor studies

Matthew Cropper, Cropper GIS

- 25+ years experience providing GIS mapping and analysis services to school districts and other clients
- Facilitated boundary change study projects across the U.S.
- Published numerous times on topics related to K-12 facility and redistricting processes

Tonight's Purpose

- **Learn** how the redistricting study has been working.
- **Review DRAFT** boundary options for the Elementary schools in the district and speak directly with Internal Planning Team (IPT) members.
- **Complete** online survey related to the options to provide valuable input to the IPT.

Redistricting Study

Cropper GIS Consulting was hired by Scituate Public Schools to facilitate and manage the project. Our firm is tasked to:

- A. **Develop** supporting materials to help facilitate the study.
- B. **Implement** an expert-based process of developing a student redistricting plan.
- C. **Empower** the community throughout the process.
- D. **Leverage** expertise to develop logical, efficient, and effective student redistricting options with the planning team.
- E. **Recommend** a redistricting plan to the School Committee.

Stakeholders

Outline of Stakeholder Responsibilities	
Consultant	<ul style="list-style-type: none"> <input type="checkbox"/> Schedule and facilitate Internal Planning Team meetings. <input type="checkbox"/> Communicate updates with planning team, including updated handout and meeting schedule logistics. <input type="checkbox"/> Conduct public meetings to solicit feedback related to draft options that are under consideration. <input type="checkbox"/> Support the district in providing materials such as presentations, handouts, and online interactive maps for the public's consumption. <input type="checkbox"/> Coordinate and summarize online feedback received from general public and internal planning team.
Internal Planning Team	<ul style="list-style-type: none"> <input type="checkbox"/> Consists of key SPS district administrators including central office, senior leadership, and department staff personnel. <input type="checkbox"/> Group will work to review draft options that are being developed in preparation to share with the School Committee and public. <input type="checkbox"/> Review input provided from the consultant and general public regarding draft options and continue to modify maps with a focus on the best solution for all students as a whole. <input type="checkbox"/> Share a redistricting plan with the School Committee.
General Public	<ul style="list-style-type: none"> <input type="checkbox"/> Informed through website. <input type="checkbox"/> Invited to submit comments and input throughout the entire process. <input type="checkbox"/> Invited to participate in public information sessions and to provide input via surveys and online general feedback form.
School Committee	<ul style="list-style-type: none"> <input type="checkbox"/> Charge internal planning team with its responsibilities. <input type="checkbox"/> Identify questions the IPT is expected to answer. <input type="checkbox"/> Advise staff and the process regarding policy-related considerations and other committee-level decisions. <input type="checkbox"/> Vote on a redistricting plan.

Timeline

Process & Timeline for Redistricting

	Nov. '25	Dec. '25	Jan. '26	Feb. '26	March '26	April '26
<i>Data Collection</i>						
<i>Data Analysis / Assimilation</i>						
<i>Baseline Options Development</i>						
<i>Internal Planning Team Work (1-2 meetings per month)</i>						
Public Information Session #1 : Present Project Process, Criteria, Timeline, and Redistricting Objectives to Community. Web-based meeting.		12/9 @ 6pm				
Public Information Session #2: Present DRAFT Redistricting Options to General Public for Comment/Feedback. On-site meeting to review options and q/a at end of session.				03/4 @ 6pm		
<i>Presentation of Final Recommendations to the School Committee</i>					3/30	
<i>School Committee Votes on Redistricting Plan</i>						4/27

Project Objectives

With direction from the School Committee, Scituate Public Schools (SPS) is launching a redistricting and student-assignment study to prepare for the Fall 2027 opening of the New Elementary School on the Hatherly school site.

The district is also discontinuing the use of the current Cushing Elementary site, and the primary objective is to balance K-5th grade enrollment across the district's three elementary schools: New School, Wampatuck ES, and Jenkins ES.

Pre-K students from across the district will attend the new school.

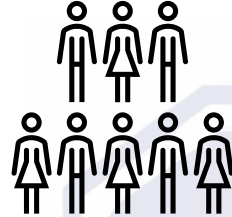
We are tasked with meeting the following objectives:

- Establish the elementary school attendance areas among the district's three schools (New School, Wampatuck, and Jenkins) for the Fall 2027 school year.

Redistricting Criteria



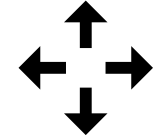
- Balance school facility utilization – Make every effort to have equitable utilization (where possible) across the district and in accordance with school capacities. Make efficient use of available space.



- Consider economic, cultural, and ethnic diversity – Ensure schools are inclusionary and not adversely affected by enrollment decisions.



- Maximize busing efficiencies in transportation of students – Make every effort to account for transportation (school bus and car rider), parent commuting patterns, balance busing travel time, and costs.



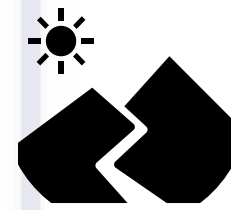
- Minimize impact on students -Attempt to minimize the number of students impacted when making boundary adjustments Impact on specialized school programs or a change to school capacity.



- Make every effort to establish contiguous zones – Avoid creating zones that are not connected to the primary attendance zone, where possible.



- Ensure that planning is done with an overall focus on what is the safest and most secure plan for all students in the district.



- Use major roads and natural boundaries wherever feasible to define attendance zones – Minimize the number of students who need to cross major intersections and other barriers to maximize the safety and security of students.

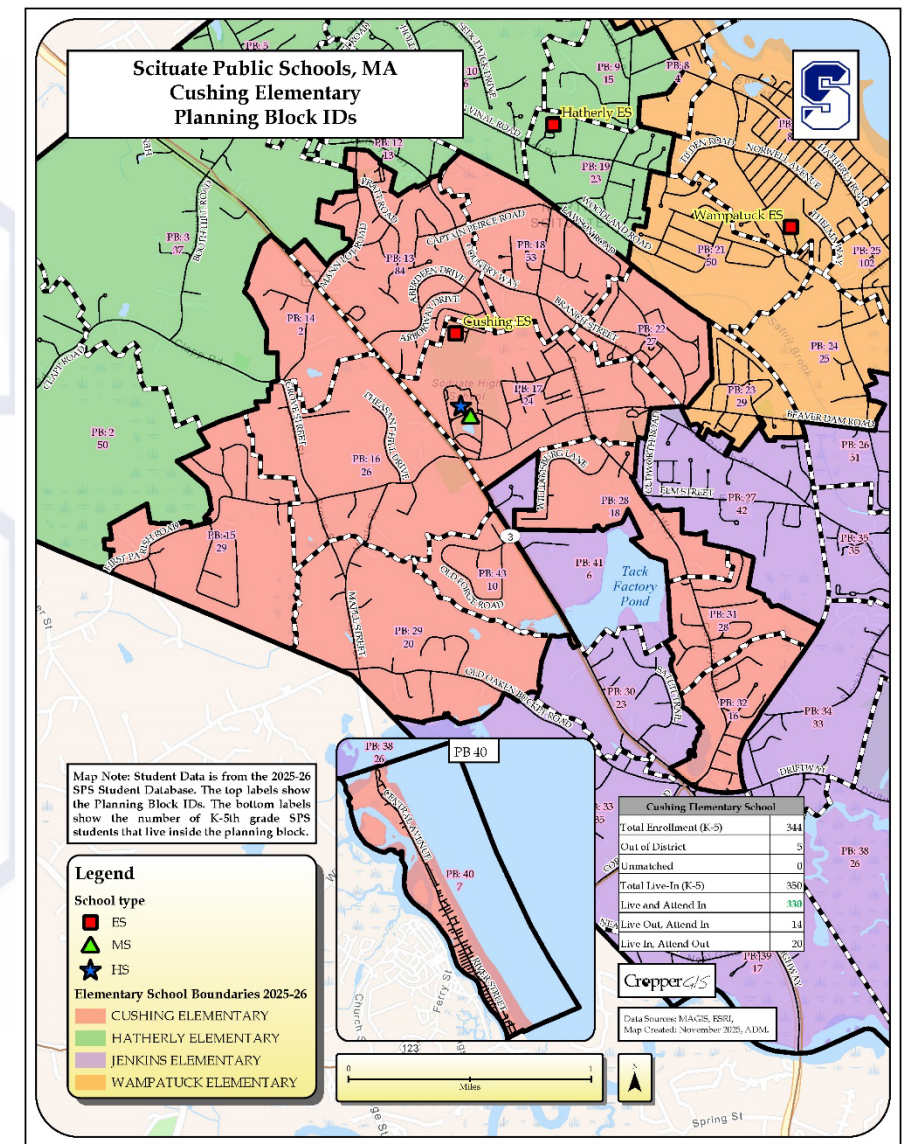


- Account for future economic growth to Allow for increasing attendance in high growth areas.

Interpreting Maps

Planning Blocks: small areas for examining student populations:

- Map titles and notes clarify what each planning block map represents.
- Labels within planning blocks represent one of the following:
 - Planning block ID (PB #) Map Note: Based on Fall 2025 Student Enrollment. The top labels show the Planning block ID (PB #). The bottom labels show the number of K-5th grade SPS students that live in that planning block area.



Current School Capacity

School	2025-26 Capacity	2025-26 Enrollment	Estimated Utilization	
		Total Enrollment	+ / -	%
Cushing Elementary School	460	344	-116	74.8%
Hatherly Elementary School	420	276	-144	65.7%
Jenkins Elementary School	420	335	-85	79.8%
Wampatuck Elementary School	480	330	-150	68.8%
	1,780	1,285	-495	72.2%

Capacity – Total number of students who fit all four schools at class size of 20.

Enrollment – Actual Number of students enrolled.

The planned capacity for 2027-28 is the primary focus for this redistricting work. Current enrollment, capacity, and utilization were calculated to give an understanding of how schools are used now vs. with the new plan.

Class size assumptions, room usage, and program spaces for students were evaluated for all schools for the study, resulting in adjustments to total capacity for Jenkins and Wampatuck Elementary Schools.

This enables the district to operate their elementary schools more efficiently without too much excess space.

September 2027

Estimated Enrollment, Over/Under Capacity, & Utilization Tables

School	Capacity		2025-26			2027-28 Estimated Utilization					
	2025-26	2027-28	Total Enrollment	+/-	%	Option I			Option II		
						Estimated Enrollment	+/-	%	Estimated Enrollment	+/-	%
Cushing Elementary (Discontinued)	460		344	-116	74.8%						
New ES (@ Hatherly Site)	420	480	276	-144	65.7%	456	-24	95.0%	456	-24	95.0%
Jenkins Elementary School	420	440	335	-85	79.8%	418	-22	95.0%	432	-8	98.2%
Wampatuck Elementary School	480	440	330	-150	68.8%	432	-8	98.2%	418	-22	95.0%
	1780	1360	1285	-495	72.2%	1306	-54	96.0%	1306	-54	96.0%

Utilization refers to how close are to our target class sizes. Our target class size is 20.
 Estimated enrollment 2027-2028 is our current enrollment aged two years.

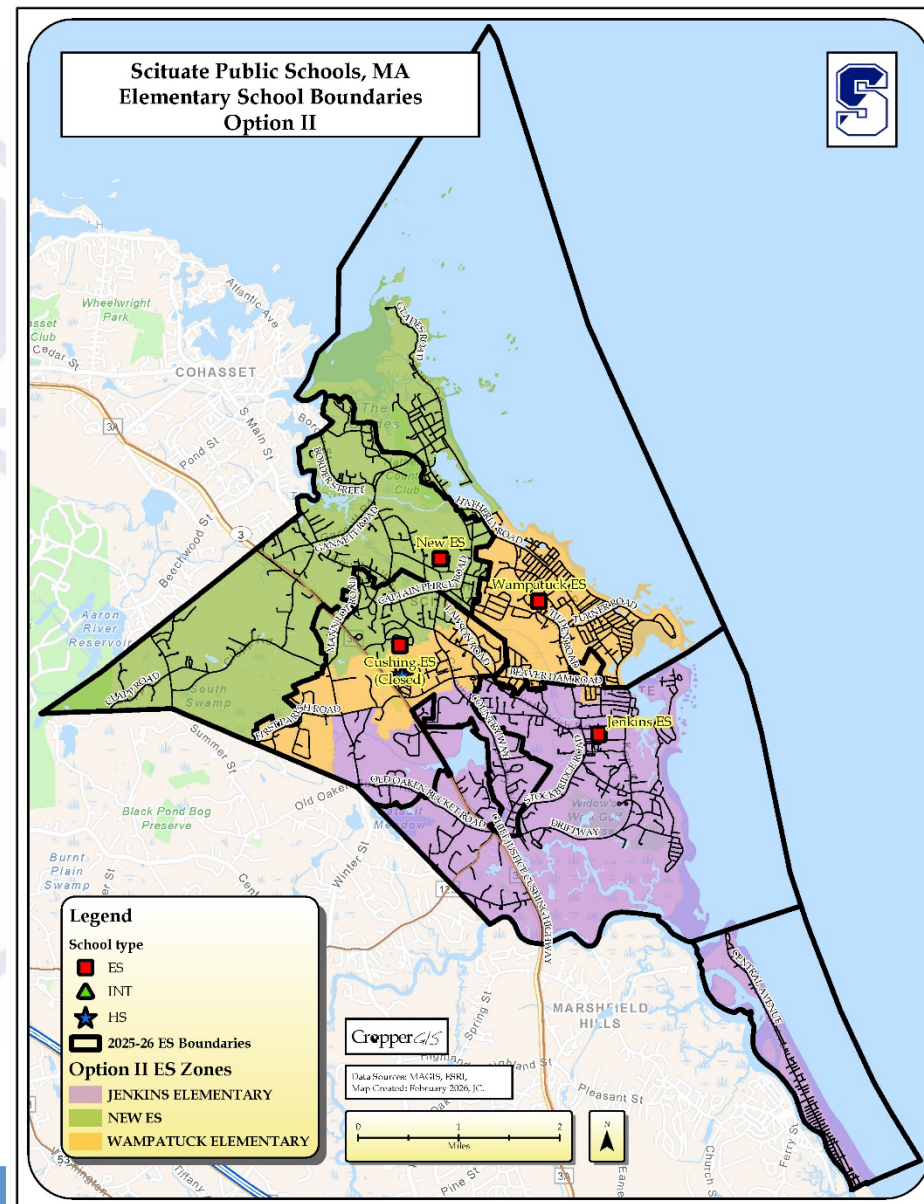
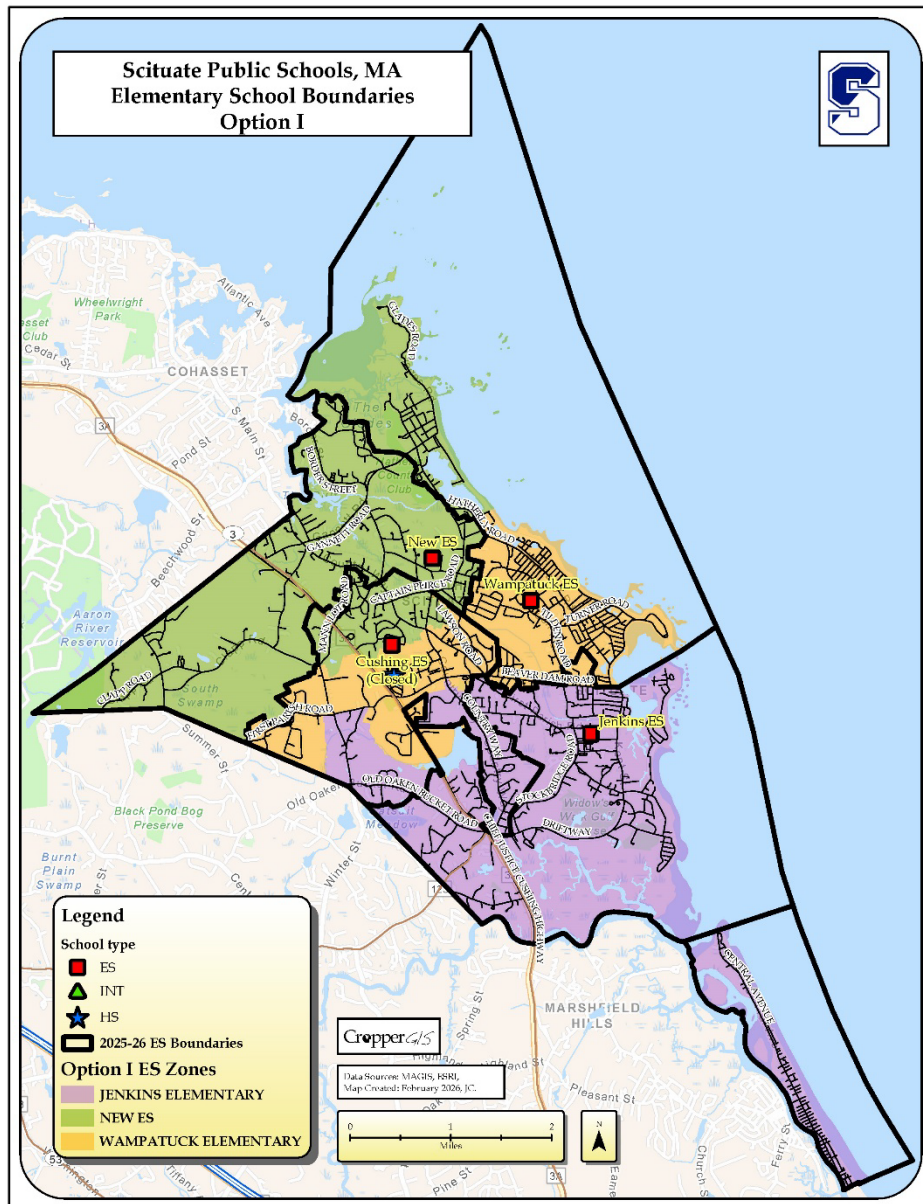
Work done to date

- Data and information examined includes school enrollment (grade level, attending school and counts in neighborhoods, demographics), school capacity, zoning maps, & forecasted trends.
- Meetings with staff and IPT members to review relevant data and draft options for consideration.
- Options are considered DRAFT throughout the process; continued dialog and consideration of data is always encouraged.

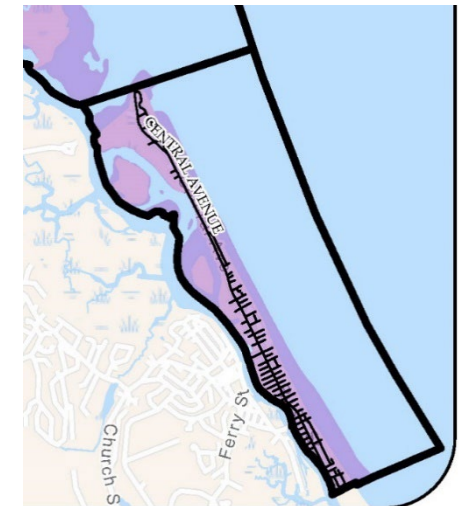
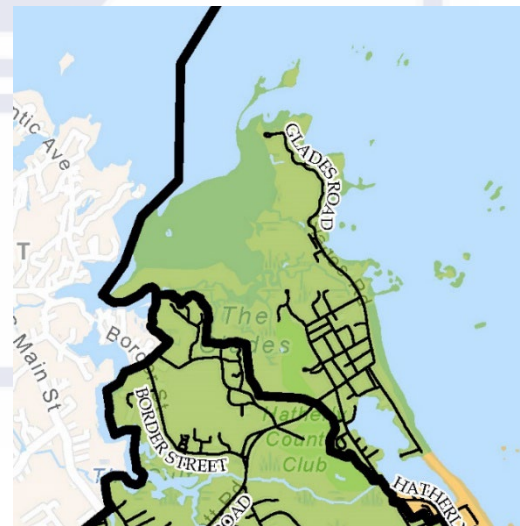
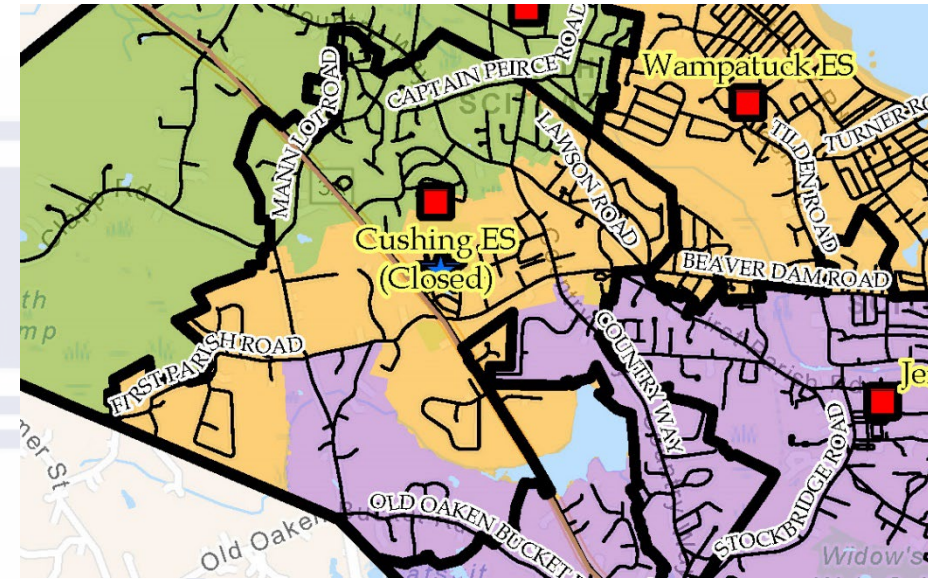
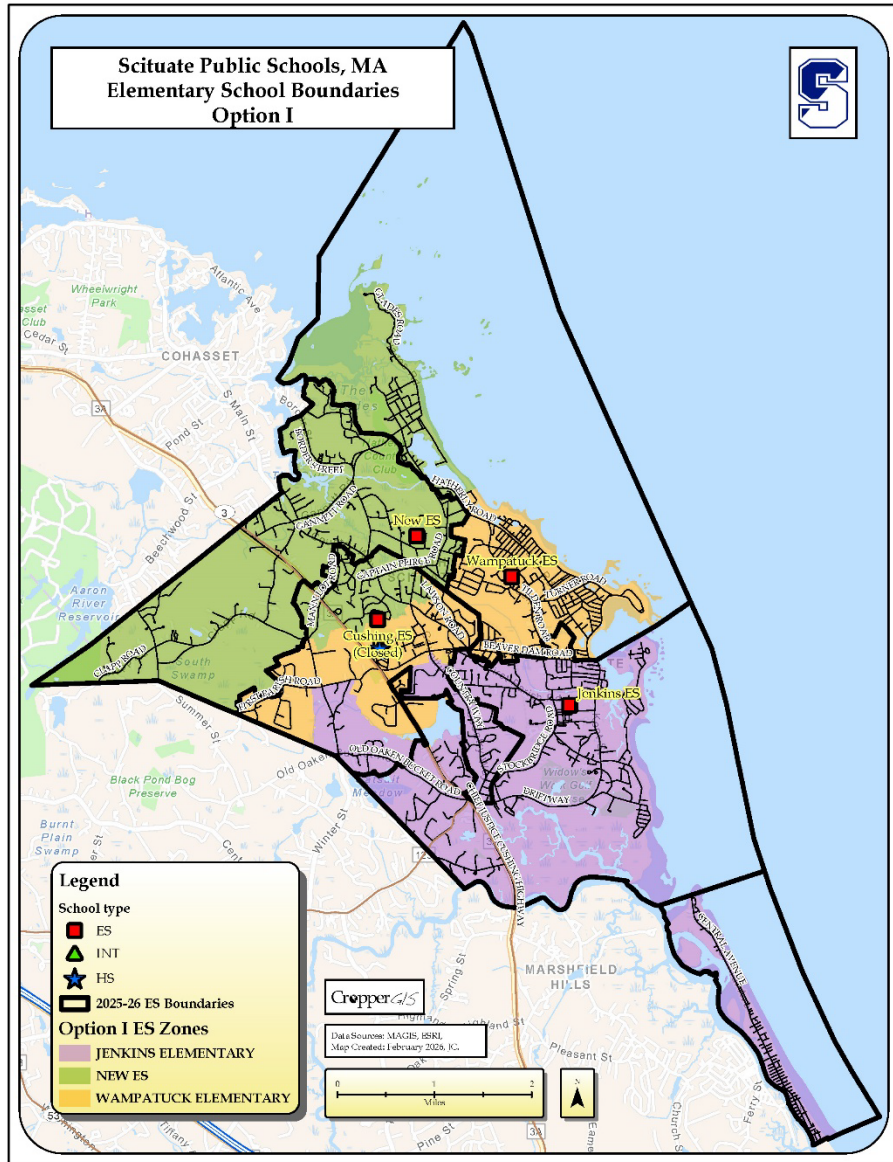
Work done to date

- IPT's charge is to recommend one option to present to the School Committee.
- Nothing will be FINAL until the School Committee votes on a plan.

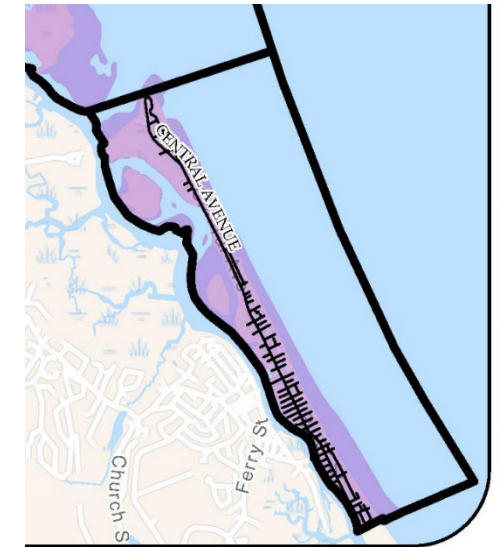
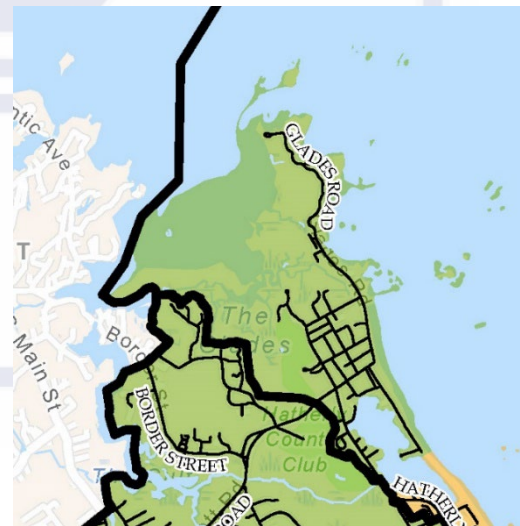
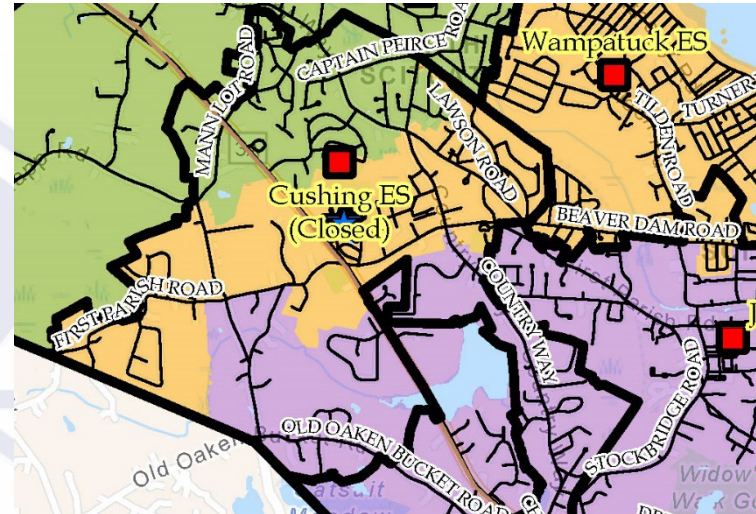
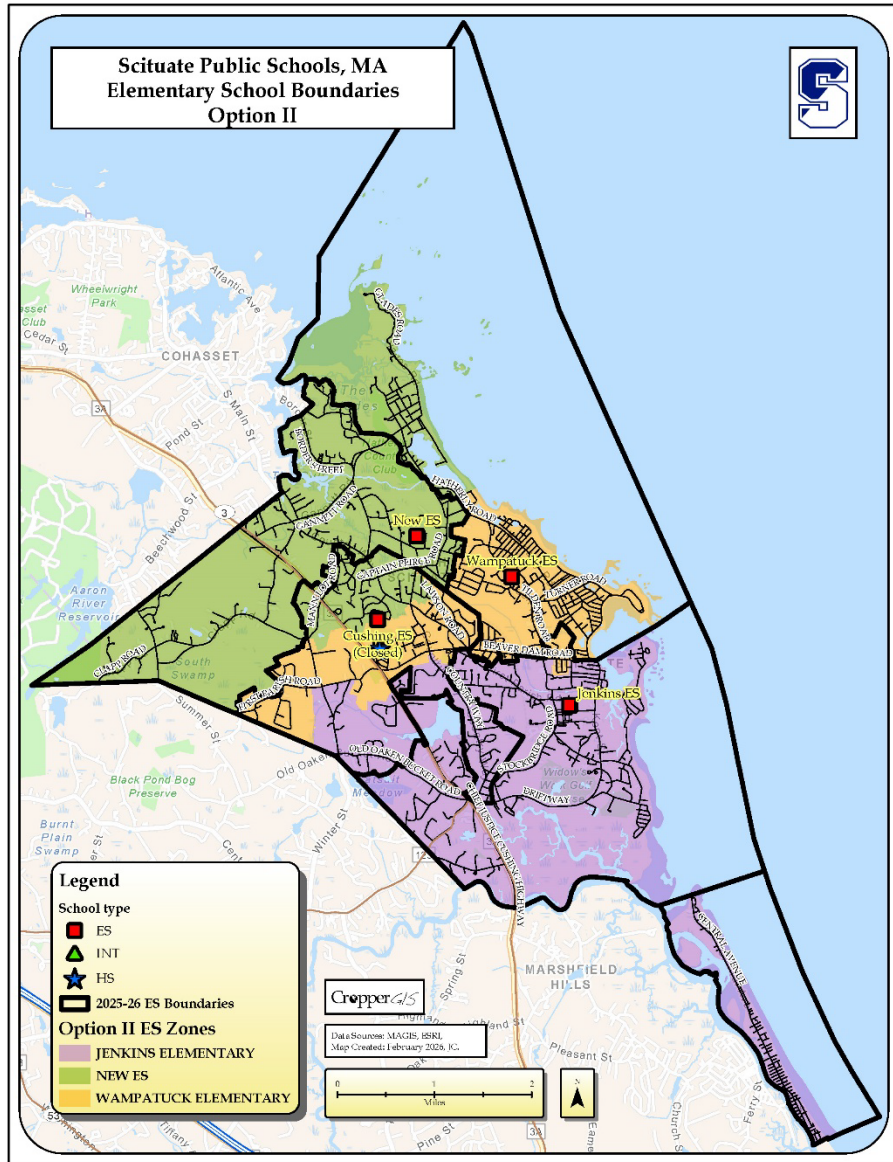
Options Presented Tonight



DRAFT Option I ES Zones



DRAFT Option II ES Zones



Interpreting Tables

- Statistics that are pertinent to the study are made available to accompany the large maps.
- The data shown is the data the IPT uses to evaluate options.

Interpreting Tables

Impact Tables

Student Impact Estimates	
Name	Estimated Number of Students Impacted
Option I	666
Option II	664

2025-26 Elementary Boundaries	Option I Elementary Boundaries	Estimated Number of Students Impacted
CUSHING ELEMENTARY	JENKINS ELEMENTARY	99
CUSHING ELEMENTARY	NEW ES	129
CUSHING ELEMENTARY	WAMPATUCK ELEMENTARY	116
HATHERLY ELEMENTARY	NEW ES	262
JENKINS ELEMENTARY	JENKINS ELEMENTARY	299
JENKINS ELEMENTARY	WAMPATUCK ELEMENTARY	18
WAMPATUCK ELEMENTARY	NEW ES	42
WAMPATUCK ELEMENTARY	WAMPATUCK ELEMENTARY	294

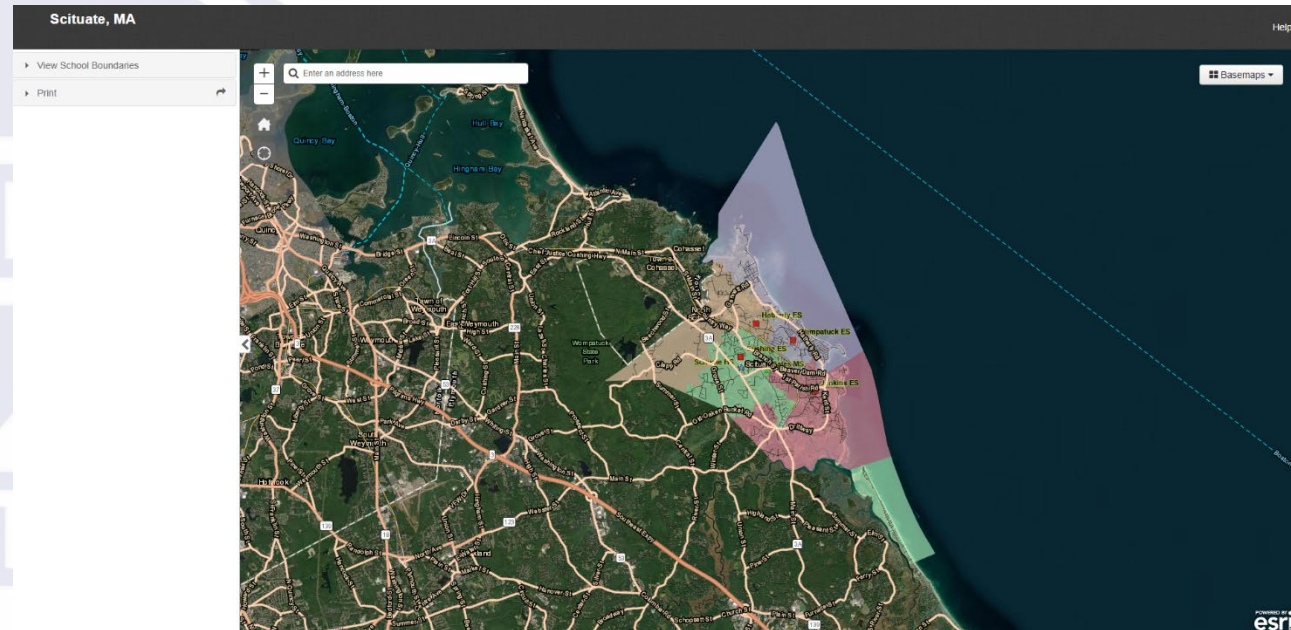
DRAFT Option I shown as sample. All tables included in handout.

Key: **White** represents K-5th grade “Live In” students who live in the boundary and are not impacted by the option.

Blue represents the number of K-5th grade “Live In” students who live in the boundary and are impacted by the option.

Review of DRAFT Options

- 8.5"x11" maps, as well as plots of maps are available for review
- Option maps are also now on interactive Web
- Copies of the handouts, including small and large format maps are posted on the Redistricting Study Website:
www.scituateredistricting.com



- *Detailed Review of Maps*– the end of the presentation will include a Q&A to answer any questions about the DRAFT Options and related data with members of the public.
- IPT members, Scituate Staff, and consultant will be available after the presentation to answer questions the public may have
- Although answering any questions the night of the meeting is very important, please submit your feedback via the comment form on the Redistricting study website and/or via the online survey for the entire IPT's benefit

Stay Informed – Provide Feedback

- Visit the Redistricting Study Web site at www.scituateredistricting.com
- Participate in an Online Survey from Mar. 4 – Mar. 15, 2026
 - Link is located on www.scituateredistricting.com or you can go directly [HERE](#)
 - You can also access the survey by referencing the QR code on this slide.
 - Available to translate to multiple languages.
 - Survey can be taken on any PC/Apple/mobile device with Internet access
- Although the formatted survey is preferred, you can also submit comments via the online [Scituate Redistricting General Feedback Form](#)
- Presentation of a Recommendation to the School Committee is scheduled on March 30th, 2026.
 - Also available via zoom, link here:
<https://us06web.zoom.us/j/81741467293?pwd=N7UkqF8xt4di21LQJ6Nli4jJp2RAXZ.1>





Thank You for your time and
participation!

