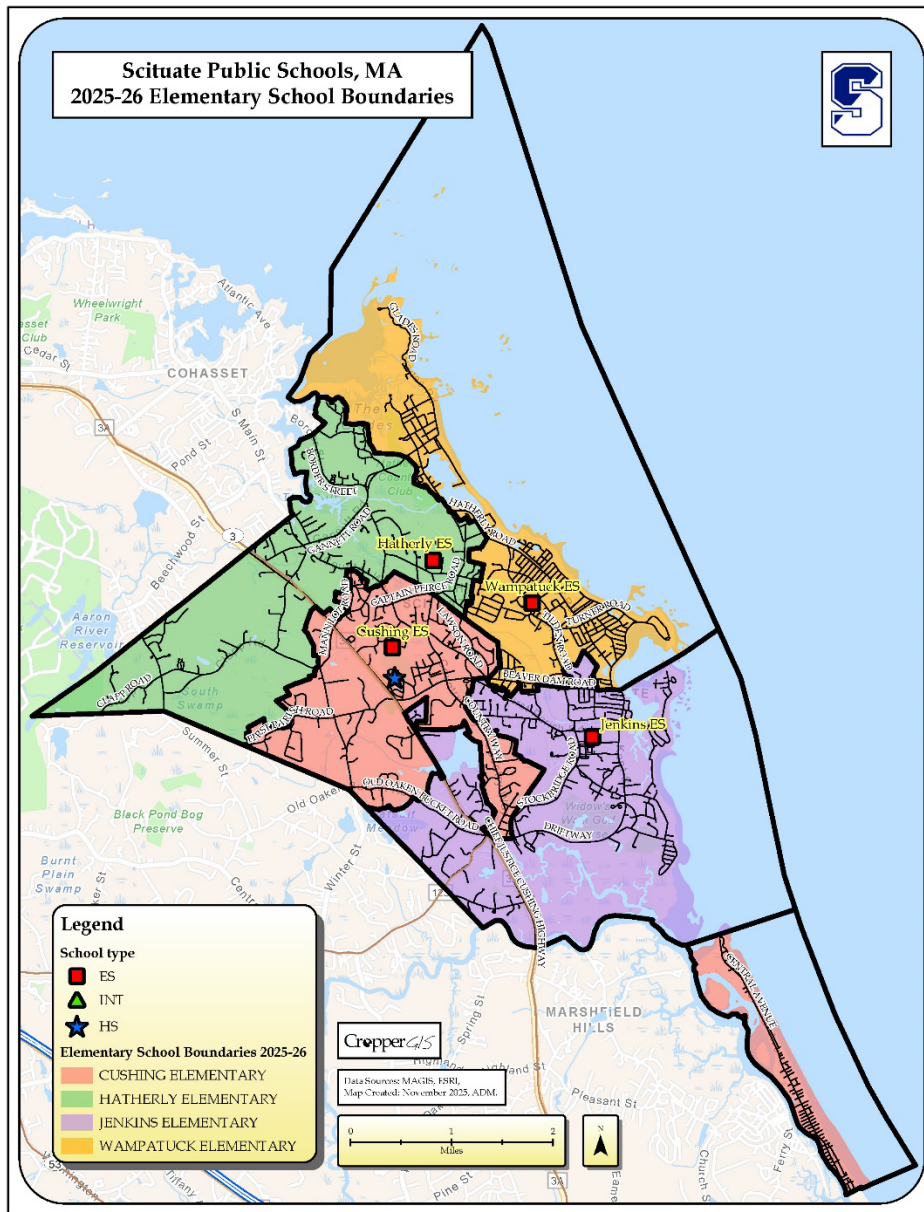




DRAFT Boundary Options I-III and Statistics





2025-26 Capacity, Official Enrollment, and Building Utilizations

The following document contains a series of tables that depict statistics for current schools and boundaries that are being evaluated. This information will help inform all stakeholders on how schools could be potentially impacted as a result of potential enrollment adjustments. The current student enrollment numbers were derived from the district’s 2025-26 Student Database dated October 2025. For estimated enrollment purposes, it is assumed that Cushing Elementary will be discontinued and no longer used for educational instruction. There will be a New Elementary School constructed on the Hatherly site as well that will have a brick-and-mortar capacity of 480. The anticipated implementation year for the boundaries is Fall 2027.

Glossary of Terms

Capacity -the number of students that an individual school has the physical capacity to enroll and can be reasonably accommodated in a facility.

Utilization - Utilization is the total enrollment divided by the capacity, described as a percentage.

Utilization Key
Within 10
Between 10 - 15%
Over / Under 15%

Live In students - Students residing inside of a school attendance boundary, regardless of where that student attends school.

Out of District students - Students residing outside of the district’s boundary but attending a school within the district.



2025-26 Current Enrollment and Utilization Tables

The following tables show the utilization by percentage based on current enrollment and 2025-26 building capacity.

School	2025-26 Capacity	2025-26 Enrollment						Total Enrollment	Estimated Utilization		Total Live-In	Out of District
		K	1	2	3	4	5		+/-	%		
Cushing Elementary School	460	51	56	55	72	62	48	344	-116	74.8%	350	5
Hatherly Elementary School	420	49	61	51	43	36	36	276	-144	65.7%	262	6
Jenkins Elementary School	420	50	57	55	65	47	61	335	-85	79.8%	311	13
Wampatuck Elementary School	480	50	56	40	65	61	58	330	-150	68.8%	336	2
	1,780	200	230	201	245	206	203	1,285	-495	72.2%	1259	26



DRAFT Options I-III

The following tables present DRAFT options for the Internal Planning Team's (IPT) review. Both options aim to balance the K-5th grade enrollment across the district's three elementary schools: the New Elementary School located on the Hatherly site, Wampatuck ES, and Jenkins ES. Cushing Elementary will be discontinued in these estimates. Any of the following options can be changed based on feedback from the IPT, public, and district administration.



DRAFT Options I-III Enrollment and Utilization Estimates

The following tables reflect the DRAFT options estimated enrollment and utilization estimates. The estimated enrollment is calculated by adding the total students served that “Live In” a school zone within each new DRAFT Option boundary, plus the current 2025-26 Out of District students attending that school. It is assumed for estimation purposes that the out of district students currently attending Hatherly and Cushing Elementary will be attending the New Elementary School in these Options. Utilizations are calculated by dividing the estimated enrollment counts by the option capacity, described as a percentage to show how “full” a school is.

School	2027-28 Capacity	Elementary Option I : 2027-28 Estimated Enrollment							Estimated Utilization	
		K	1	2	3	4	5	Total Enrollment	+ / -	%
Cushing Elementary (Discontinued)										
New ES (@ Hatherly Site)	480	74	74	70	82	78	78	456	-24	95.0%
Jenkins Elementary School	440	69	69	60	70	68	82	418	-22	95.0%
Wampatuck Elementary School	440	72	72	70	78	55	85	432	-8	98.2%
	1360	215	215	200	230	201	245	1306	-54	96.0%

School	2027-28 Capacity	Elementary Option II : 2027-28 Estimated Enrollment							Estimated Utilization	
		K	1	2	3	4	5	Total Enrollment	+ / -	%
Cushing Elementary (Discontinued)										
New ES (@ Hatherly Site)	480	74	74	70	82	78	78	456	-24	95.0%
Jenkins Elementary School	440	71	71	62	74	71	83	432	-8	98.2%
Wampatuck Elementary School	440	70	70	68	74	52	84	418	-22	95.0%
	1360	215	215	200	230	201	245	1306	-54	96.0%

School	2027-28 Capacity	Elementary Option III : 2027-28 Estimated Enrollment							Estimated Utilization	
		K	1	2	3	4	5	Total Enrollment	+ / -	%
Cushing Elementary (Discontinued)										
New ES (@ Hatherly Site)	480	77	77	74	85	82	81	476	-4	99.2%
Jenkins Elementary School	440	71	71	62	74	71	85	434	-6	98.6%
Wampatuck Elementary School	440	67	67	64	71	48	79	396	-44	90.0%
	1360	215	215	200	230	201	245	1306	-54	96.0%

Note: Estimates have been aged to depict a 2027-28 enrollment. Current 2025-26 students living in each zone were aged 2 years and the K-1 grade students were calculated by taking an average of the grade level counts for each option.



DRAFT Options I-III Enrollment and Utilization Estimates (Continued)

Presenting the scenarios side-by-side helps visualize how an individual school changes in each plan. This data is the same as the tables on pages 1-2.

School	Capacity		2025-26			2027-28 Estimated Utilization									
	2025-26	2027-28	Total Enrollment	+/-	%	Option I			Option II			Option III			
						Estimated Enrollment	+/-	%	Estimated Enrollment	+/-	%	Estimated Enrollment	+/-	%	
Cushing Elementary (Discontinued)	460		344	-116	74.8%										
New ES (@ Hatherly Site)	420	480	276	-144	65.7%	456	-24	95.0%	456	-24	95.0%	476	-4	99.2%	
Jenkins Elementary School	420	440	335	-85	79.8%	418	-22	95.0%	432	-8	98.2%	434	-6	98.6%	
Wampatuck Elementary School	480	440	330	-150	68.8%	432	-8	98.2%	418	-22	95.0%	396	-44	90.0%	
	1780	1360	1285	-495	72.2%	1306	-54	96.0%	1306	-54	96.0%	1306	-54	96.0%	



DRAFT Options I-III Student Demographics

School	2025-26 Enrolled Race				2025-26 Enrolled Lunch Status	
	White	African American	Asian	Native American or Pacific Islander	Free or Reduced	Paid Lunch
Cushing Elementary School	94.2%	3.2%	2.3%	0.3%	9.0%	91.0%
Hatherly Elementary School	93.1%	2.9%	3.6%	0.4%	10.1%	89.9%
Jenkins Elementary School	90.1%	6.9%	3.0%		11.0%	89.0%
Wampatuck Elementary School	95.8%	2.1%	1.8%	0.3%	9.4%	90.6%
	93.3%	3.8%	2.6%	0.2%	9.9%	90.1%

School	Elementary Option I : 2027-28 Race/Ethnicity				Elementary Option I Lunch Status	
	White	African American	Asian	Native American or Pacific Islander	Free or Reduced	Paid Lunch
Cushing Elementary (Discontinued)						
New ES (@ Hatherly Site)	92.6%	3.4%	3.6%	0.5%	9.5%	90.5%
Jenkins Elementary School	91.5%	6.3%	2.2%		10.7%	89.3%
Wampatuck Elementary School	95.8%	1.9%	2.1%	0.2%	9.5%	90.5%
	93.3%	3.8%	2.6%	0.2%	9.9%	90.1%

School	Elementary Option II : 2027-28 Race/Ethnicity				Elementary Option II Lunch Status	
	White	African American	Asian	Native American or Pacific Islander	Free or Reduced	Paid Lunch
Cushing Elementary (Discontinued)						
New ES (@ Hatherly Site)	92.6%	3.4%	3.6%	0.5%	9.5%	90.5%
Jenkins Elementary School	91.7%	6.1%	2.1%		10.4%	89.6%
Wampatuck Elementary School	95.7%	1.9%	2.2%	0.2%	9.8%	90.2%
	93.3%	3.8%	2.6%	0.2%	9.9%	90.1%

School	Elementary Option III : 2027-28 Race/Ethnicity				Elementary Option III Lunch Status	
	White	African American	Asian	Native American or Pacific Islander	Free or Reduced	Paid Lunch
Cushing Elementary (Discontinued)						
New ES (@ Hatherly Site)	93.0%	3.3%	3.3%	0.4%	8.3%	91.7%
Jenkins Elementary School	91.3%	6.1%	2.6%		10.3%	89.7%
Wampatuck Elementary School	95.7%	2.0%	2.0%	0.3%	11.3%	88.7%
	93.3%	3.8%	2.6%	0.2%	9.9%	90.1%



DRAFT Options I-III Student Impacts

The following tables reflect the DRAFT options in terms of student impacts. The first tables show the total number of students impacted (moved) in each option. The following tables show the number of students who move or do not for each school in each scenario.

Student Impact Estimates	
Name	Estimated Number of Students Impacted
Option I	666
Option II	664
Option III	607

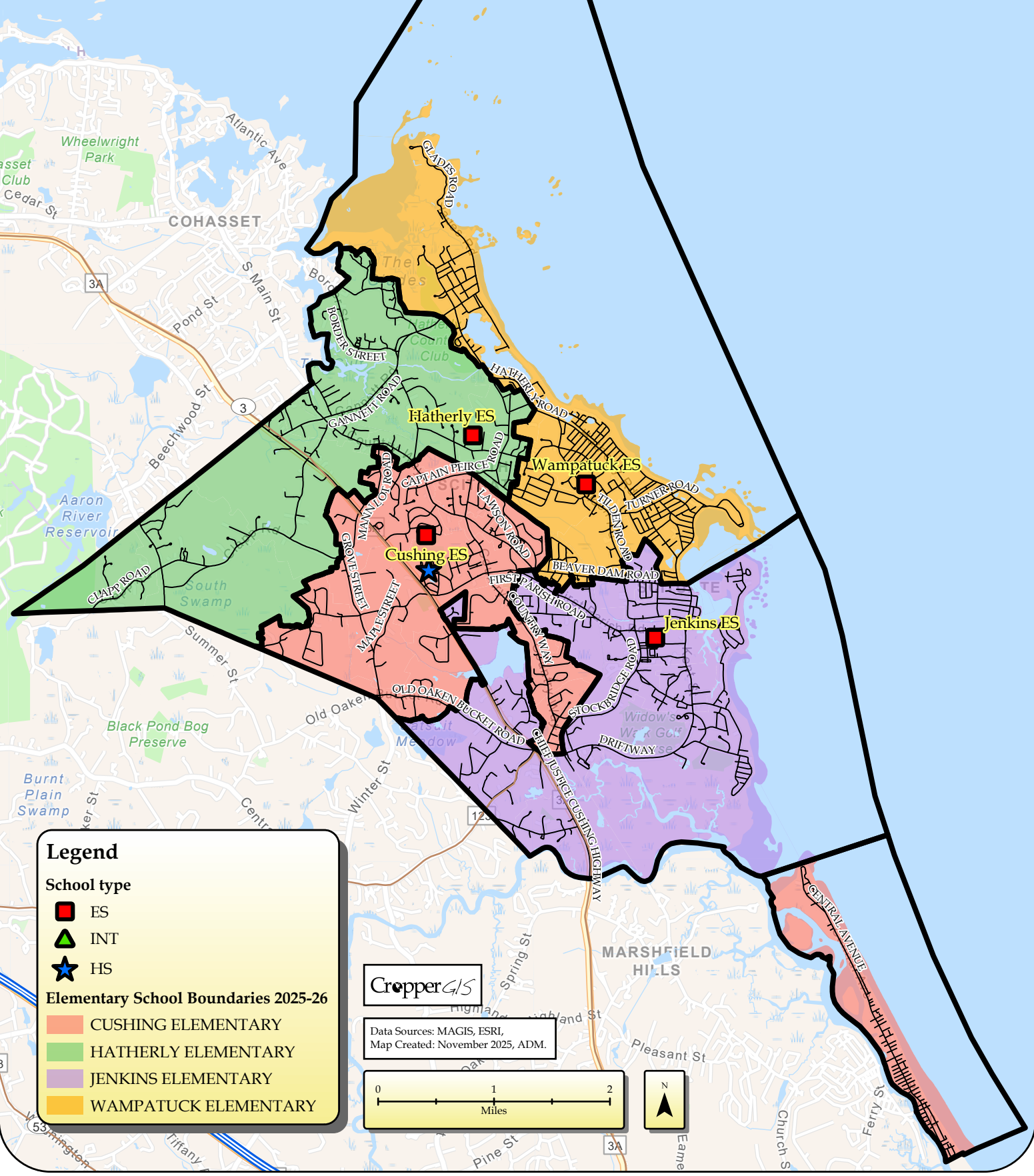
2025-26 Elementary Boundaries	Option I Elementary Boundaries	Estimated Number of Students Impacted
CUSHING ELEMENTARY	JENKINS ELEMENTARY	99
CUSHING ELEMENTARY	NEW ES	129
CUSHING ELEMENTARY	WAMPATUCK ELEMENTARY	116
HATHERLY ELEMENTARY	NEW ES	262
JENKINS ELEMENTARY	JENKINS ELEMENTARY	299
JENKINS ELEMENTARY	WAMPATUCK ELEMENTARY	18
WAMPATUCK ELEMENTARY	NEW ES	42
WAMPATUCK ELEMENTARY	WAMPATUCK ELEMENTARY	294

2025-26 Elementary Boundaries	Option II Elementary Boundaries	Estimated Number of Students Impacted
CUSHING ELEMENTARY	JENKINS ELEMENTARY	109
CUSHING ELEMENTARY	NEW ES	129
CUSHING ELEMENTARY	WAMPATUCK ELEMENTARY	106
HATHERLY ELEMENTARY	NEW ES	262
JENKINS ELEMENTARY	JENKINS ELEMENTARY	301
JENKINS ELEMENTARY	WAMPATUCK ELEMENTARY	16
WAMPATUCK ELEMENTARY	NEW ES	42
WAMPATUCK ELEMENTARY	WAMPATUCK ELEMENTARY	294

2025-26 Elementary Boundaries	Option III Elementary Boundaries	Estimated Number of Students Impacted
CUSHING ELEMENTARY	JENKINS ELEMENTARY	96
CUSHING ELEMENTARY	NEW ES	187
CUSHING ELEMENTARY	WAMPATUCK ELEMENTARY	61
HATHERLY ELEMENTARY	NEW ES	263
JENKINS ELEMENTARY	JENKINS ELEMENTARY	317
WAMPATUCK ELEMENTARY	WAMPATUCK ELEMENTARY	337

Key: White rows represent “Live In” students who live in the boundary and are not impacted by the option. Blue rows represent the number of “Live In” students who live in the boundary and are impacted by the option.

Scituate Public Schools, MA 2025-26 Elementary School Boundaries



Legend

School type

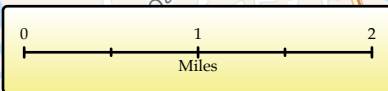
- ES
- ▲ INT
- ★ HS

Elementary School Boundaries 2025-26

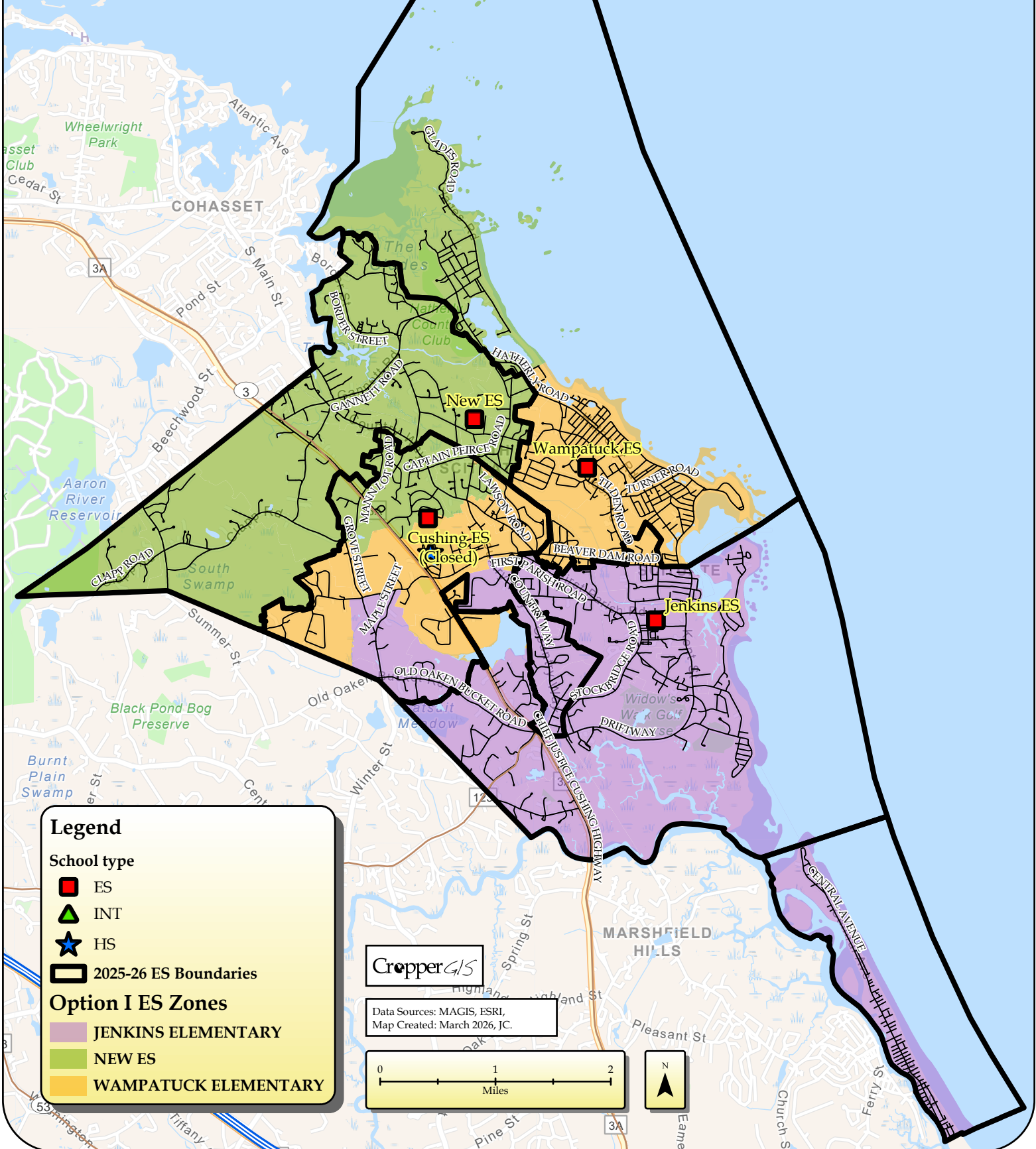
- CUSHING ELEMENTARY
- HATHERLY ELEMENTARY
- JENKINS ELEMENTARY
- WAMPATUCK ELEMENTARY

CropperGIS

Data Sources: MAGIS, ESRI,
Map Created: November 2025, ADM.



Scituate Public Schools, MA Elementary School Boundaries Option I



Legend

School type

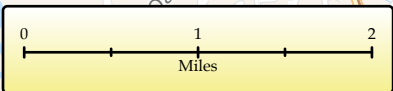
- ES
- ▲ INT
- ★ HS
- 2025-26 ES Boundaries

Option I ES Zones

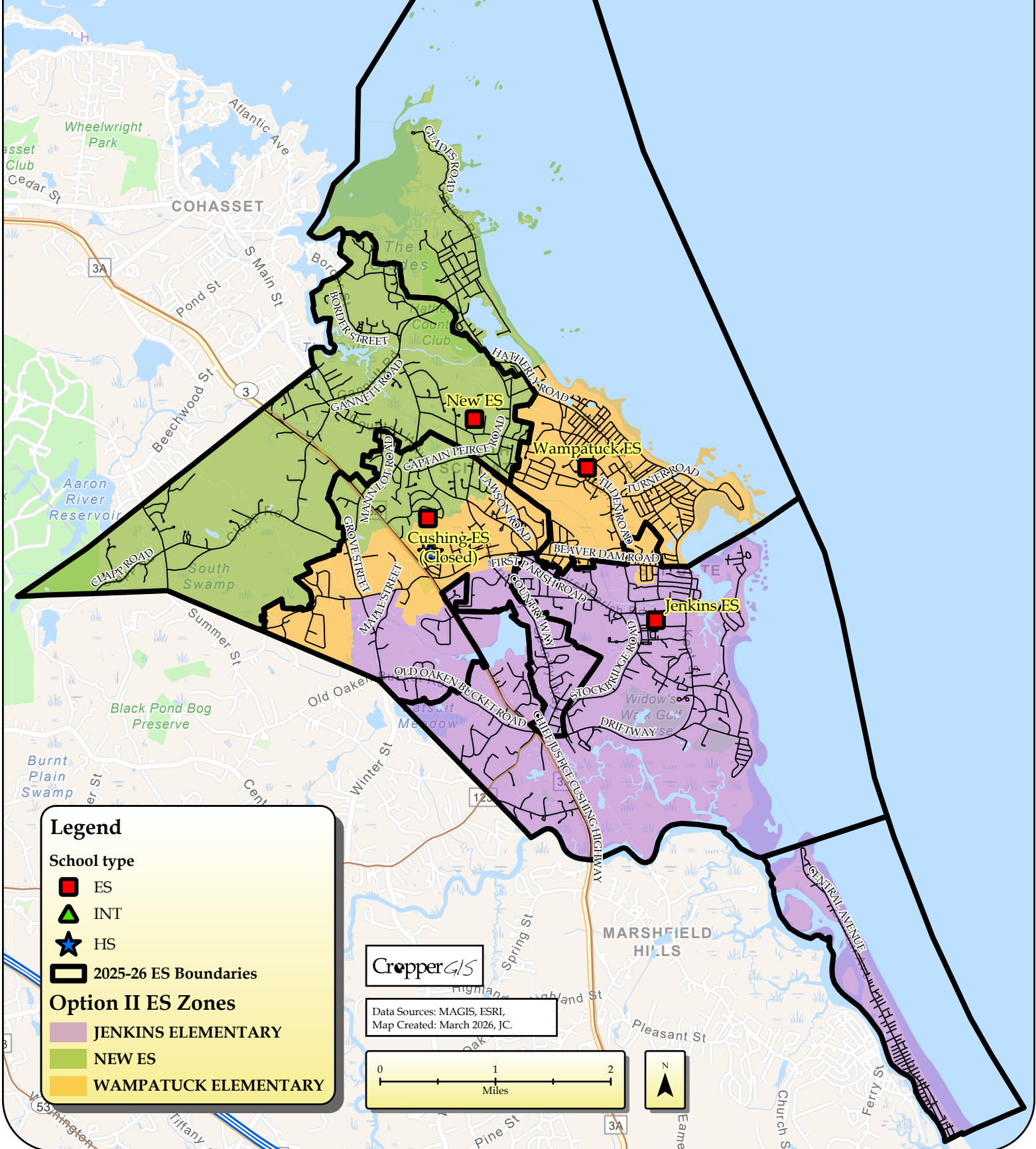
- JENKINS ELEMENTARY
- NEW ES
- WAMPATUCK ELEMENTARY

CropperGIS

Data Sources: MAGIS, ESRI,
Map Created: March 2026, JC.



Scituate Public Schools, MA Elementary School Boundaries Option II



Legend

School type

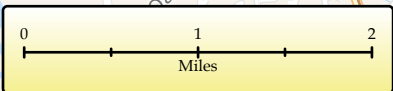
- ES
- ▲ INT
- ★ HS
- 2025-26 ES Boundaries

Option II ES Zones

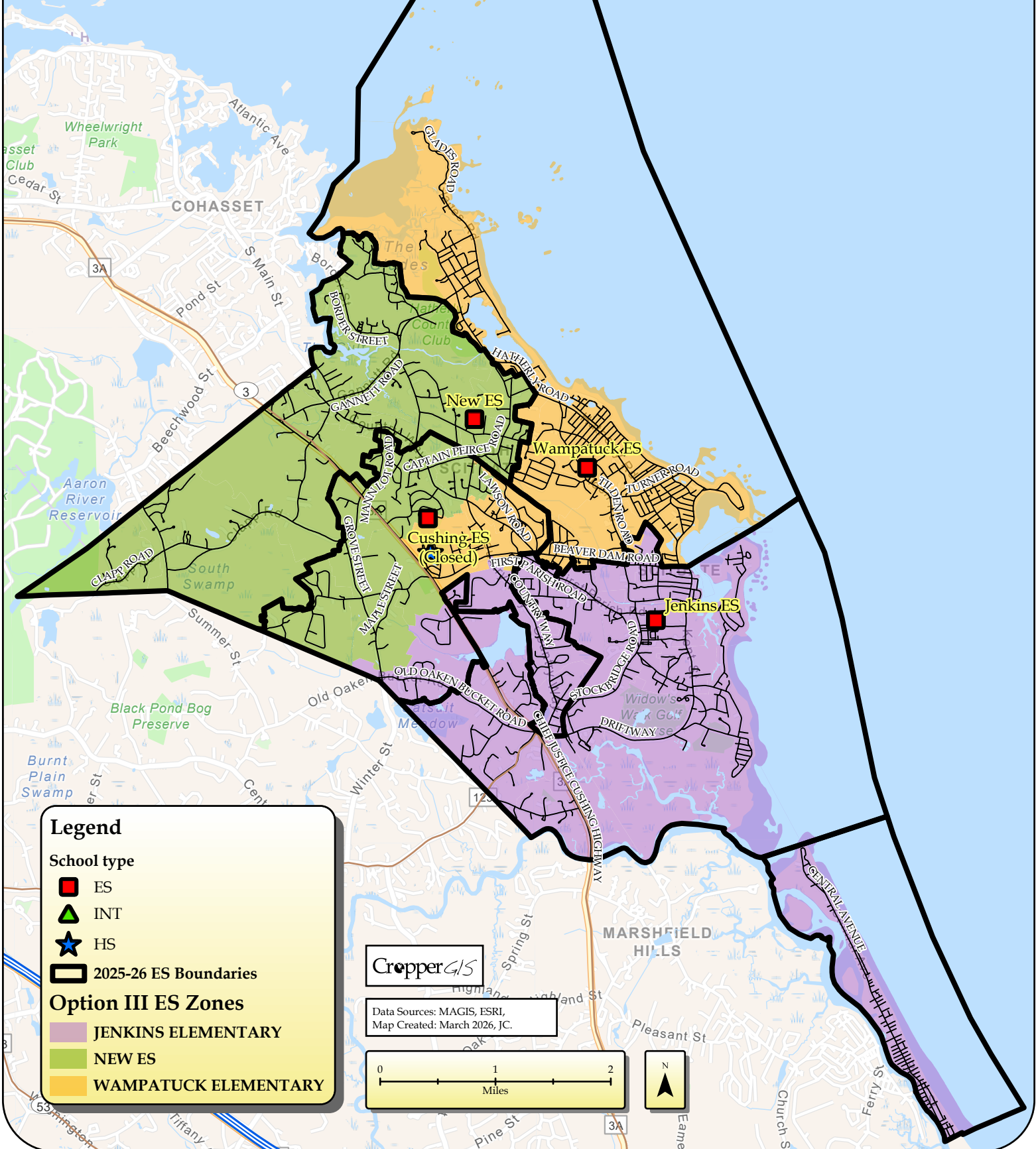
- JENKINS ELEMENTARY
- NEW ES
- WAMPATUCK ELEMENTARY

CropperGIS

Data Sources: MAGIS, ESRI,
Map Created: March 2026, JC.



Scituate Public Schools, MA Elementary School Boundaries Option III



Legend

School type

- ES
- ▲ INT
- ★ HS
- 2025-26 ES Boundaries

Option III ES Zones

- JENKINS ELEMENTARY
- NEW ES
- WAMPATUCK ELEMENTARY

CropperGIS

Data Sources: MAGIS, ESRI,
Map Created: March 2026, JC.

