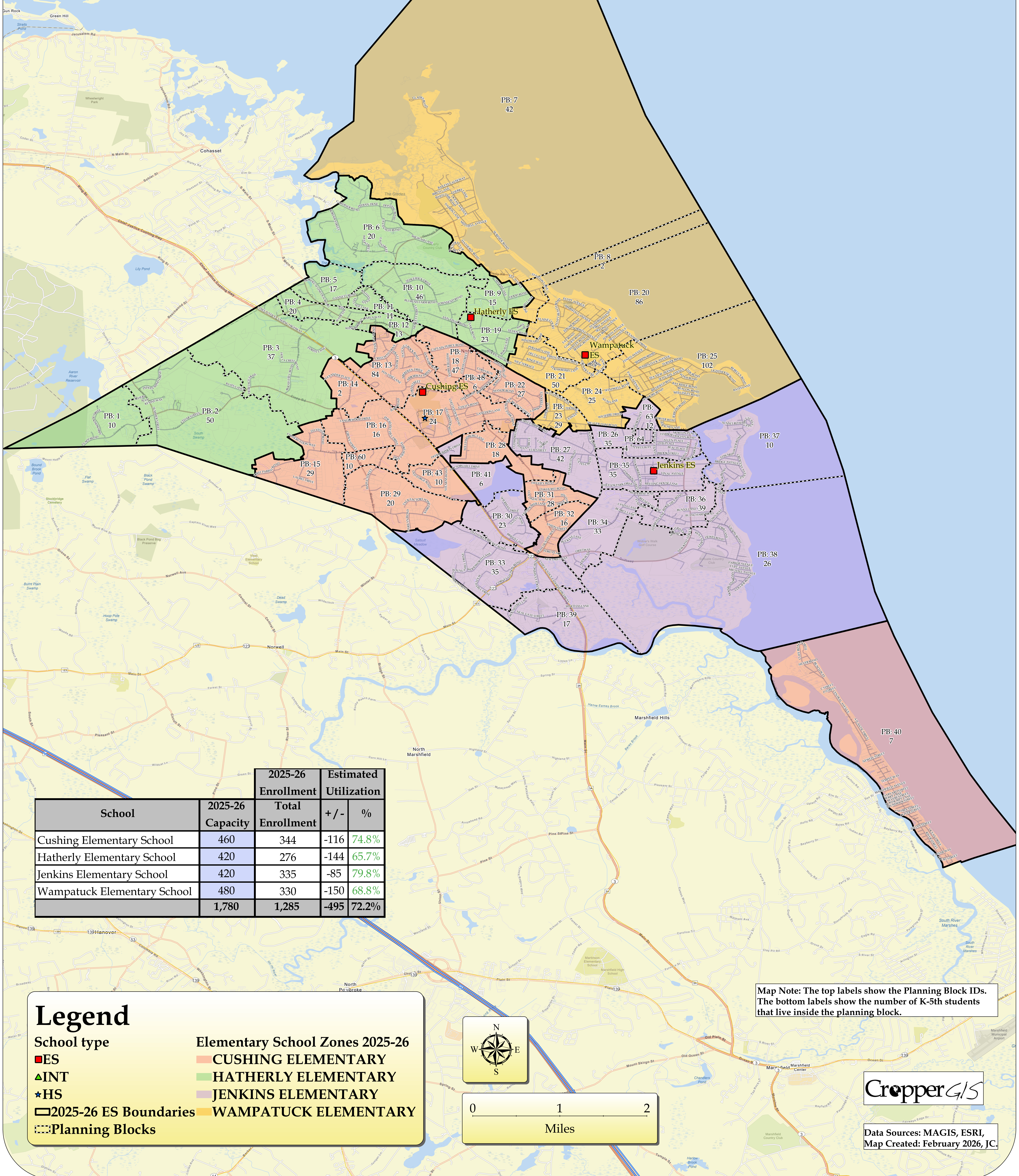


# Scituate Public Schools, MA 2025-26 Elementary School Boundaries

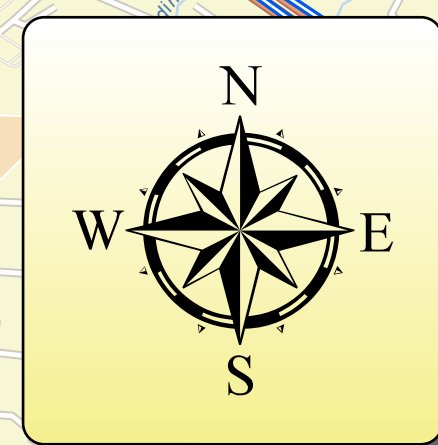


School	2025-26 Capacity	2025-26 Enrollment		Estimated Utilization	
		Total Enrollment	+ / -	%	
Cushing Elementary School	460	344	-116	74.8%	
Hatherly Elementary School	420	276	-144	65.7%	
Jenkins Elementary School	420	335	-85	79.8%	
Wampatuck Elementary School	480	330	-150	68.8%	
	1,780	1,285	-495	72.2%	

Map Note: The top labels show the Planning Block IDs. The bottom labels show the number of K-5th students that live inside the planning block.

## Legend

- School type**
- ES
  - ▲ INT
  - ★ HS
  - 2025-26 ES Boundaries
  - ▭ Planning Blocks
- Elementary School Zones 2025-26**
- CUSHING ELEMENTARY
  - HATHERLY ELEMENTARY
  - JENKINS ELEMENTARY
  - WAMPATUCK ELEMENTARY

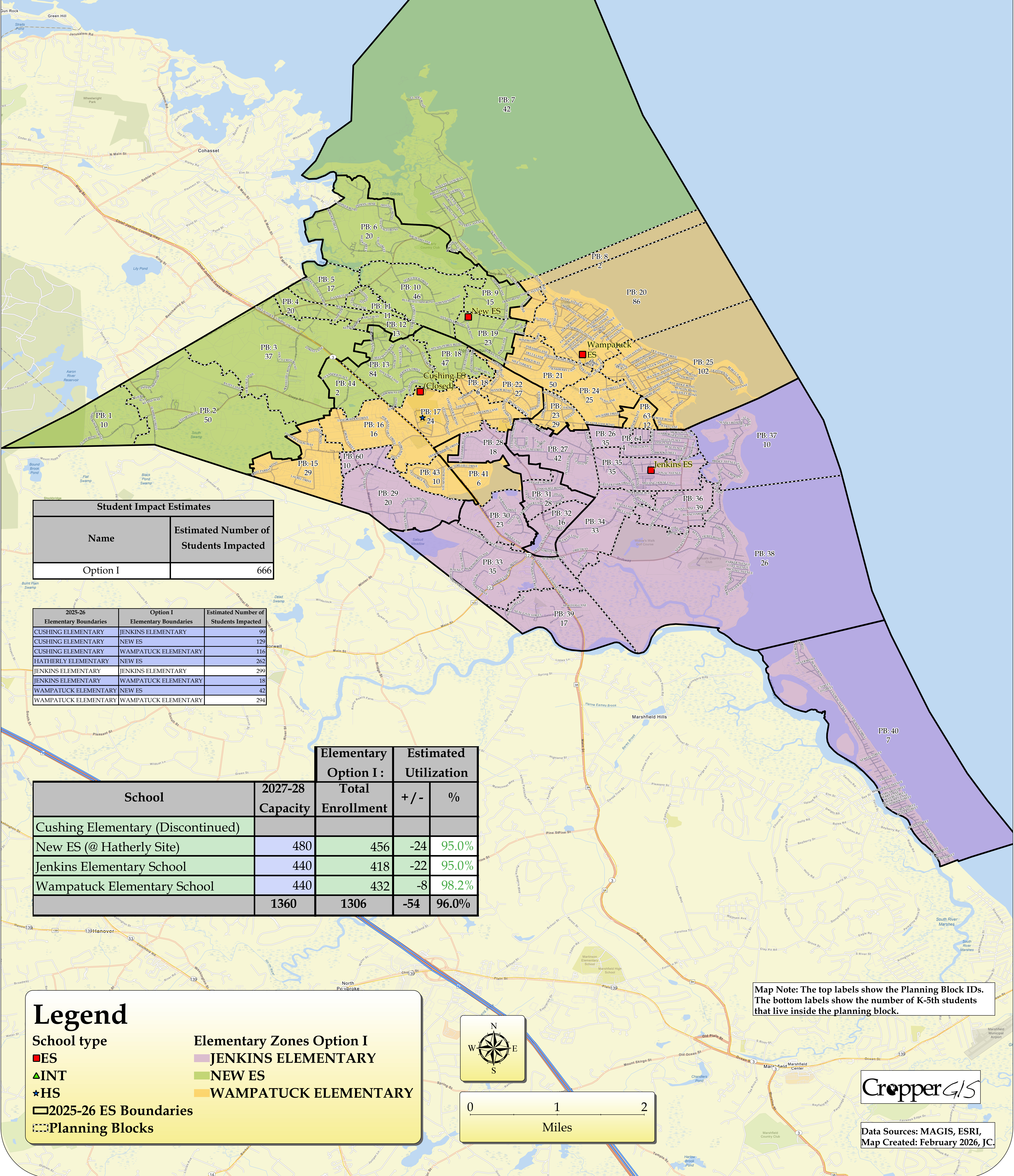


CropperGIS

Data Sources: MAGIS, ESRI, Map Created: February 2026, JC.



# Scituate Public Schools, MA Elementary School Boundaries Option I



Student Impact Estimates	
Name	Estimated Number of Students Impacted
Option I	666

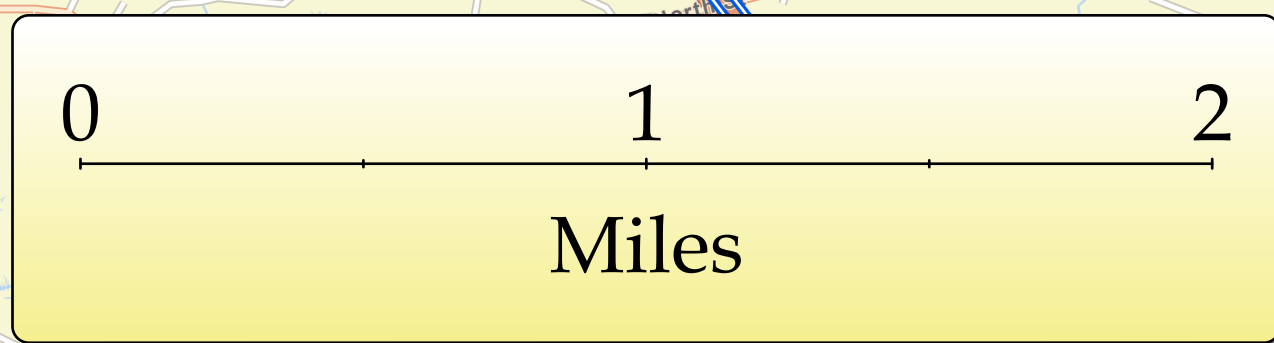
2025-26 Elementary Boundaries	Option I Elementary Boundaries	Estimated Number of Students Impacted
CUSHING ELEMENTARY	JENKINS ELEMENTARY	99
CUSHING ELEMENTARY	NEW ES	129
CUSHING ELEMENTARY	WAMPATUCK ELEMENTARY	116
HATHERLY ELEMENTARY	NEW ES	262
JENKINS ELEMENTARY	JENKINS ELEMENTARY	299
JENKINS ELEMENTARY	WAMPATUCK ELEMENTARY	18
WAMPATUCK ELEMENTARY	NEW ES	42
WAMPATUCK ELEMENTARY	WAMPATUCK ELEMENTARY	294

School	2027-28 Capacity	Elementary Option I :		Estimated Utilization	
		2027-28 Total Enrollment	+ / -	%	
Cushing Elementary (Discontinued)					
New ES (@ Hatherly Site)	480	456	-24	95.0%	
Jenkins Elementary School	440	418	-22	95.0%	
Wampatuck Elementary School	440	432	-8	98.2%	
	1360	1306	-54	96.0%	

Map Note: The top labels show the Planning Block IDs. The bottom labels show the number of K-5th students that live inside the planning block.

## Legend

- School type
  - ES
  - ▲ INT
  - ★ HS
  - 2025-26 ES Boundaries
  - ▭ Planning Blocks
- Elementary Zones Option I
  - JENKINS ELEMENTARY
  - NEW ES
  - WAMPATUCK ELEMENTARY

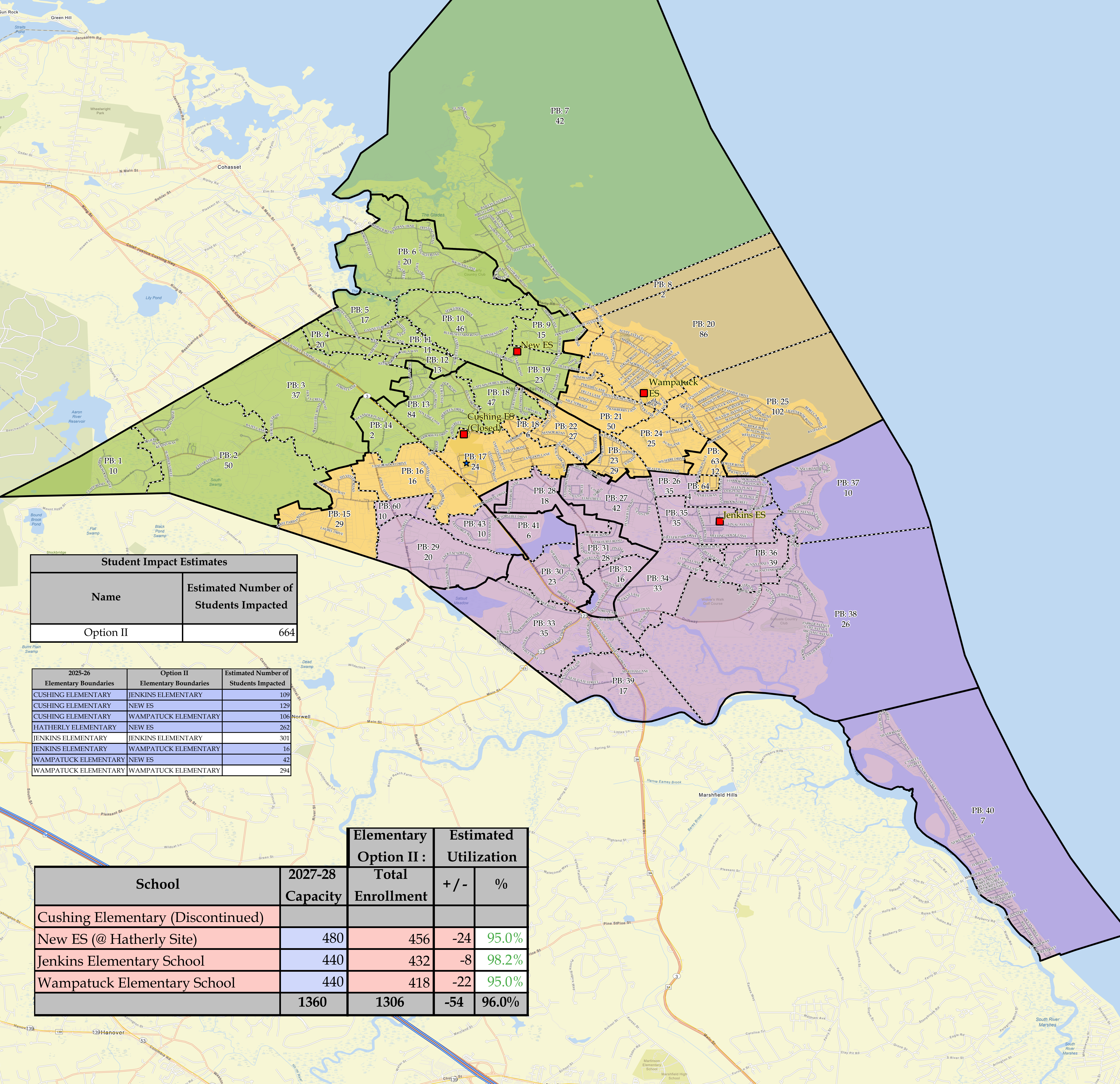


CropperGIS

Data Sources: MAGIS, ESRI, Map Created: February 2026, JC.



# Scituate Public Schools, MA Elementary School Boundaries Option II



Student Impact Estimates	
Name	Estimated Number of Students Impacted
Option II	664

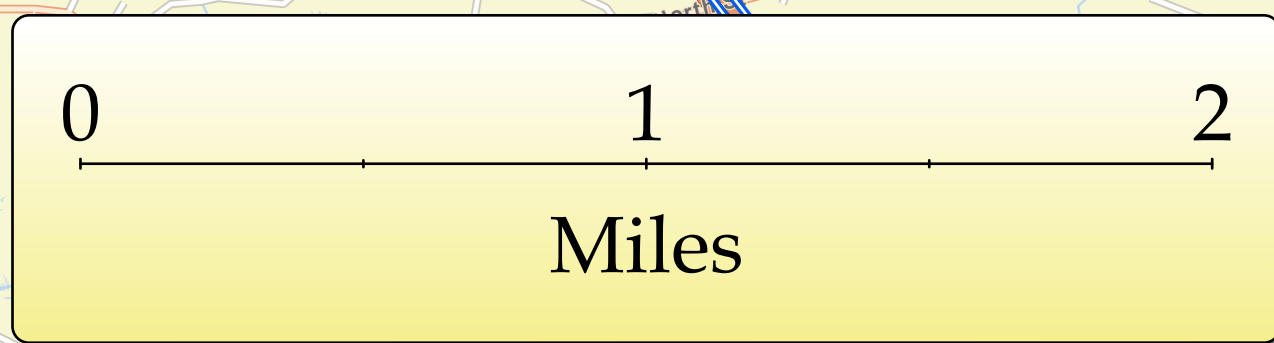
2025-26 Elementary Boundaries	Option II Elementary Boundaries	Estimated Number of Students Impacted
CUSHING ELEMENTARY	JENKINS ELEMENTARY	109
CUSHING ELEMENTARY	NEW ES	129
CUSHING ELEMENTARY	WAMPATUCK ELEMENTARY	106
HATHERLY ELEMENTARY	NEW ES	262
JENKINS ELEMENTARY	JENKINS ELEMENTARY	301
JENKINS ELEMENTARY	WAMPATUCK ELEMENTARY	16
WAMPATUCK ELEMENTARY	NEW ES	42
WAMPATUCK ELEMENTARY	WAMPATUCK ELEMENTARY	291

School	2027-28 Capacity	Elementary Option II : Total Enrollment		Estimated Utilization	
				+ / -	%
Cushing Elementary (Discontinued)					
New ES (@ Hatherly Site)	480	456	-24	95.0%	
Jenkins Elementary School	440	432	-8	98.2%	
Wampatuck Elementary School	440	418	-22	95.0%	
	1360	1306	-54	96.0%	

Map Note: The top labels show the Planning Block IDs. The bottom labels show the number of K-5th students that live inside the planning block.

## Legend

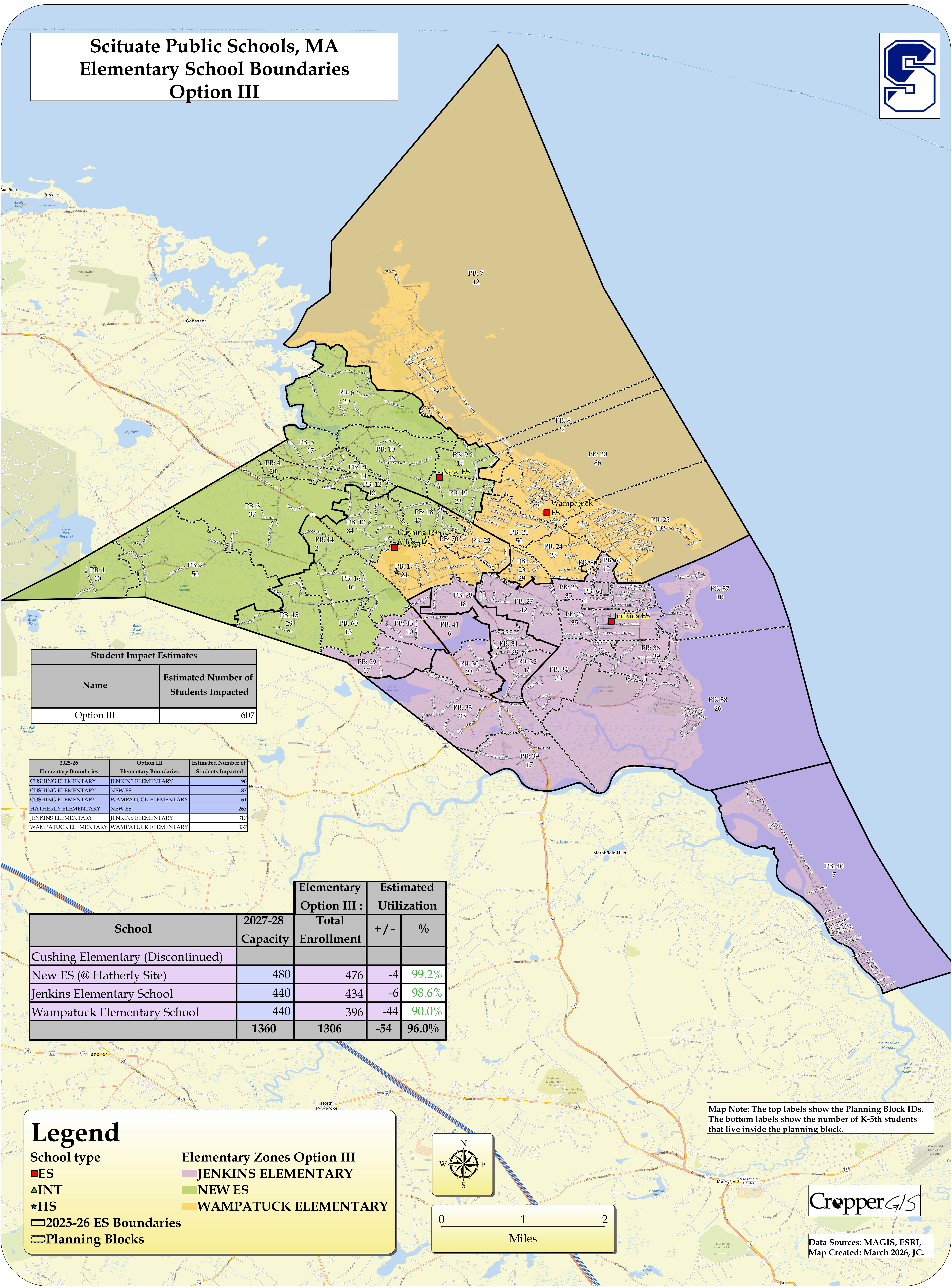
- School type
- ES
- ▲ INT
- ★ HS
- 2025-26 ES Boundaries
- ▤ Planning Blocks
- Elementary Zones Option II
- JENKINS ELEMENTARY
- NEW ES
- WAMPATUCK ELEMENTARY



Data Sources: MAGIS, ESRI, Map Created: February 2026, JC.



# Scituate Public Schools, MA Elementary School Boundaries Option III



Student Impact Estimates	
Name	Estimated Number of Students Impacted
Option III	607

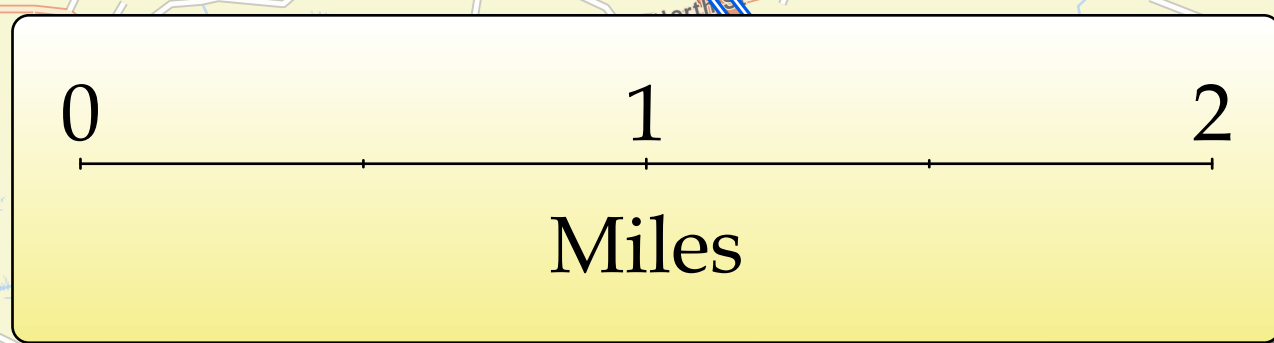
2025-26 Elementary Boundaries	Option III Elementary Boundaries	Estimated Number of Students Impacted
CUSHING ELEMENTARY	JENKINS ELEMENTARY	96
CUSHING ELEMENTARY	NEW ES	187
CUSHING ELEMENTARY	WAMPATUCK ELEMENTARY	61
HATHERLY ELEMENTARY	NEW ES	263
JENKINS ELEMENTARY	JENKINS ELEMENTARY	317
WAMPATUCK ELEMENTARY	WAMPATUCK ELEMENTARY	337

School	2027-28 Capacity	Elementary Option III :		Estimated Utilization	
		Total Enrollment	+ / -	%	
Cushing Elementary (Discontinued)					
New ES (@ Hatherly Site)	480	476	-4	99.2%	
Jenkins Elementary School	440	434	-6	98.6%	
Wampatuck Elementary School	440	396	-44	90.0%	
	1360	1306	-54	96.0%	

Map Note: The top labels show the Planning Block IDs. The bottom labels show the number of K-5th students that live inside the planning block.

## Legend

- School type
  - ES
  - ▲ INT
  - ★ HS
  - 2025-26 ES Boundaries
  - ▤ Planning Blocks
- Elementary Zones Option III
  - JENKINS ELEMENTARY
  - NEW ES
  - WAMPATUCK ELEMENTARY



CropperGIS

Data Sources: MAGIS, ESRI, Map Created: March 2026, JC.