



2025-26 Redistricting Study

Public Information Session 1
December 9, 2025

*Presented by: Scituate Public Schools and
Cropper GIS Consulting*

Welcome and Introductions

Who We Are

The Facilitator

Cropper GIS Consulting, LLC

- K-12 school planning is our business and our passion. Our specialty is facilitating redistricting studies.
- Cropper GIS works with K-12 school districts to:
 - Develop redistricting strategies
 - Facilitate community engagement
 - Perform demographic studies
 - Prepare long-range facility master plans
 - Conduct housing and pupil yield-factor studies

Matthew Cropper, Cropper GIS

- 30+ years experience providing GIS mapping and analysis services to school districts and other clients
- Facilitated boundary change study projects across the U.S.
- Published numerous times on topics related to K-12 facility and redistricting processes

The Company

Recent Projects:

- Lowell Public Schools, MA
- Nauset Public Schools, MA
- Thomaston Public Schools, CT
- Baltimore County Public Schools, MD
- Wicomico County Public Schools, MD
- Spotsylvania County Public Schools, VA
- Columbus City Schools, OH
- Charlotte-Mecklenburg Schools, NC
- Huber Heights City Schools, OH
- Akron Public Schools, OH
- MSD Washington Township, IN
- Charleston County Schools, SC



Project Objectives

With direction from the School Committee, Scituate Public Schools (SPS) is launching a redistricting and student-assignment study to prepare for the Fall 2027 opening of the New Elementary School on the Hatherly school site.

The district is also discontinuing the use of the current Cushing Elementary site, and the primary objective is to balance K-5th grade enrollment across the district's three elementary schools: New School, Wampatuck ES, and Jenkins ES.

Pre-K students from across the district will attend the new school.

We are tasked with meeting the following objectives:

- Establish the elementary school attendance areas among the district's three schools (New School, Wampatuck, and Jenkins) for the Fall 2027 school year.

Redistricting Study

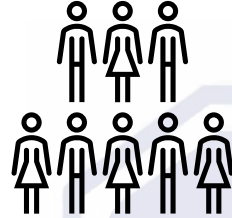
Cropper GIS Consulting was hired by Scituate Public Schools to facilitate and manage the project. Our firm is tasked to:

- A. **Develop** supporting materials to help facilitate the study.
- B. **Implement** an expert-based process of developing a student redistricting plan.
- C. **Empower** the community throughout the process.
- D. **Leverage** expertise to develop logical, efficient, and effective student redistricting options with the planning team.
- E. **Recommend** a redistricting plan to the School Committee.

Redistricting Criteria



- Balance school facility utilization – Make every effort to have equitable utilization (where possible) across the district and in accordance with school capacities. Make efficient use of available space.



- Consider economic, cultural, and ethnic diversity – Ensure schools are inclusionary and not adversely affected by enrollment decisions.



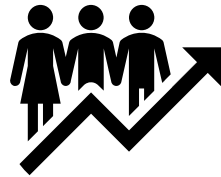
- Close Proximity – Students should be assigned to the school within the closest proximity to their homes where possible. As well as avoiding creating zones that are not connected to primary attendance zone



- Maximize busing efficiencies in transportation of students – Make every effort to account for transportation (school bus and car rider), parent commuting patterns, balance busing travel time, and costs.



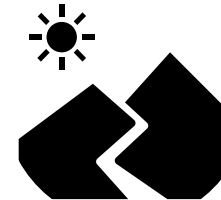
- Make every effort to establish contiguous zones – Avoid creating zones that are not connected to the primary attendance zone, where possible.



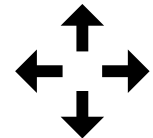
- Account for future economic growth to Allow for increasing attendance in high growth areas.



- Ensure that planning is done with an overall focus on what is the safest and most secure plan for all students in the district.



- Use major roads and natural boundaries wherever feasible to define attendance zones – Minimize the number of students who need to cross major intersections and other barriers to maximize the safety and security of students.



- Minimize impact on students -Attempt to minimize the number of students impacted when making boundary adjustments Impact on specialized school programs or a change to school capacity.

Stakeholders

Stakeholders

Outline of Stakeholder Responsibilities	
Consultant	<ul style="list-style-type: none"> <input type="checkbox"/> Schedule and facilitate Internal Planning Team meetings. <input type="checkbox"/> Communicate updates with planning team, including updated handout and meeting schedule logistics. <input type="checkbox"/> Conduct public meetings to solicit feedback related to draft options that are under consideration. <input type="checkbox"/> Support the district in providing materials such as presentations, handouts, and online interactive maps for the public's consumption. <input type="checkbox"/> Coordinate and summarize online feedback received from general public and internal planning team.
Internal Planning Team	<ul style="list-style-type: none"> <input type="checkbox"/> Consists of key SPS district administrators including central office, senior leadership, department staff personnel, planning, and Scituate community members. <input type="checkbox"/> Group will work to review draft options that are being developed in preparation to share with the School Committee and public. <input type="checkbox"/> Review input provided from the consultant and general public regarding draft options and continue to modify maps with a focus on the best solution for all students as a whole. <input type="checkbox"/> Share a redistricting plan with the School Committee.
General Public	<ul style="list-style-type: none"> <input type="checkbox"/> Informed through website. <input type="checkbox"/> Invited to submit comments and input throughout the entire process. <input type="checkbox"/> Invited to participate in public information sessions and to provide input via surveys and online general feedback form.
School Committee	<ul style="list-style-type: none"> <input type="checkbox"/> Charge internal planning team with its responsibilities. <input type="checkbox"/> Identify questions the IPT is expected to answer. <input type="checkbox"/> Advise staff and the process regarding policy-related considerations and other committee-level decisions. <input type="checkbox"/> Vote on a redistricting plan.



Timeline

A horizontal bar with a blue-to-white gradient, featuring a large, faint, light-blue 'S' shape in the background. The word 'Timeline' is written in a bold, italicized black font across the center of the bar.

Timeline

Process & Timeline for Redistricting

	Nov. '25	Dec. '25	Jan. '26	Feb. '26	March '26	April '26
<i>Data Collection</i>						
<i>Data Analysis / Assimilation</i>						
<i>Baseline Options Development</i>						
<i>Internal Planning Team Work (1-2 meetings per month)</i>						
Public Information Session #1 : Present Project Process, Criteria, Timeline, and Redistricting Objectives to Community. Web-based meeting.		12/9 @ 6pm				
Public Information Session #2: Present DRAFT Redistricting Options to General Public for Comment/Feedback. On-site meeting to review options and q/a at end of session.				2/25 @ 6pm		
<i>Presentation of Final Recommendations to the School Committee</i>					3/30	
<i>School Committee Votes on Redistricting Plan</i>						4/27

Project Approach

Redistricting Study Phases

PHASE 1

DATA COLLECTION

Data collection efforts have been underway through the summer, and information will continue to be collected throughout the process if deemed useful. As the study proceeds, the IPT members will provide additional information as they bring their experience and expertise to their work. At the public input meetings and via the community survey that will follow, public input will provide valuable data. Finally, SPS and Cropper GIS staff will provide data to the internal planning team upon request throughout the whole study.

PHASE 2

DATA ASSIMILATION

Once data is collected, it is necessary to integrate it into GIS to enable quick and efficient analysis and options development. This includes geocoding of student data, parcel conversion of current boundaries, and the development of planning blocks.

PHASE 3

BACKGROUND REPORT & BASELINE OPTIONS DEVELOPED

A background report is developed and distributed to the stakeholders. The background report outlines the key objectives, guidelines & criteria, redistricting process, stakeholders' roles, overview of expected mapping conventions, and current enrollment statistics relating to the redistricting study. This expands the knowledge of all the stakeholders and shares a message that is consistent and accurate.

PHASE 4

OPTION ANALYSIS: IPT MEETINGS & PUBLIC INFO

The internal planning team will meet from November 2025 through March 2026 to analyze data, review attendance zones, and develop redistricting options. At the February public information session, the work of the team will be shared, and the general public will have an opportunity to discuss planning team work with staff and planning team members. Valuable information will also be gathered via a community survey that will take place after the information session. The recommended redistricting plan for the Fall 2027-28 school year will be presented to the School Committee in March 2026.

Phase 1

Data Collection

Data availability and quality are central to this redistricting study. A comprehensive collection of data is compiled throughout the life of the study. Data collected includes:

- School District— Official enrollment counts by school by grade, along with enrollment databases by address. Data/feedback regarding transportation, school locations, facility information.
- City / County Sources— Base GIS data (address pts, municipalities, subdivisions, existing and planned developments, road networks, etc.)

Data collection efforts have been underway through the Fall, and information will continue to be collected throughout the process if it is deemed useful.

Phase 2

Data Assimilation

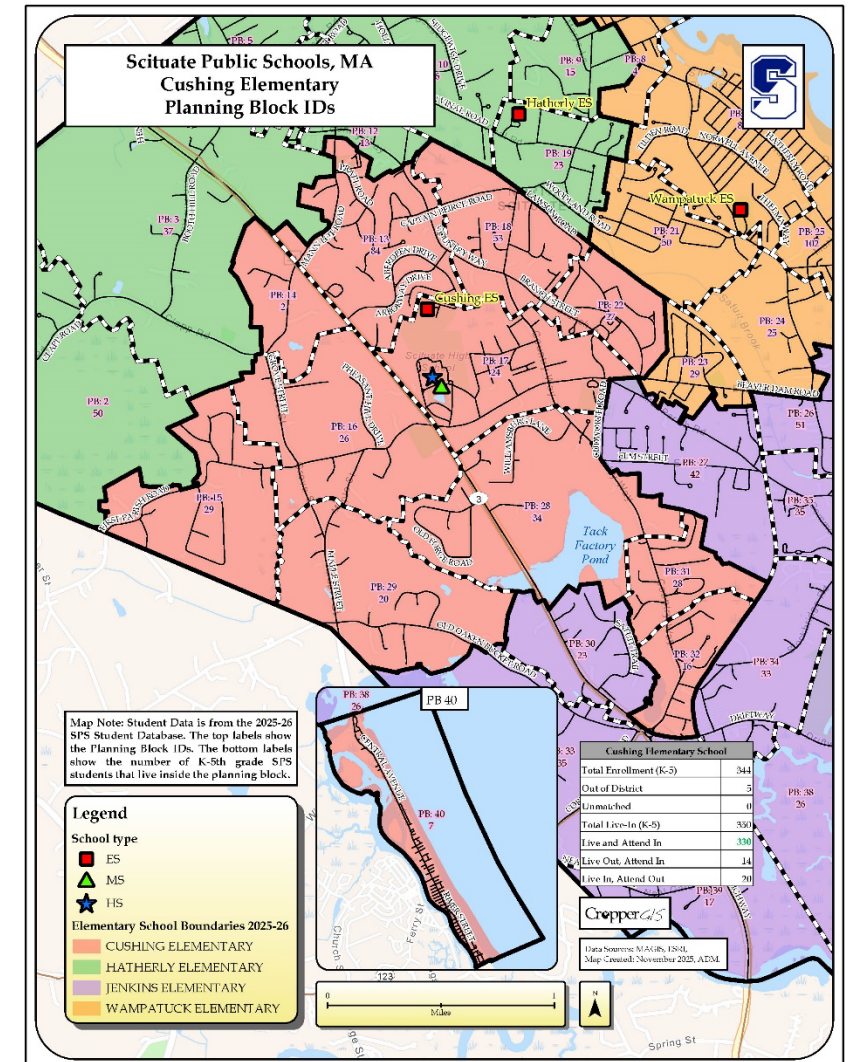
Cropper is tasked to develop several key pieces of information to help facilitate the redistricting study process.

Once data is collected, it is necessary to integrate it into GIS to enable quick and efficient analysis and redistricting options development. This includes, but is not limited to, geographically mapping out:

- Attendance zones
- Student's home addresses
- Planning Blocks

Planning Blocks: small areas created for examining student populations in each area:

- Based on 2025-26 Student Enrollment. The top labels show the Planning block ID (PB #). The bottom labels show the number of K-5 SPS students that live inside the planning block.



Phase 2

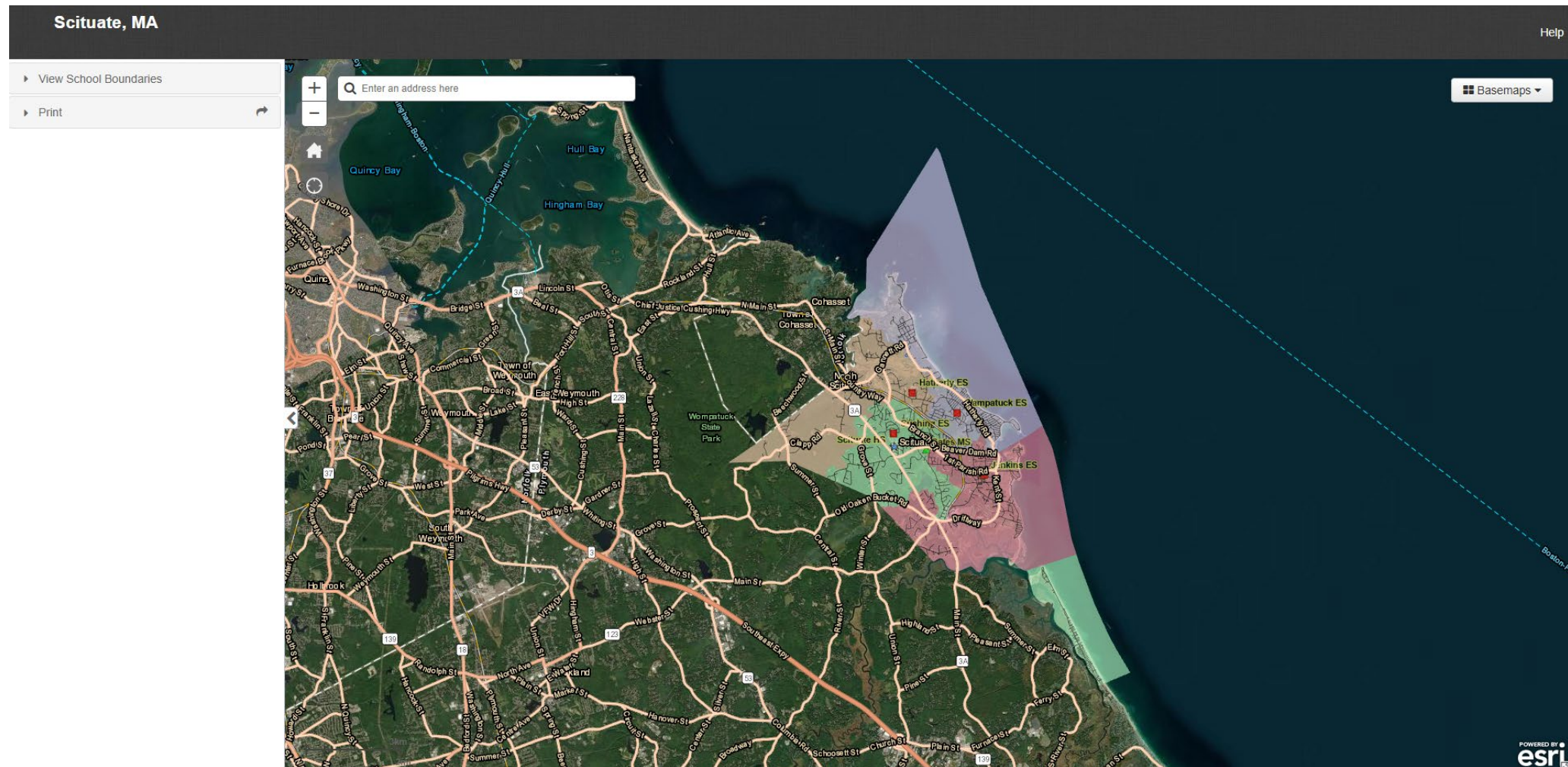
Interactive Web map

- An online map has been developed to further inform all stakeholders on the work of the internal planning team.
- Current zones and options can be viewed on the map.
- Other features can be turned on/off on the map, including planning blocks.
- Map is customizable and can/will be updated during the process to show new options along with other information requested by the internal planning team.
- Site can be viewed on any device, including mobile devices and tablets (with internet connection).
- Site address is:

https://croppermap.com/scituate_ma/

Phase 2

Interactive Web map



Background Report Development

The Background Report Purpose:

- To expand the knowledge of each stakeholder
- To help share a message that is consistent and accurate

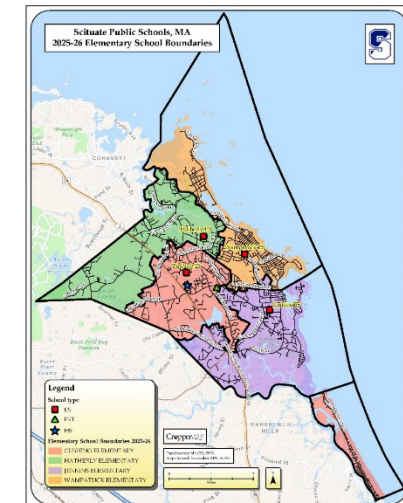
Please be familiar with the entire report, and note some sections:

- Background and Key Objectives (p. 1)
- Redistricting Study Criteria (p. 2)
- Study Process (p. 2)
- Study Timeline (p. 4)
- Live-Attend Maps (p. 9)
- Enrollment and Utilization Tables (p. 19)



Scituate Public Schools, MA 2025-26 Redistricting Study

Background Report



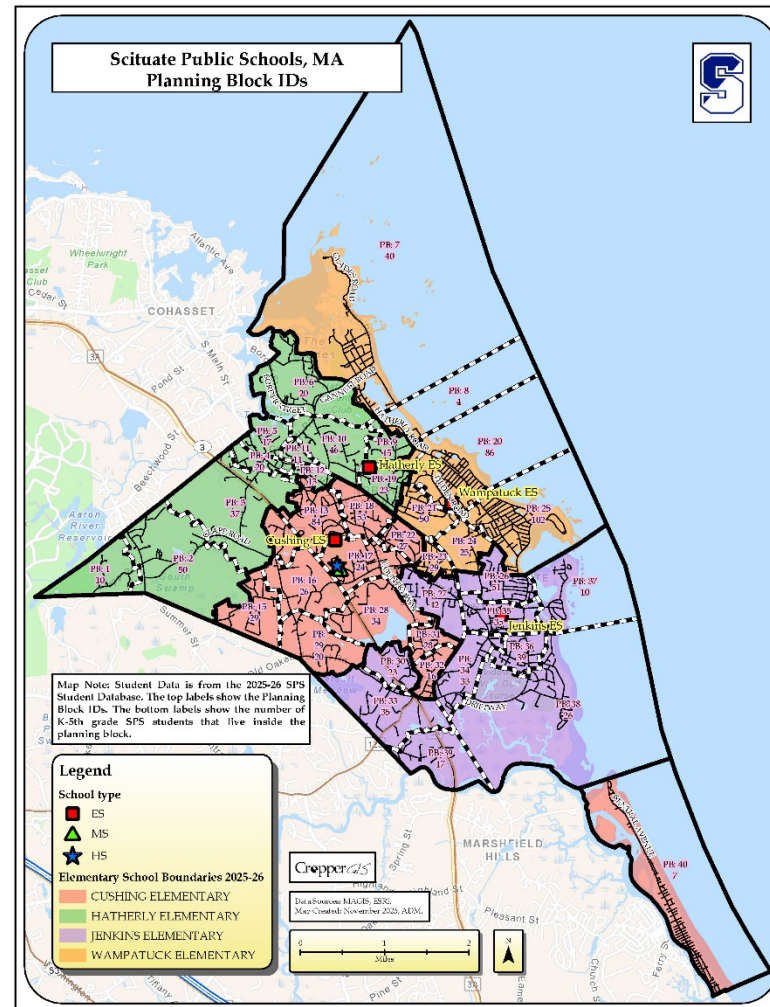
CropperGIS

Phase 4

Baseline Options Development

To expedite the process and empower the community, it is best to begin with a series of baseline redistricting options.

Baseline options and option development will begin in mid-late November.



Internal Planning Team and Public Engagement

The internal planning team will meet from November 2025 through March 2026 to analyze data, review attendance zones, and develop zone options.

At the February public information session, the work of the team will be shared, and the general public will have an opportunity to discuss planning teamwork with staff and planning team members.

Valuable information will also be gathered via a community survey that will take place after the information sessions.

The recommended redistricting plan for the Fall 2027-28 school year will be presented to the School Committee in March 2026.

Communication Logistics

Communication Logistics

Visit the Redistricting Study Web site at www.scituateredistricting.com

Scituate Public Schools, MA: 2025-26 Redistricting Project

[Project Overview](#)[Project Maps](#)

Project Overview

Useful Links:

[Scituate Public Schools Website](#)

[General Feedback Form](#)

[Background Report](#)

[Web Map](#)

Background and Objectives

With direction from the School Committee, Scituate Public Schools (SPS) is launching a redistricting and student-assignment study to prepare for the Fall 2027 opening of the New Elementary School on the Hatherly school site.

The district is also discontinuing the use of the current Cushing Elementary site, and the primary objective is to balance K-5th grade enrollment across the district's three elementary schools; New School, Wampatuck ES, and Jenkins ES.

Pre-K students from across the district will attend the new school.

We are tasked with meeting the following objectives:

- Establish the elementary school attendance areas among the district's three schools (New School, Wampatuck, and Jenkins) for the Fall 2027 school year.

Process & Timeline for Redistricting

	Nov. '25	Dec. '25	Jan. '26	Feb. '26	March '26	April '26
<i>Data Collection</i>						

Communication Logistics

Stay Informed – Provide Feedback

- Submit comments via the online Scituate MA Redistricting – General Feedback Form
- Attend the Public Information Session #2 on February 25, 2026 (in Person)
 - When: 02/25/2026 @ 6:00pm; Location: TBD
 - Present DRAFT Redistricting Options to the General Public for Comment/Feedback.
- Participate in an Online Survey from February 25 – March 11, 2026
- School Committee votes on a redistricting plan on April 27, 2026

Next Steps

Nov. 2025-
Mar. 2026

- Internal Planning Team will meet 1-2 times per months developing/deliberating over redistricting options

February 25,
2026

- Public Information Session #2 will be held in person on February 25th

March 30,
2026

- Presentation of Final Recommendations to the School Committee



Thank You!