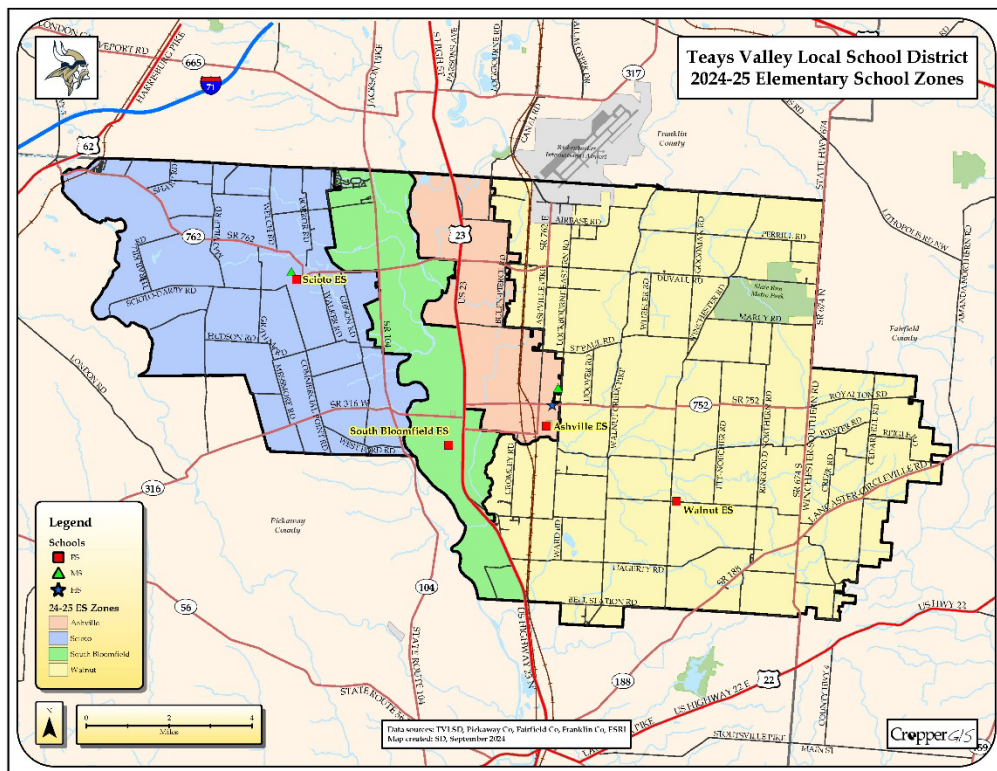




Teays Valley Local School District, OH 2024-25 Redistricting Study

Final Recommendation Handout 12/16/2024



Cropper GIS



2024-25 Capacity, Official Enrollment and Building Utilizations

The following document contains a series of tables that depict statistics for current schools and boundaries that are being evaluated. This information will help inform all stakeholders on how schools could be potentially impacted as a result of potential redistricting adjustments. The current student enrollment numbers were derived from the district's August 21, 2024 student database.

Glossary of Terms

Capacity -The number of students that an individual school has the physical capacity to enroll and can be reasonably accommodated in a facility.

Utilization - Utilization is the total enrollment divided by the capacity, described as a percentage.

Live-in students - Students residing inside of a school attendance boundary, regardless of where that student attends school.

Live and Attend - Students who attend the assigned schools for the zones where they live.

Live Out Attend In - Students that live outside of their attending school's boundary but reside within the Teays Valley Local School District boundary.

Out of District students - Students that live outside of Teays Valley Local School District boundary.

Unmatched students - Students whose address was not able to be located by the GIS.



Enrollment and Utilization Tables

The following tables show current utilization by percentage based on current enrollment and 2024-25 building capacity. Student counts are based on the August 21, 2024 Teays Valley Local School District student database. The Final Recommendation, presented in this document, builds on the internal planning team’s work throughout the process, and better balances utilization throughout the district while minimizing impact on students. It moves students from South Bloomfield ES to Scioto ES, which has capacity for modular classrooms, and introduces a feeder pattern split at the middle school level, which is necessary to address overcrowding in Teays Valley West MS. It also addresses the shortcomings of the DRAFT Options presented to the public on November 12, based on public feedback received from the online feedback form and other sources.

Cells are color coded based on deviation from the standard percentage in each field. The color coding is intended to help the reader of the table quickly identify outliers, both low and high, as compared to the district average. The color coding does not necessarily correlate to what the district considers to be an ideal or problematic scenario. Percentages are rounded.

Within 10%
Between 10-15%
Over/Under 15%

2024-25 ES Enrollment and Utilization											
Elementary School	Capacity	PS*	KG	1	2	3	4	5	Current Enrollment	Current Utilization	Trend
Ashville ES	550	41	71	64	72	57	71	66	442	80%	▬
Scioto ES	740	40	92	88	85	103	97	103	608	82%	▼
South Bloomfield ES	550	13	88	91	104	107	79	101	583	106%	▬
Walnut ES	550	3	72	72	84	82	67	88	468	85%	▼
Total	2,390	97	323	315	345	349	314	358	2,101	88%	▼

*Half of actual enrollment of PS students is displayed in this table, due to AM/PM classes.

ES Final Recommendation Enrollment and Utilization											
Elementary School	Capacity	PS*	KG	1	2	3	4	5	Estimated Enrollment	Estimated Utilization	Trend
Ashville ES	550	23	73	68	77	63	79	74	457	83%	▬
Scioto ES	740	31	96	95	116	114	106	115	673	91%	▼
South Bloomfield ES	550	21	84	77	70	89	66	80	487	89%	▬
Walnut ES	550	22	70	75	82	83	63	89	484	88%	▼
Total	2,390	97	323	315	345	349	314	358	2,101	88%	▼

*Half of actual enrollment of PS students is displayed in this table, due to AM/PM classes.



Enrollment and Utilization Tables - Middle Schools

		2024-25 MS Enrollment and Utilization					
Middle School	Capacity	6	7	8	Current Enrollment	Current Utilization	Trend
Teays Valley East MS	590	173	158	131	462	78%	▲
Teays Valley West MS	590	202	204	178	584	99%	▲
Total	1,180	375	362	309	1,046	89%	▲

		MS Final Recommendation Enrollment and Utilization					
Middle School	Capacity	6	7	8	Estimated Enrollment	Estimated Utilization	Trend
Teays Valley East MS	590	203	184	153	540	92%	▲
Teays Valley West MS	590	172	178	156	506	86%	▲
Total	1,180	375	362	309	1,046	89%	▲



Demographic Statistics

The following tables display race and ethnicity statistics by school based on the August 21, 2024 student database

2024-25 ES Enrolled Ethnicity Percentage								
Elementary School	American Indian or Alaska Native	Asian	Black or African American	Hispanic or Latino	Native Hawaiian or Other Pacific	White	Multiple Categories	Unknown
Ashville ES	0%	1%	2%	1%	0%	90%	5%	0%
Scioto ES	0%	1%	2%	2%	0%	88%	6%	0%
South Bloomfield ES	0%	1%	7%	5%	0%	79%	7%	0%
Walnut ES	0%	0%	2%	1%	0%	93%	4%	0%
Total	0%	1%	4%	2%	0%	87%	6%	0%

ES Final Recommendation Ethnicity Percentage								
Elementary School	American Indian or Alaska Native	Asian	Black or African American	Hispanic or Latino	Native Hawaiian or Other Pacific	White	Multiple Categories	Unknown
Ashville ES	0%	1%	2%	1%	0%	90%	5%	0%
Scioto ES	0%	1%	2%	3%	0%	88%	6%	0%
South Bloomfield ES	0%	1%	9%	4%	0%	78%	7%	0%
Walnut ES	0%	0%	2%	1%	0%	93%	3%	1%
Total	0%	1%	4%	2%	0%	87%	6%	0%



Demographic Statistics - Middle Schools

2024-25 MS Enrolled Ethnicity Percentage								
Middle School	American Indian or Alaska Native	Asian	Black or African American	Hispanic or Latino	Native Hawaiian or Other Pacific	White	Multiple Categories	Unknown
Teays Valley East MS	0%	1%	1%	1%	0%	94%	3%	0%
Teays Valley West MS	0%	2%	3%	3%	0%	87%	5%	0%
Total	0%	1%	2%	2%	0%	90%	4%	0%

MS Final Recommendation Ethnicity Percentage								
Middle School	American Indian or Alaska Native	Asian	Black or African American	Hispanic or Latino	Native Hawaiian or Other Pacific	White	Multiple Categories	Unknown
Teays Valley East MS	0%	1%	1%	2%	0%	93%	3%	0%
Teays Valley West MS	0%	2%	4%	2%	0%	87%	5%	0%
Total	0%	1%	2%	2%	0%	90%	4%	0%



Impact Tables

The following tables show how many students are impacted in the Final Recommendation. Rows highlighted in green show areas that are not impacted, and rows highlighted in tan show impacted areas.

Total Students Impacted - Elementary Schools

Student Impact Estimates		
Option	Total PS-5th Live-In Students Impacted	Percent PS-5th Live-In Students Impacted
ES Final Rec	365	16.9%

Detailed Option Impacts - Elementary Schools

ES Zone 2024-25	ES Final Recommendation	Total 2024-25 PS-5th Live-In Students
Ashville	Ashville	420
Ashville	South Bloomfield	25
Scioto	Scioto	478
Scioto	South Bloomfield	72
South Bloomfield	Ashville	52
South Bloomfield	Scioto	216
South Bloomfield	South Bloomfield	403
Walnut	Walnut	500

Total Students Impacted - Middle Schools

Student Impact Estimates		
Option	Total 6-8th Live-In Students Impacted	Percent 6-8th Live-In Students Impacted
MS Final Rec	109	10.6%

Detailed Option Impacts - Middle Schools

MS Zone 2024-25	MS Final Recommendation	Total 2024-25 6-8th Live-In Students
Teays Valley East	Teays Valley East	435
Teays Valley East	Teays Valley West	12
Teays Valley West	Teays Valley East	97
Teays Valley West	Teays Valley West	481



Feeder Patterns

The following tables show the percentage of students from each elementary school that attend each middle school upon graduating 5th grade in both the current zone configurations in the Final Recommendation. A feeder pattern split is necessary to improve utilization balance in the middle schools.

Number of Splits

	ES to MS Splits
Current	0
Final Rec	1

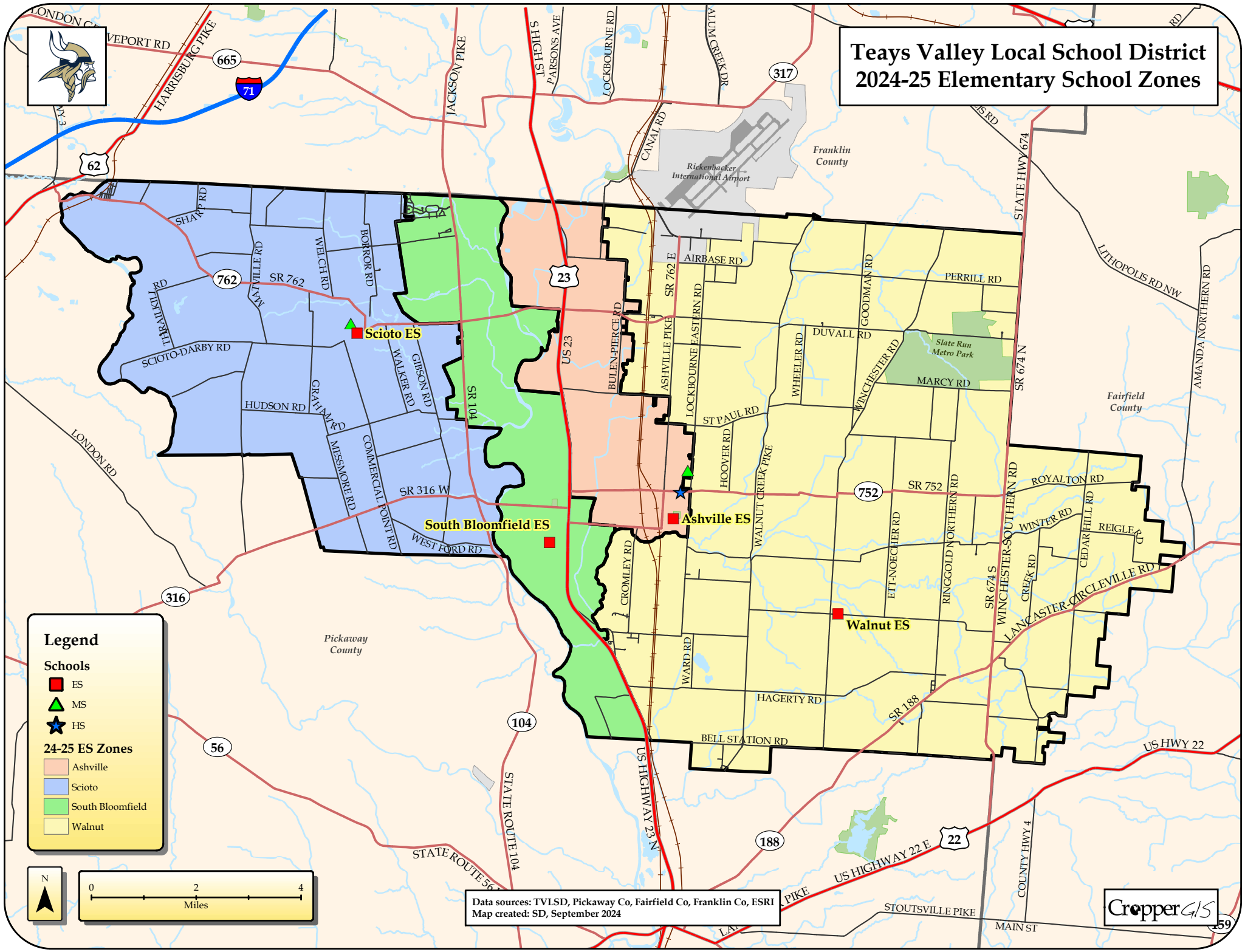
Current ES to Current MS

2024-25 ES Zone	2024-25 MS Zone	ES Attendance
Ashville	Teays Valley East	100%
Scioto	Teays Valley West	100%
South Bloomfield	Teays Valley West	100%
Walnut	Teays Valley East	100%

ES Final Recommendation to MS Option Final Recommendation

ES Final Recommendation	MS Final Recommendation	ES Attendance
Ashville	Teays Valley East	100%
Scioto	Teays Valley West	100%
South Bloomfield	Teays Valley East	39%
South Bloomfield	Teays Valley West	61%
Walnut	Teays Valley East	100%

Teays Valley Local School District 2024-25 Elementary School Zones



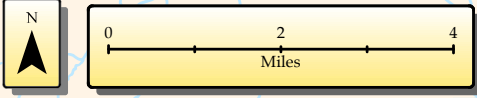
Legend

Schools

- ES
- ▲ MS
- ★ HS

24-25 ES Zones

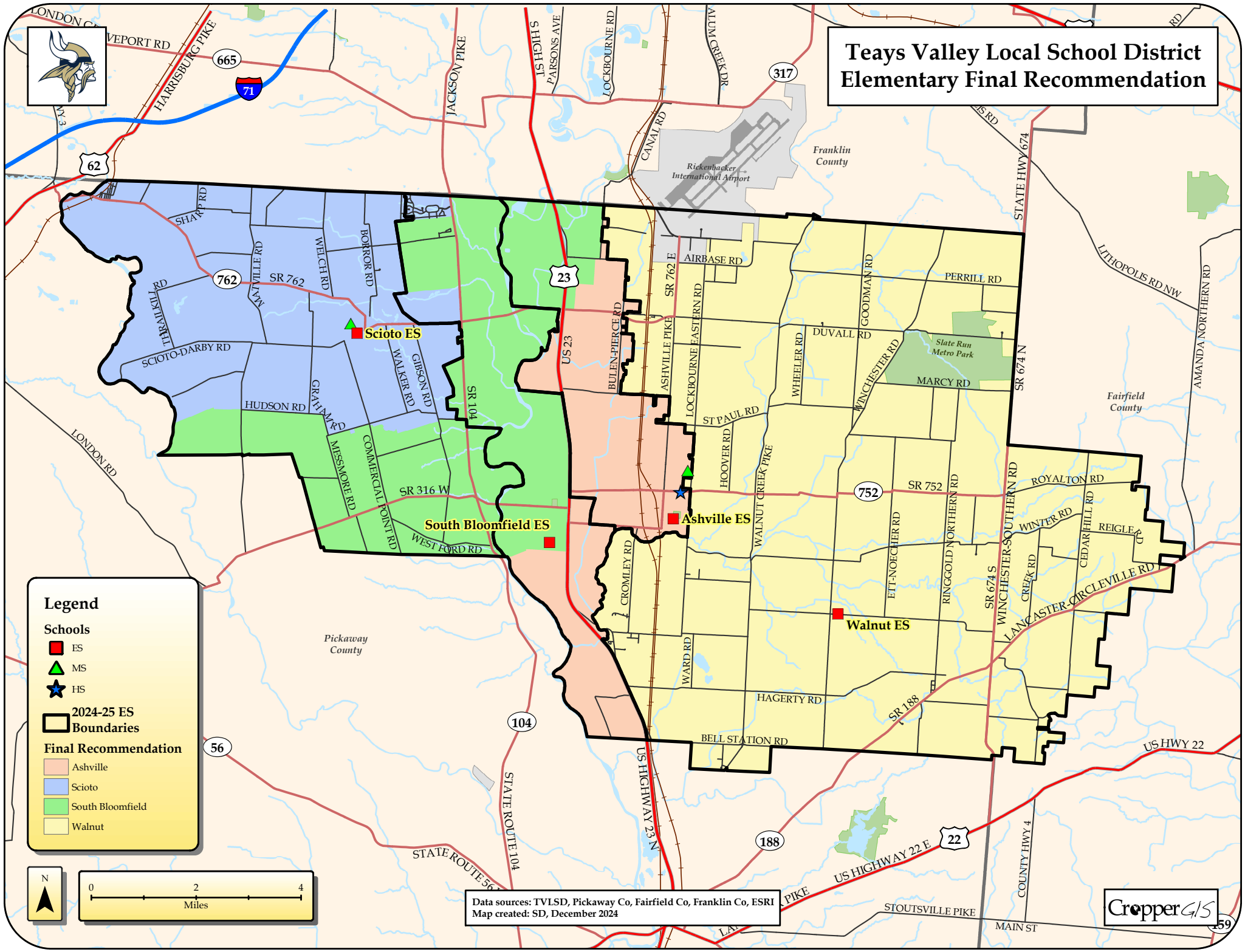
- Ashville
- Scioto
- South Bloomfield
- Walnut



Data sources: TVLSD, Pickaway Co, Fairfield Co, Franklin Co, ESRI
Map created: SD, September 2024



Teays Valley Local School District Elementary Final Recommendation



Legend

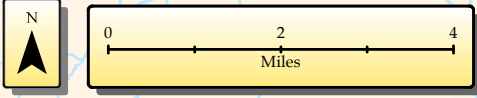
Schools

- ES
- ▲ MS
- ★ HS

2024-25 ES Boundaries

Final Recommendation

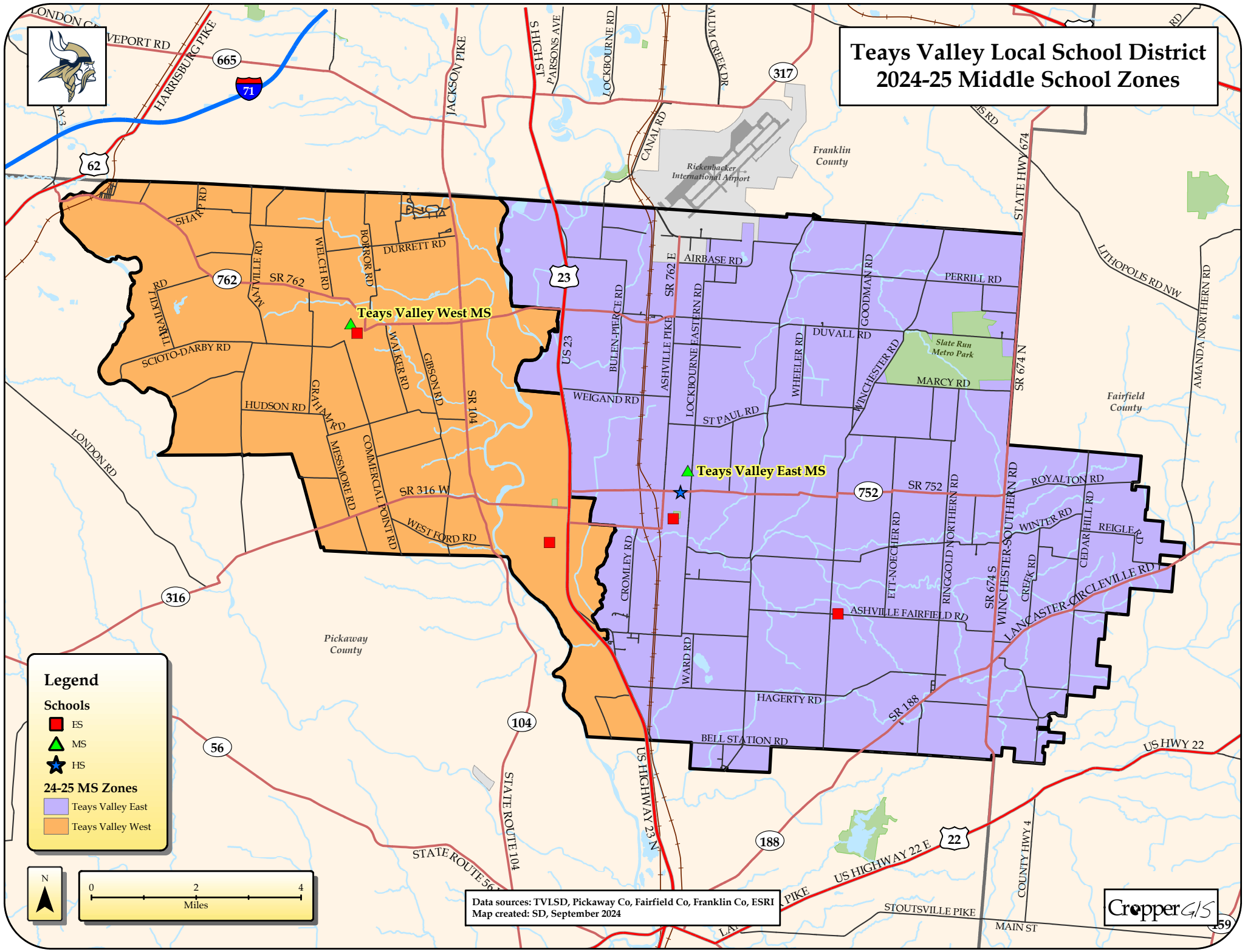
- Ashville
- Scioto
- South Bloomfield
- Walnut



Data sources: TVLSD, Pickaway Co, Fairfield Co, Franklin Co, ESRI
Map created: SD, December 2024



Teays Valley Local School District 2024-25 Middle School Zones



Teays Valley West MS

Teays Valley East MS

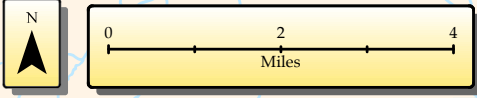
Legend

Schools

- ES
- ▲ MS
- ★ HS

24-25 MS Zones

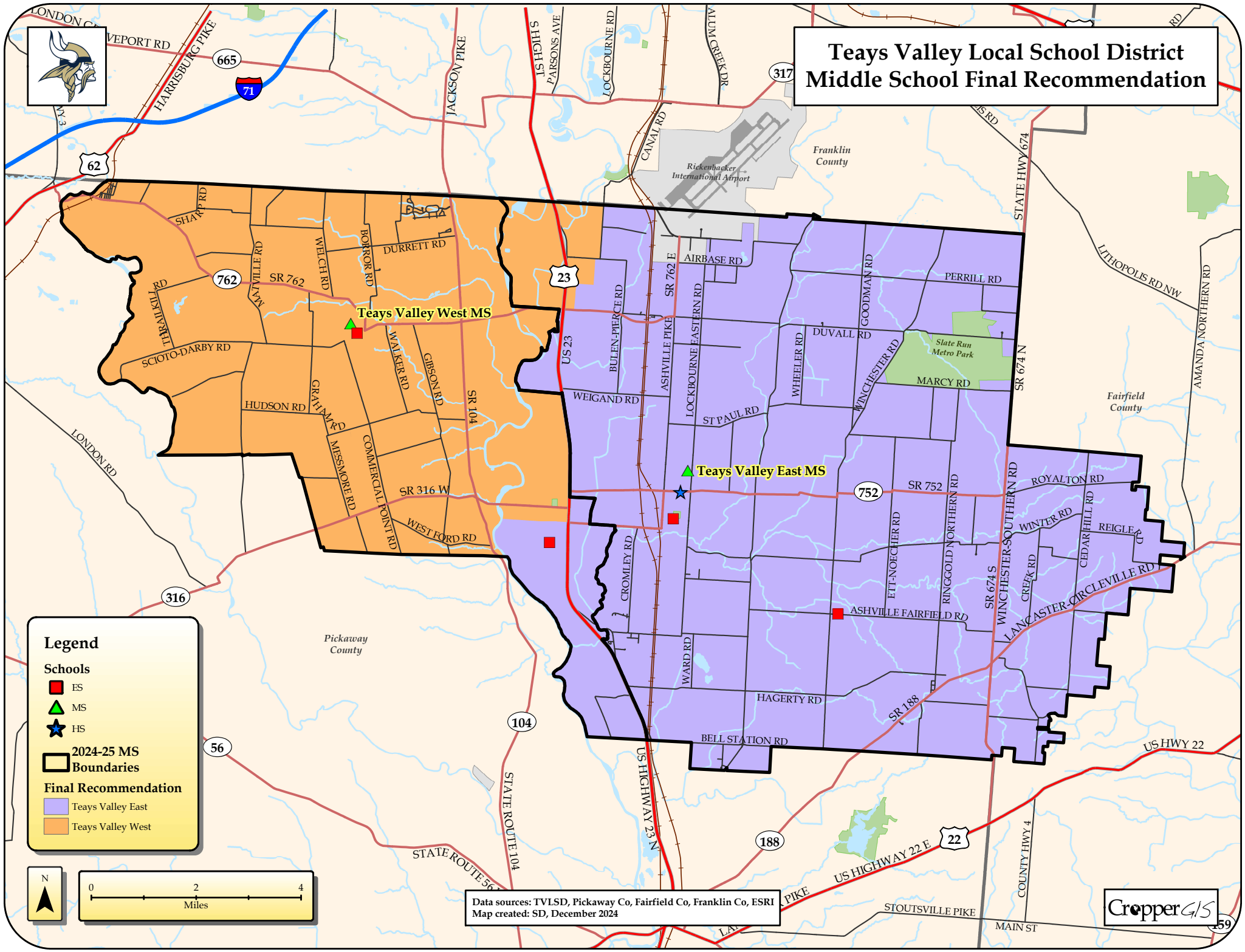
- Teays Valley East
- Teays Valley West



Data sources: TVLSD, Pickaway Co, Fairfield Co, Franklin Co, ESRI
Map created: SD, September 2024



Teays Valley Local School District Middle School Final Recommendation



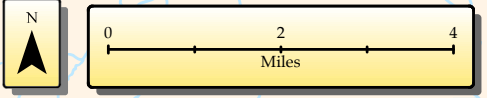
Legend

Schools

- ES (Red square)
- MS (Green triangle)
- HS (Blue star)

2024-25 MS Boundaries

- Teays Valley East (Purple)
- Teays Valley West (Orange)



Data sources: TVLSD, Pickaway Co, Fairfield Co, Franklin Co, ESRI
Map created: SD, December 2024

