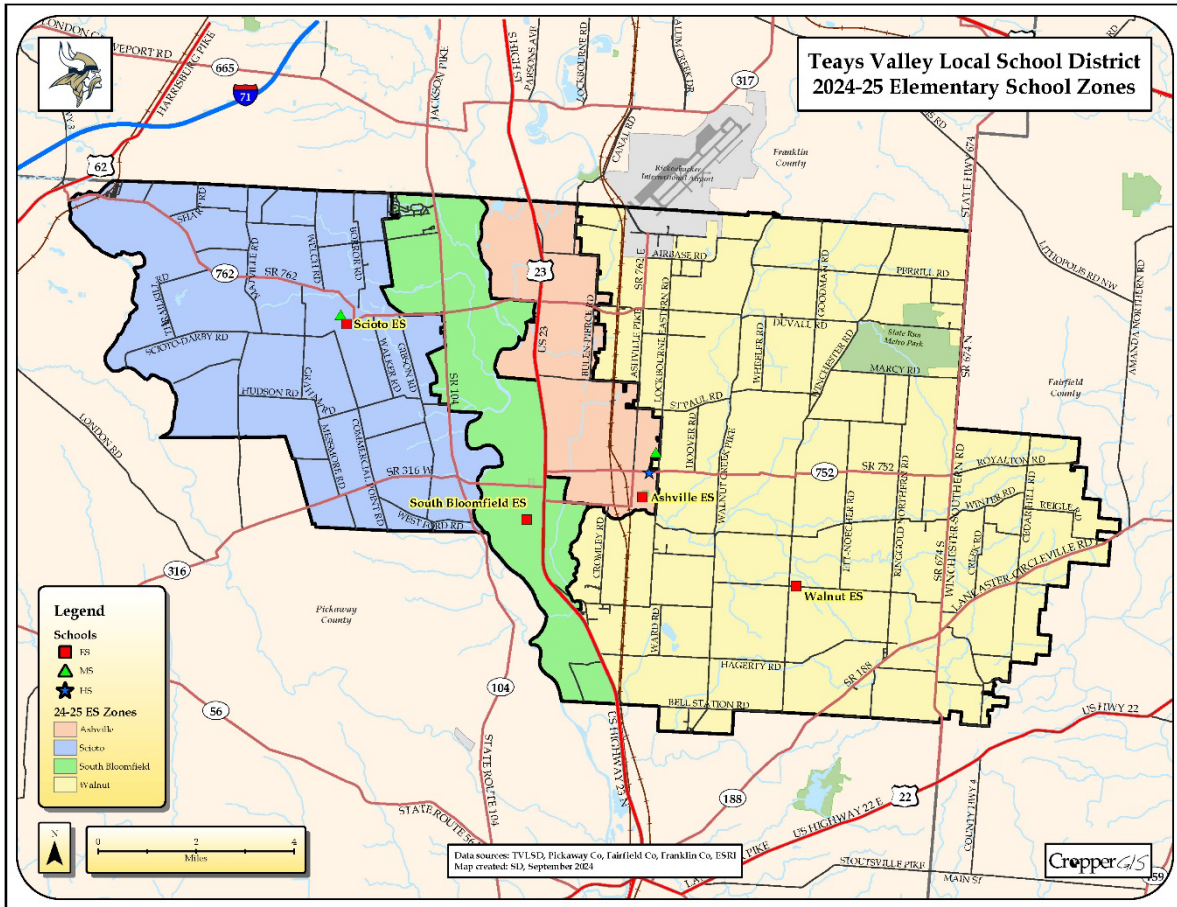




CropperGIS

Teays Valley Local School District 2024 Redistricting Study

Public Information Session 2 Survey Results



Online Survey Results

Introduction

The Teays Valley Local School District internal planning team and staff hosted a public information session on November 12, 2024. Cropper GIS facilitated the meeting and shared information about the planning team goals, guidelines, and process and introduced an elementary and middle school DRAFT option developed by the planning team that helps to meet the redistricting study goals. The public then asked staff and planning team members questions about the process and the options under consideration. Schools continued outreach efforts following the public information session encouraging participation in the online survey.

Online Survey

Forty (40) respondents participated in the online survey that was available to the public from November 12, 2024, until December 1, 2024. The survey asked respondents to provide their thoughts, observations, and overall opinion on the DRAFT options that were presented at the November 12, 2024, public information session and posted on the TVLSD redistricting web site. The data - aggregated, summarized and reported below - is intended to be used by the internal planning team as a tool to help facilitate their deliberation and decision-making regarding the redistricting process. The results of the survey alone do not constitute a decision regarding a boundary change and are not intended to be used in the decision-making process independent of other information, discussion, and deliberation.

In order to gain a better understanding of where the majority of the respondents are coming from throughout the district, the respondents were asked *"What elementary school zone do you live in for the current school year?"*

| Total Respondents by Live-In Elementary Zone | | |
|--|-------------------|------------------------|
| Live-In Elementary Zone | Total Respondents | Percent of Respondents |
| Ashville ES | 2 | 5.0% |
| Scioto ES | 18 | 45.0% |
| South Bloomfield ES | 16 | 40.0% |
| Walnut ES | 3 | 7.5% |
| Out of District | 1 | 2.5% |
| Total | 40 | 100% |

Option Weaknesses Summary Table

The table below shows what respondents considered to be the primary weakness in options they opposed.

| Options Weaknesses | | | | |
|---------------------------|-----------|---------------|-----------|---------------|
| Primary Weakness | ES DRAFT | | MS DRAFT | |
| | n | % | n | % |
| Demographic Impacts | 4 | 10.0% | 4 | 10.5% |
| Neighborhood Continuity | 7 | 17.5% | 10 | 26.3% |
| Transportation Efficiency | 14 | 35.0% | 8 | 21.1% |
| Utilization | 4 | 10.0% | 0 | 0.0% |
| None | 11 | 27.5% | 16 | 42.1% |
| Total | 40 | 100.0% | 38 | 100.0% |

Option Strengths Summary Table

The table below shows what respondents considered to be primary strength in options they approved of.

| Options Primary Strengths | | | | |
|---------------------------|-----------|---------------|-----------|---------------|
| Primary Strengths | ES DRAFT | | MS DRAFT | |
| | n | % | n | % |
| Demographic Impacts | 2 | 5.0% | 1 | 2.6% |
| Neighborhood Continuity | 3 | 7.5% | 0 | 0.0% |
| Transportation Efficiency | 2 | 5.0% | 3 | 7.9% |
| Utilization | 15 | 37.5% | 14 | 36.8% |
| None | 18 | 45.0% | 20 | 52.6% |
| Total | 40 | 100.0% | 38 | 100.0% |

Conclusion

To summarize, the data presented in this summary report will be utilized as a tool to help the planning team prioritize the options. However, the results of the public information session should not be the only deciding factor when reviewing the options due to the uneven distribution of respondents.

ES DRAFT Option

| Respondent Live-In Elementary Zone | What are your thoughts and observations regarding the ES DRAFT Option? |
|------------------------------------|---|
| Ashville ES | N/A; No kids in ES. |
| Ashville ES | I believe the plan overall is good. Transportation issues might be inevitable, especially South Bloomfield students, but is one area that catches my eye. |
| Scioto ES | I would not like to see my children have to transfer schools with the new plan, which according to the map, we would. |
| Scioto ES | Very not fond of the draft option due to division of the neighborhood and the distance is significant to the school compared to the current school. |
| Scioto ES | There are already numerous busing issues the way it is and moving some children further from their current school isn't going to be an easy transition for parents. There are multiple families that built homes in order to attend certain schools in the district. Personally, I drop my kids off on my way to work and moving schools would require backtracking. |
| Scioto ES | We live two minutes from Scioto Elementary on Walker Road. It doesn't seem efficient in terms of transportation time and cost to send our children to South Bloomfield. This issue is also relevant for the neighborhood across from the school. Swapping that neighborhood and our few houses on Walker Road with Southern Point seems to create a greater negative impact. It appears that the impact on students living close to a school location was not thoroughly considered, which seems evident for both the Scioto and South Bloomfield boarders. And, just to note, we did vote for the levy. :/ |
| Scioto ES | It's undoing the last re-districting that was done 6 years ago. Not allowing for growth in Scioto. Most land is in Scioto and land is being sold to developers frequently. Hiring this company to come up with this idea to go back to the way it was is a waste of district money. If it didn't work with southern point at Scioto 6 years ago why would it work now? Maybe we should stop allowing teachers that don't live in the district to bring their kids to school here. |
| Scioto ES | It doesn't make any sense to move kids with a school across the street; to a school 15 minutes away (Walker point) |
| Scioto ES | Horrible idea |

Teays Valley Local School District, OH
 2024 Redistricting Study: Public Information Session 2 Survey Comments

| Respondent Live-In Elementary Zone | What are your thoughts and observations regarding the ES DRAFT Option? |
|------------------------------------|---|
| Scioto ES | <p>I am concerned the district continues to choose the same geographical areas and families to redistrict. There was no mention of the redistricting that occurred 8 years ago and I think this is a big oversight and shows a lack of empathy towards the residents and families that are impacted. To say that the children who were impacted then are on high school now is a flippant and callous remark, as those children maybe be in middle and high school but their households and properties did not change. Parents who had children impacted during that districting are now the exact same parents the school is choosing to again relocate. Saying that it was a success because it bought us 8 years is also a not well thought out response. Is success determined by only impacting one subset of families within your district? It's a success because here we are 8 years later doing it again to the same community members? I have a hard time reconciling this as being successful. You have many communities - there has to be another option where you do not continue to flip flop around the same properties each time there is a utilization issue.</p> <p>We currently live 1.7 miles from Scioto Elementary school and my child rides the bus for more than 30 minutes to and from school each day. In a household with two working parents, bus transportation is imperative. South Bloomfield Elementary is double that distance from our home, which to me other than solving or "utilization " does not solve for any of the other principles that were discussed at the meeting such as proximity or transportation. In a district where we are already struggling to fulfill bus driver obligations- what is the time commitment he will now have to ride the bus? Does that double as well? It seems wholly unreasonable to relocate the 4 elementary school children that live on Gibson road north of Walker road to South Bloomfield just because it matches, or is similar to, the district lines from 8 years ago.</p> <p>I am also concerned and would be interested to see the RFP process that went into selecting a vendor to conduct this research and proposal if the outcome and proposed solution is to continue to uplift the same families as before. More thought needed to go into this decision other than "those kids are in high school now" which is the same response I heard from multiple people last night. The vendor last night also asked to take the emotion out of responses, sure it is not their children impacted by change. Empathy can go a long way.</p> <p>I am not concerned about the staff at any Teays Valley school and feel very strongly that my children will be successful at any TV school they attend. I am more concerned about the justification of doubling bus transportation times for children on my rural street and the continued commitment from TV to relocate the same households every time there is a utilization issue.</p> |
| Scioto ES | <p>We live on Walker Rd, walking distance from Scioto ES and are planned for SBloomfield? For transportation efficiency and neighborhood continuity this plan really misses the mark for homes on Walker Rd (within line of sight of the fire dept) and likely homes north of Thompson/Graham line. We are looking at going from a 2min commute to what would take nearly an hour to get to SB via bus route.</p> <p>Our community is within the Walker Point development, that is where we trick or treat, where we play sports, the parks we use, where we have childcare, etc.</p> |
| Scioto ES | <p>I worry that South Bloomfield will still get overloaded with students and I hate that students from South Bloomfield will get split up when they go to middle school. Middle school is hard enough!</p> |
| Scioto ES | <p>This seems like the best solution to equally divide the number of kids between the buildings. We have no other choice at this time due to the crowding at South Bloomfield.</p> |
| Scioto ES | <p>The ES Draft Options requires many families to now communicate a much longer distance south then turn around to head back north for work as a significant number of families work north of Ashville. This will cause additional traffic and congestion on both 104 and 23 resulting in more safety incidents.</p> |

Teays Valley Local School District, OH
 2024 Redistricting Study: Public Information Session 2 Survey Comments

| Respondent Live-In Elementary Zone | What are your thoughts and observations regarding the ES DRAFT Option? |
|------------------------------------|--|
| Scioto ES | <p>According to this draft the established west side rural communities take the hardest hit. Those of us that bought/built our homes outside of a development, planning our lives around the fact our children will attend Scioto, are punished for the growth of suburb communities that we have no control over. This affects our daily commute, current childcare plans, and established routines. We have lived and established our lives here, given back to this community, and settled in. Was any consideration given to established vs. newcomer impacts?</p> <p>One of the goals was to assign students to the school closest to their homes. This appears vastly ignored for those newly assigned to South Bloomfield. The majority of the rural community nearest Scioto has been reassigned- doubling, tripling the distance to school. Personally, my 5 minute (3.9 miles) commute to Scioto will become a 12+ minute (4.3 miles) commute, additionally adding over 25 minutes to my commute to work. To me, this is only a mild example of the effects to those of us on the West side will face. Does this draft take into account traffic patterns and general flow of the community?</p> <p>I heard that there will be a school levy on the ballot in May of 2025 that may be more in line with what the community wants regarding building new schools. How does this redistricting draft plan relate long term to the goals of the district? Why are options not being considered to temporarily ease South Bloomfield's over enrollment and allow some students to attend Scioto in order to minimize more disruption in the future? You are moving 392 students for minimal overall changes to student totals per school (Ashville gains 15, Scioto gains 39, SB loses 70, and Walnut gains 16). 392 students for a net change at South Bloomfield of 70 students. How will this change if/when we do build new schools? This plan seems like a quick, disruptive, band aid that can become quickly obsolete.</p> <p>This draft plan also requires students who attend South Bloomfield to be split amongst the two middle schools. I strongly disagree this is in the best interest of the students.</p> <p>We can do better.</p> |
| Scioto ES | <p>I understand I'm in the middle of the two elementary schools but when we moved last year we purposely looked for a house to stay at scioto elementary since our middle child has been going there since he was 3 for speech. He has been excelling at scioto and I don't think they school transition would benefit him by any means.</p> |
| Scioto ES | <p>As a parent who has sent my kids to Scioto elementary for the past 3 years I believe that this rezoning is going to cause many other parents upset. I am not happy with sending my kids back and forth to different schools before bringing them to middle school when they are so much closer to commercial point then we are to south Bloomfield. And I get very heated when the superintendent wants to cry and complain about how hard it is to move kids to climate controlled Modular's and how we need to expand, when I was at teays valley middle school we had math in a modular and we moved just fine with no issues and that was actually the only room that had air conditioning. I'm still alive and fine. Teays valley needs to find a treasurer who knows how to budget the money in a manner where you can build because with the amount of taxes the schools receives there is more then enough and especially with the little amount that is paid to the people who work there as well. I feel this is a way the school is mad the levy did not pass and they need to rezone. I moved on this road specifically to send my children to Scioto. Not to south Bloomfield. Change needs to happen but it shouldn't have to be making these kids feel lost and confused at such young ages and as often as you are doing to them. You are disrupting massive amounts of hormones, causing confusion, anxiety, and stress in these young children and will affect their lives for the rest of the future.</p> |
| Scioto ES | <p>I fully support the concept of "legacy enrollment" for our 5th grade students who wish to complete their elementary education with their longtime teachers and peers. This is especially meaningful for students who have spent many years at their school, providing them with one final year together. Additionally, I'm excited that our district is exploring the development of an Early Learning Center for our Preschool families and staff. This initiative will not only free up space at the elementary level, but also allow us to create an age-appropriate learning environment tailored to the unique developmental needs and supports of young children. Although redistricting isn't ideal, I am optimistic about the benefits it will bring to our schools and the opportunities to work with new families at Scioto!</p> |

Teays Valley Local School District, OH
 2024 Redistricting Study: Public Information Session 2 Survey Comments

| Respondent Live-In Elementary Zone | What are your thoughts and observations regarding the ES DRAFT Option? |
|------------------------------------|--|
| Scioto ES | <p>1. You emphasize keeping neighborhoods together but what about the rural areas? Obviously, moving a neighborhood together a child will more than likely get to have someone they know move to the new school with them. But when you live in a rural area you don't necessarily know all the people in proximity to you. How do you determine this is best for a child to move to a new school without having friends move too?</p> <p>2. The draft considers factors such as studying boundaries, diversity, geographical locations, transportation etc but what about social, emotional, and mental health? Have you put aside any money to research these topics and the impacts on students and families?</p> <p>3. The plan is to pull kids from Scioto which will force them to leave their friends, go to South Bloomfield and have to make new friends. Then they have a high chance that they will not get to go to middle school with the new friends they make since some will go to West and the others East. Has this situation been considered and discussed about how this is in the best interest for these children?</p> |
| Scioto ES | <p>We moved from Walker Pointe onto a piece of land across the street. My son went to Scioto during the process of building our new home. We purchased the land specifically so he wouldn't have to move schools. I absolutely understand why this is happening but we live less than a mile from Scioto so I just didn't think that would ever be an issue. I appreciate your time and efforts. Thank you.</p> |
| South Bloomfield ES | <p>Absolutely not about moving my son in his 5th grade year!!!</p> |
| South Bloomfield ES | <p>It is not keeping neighborhoods intact</p> |
| South Bloomfield ES | <p>I do not understand why Southern Point subdivision was not rezoned for Scioto. That is a greater population and the most northern zone. Where as Foxfire is a developing neighborhood with projection for growth but current numbers do not show that current students have moved to the area.</p> |
| South Bloomfield ES | <p>I think that at SB with the projected growth, being at over 90% capacity might not last long.</p> |
| South Bloomfield ES | <p>When I look at the two map options, my daughter would be staying in SBES on one option while in the other, she would be transferring to Ashville. Personally, I like the idea of her going to Ashville instead. I hate the thought of her bus needing to cross 23 everyday to get to her school (way too many accidents there almost daily), driving through the subdivision to get to the school is very inconvenient, parking for any events is horrible, I could continue.</p> <p>I know this change would affect a lot of families but I truly feel this is a great move for the whole district. I want to personally thank everyone on the team for all of the hard work in data analysis and considerations that have been put forth in making the overcrowding issue better.</p> |
| South Bloomfield ES | <p>I would like to know why they are sending kids that live in Scioto crossing to SB (10 minute drive) and moving us to Ashville when we live 0.9 miles from SB.</p> |
| South Bloomfield ES | <p>I would like to know why they are sending kids that live in Scioto crossing to SB (10 minute drive) and moving us to Ashville when we live 0.9 miles from SB.</p> |
| South Bloomfield ES | <p>For SBE it moves a considerable amount of students further away from their school.</p> |
| Walnut ES | <p>My only concern is with the new data showing SBE being the highest Free/Reduced % what does adding PB7 and PB29 do to this percentage? Where is the highest Free/Reduced population currently in SBE?</p> |
| Walnut ES | <p>I wondered if preschool classes were thought about? I feel like moving all preschool classrooms to one location would alleviate some tightness we all feel. At Ashville, we have 3 classrooms currently in use by preschool. If additional teachers are needed, we don't have the rooms- but could if preschool was housed elsewhere. Just a thought I had. Thank you.</p> |
| Walnut ES | <p>The demographics do not take into consideration Economically Disadvantaged students and each schools percentage of students with these students. I believe it is in these students best interest to split them up so that resources can be dispersed to them more appropriately.</p> |

MS DRAFT Option

| Respondent Live-In Elementary Zone | What are your thoughts and observations regarding the MS DRAFT Option? |
|------------------------------------|--|
| Ashville ES | <p>We are located within Planning Block 7, our address is 10001 Bulen Pierce Road. There are 2 Weak parts of the MS Draft Option. They are:</p> <p>1) Neighborhood Continuity: My Daughter is in 6th Grade at TV East. Our Neighborhood (Bulen Pierce Road) is a tight-knit community. My daughter's friends that she has grown up with all live on Bulen Pierce. This redistricting option would directly, and significantly affect the fabric of our neighborhood. There are only 2 kids affected on Bulen Pierce Road that are being moved to West Middle from East Middle. I think that it makes the most sense to keep these neighborhood kids together.</p> <p>2) Transportation Efficiency: Not only is East Middle School closer to our home, it also makes the most sense regarding the bus route. Based on the redistrict option map, the TV East bus route will continue to pass directly in front of our house, as it does now. The bus will pass in front of my house, then continue due north up Shepard Road to Ashville Pike. It would make the most sense to continue keeping 10001 Bulen Pierce road within East Middle School boundaries.</p> <p>Thank you, Glen and Ronde Brushart</p> |
| Ashville ES | I believe the plan overall is good. Transportation issues might be inevitable, but is one area that catches my eye. |
| Scioto ES | NA |
| Scioto ES | The same issues arise as far as transportation goes. |
| Scioto ES | None |
| Scioto ES | No |
| Scioto ES | <p>I am greatly concerned with students crossing over 23. I think we should avoid this at all costs. On the map, it seems like East will be getting the northern side of the district (blooming hills and that trailer park) whereas West gets the duvall kids. Why not leave it as is, so kids don't have to travel over 23? (I know high school is doing that already). Additionally, I thought that one of the goals was to keep students together, like students that go to the same elementary school should go to the same middle school. With this proposal, that causes South Bloomfield kids to get split up! I think we should avoid that if at all possible. It's really nice how currently two elementaries filter into East and two filter into West.</p> |
| Scioto ES | Same as above, we have no choice and this is the best option. South Bloomfield and Scioto districts have a larger number feeding them, so it makes sense that SB must be split to make the MS's even. It is a group of kids moving over, so there is still familiarity there. |
| Scioto ES | The middle school change would not effect us in switching |
| Scioto ES | I truly believe this plan is the best it could be given our situation and I appreciate all the data, minds, and conversations that went into creating it. |
| Scioto ES | N/A |
| Scioto ES | N/A |
| South Bloomfield ES | My child has 50/50 shared parenting in a different part of the division that's being proposed. With the current model he can ride the bus from both houses. With this proposed division he now can't ride the bus from my house. |
| South Bloomfield ES | N/a |
| South Bloomfield ES | My son has gone to West 6th and 7th grade. I live in Scioto Estates and his dad lives in Walker Point. I am the resident parent. This makes it more difficult for us because the map looks like Scioto Estates would be East his 8th grade year. This also makes the majority of the trailer parks attend East further dividing the socioeconomic status of students from East and West. |
| South Bloomfield ES | There is a patch on the north side that over laps 23 east and west that could be switched with a patch around South Bloomfield Elementary. Why aren't the elementary schools staying together as they graduate from 5th to middle school? Again the 2 largest trailer parks are drafted to attend East dividing the socioeconomic status of students. |

Teays Valley Local School District, OH
 2024 Redistricting Study: Public Information Session 2 Survey Comments

| Respondent Live-In Elementary Zone | What are your thoughts and observations regarding the MS DRAFT Option? |
|------------------------------------|--|
| South Bloomfield ES | My only concern would be transportation/daycare. I have had my kids and daycare provider in the same school district for 16 years. I have a 16, 9 and 1 year old. We have both been in South Bloomfield school district the entire time. With the new draft it shows my day care provider going to Ashville Elementary and East Middle school now. My children would need to be able to use the transportation from her home. And having the same day care provider for 16 years would be devastating to my kids and my self to change babysitters. Is there a possibility for us to enroll my kids in Ashville and East middle school when the time comes? I completely understand the need to redistrict but hopefully there can be accommodations made. Thank you! |
| South Bloomfield ES | I think the observations and changes here make alot of sense and would work well in many aspects. |
| South Bloomfield ES | It looks like with the newer neighborhoods they are trying to further push lower income neighborhoods into the same school district. The one area that loses students is from trailers and older homes. If there is an issue with opportunity and support from the school district, separating these communities further widens the gap of opportunities for these kids. Having the perceived poor kids and more diverse households in the same district will further alienate and increase stigmas and prejudice against them from their peers before high school. |
| South Bloomfield ES | I feel like this is taking opportunities away from the kids who are already the most disadvantaged. Putting all of the "poor" kids in the same school is going to make an already awful situation worse for everybody. Especially when a suburb further from my son's middle school can still attend the same school, and my son will be forced to move to a school that has a reputation for underperforming academics, teachers that do not care, and constant behavior issues. Is there a reason we cannot move them - the newest houses here may I add- to the school that they are closer to than us? Are the 4 students in our bus stop so difficult to transport? Because there are more kids there and they are further away, so that does not seem to be the issue. It seems more like instead of finding a solution that meets everyones needs, youre choosing to redraw maps in a nonsensical fashion and make the gap between my sons future and our neighbors children's future a little larger. We share property lines on all sides with people that will still go to the same school. Seems like we have been singled out for not having a large enough home. Also having meetings on weeknights means nobody working evenings or commuting for more than an hour can make it. I am devastated that this is what it means to live in Ohio - that we take the most heartless option because it's the quickest and because the people who have to work the hardest to survive won't have the time to fight. Unbelievable. Don't say it's not upsetting either unless you're volunteering for your kids to swap schools for no reason other than someone decided you're too poor. |
| South Bloomfield ES | Does not keep neighborhood continuity |
| South Bloomfield ES | I believe that keeping the elementary students who have always been together is crucial when coming up with the plan. Switching one development to another school that they've never went to school with can be hard. My child as well as others in Bloomfield hills will have to switch when they have gained friendships over the years. I do believe students who already have attended a MS should be able to finish out their years at that school. My child wants to be homeschooled with the redistricting for her 8th grade year |
| Walnut ES | I am concerned that PB 7 will be difficult for transportation. Could this group of students attend East Middle School instead. This would alleviate busses from being backed up on 762 trying to get to 23/Shepard Rd. I am also curious what this will look like when that area is closed due to construction of the Duvall/762/23 overpass. |

Teays Valley Local School District, OH
 2024 Redistricting Study: Public Information Session 2 Survey Comments

| Respondent Live-In Elementary Zone | What are your thoughts and observations regarding the MS DRAFT Option? |
|------------------------------------|---|
| Walnut ES | <p>I am wondering if moving PB 8 to West and PB 38 to East and possibly also PB 41 to East would be a possibility.</p> <p>This would move 33 students to West and 44 or 54 (depending on if PB 41 were moved) to East. This would help to balance the economically disadvantaged numbers between East and West.</p> <p>PB 39 is a new region for East that likely also has a number of economically disadvantaged families. By using the map as presented last night, East would keep its current economically disadvantaged PB's and add another. With my proposal, I believe these numbers would be more balanced.</p> <p>Also PB 38 will continue to grow and with West experiencing growth more rapidly than East, this would help to reduce future growth at West.</p> |