



Teays Valley Local School District, OH 2024-25 Redistricting Study

-Public Information Session 2-

November 12, 2024

CropperGIS



Welcome and Introductions



Tonight's Purpose

1. **Learn** how the redistricting process has been working.
2. **Review** DRAFT Option for Elementary and Middle Schools
3. **Complete** online feedback form related to the options to provide valuable input regarding options that are being considered.



Project Objectives

With the support of the Board of Education, Teays Valley Local School District is undertaking a redistricting study to address imbalances in school utilization and enrollment, and to pro-actively account for future growth within the district. Teays Valley Local School District has begun a redistricting study to meet the following key objectives:

Primary Objective: Evaluate elementary and middle school attendance boundaries to ensure that building utilization is balanced while accounting for new residential growth within the district.

Secondary Objective: Ensure the district is maintaining equity in each building regarding ethnic and socioeconomic demographics.

Why We're Here



Redistricting Study

Cropper GIS Consulting was hired by Teays Valley Local School District to facilitate and manage the project. Our firm is tasked to:

- A. Develop supporting materials to help facilitate the study.
- B. Facilitate an expert-based process of developing a student redistricting plan.
- C. Empower the community throughout the process.
- D. Leverage expertise to develop logical, efficient, and effective student redistricting options with the planning team.
- E. Recommend a redistricting plan to the School Board.

Why We're Here



Redistricting Criteria

Cropper GIS has developed a body of criteria to guide this student redistricting study. The following criteria are not listed in any particular order of importance:

- **Balance school facility utilization**

Make every effort to have equitable utilization (where possible) across the district and in accordance with school capacities and funded allotment ratios in accordance with state law. Make efficient use of available space.

- **Account for future growth**

Allow for increasing attendance in high growth areas.

- **Close Proximity**

Students should be assigned to the school within the closest proximity to their homes where possible.



Redistricting Criteria

Rules to Follow

- **Maximize busing efficiencies in transportation of students**

Make every effort to account for transportation (school bus and car rider), parent commuting patterns, balance busing travel time, and costs.



- **Minimize impact on students**

Attempt to minimize the number of students impacted when making boundary adjustments.

- **Account for economic, cultural, and ethnic diversity**

Ensure schools are inclusionary and not adversely affected by redistricting decisions.



Redistricting Criteria

Rules to Follow

- **Make every effort to establish contiguous zones**

Avoid creating zones that are not connected to the primary attendance zone, where possible

- **Use major roads and natural boundaries wherever feasible to define attendance zones**

Minimize the number of students who need to cross major roads and other barriers to maximize the safety and security of students and optimize transportation efficiency by containing bus routes within natural boundaries wherever possible to avoid traffic delays and late arrivals.

All criteria are in no particular order or priority, and the best plan is one that touches on all criteria but does not focus solely on one element of the criteria.



Stakeholders



Outline of Stakeholder Responsibilities

Consultant	<ul style="list-style-type: none">• Schedule and facilitate internal planning team meetings.• Communicate updates with planning team, including updated handout and meeting schedule logistics.• Conduct public meetings to solicit feedback related to draft options that are under consideration.• Support the district in providing materials such as presentations, handouts, and online interactive maps for the public's consumption.• Coordinate and summarize online feedback received from general public and internal planning team.
Internal Planning Team	<ul style="list-style-type: none">• Consists of key school district administrators including central office, transportation, planning, and school principals.• Group will work to review draft options that are being developed in preparation to share with the School Board and public.• Review input provided from the consultant and general public regarding draft options and continue to modify maps with a focus on the best solution for all students as a whole.• Share a redistricting plan with the School Board
General Public	<ul style="list-style-type: none">• Informed through website.• Invited to submit comments and input throughout the entire process.• Invited to participate in public information sessions (both virtual and in-person), and to provide input via surveys and online general feedback form.
School Board	<ul style="list-style-type: none">• Charge internal planning team with its responsibilities.• Identify questions the planning team is expected to answer.• Advise staff and the process regarding policy related considerations and other board-level decisions.



Timeline



Process & Timeline for Redistricting

	August 2024	September 2024	October 2024	November 2024	December 2024	January 2025
<i>Data Collection</i>						
<i>Data Analysis / Assimilation</i>						
<i>Redistricting Baseline Options Development</i>						
<i>Internal Planning Team Work (1-2 meetings per month)</i>						
<i>Public Information Session #1 : Present Project Process, Criteria, Timeline, and Redistricting Objectives to Community. Information meeting to public. No Options shared at this point. (Webinar)</i>		9/18				
<i>Public Information Session #2: Present DRAFT Redistricting Options to General Public for Comment/Feedback (In Person)</i>				11/12		
<i>Presentation of Redistricting Plan to the Board of Education</i>					12/16	
<i>Board of Education Vote</i>						1/13



Progress Report



Planning Team's Progress

Work done to date

- We are about 3/4 complete with the process.
- The Internal Planning Team has met four times since September 2024 and has spent many hours between meetings reviewing information.
- The IPT has reviewed 7 variations of DRAFT options since the process started.
 - Started with 2 baseline DRAFT options; additional options generated each meeting based on the Internal Planning Team and general public feedback.



Work done to date

- Data and information examined includes school enrollment and capacity, demographics, transportation data, student impacts, and feedback from members of the public.
- Options are considered DRAFT throughout the process and continued dialog and consideration of data is always encouraged.



Planning Team's Progress

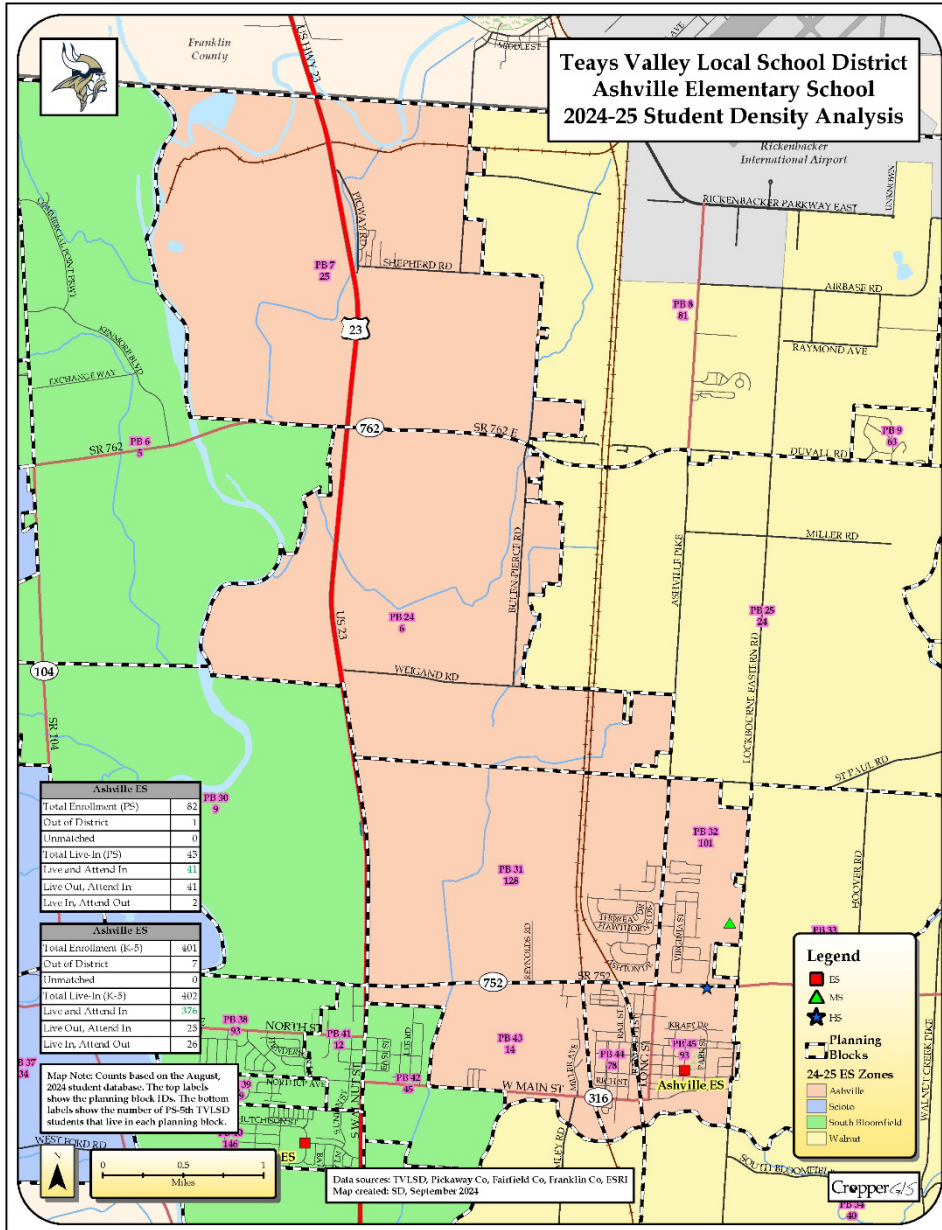
- The planning team's charge is to share one option with the School Board.
- Nothing will be FINAL until the School Board determines the best plan for the district.



Project Approach



Planning Blocks



Planning blocks will be created to help the IPT and public obtain an understanding of the impact on moving an area one way or the other.

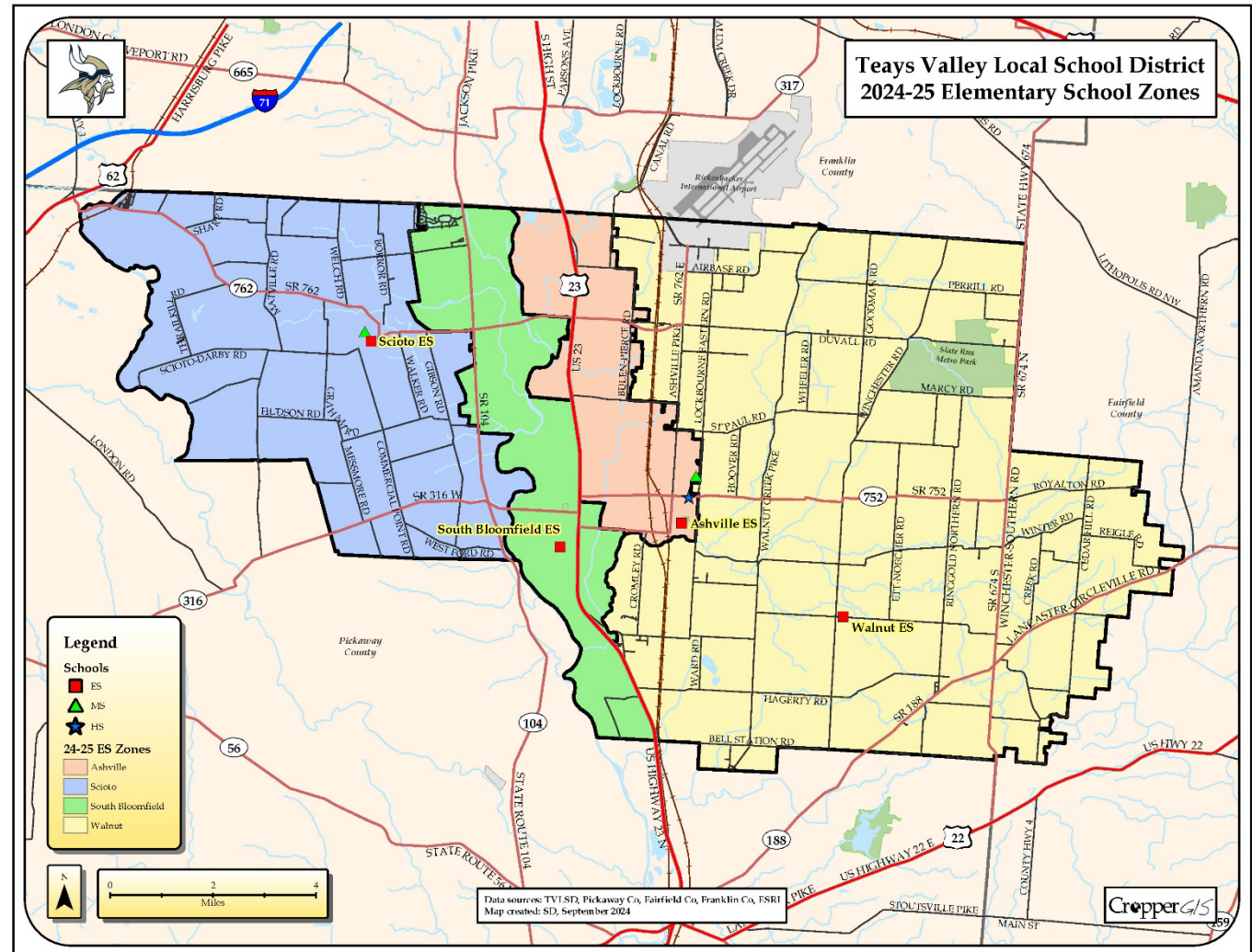
Key data will be analyzed by these planning blocks, such as total number of students living within each block.



2. Data Analysis / Assimilation

Map review : Attendance Zone Maps

- Maps showing attendance zones for all schools, including Elementary, Middle, and High Schools

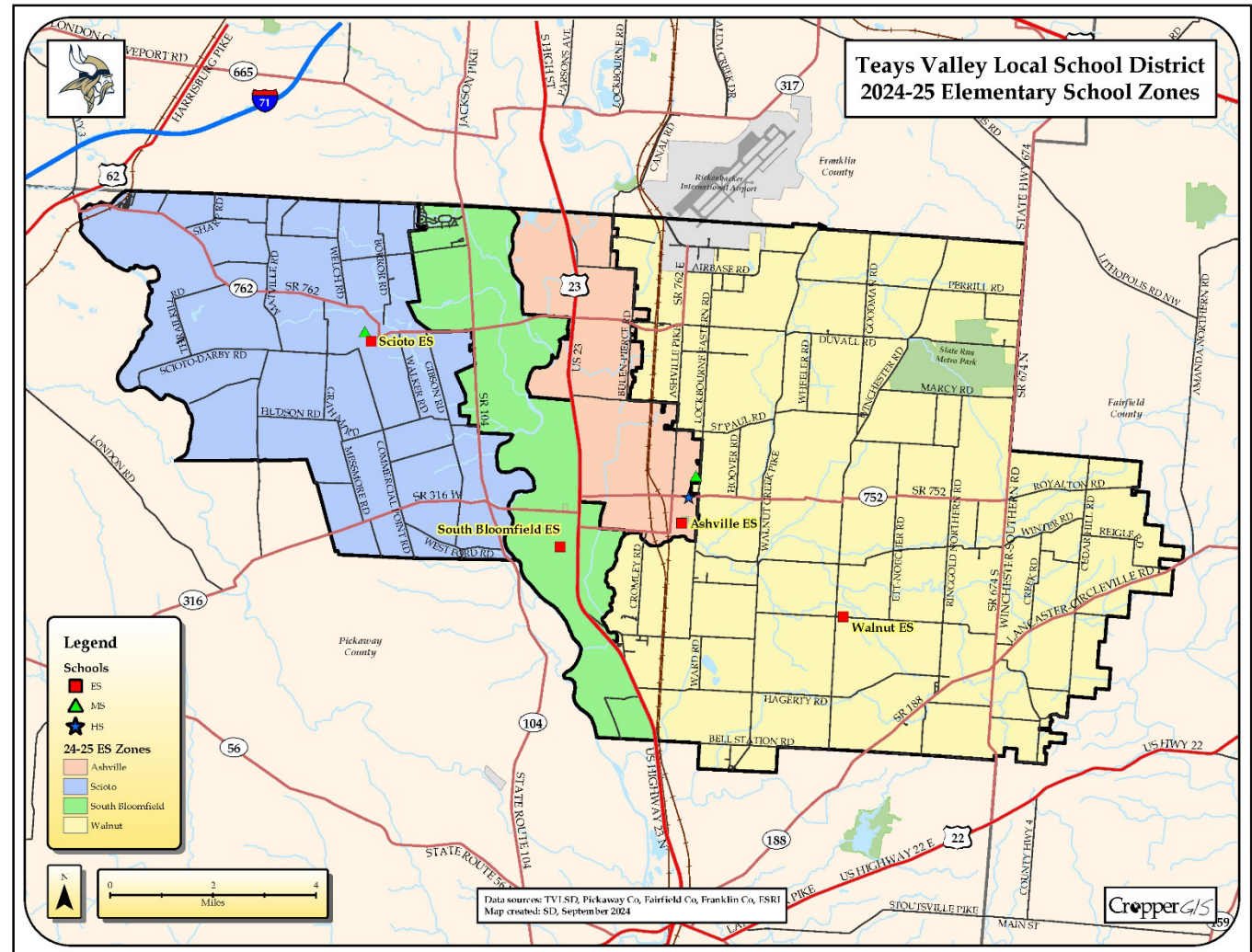




2. Data Analysis / Assimilation

Map review : Attendance Zone Maps

- Maps showing attendance zones for all schools, including Elementary, Middle, and High Schools





Online Map

- An online map has been developed to further inform all stakeholders on the work of the internal planning team.
- Current zones and options can be viewed on the map.
- Other features can be turned on/off on the map, including planning blocks.
- Map is customizable, and can/will be updated during the process to show new options along with other information requested by the internal planning team.
- Site can be viewed on any device, including mobile devices and tablets (with internet connection).
- Site address is:
 - https://croppermap.com/Teays_valley_oh/

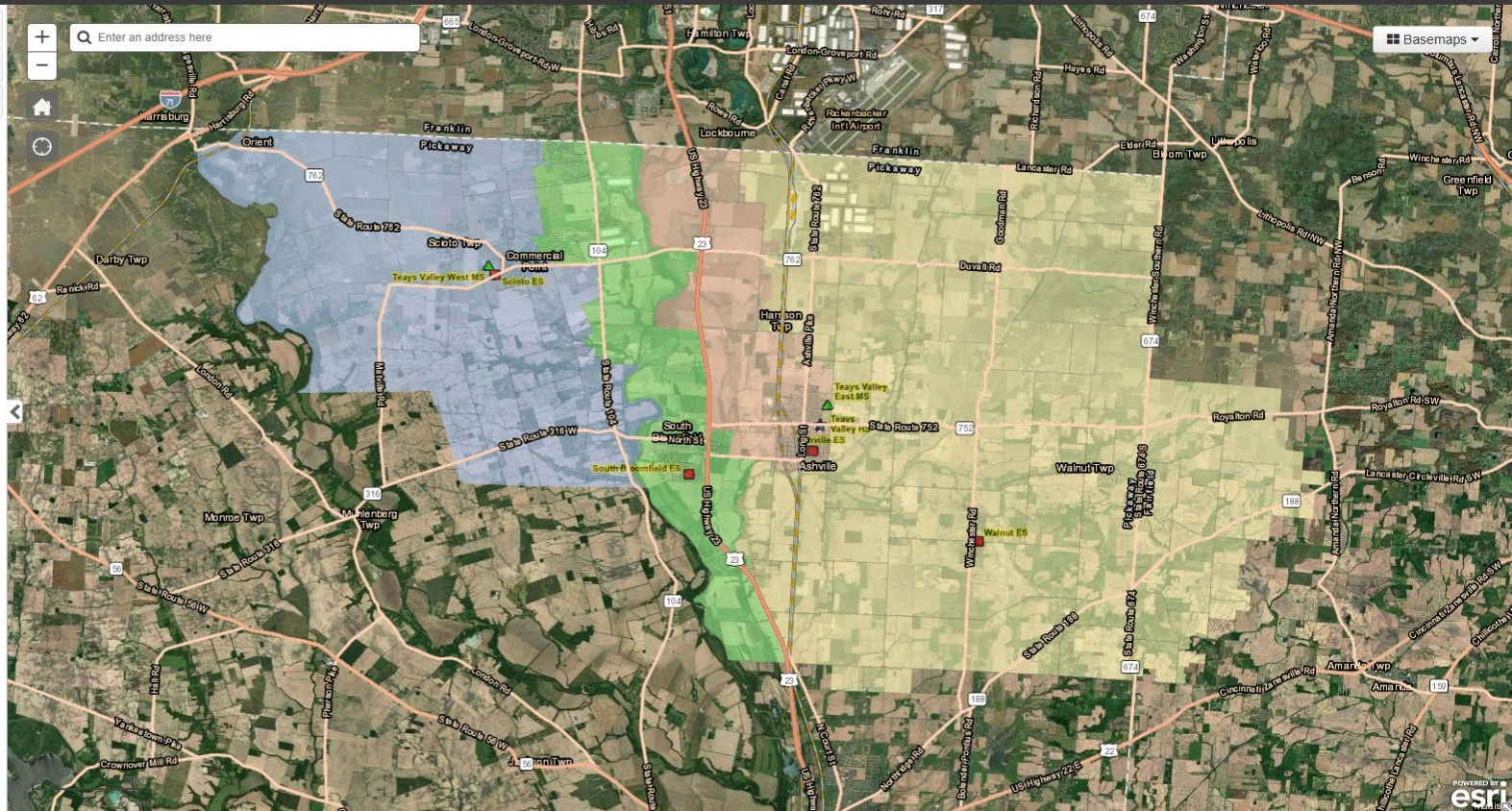


Online Map

Teays Valley, OH

Help

- ▶ View School Boundaries
- ▶ Zoom To School Boundaries
- ▶ Print





Online Feedback Form:

- Begins November 12, 2024 and available through midnight, November 24, 2024:
- *Complete feedback form located at www.tvsdredistricting.com*
 - Feedback form will help provide insight on the public's thoughts about the DRAFT option.
 - The best feedback is constructive comments regarding changes that better adhere to the project objectives and redistricting criteria.
 - Changes will only be made if it brings closer adherence to the objectives and criteria.



Tonight

- *Gallery Walk: Review ES DRAFT Option and MS DRAFT Option and related data, talk to IPT members*
- Internal Planning Team members, TVLSD staff, and consultants will be around the maps to discuss any thoughts the public may have.
- Although discussions around the maps are very important, please submit your feedback via the online feedback form for the entire planning team's benefit.



Next Steps:

- The Internal Planning Team has one more meeting scheduled after tonight's Public Info Session, to discuss the commentary from the feedback form from tonight's Public Information Session.
- The IPT will review additional public feedback from emails and other sources.
- Adjustments could be made to the DRAFT option, if suggestions help to better adhere to the objectives and considerations.



Quick Review of Maps and Statistics



Options Development

The Internal Planning Team, facilitated by Cropper GIS, has been hard at work for the past three months developing options.

Cropper GIS started the process by creating baseline options based on the available data.

The IPT has been meeting multiple times monthly to review and discuss the options, starting with the original baseline options. Each time, the options and have been revised and analyzed again.

Many different approaches have been reviewed, and one option is being presented tonight for elementary schools and one for middle schools, each labeled “DRAFT Option”. The options together are designed to address utilization imbalances throughout the district, while minimizing the impact on students, transportation, and demographic diversity.



Options Statistical Analysis and Maps

We will now review a series of tables that depict statistics for options that are being evaluated.

This information will help inform all stakeholders on how schools could be potentially impacted as a result of potential redistricting adjustments.

All calculations were derived from the district's 2023-24 Enrollment student database dated August 21, 2024.

Glossary of Terms

Capacity - The number of students that an individual school has the physical capacity to enroll and can be reasonably accommodated in a facility.

Utilization - Utilization is the total enrollment divided by the capacity, described as a percentage.

Live-in students - Students residing inside of a school attendance boundary, regardless of where that student attends school.

Live and Attend - Students who attend the assigned schools for the zones where they live.

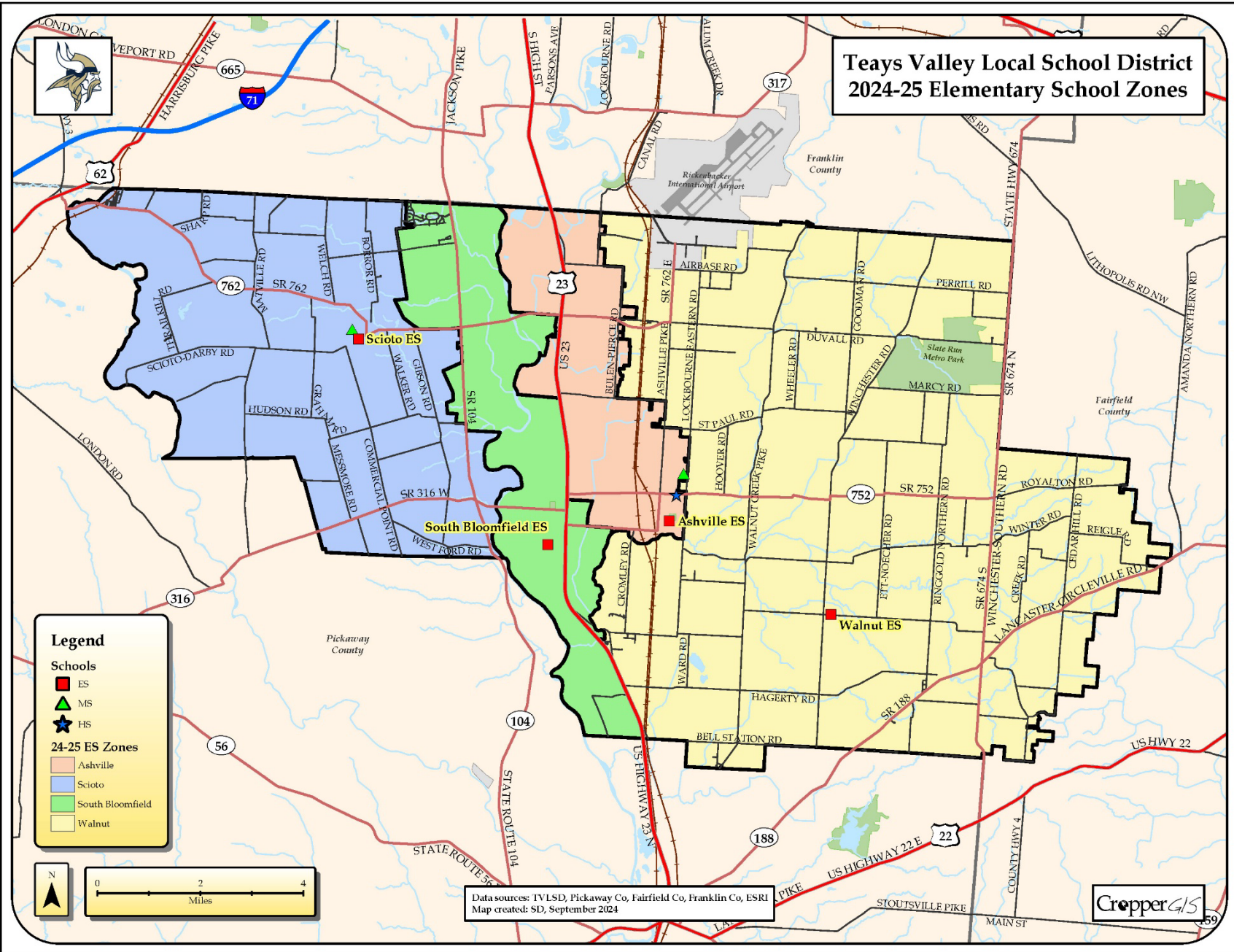
Live Out Attend In - Students that live outside of their attending school's boundary but reside within the Teays Valley Local School District boundary.

Out of District students - Students that live outside of Teays Valley Local School District boundary.

Unmatched students - Students whose address was not able to be located by the GIS.



Teays Valley Local School District 2024-25 Elementary School Zones

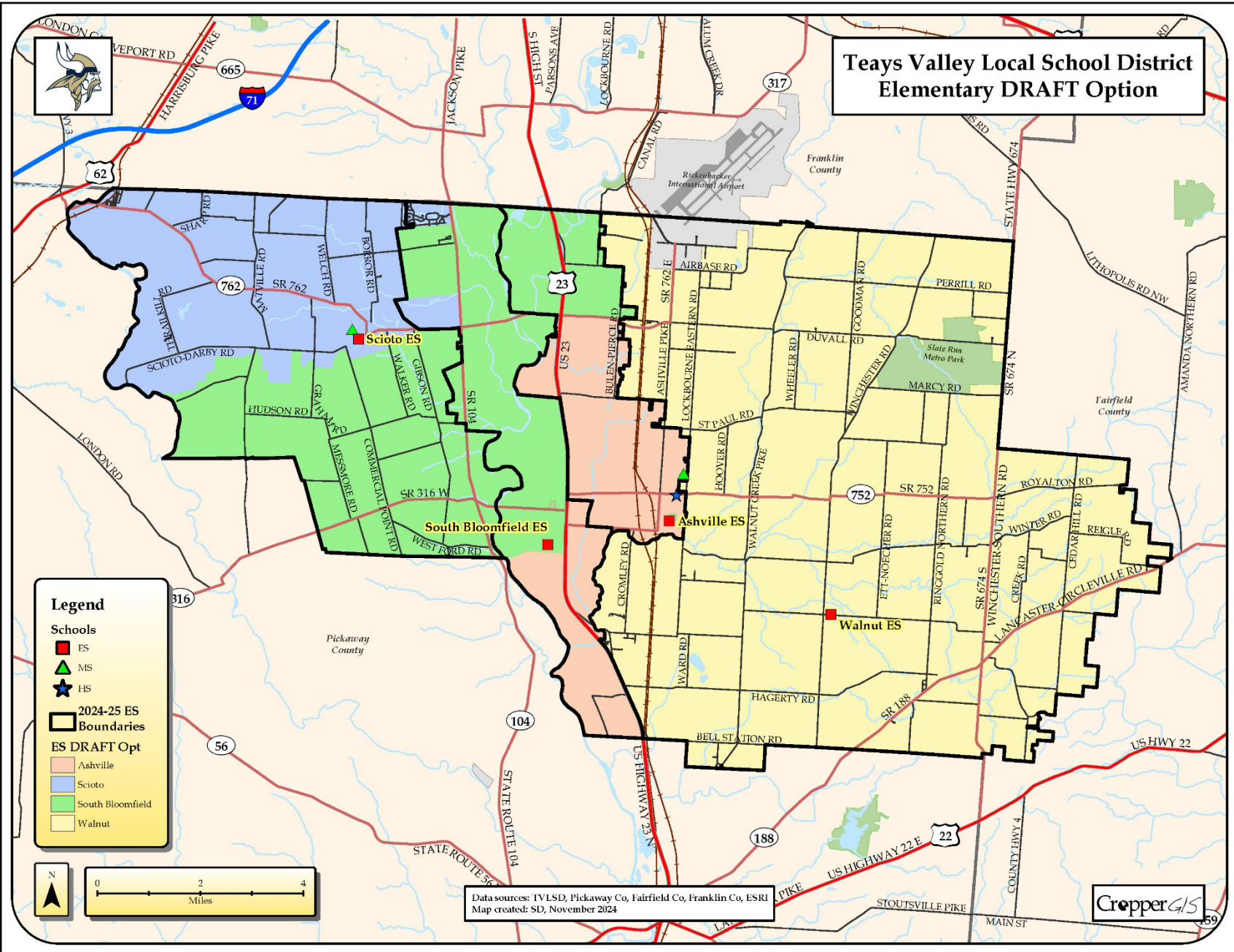


Data sources: TVLSD, Pickaway Co, Fairfield Co, Franklin Co, ESRI
Map created: SD, September 2024





Teays Valley Local School District Elementary DRAFT Option



Legend

Schools

- ES
- ▲ MS
- ★ HS

2024-25 ES Boundaries

ES DRAFT Opt

- Ashville
- Scioto
- South Bloomfield
- Walnut



Data sources: TVLSD, Pickaway Co, Fairfield Co, Franklin Co, ESRI
Map created: SD, November 2024





Within 10%
Between 10-15%
Over/Under 15%

Design vs. Functional Capacity

- Design capacity reflects the total space in a school if every room were full as the building was designed.
- Design capacity does not account for specific needs at the school, such as resource rooms (for small group instruction) or special programs that are offered to students.
- When accounting for room needs to serve students with modern educational delivery, the actual capacity of schools is less than design.
- The tables below reflect school utilization using the design capacity for schools.

2024-25 ES Enrollment and Utilization											
Elementary School	Capacity	PS*	KG	1	2	3	4	5	Current Enrollment	Current Utilization	Trend
Ashville ES	550	41	71	64	72	57	71	66	442	80%	▬
Scioto ES	740	40	92	88	85	103	97	103	608	82%	▾
South Bloomfield ES	550	13	88	91	104	107	79	101	583	106%	▬
Walnut ES	550	3	72	72	84	82	67	88	468	85%	▾
Total	2,390	97	323	315	345	349	314	358	2,101	88%	▾

2024-25 MS Enrollment and Utilization							
Middle School	Capacity	6	7	8	Current Enrollment	Current Utilization	Trend
Teays Valley East MS	590	173	158	131	462	78%	▴
Teays Valley West MS	590	202	204	178	584	99%	▴
Total	1,180	375	362	309	1,046	89%	▴

*Half of actual enrollment of PS students is displayed in this table, due to AM/PM classes.

Using more of a functional capacity figure that adjusts for specific building uses, the current utilization of schools is:

Ashville: 92%
 Scioto: 90%
 South Bloomfield: 116%
 Walnut: 95%

Teays Valley MS: 82%
 Teays Valley West MS: 103%



2024-25 and DRAFT Elementary School Enrollment Statistics (using Design Capacity)

Within 10%
Between 10-15%
Over/Under 15%

2024-25 ES Enrollment and Utilization											
Elementary School	Capacity	PS*	KG	1	2	3	4	5	Current Enrollment	Current Utilization	Trend
Ashville ES	550	41	71	64	72	57	71	66	442	80%	▬
Scioto ES	740	40	92	88	85	103	97	103	608	82%	▼
South Bloomfield ES	550	13	88	91	104	107	79	101	583	106%	▬
Walnut ES	550	3	72	72	84	82	67	88	468	85%	▼
Total	2,390	97	323	315	345	349	314	358	2,101	88%	▼

*Half of actual enrollment of PS students is displayed in this table, due to AM/PM classes.

ES DRAFT Option Enrollment and Utilization											
Elementary School	Capacity	PS*	KG	1	2	3	4	5	Current Enrollment	Current Utilization	
Ashville ES	550	23	73	68	77	63	79	74	457	83%	
Scioto ES	740	30	95	92	112	110	99	109	647	87%	
South Bloomfield ES	550	22	85	80	74	93	73	86	513	93%	
Walnut ES	550	22	70	75	82	83	63	89	484	88%	
Total	2,390	97	323	315	345	349	314	358	2,101	88%	

*Half of actual enrollment of PS students is displayed in this table, due to AM/PM classes.



2024-25 Elementary Demographic Statistics

Within 10%
Between 10-15%
Over/Under 15%

2024-25 ES Enrolled Ethnicity Percentage								
Elementary School	American Indian or Alaskan Native	Asian	Black or African American	Hispanic or Latino	Native Hawaiian or Other Pacific	White	Multiple Categories	Unknown
Ashville ES	0%	1%	2%	1%	0%	90%	5%	0%
Scioto ES	0%	1%	2%	2%	0%	88%	6%	0%
South Bloomfield ES	0%	1%	7%	5%	0%	79%	7%	0%
Walnut ES	0%	0%	2%	1%	0%	93%	4%	0%
Total	0%	1%	4%	2%	0%	87%	6%	0%

ES DRAFT Option Ethnicity Percentage								
Elementary School	American Indian or Alaskan Native	Asian	Black or African American	Hispanic or Latino	Native Hawaiian or Other Pacific	White	Multiple Categories	Unknown
Ashville ES	0%	1%	2%	1%	0%	90%	5%	0%
Scioto ES	0%	1%	2%	3%	0%	87%	7%	0%
South Bloomfield ES	0%	1%	8%	4%	0%	79%	7%	0%
Walnut ES	0%	0%	2%	1%	0%	93%	3%	1%
Total	0%	1%	4%	2%	0%	87%	6%	0%



Elementary Option Impacts

Student Impact Estimates		
Option	Total PS-5th Live-In Students Impacted	Percent PS-5th Live-In Students Impacted
DRAFT Option	392	18.1%

ES Zone 2024-25	ES DRAFT Option	Total 2024-25 PS-5th Live-In Students
Ashville	Ashville	420
Ashville	South Bloomfield	25
Scioto	Scioto	451
Scioto	South Bloomfield	99
South Bloomfield	Ashville	52
South Bloomfield	Scioto	216
South Bloomfield	South Bloomfield	403
Walnut	Walnut	500



Feeder Patterns

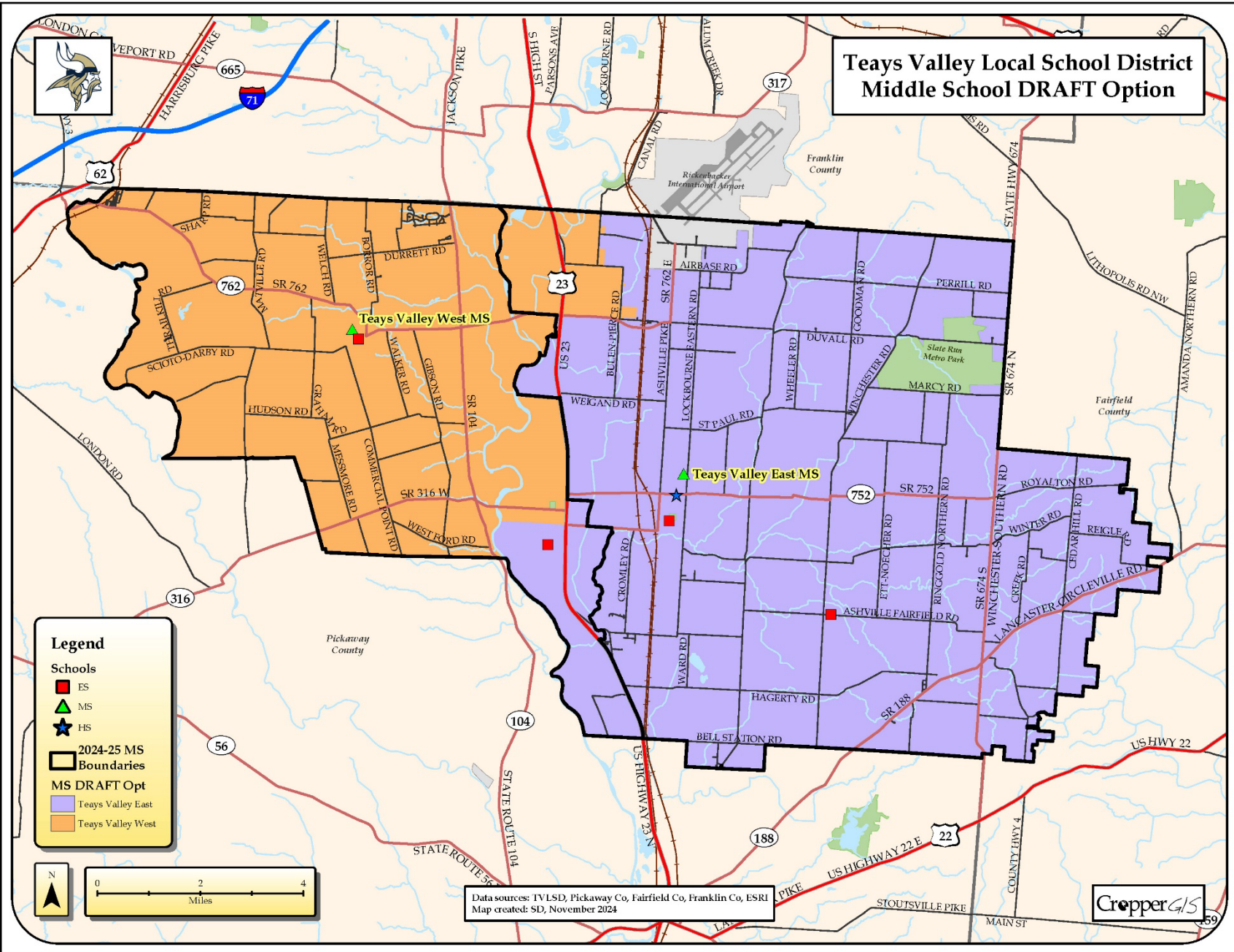
	ES to MS Splits
Current	0
ES to MS DRAFT	1

2024-25 ES Zone	2024-25 MS Zone	ES Attendance
Ashville	Teays Valley East	100%
Scioto	Teays Valley West	100%
South Bloomfield	Teays Valley West	100%
Walnut	Teays Valley East	100%

ES DRAFT Option	MS DRAFT Option	ES Attendance
Ashville	Teays Valley East	100%
Scioto	Teays Valley West	100%
South Bloomfield	Teays Valley East	37%
South Bloomfield	Teays Valley West	63%
Walnut	Teays Valley East	100%



Teays Valley Local School District Middle School DRAFT Option



Legend

- Schools
 - ES (Red square)
 - MS (Green triangle)
 - HS (Blue star)
- 2024-25 MS Boundaries (Black outline)
- MS DRAFT Opt
 - Teays Valley East (Purple fill)
 - Teays Valley West (Orange fill)



Data sources: TVLSD, Pickaway Co, Fairfield Co, Franklin Co, ESRI
Map created: SD, November 2024





2024-25 and DRAFT Middle School Enrollment Statistics (using Design Capacity)

Within 10%
Between 10-15%
Over/Under 15%

2024-25 MS Enrollment and Utilization							
Middle School	Capacity	6	7	8	Current Enrollment	Current Utilization	Trend
Teays Valley East MS	590	173	158	131	462	78%	▲
Teays Valley West MS	590	202	204	178	584	99%	▲
Total	1,180	375	362	309	1,046	89%	▲

MS DRAFT Option Enrollment and Utilization							
Middle School	Capacity	6	7	8	Current Enrollment	Current Utilization	Trend
Teays Valley East MS	590	203	184	153	540	92%	▲
Teays Valley West MS	590	172	178	156	506	86%	▲
Total	1,180	375	362	309	1,046	89%	▲



2024-25 Middle School Demographic Statistics

Within 10%
Between 10-15%
Over/Under 15%

2024-25 MS Enrolled Ethnicity Percentage								
Middle School	American Indian or Alsaka Native	Asian	Black or African American	Hispanic or Latino	Native Hawaiian or Other Pacific	White	Multiple Categories	Unknown
Teays Valley East MS	0%	1%	1%	1%	0%	94%	3%	0%
Teays Valley West MS	0%	2%	3%	3%	0%	87%	5%	0%
Total	0%	1%	2%	2%	0%	90%	4%	0%

MS DRAFT Option Ethnicity Percentage								
Middle School	American Indian or Alsaka Native	Asian	Black or African American	Hispanic or Latino	Native Hawaiian or Other Pacific	White	Multiple Categories	Unknown
Teays Valley East MS	0%	1%	1%	2%	0%	93%	3%	0%
Teays Valley West MS	0%	2%	4%	2%	0%	87%	5%	0%
Total	0%	1%	2%	2%	0%	90%	4%	0%



Middle School Option Impacts

Student Impact Estimates		
Option	Total 6-8th Live-In Students Impacted	Percent 6-8th Live-In Students Impacted
DRAFT Option	109	10.6%

MS Zone 2024-25	MS DRAFT Option	Total 2024-25 6-8th Live-In Students
Teays Valley East	Teays Valley East	435
Teays Valley East	Teays Valley West	12
Teays Valley West	Teays Valley East	97
Teays Valley West	Teays Valley West	481



**Now it is time to migrate to the maps,
where we look forward to having
conversations about the options and
answer any questions you may have.**

**Thank you all for participating in this
important process!**