



Teays Valley Local School District, OH 2024-25 Redistricting Study

-Public Information Session 1-

September 18, 2024

Cropper GIS



Welcome and Introductions



Who We Are



The Company

Cropper GIS Consulting

K-12 school planning is our business and our passion. Our specialty is school realignment.

Cropper works with K-12 school districts to:

- develop redistricting plans,
- facilitate community engagement,
- research, map and write demographic studies,
- prepare long-range facility master plans,
- author site feasibility studies,
- conduct & publish housing impact and yield factor studies, and
- provide GIS implementation & training.

Who We Are

Cropper GIS is an ESRI Authorized Business Partner





The Company

Recent Projects:

- Cincinnati Public Schools, OH
- Columbus Public Schools, OH
- Groveport Madison Schools, OH
- Westerville City Schools, OH
- Worthington Schools, OH
- Dublin City Schools, OH
- Akron Public Schools, OH
- Northwest Local School District, OH
- Monroe Local Schools, OH
- Washington County Schools, IN
- Vigo County Schools, IN
- MSD Washington Township, IN





Matthew Cropper

- More than 20 years experience providing GIS mapping and analysis services to school districts and other clients.
- Manages and Facilitates K-12 redistricting and facility planning projects across the U.S.
- Expert consultant for U.S. Department of Justice, Civil Rights Division
- Published numerous papers about using GIS in master planning and educational planning.



Project Objectives

With the support of the Board of Education, Teays Valley Local School District is undertaking a redistricting study to address imbalances in school utilization and enrollment, and to pro-actively account for future growth within the district. Teays Valley Local School District has begun a redistricting study to meet the following key objectives:

Primary Objective: Evaluate elementary and middle school attendance boundaries to ensure that building utilization is balanced while accounting for new residential growth within the district.

Secondary Objective: Ensure the district is maintaining equity in each building regarding ethnic and socioeconomic demographics.

Why We're Here



Redistricting Study

Cropper GIS Consulting was hired by Teays Valley Local School District to facilitate and manage the project. Our firm is tasked to:

- A. Develop supporting materials to help facilitate the study.
- B. Facilitate an expert-based process of developing a student redistricting plan.
- C. Empower the community throughout the process.
- D. Leverage expertise to develop logical, efficient, and effective student redistricting options with the planning team.
- E. Recommend a redistricting plan to the School Board.

Why We're Here



Redistricting Criteria

Cropper GIS has developed a body of criteria to guide this student redistricting study. The following criteria are not listed in any particular order of importance:

- **Balance school facility utilization**

Make every effort to have equitable utilization (where possible) across the district and in accordance with school capacities and funded allotment ratios in accordance with state law. Make efficient use of available space.

- **Account for future growth**

Allow for increasing attendance in high growth areas.

- **Close Proximity**

Students should be assigned to the school within the closest proximity to their homes where possible.

Rules to Follow



Redistricting Criteria

Rules to Follow

- **Maximize busing efficiencies in transportation of students**

Make every effort to account for transportation (school bus and car rider), parent commuting patterns, balance busing travel time, and costs.



- **Minimize impact on students**

Attempt to minimize the number of students impacted when making boundary adjustments.

- **Account for economic, cultural, and ethnic diversity**

Ensure schools are inclusionary and not adversely affected by redistricting decisions.



Redistricting Criteria

Rules to Follow

- **Make every effort to establish contiguous zones**

Avoid creating zones that are not connected to the primary attendance zone, where possible

- **Use major roads and natural boundaries wherever feasible to define attendance zones**

Minimize the number of students who need to cross major roads and other barriers to maximize the safety and security of students and optimize transportation efficiency by containing bus routes within natural boundaries wherever possible to avoid traffic delays and late arrivals.

All criteria are in no particular order or priority, and the best plan is one that touches on all criteria but does not focus solely on one element of the criteria.



Stakeholders



Outline of Stakeholder Responsibilities

Consultant	<ul style="list-style-type: none">• Schedule and facilitate internal planning team meetings.• Communicate updates with planning team, including updated handout and meeting schedule logistics.• Conduct public meetings to solicit feedback related to draft options that are under consideration.• Support the district in providing materials such as presentations, handouts, and online interactive maps for the public's consumption.• Coordinate and summarize online feedback received from general public and internal planning team.
Internal Planning Team	<ul style="list-style-type: none">• Consists of key school district administrators including central office, transportation, planning, and school principals.• Group will work to review draft options that are being developed in preparation to share with the School Board and public.• Review input provided from the consultant and general public regarding draft options and continue to modify maps with a focus on the best solution for all students as a whole.• Share a redistricting plan with the School Board
General Public	<ul style="list-style-type: none">• Informed through website.• Invited to submit comments and input throughout the entire process.• Invited to participate in public information sessions (both virtual and in-person), and to provide input via surveys and online general feedback form.
School Board	<ul style="list-style-type: none">• Charge internal planning team with its responsibilities.• Identify questions the planning team is expected to answer.• Advise staff and the process regarding policy related considerations and other board-level decisions.



Timeline



Process & Timeline for Redistricting

	August 2024	September 2024	October 2024	November 2024	December 2024	January 2025
<i>Data Collection</i>						
<i>Data Analysis / Assimilation</i>						
<i>Redistricting Baseline Options Development</i>						
<i>Internal Planning Team Work (1-2 meetings per month)</i>						
<i>Public Information Session #1 : Present Project Process, Criteria, Timeline, and Redistricting Objectives to Community. Information meeting to public. No Options shared at this point. (Webinar)</i>		9/18				
<i>Public Information Session #2: Present DRAFT Redistricting Options to General Public for Comment/Feedback (In Person)</i>				11/12		
<i>Presentation of Redistricting Plan to the Board of Education</i>					12/16	
<i>Board of Education Vote</i>						



Project Approach



Four Project Phases

Cropper has identified four phases of a community-driven redistricting study for TVSD:

1. Data Collection
2. Data Analysis / Assimilation
3. Options Development
4. Internal Planning Team

Project Approach



Phase 1. Data Collection (August 2024)

Data availability and quality are central to this redistricting study. Fortunately, Teays Valley Local School District, and Pickaway County GIS, Fairfield County GIS and Franklin County GIS will provide a comprehensive collection of data, including:



- School District- Official enrollment counts by school by grade, along with enrollment databases by address. Data/feedback regarding transportation, school locations, facility information. August 2024 enrollment data is the basis for this study.
- City / County Sources- Base GIS data (address pts, municipalities, subdivisions, existing and planned road networks, etc.)

Data collection efforts have been underway through August, and information will continue to be collected throughout the process if it is deemed useful.

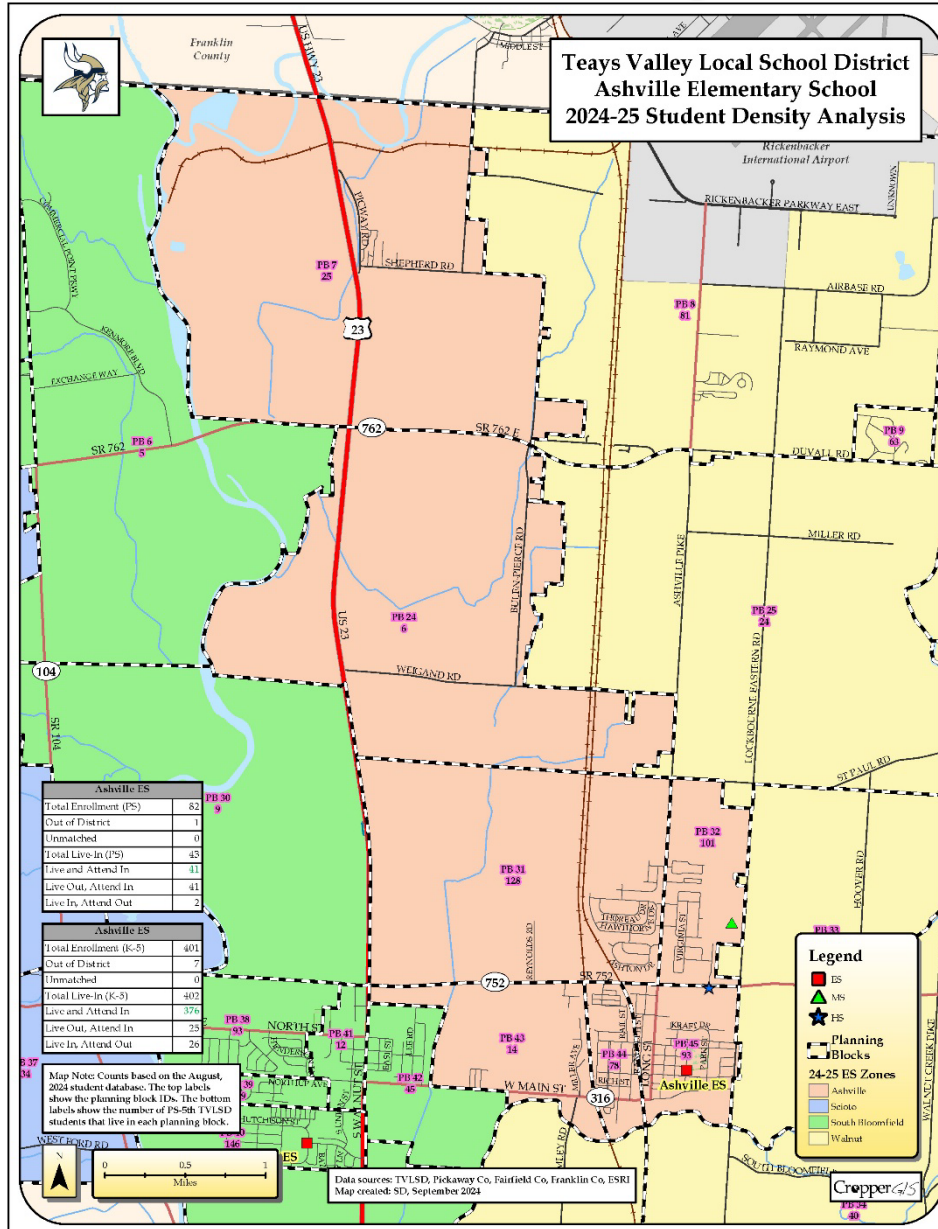


Phase 2. Data Analysis & Assimilation (August - September 2024)

- Cropper is tasked to develop several key pieces of information to help facilitate the redistricting process.
- Once data is collected, it is necessary to integrate it into GIS to enable quick and efficient analysis and redistricting options development.



Phase 2. Data Analysis & Assimilation (August - September 2024)



Planning blocks will be created to help the IPT and public obtain an understanding of the impact on moving an area one way or the other.

Key data will be analyzed by these planning blocks, such as total number of students living within each block.



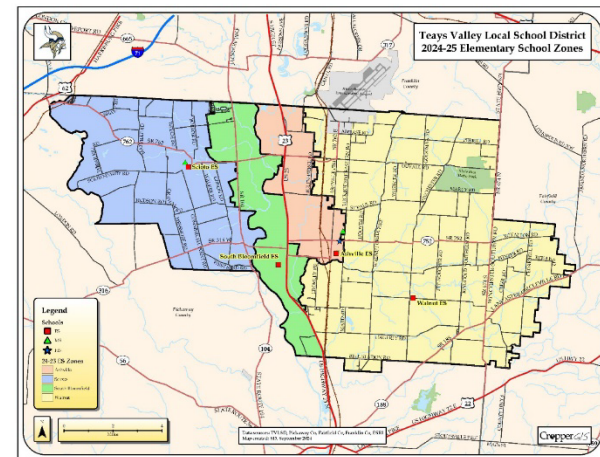
2. Data Analysis / Assimilation: Background Report

- Background Report Purpose:
 - To expand the knowledge of planning team and public
 - To help IPT members and public share a message that is consistent and accurate



Teays Valley Local School District, OH 2024-25 Redistricting Study

Background Report



Cropper GIS



2. Data Analysis / Assimilation: Background Report

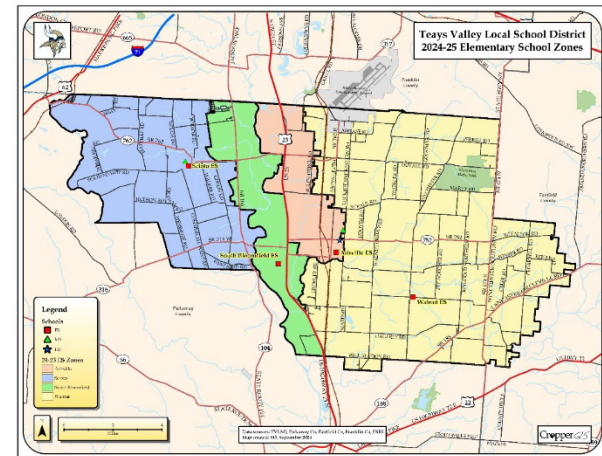
Please be familiar with the entire report, and note some key sections:

- Key Objectives (p.1)
- Redistricting Criteria (p.1)
- Stakeholder Roles and Responsibilities (p.3)
- Timeline (p.4)
- Live-Attend Analysis (Appendix A)
- Maps (Appendix B)
- Enrollment and Utilization Tables (Appendix C)



Teays Valley Local School District, OH 2024-25 Redistricting Study

Background Report

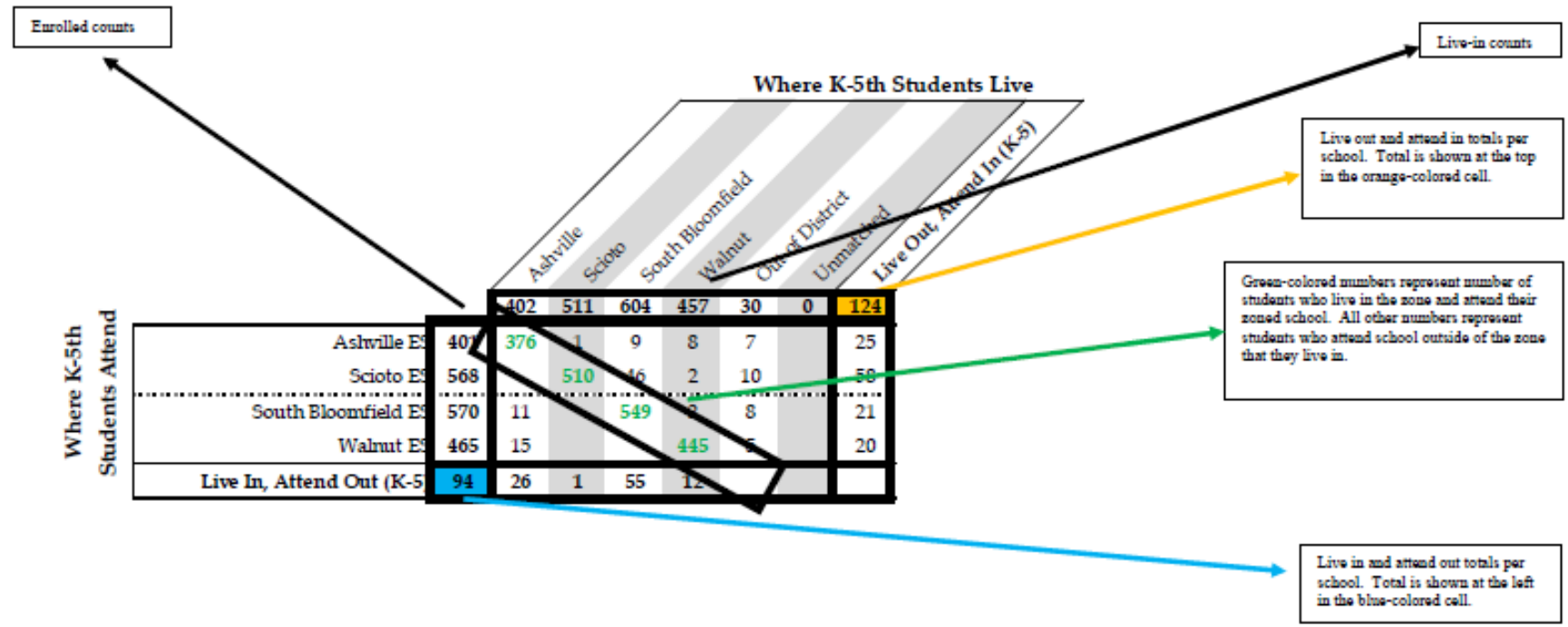


Cropper GIS



2. Data Analysis / Assimilation:

Interpreting Live/Attend Matrices (p. 10)

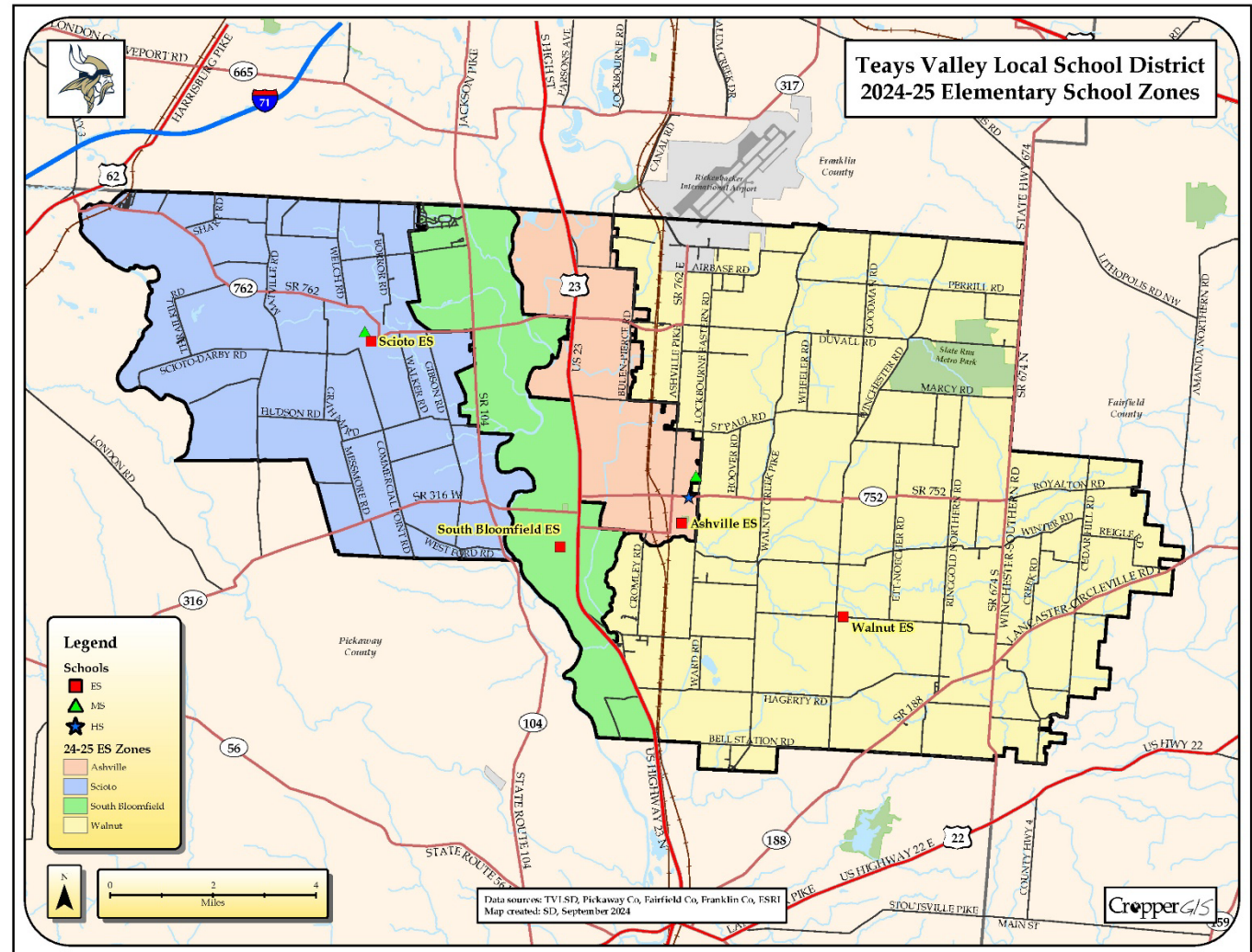




2. Data Analysis / Assimilation

Map review : Attendance Zone Maps

- Maps showing attendance zones for all schools, including Elementary, Middle, and High Schools



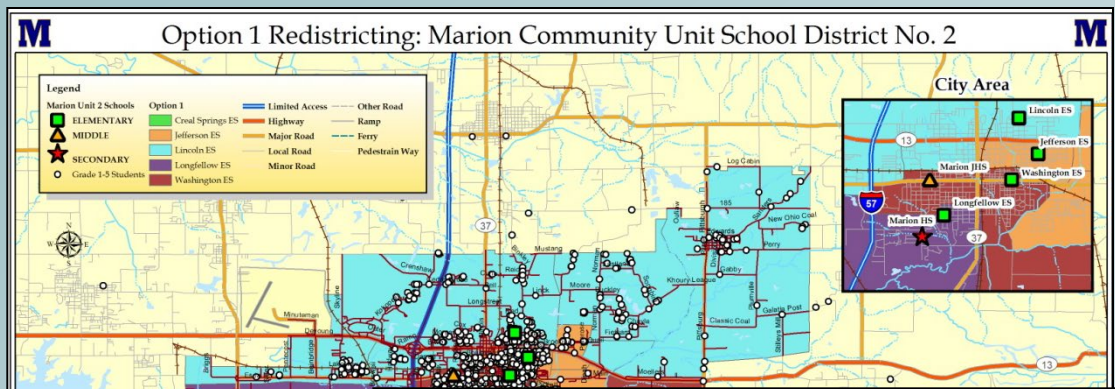


2. Data Analysis / Assimilation

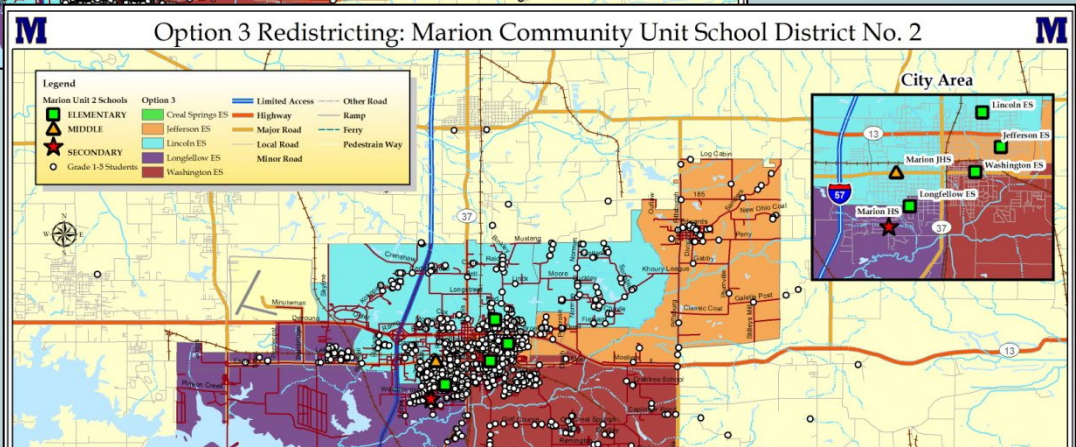
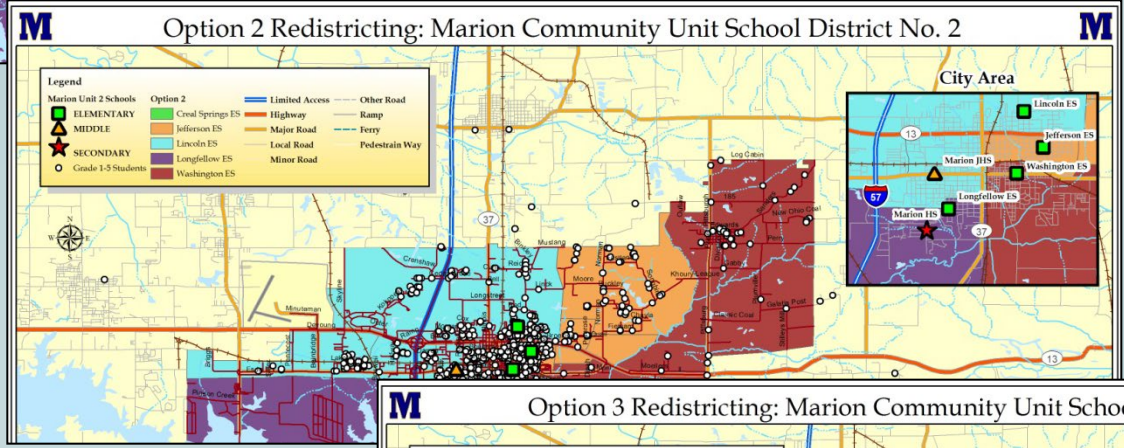
Online Map

- An online map has been developed to further inform all stakeholders on the work of the internal planning team.
- Current zones and options can be viewed on the map.
- Other features can be turned on/off on the map, including planning blocks.
- Map is customizable, and can/will be updated during the process to show new options along with other information requested by the internal planning team.
- Site can be viewed on any device, including mobile devices and tablets (with internet connection).
- Site address is:
 - https://croppermap.com/Teays_valley_oh/

Phase 3. Options Development (September 2024)



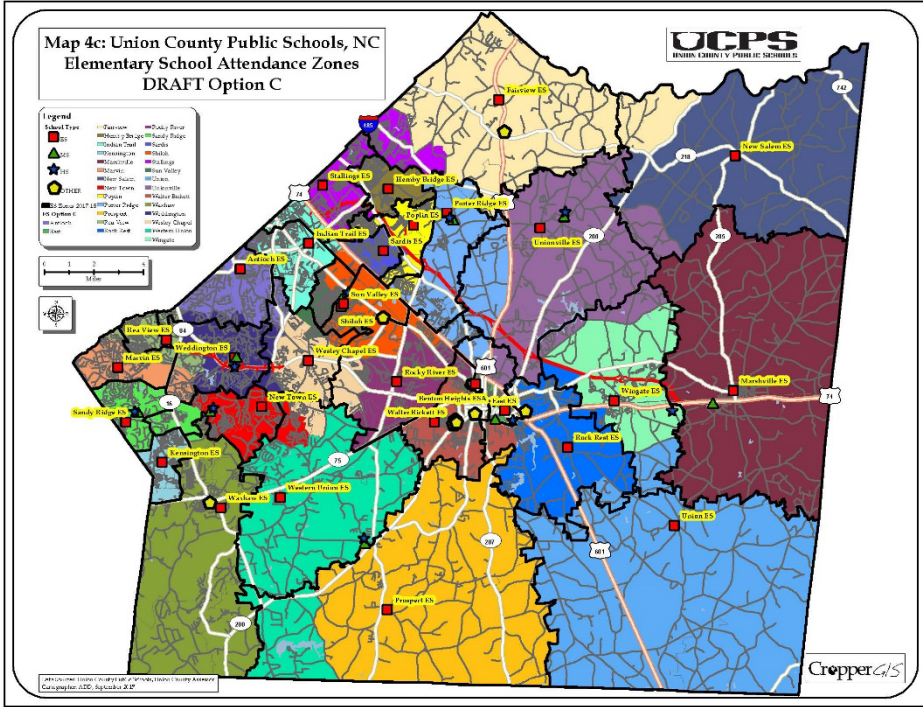
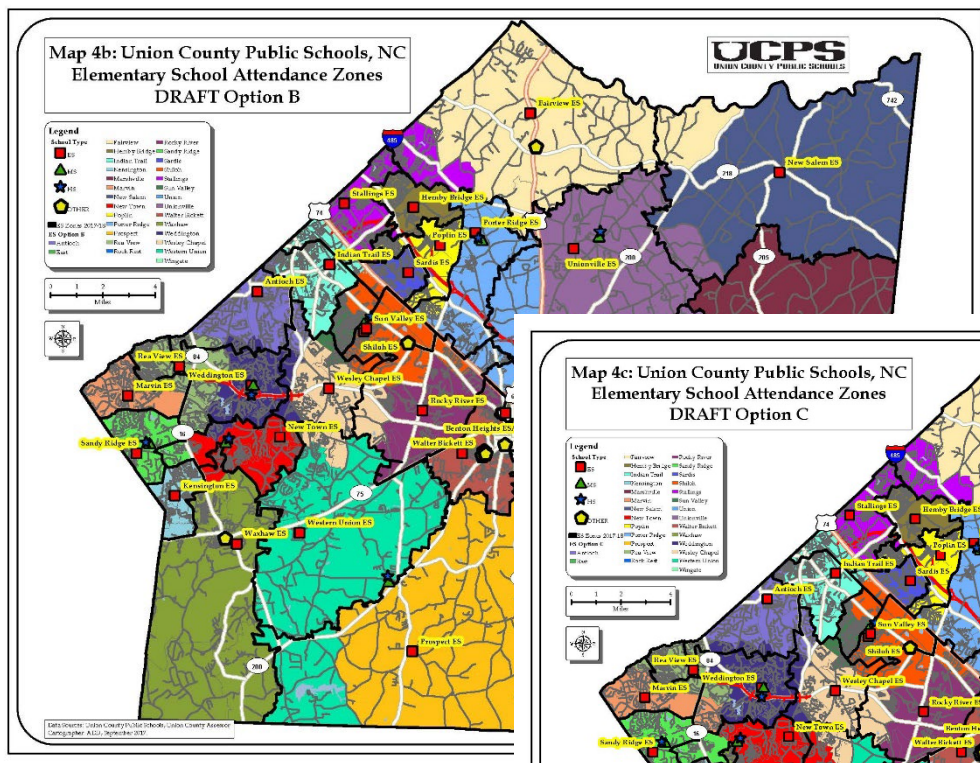
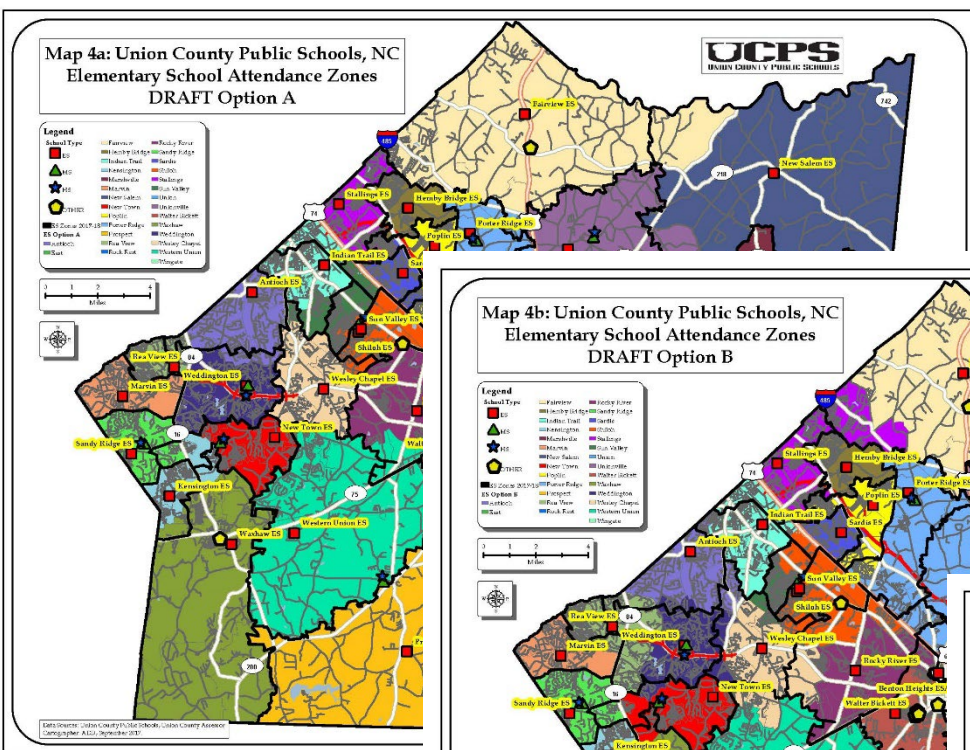
To expedite the process and empower the community, it is best to begin with a series of baseline redistricting options.



Baseline options will be shared with the internal planning team at their 2nd meeting.

Phase 3. Options Development (September 2024)

To expedite the process and empower the community, the best approach is to begin with a series of baseline redistricting options. These options will be developed with the TVLSD redistricting criteria in mind.



- Once the options are presented the IPT may:
- A. Use or disregard baseline options.
 - B. Improve upon the baseline options.
 - C. Develop new options from scratch.



Phase 4. Internal Planning Team (September 2024 - December 2024)

The most important factor when working on a redistricting study is to keep all lines of communication open.

Project Approach





Phase 4. Internal Planning Team (September 2024 - December 2024)

The internal planning team will meet regularly from September 2024 through December 2024 to analyze data, review attendance zones, and develop zone options.

At public information sessions in September and November 2024, the work of the team will be shared, and community members will have an opportunity to discuss planning team work with staff and planning team members. Valuable information will also be gathered via a community survey that will take place after the September public information session.

School Board action is expected to take place in January 2025.



Communication Logistics



Communication Logistics

- **TVSD redistricting process website!**
 - Helps to refer inquiring community to this website to answer questions about the student redistricting process, schedule and a quantity of data and maps.
 - <https://www.tvsdredistricting.com/>
 - An [online feedback form](#) is on this page where any member of the public can provide ongoing input.
 - Materials for the meetings will be posted on the website, either shortly prior to the meeting or the day of.
 - We will attempt to provide materials in advance of the meeting as best as we can.



**In Person Public Information Session 2 is Tuesday,
November 12th**

Large, plot-sized DRAFT Options maps will be presented to the public in a gallery format. After the presentation, members of the public will have the opportunity to explore the maps up close.

The consultant and members of the internal planning team, including school administrators and staff, will be available to answer any questions. An online survey will be made available at that time, to gather public feedback, which will be used to further refine the options.



Questions?