



Teays Valley Local School District, OH 2024-25 Redistricting Study

Background Report

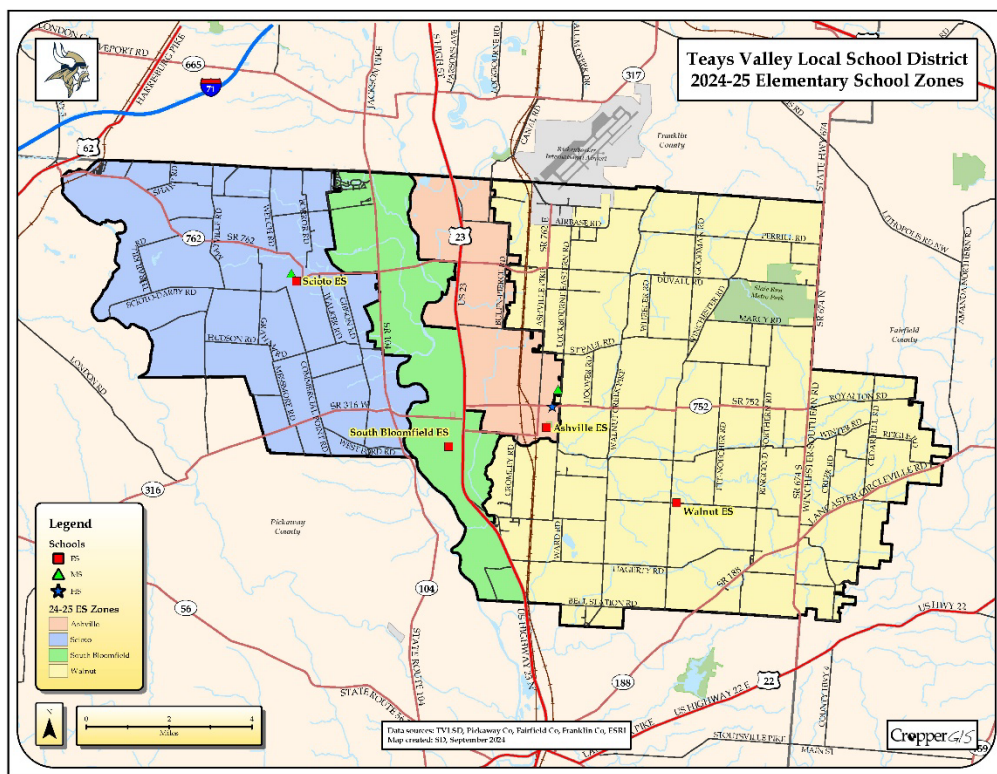




Table of Contents

Table of Contents	
Background and Key Objectives	1
Student Redistricting Study Criteria	1
Student Redistricting Study Process	2
Phase 1. Data Collection	2
Phase 2. Data Analysis / Assimilation	2
Phase 3. Options Development	2
Phase 4. Internal Planning Team and Public Engagement	2
Stakeholder Responsibilities	3
Study Timeline	4
Map Analysis	
Mapping Conventions	5
Series 1: Current Zone Mapping	6
Series 2: Live-Attend Mapping	7
Online Mapping	8
Appendices	
Appendix A: Live-Attend Analysis	9
Appendix B: Live-Attend Maps	13
Appendix C: Enrollment and Utilization	24



Background and Key Objectives

With the support of the Board of Education, Teays Valley Local School District is undertaking a redistricting study to address imbalances in school utilization and enrollment, and to pro-actively account for future growth within the district. Teays Valley Local School District has begun a redistricting study to meet the following key objectives:

- **Primary Objective:** Evaluate elementary and middle school attendance boundaries to ensure that building utilization is balanced while accounting for new residential growth within the district.
- **Secondary Objectives:** Ensure the district is maintaining equity in each building regarding ethnic and socioeconomic demographics.

This background report was prepared to inform the internal planning team called together to lead this study. This report will inform team members in two ways:

1. It will expand the extensive knowledge each team member already has of Teays Valley Local School District.
2. It will help team members share a message with the community that is consistent and accurate.

Teays Valley Local School District contracted Cropper GIS to facilitate this study. Cropper GIS has significant experience facilitating community-based redistricting studies, having assisted school districts of all sizes in Maryland, Virginia, Georgia, Illinois, Indiana, Ohio, New York, and many other states.

The “GIS” in Cropper GIS stands for “geographic information systems.” Geographic information systems consist of people, computer hardware and software. GIS is designed to store, analyze, and output geographic data to support decision making. Maps are the most common GIS output. Because school attendance zones are geographic in nature, GIS is a powerful tool promoting efficient and effective decision making when conducting zone studies.

Student Redistricting Study Criteria

Cropper GIS has developed a body of criteria to guide this student redistricting study. The following criteria are not listed in any order of importance and the recommended plan will be one that best adheres to these criteria as a whole as best as possible:

- **Balance school facility utilization** – Make every effort to have equitable utilization (where possible) across the district and in accordance with school capacities and funded allotment ratios in accordance with state law. Make efficient use of available space.
- **Account for future growth** – Allow for increasing attendance in high growth areas.
- **Close Proximity** – Students should be assigned to the school within the closest proximity to their homes where possible.
- **Maximize busing efficiencies in transportation of students** – Make every effort to account for transportation (school bus and car rider), parent commuting patterns, balance busing travel time, and costs.
- **Minimize impact on students** – Attempt to minimize the number of students impacted when making boundary adjustments.
- **Consider economic, cultural, and ethnic diversity** – Ensure schools are inclusionary and not adversely affected by redistricting decisions.
- **Make every effort to establish contiguous zones** – Avoid creating zones that are not connected to the primary attendance zone, where possible.
- **Use major roads and natural boundaries wherever feasible to define attendance zones** – Minimize the number of students who need to cross major intersections and other barriers to maximize the safety and security of students and optimize transportation efficiency by containing bus routes within natural boundaries wherever possible to avoid traffic delays and late arrivals.



Student Redistricting Study Process

While the rationale behind the student redistricting study process is presented in the Background section, it is important to reiterate that:

- This process is driven by a team of experts within the district but with extensive public participation.
- The process will be facilitated by an outside consultant.
- TVLSD staff will provide data and technical support to the internal planning team.
- Multiple forms of communication will be incorporated into the process.

This study has four phases:

- Phase 1. Data Collection
- Phase 2. Data Analysis / Assimilation
- Phase 3. Options Development
- Phase 4. Internal Planning Team and Public Engagement

Phase 1. Data Collection

Data availability and quality are central to this student redistricting study. Fortunately, Teays Valley Local School District and Pickaway County, Fairfield County, and Franklin County GIS/planning offices have provided a comprehensive collection of system, city, and county data, including:

- A wide array of GIS data;
- Student enrollment data (historic and current);
- Current & planned school facility data;
- Pertinent System policies and procedures.

Data collection efforts have been underway through the summer, and information will continue to be collected throughout the process if it is deemed useful. As the study proceeds, internal planning team and general public members will provide additional information as they bring their experience and perspectives to the study. The public will also provide valuable feedback at the public information meetings and via the community survey that will follow. Finally, TVLSD and Cropper GIS staff will provide data to the internal planning team upon request throughout the life of the study.

Phase 2. Data Analysis / Assimilation

Once data is collected, it is necessary to integrate it into GIS to enable quick and efficient analysis and options development. Data assimilation was completed quickly and efficiently because TVLSD already had some of the data in usable formats.

Phase 3. Options Development

To expedite the process and empower the internal planning team, the best approach is to begin with a series of baseline redistricting options. These options will be developed with the redistricting criteria in mind. Baseline options will be shared with the internal planning team during their second meeting. Once the options are presented the planning team may:

- Use or disregard the baseline options.
- Improve upon the baseline options.
- Develop new options from scratch.

Phase 4. Internal Planning Team

Noted in the timeline on page 4, the internal planning team will meet regularly from September 2024 through December 2024 to analyze data, review attendance zones, and develop zone options. At public information sessions September and November 2024, the work of the team will be shared, and community members will have an opportunity to discuss planning team work with staff and planning team members. Valuable information will also be gathered via a community survey that will take place after the October public information session. School Board action is expected to take place in January 2025.



Stakeholder Responsibilities

TVLSD seeks planning team and community engagement to achieve the key student redistricting study objectives. The table below describes the roles and responsibilities of the stakeholders that will be involved in the student redistricting study.

Outline of Stakeholder Responsibilities	
Consultant	<ul style="list-style-type: none"> • Schedule and facilitate internal planning team meetings. • Communicate updates with planning team, including updated handout and meeting schedule logistics. • Conduct public meetings to solicit feedback related to draft options that are under consideration. • Support the district in providing materials such as presentations, handouts, and online interactive maps for the public’s consumption. • Coordinate and summarize online feedback received from general public and internal planning team.
Internal Planning Team	<ul style="list-style-type: none"> • Consists of key school district administrators including central office, transportation, planning, and school principals. • Group will work to review draft options that are being developed in preparation to share with the School Board and public. • Review input provided from the consultant and general public regarding draft options and continue to modify maps with a focus on the best solution for all students as a whole. • Share a redistricting plan with the School Board
General Public	<ul style="list-style-type: none"> • Informed through website. • Invited to submit comments and input throughout the entire process. • Invited to participate in public information sessions (both virtual and in-person), and to provide input via surveys and online general feedback form.
School Board	<ul style="list-style-type: none"> • Charge internal planning team with its responsibilities. • Identify questions the planning team is expected to answer. • Advise staff and the process regarding policy related considerations and other board-level decisions.



Study Timeline

The following page presents the study timeline. The timeline places a significant time commitment on student redistricting study internal planning team members from September 2024 through December 2024. Internal planning team members are expected to:

- Meet at least eleven times throughout the duration of the study to analyze attendance zone options.
- Help facilitate two public information sessions by answering questions that the public may have about maps and statistics.

Process & Timeline for Redistricting

	August 2024	September 2024	October 2024	November 2024	December 2024	January 2025
<i>Data Collection</i>						
<i>Data Analysis/Assimilation</i>						
<i>Redistricting Baseline Options Development</i>						
<i>Internal Planning Team Work (1-2 meetings per month)</i>						
<i>Public Information Session #1 : Present Project Process, Criteria, Timeline, and Redistricting Objectives to Community. Information meeting to public. No Options shared at this point. (Webinar)</i>		9/18				
<i>Public Information Session #2: Present DRAFT Redistricting Options to General Public for Comment/Feedback (In Person)</i>				11/12		
<i>Presentation of Redistricting Plan to the Board of Education</i>					12/16	
<i>Board of Education Vote</i>						

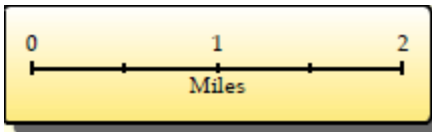


Map Analysis

Maps provide the opportunity to examine physical and social geography and to discover relationships between places. Maps are included in Appendix B and are given brief analysis here. While this analysis is helpful, each planning team member is urged to closely analyze these maps and share their analysis with other planning team members. The local knowledge and personal insight that each planning team member brings to map analysis will add valuable perspective to this study.

Mapping Conventions

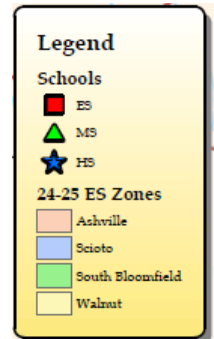
When analyzing the maps in Appendix B, keep in mind these common mapping conventions used in each map.



Each map will include a graphic scale bar to indicate distance between features. A graphic scale bar is very helpful to readers who download the background report and use a “zoom” function to examine a small area of a map in detail. Each map will also contain a North Arrow that will help the map viewers determine the direction.



Each map has a legend showing common symbology used in all maps and, sometimes, symbology unique to a single map. Common symbols are used for schools. Squares are elementary schools (red, in color copies). Triangles are middle schools (green, in color copies). Stars are high schools (blue, in color copies). In addition to school location symbology, the legend also shows the color of each individual zone in the map.

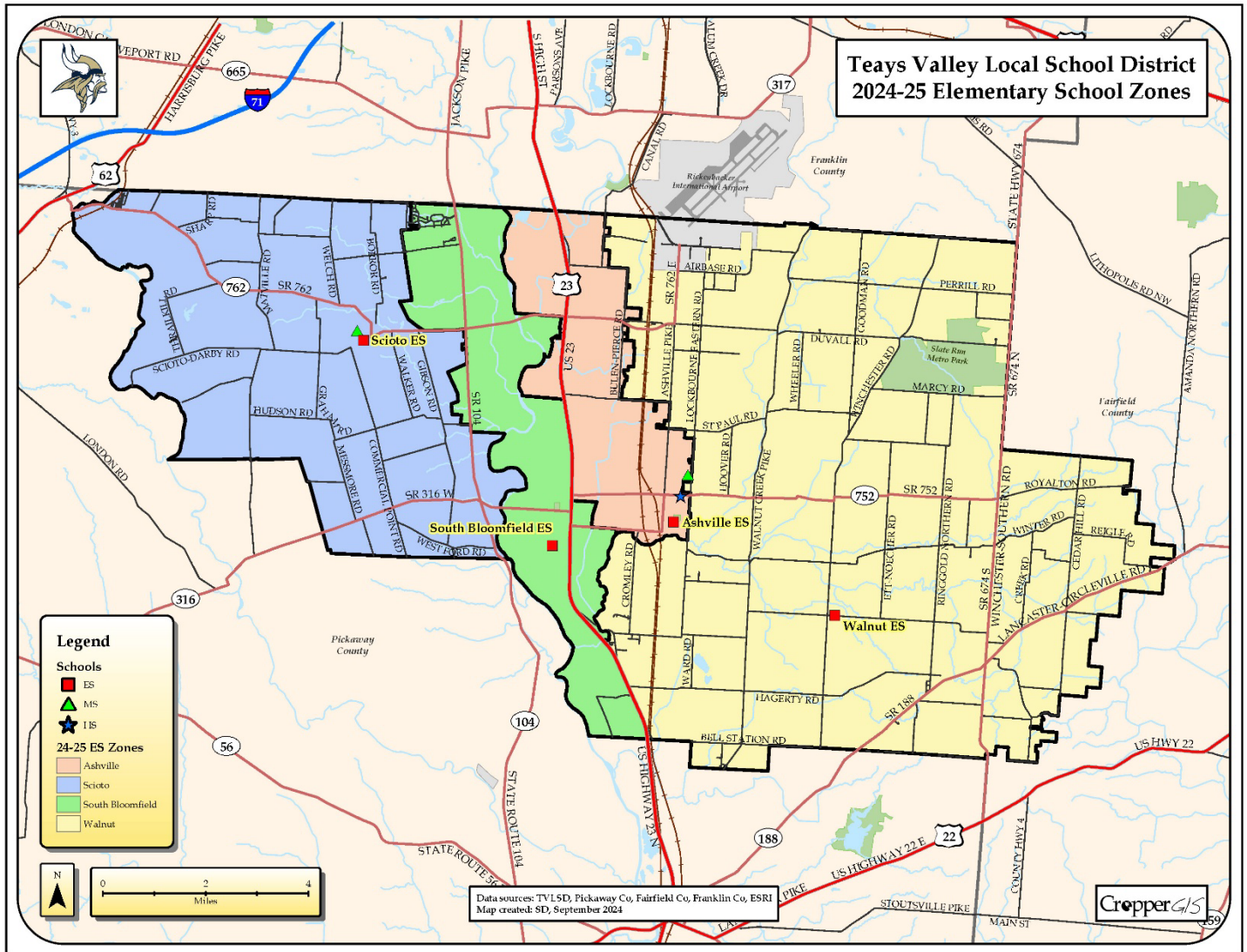




Series 1: Current Zone Mapping

Teays Valley Local School District, OH, Elementary School Attendance Zones 2024-25

The image below depicts the current 2024-25 Teays Valley Local School District Elementary School Zones. Detailed maps for each grade cohort may be found in Appendix B.





Series 2: Live-Attend Mapping

Teays Valley Local School District, OH, 2024-25 Ashville Elementary Live-Attend Analysis

Map Series 2, located in Appendix B, shows each elementary zone within Teays Valley Local School District along with tables that describe the Live-Attend statistics of each school’s student population. Here is an example guide for reading these tables:

Ashville ES	
Total Enrollment (K-5)	401
Out of District	7
Unmatched	0
Total Live-In (K-5)	402
Live and Attend In	376
Live Out, Attend In	25
Live In, Attend Out	26

Total Enrollment (K-5) - number of K-5th students attending Ashville ES.

Out of District - number of students who live outside of the Teays Valley Local School District yet attend this school.

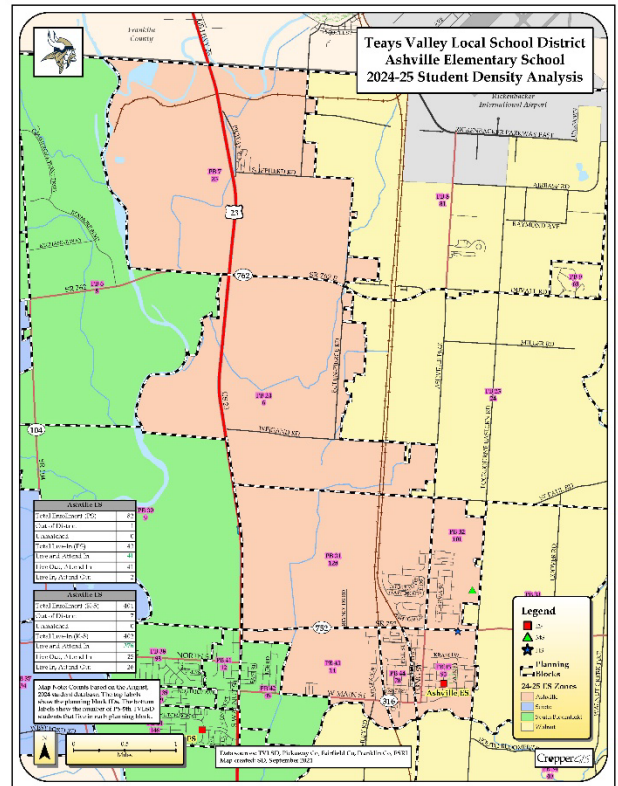
Total Live-In - number of students who live within the school’s attendance zone, who are in the same grade cohort as the school. The grade cohort can change from school to school, depending on the population served. In this case, Ashville ES enrolls K through 5th grade students. Therefore, the ‘total-live in’ statistic here indicates there are 402 K-5th grade students living within the Ashville elementary attendance boundary.

Live and Attend-In - number of students (K-5th grade) who live within the attendance zone, and also attend that school. In this example, 376 of 401 K-5th grade students who live within the Ashville ES attendance zone also attend Ashville ES.

Live-Out, Attend-In - number of K-5th grade students who live outside of the Ashville ES attendance zone but attend Ashville ES.

Live-In, Attend-Out - number of K-5th grade students who live inside the Ashville ES attendance zone yet attend a different elementary school.

The labels in the planning blocks depict both the planning block ID number (on top) and the number of PS-5th grade students that live in the planning block (bottom).





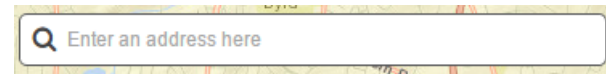
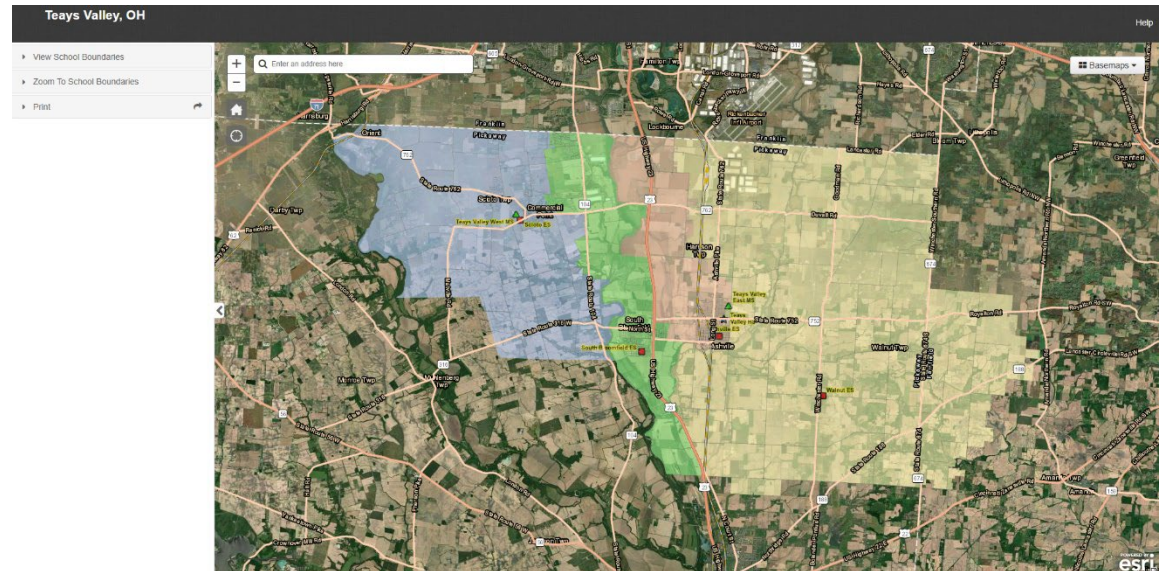
Online Mapping

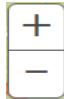

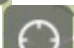
In addition to the physical printed maps, Cropper GIS has also created an interactive online map service. This map service is available at:

https://croppermap.com/Teays_valley_oh/

Below are the basic components of this online mapping service for Huber Heights City Schools:

1. **Menu Options** Use these menus to interact with the map.
 - **View School Zones:** Use this menu to choose which school zone map to view.
 - **Zoom to School Zones:** Use this menu to zoom to a school zone.
 - **Legend:** This shows the active layers that are turned on within the map.
 - **Print:** Use this menu to format and print a map with a title.
2. **Find Address:** Use this to search for an address and to determine school options.

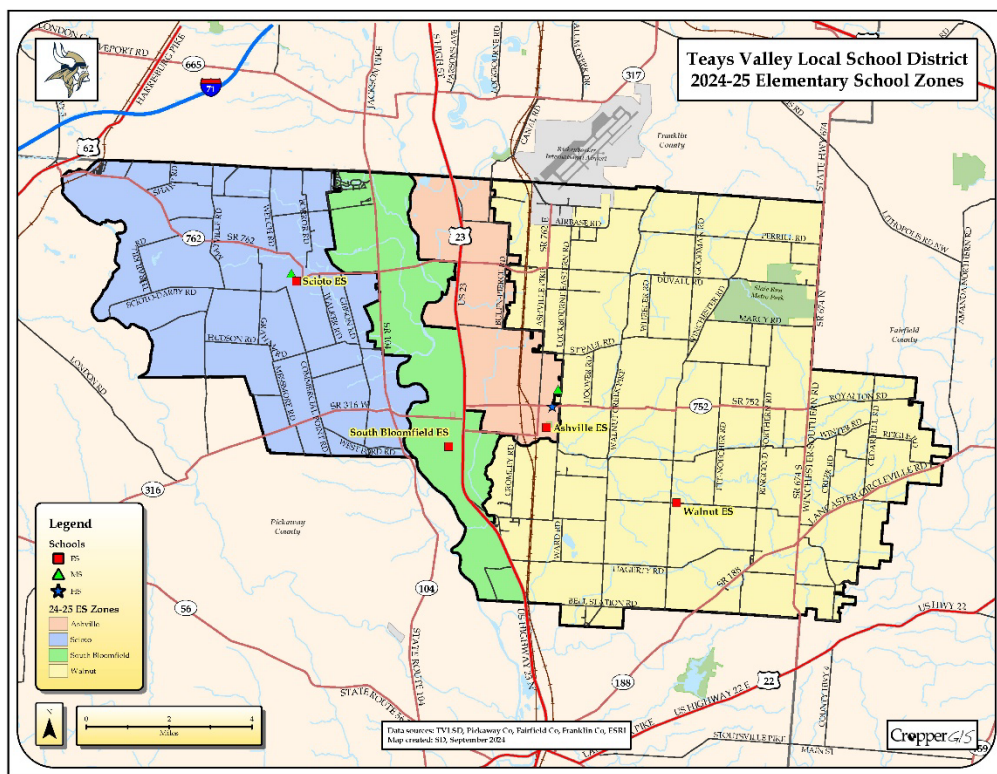


3. **Map Navigation:** This is used to zoom in & out. If your mouse has a scroll wheel this will also zoom in and out. If you click on the map screen and drag the mouse it will pan the map. 
4. **Basemaps:** Use this dropdown list to determine which basemap to have on in the background.
5. **Home Button:** Click on  this button to zoom the map out to the district's full extent.
6. **GPS Location:** Click on this  to determine your current location.



Teays Valley Local School District, OH 2024-25 Redistricting Study

Appendix A: Live-Attend Analysis



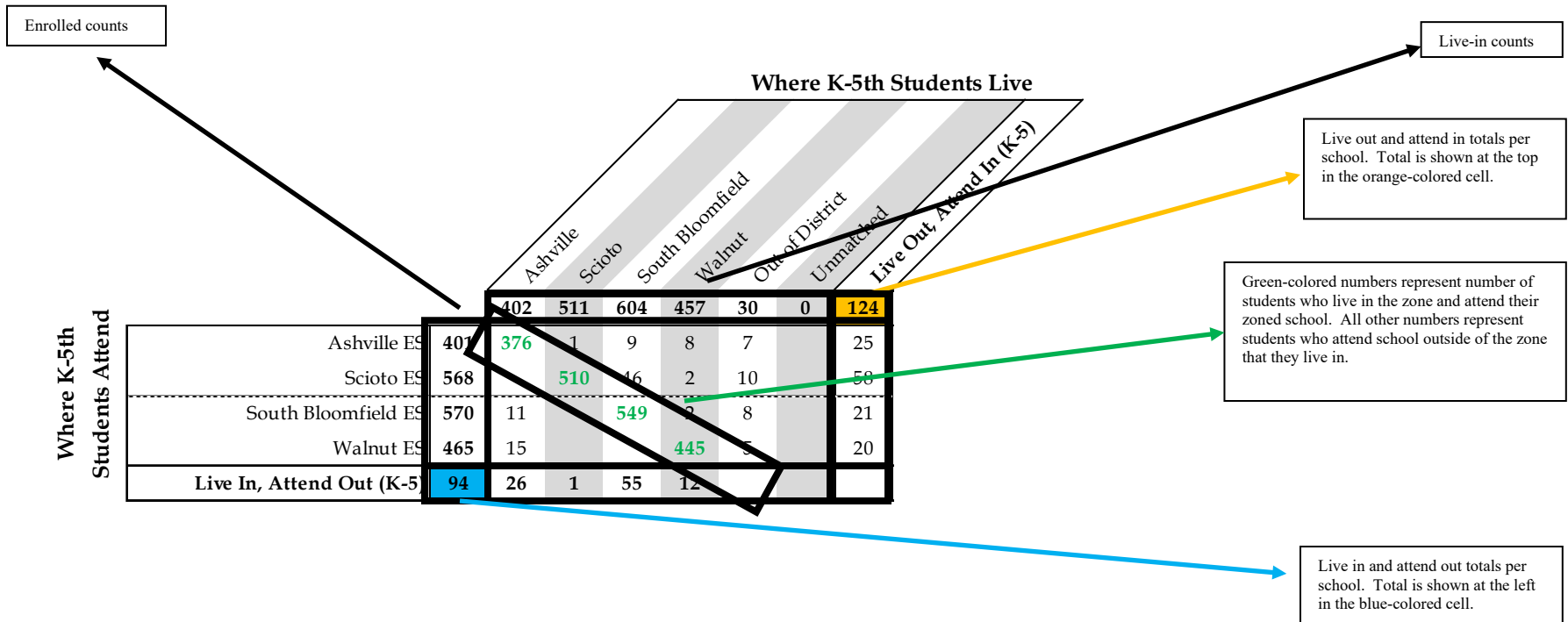


Appendix A: Live-Attend Analysis

Live Attend Matrix

The following tables display where students live and attend relative to school zones. The schools of attendance are listed on the left while the zones are listed on the top. This student data is from the August, 2024 Teays Valley Local School District student database.

The first column of numbers to the right of the schools of attendance represents the number of students enrolled at each given school. The first row of numbers below the zones represents the total number of students living inside of each given zone. The green-colored numbers represent the number of students who attend the school of the zone in which they live. All other numbers represent students who attend school outside of the zone in which they live. The bottom row represents the number of students that “Live-In and Attend-Out” by school. The blue-colored cell shows the total number of students that “Live-in and Attend-Out”. The farthest right column represents the number of students that “Live-Out and Attend-In” by school. The orange-colored cell shows the total number of students that “Live-Out and Attend-In”.





Where K-5th Students Live

		Where K-5th Students Live						
		Ashville	Scioto	South Bloomfield	Walnut	Out of District	Unmatched	Live Out, Attend In (K-5)
Where K-5th Students Attend	Ashville ES	401	376	1	9	8	7	25
	Scioto ES	568		510	46	2	10	58
	South Bloomfield ES	570	11		549	2	8	21
	Walnut ES	465	15			445	5	20
	Live In, Attend Out (K-5)	94	26	1	55	12		

Where 6th-8th Students Live

		Where 6th-8th Students Live				
		Teays Valley East	Teays Valley West	Out of District	Unmatched	Live Out, Attend In (6-8)
Where 6th-8th Students Attend	Teays Valley East MS	462	444	10	8	18
	Teays Valley West MS	584	3	568	11	2
	Teays Valley Digital Academy	13	7	6		
	Live In, Attend Out (6-8)	26	10	16		

Where 9th-12th Students Live

		Where 9th-12th Students Live			
		Teays Valley	Out of District	Unmatched	Live Out, Attend In (9-12)
Where 9th-12th Students Attend	Teays Vally HS	1,386	1,359	22	5
	Teays Valley Digital Academy	47	45	1	1
	Live In, Attend Out (9-12)	45	45		

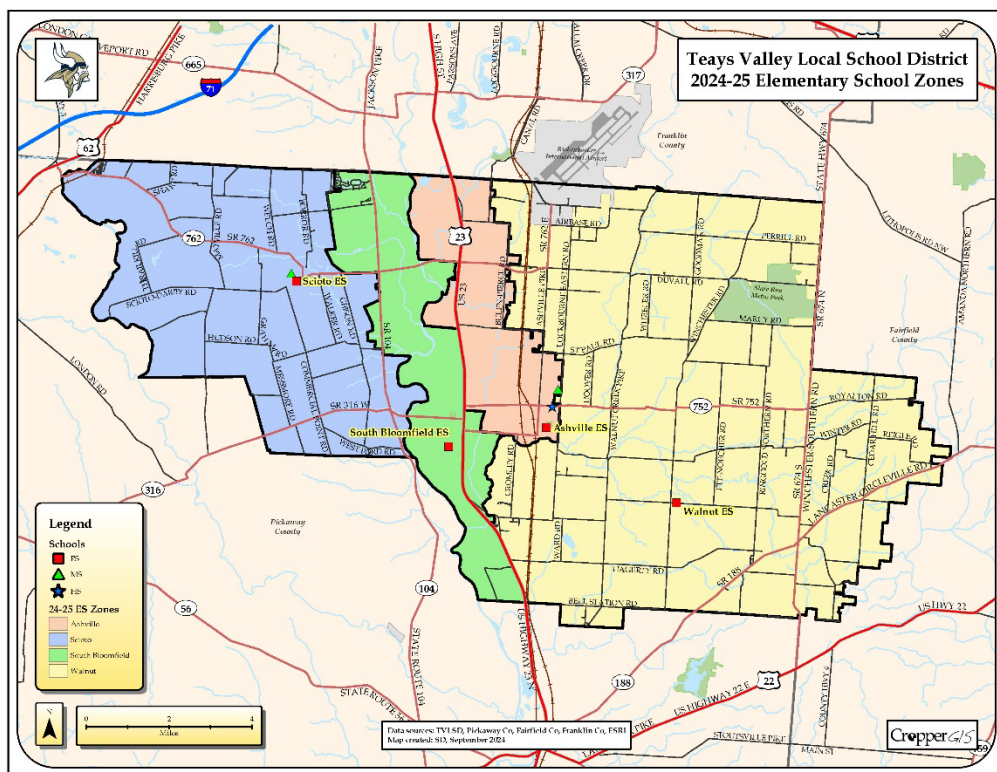


		Where PS Students Live						
		Ashville	Scioto	South Bloomfield	Walnut	Out of District	Unmatched	Live Out, Attend In (PS)
Where PS Students Attend		43	39	67	43	1	0	83
	Ashville ES	82	41	5	35	1		41
	Scioto ES	79	2	38	37	2		41
	South Bloomfield ES	26		1	25			1
	Walnut ES	6			6			0
	Live In, Attend Out (PS)	82	2	1	42	37		

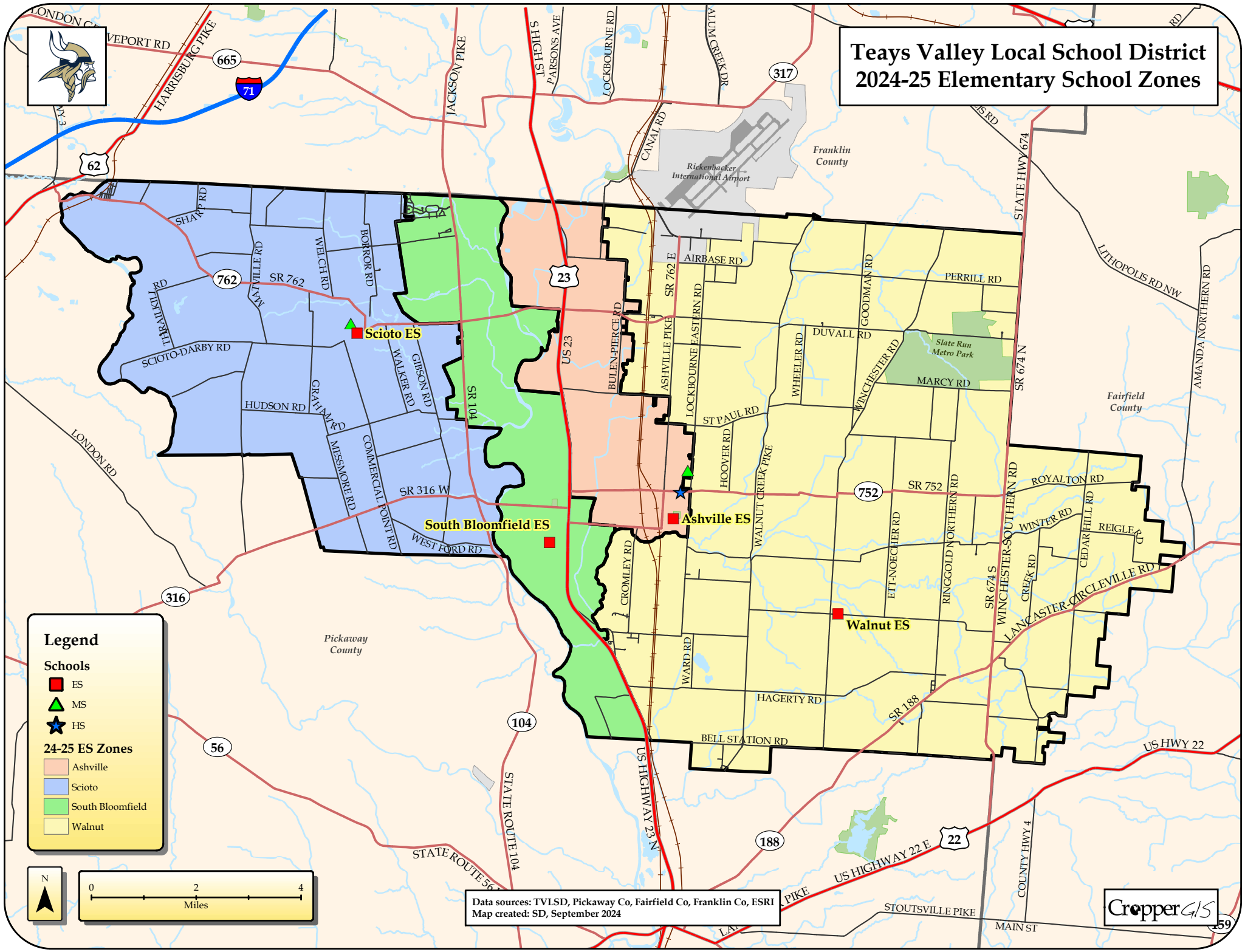


Teays Valley Local School District, OH 2024-25 Redistricting Study

Appendix B: Live-Attend Maps



Teays Valley Local School District 2024-25 Elementary School Zones



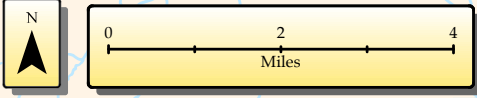
Legend

Schools

- ES
- ▲ MS
- ★ HS

24-25 ES Zones

- Ashville
- Scioto
- South Bloomfield
- Walnut



Data sources: TVLSD, Pickaway Co, Fairfield Co, Franklin Co, ESRI
Map created: SD, September 2024





Franklin
County

Teays Valley Local School District Ashville Elementary School 2024-25 Student Density Analysis

Rickenbacker
International Airport

RICKENBACKER PARKWAY EAST

AIRBASE RD

RAYMOND AVE

DUVALL RD

MILLER RD

ST PAUL RD

HOOVER RD

WALNUT CREEK PIKE

SOUTH BLOOMFIELD

COMMERCIAL POINT TURNPIKE
KENMORE BLVD
EXCHANGE WAY

SR 762

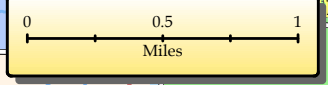
104

SR 104

Ashville ES	
Total Enrollment (PS)	82
Out of District	1
Unmatched	0
Total Live-In (PS)	43
Live and Attend In	41
Live Out, Attend In	41
Live In, Attend Out	2

Ashville ES	
Total Enrollment (K-5)	401
Out of District	7
Unmatched	0
Total Live-In (K-5)	402
Live and Attend In	376
Live Out, Attend In	25
Live In, Attend Out	26

Map Note: Counts based on the August, 2024 student database. The top labels show the planning block IDs. The bottom labels show the number of PS-5th TVLSD students that live in each planning block.



Data sources: TVLSD, Pickaway Co, Fairfield Co, Franklin Co, ESRI
Map created: SD, September 2024

Legend

- ES
- ▲ MS
- ★ HS
- Planning Blocks
- 24-25 ES Zones**
- Ashville
- Scioto
- South Bloomfield
- Walnut

PB 37
34
PB 38
39
9
9
PB 39
146
PB 40
146
PB 41
12
PB 42
45
PB 43
14
PB 44
78
PB 45
93
ES

PB 30
9

PB 24
6

PB 31
128

PB 32
101

PB 33

PB 34
40

PB 7
25

PB 8
81

PB 9
63

PB 25
24

US 23

23

762

752

SR 752

316

Ashville ES

THOREA HAWTHORNE DR
ASHTON DR
VIRGINIA ST
KRAFT DR
PARK ST

PICKWAY RD
SHEPHERD RD

SR 762 E

BULEN-PIERCE RD

WEIGAND RD

ASHVILLE PIKE

LOCKBOURNE EASTERN RD

REYNOLDS RD

THOREA HAWTHORNE DR
ASHTON DR

VIRGINIA ST

KRAFT DR

PARK ST

LONG ST

RICH ST

RAIL ST

MILLER AVE

W MAIN ST

LEE RD

EAST ST

NORTH ST

NORTHUP AVE

BUTCHISON ST

WEST FORD RD

WALNUT ST

WALNUT ST

WALNUT ST

WALNUT ST

WALNUT ST

WALNUT ST

WALNUT ST

WALNUT ST

WALNUT ST

WALNUT ST

WALNUT ST

WALNUT ST

WALNUT ST

WALNUT ST

WALNUT ST

WALNUT ST

WALNUT ST

WALNUT ST

WALNUT ST

WALNUT ST

WALNUT ST

WALNUT ST

WALNUT ST

WALNUT ST

WALNUT ST

WALNUT ST

WALNUT ST

WALNUT ST

WALNUT ST

WALNUT ST

WALNUT ST

WALNUT ST

WALNUT ST

WALNUT ST

WALNUT ST

WALNUT ST

WALNUT ST

WALNUT ST

WALNUT ST

WALNUT ST

WALNUT ST

WALNUT ST

WALNUT ST

WALNUT ST

WALNUT ST

WALNUT ST

WALNUT ST

WALNUT ST

WALNUT ST

WALNUT ST

WALNUT ST

WALNUT ST

WALNUT ST

WALNUT ST

WALNUT ST

WALNUT ST

WALNUT ST

WALNUT ST

WALNUT ST

WALNUT ST

WALNUT ST

WALNUT ST

WALNUT ST

WALNUT ST

WALNUT ST

WALNUT ST

WALNUT ST

WALNUT ST

WALNUT ST

WALNUT ST

WALNUT ST

WALNUT ST

WALNUT ST

WALNUT ST

WALNUT ST

WALNUT ST

WALNUT ST

WALNUT ST

WALNUT ST

WALNUT ST

WALNUT ST

WALNUT ST

WALNUT ST

WALNUT ST

WALNUT ST

WALNUT ST

WALNUT ST

WALNUT ST

WALNUT ST

WALNUT ST

WALNUT ST

WALNUT ST

WALNUT ST

WALNUT ST

WALNUT ST

WALNUT ST

WALNUT ST

WALNUT ST

WALNUT ST

WALNUT ST

WALNUT ST

WALNUT ST

WALNUT ST

WALNUT ST

WALNUT ST

WALNUT ST

WALNUT ST

WALNUT ST

WALNUT ST

WALNUT ST

WALNUT ST

WALNUT ST

WALNUT ST

WALNUT ST

WALNUT ST

WALNUT ST

WALNUT ST

WALNUT ST

WALNUT ST

WALNUT ST

WALNUT ST

WALNUT ST

WALNUT ST

WALNUT ST

WALNUT ST

WALNUT ST

WALNUT ST

WALNUT ST

WALNUT ST

WALNUT ST

WALNUT ST

WALNUT ST

WALNUT ST

WALNUT ST

WALNUT ST

WALNUT ST

WALNUT ST

WALNUT ST

WALNUT ST

WALNUT ST

WALNUT ST

WALNUT ST

WALNUT ST

WALNUT ST

WALNUT ST

WALNUT ST

WALNUT ST

WALNUT ST

WALNUT ST

WALNUT ST

WALNUT ST

WALNUT ST

WALNUT ST

WALNUT ST

WALNUT ST

WALNUT ST

WALNUT ST

WALNUT ST

WALNUT ST

WALNUT ST

WALNUT ST

WALNUT ST

WALNUT ST

WALNUT ST

WALNUT ST

WALNUT ST

WALNUT ST

WALNUT ST

WALNUT ST

WALNUT ST

WALNUT ST

WALNUT ST

WALNUT ST

WALNUT ST

WALNUT ST

WALNUT ST

WALNUT ST

WALNUT ST

WALNUT ST

WALNUT ST

WALNUT ST

WALNUT ST

WALNUT ST

WALNUT ST

WALNUT ST

WALNUT ST

WALNUT ST

WALNUT ST

WALNUT ST

WALNUT ST

WALNUT ST

WALNUT ST

WALNUT ST

WALNUT ST

WALNUT ST

WALNUT ST

W



Teays Valley Local School District Scioto Elementary School 2024-25 Student Density Analysis

Map Note: Counts based on the August, 2024 student database. The top labels show the planning block IDs. The bottom labels show the number of PS-5th TVLSD students that live in each planning block.

Legend

Schools

- ES (Elementary School) - Red square
- MS (Middle School) - Green triangle
- HS (High School) - Blue star

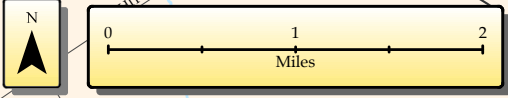
Planning Blocks

24-25 ES Zones

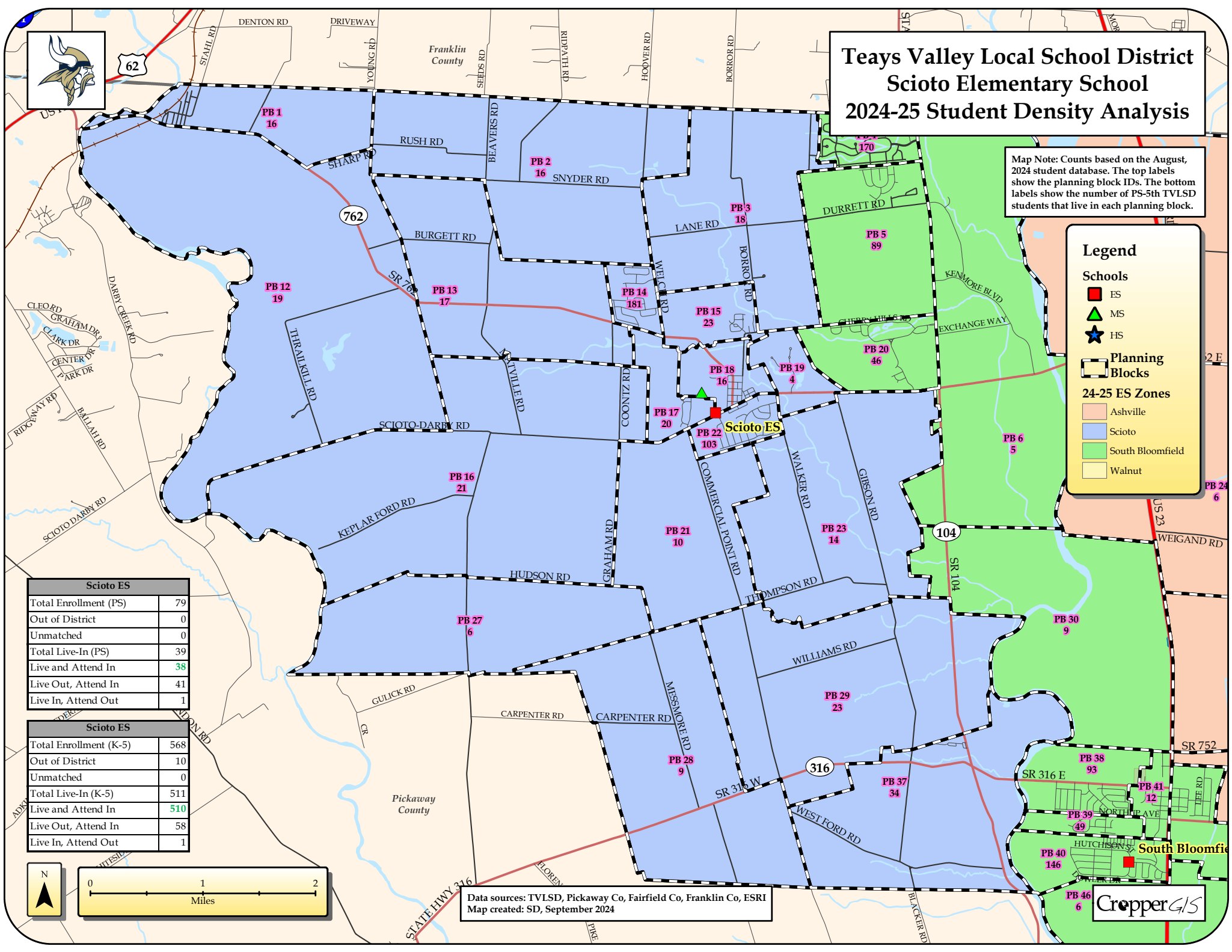
- Ashville - Light orange
- Scioto - Light blue
- South Bloomfield - Light green
- Walnut - Light yellow

Scioto ES	
Total Enrollment (PS)	79
Out of District	0
Unmatched	0
Total Live-In (PS)	39
Live and Attend In	38
Live Out, Attend In	41
Live In, Attend Out	1

Scioto ES	
Total Enrollment (K-5)	568
Out of District	10
Unmatched	0
Total Live-In (K-5)	511
Live and Attend In	510
Live Out, Attend In	58
Live In, Attend Out	1

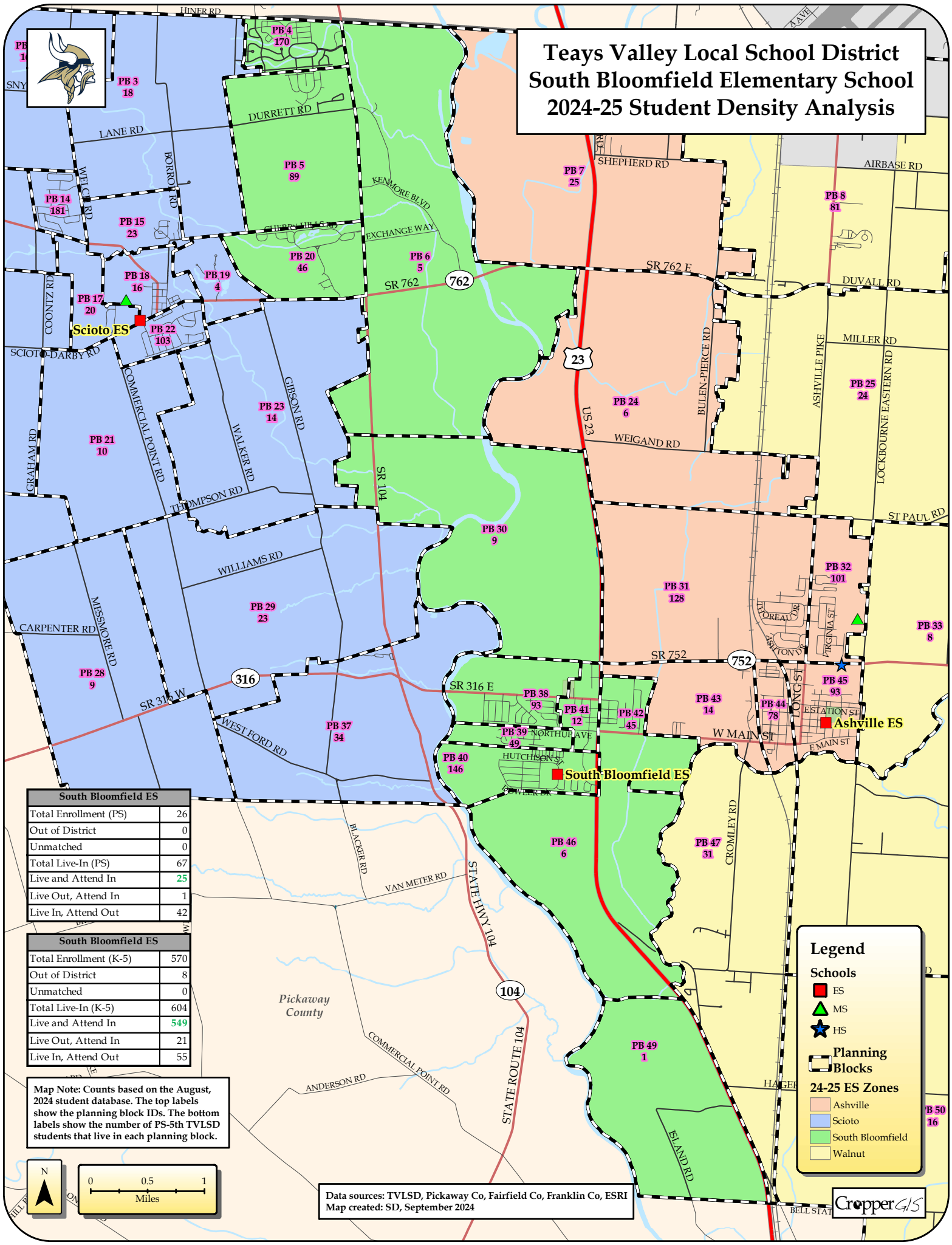


Data sources: TVLSD, Pickaway Co, Fairfield Co, Franklin Co, ESRI
Map created: SD, September 2024





Teays Valley Local School District South Bloomfield Elementary School 2024-25 Student Density Analysis



South Bloomfield ES	
Total Enrollment (PS)	26
Out of District	0
Unmatched	0
Total Live-In (PS)	67
Live and Attend In	25
Live Out, Attend In	1
Live In, Attend Out	42

South Bloomfield ES	
Total Enrollment (K-5)	570
Out of District	8
Unmatched	0
Total Live-In (K-5)	604
Live and Attend In	549
Live Out, Attend In	21
Live In, Attend Out	55

Map Note: Counts based on the August, 2024 student database. The top labels show the planning block IDs. The bottom labels show the number of PS-5th TVLSD students that live in each planning block.

Legend

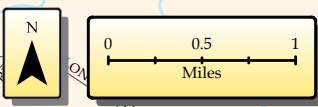
Schools

- ES
- ▲ MS
- ★ HS

Planning Blocks

24-25 ES Zones

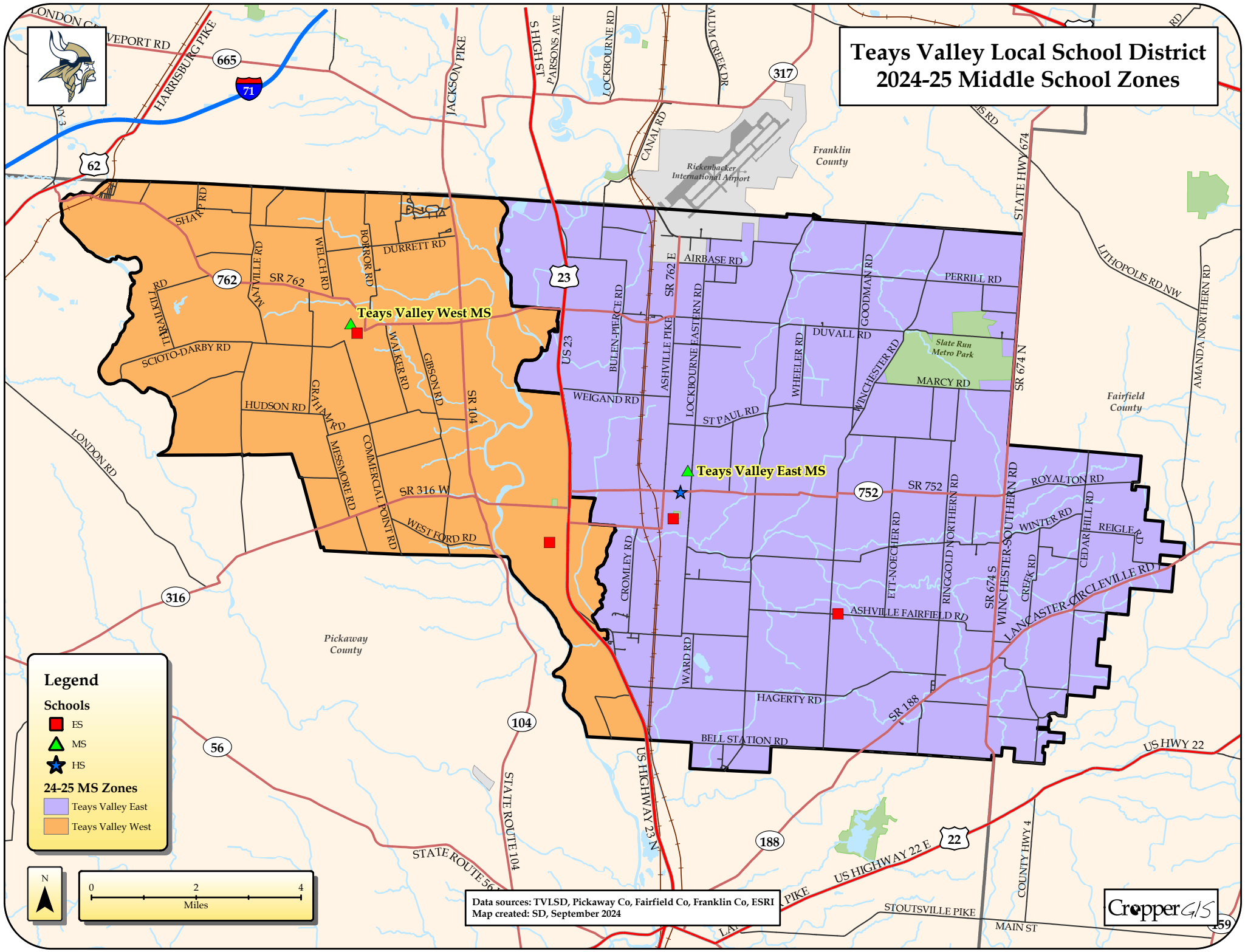
- Ashville
- Scioto
- South Bloomfield
- Walnut



Data sources: TVLSD, Pickaway Co, Fairfield Co, Franklin Co, ESRI
Map created: SD, September 2024



Teays Valley Local School District 2024-25 Middle School Zones



Teays Valley West MS

Teays Valley East MS

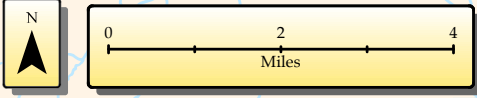
Legend

Schools

- ES
- ▲ MS
- ★ HS

24-25 MS Zones

- Teays Valley East
- Teays Valley West



Data sources: TVLSD, Pickaway Co, Fairfield Co, Franklin Co, ESRI
Map created: SD, September 2024



Teays Valley Local School District Teays Valley East Middle School 2024-25 Student Density Analysis

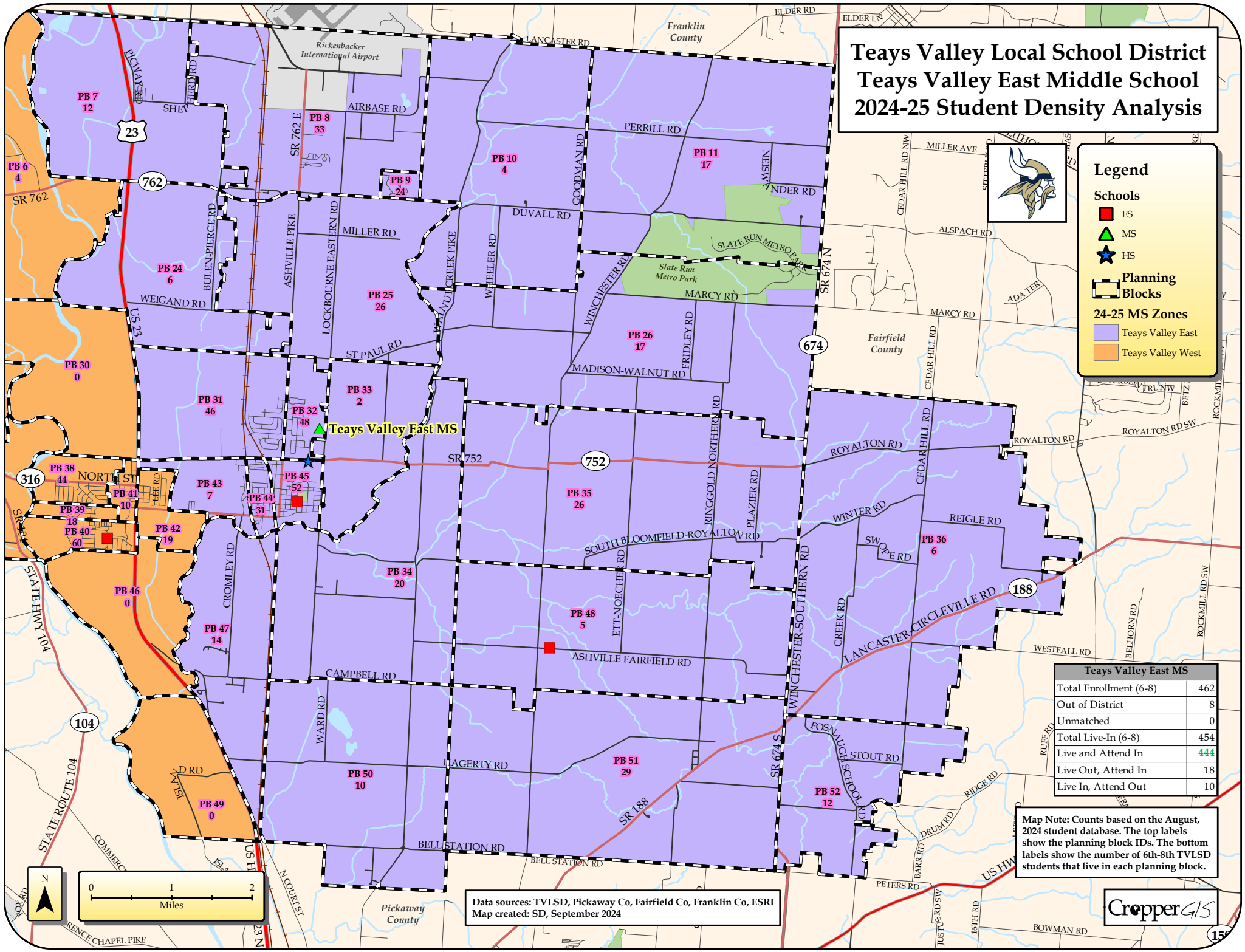


Legend

- ES
- ▲ MS
- ★ HS
- Planning Blocks

24-25 MS Zones

- Teays Valley East
- Teays Valley West

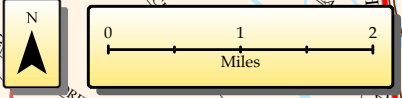


▲ Teays Valley East MS

Teays Valley East MS	
Total Enrollment (6-8)	462
Out of District	8
Unmatched	0
Total Live-In (6-8)	454
Live and Attend In	444
Live Out, Attend In	18
Live In, Attend Out	10

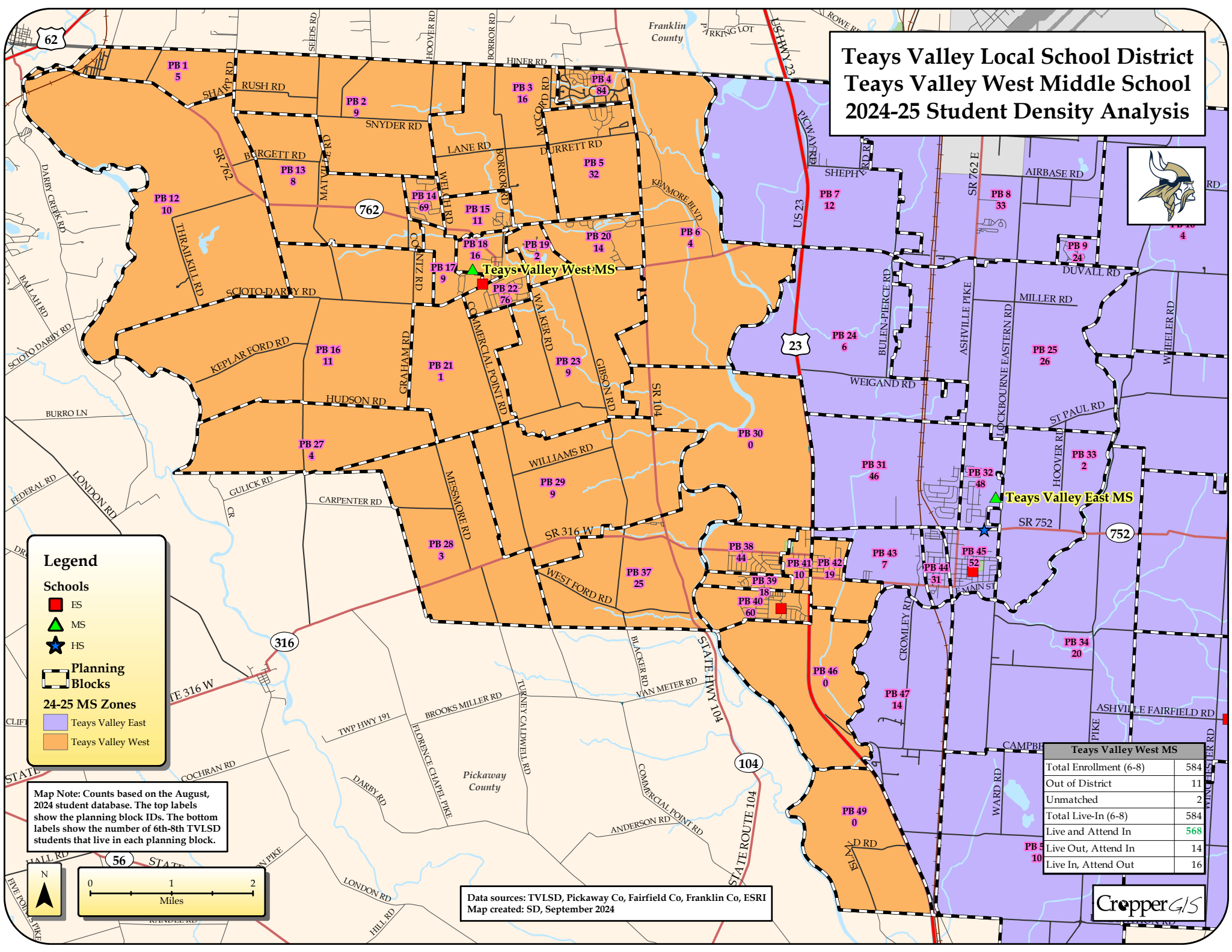
Map Note: Counts based on the August, 2024 student database. The top labels show the planning block IDs. The bottom labels show the number of 6th-8th TVLSD students that live in each planning block.

Data sources: TVLSD, Pickaway Co, Fairfield Co, Franklin Co, ESRI
Map created: SD, September 2024



CropperGIS

Teays Valley Local School District Teays Valley West Middle School 2024-25 Student Density Analysis



Legend

Schools

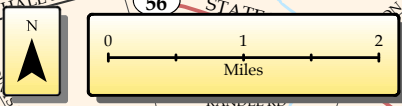
- ES (Red Square)
- MS (Green Triangle)
- HS (Blue Star)

Planning Blocks

24-25 MS Zones

- Teays Valley East (Purple)
- Teays Valley West (Orange)

Map Note: Counts based on the August, 2024 student database. The top labels show the planning block IDs. The bottom labels show the number of 6th-8th TVLSD students that live in each planning block.



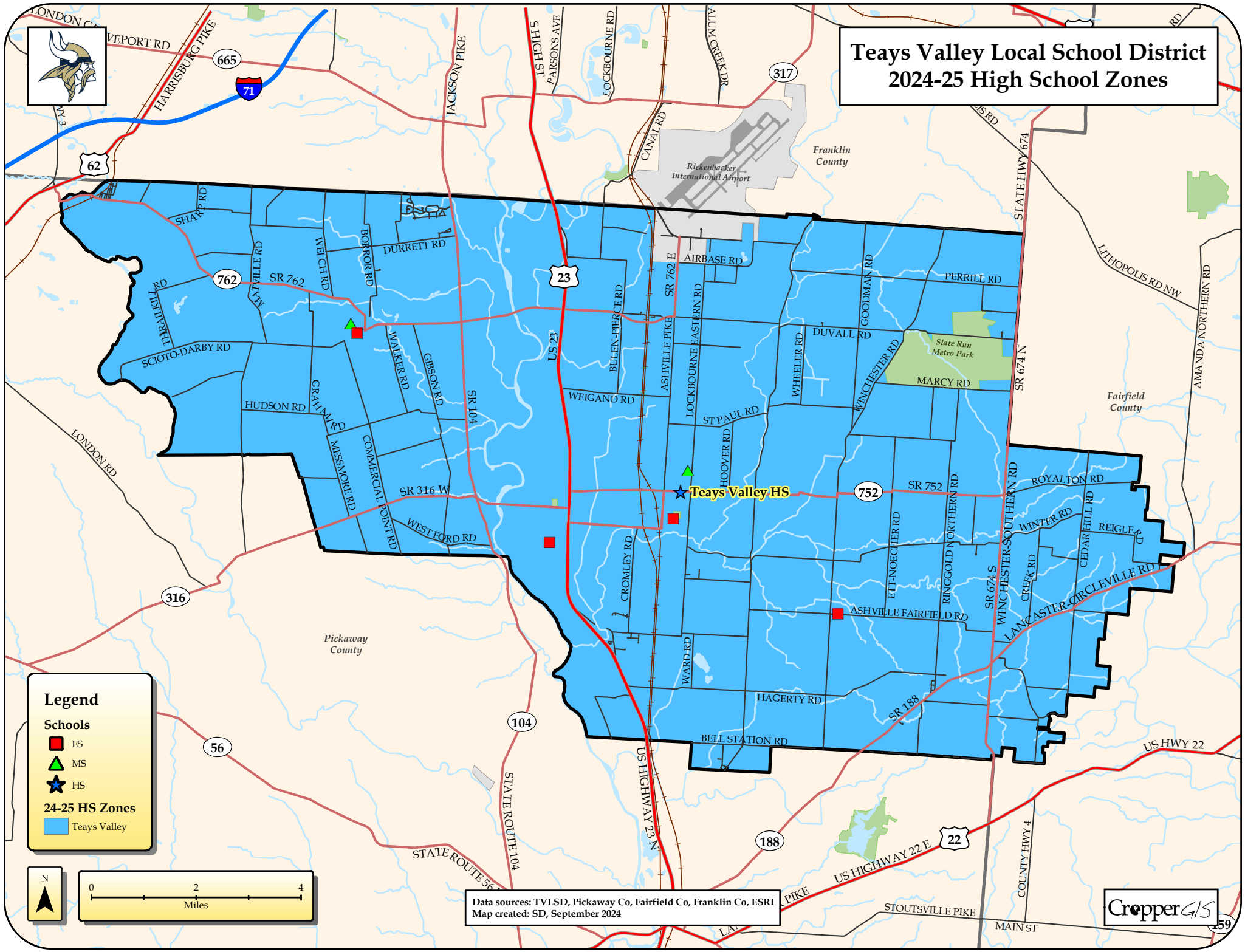
Data sources: TVLSD, Pickaway Co, Fairfield Co, Franklin Co, ESRI
Map created: SD, September 2024

Teays Valley West MS	
Total Enrollment (6-8)	584
Out of District	11
Unmatched	2
Total Live-In (6-8)	584
Live and Attend In	568
Live Out, Attend In	14
Live In, Attend Out	16





Teays Valley Local School District 2024-25 High School Zones



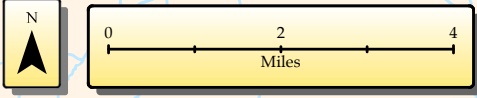
Legend

Schools

- ES (Red square)
- MS (Green triangle)
- HS (Blue star)

24-25 HS Zones

- Teays Valley (Light blue area)



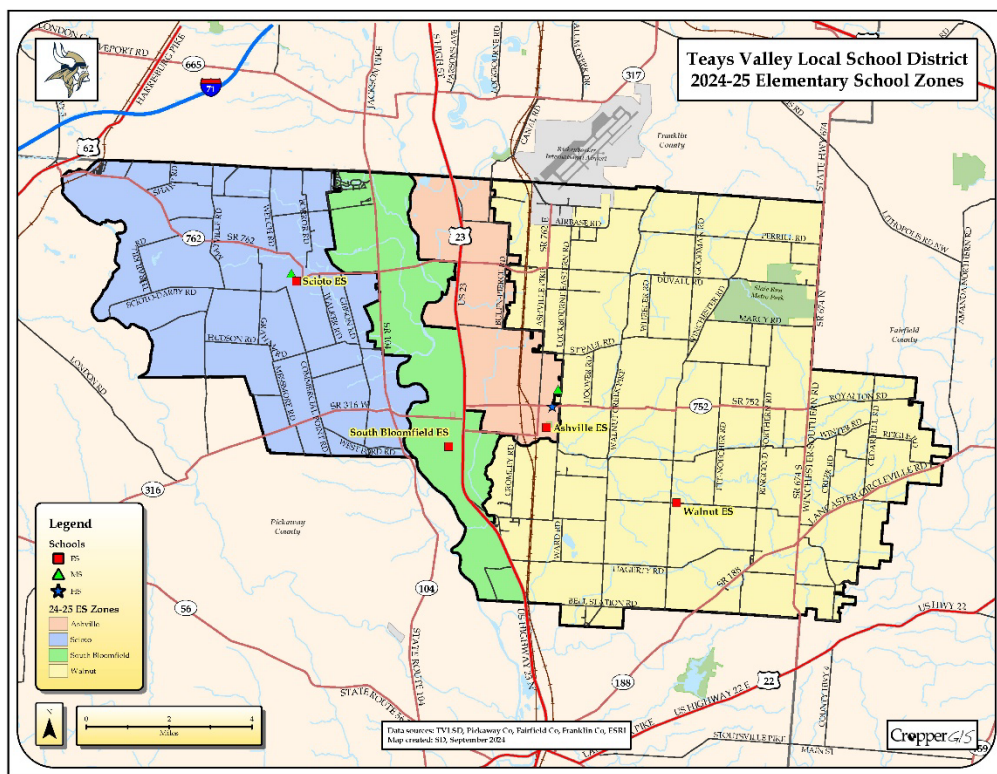
Data sources: TVLSD, Pickaway Co, Fairfield Co, Franklin Co, ESRI
Map created: SD, September 2024





Teays Valley Local School District, OH 2024 Redistricting Study

Appendix C: Enrollment and Utilization Tables





Appendix C: 2024-25 Capacity, Official Enrollment and Building Utilizations

The following document contains a series of tables that depict statistics for current schools and boundaries that are being evaluated. This information will help inform all stakeholders on how schools could be potentially impacted as a result of potential redistricting adjustments. The current student enrollment numbers were derived from the district's August, 2024 student database.

Glossary of Terms

Capacity -The number of students that an individual school has the physical capacity to enroll and can be reasonably accommodated in a facility.

Utilization - Utilization is the total enrollment divided by the capacity, described as a percentage.

Live-in students - Students residing inside of a school attendance boundary, regardless of where that student attends school.

Live and Attend - Students who attend the assigned schools for the zones where they live.

Live Out Attend In - Students that live outside of their attending school's boundary but reside within the Teays Valley Local School District boundary.

Out of District students - Students that live outside of the Teays Valley Local School District boundary.

Unmatched students - Students whose address was not able to be located by the GIS.



Enrollment and Utilization Tables

The following tables show current utilization by percentage based on current enrollment and 2023-24 building capacity. Student counts are based on the August, 2024 Teays Valley Local School District student database.

Cells are color coded based on deviation from the standard percentage in each field. The color coding is intended to help the reader of the table quickly identify outliers, both low and high, as compared to the district average. The color coding does not necessarily correlate to what the district considers to be an ideal or problematic scenario. Percentages are rounded.

Within 10%
Between 10-15%
Over/Under 15%

2024-25 ES Enrollment and Utilization											
Elementary School	Capacity	PS*	KG	1	2	3	4	5	Current Enrollment	Current Utilization	Trend
Ashville ES	550	41	71	64	72	57	71	66	442	80%	▬
Scioto ES	740	40	92	88	85	103	97	103	608	82%	▾
South Bloomfield ES	550	13	88	91	104	107	79	101	583	106%	▬
Walnut ES	550	3	72	72	84	82	67	88	468	85%	▾
Total	2,390	97	323	315	345	349	314	358	2,101	88%	▾

*Half of actual enrollment of PS students is displayed in this table, due to AM/PM classes.

2024-25 MS Enrollment and Utilization							
Middle School	Capacity	6	7	8	Current Enrollment	Current Utilization	Trend
Teays Valley East MS	590	173	158	131	462	78%	▴
Teays Valley West MS	590	202	204	178	584	99%	▴
Total	1,180	375	362	309	1,046	89%	▴

2024-25 HS Enrollment and Utilization								
High School	Capacity	9	10	11	12	Current Enrollment	Current Utilization	Trend
Teays Valley High School	1,600	354	389	318	325	1,386	87%	▴
Total	1,600	354	389	318	325	1,386	87%	▴



Demographic Statistics

The following tables display race and socioeconomic statistics by school based on the August, 2024 student database.

Elementary School	2024-25 ES Enrolled Ethnicity Percentage								Lunch Percentage		
	American Indian or	Asian	Black or African	Hispanic or Latino	Native Hawaiian	White	Multiple Categories	Unknown	Free	Reduced	None
Ashville ES	0%	1%	2%	1%	0%	90%	5%	0%	28%	4%	68%
Scioto ES	0%	1%	2%	2%	0%	88%	6%	0%	22%	3%	74%
South Bloomfield ES	0%	1%	7%	5%	0%	79%	7%	0%	31%	6%	63%
Walnut ES	0%	0%	2%	1%	0%	93%	4%	0%	31%	4%	65%
Total	0%	1%	4%	2%	0%	87%	6%	0%	28%	4%	68%

Middle School	2024-25 MS Enrolled Ethnicity Percentage								Lunch Percentage		
	American Indian or	Asian	Black or African	Hispanic or Latino	Native Hawaiian	White	Multiple Categories	Unknown	Free	Reduced	None
Teays Valley East MS	0%	1%	1%	1%	0%	94%	3%	0%	35%	6%	59%
Teays Valley West MS	0%	2%	3%	3%	0%	87%	5%	0%	28%	4%	68%
Total	0%	1%	2%	2%	0%	90%	4%	0%	31%	5%	64%

High School	2024-25 HS Enrolled Ethnicity Percentage								Lunch Percentage		
	American Indian or	Asian	Black or African	Hispanic or Latino	Native Hawaiian	White	Multiple Categories	Unknown	Free	Reduced	None
Teays Valley High School	0%	1%	2%	2%	0%	90%	4%	0%	28%	6%	66%
Total	0%	1%	2%	2%	0%	90%	4%	0%	28%	6%	66%



Cropper GIS Consulting, LLC

35 South Liberty Street, P.O. Box 1308

Delaware, OH 43015

Tel: 614.451.1242

Email: info@croppergis.com

Web: www.croppergis.com