

Facilities Services

# Valley Elementary / Brunswick Elementary Redistricting DRAFT Option

Board of Education  
October 9, 2024

**PRESENTED BY:** Beth Pasierb, Supervisor of Facilities Planning  
Matthew Cropper, President - Cropper GIS



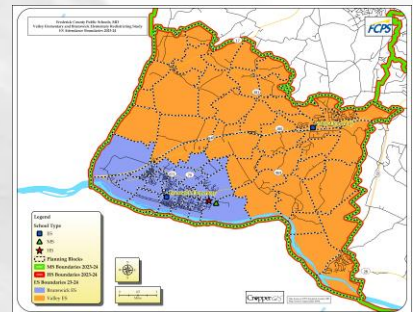
## 2023-24 Enrollment and Demographics

School	State Rated Capacity (SRC)	2023-24 Enrollment									
		PK	K	1	2	3	4	5	Total Enrollment	Equated Enrollment	Utilization
Brunswick Elementary School	725	38	128	119	102	128	130	127	772	772	106%
Valley Elementary School	499	18	81	80	84	88	78	75	504	504	101%
<b>Total</b>	<b>1201</b>	<b>56</b>	<b>209</b>	<b>199</b>	<b>186</b>	<b>216</b>	<b>208</b>	<b>202</b>	<b>1276</b>	<b>1276</b>	<b>104%</b>

School	Students Eligible for Free and Reduced Meals		Percentage of Multi-Lingual Learners		Percentage of Students with an IEP*		Walkable Area Live and Attend-In Students
	Yes %	No %	Yes %	No %	Yes %	No %	
Brunswick Elementary School	30%	70%	3%	97%	15%	85%	236
Valley Elementary School	30%	70%	8%	92%	12%	88%	36
<b>Total</b>	<b>30%</b>	<b>70%</b>	<b>5%</b>	<b>95%</b>	<b>14%</b>	<b>86%</b>	<b>272</b>

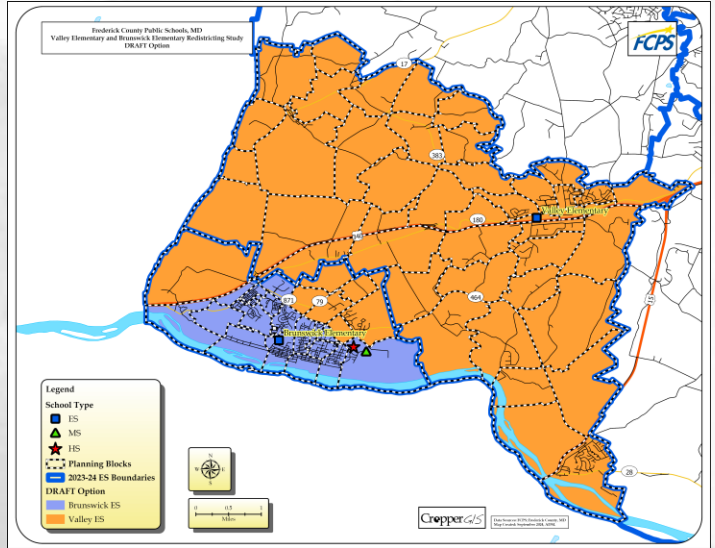
\* IEP - Individualized Education Program



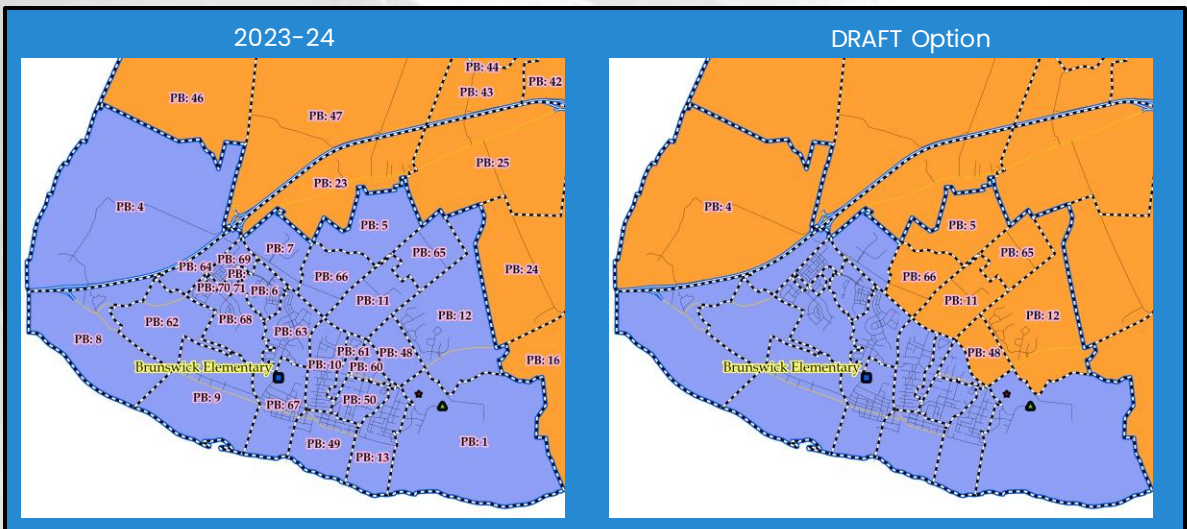
# DRAFT Option Map

### Assumptions

1. Any student living within a school boundary and attending that school will attend the school for their grade.
2. Any student living outside of a school boundary but attending under a special permission transfer will attend their approved school
3. The grade succession rates used in the most recent projections are used in these projections.
4. Enrollment projections for the Draft Option assume that the number of Pre-K seats available are the same as in 2023.



# Planning Block Comparison



# DRAFT Option Statistics

School	State Rated Capacity (SRC)	DRAFT Option with 2023-24 Student Database**		2025-26 Projections with Draft Options**		2029-30 Projections with Draft Options***	
		Equated Enrollment	Utilization	Equated Enrollment	Utilization	Equated Enrollment	Utilization
Brunswick Elementary School	725	640	88%	642	89%	724	100%
Valley Elementary School	745*	636	85%	725	97%	761	102%
<b>Total</b>	<b>1470</b>	<b>1276</b>	<b>87%</b>	<b>1367</b>	<b>93%</b>	<b>1486</b>	<b>101%</b>

\* 745 is the capacity of the replacement Valley ES Building  
 \*\* Enrollment in September 2023 if draft option attendance boundaries were in effect  
 \*\*\* Projections calculated by FCPS Facilities Planning Department

School	State Rated Capacity (SRC)	DRAFT Option with 2023-24 Student Database								
		PK	K	1	2	3	4	5	Equated Enrollment	Utilization
Brunswick Elementary School	725	38	105	104	84	109	102	98	640	88%
Valley Elementary School	745*	18	104	95	102	107	106	104	636	85%
<b>Total</b>	<b>1470</b>	<b>56</b>	<b>209</b>	<b>199</b>	<b>186</b>	<b>216</b>	<b>208</b>	<b>202</b>	<b>1276</b>	<b>87%</b>

\* 745 is the capacity of the replacement Valley ES Building

Student Impact Estimates		
Option	Total K-5th Live and Attend-In Students Impacted	Percent K-5th Live and Attend-In Students Impacted
DRAFT Option	132	11.1%

School	DRAFT Option Demographics based on the 2023-24 Student Database							
	Students Eligible for Free and Reduced Meals		Percentage of Multi-Lingual Learners		Percentage of Students with an IEP*		Walkable Area	Live and Attend-In Students
	Yes %	No %	Yes %	No %	Yes %	No %		
Brunswick Elementary School	30%	70%	3%	97%	13%	87%	236	236
Valley Elementary School	30%	70%	8%	92%	13%	87%	36	36
<b>Total</b>	<b>30%</b>	<b>70%</b>	<b>9%</b>	<b>99%</b>	<b>14%</b>	<b>96%</b>	<b>272</b>	<b>272</b>

\* IEP - Individualized Education Program

5

# Redistricting Study Criteria Revisited



5 year projections show that utilization for both schools will be within 2%.



No additional bus routes needed as a result of the areas moved to Valley.



Neither school loses any student within its walkable area.



Both new areas are contiguous.



Any demographic characteristic category that does change, only changes by 1%.



Both schools still feed into only Brunswick MS and Brunswick HS.



6

## Public Participation and Engagement

---

- In-Person, virtual, and recorded meetings
- Community Survey Available October 9 to November 3
- Redistricting website (DRAFT option maps, data, and recorded presentations)
- Printed maps will be available at both elementary schools
- General feedback form
- PTA meetings



7

## Next Steps

---

- October 17, 2024 - Community Presentations of DRAFT Option
  - Virtual Meeting (12:00 Noon)
  - In-person meeting at Brunswick Elementary School (6:30 pm)
- Board Work Session on December 11, 2024
- Public Hearing on January 22, 2025
- Approval of a plan on February 12, 2025
- Implementation for the 2025/2026 school year



8



# Questions and Discussion

