

Presentation of Valley Elementary / Brunswick Elementary Redistricting DRAFT Option

October 17, 2024

Presenters

Beth Pasierb,
Supervisor of Facilities Planning

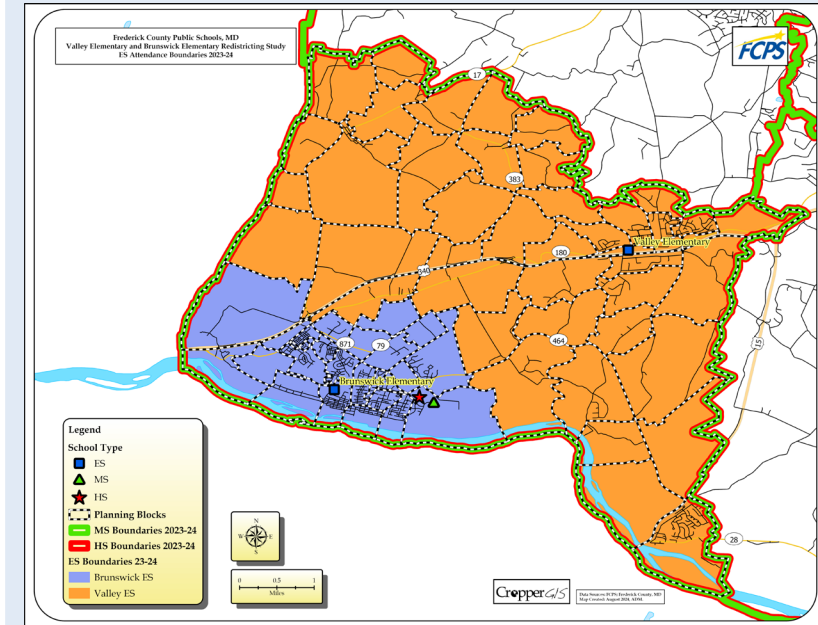
Matthew Cropper,
President - Cropper GIS

2023-24 Enrollment and Demographics

School	State Rated Capacity (SRC)	2023-24 Enrollment									Equated Enrollment	Utilization
		PK	K	1	2	3	4	5	Total Enrollment			
Brunswick Elementary School	725	38	128	119	102	128	130	127	772	772	106%	
Valley Elementary School	499	18	81	80	84	88	78	75	504	504	101%	
Total	1201	56	209	199	186	216	208	202	1276	1276	104%	

School	Students Eligible for Free and Reduced Meals		Percentage of Multi-Lingual Learners		Percentage of Students with an IEP*		Walkable Area Live and Attend-In Students
	Yes %	No %	Yes %	No %	Yes %	No %	
Brunswick Elementary School	30%	70%	3%	97%	15%	85%	236
Valley Elementary School	30%	70%	8%	92%	12%	88%	36
Total	30%	70%	5%	95%	14%	86%	272

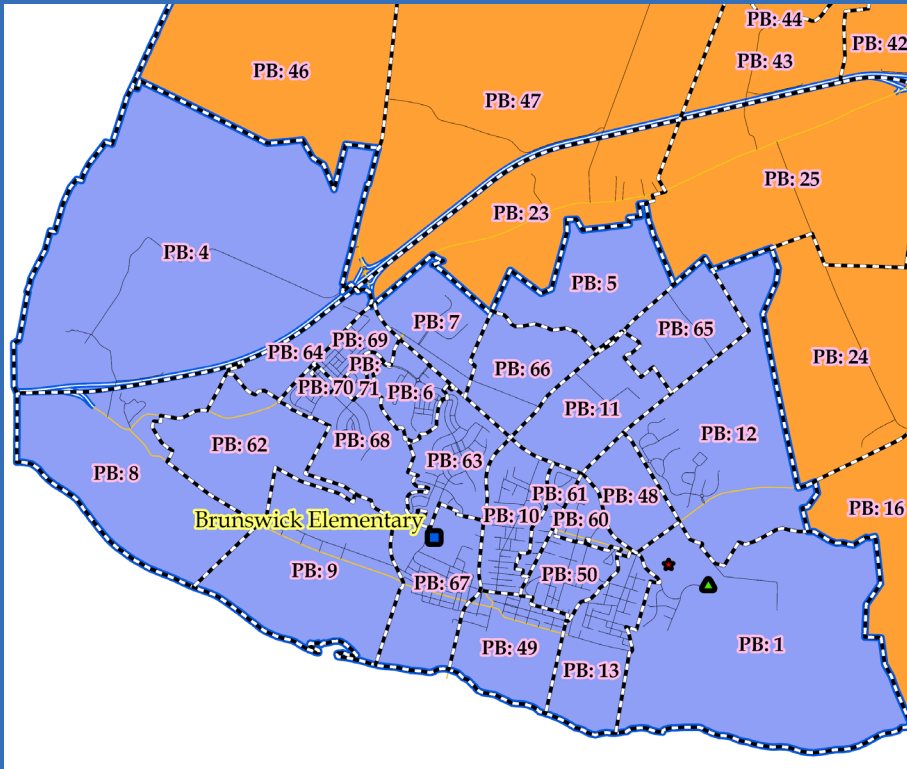
* IEP - Individualized Education Program



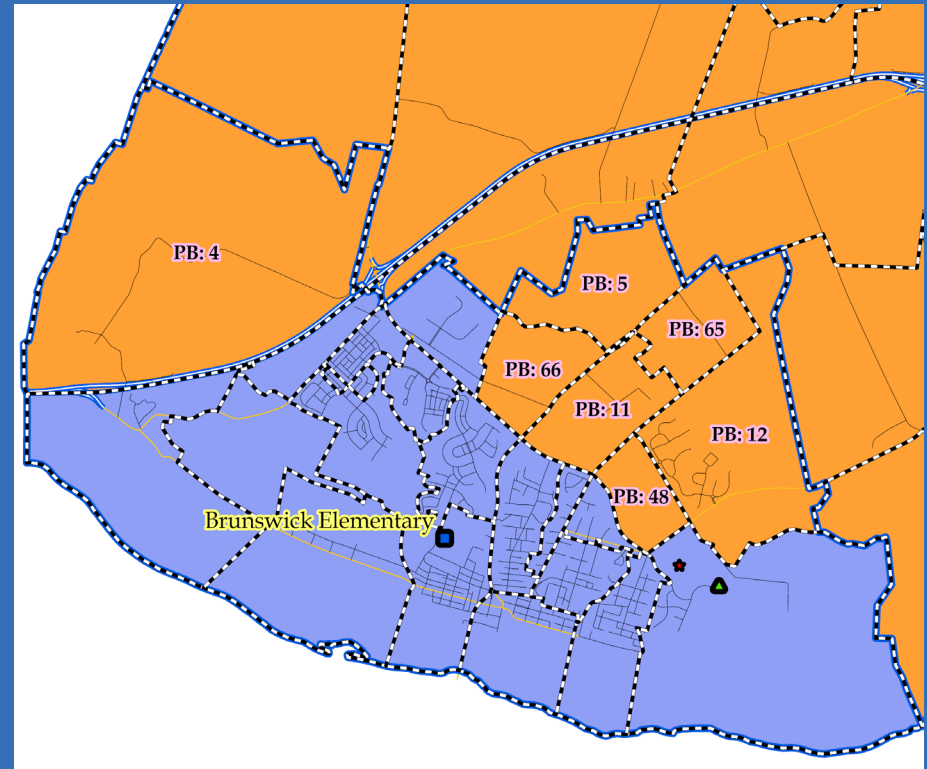
Planning Blocks

As part of the redistricting study, a series of planning blocks have been developed for the Valley and Brunswick Elementary School attendance areas.

2023-24



DRAFT Option



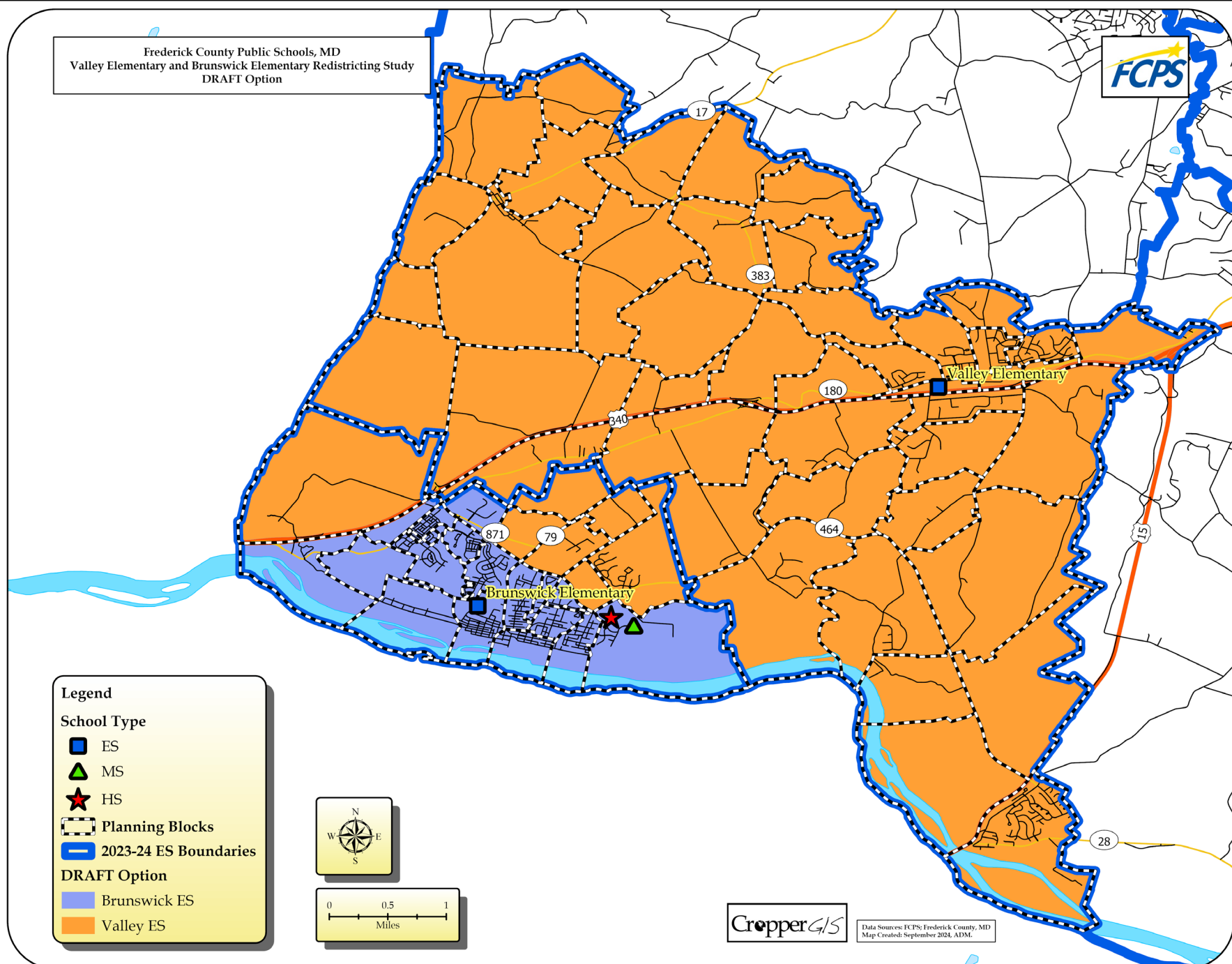
DRAFT Option Map

Assumptions

When estimating enrollment for this option, a series of assumptions were made. These assumptions help to ensure that special programs are not compromised by any redistricting adjustment, and that actual enrollments will materialize as close to the estimates as possible. The following assumptions were made:

1. Any student living within a school boundary and attending that school will attend the school for their grade.
2. Any student living outside of a school boundary but attending under a special permission transfer will attend their approved school
3. The grade succession rates used in the most recent projections are used in these projections.
4. Enrollment projections for the Draft Option assume that the number of Pre-K seats available are the same as in 2023.

Frederick County Public Schools, MD
Valley Elementary and Brunswick Elementary Redistricting Study
DRAFT Option



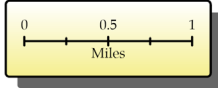
Legend

School Type

- ES (Blue square)
- MS (Green triangle)
- HS (Red star)
- Planning Blocks (Dashed line)
- 2023-24 ES Boundaries (Blue outline)

DRAFT Option

- Brunswick ES (Blue fill)
- Valley ES (Orange fill)



Data Sources: FCPS, Frederick County, MD
Map Created: September 2024, ADM

DRAFT Option Statistics

School	State Rated Capacity (SRC)	DRAFT Option with 2023-24 Student Database**		2025-26 Projections with Draft Options***		2029-30 Projections with Draft Options***	
		Equated Enrollment	Utilization	Equated Enrollment	Utilization	Equated Enrollment	Utilization
Brunswick Elementary School	725	640	88%	642	89%	724	100%
Valley Elementary School	745*	636	85%	725	97%	761	102%
Total	1470	1276	87%	1367	93%	1486	101%

* 745 is the capacity of the replacement Valley ES Building

** Enrollment in September 2023 if draft option attendance boundaries were in effect

*** Projections calculated by FCPS Facilities Planning Department

School	State Rated Capacity (SRC)	DRAFT Option with 2023-24 Student Database								
		PK	K	1	2	3	4	5	Equated Enrollment	Utilization
Brunswick Elementary School	725	38	105	104	84	109	102	98	640	88%
Valley Elementary School	745*	18	104	95	102	107	106	104	636	85%
Total	1470	56	209	199	186	216	208	202	1276	87%

* 745 is the capacity of the replacement Valley ES Building

Student Impact Estimates		
Option	Total K-5th Live and Attend-In Students Impacted	Percent K-5th Live and Attend-In Students Impacted
DRAFT Option	132	11.1%

School	DRAFT Option Demographics based on the 2023-24 Student Database						
	Students Eligible for Free and Reduced Meals		Percentage of Multi-Lingual Learners		Percentage of Students with an IEP*		Walkable Area Live and Attend-In Students
	Yes %	No %	Yes %	No %	Yes %	No %	
Brunswick Elementary School	30%	70%	3%	97%	15%	85%	236
Valley Elementary School	30%	70%	8%	92%	13%	87%	36
Total	30%	70%	5%	95%	14%	86%	272

* IEP - Individualized Education Program

Redistricting Study Criteria Revisited



5 year projections show that utilization for both schools will be within 2%.



No additional transportation costs as a result of the areas moved to Valley



Neither school loses any student within their walkable area.



Both new areas are contiguous.



Any demographic characteristic category that does change, only changes by 1%.



Both schools still feed into only Brunswick MS and Brunswick HS

Public Participation

- Public will have numerous opportunities to learn about the DRAFT Option and provide input:
 - Survey will be developed for public to participate in and will run from October 9th to November 3rd
 - The redistricting website will continue to be a resource for the public to view the DRAFT Option maps, data, and recorded presentations.
 - Printed maps will be available at both Valley and Brunswick Elementary Schools
 - Additional comments will continue to be welcomed in the General Feedback Form
 - FCPS staff will reach out to PTA to see if they want to have a presentation at their meetings

Public Participation

- Please go to www.vesbesredistrict.com to access the Community Engagement Session 2 Survey
- A copy of the PowerPoint Presentation and links to the DRAFT Option map (PDF and Online Interactive map) is available on the site.
- Survey will run through November 3, 2024

Online Interactive Map

- Click on the map to see if an area has been affected, or type your address in the address window in top left of map
- Choose map layers to toggle on/off the current and DRAFT Option Boundaries
- You will see a red or green notification, indicating if the address in question is impacted or not by the DRAFT Option

FCPS, MD: 2024 Valley Elementary and Brunswick Elementary Redistricting Study

Choose Map Layers to View

Legend

Print

Enter an address here

Attendance Boundaries:
ES Boundary: [Brunswick ES](#)
ES Initial Draft Option: [Valley ES](#)
MS Boundary: [Brunswick MS](#)
HS Boundary: [Brunswick HS](#)
This address is impacted by the Elementary Option.
[Zoom to](#)

Attendance Boundaries:
ES Boundary: [Valley ES](#)
MS Boundary: [Brunswick MS](#)
HS Boundary: [Brunswick HS](#)
This address is not impacted by the Elementary Option.
[Zoom to](#)

Next Steps for Board

- October 17th, 2024 - Community Engagement Presentations of DRAFT Option to the Public
 - Google Meet at 12pm
 - In-person meeting at Brunswick Elementary School (6:30 pm)
- Board Work Session on December 11, 2024
- Public Hearing on January 22, 2025
- Approval of a plan on February 12, 2025
- Implementation for the 2025/2026 school year



Questions / Answers & Gallery Walk