



-Committee Meeting 1-

Realignment Study 2020

June 19, 2019

CropperGIS



Welcome and Introductions



Who We Are



Cropper GIS Consulting, LLC

K-12 school planning is our business and our passion. Our specialty is school realignment.

Cropper works with K-12 school districts to:

- develop realignment plans,
- facilitate community engagement,
- research, map and write demographic studies,
- prepare long-range facility master plans,
- author site feasibility studies,
- conduct & publish housing impact and yield factor studies, and
- provide GIS implementation & training.

Who We Are

Cropper GIS is an ESRI Authorized Business Partner





The Company

Recent Projects:

- Cabarrus County Schools, NC
- Union County Public Schools, NC
- Brunswick County Public Schools, NC
- Frederick County Public Schools, MD
- Richmond Public Schools, VA
- Henrico County Public Schools, VA
- Alexandria City Public Schools, VA
- Frederick County Public Schools, MD
- Baltimore County Public Schools, MD



Who We Are



Matthew Cropper

- 20 years experience providing GIS mapping and analysis services to school districts and other clients.
- Manages and Facilitates K-12 realignment and facility planning projects across the U.S.
- Expert consultant for U.S. Department of Justice, Civil Right's Division
- Published numerous papers about using GIS in master planning and educational planning.

Who We Are



Why We're Here

1. Wayne County Public Schools (WCPS) are reconstructing Meadow Lane Elementary School:
 - a) Meadow Lane Elementary School will have a 700 student capacity
2. Maximize efficient use of existing classroom space, especially at the elementary level, in light of the k-3 class size reduction mandate.
3. These factors necessitate a comprehensive look at attendance boundaries.
4. The implementation of these boundary changes are expected to take effect the Fall 2020 (2020-21) School Year.



Project Objectives

1. To explore and develop elementary school realignment options through a community-based process.
2. Focus on developing options that best meet the WCPS realignment criteria.

Why We're Here



Realignment Study

Cropper GIS Consulting were hired by the district to facilitate and manage the project. Our firms are tasked to:

- A. Develop supporting materials to help facilitate the study.
- B. Facilitate a community-based process of developing a elementary school realignment plan.
- C. Empower the community throughout the process.
- D. Leverage expertise to develop logical, efficient, and effective student realignment options with the committee.

Why We're Here



Realignment Criteria

Rules to Follow

The Wayne County Public Schools has a set of criteria to follow when evaluating elementary school realignment options. These are rules to follow when considering any potential attendance zone adjustment.

The realignment committee will be oriented on these criteria and will follow them as best as possible as they consider realignment options.



Realignment Criteria

Rules to Follow

- **Balance school facility utilization**
 - Make every effort to have equitable utilization (where possible) across the district and in accordance with school capacities and funded allotment ratios in accordance with state law. Make efficient use of available space.
- **Account for future growth**
 - Allow for increasing attendance in high growth areas.
- **Close Proximity**
 - Students should be assigned to the school within the closest proximity to their homes where possible.
- **Establish clear feeder patterns and continuity**
 - Make every effort to establish a clear feeder pattern system (especially from middle school to high school), although it may be necessary to split an elementary school to feed to two or more middle schools. Make every effort to divide a large enough population so students can continue to the next level with familiar faces.



Realignment Criteria

Rules to Follow

- **Allow for highest-grade at current school grandfathering**
 - Allow for students who will be in the exit grade in the first school year of realignment to stay at their current school, however, transportation will not be provided for these students.
- **Minimize impact on students**
 - Attempt to minimize the amount of students impacted when making boundary adjustments.
- **Consider economic, cultural, and ethnic diversity**
 - Ensure schools are inclusionary, diverse, and not adversely affected by realignment decisions.
- **Make every effort to establish contiguous zones**
 - Avoid creating zones that are not connected to the primary attendance zone, where possible.



Realignment Criteria

Rules to Follow

- **Maximize busing efficiencies in transportation of students**

- Make every effort to account for transportation (school bus and car rider), parent commuting patterns, balance busing travel time, and costs.



- **Use major roads and natural boundaries wherever feasible to define attendance zones**

- Minimize the amount of students who need to cross major intersections and other barriers to maximize the safety and security of students, and optimize transportation efficiency by containing bus routes within natural boundaries wherever possible to avoid traffic delays and late arrivals.



Review of Timeline

Process & Timeline for Realignment Study									
	March '19	April '19	May '19	June '19	July '19	Aug. '19	Sept. '19	Oct. '19	Nov. '19
<i>Data Collection</i>									
<i>Data Analysis / Assimilation</i>									
<i>Internal Logistics Planning with district</i>									
<i>Grade Cohort Adjustment Feasibility Testing</i>									
<i>Background Report Development</i>									
<i>Baseline Options Development</i>									
<i>Public Information Session #1: Present Project Process, Criteria, Timeline, and Realignment Objectives to Community. Information meeting to public, without public comments.</i>				6/18					
<i>Planning Team Meeting 1</i> - Review Background Data, Introduce Baseline Options				6/19					
<i>Planning Team Meeting 2</i> - Discuss Background Data & Baseline Options, Q&A					7/8				
<i>Planning Team Meeting 3</i> - Options Development, Prepare for Public Information Session #2						8/1			
<i>Public Information Session #2: Present Preliminary Realignment Options to Community for Comment/Feedback</i>						8/19			
<i>Planning Team Meeting 4</i> - Review public input, modify options							9/16		
<i>Planning Team Meeting 5</i> - Finalize Recommendations & Prepare for Board Presentation								10/14	
<i>Presentation of Final Recommendations to the Board of Education</i>									11/25

We are here



Background Report

Each committee member will be provided with a background report. The report expands the extensive knowledge each committee and public member already has about Wayne County.

The background report helps committee members share a message with the community that is consistent and accurate.



Wayne County Public Schools, NC
Realignment Study 2020

Background Report

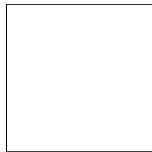
CropperGIS



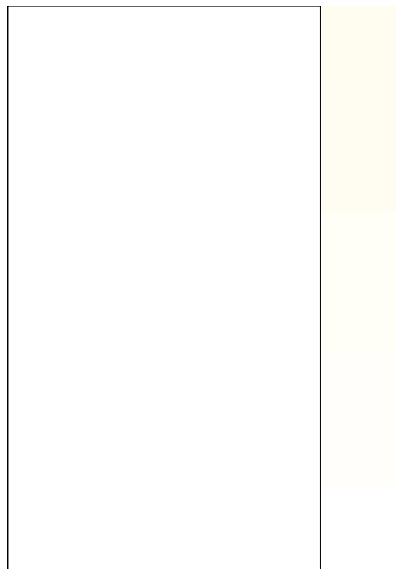
Mapping Conventions (p. 4)



- Scale Bar – Shows the distance between features



- North Arrow – helps determines the direction

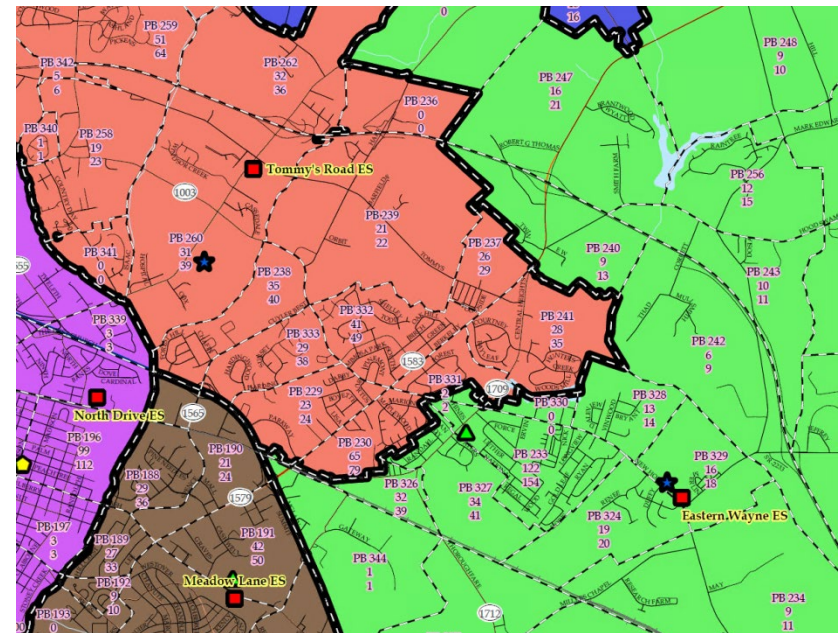


- Legend – Shows the common symbology used in the maps



Planning Blocks: small areas for examining student populations:

- Map titles and notes clarify what each planning block map represents.
- Labels within planning blocks represent one of the following:
 - Planning block ID (PB #).
 - Number of students living within planning block that attend a boundary school.





Background Report

Appendix A: Live-Attend Analysis (P. 8)

		Where 6-8th Students Live													
		Brogden MS	Dillard MS	Eastern Wayne MS	Grantham MS	Greenwood MS	Mount Olive MS	Norwayne MS	Rosewood MS	Spring Creek MS	Out of District	Unmatched	Live Out, Attend In (6-8th)		
		448	523	532	287	215	293	977	310	494	40	2	322		
Where 6-8th Students Attend	Brogden MS (5-8th)	376	371	2	3								5		
	Dillard MS (6-8th)	366	1	365									1		
	Eastern Wayne MS (6-8th)	537	6	27	474	4	1	13	3	3	5		63		
	Grantham MS (5-8th)	284	11		259		8		1		3	2	23		
	Greenwood MS (5-8th)	310	7	76	16		197	4		5	4		113		
	Mount Olive MS (5-8th)	283	12	1		2	261			2	5		22		
	Norwayne MS (6-8th)	887	1	4	7			867		1	7		20		
	Rosewood MS (6-8th)	333	6	7	2	4	1	2	17	292		2	41		
	Spring Creek MS (5-8th)	502	7	4	2		5	6	1		468		34		
	Edgewood Community Developmental School	30	4	6	4	3		3	6	3		1			
	Wayne Middle/High Academy	14	2	7	3				2						
	Wayne School of Engineering	193	14	24	24	15	8	11	67	11	15	4			
Live in, Attend Out (6-8th)		519	71	158	58	28	18	32	110	18	26				

Enrolled counts.

Live-in counts.

Live out and attend in totals per school. Total is shown at the top in the orange-colored cell.

Live in and attend out totals per school. Total is shown at the left in the blue-colored cell.

Green-colored numbers represent number of students who live in the zone and attend their zoned school. All other numbers represent students who attend school outside of the zone that they live in.



Online Map

- An online map has been developed to further inform the committee and public on the work of the committee.
- Current zones and options can be viewed on the map.
- Other features can be turned on/off on the map, including planning blocks.
- Map is customizable, and can/will be updated during the process to show new options along with other information requested by the committee.
- Site can be viewed on any device, including mobile devices and tablets (with internet connection).
- Site address is:

www.croppermap.com/waynecounty



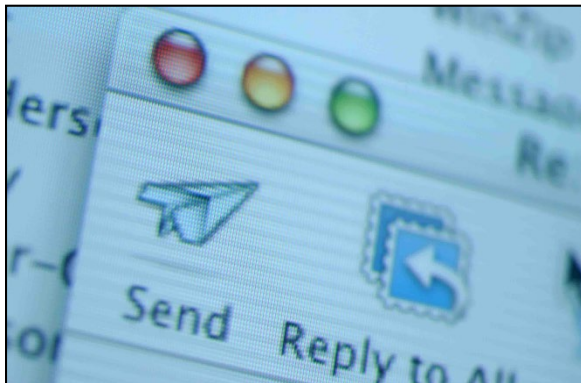
Communication Logistics



Communication Logistics

Personal Information and Email

- Committee member names will be made public. No personal information of members will be released.
- Any emails that a particular committee member wants to send to the whole committee can be sent to Cropper, and they will make sure the rest of the group receives it.
- All emails will be copied to WCPS.



*All communications
are public record.*



Questions

- Direct questions you are unable to answer to either WCPS or Cropper.
- **Realignment process website!:**
 - Helps to refer inquiring community to this website to answer questions about the school realignment process, schedule and a quantity of data and maps.
 - **www.wcpsrealignment.com**
 - **An online feedback form is on this page where any member of the public can provide ongoing input.**
- Remember to refer to your Background Report.



Review of DRAFT Options

Remember that everything is considered
DRAFT!

- Nothing is written in stone
- Existing DRAFT options are subject to change
- New options can/will be created

*Focus isn't on picking the best solution YET, but to
openly explore the various options to present to the
public for feedback*



Review of DRAFT Options

DRAFT options are presented to you this evening

- Committee has 8.5x11 maps, as well as plots of maps for review
- Option maps are now available on interactive map (www.croppermap.com/waynecounty)
- Copies of the handouts, including small and large format maps are now posted on WCPS realignment webpage.



Review of DRAFT Options

When analyzing boundary options, it is best to look at the information in two different ways:

- Study the geography i.e. shape of the current and option zone lines
 - Look at where the lines shift away from the current vs. the option
 - Look at road networks and envision how school busses and parents would travel to school
- Study the tables
 - Review the balance of enrollment, and identify any imbalances that may exist
 - Question why there may be imbalances, and examine possible ways to provide better balance



Review of DRAFT Options

Review Objectives and Criteria

- Understand how DRAFT options support the realignment study objectives and criteria.
- Examine ways to improve alignment with realignment study objectives and criteria.



Wayne County Public Schools, NC Elementary School Zones DRAFT Option 1

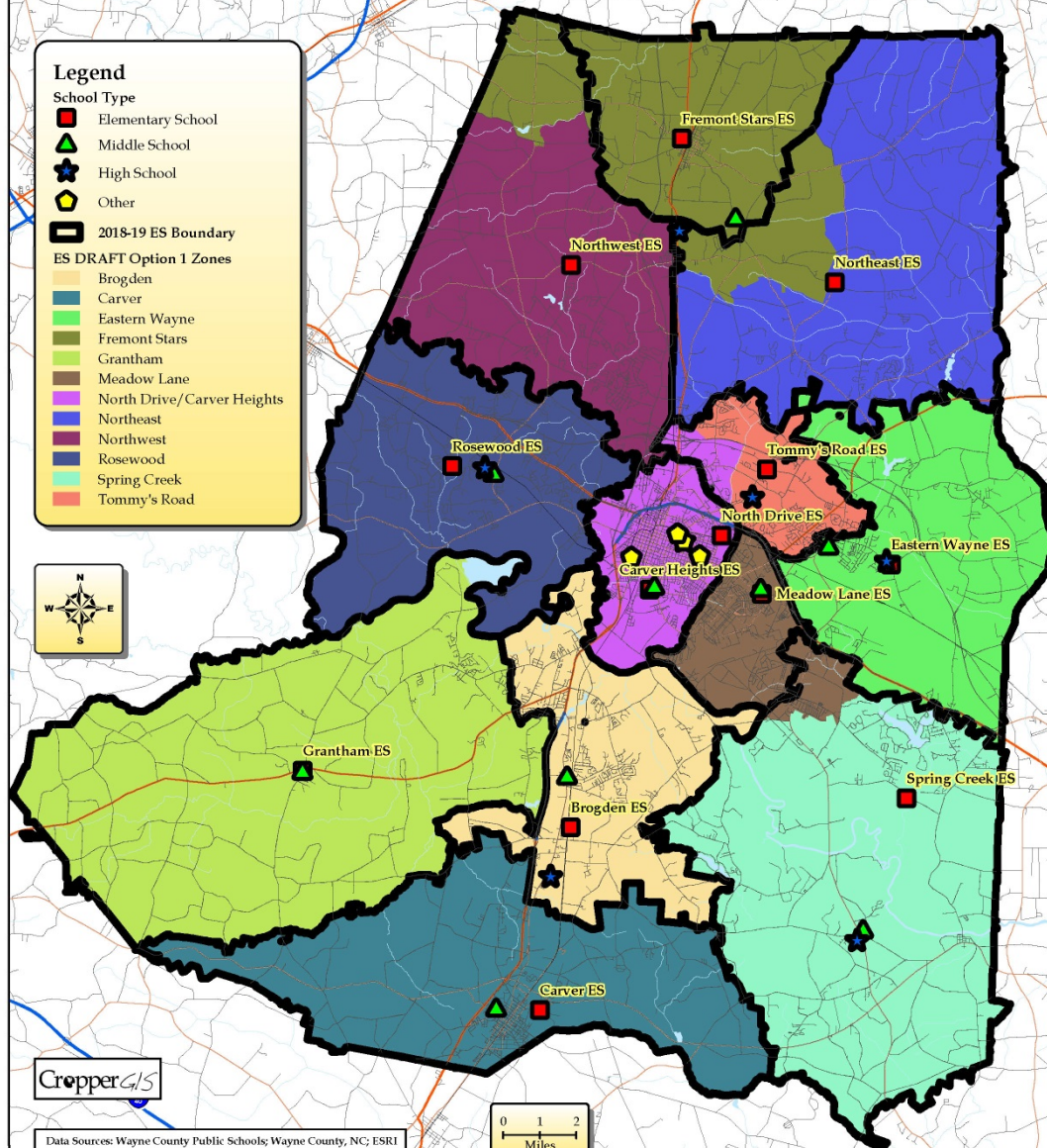


- Legend**
- School Type**
- Elementary School (Red square)
 - Middle School (Green triangle)
 - High School (Blue star)
 - Other (Yellow pentagon)
- 2018-19 ES Boundary**
- ES DRAFT Option 1 Zones**
- Brogden (Light orange)
 - Carver (Dark blue)
 - Eastern Wayne (Light green)
 - Fremont Stars (Dark green)
 - Grantham (Light green)
 - Meadow Lane (Brown)
 - North Drive/Carver Heights (Purple)
 - Northeast (Blue)
 - Northwest (Dark blue)
 - Rosewood (Dark blue)
 - Spring Creek (Cyan)
 - Tommy's Road (Pink)



CropperGIS

Data Source: Wayne County Public Schools; Wayne County, NC; ESRI
Map Created: June 2019, SD.





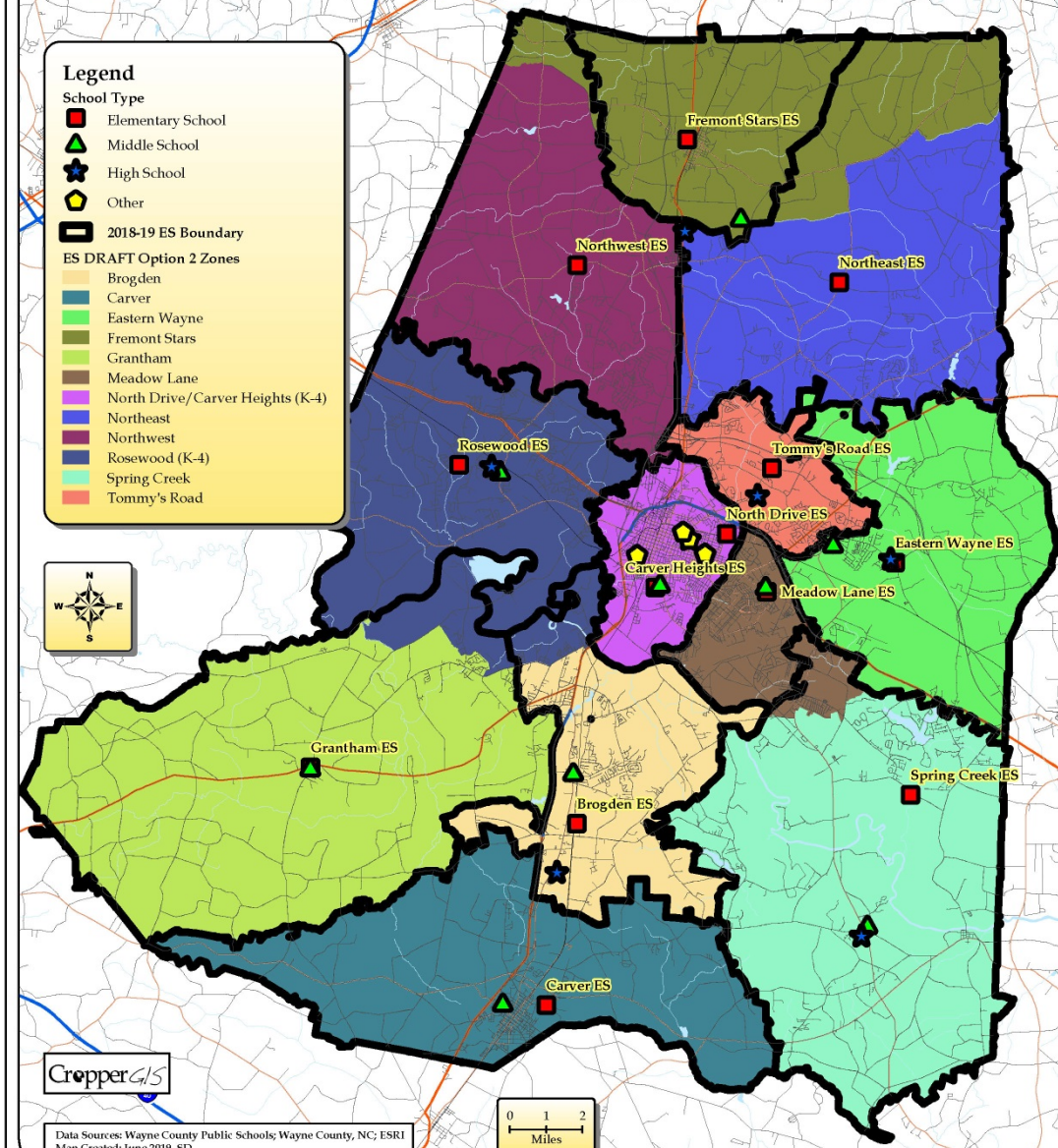
Wayne County Public Schools, NC Elementary School Zones DRAFT Option 2



- Legend**
- School Type**
- Elementary School
 - Middle School
 - High School
 - Other
- 2018-19 ES Boundary**
- ES DRAFT Option 2 Zones**
- Brogden
 - Carver
 - Eastern Wayne
 - Fremont Stars
 - Grantham
 - Meadow Lane
 - North Drive/Carver Heights (K-4)
 - Northeast
 - Northwest
 - Rosewood (K-4)
 - Spring Creek
 - Tommy's Road



Data Source: Wayne County Public Schools; Wayne County, NC; ESRI
Map Created: June 2019, SD.





Wayne County Public Schools, NC Middle School Zones DRAFT Option 1

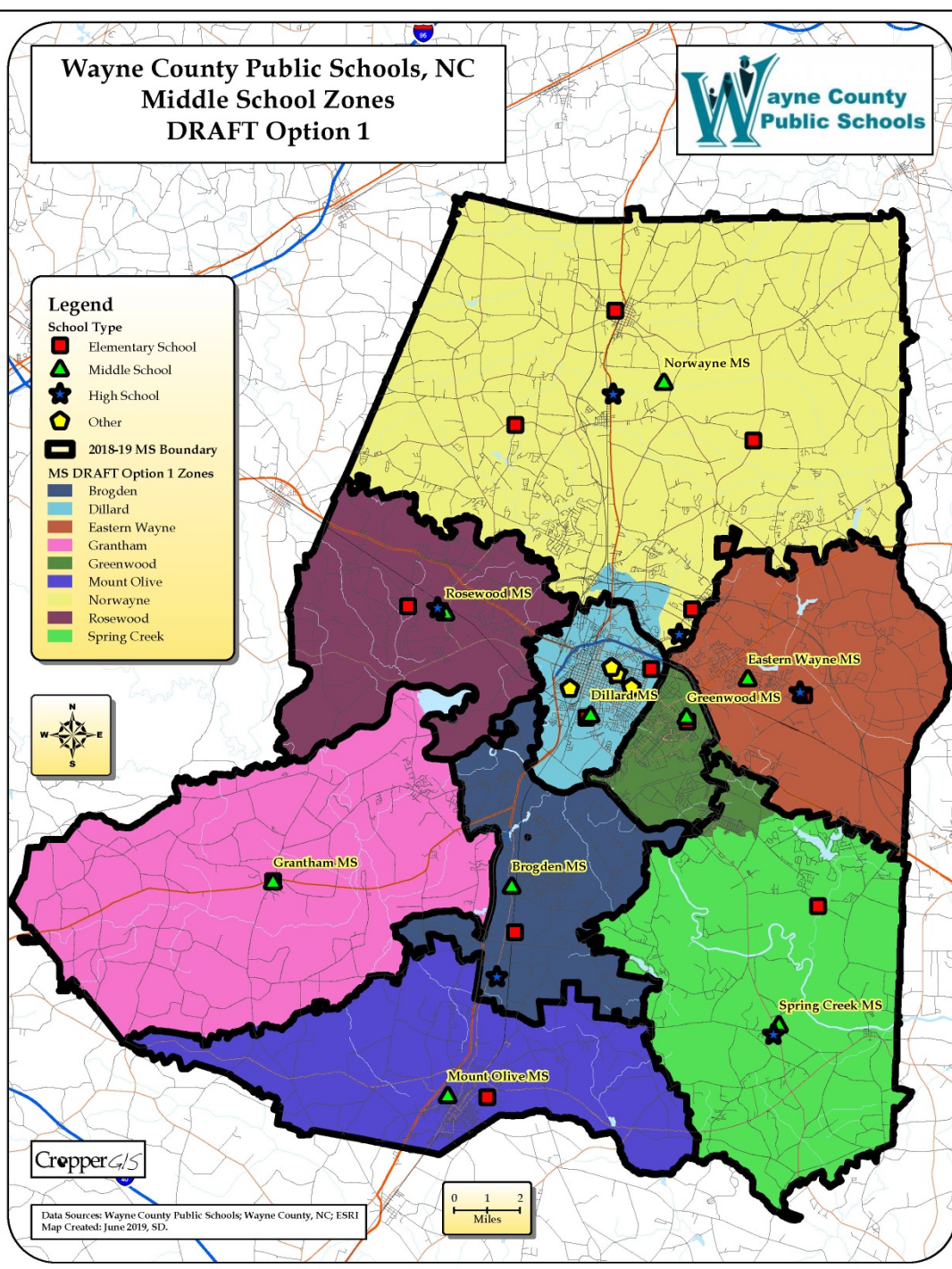


- Legend**
- School Type**
- Elementary School
 - Middle School
 - High School
 - Other
- 2018-19 MS Boundary**
- MS DRAFT Option 1 Zones**
- Brogden
 - Dillard
 - Eastern Wayne
 - Grantham
 - Greenwood
 - Mount Olive
 - Norwayne
 - Rosewood
 - Spring Creek



CropperGIS

Data Source: Wayne County Public Schools; Wayne County, NC; ESRI
Map Created: June 2019, SD.





Wayne County Public Schools, NC Middle School Zones DRAFT Option 2

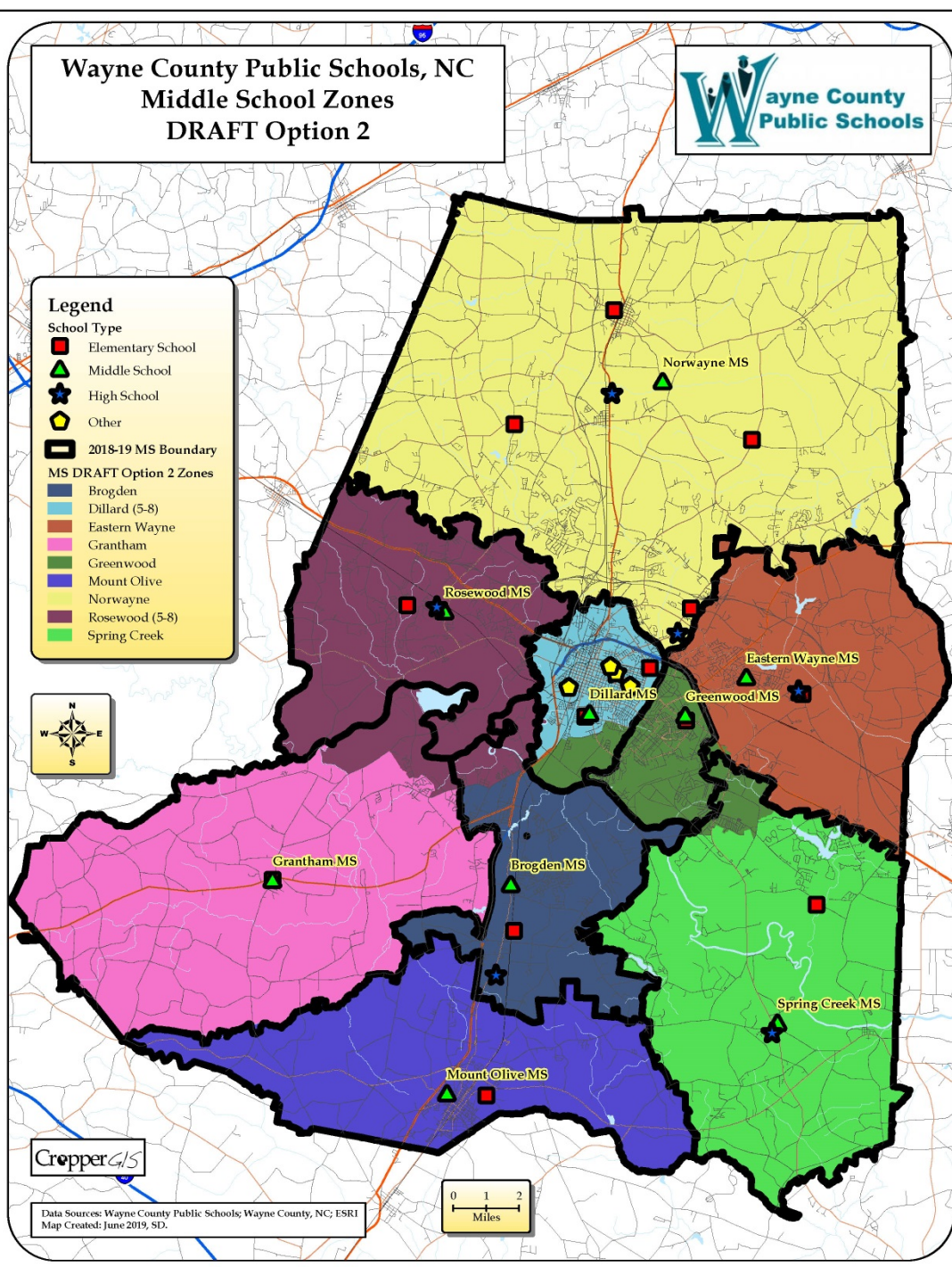


- Legend**
- School Type**
- Elementary School
 - Middle School
 - High School
 - Other
- 2018-19 MS Boundary**
- MS DRAFT Option 2 Zones**
- Brogden
 - Dillard (5-8)
 - Eastern Wayne
 - Grantham
 - Greenwood
 - Mount Olive
 - Norwayne
 - Rosewood (5-8)
 - Spring Creek



CropperGIS

Data Source: Wayne County Public Schools; Wayne County, NC; ESRI
Map Created: June 2019, SD.





Wayne County Public Schools, NC High School Zones DRAFT Option 1

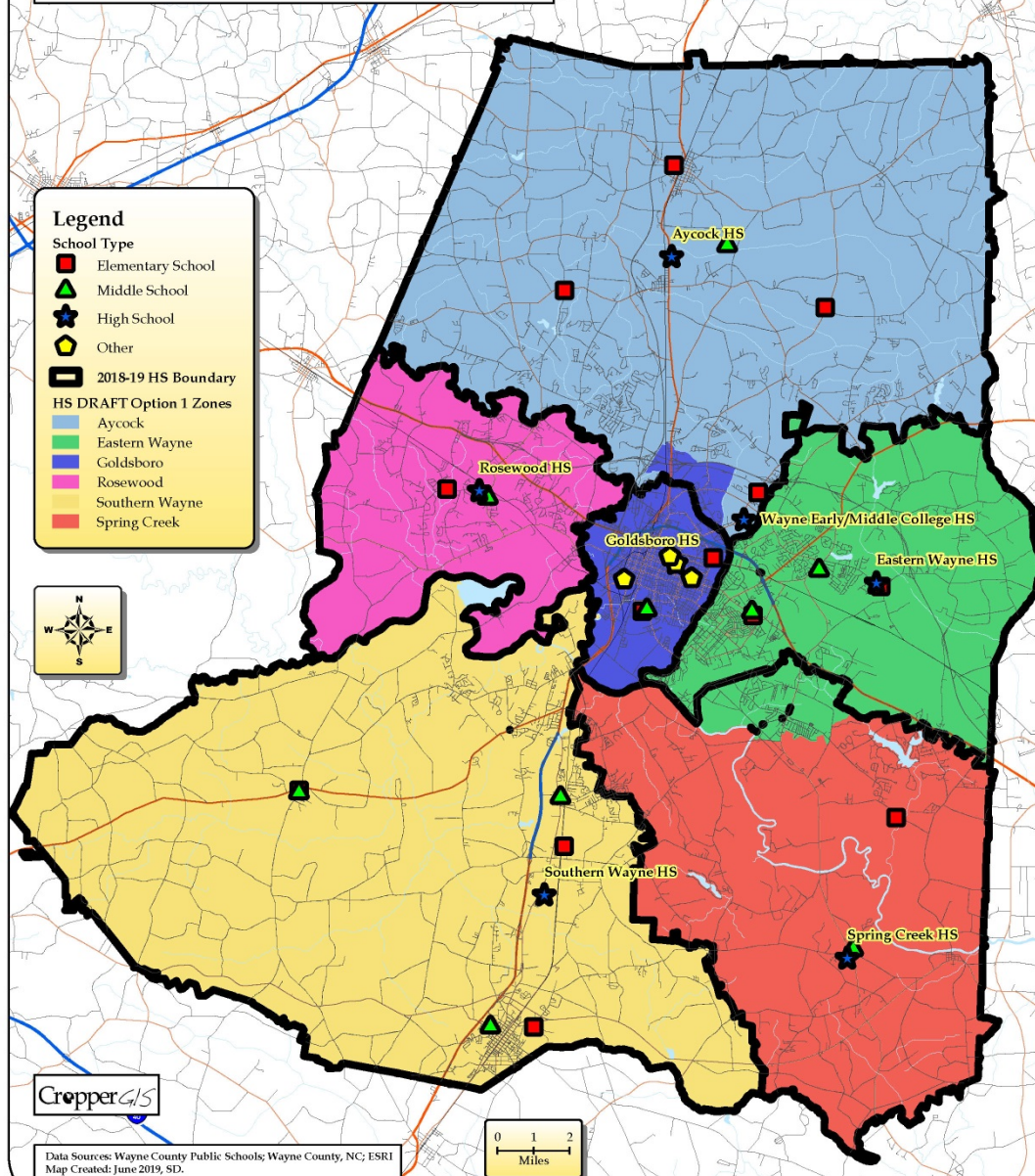


- Legend**
- School Type**
- Elementary School
 - Middle School
 - High School
 - Other
- 2018-19 HS Boundary**
- HS DRAFT Option 1 Zones**
- Aycock
 - Eastern Wayne
 - Goldsboro
 - Rosewood
 - Southern Wayne
 - Spring Creek



CropperGIS

Data Source: Wayne County Public Schools; Wayne County, NC; ESRI
Map Created: June 2019, SD.





Wayne County Public Schools, NC High School Zones DRAFT Option 2



Legend

School Type

- Elementary School (Red square)
- Middle School (Green triangle)
- High School (Blue star)
- Other (Yellow pentagon)

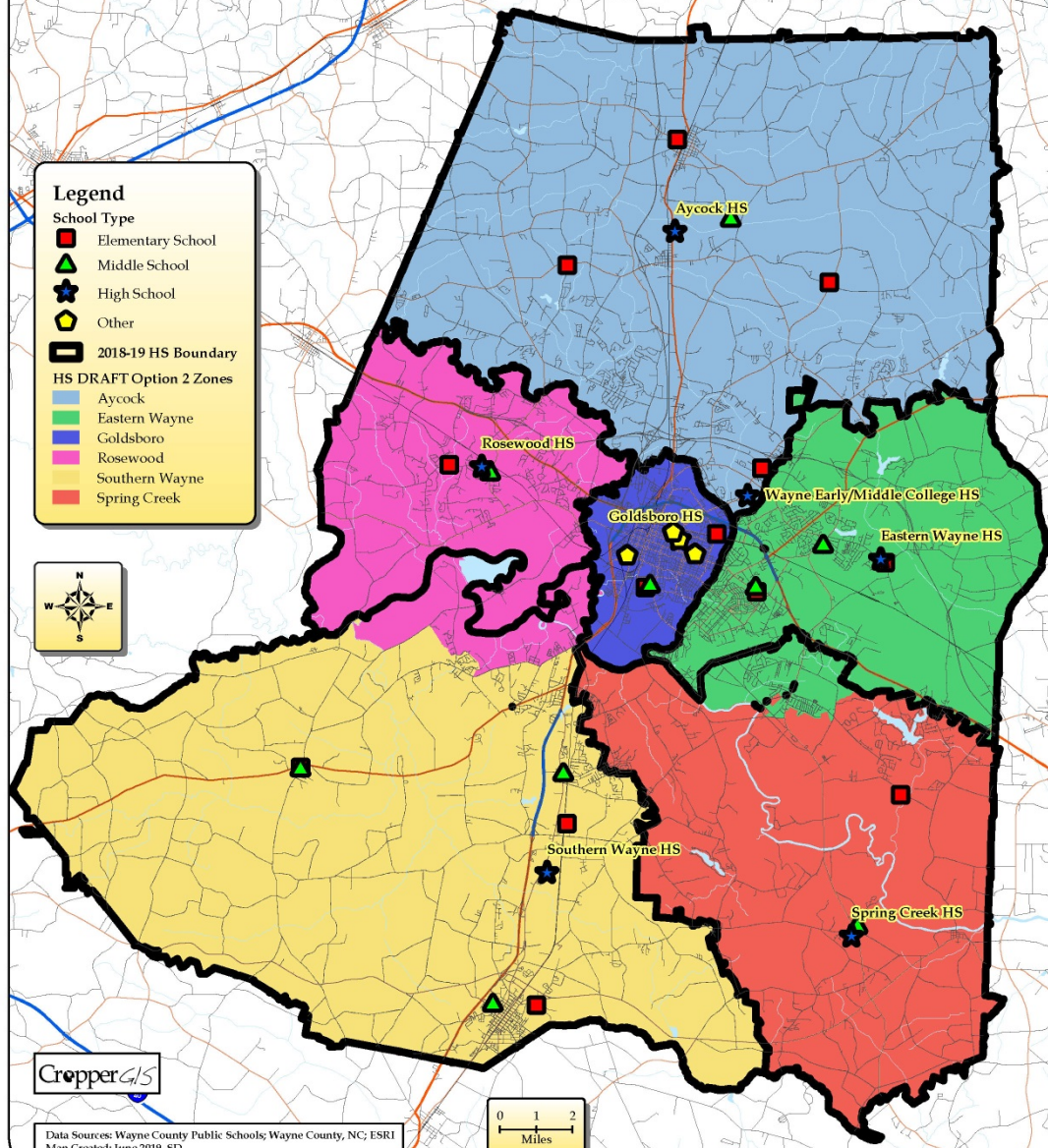
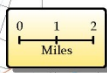
2018-19 HS Boundary

HS DRAFT Option 2 Zones

- Aycock (Light blue)
- Eastern Wayne (Light green)
- Goldsboro (Blue)
- Rosewood (Pink)
- Southern Wayne (Yellow)
- Spring Creek (Red)



Data Source: Wayne County Public Schools; Wayne County, NC; ESRI
Map Created: June 2019, SD.





Review of DRAFT Options

Elementary School	Grade Config	2018-19 Capacity	Total Enrolled	DRAFT Option 1 Estimated Enrollment	DRAFT Option 2 Estimated Enrollment
Brogden Primary School	K-4	750	789	789	729
Carver Elementary School	K-4	518	563	563	563
Carver Heights Elementary School	3-5	586	450	465	503
Eastern Wayne Elementary School	K-5	617	664	664	664
Fremont Elementary School	K-5	308	246	333	315
Grantham Elementary School	K-4	396	445	445	424
Meadowlane Elementary School	K-4	723	561	658	658
North Drive Elementary School	K-2	498	597	619	403
Northeast Elementary School	K-5	585	685	632	630
Northwest Elementary School	K-5	667	752	718	738
Rosewood Elementary School	K-5	590	635	635	595
Spring Creek Elementary School	K-4	726	831	734	734
Tommy's Road Elementary School	K-5	603	673	636	673
Total		7567	7891	7891	7629

Student counts are based on the 10/08/2018 WCPS student database.

The estimated enrollment is calculated by adding the total number students within each new DRAFT option zone that “Live and Attend In” for the grade configuration for that school, plus the students that “Live Out and Attend In” a 2018-19 school, during the 2018-19 school year, plus students attending that school that live outside of the district, plus those students that could not be located in the GIS.



Review of DRAFT Options

Elementary School	Grade Config	2018-19 Capacity	Enrolled Utilization	DRAFT Option 1 Utilization	DRAFT Option 2 Utilization
Brogden Primary School	K-4	750	105%	105%	97%
Carver Elementary School	K-4	518	109%	109%	109%
Carver Heights Elementary School	3-5	586	77%	79%	86%
Eastern Wayne Elementary School	K-5	617	108%	108%	108%
Fremont Elementary School	K-5	308	80%	108%	102%
Grantham Elementary School	K-4	396	112%	112%	107%
Meadowlane Elementary School	K-4	723	78%	91%	91%
North Drive Elementary School	K-2	498	120%	124%	81%
Northeast Elementary School	K-5	585	117%	108%	108%
Northwest Elementary School	K-5	667	113%	108%	111%
Rosewood Elementary School	K-5	590	108%	108%	101%
Spring Creek Elementary School	K-4	726	114%	101%	101%
Tommy's Road Elementary School	K-5	603	112%	105%	112%
Total		7567	104%	104%	101%

Student counts are based on the 10/08/2018 WCPS student database.

The estimated enrollment is calculated by adding the total number students within each new DRAFT option zone that “Live and Attend In” for the grade configuration for that school, plus the students that “Live Out and Attend In” a 2018-19 school, during the 2018-19 school year, plus students attending that school that live outside of the district, plus those students that could not be located in the GIS.



Review of DRAFT Options

Elementary School	Enrolled				
	Percent Black	Percent White	Percent Other	Percent Non-Hispanic	Percent Hispanic
Brogden Primary School	34.3%	10.4%	55.3%	46.8%	53.2%
Carver Elementary School	40.5%	18.8%	40.7%	62.3%	37.7%
Carver Heights Elementary School	91.3%	3.1%	5.6%	96.2%	3.8%
Eastern Wayne Elementary School	45.2%	26.8%	28.0%	77.9%	22.1%
Fremont Elementary School	19.1%	59.8%	21.1%	85.8%	14.2%
Grantham Elementary School	18.7%	54.8%	26.5%	76.0%	24.0%
Meadowlane Elementary School	36.0%	34.8%	29.2%	83.6%	16.4%
North Drive Elementary School	88.4%	3.2%	8.4%	94.3%	5.7%
Northeast Elementary School	22.3%	54.3%	23.4%	85.5%	14.5%
Northwest Elementary School	20.1%	62.0%	18.0%	88.7%	11.3%
Rosewood Elementary School	10.9%	65.2%	23.9%	86.3%	13.7%
Spring Creek Elementary School	10.7%	27.7%	61.6%	40.6%	59.4%
Tommy's Road Elementary School	48.3%	31.9%	19.8%	89.5%	10.5%
Total	36.2%	34.0%	29.8%	75.9%	24.1%

Student counts are based on the 10/08/2018 WCPS student database.



Review of DRAFT Options

Option	Total K-5th Live-In Students Impacted
Option 1	221
Option 2	524

The Impact of Option 2 also includes 254 5th grade students from Rosewood ES and Carver Heights ES that will change from Elementary School to Middle School

ES Zone 2019-20	DRAFT Option 1 ES Zone	Total Grade Config Live and Attend In Students
Brogden	Brogden	769
Carver	Carver	549
Eastern Wayne	Eastern Wayne	596
Fremont Stars	Fremont Stars	174
Grantham	Grantham	421
Meadow Lane	Meadow Lane	461
North Drive/Carver Heights	North Drive/Carver Heights	1028
Northeast	Fremont Stars	53
Northeast	Northeast	592
Northwest	Fremont Stars	34
Northwest	Northwest	690
Rosewood	Rosewood	592
Spring Creek	Meadow Lane	97
Spring Creek	Spring Creek	685
Tommy's Road	North Drive/Carver Heights	37
Tommy's Road	Tommy's Road	482



Review of DRAFT Options

2018-19 ES Zone	2018-19 MS Zone	Total K-5th Live and Attend-In	ES Attendance
Brogden	Brogden	960	100%
Carver	Grantham	1	0%
Carver	Mount Olive	646	100%
Eastern Wayne	Eastern Wayne	596	100%
Fremont Stars	Norwayne	174	100%
Grantham	Grantham	524	100%
Meadow Lane	Greenwood	534	100%
North Drive/Carver Heights	Dillard	1028	100%
Northeast	Norwayne	645	100%
Northwest	Norwayne	724	100%
Rosewood	Rosewood	592	100%
Spring Creek	Greenwood	5	1%
Spring Creek	Spring Creek	923	99%
Tommy's Road	Eastern Wayne	337	65%
Tommy's Road	Norwayne	182	35%



Small Group Exercise

Break into 3 groups

Each group review the options tables and maps.

Planning blocks can be adjusted if you feel they are dividing a neighborhood or can be refined in any way.

Please feel free to note any changes or highlight any part of the map you want to discuss. If you have any notes/comments, please write them directly on the plots.

Once you've had time to evaluate the info, the groups will report to the full committee.



**Next Meeting will be:
July 8, 2019 @ 6pm
WCPS School Board Office**

Same place, same time!