

School Utilization Modeling

School utilization refers to the ‘percent full’ a building is. It is calculated by dividing the enrollment by the building capacity. A color-scale has been set to help visualize how building utilization varies among schools across the district. The legend to the right shows what the colors reflect.

Below 75% Utilization
Between 75-89% Utilization
Between 90-105% Utilization
Between 106-114% Utilization
Over 115% Utilization

Forecast Utilization: 2018-19 Grade Configuration

The first table shows the forecasted enrollment for each school. The second table shows the utilization for each school using the forecasted enrollment.

	Capacity	2015-16	2016-17	2017-18	2018-19	2019-20	2020-21	2021-22	2022-23	2023-24	2024-25	2025-26	2026-27	2027-28	2028-29
Brogden Primary (K-4)	750	838	854	863	790	767	747	727	704	702	695	688	687	685	684
Carver Elementary (K-4)	518	562	547	556	563	564	559	574	557	557	554	549	546	543	542
Eastern Wayne Elementary	617	700	699	681	664	645	645	650	646	653	649	642	639	635	632
Fremont Stars Elementary	308	254	244	242	246	250	243	239	247	259	258	254	252	250	249
Grantham Elementary(K-4)	396	473	471	486	447	452	452	446	442	447	449	449	451	450	450
Meadow Lane Elementary (K-4)	723	641	618	577	561	548	538	539	541	541	539	537	537	538	538
North Drive Elementary	498	579	520	573	595	592	588	584	579	575	569	564	557	551	548
Carver Heights Elementary	586	429	404	421	447	471	493	509	510	510	508	503	505	505	504
Northeast Elementary	585	664	659	695	686	705	707	692	698	685	683	676	675	669	664
Northwest Elementary	667	745	728	771	752	753	755	753	770	760	759	751	750	746	741
Rosewood Elementary	590	654	651	634	635	619	622	619	634	632	624	617	616	613	610
Spring Creek Elementary (K-4)	726	835	833	810	829	826	814	793	790	790	787	783	789	791	792
Tommy's Road Elementary	603	586	665	652	673	666	678	698	710	713	708	703	702	700	699
ES Total	7567	7960	7893	7961	7888	7858	7841	7823	7828	7824	7782	7716	7706	7676	7653

Brogden MS (5-8)	672	507	504	520	572	600	619	630	595	577	564	550	534	538	539
Eastern Wayne MS	498	613	574	566	538	572	549	552	527	528	550	560	572	570	567
Dillard MS	501	388	331	316	366	393	399	416	435	457	472	473	470	465	463
Grantham MS (5-8)	423	387	428	385	392	369	355	376	365	369	373	365	357	360	361
Greenwood MS (5-8)	563	484	459	479	389	365	358	345	346	339	336	340	342	342	341
Mount Olive MS (5-8)	387	418	405	413	386	392	407	392	413	414	415	431	412	411	408
Norwayne MS	781	903	874	873	893	880	905	918	918	932	911	948	934	934	928
Rosewood MS	433	384	313	325	333	351	318	315	284	289	290	308	307	302	301
Spring Creek MS (5-8)	564	604	629	656	660	682	657	681	692	688	681	660	648	645	644
MS Total	4822	4688	4517	4533	4529	4604	4567	4625	4575	4593	4592	4635	4576	4567	4552

Aycock HS	1296	1278	1266	1232	1164	1129	1097	1116	1102	1109	1154	1119	1153	1151	1135
Eastern Wayne HS	1403	1048	1051	1044	964	905	882	836	851	834	806	810	788	798	814
Goldsboro HS	672	572	547	530	575	583	589	582	579	576	582	618	637	661	676
Rosewood HS	556	515	536	512	499	475	467	460	466	462	439	416	400	409	407
Southern Wayne HS	1219	1111	1094	1097	1085	1067	1048	1005	990	981	994	986	1015	1015	1014
Spring Creek HS	773	680	700	689	714	706	754	757	751	769	757	783	784	768	751
HS Total	5919	5204	5194	5104	5001	4865	4837	4756	4739	4731	4732	4732	4777	4802	4797

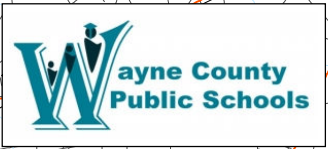
Grand Total	18308	17852	17604	17598	17418	17327	17245	17204	17142	17148	17106	17083	17059	17045	17002
-------------	-------	-------	-------	-------	-------	-------	-------	-------	-------	-------	-------	-------	-------	-------	-------

Forecast Utilization: 2018-19 Grade Configuration

	Capacity	2015-16	2016-17	2017-18	2018-19	2019-20	2020-21	2021-22	2022-23	2023-24	2024-25	2025-26	2026-27	2027-28	2028-29
Brogden Primary (K-4)	750	111.7%	113.9%	115.1%	105.3%	102.3%	99.6%	96.9%	93.9%	93.6%	92.7%	91.7%	91.6%	91.3%	91.2%
Carver Elementary (K-4)	518	108.5%	105.6%	107.3%	108.7%	108.9%	107.9%	110.8%	107.5%	107.5%	106.9%	106.0%	105.4%	104.8%	104.6%
Eastern Wayne Elementary	617	113.5%	113.3%	110.4%	107.6%	104.5%	104.5%	105.3%	104.7%	105.8%	105.2%	104.1%	103.6%	102.9%	102.4%
Fremont Stars Elementary	308	82.5%	79.2%	78.6%	79.9%	81.2%	78.9%	77.6%	80.2%	84.1%	83.8%	82.5%	81.8%	81.2%	80.8%
Grantham Elementary(K-4)	396	119.4%	118.9%	122.7%	112.9%	114.1%	114.1%	112.6%	111.6%	112.9%	113.4%	113.4%	113.9%	113.6%	113.6%
Meadow Lane Elementary (K-4)	723	88.7%	85.5%	79.8%	77.6%	75.8%	74.4%	74.6%	74.8%	74.8%	74.6%	74.3%	74.3%	74.4%	74.4%
North Drive Elementary	498	116.3%	104.4%	115.1%	119.5%	118.9%	118.1%	117.3%	116.3%	115.5%	114.3%	113.3%	111.8%	110.6%	110.0%
Carver Heights Elementary	586	73.2%	68.9%	71.8%	76.3%	80.4%	84.1%	86.9%	87.0%	87.0%	86.7%	85.8%	86.2%	86.2%	86.0%
Northeast Elementary	585	113.5%	112.6%	118.8%	117.3%	120.5%	120.9%	118.3%	119.3%	117.1%	116.8%	115.6%	114.4%	114.4%	113.5%
Northwest Elementary	667	111.7%	109.1%	115.6%	112.7%	112.9%	113.2%	112.9%	115.4%	113.9%	113.8%	112.6%	112.4%	111.8%	111.1%
Rosewood Elementary	590	110.8%	110.3%	107.5%	107.6%	104.9%	105.4%	104.9%	107.5%	107.1%	105.8%	104.6%	104.4%	103.9%	103.4%
Spring Creek Elementary (K-4)	726	115.0%	114.7%	111.6%	114.2%	113.8%	112.1%	109.2%	108.8%	108.8%	108.4%	107.9%	108.7%	109.0%	109.1%
Tommy's Road Elementary	603	97.2%	110.3%	108.1%	111.6%	110.4%	112.4%	115.8%	117.7%	118.2%	117.4%	116.6%	116.4%	116.1%	115.9%
ES Total	7567	105.2%	104.3%	105.2%	104.2%	103.8%	103.6%	103.4%	103.4%	103.4%	102.8%	102.0%	101.8%	101.4%	101.1%

	Capacity	2015-16	2016-17	2017-18	2018-19	2019-20	2020-21	2021-22	2022-23	2023-24	2024-25	2025-26	2026-27	2027-28	2028-29
Brogden MS (5-8)	672	75.4%	75.0%	77.4%	85.1%	89.3%	92.1%	93.8%	88.5%	85.9%	83.9%	81.8%	79.5%	80.1%	80.2%
Eastern Wayne MS	498	123.1%	115.3%	113.7%	108.0%	114.9%	110.2%	110.8%	105.8%	106.0%	110.4%	112.4%	114.9%	114.5%	113.9%
Dillard MS	501	77.4%	66.1%	63.1%	73.1%	78.4%	79.6%	83.0%	86.8%	91.2%	94.2%	94.4%	93.8%	92.8%	92.4%
Grantham MS (5-8)	423	91.5%	101.2%	91.0%	92.7%	87.2%	83.9%	88.9%	86.3%	87.2%	88.2%	86.3%	84.4%	85.1%	85.3%
Greenwood MS (5-8)	563	86.0%	81.5%	85.1%	69.1%	64.8%	63.6%	61.3%	61.5%	60.2%	59.7%	60.4%	60.7%	60.7%	60.6%
Mount Olive MS (5-8)	387	108.0%	104.7%	106.7%	99.7%	101.3%	105.2%	101.3%	106.7%	107.0%	107.2%	111.4%	106.5%	106.2%	105.4%
Norwayne MS	781	115.6%	111.9%	111.8%	114.3%	112.7%	115.9%	117.5%	117.5%	119.3%	116.6%	121.4%	119.6%	119.6%	118.8%
Rosewood MS	433	88.7%	72.3%	75.1%	76.9%	81.1%	73.4%	72.7%	65.6%	66.7%	67.0%	71.1%	70.9%	69.7%	69.5%
Spring Creek MS (5-8)	564	107.1%	111.5%	116.3%	117.0%	120.9%	116.5%	120.7%	122.7%	122.0%	120.7%	117.0%	114.9%	114.4%	114.2%
MS Total	4822	97.2%	93.7%	94.0%	93.9%	95.5%	94.7%	95.9%	94.9%	95.3%	95.2%	96.1%	94.9%	94.7%	94.4%

	Capacity	2015-16	2016-17	2017-18	2018-19	2019-20	2020-21	2021-22	2022-23	2023-24	2024-25	2025-26	2026-27	2027-28	2028-29
Aycock HS	1296	98.6%	97.7%	95.1%	89.8%	87.1%	84.6%	86.1%	85.0%	85.6%	89.0%	86.3%	89.0%	88.8%	87.6%
Eastern Wayne HS	1403	74.7%	74.9%	74.4%	68.7%	64.5%	62.9%	59.6%	60.7%	59.4%	57.4%	57.7%	56.2%	56.9%	58.0%
Goldsboro HS	672	85.1%	81.4%	78.9%	85.6%	86.8%	87.6%	86.6%	86.2%	85.7%	86.6%	92.0%	94.8%	98.4%	100.6%
Rosewood HS	556	92.6%	96.4%	92.1%	89.7%	85.4%	84.0%	82.7%	83.8%	83.1%	79.0%	74.8%	71.9%	73.6%	73.2%
Southern Wayne HS	1219	91.1%	89.7%	90.0%	89.0%	87.5%	86.0%	82.4%	81.2%	80.5%	81.5%	80.9%	83.3%	83.3%	83.2%
Spring Creek HS	773	88.0%	90.6%	89.1%	92.4%	91.3%	97.5%	97.9%	97.2%	99.5%	97.9%	101.3%	101.4%	99.4%	97.2%
HS Total	5919	87.9%	87.8%	86.2%	84.5%	82.2%	81.7%	80.4%	80.1%	79.9%	79.9%	79.9%	80.7%	81.1%	81.0%



Wayne County Schools, NC 2018-19 Elementary Zones Utilization

Legend

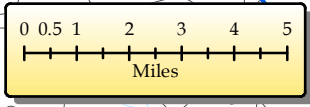
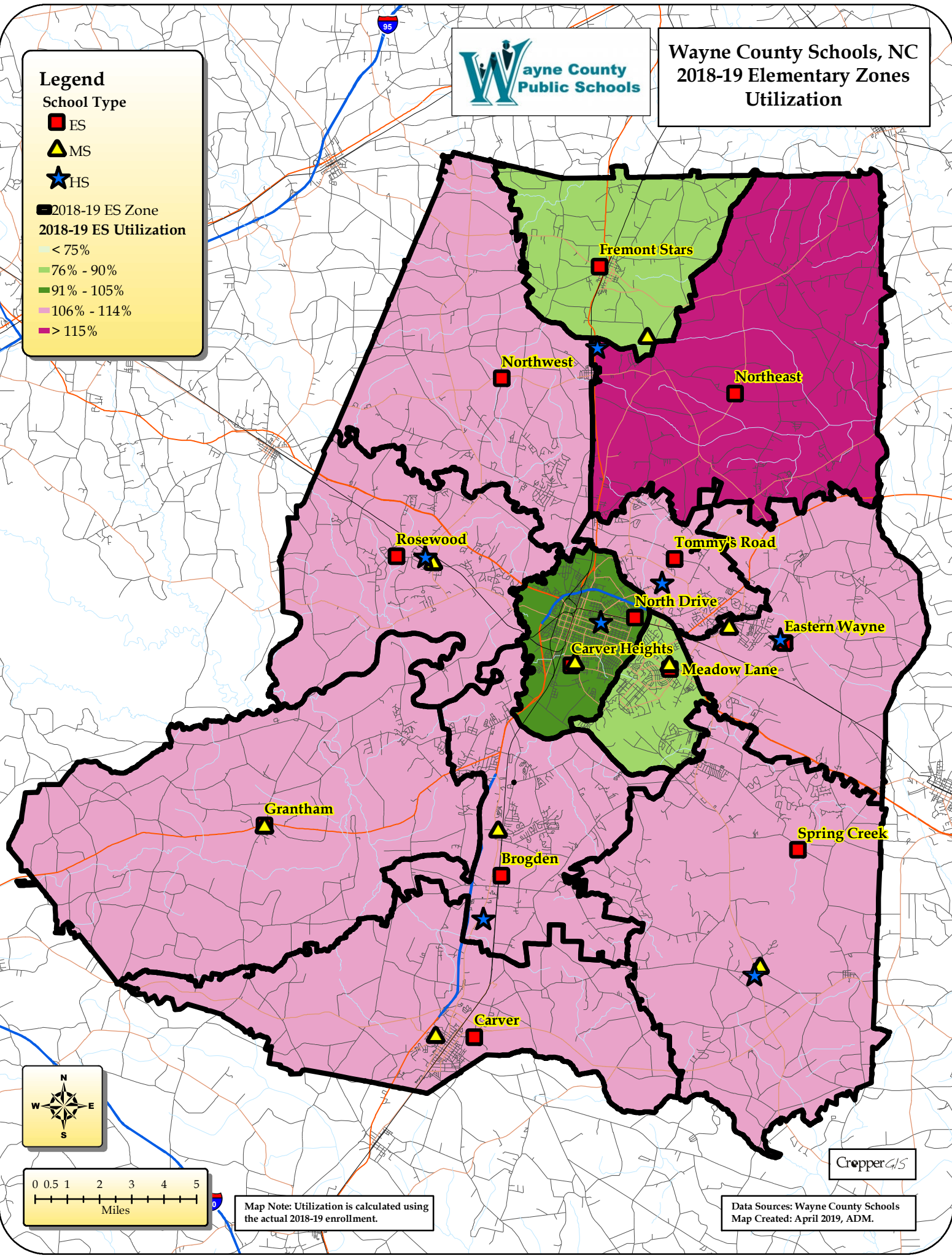
School Type

- ES
- ▲ MS
- ★ HS

2018-19 ES Zone

2018-19 ES Utilization

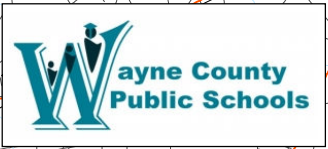
- < 75%
- 76% - 90%
- 91% - 105%
- 106% - 114%
- > 115%



Map Note: Utilization is calculated using the actual 2018-19 enrollment.

Data Sources: Wayne County Schools
Map Created: April 2019, ADM.





Wayne County Schools, NC 2023-24 Elementary Zones Utilization

Legend

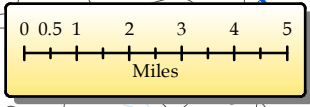
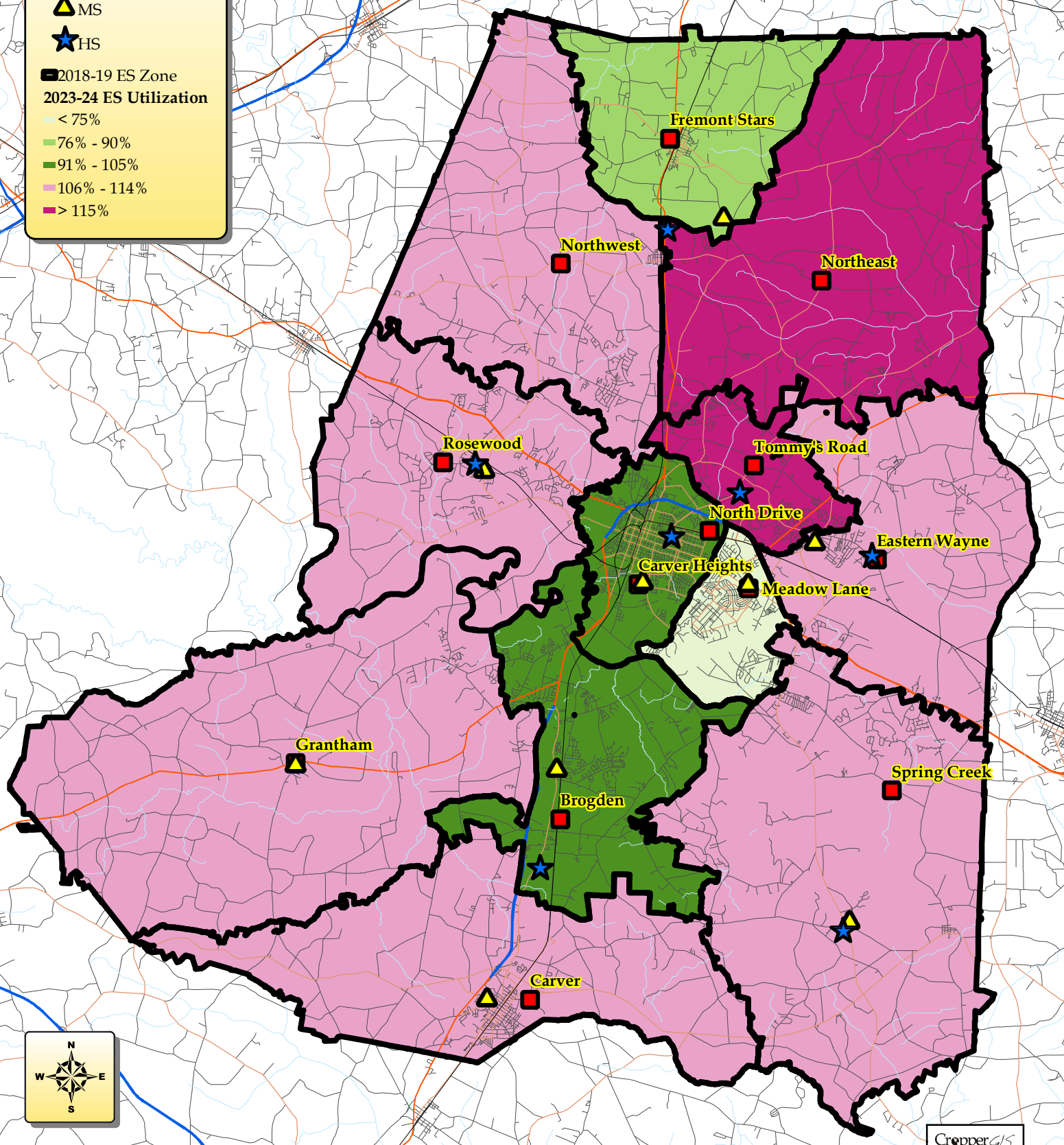
School Type

- ES
- ▲ MS
- ★ HS

2018-19 ES Zone

2023-24 ES Utilization

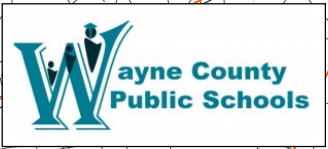
- < 75%
- 76% - 90%
- 91% - 105%
- 106% - 114%
- > 115%



Map Note: Utilization is calculated using the forecasted 2023-24 enrollment.

Data Sources: Wayne County Schools
Map Created: April 2019, ADM.





Wayne County Schools, NC 2028-29 Elementary Zones Utilization

Legend

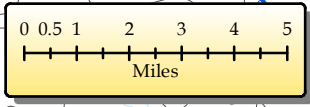
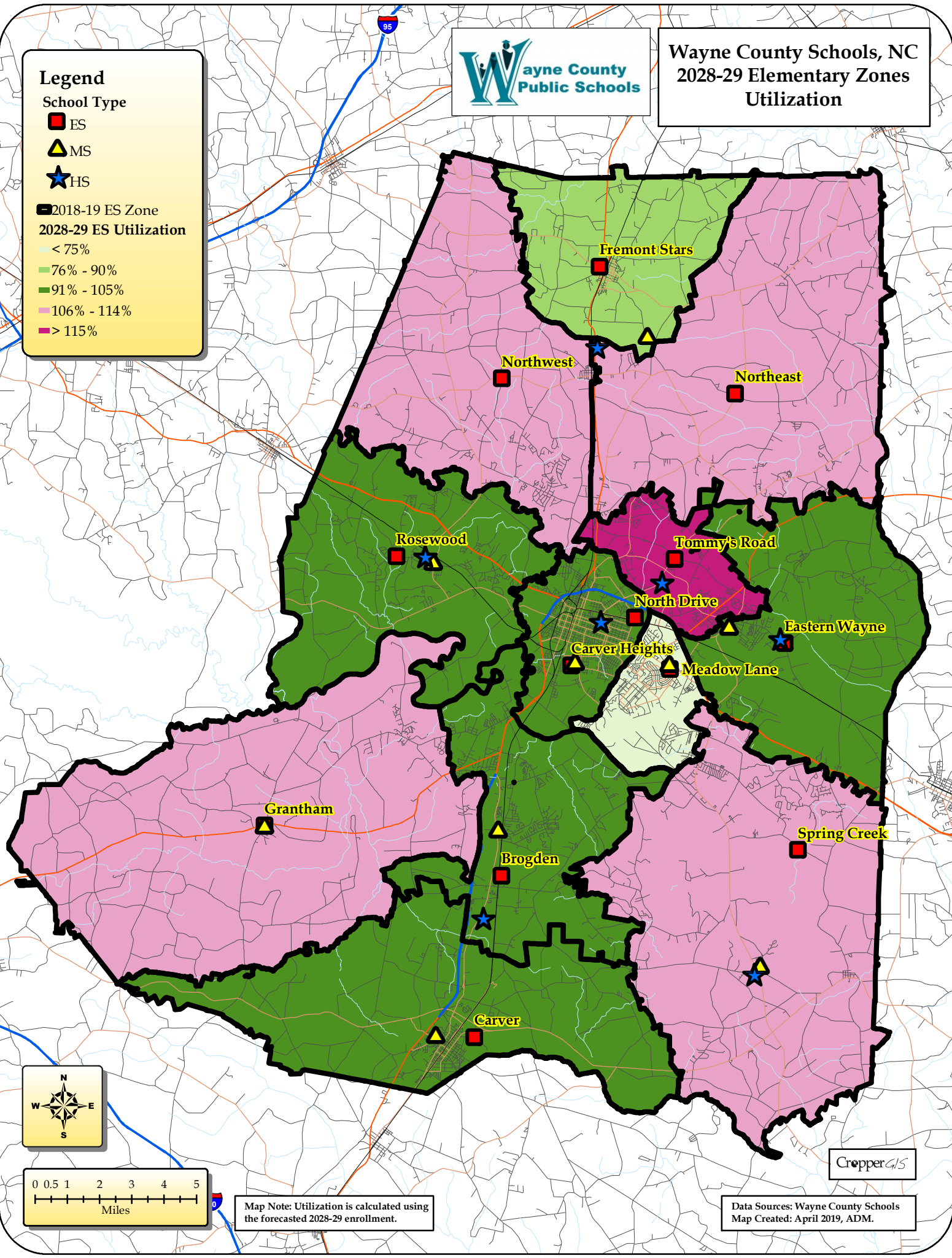
School Type

- ES
- ▲ MS
- ★ HS

2018-19 ES Zone

2028-29 ES Utilization

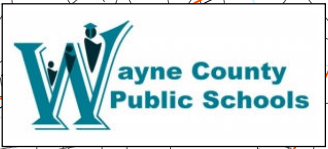
- < 75%
- 76% - 90%
- 91% - 105%
- 106% - 114%
- > 115%



Map Note: Utilization is calculated using the forecasted 2028-29 enrollment.

Data Sources: Wayne County Schools
Map Created: April 2019, ADM.





Wayne County Schools, NC 2018-19 Middle School Zones Utilization

Legend

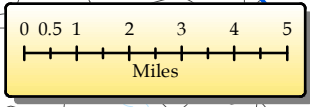
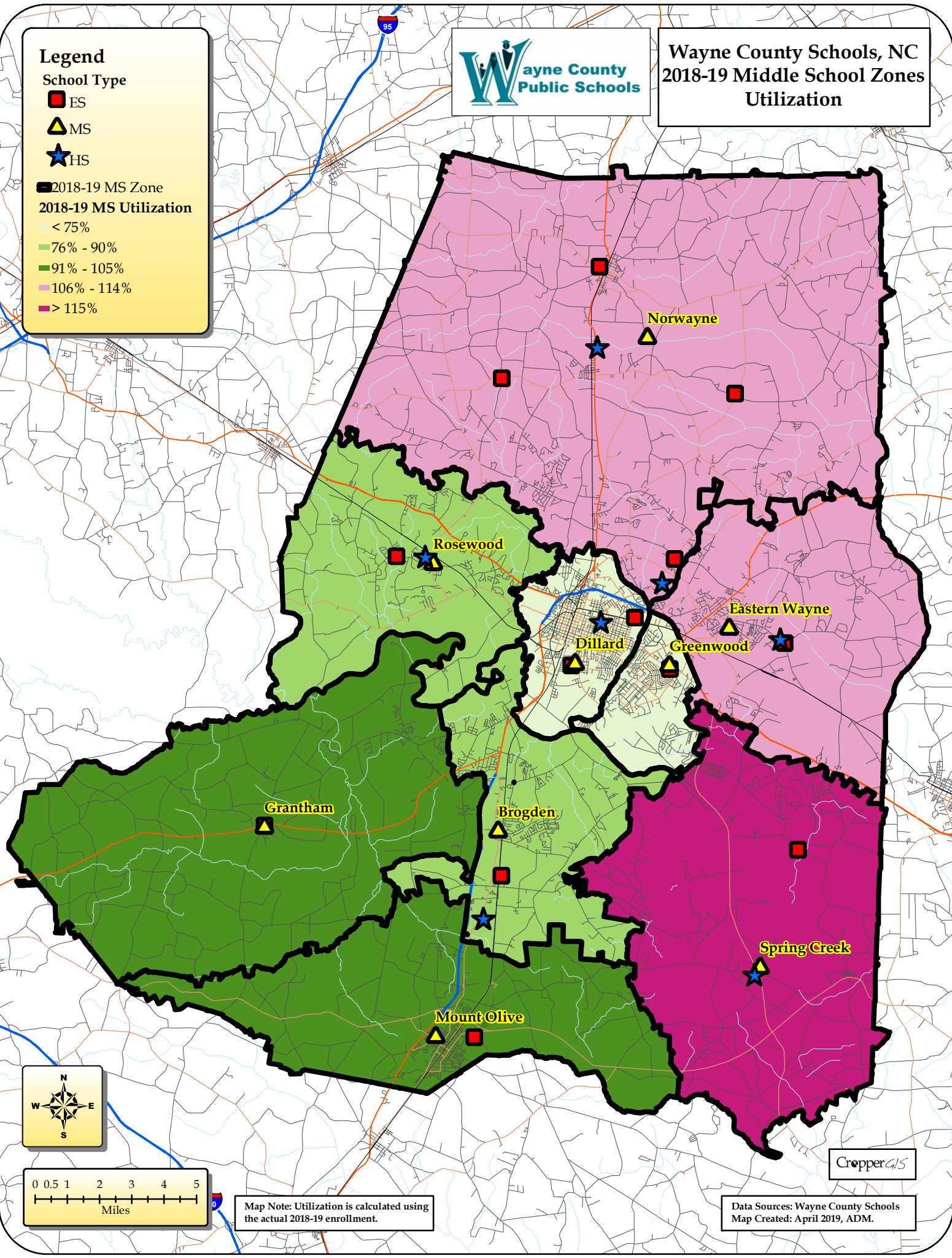
School Type

- ES (Red square)
- MS (Yellow triangle)
- HS (Blue star)

2018-19 MS Zone

2018-19 MS Utilization

- < 75% (Lightest green)
- 76% - 90% (Light green)
- 91% - 105% (Medium green)
- 106% - 114% (Pink)
- > 115% (Dark pink)



Map Note: Utilization is calculated using the actual 2018-19 enrollment.

Data Sources: Wayne County Schools
Map Created: April 2019, ADM.





Wayne County Schools, NC 2023-24 Middle School Zones Utilization

Legend

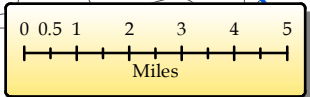
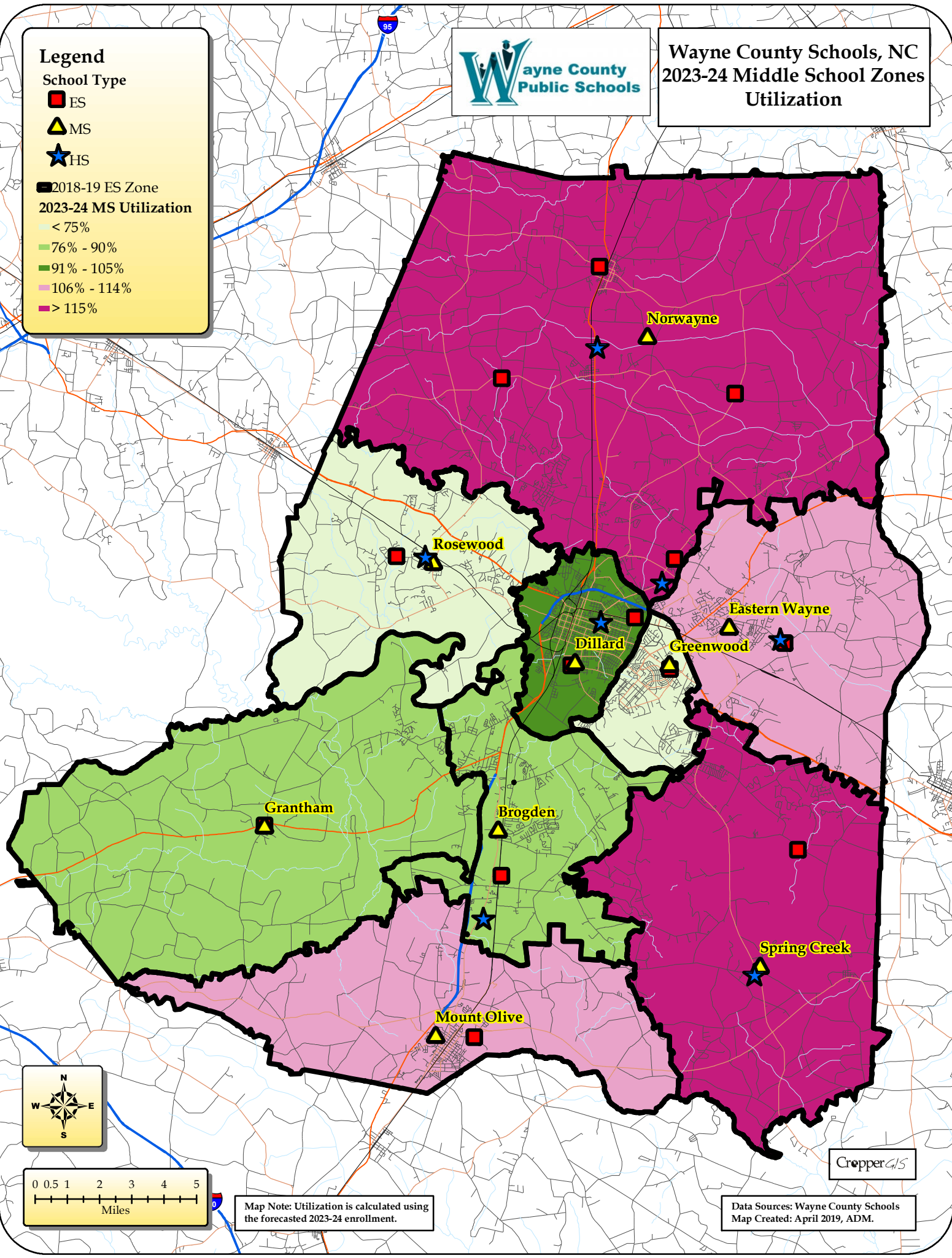
School Type

- ES (Red square)
- MS (Yellow triangle)
- HS (Blue star)

2018-19 ES Zone

2023-24 MS Utilization

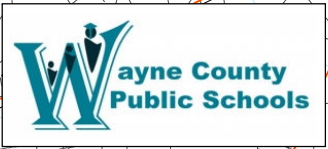
- < 75% (Lightest green)
- 76% - 90% (Light green)
- 91% - 105% (Medium green)
- 106% - 114% (Light purple)
- > 115% (Dark purple)



Map Note: Utilization is calculated using the forecasted 2023-24 enrollment.

Data Sources: Wayne County Schools
Map Created: April 2019, ADM.

CropperGIS



Wayne County Schools, NC 2028-29 Middle School Zones Utilization

Legend

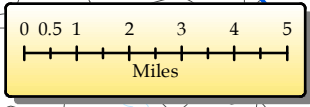
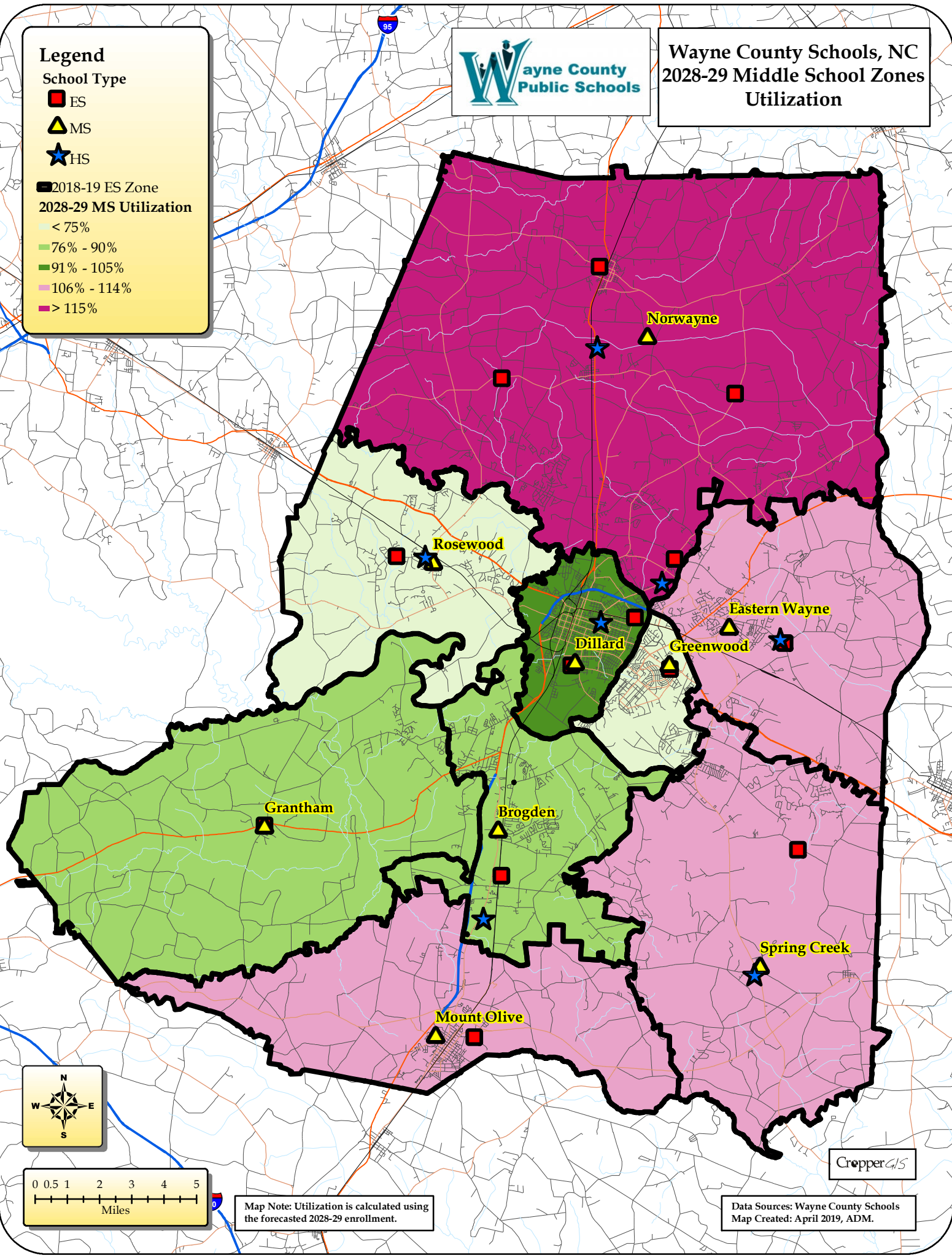
School Type

- ES
- ▲ MS
- ★ HS

2018-19 ES Zone

2028-29 MS Utilization

- < 75%
- 76% - 90%
- 91% - 105%
- 106% - 114%
- > 115%



Map Note: Utilization is calculated using the forecasted 2028-29 enrollment.

Data Sources: Wayne County Schools
Map Created: April 2019, ADM.

CropperGIS

Legend

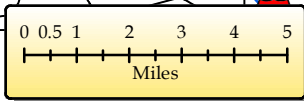
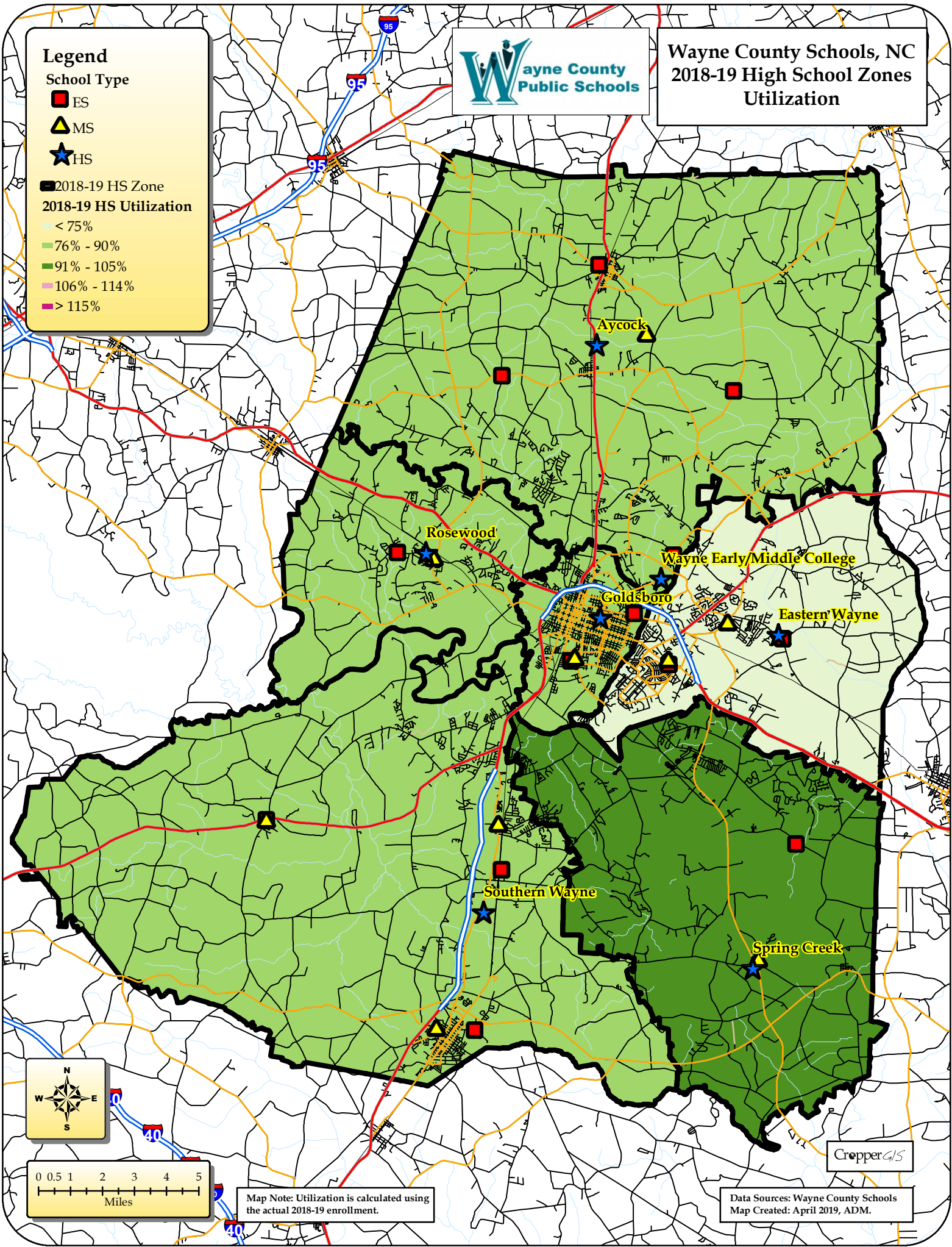
School Type

- ES (Red square)
- MS (Yellow triangle)
- HS (Blue star)

2018-19 HS Zone

2018-19 HS Utilization

- < 75% (Lightest green)
- 76% - 90% (Light green)
- 91% - 105% (Medium green)
- 106% - 114% (Dark green)
- > 115% (Darkest green)



Map Note: Utilization is calculated using the actual 2018-19 enrollment.

Data Sources: Wayne County Schools
Map Created: April 2019, ADM.



Wayne County Schools, NC 2023-24 High School Zones Utilization

Legend

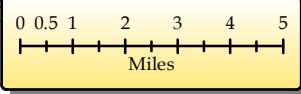
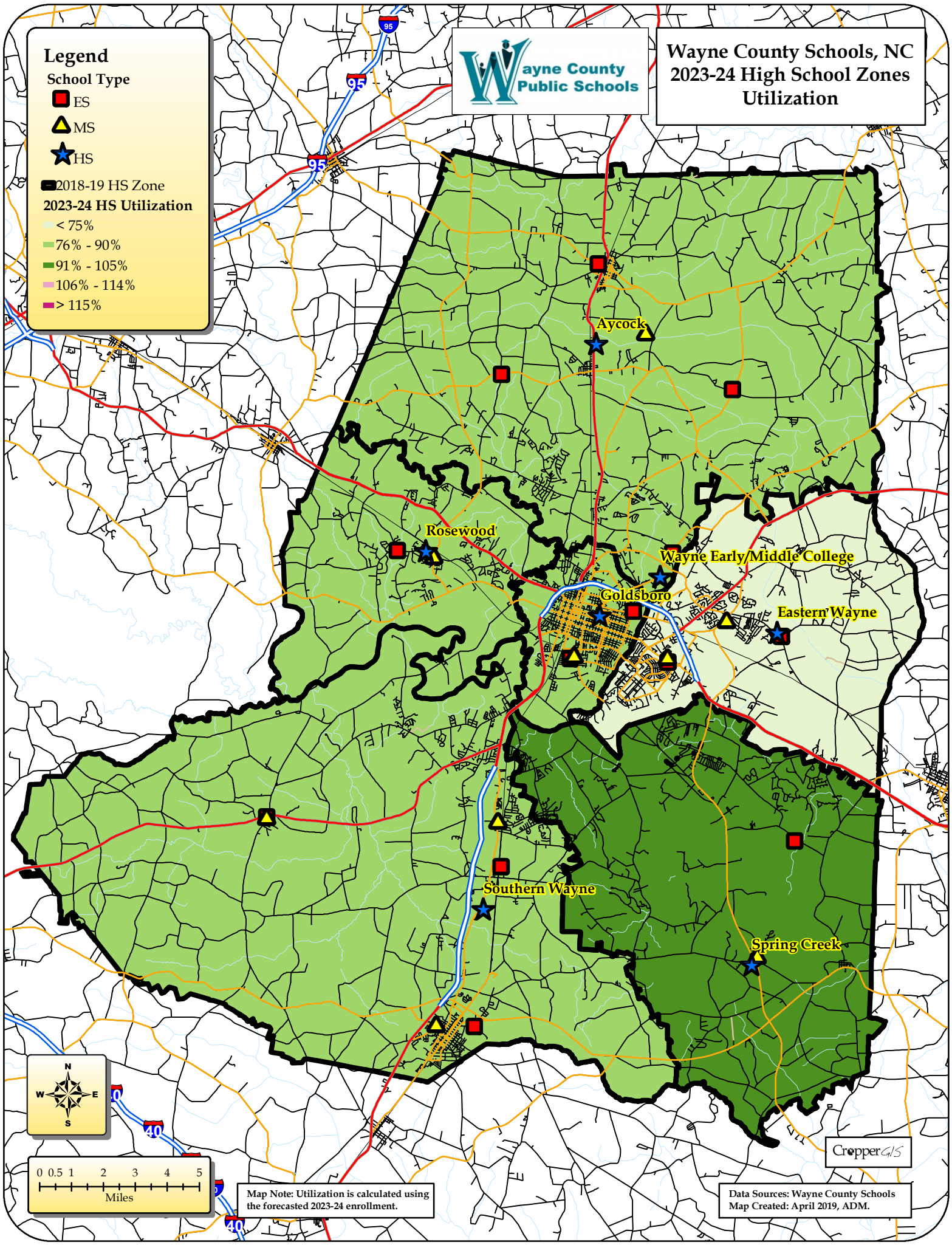
School Type

- ES (Red square)
- MS (Yellow triangle)
- HS (Blue star)

2018-19 HS Zone

2023-24 HS Utilization

- < 75% (Lightest green)
- 76% - 90% (Light green)
- 91% - 105% (Medium green)
- 106% - 114% (Dark green)
- > 115% (Darkest green)



Map Note: Utilization is calculated using the forecasted 2023-24 enrollment.

Data Sources: Wayne County Schools
Map Created: April 2019, ADM.

CropperGIS

Legend

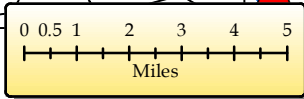
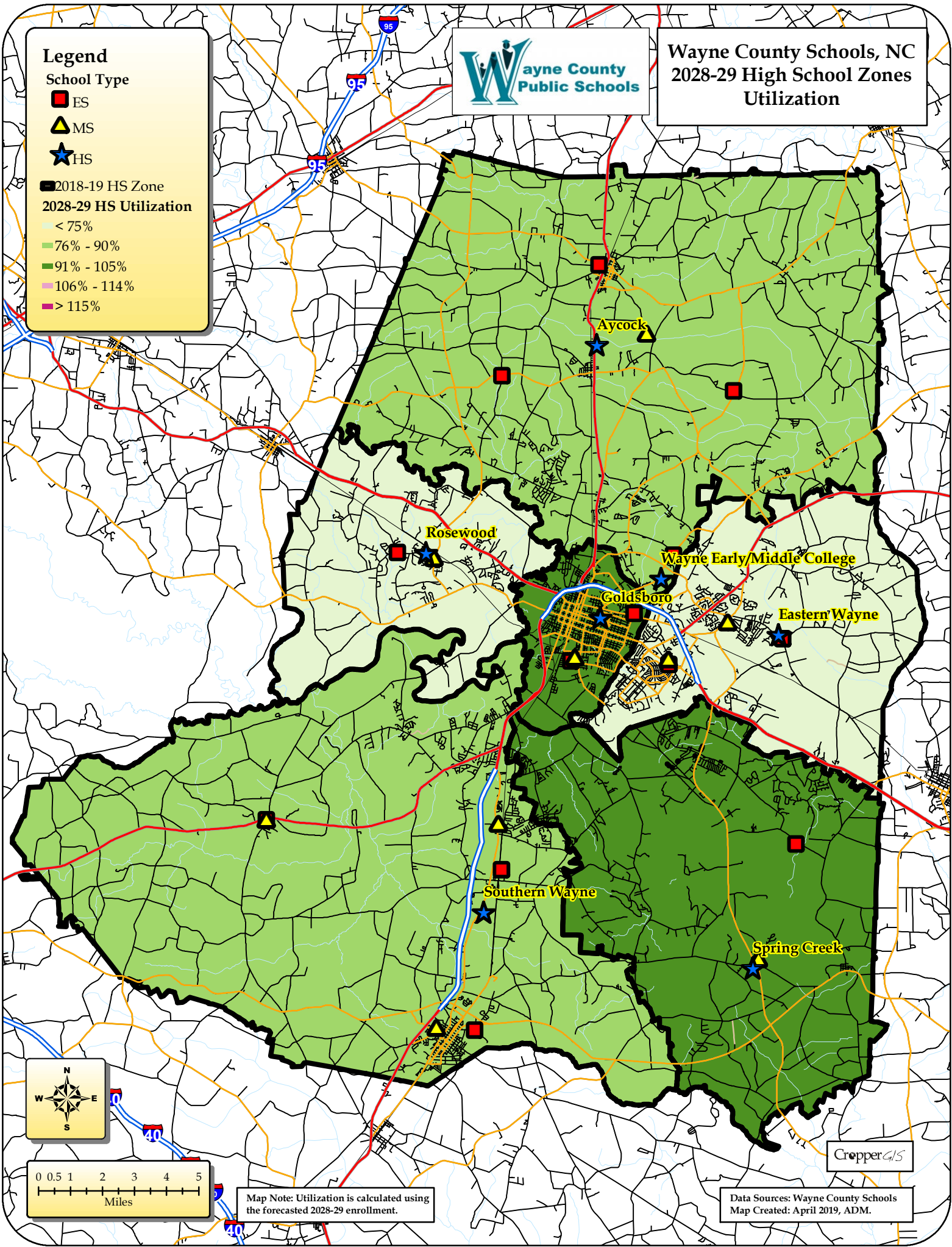
School Type

- ES (Red square)
- MS (Yellow triangle)
- HS (Blue star)

2018-19 HS Zone

2028-29 HS Utilization

- < 75% (Lightest green)
- 76% - 90% (Light green)
- 91% - 105% (Medium green)
- 106% - 114% (Dark green)
- > 115% (Darkest green)



Map Note: Utilization is calculated using the forecasted 2028-29 enrollment.

Data Sources: Wayne County Schools
Map Created: April 2019, ADM.