



-Committee Meeting 2-

Realignment Study 2020

July 8, 2019

CropperGIS



Welcome and Introductions



Meeting Objectives

1. To follow-up with new information and answer questions regarding the project
2. To review DRAFT options 3 and 4 and updated handouts/maps
3. Committee review of options as a group, and determine if a hybrid option should be created



Why We're Here

1. Wayne County Public Schools (WCPS) are reconstructing Meadow Lane Elementary School:
 - a) Meadow Lane Elementary School will have a 700 student capacity
2. Maximize efficient use of existing classroom space, especially at the elementary level, in light of the k-3 class size reduction mandate.
3. These factors necessitate a comprehensive look at attendance boundaries.
4. The implementation of these boundary changes are expected to take effect the Fall 2020 (2020-21) School Year.



Realignment Criteria

Rules to Follow

The Wayne County Public Schools has a set of criteria to follow when evaluating elementary school realignment options. These are rules to follow when considering any potential attendance zone adjustment.

The realignment committee will be oriented on these criteria and will follow them as best as possible as they consider realignment options.



- **Balance school facility utilization**
 - Make every effort to have equitable utilization (where possible) across the district and in accordance with school capacities and funded allotment ratios in accordance with state law. Make efficient use of available space.
- **Account for future growth**
 - Allow for increasing attendance in high growth areas.
- **Close Proximity**
 - Students should be assigned to the school within the closest proximity to their homes where possible.
- **Establish clear feeder patterns and continuity**
 - Make every effort to establish a clear feeder pattern system (especially from middle school to high school), although it may be necessary to split an elementary school to feed to two or more middle schools. Make every effort to divide a large enough population so students can continue to the next level with familiar faces.



Realignment Criteria

Rules to Follow

- **Allow for highest-grade at current school grandfathering**
 - Allow for students who will be in the exit grade in the first school year of realignment to stay at their current school, however, transportation will not be provided for these students.
- **Minimize impact on students**
 - Attempt to minimize the amount of students impacted when making boundary adjustments.
- **Consider economic, cultural, and ethnic diversity**
 - Ensure schools are inclusionary, diverse, and not adversely affected by realignment decisions.
- **Make every effort to establish contiguous zones**
 - Avoid creating zones that are not connected to the primary attendance zone, where possible.



Realignment Criteria

Rules to Follow

- **Maximize busing efficiencies in transportation of students**

- Make every effort to account for transportation (school bus and car rider), parent commuting patterns, balance busing travel time, and costs.



- **Use major roads and natural boundaries wherever feasible to define attendance zones**

- Minimize the amount of students who need to cross major intersections and other barriers to maximize the safety and security of students, and optimize transportation efficiency by containing bus routes within natural boundaries wherever possible to avoid traffic delays and late arrivals.



Review of Timeline

Process & Timeline for Realignment Study									
	March '19	April '19	May '19	June '19	July '19	Aug. '19	Sept. '19	Oct. '19	Nov. '19
<i>Data Collection</i>									
<i>Data Analysis / Assimilation</i>									
<i>Internal Logistics Planning with district</i>									
<i>Grade Cohort Adjustment Feasibility Testing</i>									
<i>Background Report Development</i>									
<i>Baseline Options Development</i>									
<i>Public Information Session #1: Present Project Process, Criteria, Timeline, and Realignment Objectives to Community. Information meeting to public, without public comments.</i>				6/18					
<i>Planning Team Meeting 1</i> <i>- Review Background Data, Introduce Baseline Options</i>				6/19					
<i>Planning Team Meeting 2</i> <i>- Discuss Background Data & Baseline Options, Q&A</i>					7/8				
<i>Planning Team Meeting 3</i> <i>- Options Development, Prepare for Public Information Session #2</i>						8/1			
<i>Public Information Session #2: Present Preliminary Realignment Options to Community for Comment/Feedback</i>						8/19			
<i>Planning Team Meeting 4</i> <i>- Review public input, modify options</i>							9/16		
<i>Planning Team Meeting 5</i> <i>- Finalize Recommendations & Prepare for Board Presentation</i>								10/14	
<i>Presentation of Final Recommendations to the Board of Education</i>									11/25

We are here





Updates Since Last Meeting

There was an error in the race statistics in Meeting 1 materials.

- The online materials were updated immediately after the meeting, and updated materials are provided this evening for you to swap the corrected data.

There have been 13 comments received on the general feedback form:

- Comments about looking at ways to better diversify schools
- Concerns about existing overcrowding.
- Questions about if we are considering special programs at Edgewood.
- Suggestions to create separate K-4/K-5 schools for Carver Heights/North Drive and zone students from Tommy's Road
- Questions about aligning all of district as K-5
- Comments about cleaning up Grantham and Carver areas to send closer to homes (PB 156, 162, 73).



Updates Since Last Meeting

Follow-up to Meeting 1 Questions

- Can you provide more details regarding the use of mobile classrooms at the schools, and how they are used?
 - A mobile classroom inventory per school has been provided to the committee for this evening's meeting.
- Can you look to develop realignment options that make more of an effort to increase the diversity of the city schools?
 - Options 3 and 4 have been created based on committee input.
 - Both options have the preferred configuration for the 3 northern ES (per committee discussion).
 - Option 3 rezones more area between Meadow Lane and Carver Heights/North Drive, and the same lines follow for MS and HS
 - Option 4 maps are more aggressive, and pair Meadow Lane (K-1) / Carver Heights (2-3) / North Drive (4-5) together.
 - Tommy's Road splits to Dillard MS and Greenwood MS
 - Dillard and Greenwood split between Goldsboro HS and Eastern Wayne HS



Review of DRAFT Options

Remember that everything is considered
DRAFT!

- Nothing is written in stone
- Existing DRAFT options are subject to change
- New options can/will be created

Focus isn't on picking the best solution YET, but to openly explore the various options to present to the public for feedback



Review of DRAFT Options

DRAFT options are presented to you this evening

- Committee has 8.5x11 maps, as well as plots of maps for review
- Option maps are now available on interactive map (www.croppermap.com/waynecounty)
- Copies of the handouts, including small and large format maps are now posted on WCPS realignment webpage.



Review of DRAFT Options

When analyzing boundary options, it is best to look at the information in two different ways:

- Study the geography i.e. shape of the current and option zone lines
 - Look at where the lines shift away from the current vs. the option
 - Look at road networks and envision how school busses and parents would travel to school
- Study the tables
 - Review the balance of enrollment, and identify any imbalances that may exist
 - Question why there may be imbalances, and examine possible ways to provide better balance



Wayne County Public Schools, NC Elementary School Zones DRAFT Option 3



Legend

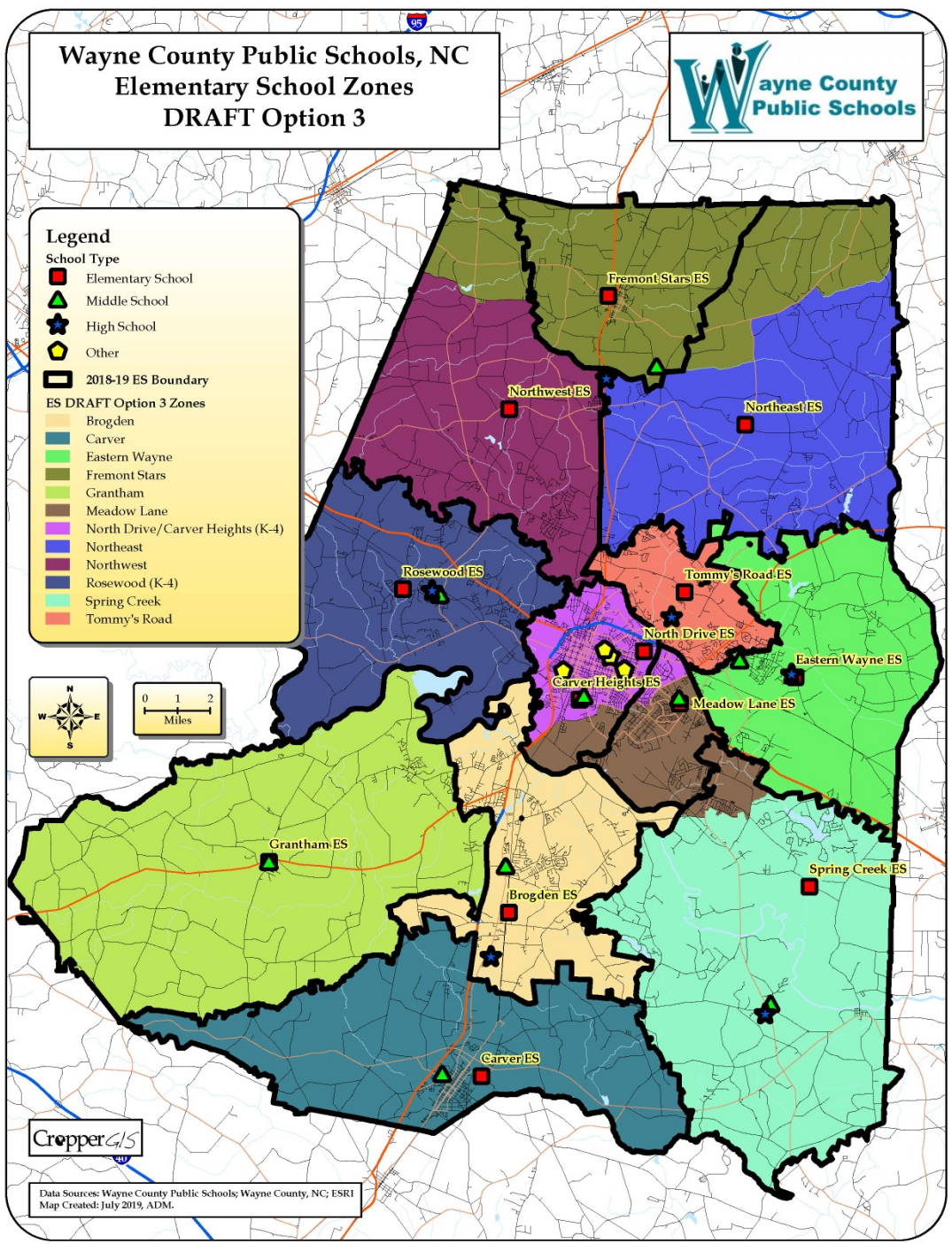
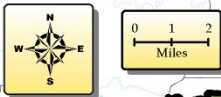
School Type

- Elementary School (Red square)
- Middle School (Green triangle)
- High School (Blue star)
- Other (Yellow pentagon)

2018-19 ES Boundary

ES DRAFT Option 3 Zones

- Brogden (Light orange)
- Carver (Dark blue)
- Eastern Wayne (Light green)
- Fremont Stars (Olive green)
- Grantham (Light green)
- Meadow Lane (Brown)
- North Drive/Carver Heights (K-4) (Purple)
- Northeast (Blue)
- Northwest (Dark purple)
- Rosewood (K-4) (Dark blue)
- Spring Creek (Light green)
- Tommy's Road (Red)



Data Source: Wayne County Public Schools; Wayne County, NC; ESRI
Map Created: July 2019, ADM.



Wayne County Public Schools, NC Elementary School Zones DRAFT Option 4



Legend

School Type

- Elementary School (Red square)
- Middle School (Green triangle)
- High School (Blue star)
- Other (Yellow pentagon)

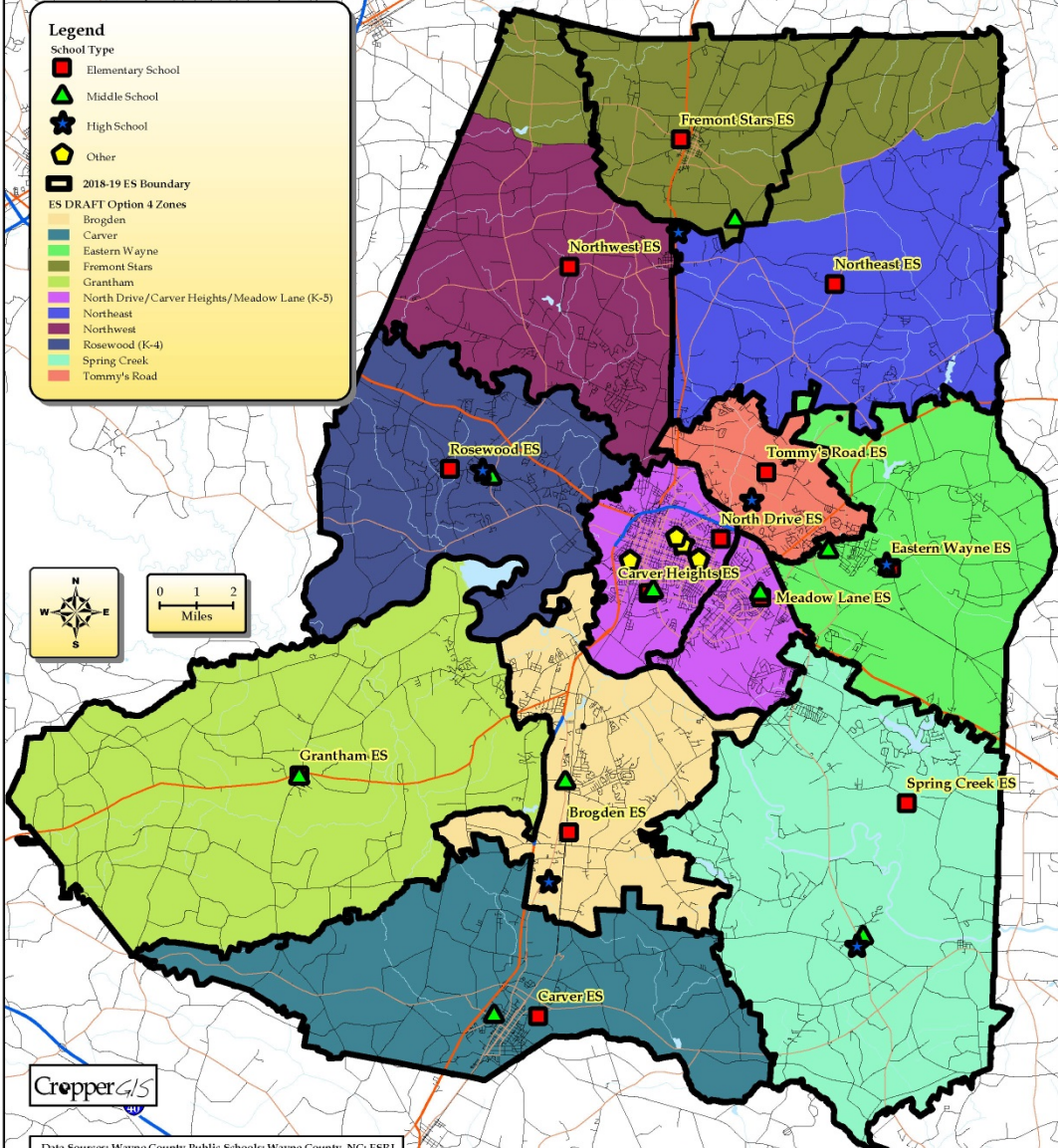
2018-19 ES Boundary (Thick black line)

ES DRAFT Option 4 Zones

- Brogden (Light blue)
- Carver (Dark blue)
- Eastern Wayne (Light green)
- Fremont Stars (Olive green)
- Grantham (Light yellow-green)
- North Drive/Carver Heights/Meadow Lane (K-5) (Purple)
- Northwest (Dark purple)
- Rosewood (K-4) (Dark blue)
- Spring Creek (Light green)
- Tommy's Road (Red-orange)



Data Sources: Wayne County Public Schools; Wayne County, NC; ESRI
Map Created: July 2019, ADM.





Elementary School	Grade Config	Option 2/3 Grade Config	Option 4 Grade Config	2018-19 Capacity	Total Enrolled	DRAFT Option 1 Estimated Enrollment	DRAFT Option 2 Estimated Enrollment	DRAFT Option 3 Estimated Enrollment	DRAFT Option 4 Estimated Enrollment
Brogden Primary School	K-4	K-4	K-4	750	789	789	729	789	789
Carver Elementary School	K-4	K-4	K-4	518	563	563	563	563	563
Carver Heights Elementary School	3-5	2-4	2-3	586	450	465	503	489	570
Eastern Wayne Elementary School	K-5	K-5	K-5	617	664	664	664	664	664
Fremont Elementary School	K-5	K-5	K-5	308	246	333	315	336	336
Grantham Elementary School	K-4	K-4	K-4	396	445	445	424	445	445
Meadowlane Elementary School	K-4	K-4	K-1	723	561	658	658	707	643
North Drive Elementary School	K-2	K-1	4-5	498	597	619	403	368	477
Northeast Elementary School	K-5	K-5	K-5	585	685	632	630	630	630
Northwest Elementary School	K-5	K-5	K-5	667	752	718	738	717	717
Rosewood Elementary School	K-5	K-4	K-4	590	635	635	595	514	514
Spring Creek Elementary School	K-4	K-4	K-4	726	831	734	734	734	831
Tommy's Road Elementary School	K-5	K-5	K-5	603	673	636	673	673	673
Total				7567	7891	7891	7629	7629	7852

Elementary School	Grade Config	Option 2/3 Grade Config	Option 4 Grade Config	2018-19 Capacity	Enrolled Utilization	DRAFT Option 1 Utilization	DRAFT Option 2 Utilization	DRAFT Option 3 Utilization	DRAFT Option 4 Utilization
Brogden Primary School	K-4	K-4	K-4	750	105%	105%	97%	105%	105%
Carver Elementary School	K-4	K-4	K-4	518	109%	109%	109%	109%	109%
Carver Heights Elementary School	3-5	2-4	2-3	586	77%	79%	86%	83%	97%
Eastern Wayne Elementary School	K-5	K-5	K-5	617	108%	108%	108%	108%	108%
Fremont Elementary School	K-5	K-5	K-5	308	80%	108%	102%	109%	109%
Grantham Elementary School	K-4	K-4	K-4	396	112%	112%	107%	112%	112%
Meadowlane Elementary School	K-4	K-4	K-1	723	78%	91%	91%	98%	89%
North Drive Elementary School	K-2	K-1	4-5	498	120%	124%	81%	74%	96%
Northeast Elementary School	K-5	K-5	K-5	585	117%	108%	108%	108%	108%
Northwest Elementary School	K-5	K-5	K-5	667	113%	108%	111%	107%	107%
Rosewood Elementary School	K-5	K-4	K-4	590	108%	108%	101%	87%	87%
Spring Creek Elementary School	K-4	K-4	K-4	726	114%	101%	101%	101%	114%
Tommy's Road Elementary School	K-5	K-5	K-5	603	112%	105%	112%	112%	112%
Total				7567	104%	104%	101%	101%	104%



Review of DRAFT Options

Elementary School	Enrolled				
	Percent Black	Percent White	Percent Other	Percent Non-Hispanic	Percent Hispanic
Brogden Primary School	34.3%	10.4%	55.3%	46.8%	53.2%
Carver Elementary School	40.5%	18.8%	40.7%	62.3%	37.7%
Carver Heights Elementary School	91.3%	3.1%	5.6%	96.2%	3.8%
Eastern Wayne Elementary School	45.2%	26.8%	28.0%	77.9%	22.1%
Fremont Elementary School	19.1%	59.8%	21.1%	85.8%	14.2%
Grantham Elementary School	18.7%	54.8%	26.5%	76.0%	24.0%
Meadowlane Elementary School	36.0%	34.8%	29.2%	83.6%	16.4%
North Drive Elementary School	88.4%	3.2%	8.4%	94.3%	5.7%
Northeast Elementary School	22.3%	54.3%	23.4%	85.5%	14.5%
Northwest Elementary School	20.1%	62.0%	18.0%	88.7%	11.3%
Rosewood Elementary School	10.9%	65.2%	23.9%	86.3%	13.7%
Spring Creek Elementary School	10.7%	27.7%	61.6%	40.6%	59.4%
Tommy's Road Elementary School	48.3%	31.9%	19.8%	89.5%	10.5%
Total	36.2%	34.0%	29.8%	75.9%	24.1%

Student counts are based on the 10/08/2019 WCPS student database.

Elementary School	Option 3				
	Percent Black	Percent White	Percent Other	Percent Non-Hispanic	Percent Hispanic
Brogden Primary School	34.3%	10.4%	55.3%	46.8%	53.2%
Carver Elementary School	40.5%	18.8%	40.7%	62.3%	37.7%
Carver Heights Elementary School	85.3%	5.9%	8.8%	94.7%	5.3%
Eastern Wayne Elementary School	45.2%	26.8%	28.0%	77.9%	22.1%
Fremont Elementary School	23.2%	57.4%	19.3%	86.0%	14.0%
Grantham Elementary School	18.7%	54.8%	26.5%	76.0%	24.0%
Meadowlane Elementary School	43.6%	28.7%	27.7%	80.5%	19.5%
North Drive Elementary School	85.3%	4.1%	10.6%	94.8%	5.2%
Northeast Elementary School	20.3%	55.7%	24.0%	85.7%	14.3%
Northwest Elementary School	20.2%	61.5%	18.3%	88.6%	11.4%
Rosewood Elementary School	10.5%	65.0%	24.5%	85.8%	14.2%
Spring Creek Elementary School	8.9%	27.9%	63.2%	39.0%	61.0%
Tommy's Road Elementary School	48.3%	31.9%	19.8%	89.5%	10.5%
Total	35.6%	34.0%	30.4%	75.4%	24.6%

Elementary School	Option 4				
	Percent Black	Percent White	Percent Other	Percent Non-Hispanic	Percent Hispanic
Brogden Primary School	34.3%	10.4%	55.3%	46.8%	53.2%
Carver Elementary School	40.5%	18.8%	40.7%	62.3%	37.7%
Carver Heights Elementary School	69.3%	14.6%	16.1%	89.8%	10.2%
Eastern Wayne Elementary School	45.2%	26.8%	28.0%	77.9%	22.1%
Fremont Elementary School	23.2%	57.4%	19.3%	86.0%	14.0%
Grantham Elementary School	18.7%	54.8%	26.5%	76.0%	24.0%
Meadowlane Elementary School	66.9%	16.5%	16.6%	90.7%	9.3%
North Drive Elementary School	74.6%	13.4%	11.9%	92.7%	7.3%
Northeast Elementary School	20.3%	55.7%	24.0%	85.7%	14.3%
Northwest Elementary School	20.2%	61.5%	18.3%	88.6%	11.4%
Rosewood Elementary School	10.5%	65.0%	24.5%	85.8%	14.2%
Spring Creek Elementary School	10.7%	27.7%	61.6%	40.6%	59.4%
Tommy's Road Elementary School	48.3%	31.9%	19.8%	89.5%	10.5%
Total	36.7%	33.5%	29.8%	75.9%	24.1%



Review of DRAFT Options

Option	Total K-5th Live-In Students Impacted
Option 1	221
Option 2	501
Option 3	659
Option 4	281

The Impact of Option 2 also includes 254 5th grade students from Rosewood ES and Carver Heights ES that will change from Elementary School to Middle School

The Impact of Option 3 also includes 247 5th grade students from Rosewood ES and Carver Heights ES that will change from Elementary School to Middle School

The Impact of Option 4 also includes 73 5th grade students from Meadowlane ES change from Middle School to Elementary School, and 118 students from Rosewood ES that will change from Elementary School to Middle School

ES Zone 2019-20	DRAFT Option 3 ES Zone	Total Grade Config Live and Attend In Students
Brogden	Brogden	769
Carver	Carver	549
Eastern Wayne	Eastern Wayne	596
Fremont Stars	Fremont Stars	174
Grantham	Grantham	421
Meadow Lane	Meadow Lane	373
Meadow Lane	North Drive/Carver Heights (K-4)	88
North Drive/Carver Heights	Meadow Lane	137
North Drive/Carver Heights	North Drive/Carver Heights (K-4)	755
Northeast	Fremont Stars	55
Northeast	Northeast	590
Northwest	Fremont Stars	35
Northwest	Northwest	689
Rosewood	Rosewood (K-4)	474
Spring Creek	Meadow Lane	97
Spring Creek	Spring Creek	685
Tommy's Road	Tommy's Road	519

ES Zone 2019-20	DRAFT Option 4 ES Zone	Total Grade Config Live and Attend In Students
Brogden	Brogden	769
Carver	Carver	549
Eastern Wayne	Eastern Wayne	596
Fremont Stars	Fremont Stars	174
Grantham	Grantham	421
Meadow Lane	North Drive/Carver Heights/Meadow Lane	534
North Drive/Carver Heights	North Drive/Carver Heights/Meadow Lane	1028
Northeast	Fremont Stars	55
Northeast	Northeast	590
Northwest	Fremont Stars	35
Northwest	Northwest	689
Rosewood	Rosewood (K-4)	474
Spring Creek	Spring Creek	782
Tommy's Road	Tommy's Road	519



Review of DRAFT Options

2018-19 ES Zone	2018-19 MS Zone	Total K-5th Live and Attend-In	ES Attendance
Brogden	Brogden	960	100%
Carver	Grantham	1	0%
Carver	Mount Olive	646	100%
Eastern Wayne	Eastern Wayne	596	100%
Fremont Stars	Norwayne	174	100%
Grantham	Grantham	524	100%
Meadow Lane	Greenwood	534	100%
North Drive/Carver Heights	Dillard	1028	100%
Northeast	Norwayne	645	100%
Northwest	Norwayne	724	100%
Rosewood	Rosewood	592	100%
Spring Creek	Greenwood	5	1%
Spring Creek	Spring Creek	923	99%
Tommy's Road	Eastern Wayne	337	65%
Tommy's Road	Norwayne	182	35%

DRAFT Option 3 ES	DRAFT Option 3 MS	Total K-5th Live and Attend-In	ES Attendance
Brogden	Brogden	960	100%
Carver	Mount Olive	647	100%
Eastern Wayne	Eastern Wayne	596	100%
Fremont Stars	Norwayne	264	100%
Grantham	Grantham	524	100%
Meadow Lane	Greenwood	691	100%
North Drive/Carver Heights (K-4)	Dillard (5-8)	989	100%
Northeast	Norwayne	590	100%
Northwest	Norwayne	689	100%
Rosewood (K-4)	Rosewood (5-8)	592	100%
Spring Creek	Spring Creek	810	100%
Tommy's Road	Eastern Wayne	337	65%
Tommy's Road	Norwayne	182	35%

DRAFT Option 4 ES	DRAFT Option 4 MS	Total K-5th Live and Attend-In	ES Attendance
Brogden	Brogden	960	100%
Carver	Mount Olive	647	100%
Eastern Wayne	Eastern Wayne	596	100%
Fremont Stars	Norwayne	264	100%
Grantham	Grantham	524	100%
North Drive/Carver Heights/Meadow Lane	Dillard	1028	66%
North Drive/Carver Heights/Meadow Lane	Greenwood	534	34%
Northeast	Norwayne	590	100%
Northwest	Norwayne	689	100%
Rosewood (K-4)	Rosewood (5-8)	592	100%
Spring Creek	Spring Creek	928	100%
Tommy's Road	Dillard	182	35%
Tommy's Road	Greenwood	337	65%



Wayne County Public Schools, NC Middle School Zones DRAFT Option 3



Legend

School Type

- Elementary School
- Middle School
- High School
- Other

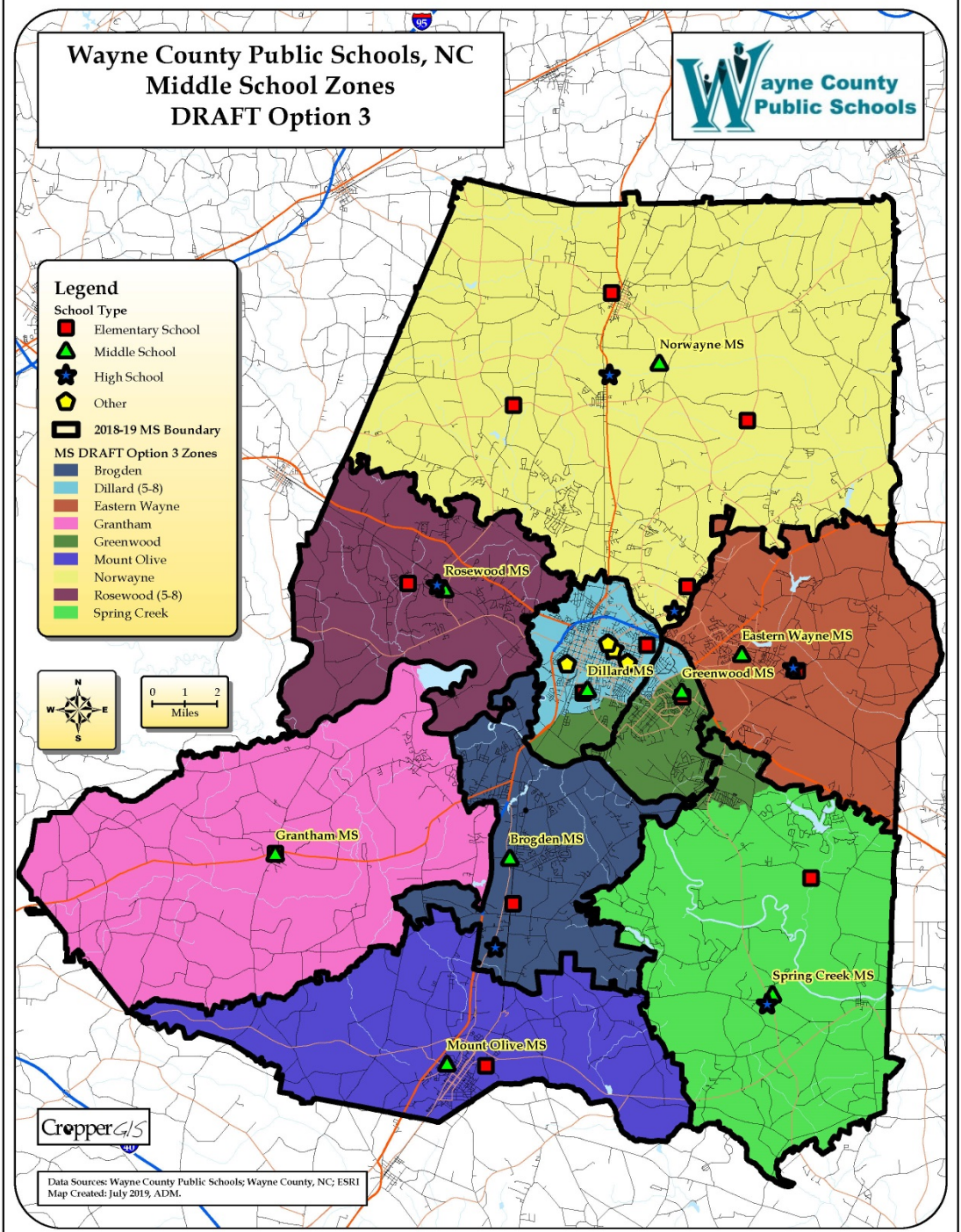
2018-19 MS Boundary

MS DRAFT Option 3 Zones

- Brogden
- Dillard (5-8)
- Eastern Wayne
- Grantham
- Greenwood
- Mount Olive
- Norwayne
- Rosewood (5-8)
- Spring Creek



Data Source: Wayne County Public Schools; Wayne County, NC; ESRI
Map Created: July 2019, ADM.





Wayne County Public Schools, NC Middle School Zones DRAFT Option 4



Legend

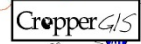
School Type

- Elementary School
- Middle School
- High School
- Other

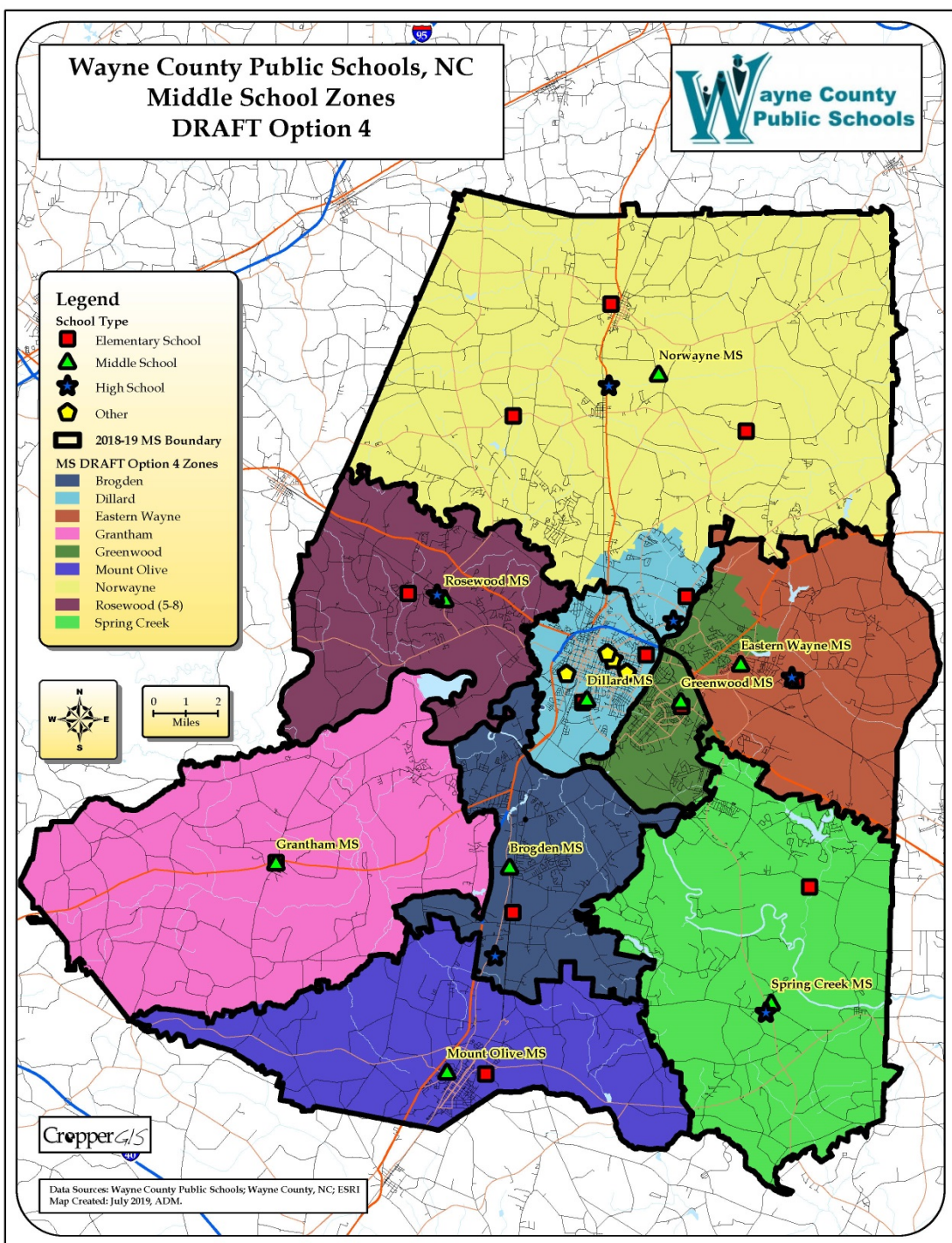
2018-19 MS Boundary

MS DRAFT Option 4 Zones

- Brogden
- Dillard
- Eastern Wayne
- Grantham
- Greenwood
- Mount Olive
- Norwayne
- Rosewood (5-8)
- Spring Creek



Data Source: Wayne County Public Schools; Wayne County, NC; ESRI
Map Created: July 2019, ADM.





Middle School	Grade Config	Option 2/3 Grade Config	Option 4 Grade Config	2018-19 Capacity	Total Enrolled	DRAFT Option 1 Estimated Enrollment	DRAFT Option 2 Estimated Enrollment	DRAFT Option 3 Estimated Enrollment	DRAFT Option 4 Estimated Enrollment
Brogden Middle School	5-8	5-8	5-8	672	570	570	532	570	570
Dillard Middle School	6-8	5-8	6-8	501	366	380	417	519	424
Eastern Wayne Middle School	6-8	6-8	6-8	498	537	537	537	537	389
Grantham Middle School	5-8	5-8	5-8	423	394	392	374	392	392
Greenwood Middle School	5-8	5-8	6-8	563	392	466	556	454	458
Mount Olive Middle School	5-8	5-8	5-8	387	386	388	388	388	388
Norwayne Middle School	6-8	6-8	6-8	781	887	873	887	887	829
Rosewood Middle School	6-8	5-8	5-8	433	333	333	510	454	454
Spring Creek Middle School	5-8	5-8	5-8	564	660	586	586	586	660
Total				4822	4525	4525	4787	4787	4564

Middle School	Grade Config	Option 2/3 Grade Config	Option 4 Grade Config	2018-19 Capacity	Enrolled Utilization	DRAFT Option 1 Utilization	DRAFT Option 2 Utilization	DRAFT Option 3 Utilization	DRAFT Option 4 Utilization
Brogden Middle School	5-8	5-8	5-8	672	85%	85%	79%	85%	85%
Dillard Middle School	6-8	5-8	6-8	501	73%	76%	83%	104%	85%
Eastern Wayne Middle School	6-8	6-8	6-8	498	108%	108%	108%	108%	78%
Grantham Middle School	5-8	5-8	5-8	423	93%	93%	88%	93%	93%
Greenwood Middle School	5-8	5-8	6-8	563	70%	83%	99%	81%	81%
Mount Olive Middle School	5-8	5-8	5-8	387	100%	100%	100%	100%	100%
Norwayne Middle School	6-8	6-8	6-8	781	114%	112%	114%	114%	106%
Rosewood Middle School	6-8	5-8	5-8	433	77%	77%	118%	105%	105%
Spring Creek Middle School	5-8	5-8	5-8	564	117%	104%	104%	104%	117%
Total				4822	94%	94%	99%	99%	95%

Student counts are based on the 10/08/2018 WCPS student database.



Review of DRAFT Options

Middle School	Enrolled				
	Percent Black	Percent White	Percent Other	Percent Non-Hispanic	Percent Hispanic
Brogden Middle School	34.7%	11.6%	53.7%	49.1%	50.9%
Dillard Middle School	87.7%	2.2%	10.1%	92.3%	7.7%
Eastern Wayne Middle School	55.9%	24.8%	19.4%	87.7%	12.3%
Grantham Middle School	18.0%	54.8%	27.2%	74.9%	25.1%
Greenwood Middle School	53.6%	21.9%	24.5%	82.4%	17.6%
Mount Olive Middle School	34.7%	23.1%	42.2%	61.4%	38.6%
Norwayne Middle School	22.7%	56.8%	20.5%	87.3%	12.7%
Rosewood Middle School	13.8%	64.6%	21.6%	85.3%	14.7%
Spring Creek Middle School	11.8%	32.6%	55.6%	47.6%	52.4%
Total	34.5%	33.9%	31.7%	73.3%	26.7%

Middle School	Option 3				
	Percent Black	Percent White	Percent Other	Percent Non-Hispanic	Percent Hispanic
Brogden Middle School	34.7%	11.6%	53.7%	48.1%	51.9%
Dillard Middle School	86.5%	4.0%	9.4%	91.7%	8.3%
Eastern Wayne Middle School	55.9%	24.8%	19.4%	76.7%	23.3%
Grantham Middle School	18.1%	54.1%	27.8%	67.6%	32.4%
Greenwood Middle School	49.3%	20.5%	30.2%	55.7%	44.3%
Mount Olive Middle School	34.5%	21.9%	43.6%	56.2%	43.8%
Norwayne Middle School	22.7%	56.5%	20.9%	85.2%	14.8%
Rosewood Middle School	13.4%	64.3%	22.2%	79.1%	20.9%
Spring Creek Middle School	10.6%	33.6%	55.8%	42.2%	57.8%
Total	35.5%	33.4%	31.1%	68.1%	31.9%

Middle School	Option 4				
	Percent Black	Percent White	Percent Other	Percent Non-Hispanic	Percent Hispanic
Brogden Middle School	34.7%	11.6%	53.7%	48.1%	51.9%
Dillard Middle School	79.2%	9.0%	11.8%	91.7%	8.3%
Eastern Wayne Middle School	52.2%	28.3%	19.5%	71.0%	29.0%
Grantham Middle School	18.1%	54.1%	27.8%	67.6%	32.4%
Greenwood Middle School	58.3%	17.9%	23.8%	65.5%	34.5%
Mount Olive Middle School	34.5%	21.9%	43.6%	56.2%	43.8%
Norwayne Middle School	22.4%	56.8%	20.7%	84.9%	15.1%
Rosewood Middle School	13.4%	64.3%	22.2%	79.1%	20.9%
Spring Creek Middle School	11.8%	32.3%	55.9%	42.7%	57.3%
Total	33.6%	34.4%	32.0%	67.2%	32.8%



Review of DRAFT Options

Option	Total Grade Config Live and Attend In Students Impacted
Option 1	90
Option 2	443
Option 3	449
Option 4	281

The Impact of Option 2 also includes 254 5th grade students from Rosewood ES and Carver Heights ES that will change from Elementary School to Middle School

The Impact of Option 3 also includes 247 5th grade students from Rosewood ES and Carver Heights ES that will change from Elementary School to Middle School

The Impact of Option 4 also includes 73 5th grade students from Meadowlane ES change from Middle School to Elementary School, and 118 students from Rosewood ES that will change

MS Zone 2019-20	DRAFT Option 3 MS Zone	Total Grade Config Live and Attend In Students
Brogden	Brogden	562
Dillard	Dillard (5-8)	444
Dillard	Greenwood	57
Eastern Wayne	Eastern Wayne	474
Grantham	Grantham	361
Grantham	Mount Olive	2
Greenwood	Dillard (5-8)	69
Greenwood	Greenwood	201
Mount Olive	Mount Olive	358
Norwayne	Norwayne	867
Rosewood	Rosewood (5-8)	410
Spring Creek	Greenwood	74
Spring Creek	Spring Creek	540

MS Zone 2019-20	DRAFT Option 4 MS Zone	Total Grade Config Live and Attend In Students
Brogden	Brogden	562
Dillard	Dillard	365
Eastern Wayne	Eastern Wayne	326
Eastern Wayne	Greenwood	148
Grantham	Grantham	361
Grantham	Mount Olive	2
Greenwood	Greenwood	197
Mount Olive	Mount Olive	358
Norwayne	Dillard	58
Norwayne	Norwayne	809
Rosewood	Rosewood (5-8)	410
Spring Creek	Spring Creek	614



Review of DRAFT Options

2018-19 MS Zone	2018-19 HS Zone	Total 5-8th Live and Attend-In	MS Attendance
Brogden	Southern Wayne	375	67%
Brogden	Spring Creek	187	33%
Dillard	Goldsboro	501	100%
Eastern Wayne	Eastern Wayne	642	100%
Grantham	Southern Wayne	363	100%
Greenwood	Eastern Wayne	199	74%
Greenwood	Spring Creek	71	26%
Mount Olive	Southern Wayne	358	100%
Norwayne	Aycock	1145	100%
Rosewood	Rosewood	410	100%
Spring Creek	Spring Creek	614	100%

DRAFT Option 3 MS Zone	DRAFT Option 3 HS Zone	Total 5-8th Live and Attend-In	MS Attendance
Brogden	Southern Wayne	375	67%
Brogden	Spring Creek	187	33%
Dillard (5-8)	Goldsboro	513	100%
Eastern Wayne	Eastern Wayne	642	100%
Grantham	Southern Wayne	361	100%
Greenwood	Eastern Wayne	258	78%
Greenwood	Spring Creek	74	22%
Mount Olive	Southern Wayne	360	100%
Norwayne	Aycock	1145	100%
Rosewood (5-8)	Rosewood	410	100%
Spring Creek	Spring Creek	540	100%

DRAFT Option 4 MS Zone	DRAFT Option 4 HS Zone	Total 5-8th Live and Attend-In	MS Attendance
Brogden	Southern Wayne	375	67%
Brogden	Spring Creek	187	33%
Dillard (5-8)	Goldsboro	513	100%
Eastern Wayne	Eastern Wayne	642	100%
Grantham	Southern Wayne	361	100%
Greenwood	Eastern Wayne	258	78%
Greenwood	Spring Creek	74	22%
Mount Olive	Southern Wayne	360	100%
Norwayne	Aycock	1145	100%
Rosewood (5-8)	Rosewood	410	100%
Spring Creek	Spring Creek	540	100%



Wayne County Public Schools, NC High School Zones DRAFT Option 3



Legend

School Type

- Elementary School
- Middle School
- High School
- Other

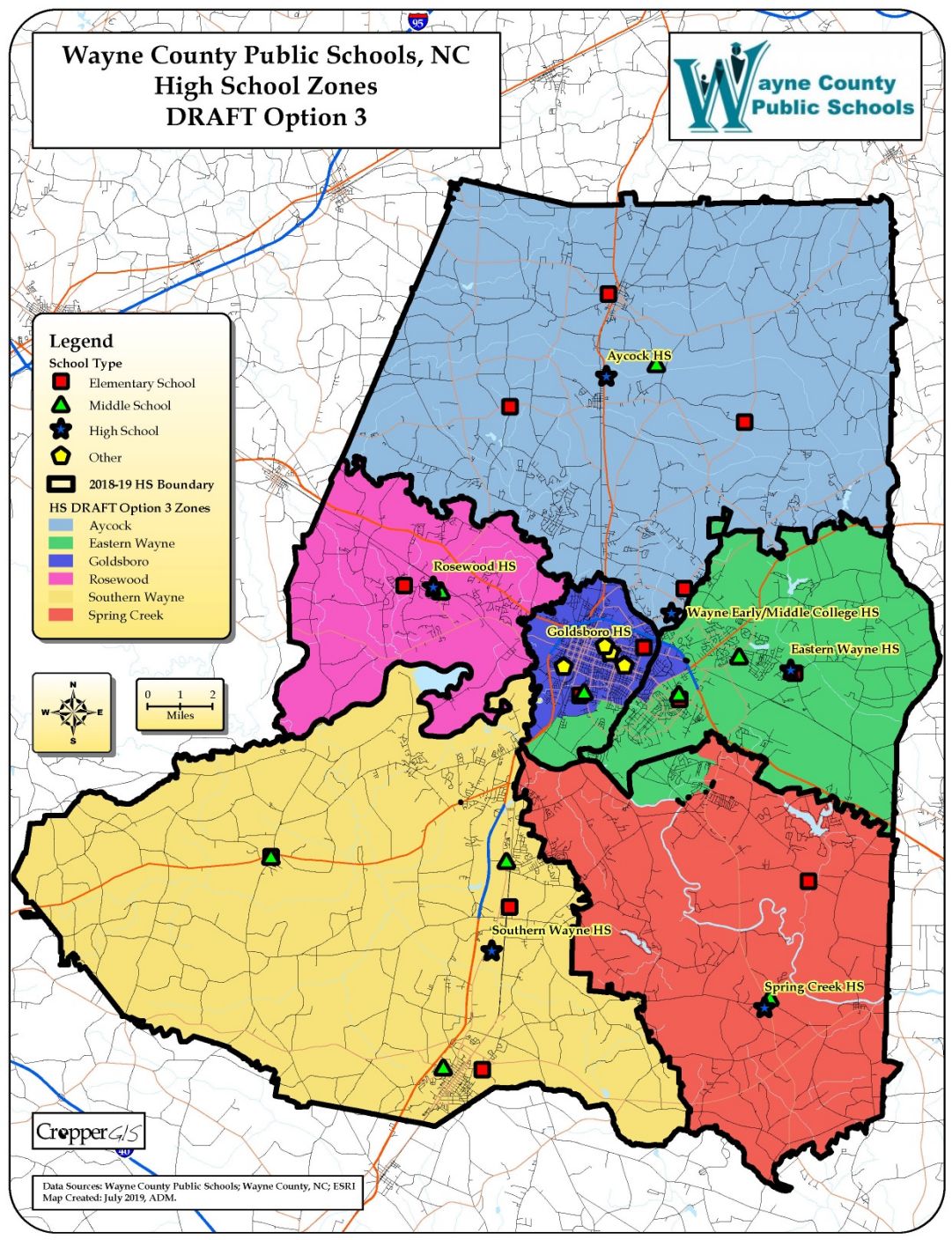
2018-19 HS Boundary

HS DRAFT Option 3 Zones

- Aycock
- Eastern Wayne
- Goldsboro
- Rosewood
- Southern Wayne
- Spring Creek



Data Source: Wayne County Public Schools; Wayne County, NC; ESRI
Map Created: July 2019, ADM.





Wayne County Public Schools, NC High School Zones DRAFT Option 4



Legend

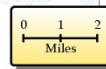
School Type

- Elementary School
- Middle School
- High School
- Other

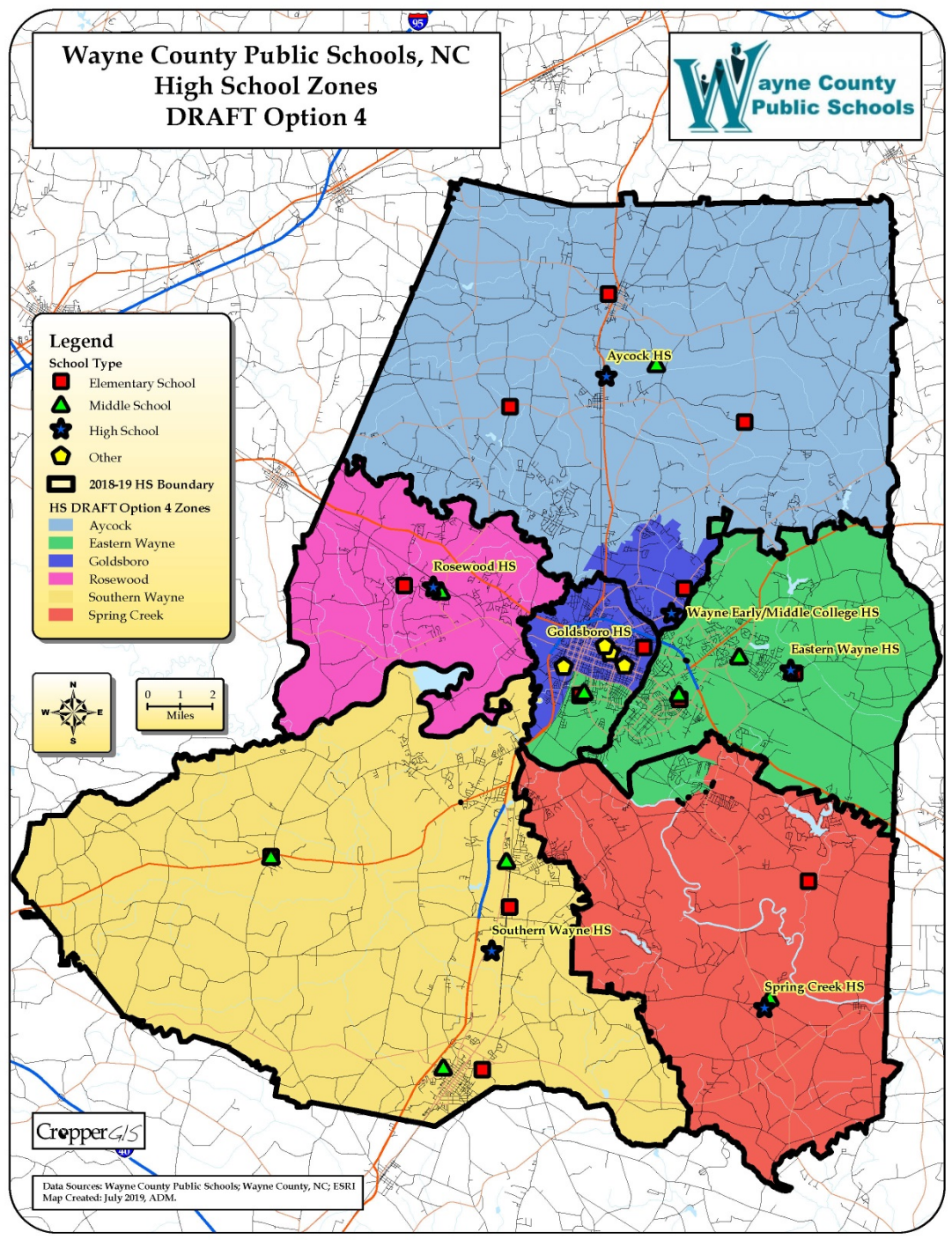
2018-19 HS Boundary

HS DRAFT Option 4 Zones

- Aycock
- Eastern Wayne
- Goldsboro
- Rosewood
- Southern Wayne
- Spring Creek



Data Source: Wayne County Public Schools; Wayne County, NC; ESRI
Map Created: July 2019, ADM.





High School	Grade Config	2018-19 Capacity	Total Enrolled	DRAFT Option 1 Estimated Enrollment	DRAFT Option 2 Estimated Enrollment	DRAFT Option 3 Estimated Enrollment	DRAFT Option 4 Estimated Enrollment
Charles B. Aycock High School	9-12	1296	1164	1139	1164	1164	1087
Eastern Wayne High School	9-12	1403	965	1089	1088	1031	1243
Goldsboro High School	9-12	672	574	599	574	567	432
Rosewood High School	9-12	556	499	499	549	499	499
Southern Wayne High School	9-12	1219	1083	1083	1033	1083	1083
Spring Creek High School	9-12	773	714	590	591	655	655
Total		5919	4999	4999	4999	4999	4999

High School	Grade Config	2018-19 Capacity	Enrolled Utilization	DRAFT Option 1 Utilization	DRAFT Option 2 Utilization	DRAFT Option 3 Utilization	DRAFT Option 4 Utilization
Charles B. Aycock High School	9-12	1296	90%	88%	90%	90%	84%
Eastern Wayne High School	9-12	1403	69%	78%	78%	73%	89%
Goldsboro High School	9-12	672	85%	89%	85%	84%	64%
Rosewood High School	9-12	556	90%	90%	99%	90%	90%
Southern Wayne High School	9-12	1219	89%	89%	85%	89%	89%
Spring Creek High School	9-12	773	92%	76%	76%	85%	85%
Total		5919	84%	84%	84%	84%	84%

Student counts are based on the 10/08/2018 WCPS student database.



Review of DRAFT Options

High School	Enrolled				
	Percent Black	Percent White	Percent Other	Percent Non-Hispanic	Percent Hispanic
Charles B. Aycock High School	21.0%	60.6%	18.4%	88.0%	12.0%
Eastern Wayne High School	52.2%	29.5%	18.2%	86.7%	13.3%
Goldsboro High School	90.1%	3.0%	7.0%	95.3%	4.7%
Rosewood High School	15.2%	64.9%	19.8%	88.2%	11.8%
Southern Wayne High School	35.5%	29.2%	35.4%	68.0%	32.0%
Spring Creek High School	16.2%	30.8%	52.9%	51.7%	48.3%
Total	36.8%	37.3%	25.8%	79.1%	20.9%

High School	Option 3				
	Percent Black	Percent White	Percent Other	Percent Non-Hispanic	Percent Hispanic
Charles B. Aycock High School	21.0%	60.6%	18.4%	88.0%	12.0%
Eastern Wayne High School	53.2%	27.4%	19.4%	85.3%	14.7%
Goldsboro High School	86.1%	5.8%	8.1%	95.1%	4.9%
Rosewood High School	15.2%	64.9%	19.8%	88.2%	11.8%
Southern Wayne High School	35.5%	29.2%	35.4%	68.0%	32.0%
Spring Creek High School	15.4%	31.5%	53.1%	51.1%	48.9%
Total	36.8%	37.3%	25.8%	79.1%	20.9%

High School	Option 4				
	Percent Black	Percent White	Percent Other	Percent Non-Hispanic	Percent Hispanic
Charles B. Aycock High School	20.7%	61.1%	18.2%	87.9%	12.1%
Eastern Wayne High School	58.1%	24.2%	17.7%	87.0%	13.0%
Goldsboro High School	77.3%	13.0%	9.7%	93.8%	6.3%
Rosewood High School	15.2%	64.9%	19.8%	88.2%	11.8%
Southern Wayne High School	35.5%	29.2%	35.4%	68.0%	32.0%
Spring Creek High School	15.4%	31.5%	53.1%	51.1%	48.9%
Total	36.8%	37.3%	25.8%	79.1%	20.9%



Review of DRAFT Options

Option	Total Grade Config Live and Attend In Students Impacted
Option 1	149
Option 2	173
Option 3	190
Option 4	355

HS Zone 2019-20	DRAFT Option 3 HS Zone	Total Grade Config Live and Attend In Students
Aycock	Aycock	1128
Eastern Wayne	Eastern Wayne	742
Eastern Wayne	Goldsboro	62
Goldsboro	Eastern Wayne	69
Goldsboro	Goldsboro	486
Rosewood	Rosewood	425
Southern Wayne	Southern Wayne	1046
Spring Creek	Eastern Wayne	59
Spring Creek	Spring Creek	626

HS Zone 2019-20	DRAFT Option 4 HS Zone	Total Grade Config Live and Attend In Students
Aycock	Aycock	1051
Aycock	Goldsboro	77
Eastern Wayne	Eastern Wayne	804
Goldsboro	Eastern Wayne	219
Goldsboro	Goldsboro	336
Rosewood	Rosewood	425
Southern Wayne	Southern Wayne	1046
Spring Creek	Eastern Wayne	59
Spring Creek	Spring Creek	626



Small Group Exercise

Break into 3 groups

Each group review the options tables and maps.

Think about creating a hybrid. Do you like one area on one option, and another area/concept on another?

Please feel free to note any changes or highlight any part of the map you want to discuss. If you have any notes/comments, please write them directly on the plots.

Once you've had time to evaluate the info, the groups will report to the full committee.



**Next Meeting will be:
August 1, 2019 @ 6pm
WCPS School Board Office**

Same place, same time!