



**-Committee Meeting 3-**

**Realignment Study 2020**

**August 1, 2019**

**CropperGIS**



# *Welcome and Introductions*



# Meeting Objectives

1. To follow-up and answer questions regarding the project
2. To review DRAFT Option 5 and handouts
3. To work to narrow focus to 2 or 3 options for the Public Information Session



# Review of Timeline

Process & Timeline for Realignment Study									
	March '19	April '19	May '19	June '19	July '19	Aug. '19	Sept. '19	Oct. '19	Nov. '19
<i>Data Collection</i>									
<i>Data Analysis / Assimilation</i>									
<i>Internal Logistics Planning with district</i>									
<i>Grade Cohort Adjustment Feasibility Testing</i>									
<i>Background Report Development</i>									
<i>Baseline Options Development</i>									
<i>Public Information Session #1: Present Project Process, Criteria, Timeline, and Realignment Objectives to Community. Information meeting to public, without public comments.</i>				6/18					
<i>Planning Team Meeting 1</i> <i>- Review Background Data, Introduce Baseline Options</i>				6/19					
<i>Planning Team Meeting 2</i> <i>- Discuss Background Data &amp; Baseline Options, Q&amp;A</i>					7/8				
<i>Planning Team Meeting 3</i> <i>- Options Development, Prepare for Public Information Session #2</i>						8/1			
<i>Public Information Session #2: Present Preliminary Realignment Options to Community for Comment/Feedback</i>						8/27			
<i>Planning Team Meeting 4</i> <i>- Review public input, modify options</i>							9/16		
<i>Planning Team Meeting 5</i> <i>- Finalize Recommendations &amp; Prepare for Board Presentation</i>								10/14	
<i>Presentation of Final Recommendations to the Board of Education</i>									11/25

We are here →

**NOTE: PUBLIC INFORMATION SESSION 2 HAS BEEN MOVED TO AUGUST 27, 2019**



# *Updates Since Last Meeting*

## **Follow-up to Meeting 2 Questions**

- Can you provide information to give a better understanding of socio-economic distribution in the county?
  - A map showing ACS income data has been provided, as well as a map of assessed property values from Wayne County property data.
- Option 5 has been developed per committee direction/input:
  - North Drive ES and Tommy's Road ES are paired in this option.
    - K-1st grade students would be at North Drive ES, and 2nd-5th grade students would be Tommy's Road ES.
  - Carver Heights ES and Meadowlane ES are paired in this option.
    - K-1st grade students would be at Carver Heights ES, and 2nd-5th grade students would be Meadowlane ES.
  - Greenwood MS grade configuration changes to 5-8<sup>th</sup>
  - Rosewood ES grade configuration changes to K-4th.
  - Rosewood MS grade configuration changes to 5-8<sup>th</sup>
  - Middle and High School adjustments made to better diversity of Dillard MS and Goldsboro HS.



# Review of DRAFT Options

Remember that everything is considered  
**DRAFT!**

- Nothing is written in stone
- Existing DRAFT options are subject to change
- New options can/will be created

*Focus isn't on picking the best solution YET, but to openly explore the various options to present to the public for feedback*



# Review of DRAFT Options

DRAFT options are presented to you this evening

- Committee has 8.5x11 maps, as well as plots of maps for review
- Option maps are now available on interactive map ([www.croppermap.com/waynecounty](http://www.croppermap.com/waynecounty))
- Copies of the handouts, including small and large format maps are now posted on WCPS realignment webpage.



# Review of DRAFT Options

When analyzing boundary options, it is best to look at the information in two different ways:

- Study the geography i.e. shape of the current and option zone lines
  - Look at where the lines shift away from the current vs. the option
  - Look at road networks and envision how school busses and parents would travel to school
- Study the tables
  - Review the balance of enrollment, and identify any imbalances that may exist
  - Question why there may be imbalances, and examine possible ways to provide better balance





# Wayne County Public Schools, NC Elementary School Zones DRAFT Option 5



**Legend**

**School Type**

- Elementary School (Red square)
- Middle School (Green triangle)
- High School (Blue star)
- Other (Yellow pentagon)

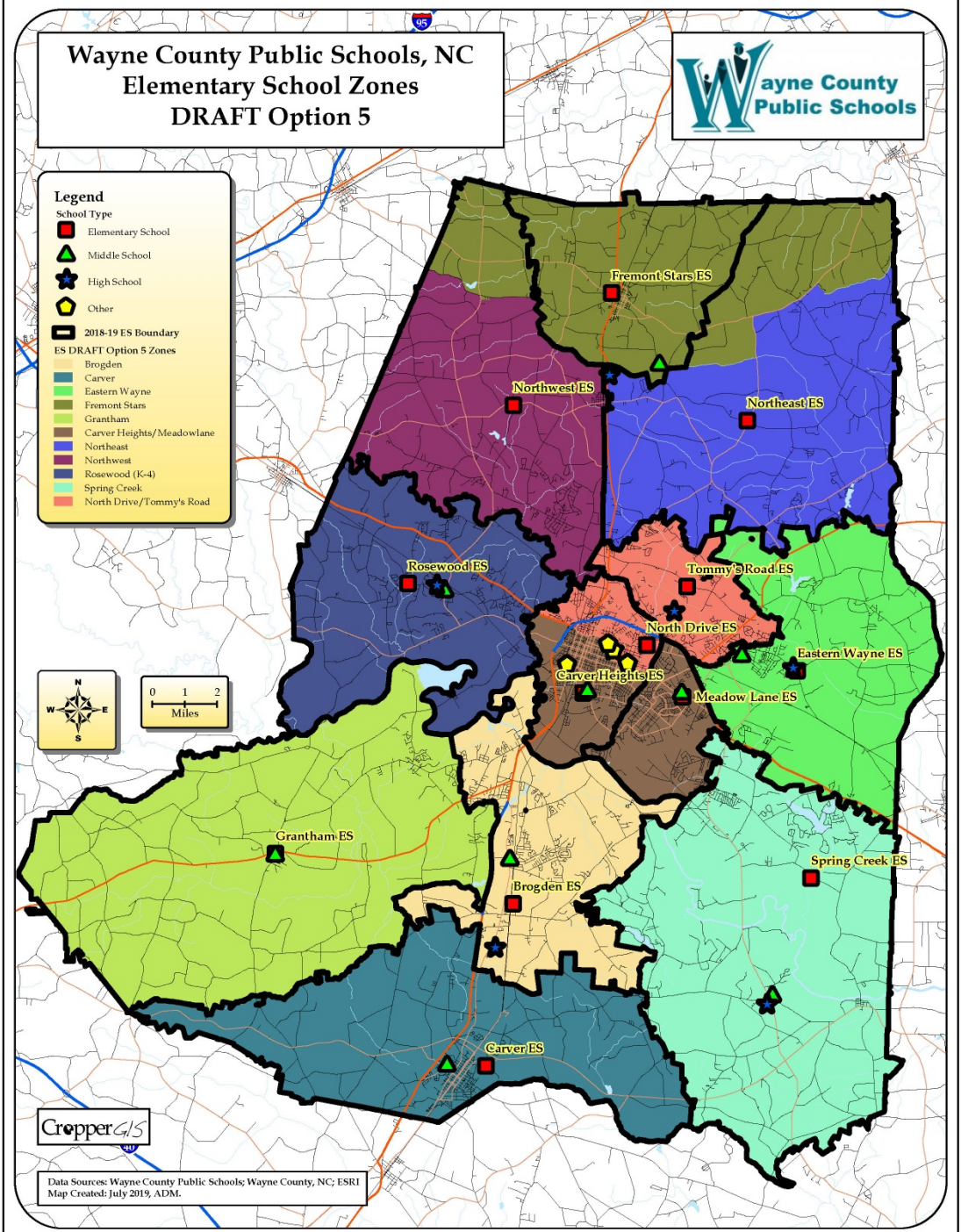
**2018-19 ES Boundary** (Thick black line)

**ES DRAFT Option 5 Zones**

- Brogden (Light blue)
- Carver (Dark blue)
- Eastern Wayne (Light green)
- Fremont Stars (Olive green)
- Grantham (Light yellow-green)
- Carver Heights/Meadowlane (Brown)
- Northeast (Blue)
- Northwest (Purple)
- Rosewood (Dark blue)
- Spring Creek (Light green)
- North Drive/Tommy's Road (Red)



Data Source: Wayne County Public Schools; Wayne County, NC; ESRI  
Map Created: July 2019, ADM.





Elementary School	2018-19 Capacity	Total Enrolled	DRAFT Option 1 Estimated Enrollment	DRAFT Option 2 Estimated Enrollment	DRAFT Option 3 Estimated Enrollment	DRAFT Option 4 Estimated Enrollment	DRAFT Option 5 Estimated Enrollment
Brogden Primary School	750	789	789	729	789	789	789
Carver Elementary School	518	563	563	563	563	563	563
Carver Heights Elementary School	586	450	465	503	489	570	495
Eastern Wayne Elementary School	617	664	664	664	664	664	664
Fremont Elementary School	308	246	333	315	336	336	336
Grantham Elementary School	396	445	445	424	445	445	445
Meadowlane Elementary School	723	561	658	658	707	643	820
North Drive Elementary School	498	597	619	403	368	477	382
Northeast Elementary School	585	685	632	630	630	630	630
Northwest Elementary School	667	752	718	738	717	717	717
Rosewood Elementary School	590	635	635	595	514	514	514
Spring Creek Elementary School	726	831	734	734	734	831	831
Tommy's Road Elementary School	603	673	636	673	673	673	666
<b>Total</b>	<b>7567</b>	<b>7891</b>	<b>7891</b>	<b>7629</b>	<b>7629</b>	<b>7852</b>	<b>7852</b>



Elementary School	2018-19 Capacity	Enrolled Utilization	DRAFT Option 1 Utilization	DRAFT Option 2 Utilization	DRAFT Option3 Utilization	DRAFT Option 4 Utilization	DRAFT Option 5 Utilization
Brogden Primary School	750	105%	105%	97%	105%	105%	105%
Carver Elementary School	518	109%	109%	109%	109%	109%	109%
Carver Heights Elementary School	586	77%	79%	86%	83%	97%	84%
Eastern Wayne Elementary School	617	108%	108%	108%	108%	108%	108%
Fremont Elementary School	308	80%	108%	102%	109%	109%	109%
Grantham Elementary School	396	112%	112%	107%	112%	112%	112%
Meadowlane Elementary School	723	78%	91%	91%	98%	89%	113%
North Drive Elementary School	498	120%	124%	81%	74%	96%	77%
Northeast Elementary School	585	117%	108%	108%	108%	108%	108%
Northwest Elementary School	667	113%	108%	111%	107%	107%	107%
Rosewood Elementary School	590	108%	108%	101%	87%	87%	87%
Spring Creek Elementary School	726	114%	101%	101%	101%	114%	114%
Tommy's Road Elementary School	603	112%	105%	112%	112%	112%	110%
<b>Total</b>	<b>7567</b>	<b>104%</b>	<b>104%</b>	<b>101%</b>	<b>101%</b>	<b>104%</b>	<b>104%</b>

Student counts are based on the 10/08/2018 WCPS student database.

The estimated enrollment is calculated by adding the total number students within each new DRAFT option zone that “Live and Attend In” for the grade configuration for that school, plus the students that “Live Out and Attend In” a 2018-19 school, during the 2018-19 school year, plus students attending that school that live outside of the district, plus those students that could not be located in the GIS.



# Review of DRAFT Options

Elementary School	Enrolled				
	Percent Black	Percent White	Percent Other	Percent Non-Hispanic	Percent Hispanic
Brogden Primary School	34.3%	10.4%	55.3%	46.8%	53.2%
Carver Elementary School	40.5%	18.8%	40.7%	62.3%	37.7%
Carver Heights Elementary School	91.3%	3.1%	5.6%	96.2%	3.8%
Eastern Wayne Elementary School	45.2%	26.8%	28.0%	77.9%	22.1%
Fremont Elementary School	19.1%	59.8%	21.1%	85.8%	14.2%
Grantham Elementary School	18.7%	54.8%	26.5%	76.0%	24.0%
Meadowlane Elementary School	36.0%	34.8%	29.2%	83.6%	16.4%
North Drive Elementary School	88.4%	3.2%	8.4%	94.3%	5.7%
Northeast Elementary School	22.3%	54.3%	23.4%	85.5%	14.5%
Northwest Elementary School	20.1%	62.0%	18.0%	88.7%	11.3%
Rosewood Elementary School	10.9%	65.2%	23.9%	86.3%	13.7%
Spring Creek Elementary School	10.7%	27.7%	61.6%	40.6%	59.4%
Tommy's Road Elementary School	48.3%	31.9%	19.8%	89.5%	10.5%
<b>Total</b>	<b>36.2%</b>	<b>34.0%</b>	<b>29.8%</b>	<b>75.9%</b>	<b>24.1%</b>

Elementary School	Option 5				
	Percent Black	Percent White	Percent Other	Percent Non-Hispanic	Percent Hispanic
Brogden Primary School	34.3%	10.4%	55.3%	46.8%	53.2%
Carver Elementary School	40.5%	18.8%	40.7%	62.3%	37.7%
Carver Heights Elementary School	61.0%	20.4%	18.6%	89.5%	10.5%
Eastern Wayne Elementary School	45.2%	26.8%	28.0%	77.9%	22.1%
Fremont Elementary School	23.2%	57.4%	19.3%	86.0%	14.0%
Grantham Elementary School	18.7%	54.8%	26.5%	76.0%	24.0%
Meadowlane Elementary School	67.4%	16.7%	15.9%	90.4%	9.6%
North Drive Elementary School	61.0%	19.9%	19.1%	89.8%	10.2%
Northeast Elementary School	20.3%	55.7%	24.0%	85.7%	14.3%
Northwest Elementary School	20.2%	61.5%	18.3%	88.6%	11.4%
Rosewood Elementary School	10.5%	65.0%	24.5%	85.8%	14.2%
Spring Creek Elementary School	10.7%	27.7%	61.6%	40.6%	59.4%
Tommy's Road Elementary School	62.8%	23.1%	14.1%	91.9%	8.1%
<b>Total</b>	<b>36.7%</b>	<b>33.5%</b>	<b>29.8%</b>	<b>75.9%</b>	<b>24.1%</b>



# Review of DRAFT Options

Option	Total K-5th Live-In Students Impacted
Option 1	221
Option 2	501
Option 3	659
Option 4	281
Option 5	281

The Impact of Option 2 also includes 254 5th grade students from Rosewood ES and Carver Heights ES that will change from Elementary School to Middle School

The Impact of Option 3 also includes 247 5th grade students from Rosewood ES and Carver Heights ES that will change from Elementary School to Middle School

The Impact of Options 4 and 5 also includes 73 5th grade students from Meadowlane ES change from Middle School to Elementary School, and 118 students from Rosewood ES that will change from Elementary School to Middle School

ES Zone 2019-20	DRAFT Option 5 ES Zone	Total Grade Config Live and Attend In Students
Brogden	Brogden	769
Carver	Carver	549
Eastern Wayne	Eastern Wayne	596
Fremont Stars	Fremont Stars	174
Grantham	Grantham	421
Meadow Lane	Carver Heights/Meadowlane	534
North Drive/Carver Heights	Carver Heights/Meadowlane	663
North Drive/Carver Heights	North Drive/Tommy's Road	365
Northeast	Fremont Stars	55
Northeast	Northeast	590
Northwest	Fremont Stars	35
Northwest	Northwest	689
Rosewood	Rosewood (K-4)	474
Spring Creek	Spring Creek	782
Tommy's Road	North Drive/Tommy's Road	519



# Review of DRAFT Options

2018-19 ES Zone	2018-19 MS Zone	Total K-5th Live and Attend-In	ES Attendance
Brogden	Brogden	960	100%
Carver	Grantham	1	0%
Carver	Mount Olive	646	100%
Eastern Wayne	Eastern Wayne	596	100%
Fremont Stars	Norwayne	174	100%
Grantham	Grantham	524	100%
Meadow Lane	Greenwood	534	100%
North Drive/Carver Heights	Dillard	1028	100%
Northeast	Norwayne	645	100%
Northwest	Norwayne	724	100%
Rosewood	Rosewood	592	100%
Spring Creek	Greenwood	5	1%
Spring Creek	Spring Creek	923	99%
Tommy's Road	Eastern Wayne	337	65%
Tommy's Road	Norwayne	182	35%

DRAFT Option 5 ES	DRAFT Option 5 MS	Total K-5th Live and Attend-In	ES Attendance
Brogden	Brogden	960	100%
Carver	Mount Olive	647	100%
Carver Heights/Meadowlane	Dillard	663	55%
Carver Heights/Meadowlane	Greenwood	534	45%
Eastern Wayne	Eastern Wayne	596	100%
Fremont Stars	Norwayne	264	100%
Grantham	Grantham	524	100%
North Drive/Tommy's Road	Dillard	547	62%
North Drive/Tommy's Road	Greenwood	337	38%
Northeast	Eastern Wayne	248	42%
Northeast	Norwayne	342	58%
Northwest	Norwayne	689	100%
Rosewood (K-4)	Rosewood (5-8)	592	100%
Spring Creek	Spring Creek	928	100%



# Wayne County Public Schools, NC Middle School Zones DRAFT Option 5



**Legend**

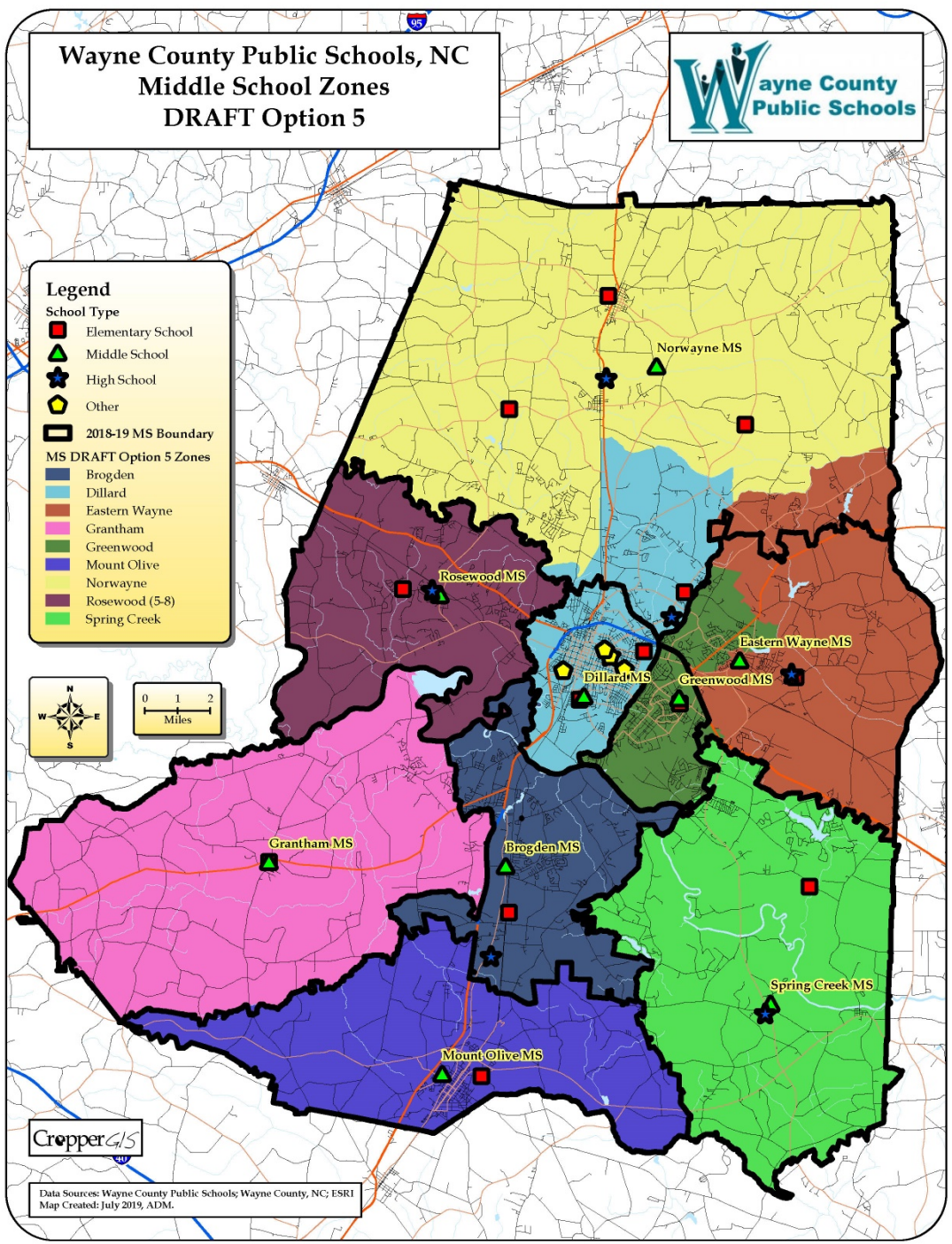
**School Type**

- Elementary School
- Middle School
- High School
- Other

**2018-19 MS Boundary**

**MS DRAFT Option 5 Zones**

- Brogden
- Dillard
- Eastern Wayne
- Grantham
- Greenwood
- Mount Olive
- Norwayne
- Rosewood (5-8)
- Spring Creek



Data Source: Wayne County Public Schools; Wayne County, NC; ESRI  
Map Created: July 2019, ADM.



Middle School	2018-19 Capacity	Total Enrolled	DRAFT Option 1 Estimated Enrollment	DRAFT Option 2 Estimated Enrollment	DRAFT Option 3 Estimated Enrollment	DRAFT Option 4 Estimated Enrollment	DRAFT Option 5 Estimated Enrollment
Brogden Middle School	672	570	570	532	570	570	570
Dillard Middle School	501	366	380	417	519	424	493
Eastern Wayne Middle School	498	537	537	537	537	389	480
Grantham Middle School	423	394	392	374	392	392	392
Greenwood Middle School	563	392	466	556	454	458	458
Mount Olive Middle School	387	386	388	388	388	388	388
Norwayne Middle School	781	887	873	887	887	829	669
Rosewood Middle School	433	333	333	510	454	454	454
Spring Creek Middle School	564	660	586	586	586	660	660
<b>Total</b>	<b>4822</b>	<b>4525</b>	<b>4525</b>	<b>4787</b>	<b>4787</b>	<b>4564</b>	<b>4564</b>

Middle School	2018-19 Capacity	Enrolled Utilization	DRAFT Option 1 Utilization	DRAFT Option 2 Utilization	DRAFT Option 3 Utilization	DRAFT Option 4 Utilization	DRAFT Option 5 Utilization
Brogden Middle School	672	85%	85%	79%	85%	85%	85%
Dillard Middle School	501	73%	76%	83%	104%	85%	98%
Eastern Wayne Middle School	498	108%	108%	108%	108%	78%	96%
Grantham Middle School	423	93%	93%	88%	93%	93%	93%
Greenwood Middle School	563	70%	83%	99%	81%	81%	81%
Mount Olive Middle School	387	100%	100%	100%	100%	100%	100%
Norwayne Middle School	781	114%	112%	114%	114%	106%	86%
Rosewood Middle School	433	77%	77%	118%	105%	105%	105%
Spring Creek Middle School	564	117%	104%	104%	104%	117%	117%
<b>Total</b>	<b>4822</b>	<b>94%</b>	<b>94%</b>	<b>99%</b>	<b>99%</b>	<b>95%</b>	<b>95%</b>

Student counts are based on the 10/08/2018 WCPS student database.

The estimated enrollment is calculated by adding the total number students within each new DRAFT option zone that “Live and Attend In” for the grade configuration for that school, plus the students that “Live Out and Attend In” a 2018-19 school, during the 2018-19 school year, plus students attending that school that live outside of the district, plus those students that could not be located in the GIS.





# Review of DRAFT Options

Middle School	Enrolled				
	Percent Black	Percent White	Percent Other	Percent Non-Hispanic	Percent Hispanic
Brogden Middle School	34.7%	11.6%	53.7%	49.1%	50.9%
Dillard Middle School	87.7%	2.2%	10.1%	92.3%	7.7%
Eastern Wayne Middle School	55.9%	24.8%	19.4%	87.7%	12.3%
Grantham Middle School	18.0%	54.8%	27.2%	74.9%	25.1%
Greenwood Middle School	53.6%	21.9%	24.5%	82.4%	17.6%
Mount Olive Middle School	34.7%	23.1%	42.2%	61.4%	38.6%
Norwayne Middle School	22.7%	56.8%	20.5%	87.3%	12.7%
Rosewood Middle School	13.8%	64.6%	21.6%	85.3%	14.7%
Spring Creek Middle School	11.8%	32.6%	55.6%	47.6%	52.4%
<b>Total</b>	<b>34.5%</b>	<b>33.9%</b>	<b>31.7%</b>	<b>73.3%</b>	<b>26.7%</b>

Middle School	Option 5				
	Percent Black	Percent White	Percent Other	Percent Non-Hispanic	Percent Hispanic
Brogden Middle School	34.7%	11.6%	53.7%	48.1%	51.9%
Dillard Middle School	71.4%	16.0%	12.6%	91.1%	8.9%
Eastern Wayne Middle School	46.5%	34.8%	18.8%	74.8%	25.2%
Grantham Middle School	18.1%	54.1%	27.8%	67.6%	32.4%
Greenwood Middle School	58.3%	17.9%	23.8%	65.5%	34.5%
Mount Olive Middle School	34.5%	21.9%	43.6%	56.2%	43.8%
Norwayne Middle School	22.4%	55.8%	21.8%	83.9%	16.1%
Rosewood Middle School	13.4%	64.3%	22.2%	79.1%	20.9%
Spring Creek Middle School	11.8%	32.3%	55.9%	42.7%	57.3%
<b>Total</b>	<b>33.6%</b>	<b>34.4%</b>	<b>32.0%</b>	<b>67.2%</b>	<b>32.8%</b>

Student counts are based on the 10/08/2018 WCPS student database.

The estimated enrollment is calculated by adding the total number students within each new DRAFT option zone that “Live and Attend In” for the grade configuration for that school, plus the students that “Live Out and Attend In” a 2018-19 school, during the 2018-19 school year, plus students attending that school that live outside of the district, plus those students that could not be located in the GIS.



# Review of DRAFT Options

Option	Total Grade Config Live and Attend In Students Impacted
Option 1	90
Option 2	443
Option 3	449
Option 4	399
Option 5	559

The Impact of Option 2 also includes 254 5th grade students from Rosewood ES and Carver Heights ES that will change from Elementary School to Middle School

The Impact of Option 3 also includes 247 5th grade students from Rosewood ES and Carver Heights ES that will change from Elementary School to Middle School

The Impact of Option 4 and 5 also includes 73 5th grade students from Meadowlane ES change from Middle School to Elementary School, and 118 students from Rosewood ES that will change from Elementary School to Middle School

MS Zone 2019-20	DRAFT Option 5 MS Zone	Total Grade Config Live and Attend In Students
Brogden	Brogden	562
Dillard	Dillard	365
Eastern Wayne	Eastern Wayne	326
Eastern Wayne	Greenwood	148
Grantham	Grantham	361
Grantham	Mount Olive	2
Greenwood	Greenwood	197
Mount Olive	Mount Olive	358
Norwayne	Dillard	127
Norwayne	Eastern Wayne	91
Norwayne	Norwayne	649
Rosewood	Rosewood (5-8)	410
Spring Creek	Spring Creek	614



# Review of DRAFT Options

2018-19 MS Zone	2018-19 HS Zone	Total 5-8th Live and Attend-In	MS Attendance
Brogden	Southern Wayne	375	67%
Brogden	Spring Creek	187	33%
Dillard	Goldsboro	501	100%
Eastern Wayne	Eastern Wayne	642	100%
Grantham	Southern Wayne	363	100%
Greenwood	Eastern Wayne	199	74%
Greenwood	Spring Creek	71	26%
Mount Olive	Southern Wayne	358	100%
Norwayne	Aycock	1145	100%
Rosewood	Rosewood	410	100%
Spring Creek	Spring Creek	614	100%

DRAFT Option 5 MS Zone	DRAFT Option 5 HS Zone	Total 5-8th Live and Attend-In	MS Attendance
Brogden	Southern Wayne	375	67%
Brogden	Spring Creek	187	33%
Dillard	Eastern Wayne	179	26%
Dillard	Goldsboro	499	74%
Eastern Wayne	Aycock	127	22%
Eastern Wayne	Eastern Wayne	442	78%
Grantham	Southern Wayne	361	100%
Greenwood	Eastern Wayne	470	100%
Mount Olive	Southern Wayne	360	100%
Norwayne	Aycock	841	100%
Rosewood (5-8)	Rosewood	410	100%
Spring Creek	Spring Creek	614	100%



# Wayne County Public Schools, NC High School Zones DRAFT Option 5



**Legend**

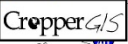
**School Type**

- Elementary School
- Middle School
- High School
- Other

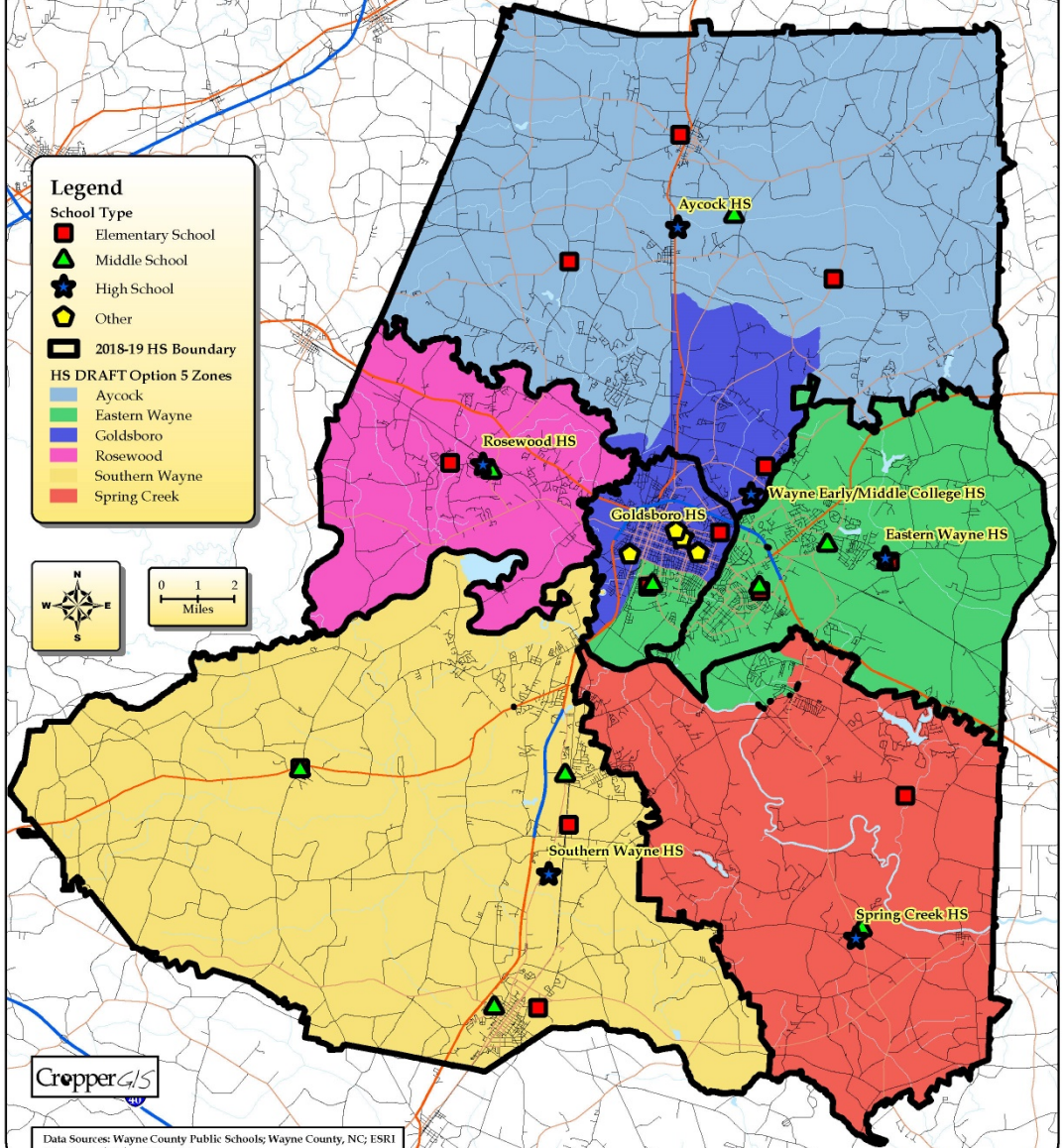
**2018-19 HS Boundary**

**HS DRAFT Option 5 Zones**

- Aycock
- Eastern Wayne
- Goldsboro
- Rosewood
- Southern Wayne
- Spring Creek



Data Source: Wayne County Public Schools; Wayne County, NC; ESRI  
Map Created: July 2019, ADM.





High School	2018-19 Capacity	Total Enrolled	DRAFT Option 1 Estimated Enrollment	DRAFT Option 2 Estimated Enrollment	DRAFT Option 3 Estimated Enrollment	DRAFT Option 4 Estimated Enrollment	DRAFT Option 5 Estimated Enrollment
Charles B. Aycock High School	1296	1164	1139	1164	1164	1087	981
Eastern Wayne High School	1403	965	1089	1088	1031	1243	1243
Goldsboro High School	672	574	599	574	567	432	538
Rosewood High School	556	499	499	549	499	499	499
Southern Wayne High School	1219	1083	1083	1033	1083	1083	1083
Spring Creek High School	773	714	590	591	655	655	655
<b>Total</b>	<b>5919</b>	<b>4999</b>	<b>4999</b>	<b>4999</b>	<b>4999</b>	<b>4999</b>	<b>4999</b>

High School	2018-19 Capacity	Enrolled Utilization	DRAFT Option 1 Utilization	DRAFT Option 2 Utilization	DRAFT Option 3 Utilization	DRAFT Option 4 Utilization	DRAFT Option 5 Utilization
Charles B. Aycock High School	1296	90%	88%	90%	90%	84%	76%
Eastern Wayne High School	1403	69%	78%	78%	73%	89%	89%
Goldsboro High School	672	85%	89%	85%	84%	64%	80%
Rosewood High School	556	90%	90%	99%	90%	90%	90%
Southern Wayne High School	1219	89%	89%	85%	89%	89%	89%
Spring Creek High School	773	92%	76%	76%	85%	85%	85%
<b>Total</b>	<b>5919</b>	<b>84%</b>	<b>84%</b>	<b>84%</b>	<b>84%</b>	<b>84%</b>	<b>84%</b>

Student counts are based on the 10/08/2018 WCPS student database.

The estimated enrollment is calculated by adding the total number students within each new DRAFT option zone that “Live and Attend In” for the grade configuration for that school, plus the students that “Live Out and Attend In” a 2018-19 school, during the 2018-19 school year, plus students attending that school that live outside of the district, plus those students that could not be located in the GIS.



# Review of DRAFT Options

High School	Enrolled				
	Percent Black	Percent White	Percent Other	Percent Non-Hispanic	Percent Hispanic
Charles B. Aycock High School	21.0%	60.6%	18.4%	88.0%	12.0%
Eastern Wayne High School	52.2%	29.5%	18.2%	86.7%	13.3%
Goldsboro High School	90.1%	3.0%	7.0%	95.3%	4.7%
Rosewood High School	15.2%	64.9%	19.8%	88.2%	11.8%
Southern Wayne High School	35.5%	29.2%	35.4%	68.0%	32.0%
Spring Creek High School	16.2%	30.8%	52.9%	51.7%	48.3%
<b>Total</b>	<b>36.8%</b>	<b>37.3%</b>	<b>25.8%</b>	<b>79.1%</b>	<b>20.9%</b>

High School	Option 5				
	Percent Black	Percent White	Percent Other	Percent Non-Hispanic	Percent Hispanic
Charles B. Aycock High School	21.2%	59.6%	19.2%	87.2%	12.8%
Eastern Wayne High School	58.1%	24.2%	17.7%	87.0%	13.0%
Goldsboro High School	65.2%	25.1%	9.7%	75.3%	5.0%
Rosewood High School	15.2%	64.9%	19.8%	88.2%	11.8%
Southern Wayne High School	35.5%	29.2%	35.4%	68.0%	32.0%
Spring Creek High School	15.4%	31.5%	53.1%	51.1%	48.9%
<b>Total</b>	<b>36.8%</b>	<b>37.3%</b>	<b>25.8%</b>	<b>77.1%</b>	<b>20.8%</b>

Student counts are based on the 10/08/2018 WCPS student database.

The estimated enrollment is calculated by adding the total number students within each new DRAFT option zone that “Live and Attend In” for the grade configuration for that school, plus the students that “Live Out and Attend In” a 2018-19 school, during the 2018-19 school year, plus students attending that school that live outside of the district, plus those students that could not be located in the GIS.



# Review of DRAFT Options

Option	Total Grade Config Live and Attend In Students Impacted
Option 1	149
Option 2	173
Option 3	190
Option 4	355
Option 5	461

HS Zone 2019-20	DRAFT Option 5 HS Zone	Total Grade Config Live and Attend In Students
Aycock	Aycock	945
Aycock	Goldsboro	183
Eastern Wayne	Eastern Wayne	804
Goldsboro	Eastern Wayne	219
Goldsboro	Goldsboro	336
Rosewood	Rosewood	425
Southern Wayne	Southern Wayne	1046
Spring Creek	Eastern Wayne	59
Spring Creek	Spring Creek	626



# Group Discussion

**Group will discuss all 5 options as a whole.**

**Should we remove any options from consideration?**

**Are there any modifications to the options, or new options we should consider?**

**Can you narrow down to 2-3 options to share with the public for additional feedback?**

**Committee can take their time to review either individually or as a group prior to a full committee discussion.**





**Public Information Session has been  
moved to:**

**August 27, 2019 @ 6pm**

**Moffat Auditorium**

**Committee, please arrive 15-30 minutes  
early to see the layout and have a brief  
orientation.**