



-Committee Meeting 4-

Realignment Study 2020

September 16, 2019

CropperGIS



Meeting Objectives

1. To follow-up and answer questions in regards to the feedback received at the Public Information Session
2. To review DRAFT Option 6 and handouts
3. To work to narrow focus to 2 options to bring to the last committee meeting



Why We're Here

1. Wayne County Public Schools (WCPS) are reconstructing Meadow Lane Elementary School:
 - a) Meadow Lane Elementary School will have a 700 student capacity
2. Maximize efficient use of existing classroom space, especially at the elementary level, in light of the k-3 class size reduction mandate.
3. These factors necessitate a comprehensive look at attendance boundaries.
4. The implementation of these boundary changes are expected to take effect the Fall 2020 (2020-21) School Year.



Realignment Criteria

Rules to Follow

The Wayne County Public Schools has a set of criteria to follow when evaluating elementary school realignment options. These are rules to follow when considering any potential attendance zone adjustment.

The realignment committee will be oriented on these criteria and will follow them as best as possible as they consider realignment options.



Realignment Criteria

Rules to Follow

- **Balance school facility utilization**
 - Make every effort to have equitable utilization (where possible) across the district and in accordance with school capacities and funded allotment ratios in accordance with state law. Make efficient use of available space.
- **Account for future growth**
 - Allow for increasing attendance in high growth areas.
- **Close Proximity**
 - Students should be assigned to the school within the closest proximity to their homes where possible.
- **Establish clear feeder patterns and continuity**
 - Make every effort to establish a clear feeder pattern system (especially from middle school to high school), although it may be necessary to split an elementary school to feed to two or more middle schools. Make every effort to divide a large enough population so students can continue to the next level with familiar faces.



Rules to Follow

Realignment Criteria

- **Allow for highest-grade at current school grandfathering**
 - Allow for students who will be in the exit grade in the first school year of realignment to stay at their current school, however, transportation will not be provided for these students.
- **Minimize impact on students**
 - Attempt to minimize the amount of students impacted when making boundary adjustments.
- **Consider economic, cultural, and ethnic diversity**
 - Ensure schools are inclusionary, diverse, and not adversely affected by realignment decisions.
- **Make every effort to establish contiguous zones**
 - Avoid creating zones that are not connected to the primary attendance zone, where possible.



Realignment Criteria

Rules to Follow

- **Maximize busing efficiencies in transportation of students**

- Make every effort to account for transportation (school bus and car rider), parent commuting patterns, balance busing travel time, and costs.



- **Use major roads and natural boundaries wherever feasible to define attendance zones**

- Minimize the amount of students who need to cross major intersections and other barriers to maximize the safety and security of students, and optimize transportation efficiency by containing bus routes within natural boundaries wherever possible to avoid traffic delays and late arrivals.



Review of Timeline

Process & Timeline for Realignment Study									
	March '19	April '19	May '19	June '19	July '19	Aug. '19	Sept. '19	Oct. '19	Nov. '19
<i>Data Collection</i>									
<i>Data Analysis / Assimilation</i>									
<i>Internal Logistics Planning with district</i>									
<i>Grade Cohort Adjustment Feasibility Testing</i>									
<i>Background Report Development</i>									
<i>Baseline Options Development</i>									
<i>Public Information Session #1: Present Project Process, Criteria, Timeline, and Realignment Objectives to Community. Information meeting to public, without public comments.</i>				6/18					
<i>Planning Team Meeting 1</i> <i>- Review Background Data, Introduce Baseline Options</i>				6/19					
<i>Planning Team Meeting 2</i> <i>- Discuss Background Data & Baseline Options, Q&A</i>					7/8				
<i>Planning Team Meeting 3</i> <i>- Options Development, Prepare for Public Information Session #2</i>						8/1			
<i>Public Information Session #2: Present Preliminary Realignment Options to Community for Comment/Feedback</i>						8/27			
<i>Planning Team Meeting 4</i> <i>- Review public input, modify options</i>							9/16		
<i>Planning Team Meeting 5</i> <i>- Finalize Recommendations & Prepare for Board Presentation</i>								10/14	
<i>Presentation of Final Recommendations to the Board of Education</i>									11/25

We are here



Updates Since Last Meeting

Follow-up to Public Information Session Questions

- **Input received has been provided to the committee.**
 - **Both 'Thought Exchange' and General Feedback.**
 - **Those who were moved from northern middle/high schools expressed concern about transportation distance to city schools.**
 - **Also concerns about change in school quality.**
 - **Many suggested using other methods to help improve diversity, such as enhancing programs to draw students in/out of town.**
 - **Families who would be impacted by paired options in central part of the county expressed concern about the number of transitions that it creates.**
 - **Respondents from high minority schools in the city showed positive feedback to options that improve demographic diversity.**
- **DRAFT Option 6**
 - **Built per committee input from Meeting 3**
 - **Started with Option 5 (Current Option B)**
 - **Moved less area south with focus to address transportation issues in Middle and High school with other options**



Review of DRAFT Options

Remember that everything is considered
DRAFT!

- Nothing is written in stone
- Existing DRAFT options are subject to change
- New options can/will be created

*Focus isn't on picking the best solution YET, but to
openly explore the various options to present to the
public for feedback*



Review of DRAFT Options

DRAFT options are presented to you this evening

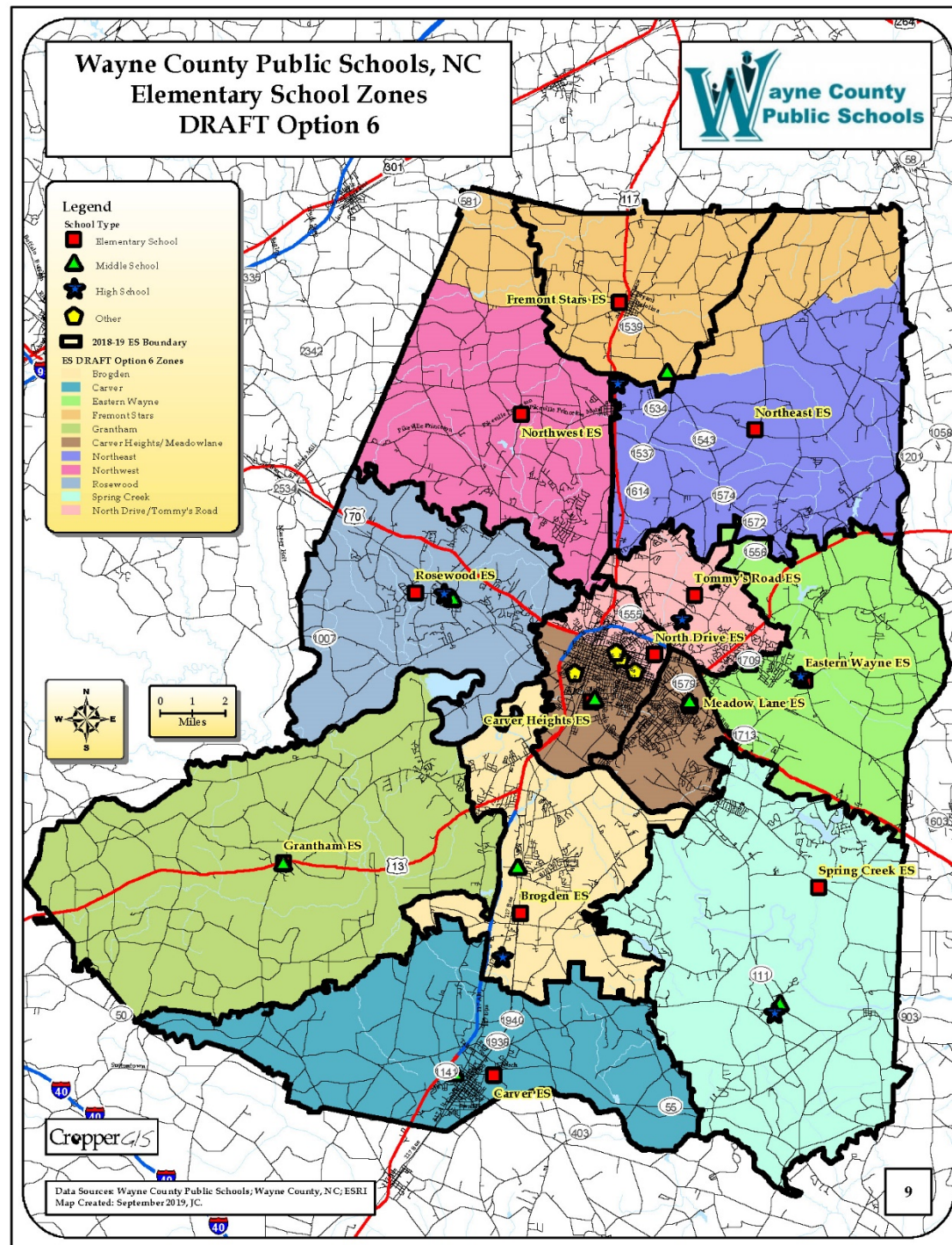
- Committee has 8.5x11 maps, as well as plots of maps for review
- Option maps are now available on interactive map (www.croppermap.com/waynecounty)
- Copies of the handouts, including small and large format maps are now posted on WCPS realignment webpage.



Review of DRAFT Options

When analyzing boundary options, it is best to look at the information in two different ways:

- Study the geography i.e. shape of the current and option zone lines
 - Look at where the lines shift away from the current vs. the option
 - Look at road networks and envision how school busses and parents would travel to school
- Study the tables
 - Review the balance of enrollment, and identify any imbalances that may exist
 - Question why there may be imbalances, and examine possible ways to provide better balance





Elementary School	2018-19 Capacity	Total Enrolled	DRAFT Option A Estimated Enrollment	DRAFT Option B Estimated Enrollment	DRAFT Option 6 Estimated Enrollment
Brogden Primary School	750	789	789	789	789
Carver Elementary School	518	563	563	563	563
Carver Heights Elementary School	586	450	570	495	495
Eastern Wayne Elementary School	617	664	664	664	664
Fremont Elementary School	308	246	336	336	336
Grantham Elementary School	396	445	445	445	445
Meadowlane Elementary School	723	561	643	820	820
North Drive Elementary School	498	597	477	382	382
Northeast Elementary School	585	685	630	630	630
Northwest Elementary School	667	752	717	717	717
Rosewood Elementary School	590	635	635	635	635
Spring Creek Elementary School	726	831	831	831	831
Tommy's Road Elementary School	603	673	673	666	666
Total	7567	7891	7973	7973	7973

Elementary School	2018-19 Capacity	Enrolled Utilization	DRAFT Option A Utilization	DRAFT Option B Utilization	DRAFT Option 6 Utilization
Brogden Primary School	750	105%	105%	105%	105%
Carver Elementary School	518	109%	109%	109%	109%
Carver Heights Elementary School	586	77%	97%	84%	84%
Eastern Wayne Elementary School	617	108%	108%	108%	108%
Fremont Elementary School	308	80%	109%	109%	109%
Grantham Elementary School	396	112%	112%	112%	112%
Meadowlane Elementary School	723	78%	89%	113%	113%
North Drive Elementary School	498	120%	96%	77%	77%
Northeast Elementary School	585	117%	108%	108%	108%
Northwest Elementary School	667	113%	107%	107%	107%
Rosewood Elementary School	590	108%	108%	108%	108%
Spring Creek Elementary School	726	114%	114%	114%	114%
Tommy's Road Elementary School	603	112%	112%	110%	110%
Total	7567	104%	105%	105%	105%

Student counts are based on the 10/08/2018 WCPS student database.

DRAFT option zone that "Live and Attend In" for the grade configuration for that school, plus the students that "Live Out and Attend In" a 2018-19 school, during the 2018-19 school year, plus students attending that school that live outside of the district, plus those students that could not be located in the GIS.



Review of DRAFT Options

Elementary School	Enrolled				
	Percent Black	Percent White	Percent Other	Percent Non-Hispanic	Percent Hispanic
Brogden Primary School	34.3%	10.4%	55.3%	46.8%	53.2%
Carver Elementary School	40.5%	18.8%	40.7%	62.3%	37.7%
Carver Heights Elementary School	91.3%	3.1%	5.6%	96.2%	3.8%
Eastern Wayne Elementary School	45.2%	26.8%	28.0%	77.9%	22.1%
Fremont Elementary School	19.1%	59.8%	21.1%	85.8%	14.2%
Grantham Elementary School	18.7%	54.8%	26.5%	76.0%	24.0%
Meadowlane Elementary School	36.0%	34.8%	29.2%	83.6%	16.4%
North Drive Elementary School	88.4%	3.2%	8.4%	94.3%	5.7%
Northeast Elementary School	22.3%	54.3%	23.4%	85.5%	14.5%
Northwest Elementary School	20.1%	62.0%	18.0%	88.7%	11.3%
Rosewood Elementary School	10.9%	65.2%	23.9%	86.3%	13.7%
Spring Creek Elementary School	10.7%	27.7%	61.6%	40.6%	59.4%
Tommy's Road Elementary School	48.3%	31.9%	19.8%	89.5%	10.5%
Total	36.2%	34.0%	29.8%	75.9%	24.1%

Elementary School	Option 6				
	Percent Black	Percent White	Percent Other	Percent Non-Hispanic	Percent Hispanic
Brogden Primary School	34.3%	10.4%	55.3%	46.8%	53.2%
Carver Elementary School	40.5%	18.8%	40.7%	62.3%	37.7%
Carver Heights Elementary School	61.0%	20.4%	18.6%	89.5%	10.5%
Eastern Wayne Elementary School	45.2%	26.8%	28.0%	77.9%	22.1%
Fremont Elementary School	23.2%	57.4%	19.3%	86.0%	14.0%
Grantham Elementary School	18.7%	54.8%	26.5%	76.0%	24.0%
Meadowlane Elementary School	67.4%	16.7%	15.9%	90.4%	9.6%
North Drive Elementary School	61.0%	19.9%	19.1%	89.8%	10.2%
Northeast Elementary School	20.3%	55.7%	24.0%	85.7%	14.3%
Northwest Elementary School	20.2%	61.5%	18.3%	88.6%	11.4%
Rosewood Elementary School	10.9%	65.2%	23.9%	86.3%	13.7%
Spring Creek Elementary School	10.7%	27.7%	61.6%	40.6%	59.4%
Tommy's Road Elementary School	62.8%	23.1%	14.1%	91.9%	8.1%
Total	36.3%	34.0%	29.7%	76.0%	24.0%

Student counts are based on the 10/08/2018 WCPS student database.

The estimated enrollment is calculated by adding the total number students within each new DRAFT option zone that "Live and Attend In" for the grade configuration for that school, plus the students that "Live Out and Attend In" a 2018-19 school, during the 2018-19 school year, plus students attending that school that live outside of the district, plus those students that could not be located in the GIS.



Review of DRAFT Options

Option	Total K-5th Live-In Students Impacted
Option A	163
Option B	163
Option 6	163

The Impact of Options A, B, and 6 also includes 73 5th grade students from Meadowlane ES change from Middle School to Elementary School.

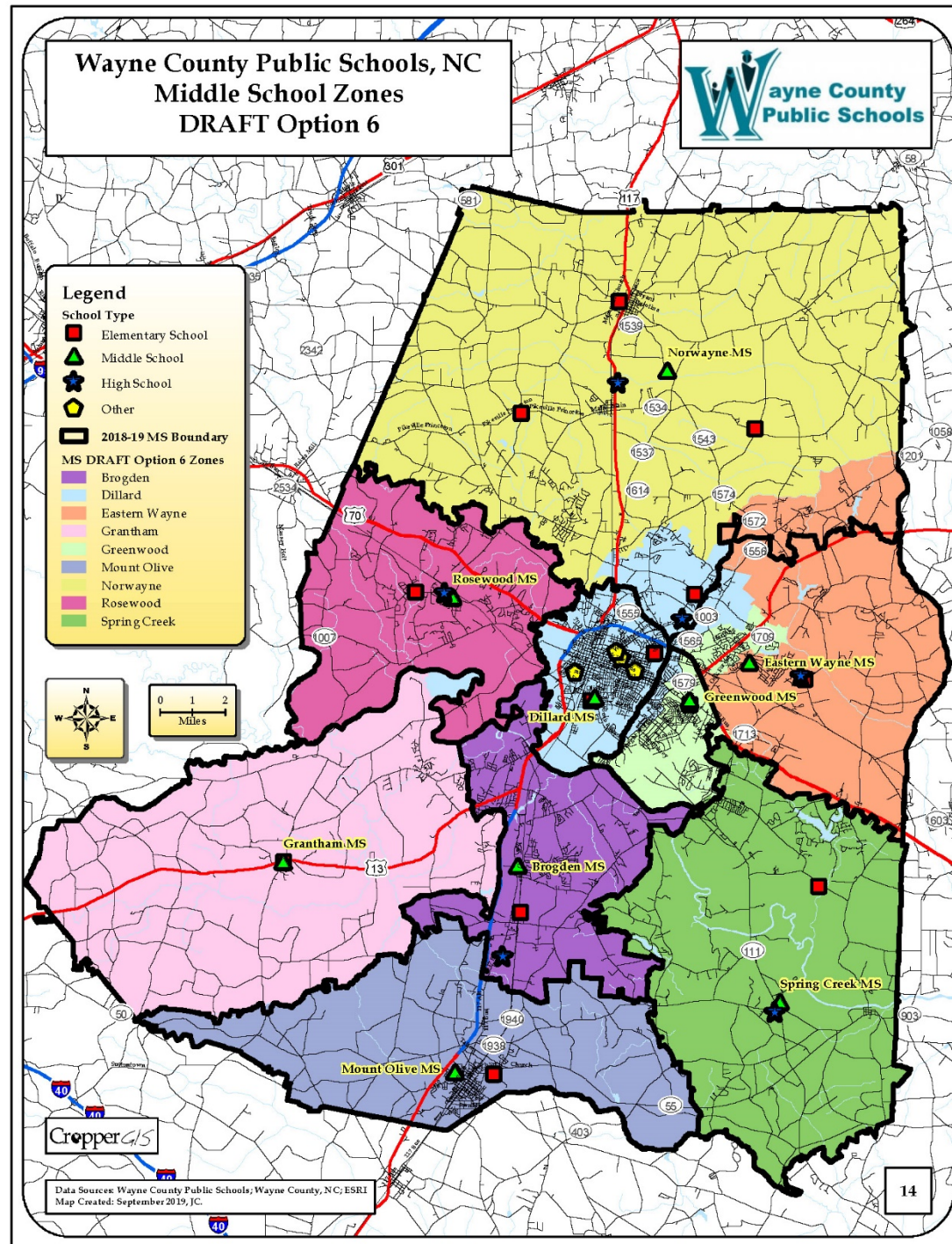
ES Zone 2019-20	DRAFT Option 6 ES Zone	Total Grade Config Live and Attend In Students
Brogden	Brogden	769
Carver	Carver	549
Eastern Wayne	Eastern Wayne	596
Fremont Stars	Fremont Stars	174
Grantham	Grantham	421
Meadow Lane	Carver Heights/Meadowlane	534
North Drive/Carver Heights	Carver Heights/Meadowlane	663
North Drive/Carver Heights	North Drive/Tommy's Road	365
Northeast	Fremont Stars	55
Northeast	Northeast	590
Northwest	Fremont Stars	35
Northwest	Northwest	689
Rosewood	Rosewood	592
Spring Creek	Spring Creek	782
Tommy's Road	North Drive/Tommy's Road	519



Review of DRAFT Options

2018-19 ES Zone	2018-19 MS Zone	Total K-5th Live and Attend-In	ES Attendance
Brogden	Brogden	960	100%
Carver	Grantham	1	0%
Carver	Mount Olive	646	100%
Eastern Wayne	Eastern Wayne	596	100%
Fremont Stars	Norwayne	174	100%
Grantham	Grantham	524	100%
Meadow Lane	Greenwood	534	100%
North Drive/Carver Heights	Dillard	1028	100%
Northeast	Norwayne	645	100%
Northwest	Norwayne	724	100%
Rosewood	Rosewood	592	100%
Spring Creek	Greenwood	5	1%
Spring Creek	Spring Creek	923	99%
Tommy's Road	Eastern Wayne	337	65%
Tommy's Road	Norwayne	182	35%

DRAFT Option 6 ES	DRAFT Option 6 MS	Total K-5th Live and Attend-In	ES Attendance
Brogden	Brogden	960	100%
Carver	Mount Olive	647	100%
Carver Heights/Meadowlane	Dillard	744	62%
Carver Heights/Meadowlane	Greenwood	453	38%
Eastern Wayne	Eastern Wayne	596	100%
Fremont Stars	Norwayne	264	100%
Grantham	Grantham	524	100%
North Drive/Tommy's Road	Dillard	609	69%
North Drive/Tommy's Road	Greenwood	275	31%
Northeast	Eastern Wayne	248	42%
Northeast	Norwayne	342	58%
Northwest	Norwayne	689	100%
Rosewood (K-4)	Rosewood (5-8)	592	100%
Spring Creek	Spring Creek	928	100%





Middle School	2018-19 Capacity	Total Enrolled	DRAFT Option A Estimated Enrollment	DRAFT Option B Estimated Enrollment	DRAFT Option 6 Estimated Enrollment
Broden Middle School	672	570	570	570	570
Dillard Middle School	501	366	424	493	490
Eastern Wayne Middle School	498	537	389	480	480
Graham Middle School	423	394	392	392	392
Greenwood Middle School	563	392	458	458	392
Mount Olive Middle School	387	386	388	388	388
Norwayne Middle School	781	887	829	669	738
Rosewood Middle School	433	333	333	333	333
Spring Creek Middle School	564	660	660	660	660
Total	4822	4525	4443	4443	4443

Middle School	2018-19 Capacity	Enrolled Utilization	DRAFT Option A Utilization	DRAFT Option B Utilization	DRAFT Option 6 Utilization
Broden Middle School	672	85%	85%	85%	85%
Dillard Middle School	501	73%	85%	98%	98%
Eastern Wayne Middle School	498	108%	78%	96%	96%
Graham Middle School	423	93%	93%	93%	93%
Greenwood Middle School	563	70%	81%	81%	70%
Mount Olive Middle School	387	100%	100%	100%	100%
Norwayne Middle School	781	114%	106%	86%	94%
Rosewood Middle School	433	77%	77%	77%	77%
Spring Creek Middle School	564	117%	117%	117%	117%
Total	4822	94%	92%	92%	92%

Student counts are based on the 10/08/2018 WCPS student database.

The estimated enrollment is calculated by adding the total number students within each new DRAFT option zone that “Live and Attend In” for the grade configuration for that school, plus the students that “Live Out and Attend In” a 2018-19 school, during the 2018-19 school year, plus students attending that school that live outside of the district, plus those students that could not be located in the GIS.



Review of DRAFT Options

Middle School	Enrolled				
	Percent Black	Percent White	Percent Other	Percent Non-Hispanic	Percent Hispanic
Brogden Middle School	34.7%	11.6%	53.7%	49.1%	50.9%
Dillard Middle School	87.7%	2.2%	10.1%	92.3%	7.7%
Eastern Wayne Middle School	55.9%	24.8%	19.4%	87.7%	12.3%
Grantham Middle School	18.0%	54.8%	27.2%	74.9%	25.1%
Greenwood Middle School	53.6%	21.9%	24.5%	82.4%	17.6%
Mount Olive Middle School	34.7%	23.1%	42.2%	61.4%	38.6%
Norwayne Middle School	22.7%	56.8%	20.5%	87.3%	12.7%
Rosewood Middle School	13.8%	64.6%	21.6%	85.3%	14.7%
Spring Creek Middle School	11.8%	32.6%	55.6%	47.6%	52.4%
Total	34.5%	33.9%	31.7%	73.3%	26.7%

Middle School	Option 6				
	Percent Black	Percent White	Percent Other	Percent Non-Hispanic	Percent Hispanic
Brogden Middle School	34.7%	11.6%	53.7%	48.1%	51.9%
Dillard Middle School	79.0%	9.0%	12.0%	91.4%	8.6%
Eastern Wayne Middle School	46.5%	34.8%	18.8%	74.8%	25.2%
Grantham Middle School	18.1%	54.1%	27.8%	67.6%	32.4%
Greenwood Middle School	55.1%	19.4%	25.5%	61.5%	38.5%
Mount Olive Middle School	34.5%	21.9%	43.6%	56.2%	43.8%
Norwayne Middle School	22.5%	56.1%	21.4%	84.1%	15.9%
Rosewood Middle School	13.8%	64.0%	22.2%	76.6%	23.4%
Spring Creek Middle School	11.8%	32.3%	55.9%	42.7%	57.3%
Total	34.2%	33.5%	32.3%	66.7%	33.3%

Student counts are based on the 10/08/2018 WCPS student database.

The estimated enrollment is calculated by adding the total number students within each new DRAFT option zone that "Live and Attend In" for the grade configuration for that school, plus the students that "Live Out and Attend In" a 2018-19 school, during the 2018-19 school year, plus students attending that school that live outside of the district, plus those students that could not be located in the GIS.



Review of DRAFT Options

Option	Total Grade Config Live and Attend In Students Impacted
Option A	281
Option B	441
Option 6	397

The Impact of Options A and B also includes 73 5th grade students from Meadowlane ES change from Middle School to Elementary School.

The Impact of Option 6 also includes 59 5th grade students from Meadowland ES change from Middle School to Elementary School.

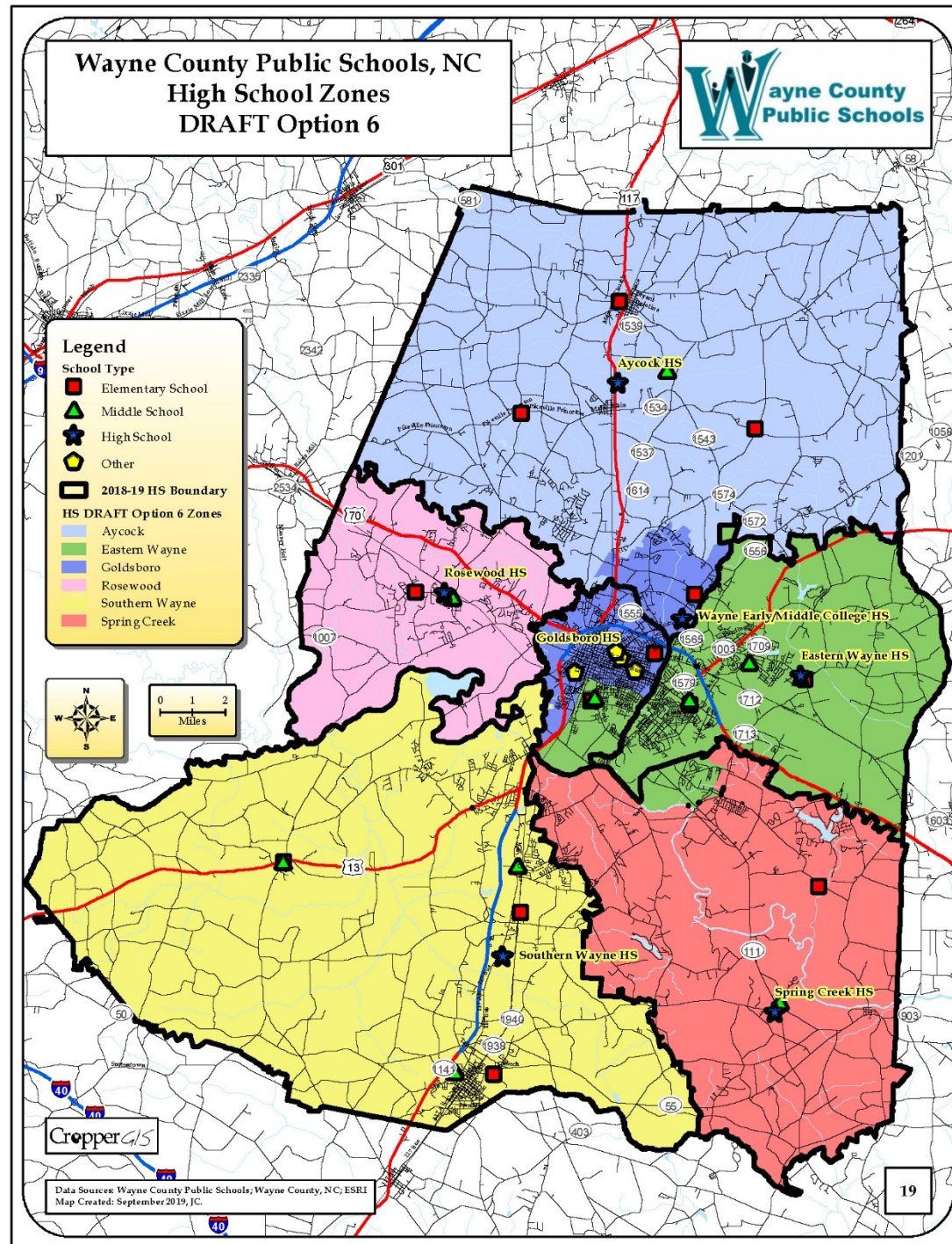
MS Zone 2019-20	DRAFT Option 6 MS Zone	Total Grade Config Live and Attend In Students
Brogden	Brogden	562
Dillard	Dillard	365
Eastern Wayne	Dillard	27
Eastern Wayne	Eastern Wayne	326
Eastern Wayne	Greenwood	121
Grantham	Grantham	361
Grantham	Mount Olive	2
Greenwood	Dillard	39
Greenwood	Greenwood	158
Mount Olive	Mount Olive	358
Norwayne	Dillard	58
Norwayne	Eastern Wayne	91
Norwayne	Norwayne	718
Rosewood	Rosewood (5-8)	292
Spring Creek	Spring Creek	614



Review of DRAFT Options

2018-19 MS Zone	2018-19 HS Zone	Total 5-8th Live and Attend-In	MS Attendance
Brogden	Southern Wayne	375	67%
Brogden	Spring Creek	187	33%
Dillard	Goldsboro	501	100%
Eastern Wayne	Eastern Wayne	642	100%
Grantham	Southern Wayne	363	100%
Greenwood	Eastern Wayne	199	74%
Greenwood	Spring Creek	71	26%
Mount Olive	Southern Wayne	358	100%
Norwayne	Aycock	1145	100%
Rosewood	Rosewood	410	100%
Spring Creek	Spring Creek	614	100%

DRAFT Option 6 MS Zone	DRAFT Option 6 HS Zone	Total 5-8th Live and Attend-In	MS Attendance
Brogden	Southern Wayne	375	67%
Brogden	Spring Creek	187	33%
Dillard	Eastern Wayne	265	39%
Dillard	Goldsboro	412	61%
Eastern Wayne	Aycock	127	22%
Eastern Wayne	Eastern Wayne	442	78%
Grantham	Southern Wayne	361	100%
Greenwood	Eastern Wayne	384	100%
Mount Olive	Southern Wayne	360	100%
Norwayne	Aycock	928	100%
Rosewood (5-8)	Rosewood	410	100%
Spring Creek	Spring Creek	614	100%





High School	2018-19 Capacity	Total Enrolled	DRAFT Option A Estimated Enrollment	DRAFT Option B Estimated Enrollment	DRAFT Option 6 Estimated Enrollment
Charles B. Aycock High School	1296	1164	1087	981	1087
Eastern Wayne High School	1403	965	1243	1243	1243
Goldsboro High School	672	574	432	538	432
Rosewood High School	556	499	499	499	499
Southern Wayne High School	1219	1083	1083	1083	1083
Spring Creek High School	773	714	655	655	655
Total	5919	4999	4999	4999	4999

High School	2018-19 Capacity	Enrolled Utilization	DRAFT Option A Utilization	DRAFT Option B Utilization	DRAFT Option 6 Utilization
Charles B. Aycock High School	1296	90%	84%	76%	84%
Eastern Wayne High School	1403	69%	89%	89%	89%
Goldsboro High School	672	85%	64%	80%	64%
Rosewood High School	556	90%	90%	90%	90%
Southern Wayne High School	1219	89%	89%	89%	89%
Spring Creek High School	773	92%	85%	85%	85%
Total	5919	84%	84%	84%	84%

Student counts are based on the 10/08/2018 WCPS

The estimated enrollment is calculated by adding the total number students within each new DRAFT option zone that “Live and Attend In” for the grade configuration for that school, plus the students that “Live Out and Attend In” a 2018-19 school, during the 2018-19 school year, plus students attending that school that live outside of the district, plus those students that could not be located in the GIS.



Review of DRAFT Options

High School	Percent Black	Percent White	Percent Other	Percent Non-Hispanic	Percent Hispanic
Charles B. Aycock High School	21.0%	60.6%	18.4%	88.0%	12.0%
Eastern Wayne High School	52.2%	29.5%	18.2%	86.7%	13.3%
Goldsboro High School	90.1%	3.0%	7.0%	95.3%	4.7%
Rosewood High School	15.2%	64.9%	19.8%	88.2%	11.8%
Southern Wayne High School	35.5%	29.2%	35.4%	68.0%	32.0%
Spring Creek High School	16.2%	30.8%	52.9%	51.7%	48.3%
Total	36.8%	37.3%	25.8%	79.1%	20.9%

Option 6					
High School	Percent Black	Percent White	Percent Other	Percent Non-Hispanic	Percent Hispanic
Charles B. Aycock High School	20.7%	61.1%	18.2%	87.9%	12.1%
Eastern Wayne High School	58.1%	24.2%	17.7%	87.0%	13.0%
Goldsboro High School	77.3%	13.0%	9.7%	93.8%	6.3%
Rosewood High School	15.2%	64.9%	19.8%	88.2%	11.8%
Southern Wayne High School	35.5%	29.2%	35.4%	68.0%	32.0%
Spring Creek High School	15.4%	31.5%	53.1%	51.1%	48.9%
Total	36.8%	37.3%	25.8%	77.1%	20.8%

Student counts are based on the 10/08/2018 WCPS student database.

The estimated enrollment is calculated by adding the total number students within each new DRAFT option zone that “Live and Attend In” for the grade configuration for that school, plus the students that “Live Out and Attend In” a 2018-19 school, during the 2018-19 school year, plus students attending that school that live outside of the district, plus those students that could not be located in the GIS.



Review of DRAFT Options

Option	Total Grade Config Live and Attend In Students Impacted	HS Zone 2019-20	DRAFT Option 6 HS Zone	Total Grade Config Live and Attend In Students
Option A	355			
Option B	461	Aycock	Aycock	1051
Option 6	355	Aycock	Goldsboro	77
		Eastern Wayne	Eastern Wayne	804
		Goldsboro	Eastern Wayne	219
		Goldsboro	Goldsboro	336
		Rosewood	Rosewood	425
		Southern Wayne	Southern Wayne	1046
		Spring Creek	Eastern Wayne	59
		Spring Creek	Spring Creek	626



Group Discussion

Group will discuss all 3 options as a whole.

Should we remove any options from consideration?

Are there any modifications to the options, or new options we should consider?

Can you narrow down to 2 options in advance of our next/final committee meeting?

Committee can take their time to review either individually or as a group prior to a full committee discussion.



**Next Meeting will be:
October 14, 2019 @ 6pm
WCPS School Board Office**

Same place, same time!