



**-Public Information Session-**

**Realignment Study 2020**

**August 27<sup>th</sup>, 2019**

**Cropper GIS**



# *Welcome and Introductions*



## *Tonight's Purpose*

1. **Learn** how the school realignment process has been working.
2. **Review** DRAFT realignment options A and B.
3. **Complete** online surveys related to the options to provide valuable input to the committee.



# Why We're Here

1. Wayne County Public Schools (WCPS) are reconstructing Meadow Lane Elementary School:
  - a) Meadow Lane Elementary School will have a 700-student capacity
2. Maximize efficient use of existing classroom space, especially at the elementary level, in light of the k-3 class size reduction mandate.
3. These factors necessitate a comprehensive look at attendance boundaries.
4. The implementation of these boundary changes are expected to take effect the Fall 2020 (2020-21) School Year.



# Realignment Criteria

## *Rules to Follow*

The Wayne County Public Schools has a set of criteria to follow when evaluating elementary school realignment options. These are rules to follow when considering any potential attendance zone adjustment.

The realignment committee has been oriented on these criteria and is following them as best as possible as they consider realignment options.



# Realignment Criteria

## Rules to Follow

- **Balance school facility utilization**
  - Make every effort to have equitable utilization (where possible) across the district and in accordance with school capacities and funded allotment ratios in accordance with state law. Make efficient use of available space.
- **Account for future growth**
  - Allow for increasing attendance in high growth areas.
- **Close Proximity**
  - Students should be assigned to the school within the closest proximity to their homes where possible.
- **Establish clear feeder patterns and continuity**
  - Make every effort to establish a clear feeder pattern system (especially from middle school to high school), although it may be necessary to split an elementary school to feed to two or more middle schools. Make every effort to divide a large enough population so students can continue to the next level with familiar faces.



# Realignment Criteria

## Rules to Follow

- **Allow for highest-grade at current school grandfathering**
  - Allow for students who will be in the exit grade in the first school year of realignment to stay at their current school, however, transportation will not be provided for these students.
- **Minimize impact on students**
  - Attempt to minimize the amount of students impacted when making boundary adjustments.
- **Consider economic, cultural, and ethnic diversity**
  - Ensure schools are inclusionary, diverse, and not adversely affected by realignment decisions.
- **Make every effort to establish contiguous zones**
  - Avoid creating zones that are not connected to the primary attendance zone, where possible.



# Realignment Criteria

## Rules to Follow

- **Maximize busing efficiencies in transportation of students**

- Make every effort to account for transportation (school bus and car rider), parent commuting patterns, balance busing travel time, and costs.



- **Use major roads and natural boundaries wherever feasible to define attendance zones**

- Minimize the amount of students who need to cross major intersections and other barriers to maximize the safety and security of students, and optimize transportation efficiency by containing bus routes within natural boundaries wherever possible to avoid traffic delays and late arrivals.

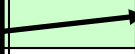




# Review of Timeline

Process & Timeline for Realignment Study									
	March '19	April '19	May '19	June '19	July '19	Aug. '19	Sept. '19	Oct. '19	Nov. '19
<i>Data Collection</i>									
<i>Data Analysis / Assimilation</i>									
<i>Internal Logistics Planning with district</i>									
<i>Grade Cohort Adjustment Feasibility Testing</i>									
<i>Background Report Development</i>									
<i>Baseline Options Development</i>									
<i>Public Information Session #1: Present Project Process, Criteria, Timeline, and Realignment Objectives to Community. Information meeting to public, without public comments.</i>				6/18					
<i>Planning Team Meeting 1</i> <i>- Review Background Data, Introduce Baseline Options</i>				6/19					
<i>Planning Team Meeting 2</i> <i>- Discuss Background Data &amp; Baseline Options, Q&amp;A</i>					7/8				
<i>Planning Team Meeting 3</i> <i>- Options Development, Prepare for Public Information Session #2</i>						8/1			
<i>Public Information Session #2: Present Preliminary Realignment Options to Community for Comment/Feedback</i>						8/27			
<i>Planning Team Meeting 4</i> <i>- Review public input, modify options</i>							9/16		
<i>Planning Team Meeting 5</i> <i>- Finalize Recommendations &amp; Prepare for Board Presentation</i>								10/14	
<i>Presentation of Final Recommendations to the Board of Education</i>									11/25

We are here





## Work done to date

- The committee's work is a little over  $\frac{1}{2}$  complete.
- Committee has met three times since June 2019 and has spent many hours between meetings reviewing information
- The committee has reviewed 5 variations of DRAFT options since the process started
  - Started with 2 DRAFT options; additional options generated each meeting based on committee and public feedback



## Work done to date

- Data and information examined includes: school enrollment and capacity, demographics, feeder pattern data, student impacts, and feedback from members of the public.
- Options are considered DRAFT throughout the process; continued dialog and consideration of data is always encouraged



Members of the public have the opportunity to participate in the process in many ways:

- All materials shared with the committee have been made available on the WCPS Realignment webpage. On this Realignment Study webpage is a site that houses all materials that have been shared with the committee, located at: <https://www.wcpsrealignment.com/>
- The realignment webpage contains a feedback form that allows the public to provide any feedback regarding the process at any time. This information is continually monitored, and shared with the committee, and will be made public.
- This Public Input Session is designed to share with the public the DRAFT options that are under consideration, and to solicit feedback on the options from you. At this meeting, we will be presenting the options and allowing you to review large maps and discuss your thoughts with the committee and/or consultants.



# Interpreting Maps

- Background colors represent the Option, where bold black outlines show the current boundaries
- Planning Blocks: Small areas for examining student populations
  - Map titles and notes clarify what each map represents
  - Labels within planning blocks represent one of the following:
    - Planning block ID (PB #)
    - Number of K-4<sup>th</sup> and K-5<sup>th</sup> students living within planning block who attend a boundary school



# Interpreting the Tables

- Statistics that are pertinent to the study accompany the large maps
- The data shown are the data the committee uses to evaluation options



# Tonight

- *Gallery Walk: Review Options A, and B and related data, talk to committee members*
- Committee members, WCPS staff, and consultants will be around the maps to discuss any thoughts the public may have
- Although discussions around the maps are very important, please submit your feedback via the online survey for the entire committee's benefit



# DRAFT Options Narrative

## Option A Narrative / Summary

The following document provides an overview and narrative related to Options A for Elementary, Middle, and High Schools.

- **Option A Elementary Schools**

For Option A Elementary Schools, Carver Heights, North Drive, and Meadow Lane ES are paired together. This means that all three schools share one large attendance zone, with K-1<sup>st</sup> grade students attending Meadow Lane, 2-3<sup>rd</sup> Grade students attending Carver Heights ES, and 4-5<sup>th</sup> grade students attending North Drive ES. This was done with the goal to balance building utilization as well as to improve the demographic diversity between the three schools.

Fremont Stars ES gains the northern parts of Northwest ES and Northeast ES, with a focus on balancing building utilization among the 3 schools.

- **Option A Middle Schools**

For Option A Middle Schools, Greenwood MS is assumed to change from a 5-8 grade building to a 6-8<sup>th</sup> grade. Tommy's Road Elementary School currently splits to Eastern Wayne MS and Norwayne MS, but in Option B, Tommy's Road ES is sent to both Dillard MS and Greenwood MS. This was done to better balance building utilization as well as improve the demographic diversity of Dillard MS and Greenwood MS.

- **Option A High Schools**

For the Option A High Schools, Goldsboro HS gains area from Aycock HS (the same area added from Norwayne MS to Dillard MS). The reason for this is to provide a better balance of building utilization and demographics. Goldsboro HS sends the southeastern part of their current zone to Eastern Wayne HS, and Eastern Wayne HS provides capacity relief to Spring Creek HS by gaining some area on the northern part of the current Spring Creek HS zone.





# Wayne County Public Schools, NC Elementary School Zones DRAFT Option A



**Legend**

**School Type**

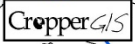
- Elementary School (Red square)
- Middle School (Green triangle)
- High School (Blue star)
- Other (Yellow pentagon)

**2018-19 ES Boundary** (Thick black line)

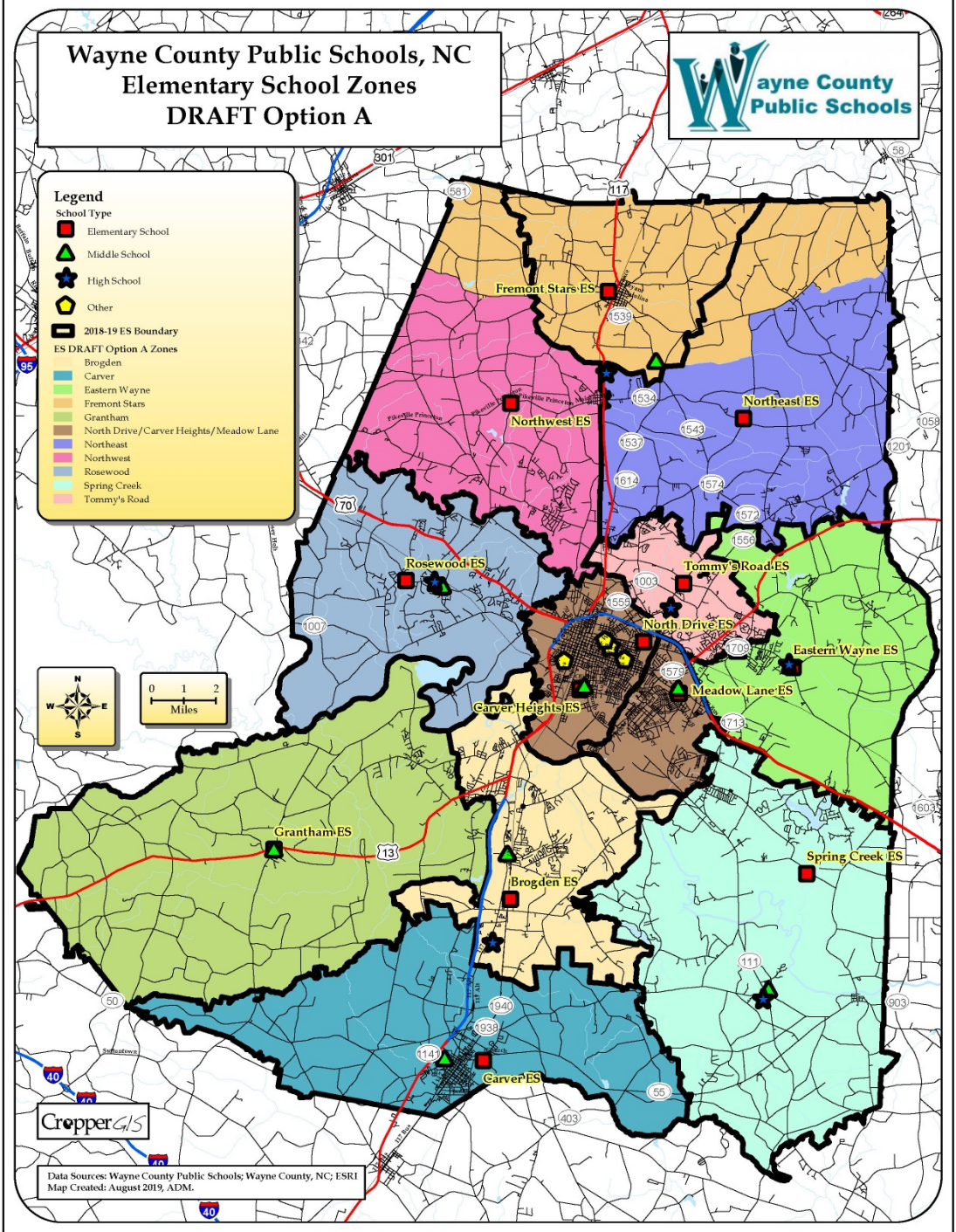
**ES DRAFT Option A Zones**

- Brogden (Light blue)
- Carver (Blue)
- Eastern Wayne (Light green)
- Fremont Stars (Orange)
- Grantham (Light green)
- North Drive/Carver Heights/Meadow Lane (Brown)
- Northwest (Pink)
- Rosewood (Light blue)
- Spring Creek (Light cyan)
- Tommy's Road (Light pink)

North arrow and scale bar (0 to 2 Miles).



Data Source: Wayne County Public Schools; Wayne County, NC; ESRI  
Map Created: August 2019, ADM.





# Wayne County Public Schools, NC Middle School Zones DRAFT Option A



**Legend**

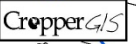
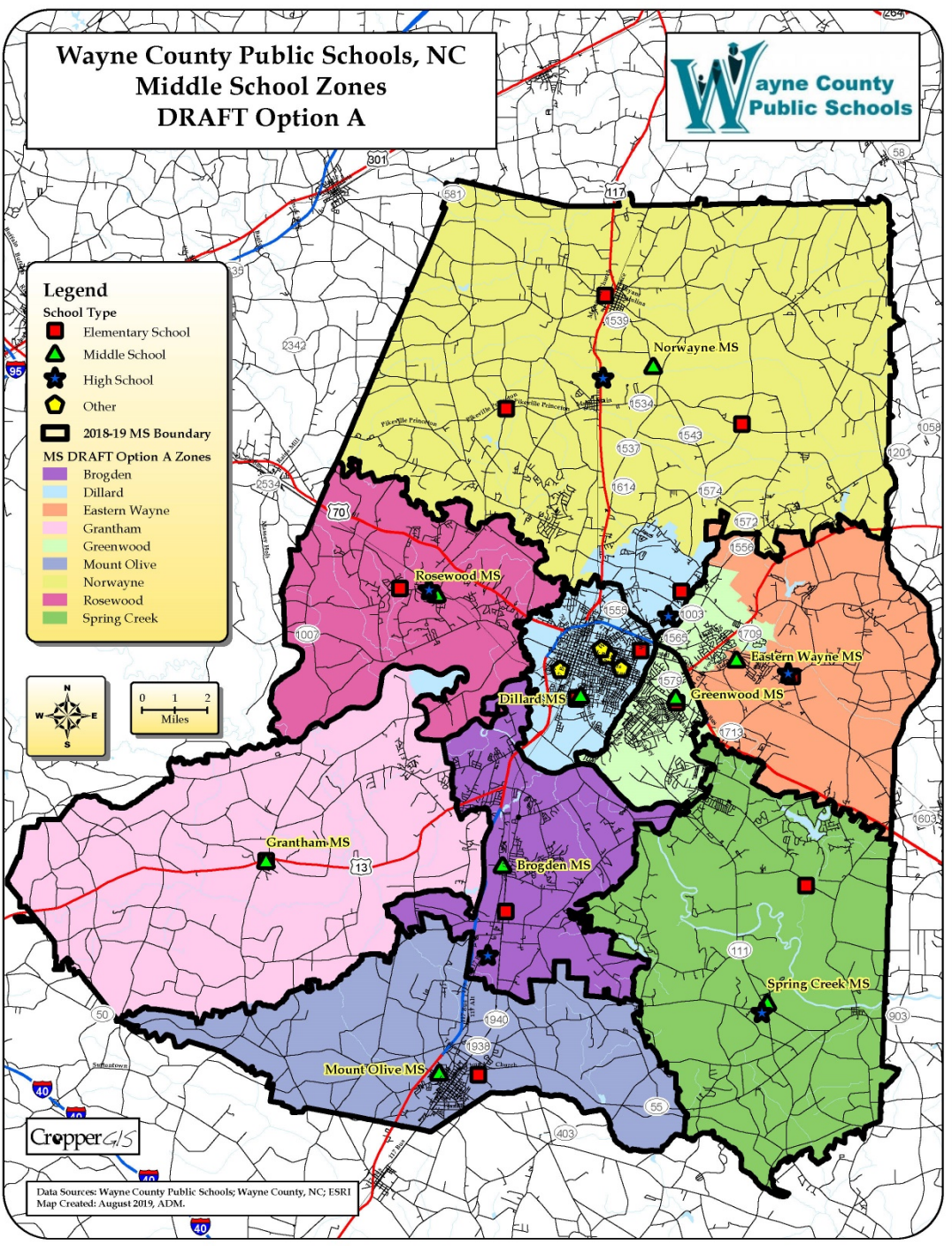
**School Type**

- Elementary School (Red square)
- Middle School (Green triangle)
- High School (Blue star)
- Other (Yellow pentagon)

**2018-19 MS Boundary** (Thick black line)

**MS DRAFT Option A Zones**

- Brogden (Purple)
- Dillard (Light Blue)
- Eastern Wayne (Orange)
- Grantham (Pink)
- Greenwood (Light Green)
- Mount Olive (Blue)
- Norwayne (Yellow)
- Rosewood (Magenta)
- Spring Creek (Green)



Data Sources: Wayne County Public Schools; Wayne County, NC; ESRI  
Map Created: August 2019, ADM.



# Wayne County Public Schools, NC High School Zones DRAFT Option A



**Legend**

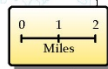
**School Type**

- Elementary School
- Middle School
- High School
- Other

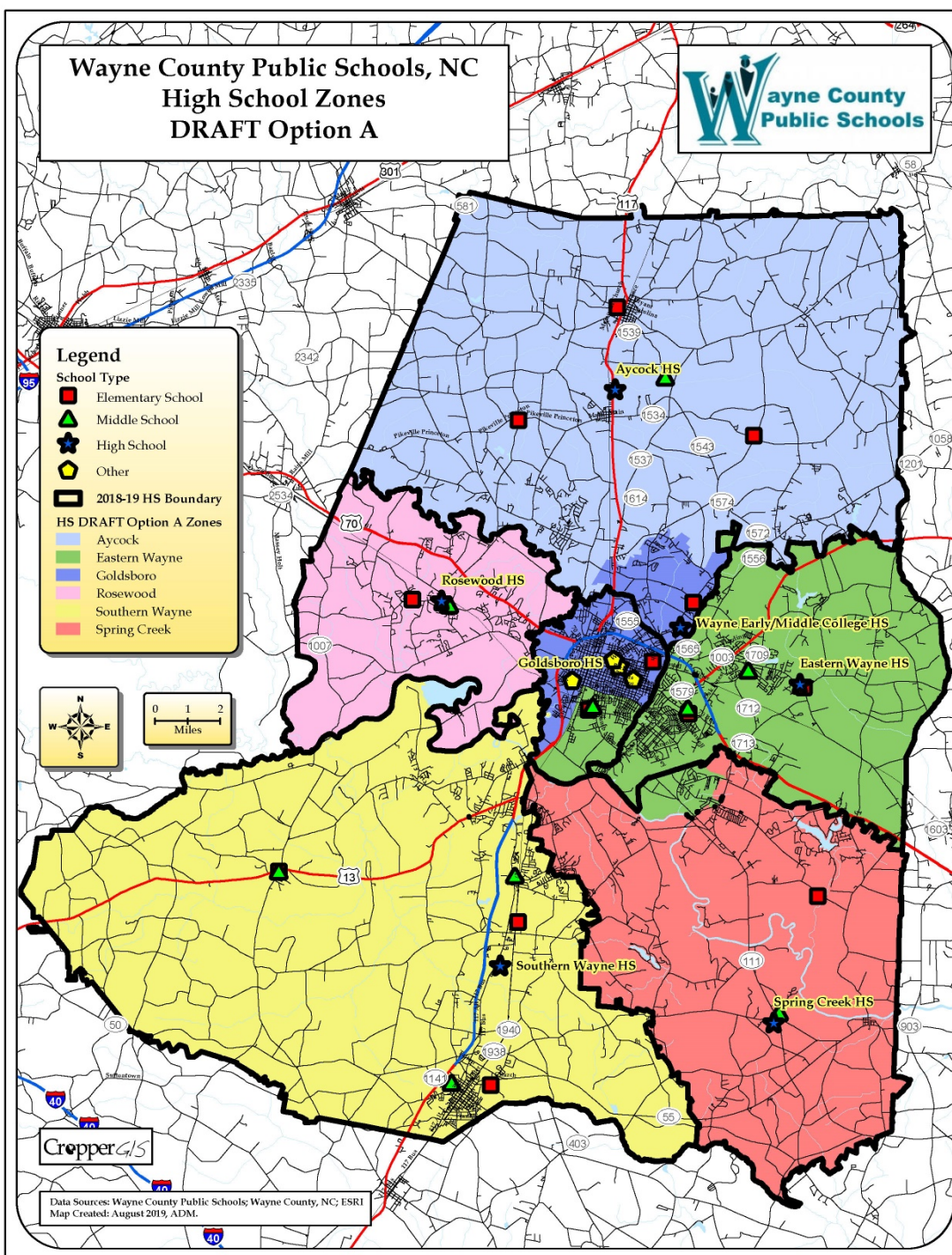
**2018-19 HS Boundary**

**HS DRAFT Option A Zones**

- Aycock
- Eastern Wayne
- Goldsboro
- Rosewood
- Southern Wayne
- Spring Creek



Data Sources: Wayne County Public Schools; Wayne County, NC; ESRI  
Map Created: August 2019, ADM.





# DRAFT Options Narrative

## Option B Narrative / Summary

The following document provides an overview and narrative related to Options B for Elementary, Middle, and High Schools.

- **Option B Elementary Schools**

For Option B Elementary Schools, North Drive and Tommy's Road are paired together, with K-1<sup>st</sup> grade students attending North Drive ES, and 2<sup>nd</sup>-5<sup>th</sup> grade students attending Tommy's Road within the same shared zone. Also, Carver Heights (K-1) and Meadow Lane (2-5) are paired together. This was done with the goal to balance building utilization as well as to improve the demographic diversity between the three schools.

Fremont Stars ES gains the northern parts of Northwest ES and Northeast ES, with a focus on balancing building utilization among the 3 schools.

- **Option B Middle Schools**

For Option B Middle Schools, Greenwood MS is assumed to change from a 5-8 grade building to a 6-8<sup>th</sup> grade. Tommy's Road Elementary School currently splits to Eastern Wayne MS and Norwayne MS, but in Option B, Tommy's Road ES is sent to both Dillard MS and Greenwood MS. A portion of Northeast ES also feeds into Dillard MS, as well as Eastern Wayne MS. This was done to better balance building utilization as well as improve the demographic diversity of Dillard MS and Greenwood MS.

- **Option B High Schools**

For the Option B High Schools, Goldsboro HS gains area from Aycock HS (the same area added from Norwayne MS to Dillard MS). The reason for this is to provide a better balance of building utilization and demographics. Goldsboro HS sends the southeastern part of their current zone to Eastern Wayne HS, and Eastern Wayne HS provides capacity relief to Spring Creek HS by gaining some area on the northern part of the current Spring Creek HS zone.



# Wayne County Public Schools, NC Elementary School Zones DRAFT Option B



**Legend**

**School Type**

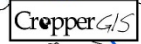
- Elementary School (Red square)
- Middle School (Green triangle)
- High School (Blue star)
- Other (Yellow pentagon)

**2018-19 ES Boundary** (Thick black line)

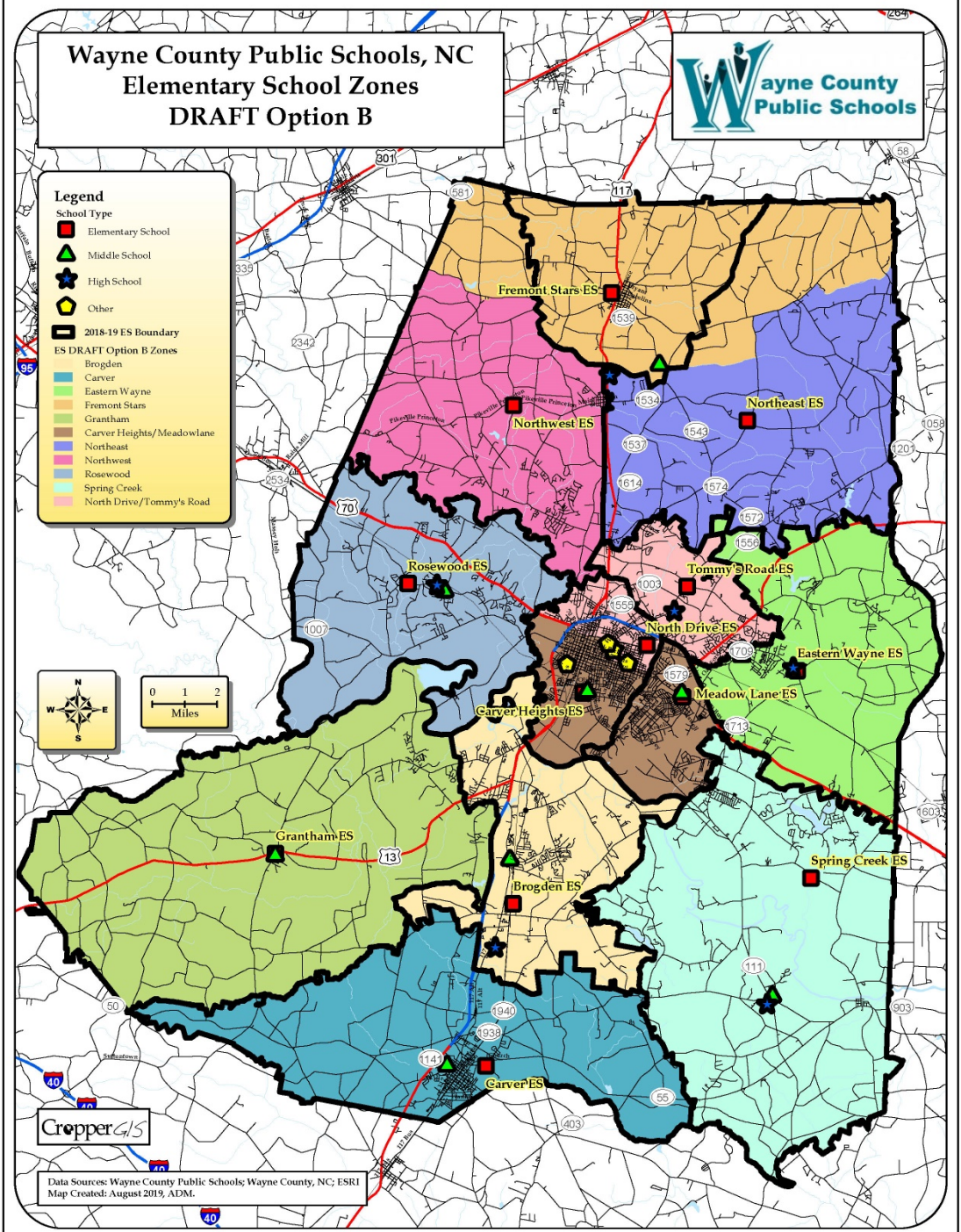
**ES DRAFT Option B Zones**

- Brogden (Light blue)
- Carver (Dark blue)
- Eastern Wayne (Light green)
- Fremont Stars (Orange)
- Grantham (Light green)
- Carver Heights/Meadowlane (Brown)
- Northeast (Purple)
- Northwest (Pink)
- Rosewood (Light blue)
- Spring Creek (Light cyan)
- North Drive/Tommy's Road (Light pink)

0 1 2  
Miles



Data Source: Wayne County Public Schools; Wayne County, NC; ESRI  
Map Created: August 2019, ADM.





# Wayne County Public Schools, NC Middle School Zones DRAFT Option B



**Legend**

**School Type**

- Elementary School (Red square)
- Middle School (Green triangle)
- High School (Blue star)
- Other (Yellow pentagon)

**2018-19 MS Boundary**

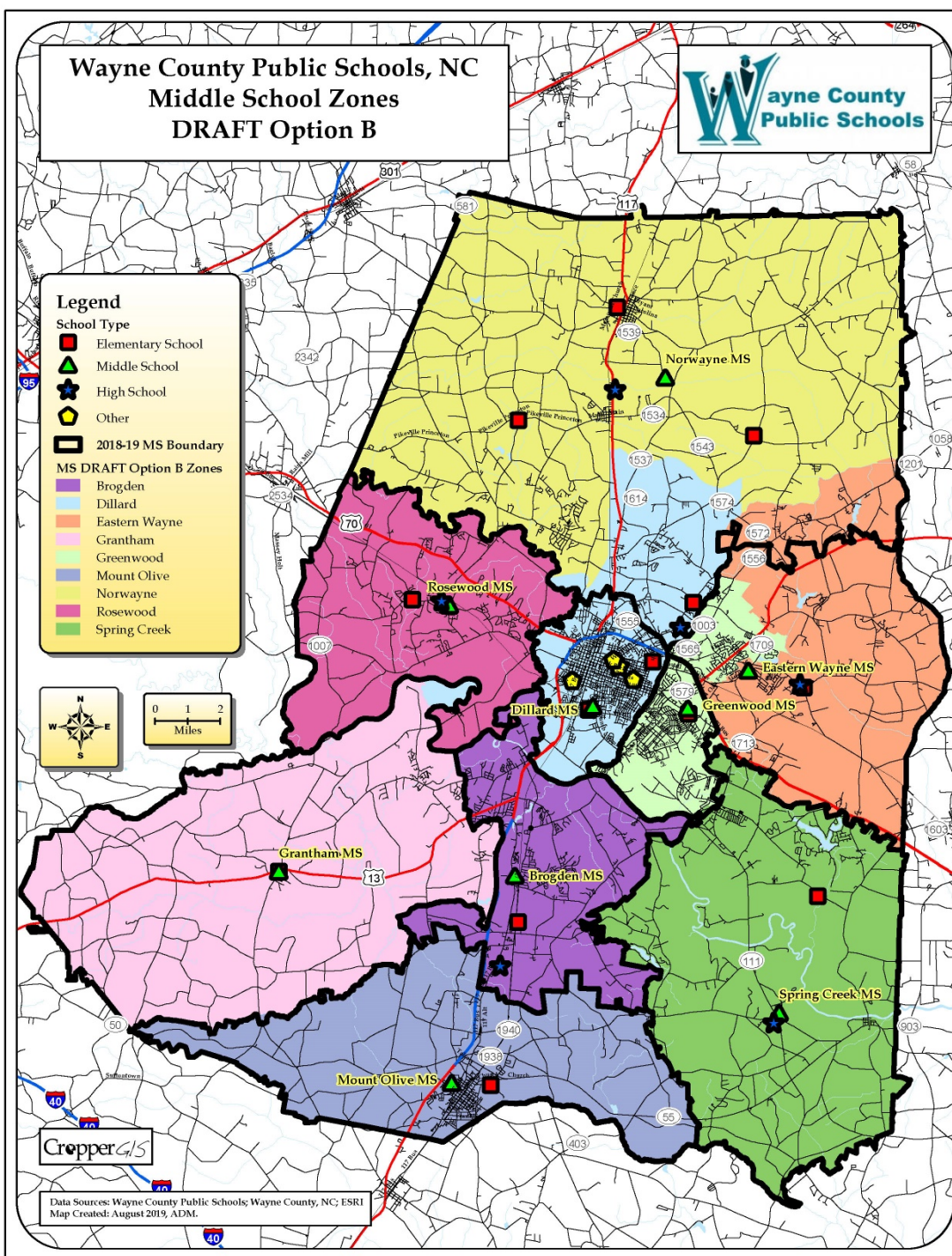
**MS DRAFT Option B Zones**

- Brogden (Purple)
- Dillard (Light Blue)
- Eastern Wayne (Orange)
- Grantham (Pink)
- Greenwood (Light Green)
- Mount Olive (Blue)
- Norwayne (Yellow)
- Rosewood (Magenta)
- Spring Creek (Green)

North arrow and scale bar (0 to 2 Miles).



Data Source: Wayne County Public Schools; Wayne County, NC; ESRI  
Map Created: August 2019, ADM.





# Wayne County Public Schools, NC High School Zones DRAFT Option B



**Legend**

**School Type**

- Elementary School (Red square)
- Middle School (Green triangle)
- High School (Blue star)
- Other (Yellow pentagon)

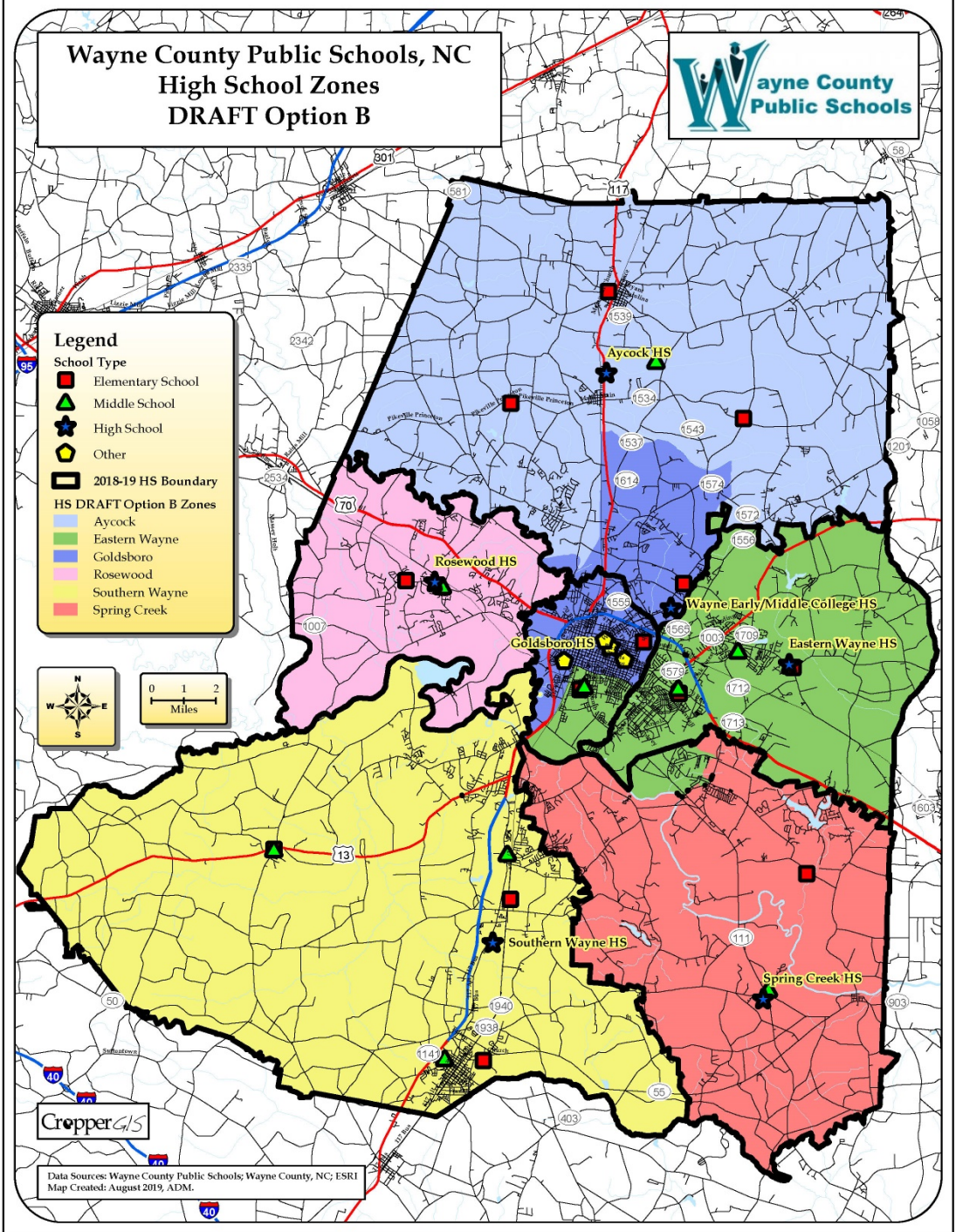
**2018-19 HS Boundary**

**HS DRAFT Option B Zones**

- Aycock (Light blue)
- Eastern Wayne (Light green)
- Goldsboro (Light purple)
- Rosewood (Light pink)
- Southern Wayne (Light yellow)
- Spring Creek (Light red)



Data Sources: Wayne County Public Schools; Wayne County, NC; ESRI  
Map Created: August 2019, ADM.





## Online Survey:

- Begins August 27<sup>th</sup> and available through September 8<sup>th</sup>.
- *Participate in Online survey, which can be found on Wayne County School's realignment page.*
  - Survey will help provide insight on the public's thoughts about the DRAFT options
  - Public feedback isn't intended to see which option gets the most votes from the public
  - The best feedback is constructive comments regarding changes that better adhere to the project objectives and realignment criteria





# Next Steps:

- Committee will review additional public feedback from online surveys and emails
- Adjustments could be made to DRAFT options, if suggestions help to better adhere to the objectives and criteria
- Committee has 2 more meetings scheduled after this Public Info Session
  - Next committee meeting is September 16<sup>th</sup>.
  - The following committee meeting is October 14<sup>th</sup>
  - Committee is expected to finalize recommendations at this meeting, which will then be presented to the School Board on November 25<sup>th</sup>.



## Further Questions/Comments?

- All materials shared with the committee are made available on the Wayne County Public Schools realignment study webpage.
- In addition to the survey for the Public Information Session, please provide any other comments on the general feedback form. General feedback form and other materials can be found at [www.wcpsrealignment.com](http://www.wcpsrealignment.com)



**Thank you for your continued input and participation in the realignment study process!**



# Wayne County Public Schools, NC Elementary School Zones DRAFT Option A



**Legend**

**School Type**

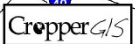
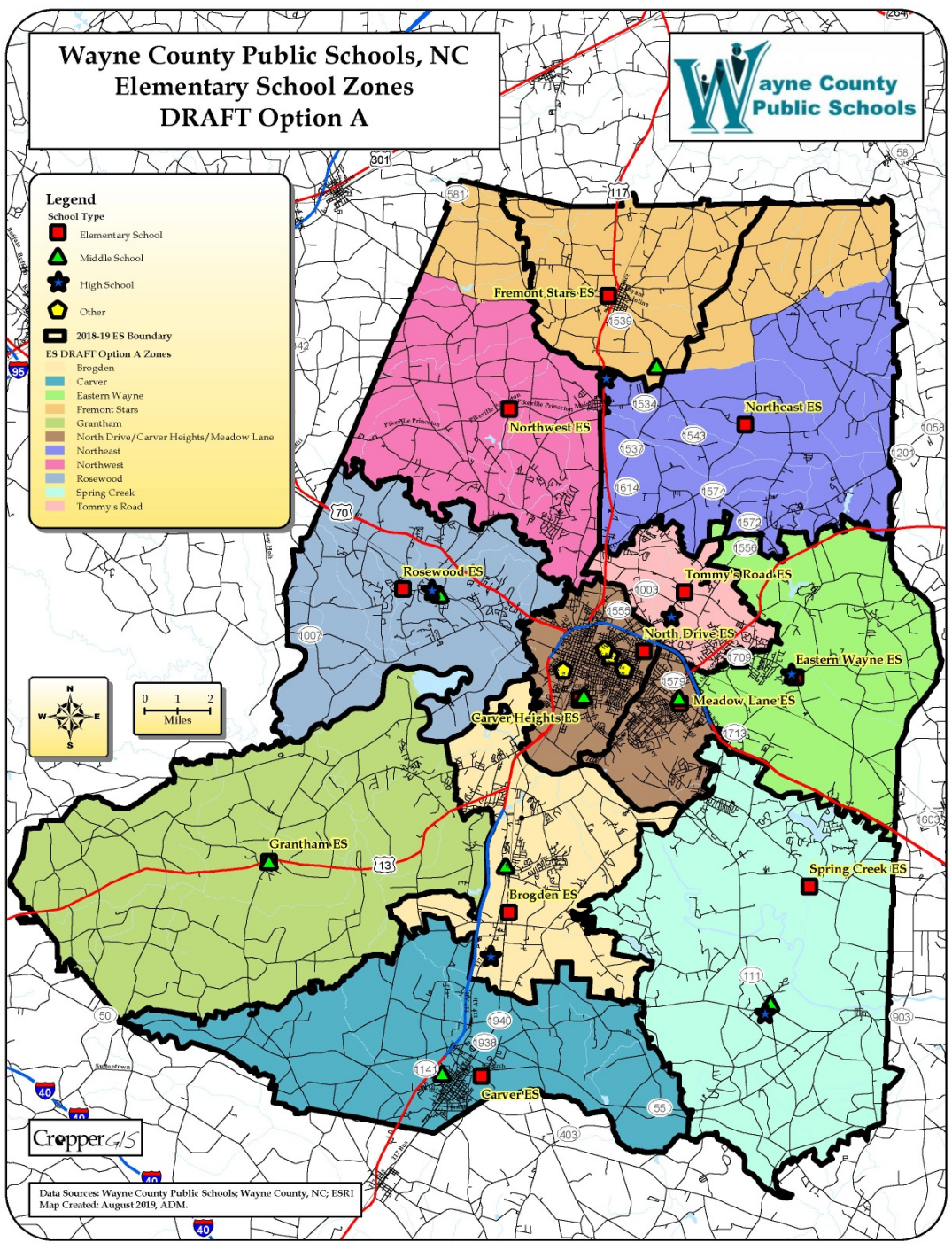
- Elementary School (Red square)
- Middle School (Green triangle)
- High School (Blue star)
- Other (Yellow pentagon)

**2018-19 ES Boundary** (Thick black line)

**ES DRAFT Option A Zones**

- Brogden (Light blue)
- Carver (Blue)
- Eastern Wayne (Light green)
- Fremont Stars (Orange)
- Grantham (Light green)
- North Drive/Carver Heights/Meadow Lane (Brown)
- Northwest (Pink)
- Rosewood (Light blue)
- Spring Creek (Light cyan)
- Tommy's Road (Light pink)

0 1 2  
Miles



Data Source: Wayne County Public Schools; Wayne County, NC; ESRI  
Map Created: August 2019, ADM



# Wayne County Public Schools, NC Elementary School Zones DRAFT Option B



**Legend**

**School Type**

- Elementary School (Red square)
- Middle School (Green triangle)
- High School (Blue star)
- Other (Yellow pentagon)

**2018-19 ES Boundary** (Thick black line)

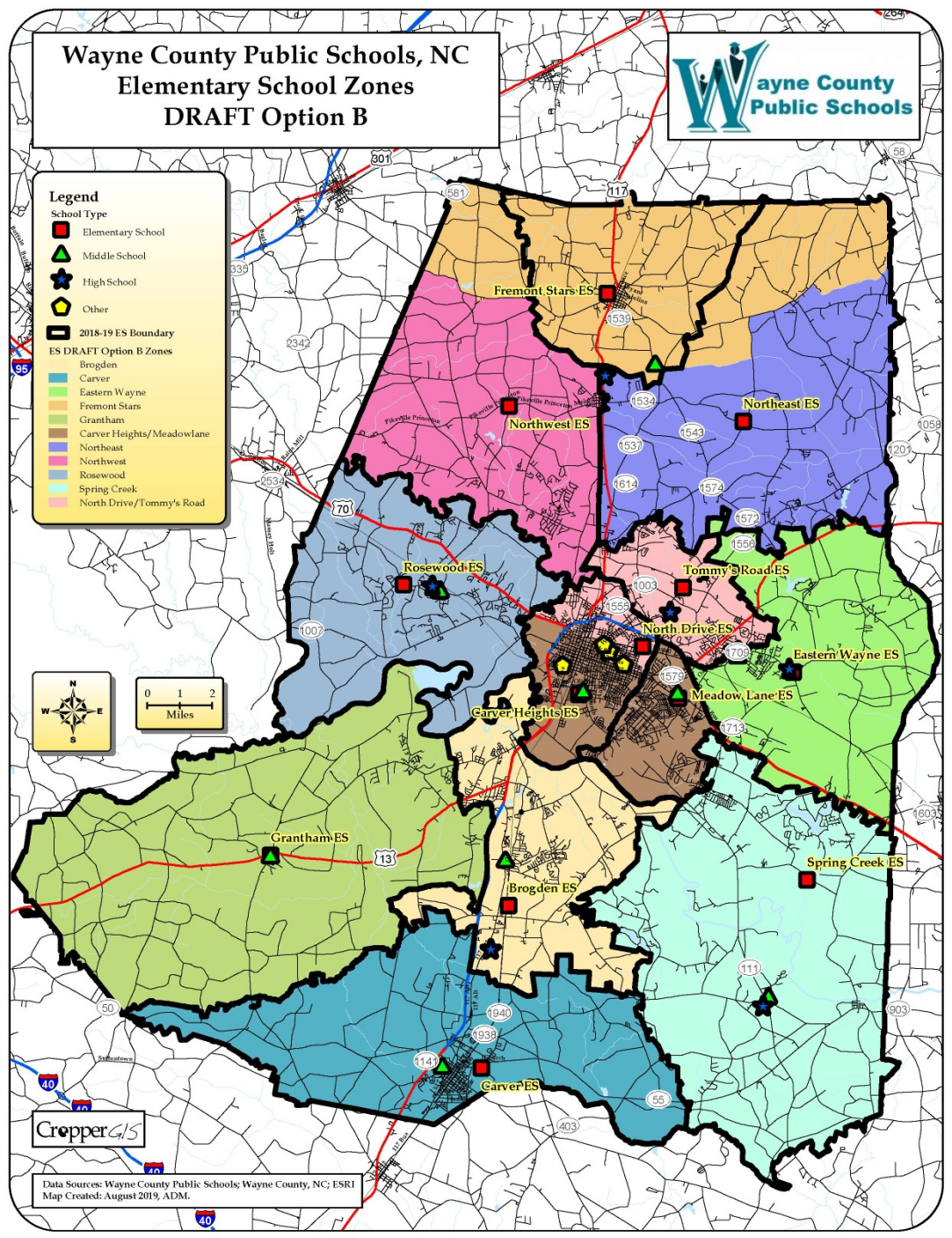
**ES DRAFT Option B Zones**

- Brogden (Light blue)
- Carver (Blue)
- Eastern Wayne (Light green)
- Fremont Stars (Orange)
- Grantham (Light green)
- Carver Heights/Meadowlane (Brown)
- Northeast (Purple)
- Northwest (Pink)
- Rosewood (Light blue)
- Spring Creek (Light cyan)
- North Drive/Tommy's Road (Light pink)

0 1 2  
Miles



Data Source: Wayne County Public Schools; Wayne County, NC; ESRI  
Map Created: August 2019, ADM.





Elementary School	Grade Config	Option A Grade Config	Option B Grade Config	2018-19 Capacity	Total Enrolled	DRAFT Option A Estimated Enrollment	DRAFT Option B Estimated Enrollment
Brogden Primary School	K-4	K-4	K-4	750	789	789	789
Carver Elementary School	K-4	K-4	K-4	518	563	563	563
Carver Heights Elementary School	3-5	2-3	K-1	586	450	570	495
Eastern Wayne Elementary School	K-5	K-5	K-5	617	664	664	664
Fremont Elementary School	K-5	K-5	K-5	308	246	336	336
Grantham Elementary School	K-4	K-4	K-4	396	445	445	445
Meadowlane Elementary School	K-4	K-1	2-5	723	561	643	820
North Drive Elementary School	K-2	4-5	K-1	498	597	477	382
Northeast Elementary School	K-5	K-5	K-5	585	685	630	630
Northwest Elementary School	K-5	K-5	K-5	667	752	717	717
Rosewood Elementary School	K-5	K-5	K-5	590	635	635	635
Spring Creek Elementary School	K-4	K-4	K-4	726	831	831	831
Tommy's Road Elementary School	K-5	K-5	2-5	603	673	673	666
<b>Total</b>				<b>7567</b>	<b>7891</b>	<b>7973</b>	<b>7973</b>



Elementary School	Grade Config	Option A Grade Config	Option B Grade Config	2018-19 Capacity	Enrolled Utilization	DRAFT Option A Utilization	DRAFT Option B Utilization
Brogden Primary School	K-4	K-4	K-4	750	105%	105%	105%
Carver Elementary School	K-4	K-4	K-4	518	109%	109%	109%
Carver Heights Elementary School	3-5	2-3	K-1	586	77%	97%	84%
Eastern Wayne Elementary School	K-5	K-5	K-5	617	108%	108%	108%
Fremont Elementary School	K-5	K-5	K-5	308	80%	109%	109%
Grantham Elementary School	K-4	K-4	K-4	396	112%	112%	112%
Meadowlane Elementary School	K-4	K-1	2-5	723	78%	89%	113%
North Drive Elementary School	K-2	4-5	K-1	498	120%	96%	77%
Northeast Elementary School	K-5	K-5	K-5	585	117%	108%	108%
Northwest Elementary School	K-5	K-5	K-5	667	113%	107%	107%
Rosewood Elementary School	K-5	K-5	K-5	590	108%	108%	108%
Spring Creek Elementary School	K-4	K-4	K-4	726	114%	114%	114%
Tommy's Road Elementary School	K-5	K-5	2-5	603	112%	112%	110%
<b>Total</b>				<b>7567</b>	<b>104%</b>	<b>105%</b>	<b>105%</b>

Student counts are based on the 10/08/2018 WCPS student database.

The estimated enrollment is calculated by adding the total number students within each new DRAFT option zone that “Live and Attend In” for the grade configuration for that school, plus the students that “Live Out and Attend In” a 2018-19 school, during the 2018-19 school year, plus students attending that school that live outside of the district, plus those students that could not be located in the GIS.



# Review of DRAFT Options

Elementary School	Enrolled				
	Percent Black	Percent White	Percent Other	Percent Non-Hispanic	Percent Hispanic
Brogden Primary School	34.3%	10.4%	55.3%	46.8%	53.2%
Carver Elementary School	40.5%	18.8%	40.7%	62.3%	37.7%
Carver Heights Elementary School	91.3%	3.1%	5.6%	96.2%	3.8%
Eastern Wayne Elementary School	45.2%	26.8%	28.0%	77.9%	22.1%
Fremont Elementary School	19.1%	59.8%	21.1%	85.8%	14.2%
Grantham Elementary School	18.7%	54.8%	26.5%	76.0%	24.0%
Meadowlane Elementary School	36.0%	34.8%	29.2%	83.6%	16.4%
North Drive Elementary School	88.4%	3.2%	8.4%	94.3%	5.7%
Northeast Elementary School	22.3%	54.3%	23.4%	85.5%	14.5%
Northwest Elementary School	20.1%	62.0%	18.0%	88.7%	11.3%
Rosewood Elementary School	10.9%	65.2%	23.9%	86.3%	13.7%
Spring Creek Elementary School	10.7%	27.7%	61.6%	40.6%	59.4%
Tommy's Road Elementary School	48.3%	31.9%	19.8%	89.5%	10.5%
<b>Total</b>	<b>36.2%</b>	<b>34.0%</b>	<b>29.8%</b>	<b>75.9%</b>	<b>24.1%</b>

Elementary School	Option A				
	Percent Black	Percent White	Percent Other	Percent Non-Hispanic	Percent Hispanic
Brogden Primary School	34.3%	10.4%	55.3%	46.8%	53.2%
Carver Elementary School	40.5%	18.8%	40.7%	62.3%	37.7%
Carver Heights Elementary School	69.3%	14.6%	16.1%	89.8%	10.2%
Eastern Wayne Elementary School	45.2%	26.8%	28.0%	77.9%	22.1%
Fremont Elementary School	23.2%	57.4%	19.3%	86.0%	14.0%
Grantham Elementary School	18.7%	54.8%	26.5%	76.0%	24.0%
Meadowlane Elementary School	66.9%	16.5%	16.6%	90.7%	9.3%
North Drive Elementary School	74.6%	13.4%	11.9%	92.7%	7.3%
Northeast Elementary School	20.3%	55.7%	24.0%	85.7%	14.3%
Northwest Elementary School	20.2%	61.5%	18.3%	88.6%	11.4%
Rosewood Elementary School	10.9%	65.2%	23.9%	86.3%	13.7%
Spring Creek Elementary School	10.7%	27.7%	61.6%	40.6%	59.4%
Tommy's Road Elementary School	48.3%	31.9%	19.8%	89.5%	10.5%
<b>Total</b>	<b>36.3%</b>	<b>34.0%</b>	<b>29.7%</b>	<b>76.0%</b>	<b>24.0%</b>

Elementary School	Option B				
	Percent Black	Percent White	Percent Other	Percent Non-Hispanic	Percent Hispanic
Brogden Primary School	34.3%	10.4%	55.3%	46.8%	53.2%
Carver Elementary School	40.5%	18.8%	40.7%	62.3%	37.7%
Carver Heights Elementary School	61.0%	20.4%	18.6%	89.5%	10.5%
Eastern Wayne Elementary School	45.2%	26.8%	28.0%	77.9%	22.1%
Fremont Elementary School	23.2%	57.4%	19.3%	86.0%	14.0%
Grantham Elementary School	18.7%	54.8%	26.5%	76.0%	24.0%
Meadowlane Elementary School	67.4%	16.7%	15.9%	90.4%	9.6%
North Drive Elementary School	61.0%	19.9%	19.1%	89.8%	10.2%
Northeast Elementary School	20.3%	55.7%	24.0%	85.7%	14.3%
Northwest Elementary School	20.2%	61.5%	18.3%	88.6%	11.4%
Rosewood Elementary School	10.9%	65.2%	23.9%	86.3%	13.7%
Spring Creek Elementary School	10.7%	27.7%	61.6%	40.6%	59.4%
Tommy's Road Elementary School	62.8%	23.1%	14.1%	91.9%	8.1%
<b>Total</b>	<b>36.3%</b>	<b>34.0%</b>	<b>29.7%</b>	<b>76.0%</b>	<b>24.0%</b>

Student counts are based on the 10/08/2018 WCPS student database.

The estimated enrollment is calculated by adding the total number students within each new DRAFT option zone that "Live and Attend In" for the grade configuration for that school, plus the students that "Live Out and Attend In" a 2018-19 school, during the 2018-19 school year, plus students attending that school that live outside of the district, plus those students that could not be located in the GIS.





# Review of DRAFT Options

Option	Total K-5th Live-In Students Impacted
Option A	163
Option B	163

The Impact of Options A and B also includes 73 5th grade students from Meadowlane ES change from Middle School to Elementary School.

ES Zone 2019-20	DRAFT Option A ES Zone	Total Grade Config Live and Attend In Students
Brogden	Brogden	769
Carver	Carver	549
Eastern Wayne	Eastern Wayne	596
Fremont Stars	Fremont Stars	174
Grantham	Grantham	421
Meadow Lane	North Drive/Carver Heights/Meadow Lane	534
North Drive/Carver Heights	North Drive/Carver Heights/Meadow Lane	1028
Northeast	Fremont Stars	55
Northeast	Northeast	590
Northwest	Fremont Stars	35
Northwest	Northwest	689
Rosewood	Rosewood	592
Spring Creek	Spring Creek	782
Tommy's Road	Tommy's Road	519

ES Zone 2019-20	DRAFT Option B ES Zone	Total Grade Config Live and Attend In Students
Brogden	Brogden	769
Carver	Carver	549
Eastern Wayne	Eastern Wayne	596
Fremont Stars	Fremont Stars	174
Grantham	Grantham	421
Meadow Lane	Carver Heights/Meadowlane	534
North Drive/Carver Heights	Carver Heights/Meadowlane	663
North Drive/Carver Heights	North Drive/Tommy's Road	365
Northeast	Fremont Stars	55
Northeast	Northeast	590
Northwest	Fremont Stars	35
Northwest	Northwest	689
Rosewood	Rosewood	592
Spring Creek	Spring Creek	782
Tommy's Road	North Drive/Tommy's Road	519



# Review of DRAFT Options

2018-19 ES Zone	2018-19 MS Zone	Total K-5th Live and Attend-In	ES Attendance
Brogden	Brogden	960	100%
Carver	Grantham	1	0%
Carver	Mount Olive	646	100%
Eastern Wayne	Eastern Wayne	596	100%
Fremont Stars	Norwayne	174	100%
Grantham	Grantham	524	100%
Meadow Lane	Greenwood	534	100%
North Drive/Carver Heights	Dillard	1028	100%
Northeast	Norwayne	645	100%
Northwest	Norwayne	724	100%
Rosewood	Rosewood	592	100%
Spring Creek	Greenwood	5	1%
Spring Creek	Spring Creek	923	99%
Tommy's Road	Eastern Wayne	337	65%
Tommy's Road	Norwayne	182	35%

DRAFT Option 5 ES	DRAFT Option 5 MS	Total K-5th Live and Attend-In	ES Attendance
Brogden	Brogden	960	100%
Carver	Mount Olive	647	100%
Carver Heights/Meadowlane	Dillard	663	55%
Carver Heights/Meadowlane	Greenwood	534	45%
Eastern Wayne	Eastern Wayne	596	100%
Fremont Stars	Norwayne	264	100%
Grantham	Grantham	524	100%
North Drive/Tommy's Road	Dillard	547	62%
North Drive/Tommy's Road	Greenwood	337	38%
Northeast	Eastern Wayne	248	42%
Northeast	Norwayne	342	58%
Northwest	Norwayne	689	100%
Rosewood (K-4)	Rosewood (5-8)	592	100%
Spring Creek	Spring Creek	928	100%



# Wayne County Public Schools, NC Middle School Zones DRAFT Option A



**Legend**

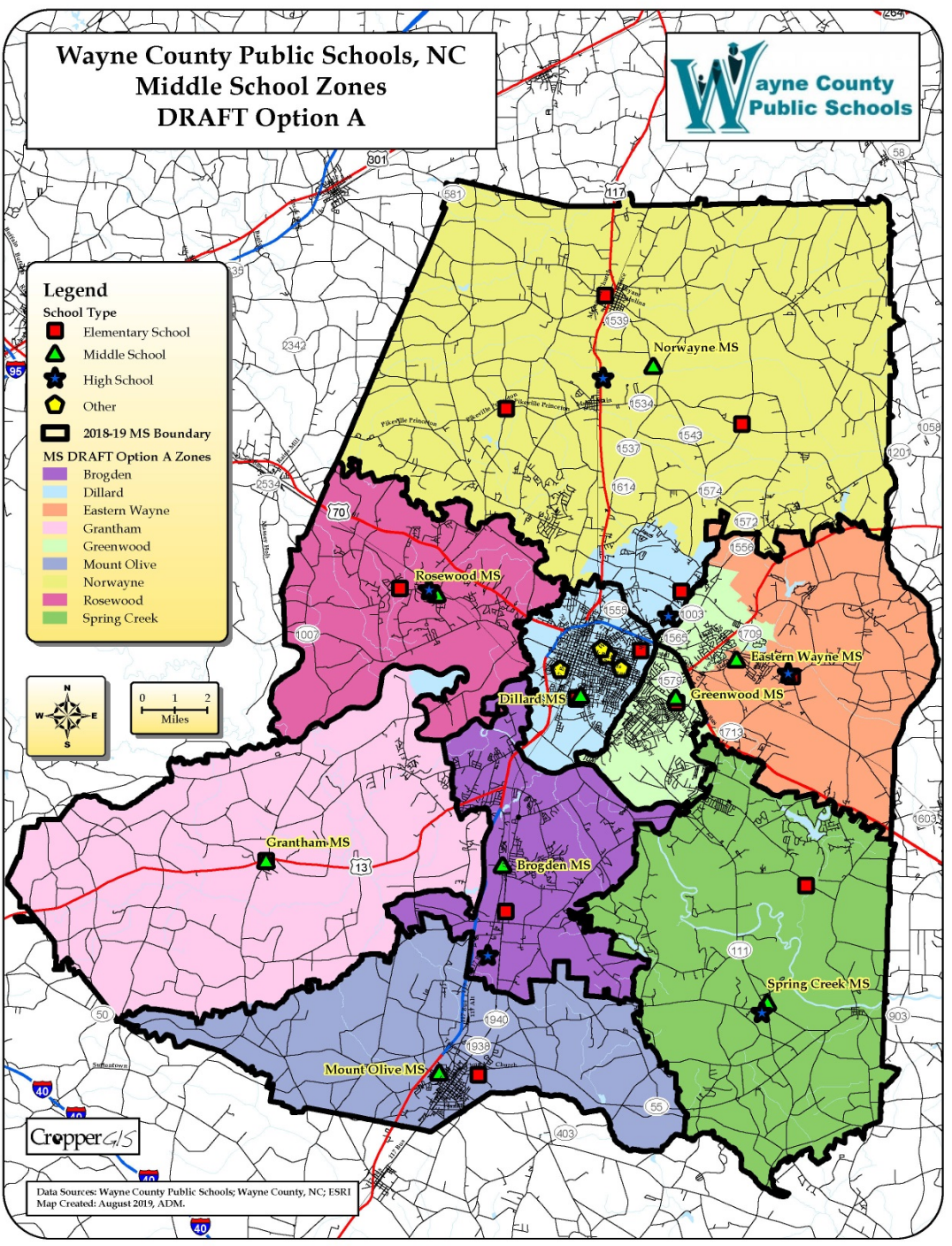
**School Type**

- Elementary School (Red square)
- Middle School (Green triangle)
- High School (Blue star)
- Other (Yellow pentagon)

**2018-19 MS Boundary**

**MS DRAFT Option A Zones**

- Brogden (Purple)
- Dillard (Light Blue)
- Eastern Wayne (Orange)
- Grantham (Pink)
- Greenwood (Light Green)
- Mount Olive (Blue)
- Norwayne (Yellow)
- Rosewood (Magenta)
- Spring Creek (Green)



Data Sources: Wayne County Public Schools; Wayne County, NC; ESRI  
Map Created: August 2019, ADM.



# Wayne County Public Schools, NC Middle School Zones DRAFT Option B



**Legend**

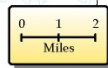
**School Type**

- Elementary School (Red square)
- Middle School (Green triangle)
- High School (Blue star)
- Other (Yellow pentagon)

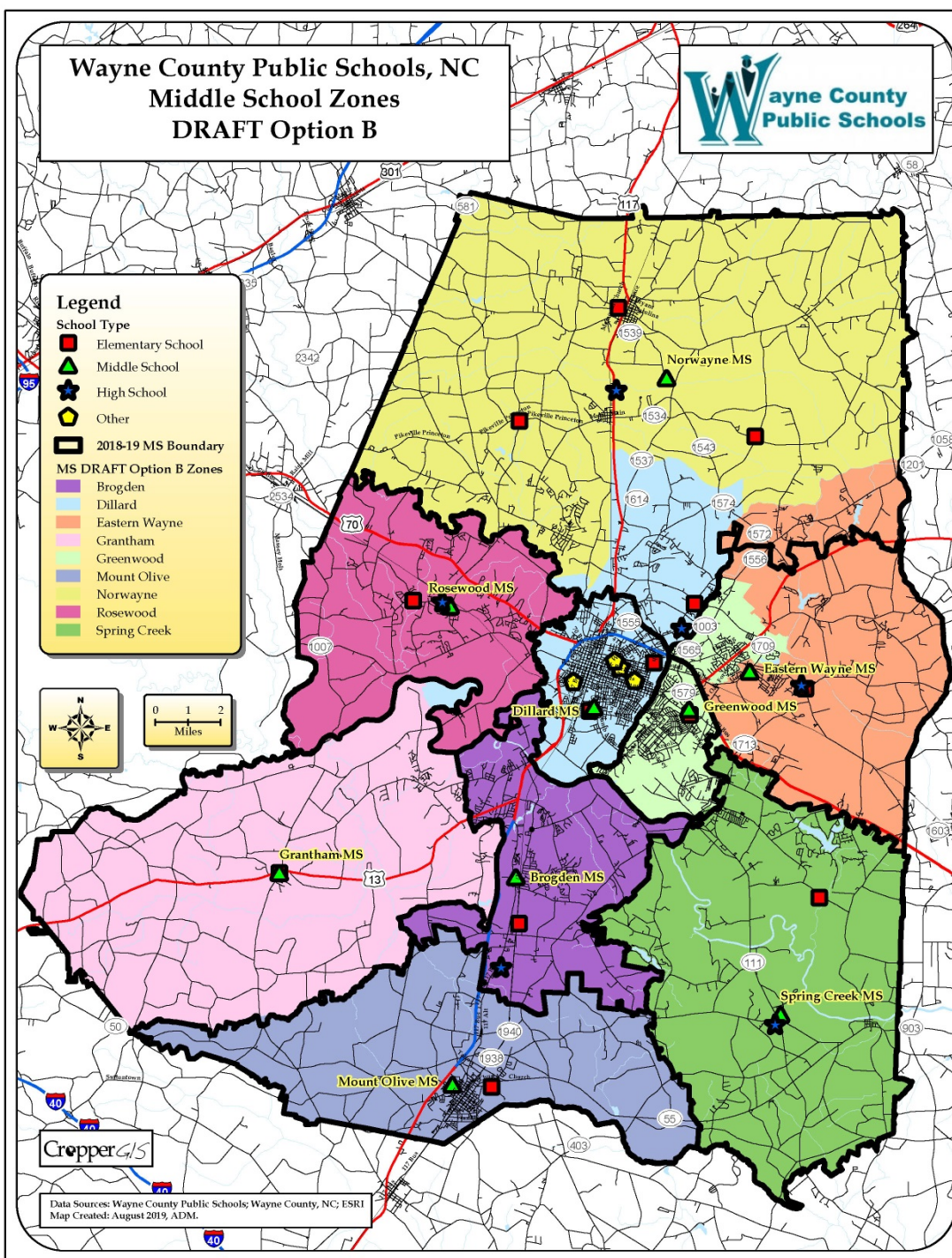
**2018-19 MS Boundary**

**MS DRAFT Option B Zones**

- Brogden (Purple)
- Dillard (Light Blue)
- Eastern Wayne (Orange)
- Grantham (Pink)
- Greenwood (Light Green)
- Mount Olive (Blue)
- Norwayne (Yellow)
- Rosewood (Magenta)
- Spring Creek (Green)



Data Sources: Wayne County Public Schools; Wayne County, NC; ESRI  
Map Created: August 2019, ADM.





Middle School	Grade Config	Option A Grade Config	Option B Grade Config	2018-19 Capacity	Total Enrolled	DRAFT Option A Estimated Enrollment	DRAFT Option B Estimated Enrollment
Brogden Middle School	5-8	5-8	5-8	672	570	570	570
Dillard Middle School	6-8	6-8	6-8	501	366	424	493
Eastern Wayne Middle School	6-8	6-8	6-8	498	537	389	480
Grantham Middle School	5-8	5-8	5-8	423	394	392	392
Greenwood Middle School	5-8	6-8	6-8	563	392	458	458
Mount Olive Middle School	5-8	5-8	5-8	387	386	388	388
Norwayne Middle School	6-8	6-8	6-8	781	887	829	669
Rosewood Middle School	6-8	6-8	6-8	433	333	333	333
Spring Creek Middle School	5-8	5-8	5-8	564	660	660	660
<b>Total</b>				<b>4822</b>	<b>4525</b>	<b>4443</b>	<b>4443</b>

Middle School	Grade Config	Option A Grade Config	Option B Grade Config	2018-19 Capacity	Enrolled Utilization	DRAFT Option A Utilization	DRAFT Option B Utilization
Brogden Middle School	5-8	5-8	5-8	672	85%	85%	85%
Dillard Middle School	6-8	6-8	6-8	501	73%	85%	98%
Eastern Wayne Middle School	6-8	6-8	6-8	498	108%	78%	96%
Grantham Middle School	5-8	5-8	5-8	423	93%	93%	93%
Greenwood Middle School	5-8	6-8	6-8	563	70%	81%	81%
Mount Olive Middle School	5-8	5-8	5-8	387	100%	100%	100%
Norwayne Middle School	6-8	6-8	6-8	781	114%	106%	86%
Rosewood Middle School	6-8	6-8	6-8	433	77%	77%	77%
Spring Creek Middle School	5-8	5-8	5-8	564	117%	117%	117%
<b>Total</b>				<b>4822</b>	<b>94%</b>	<b>92%</b>	<b>92%</b>

Student counts are based on the 10/08/2018 WCPS student database.

The estimated enrollment is calculated by adding the total number students within each new DRAFT option zone that “Live and Attend In” for the grade configuration for that school, plus the students that “Live Out and Attend In” a 2018-19 school, during the 2018-19 school year, plus students attending that school that live outside of the district, plus those students that could not be located in the GIS.



# Review of DRAFT Options

Middle School	Enrolled				
	Percent Black	Percent White	Percent Other	Percent Non-Hispanic	Percent Hispanic
Brogden Middle School	34.7%	11.6%	53.7%	49.1%	50.9%
Dillard Middle School	87.7%	2.2%	10.1%	92.3%	7.7%
Eastern Wayne Middle School	55.9%	24.8%	19.4%	87.7%	12.3%
Grantham Middle School	18.0%	54.8%	27.2%	74.9%	25.1%
Greenwood Middle School	53.6%	21.9%	24.5%	82.4%	17.6%
Mount Olive Middle School	34.7%	23.1%	42.2%	61.4%	38.6%
Norwayne Middle School	22.7%	56.8%	20.5%	87.3%	12.7%
Rosewood Middle School	13.8%	64.6%	21.6%	85.3%	14.7%
Spring Creek Middle School	11.8%	32.6%	55.6%	47.6%	52.4%
<b>Total</b>	<b>34.5%</b>	<b>33.9%</b>	<b>31.7%</b>	<b>73.3%</b>	<b>26.7%</b>

Middle School	Option A				
	Percent Black	Percent White	Percent Other	Percent Non-Hispanic	Percent Hispanic
Brogden Middle School	34.7%	11.6%	53.7%	48.1%	51.9%
Dillard Middle School	79.2%	9.0%	11.8%	91.7%	8.3%
Eastern Wayne Middle School	52.2%	28.3%	19.5%	71.0%	29.0%
Grantham Middle School	18.1%	54.1%	27.8%	67.6%	32.4%
Greenwood Middle School	58.3%	17.9%	23.8%	65.5%	34.5%
Mount Olive Middle School	34.5%	21.9%	43.6%	56.2%	43.8%
Norwayne Middle School	22.4%	56.8%	20.7%	84.9%	15.1%
Rosewood Middle School	13.8%	64.0%	22.2%	76.6%	23.4%
Spring Creek Middle School	11.8%	32.3%	55.9%	42.7%	57.3%
<b>Total</b>	<b>34.2%</b>	<b>33.5%</b>	<b>32.3%</b>	<b>66.7%</b>	<b>33.3%</b>

Middle School	Option B				
	Percent Black	Percent White	Percent Other	Percent Non-Hispanic	Percent Hispanic
Brogden Middle School	34.7%	11.6%	53.7%	48.1%	51.9%
Dillard Middle School	71.4%	16.0%	12.6%	91.1%	8.9%
Eastern Wayne Middle School	46.5%	34.8%	18.8%	74.8%	25.2%
Grantham Middle School	18.1%	54.1%	27.8%	67.6%	32.4%
Greenwood Middle School	58.3%	17.9%	23.8%	65.5%	34.5%
Mount Olive Middle School	34.5%	21.9%	43.6%	56.2%	43.8%
Norwayne Middle School	22.4%	55.8%	21.8%	83.9%	16.1%
Rosewood Middle School	13.8%	64.0%	22.2%	76.6%	23.4%
Spring Creek Middle School	11.8%	32.3%	55.9%	42.7%	57.3%
<b>Total</b>	<b>34.2%</b>	<b>33.5%</b>	<b>32.3%</b>	<b>66.7%</b>	<b>33.3%</b>

Student counts are based on the 10/08/2018 WCPS student database.

The estimated enrollment is calculated by adding the total number students within each new DRAFT option zone that "Live and Attend In" for the grade configuration for that school, plus the students that "Live Out and Attend In" a 2018-19 school, during the 2018-19 school year, plus students attending that school that live outside of the district, plus those students that could not be located in the GIS.



# Review of DRAFT Options

Option	Total Grade Config Live and Attend In Students Impacted
Option A	281
Option B	441

The Impact of Options A and B also includes 73 5th grade students from Meadowlane ES change from Middle School to Elementary School.

MS Zone 2019-20	DRAFT Option A MS Zone	Total Grade Config Live and Attend In Students
Brogden	Brogden	562
Dillard	Dillard	365
Eastern Wayne	Eastern Wayne	326
Eastern Wayne	Greenwood	148
Grantham	Grantham	361
Grantham	Mount Olive	2
Greenwood	Greenwood	197
Mount Olive	Mount Olive	358
Norwayne	Dillard	58
Norwayne	Norwayne	809
Rosewood	Rosewood (5-8)	292
Spring Creek	Spring Creek	614

MS Zone 2019-20	DRAFT Option B MS Zone	Total Grade Config Live and Attend In Students
Brogden	Brogden	562
Dillard	Dillard	365
Eastern Wayne	Eastern Wayne	326
Eastern Wayne	Greenwood	148
Grantham	Grantham	361
Grantham	Mount Olive	2
Greenwood	Greenwood	197
Mount Olive	Mount Olive	358
Norwayne	Dillard	127
Norwayne	Eastern Wayne	91
Norwayne	Norwayne	649
Rosewood	Rosewood (5-8)	292
Spring Creek	Spring Creek	614



# Review of DRAFT Options

2018-19 MS Zone	2018-19 HS Zone	Total 5-8th Live and Attend-In	MS Attendance
Brogden	Southern Wayne	375	67%
Brogden	Spring Creek	187	33%
Dillard	Goldsboro	501	100%
Eastern Wayne	Eastern Wayne	642	100%
Grantham	Southern Wayne	363	100%
Greenwood	Eastern Wayne	199	74%
Greenwood	Spring Creek	71	26%
Mount Olive	Southern Wayne	358	100%
Norwayne	Aycock	1145	100%
Rosewood	Rosewood	410	100%
Spring Creek	Spring Creek	614	100%

DRAFT Option A MS Zone	DRAFT Option A HS Zone	Total 5-8th Live and Attend-In	MS Attendance
Brogden	Southern Wayne	375	67%
Brogden	Spring Creek	187	33%
Dillard	Eastern Wayne	179	30%
Dillard	Goldsboro	412	70%
Eastern Wayne	Eastern Wayne	442	100%
Grantham	Southern Wayne	361	100%
Greenwood	Eastern Wayne	470	100%
Mount Olive	Southern Wayne	360	100%
Norwayne	Aycock	1055	100%
Rosewood	Rosewood	410	100%
Spring Creek	Spring Creek	614	100%

DRAFT Option B MS Zone	DRAFT Option B HS Zone	Total 5-8th Live and Attend-In	MS Attendance
Brogden	Southern Wayne	375	67%
Brogden	Spring Creek	187	33%
Dillard	Eastern Wayne	179	26%
Dillard	Goldsboro	499	74%
Eastern Wayne	Aycock	127	22%
Eastern Wayne	Eastern Wayne	442	78%
Grantham	Southern Wayne	361	100%
Greenwood	Eastern Wayne	470	100%
Mount Olive	Southern Wayne	360	100%
Norwayne	Aycock	841	100%
Rosewood	Rosewood	410	100%
Spring Creek	Spring Creek	614	100%





# Wayne County Public Schools, NC High School Zones DRAFT Option A



**Legend**

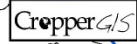
**School Type**

- Elementary School
- Middle School
- High School
- Other

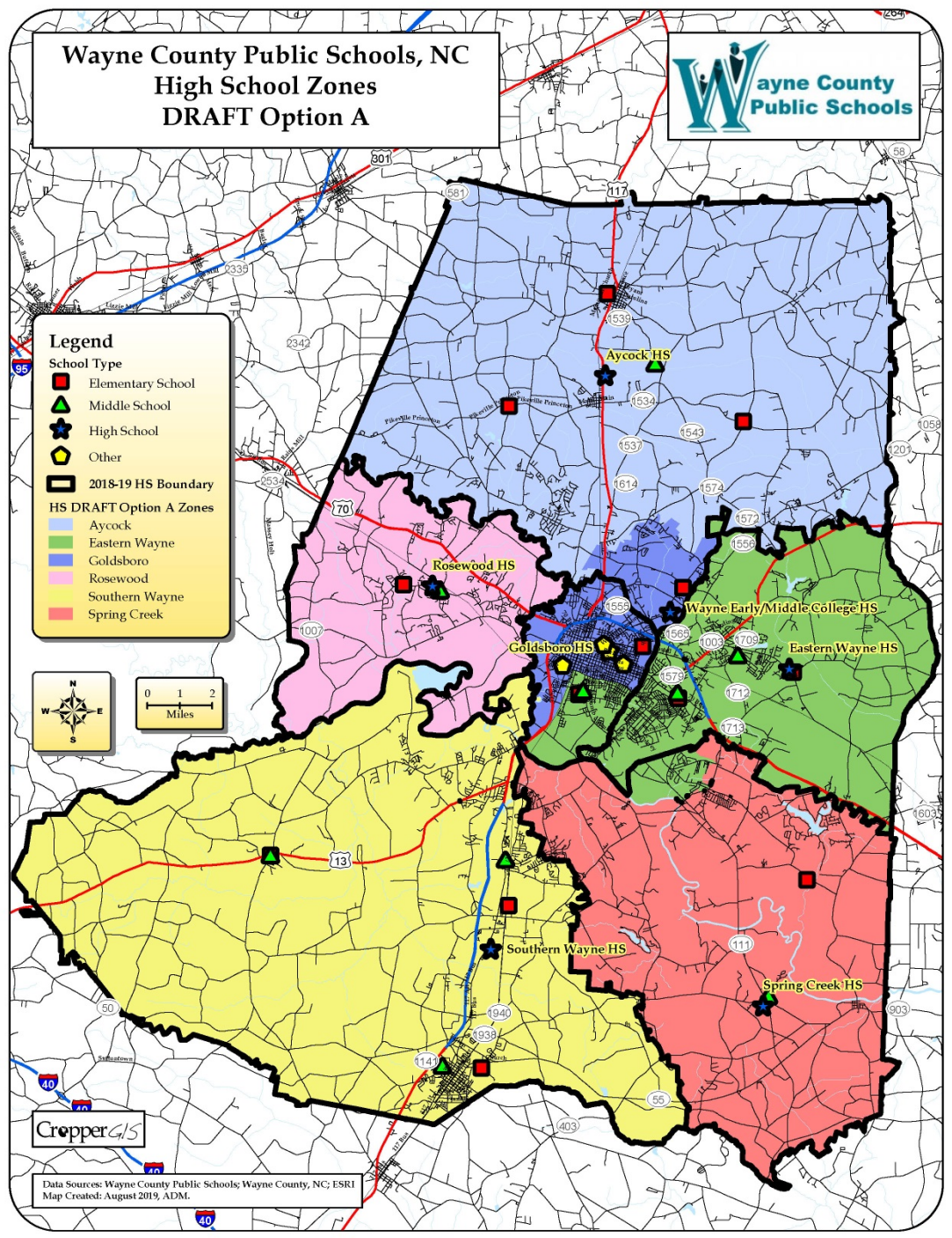
**2018-19 HS Boundary**

**HS DRAFT Option A Zones**

- Aycock
- Eastern Wayne
- Goldsboro
- Rosewood
- Southern Wayne
- Spring Creek



Data Sources: Wayne County Public Schools; Wayne County, NC; ESRI  
Map Created: August 2019, ADM.





# Wayne County Public Schools, NC High School Zones DRAFT Option B



**Legend**

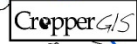
**School Type**

- Elementary School
- Middle School
- High School
- Other

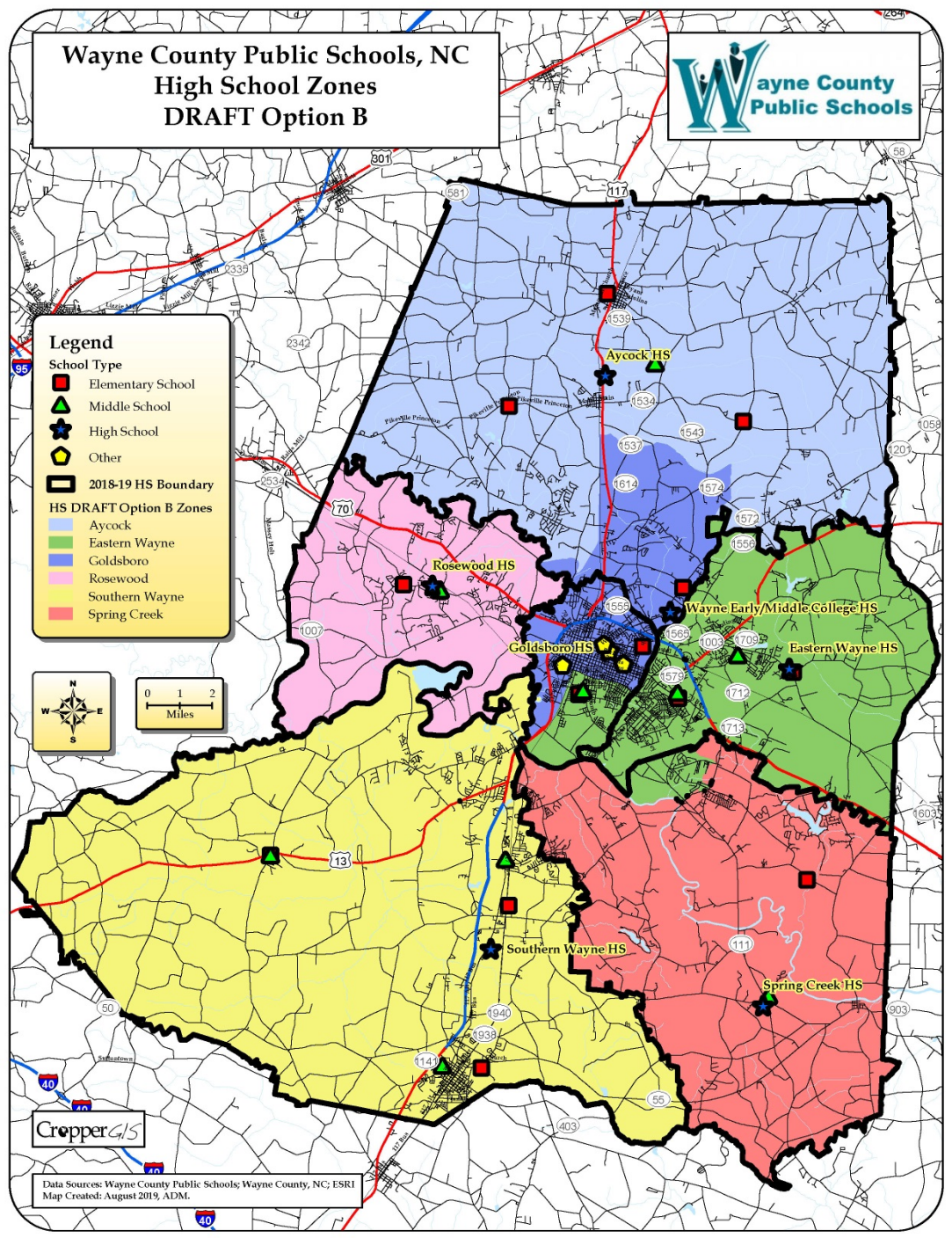
**2018-19 HS Boundary**

**HS DRAFT Option B Zones**

- Aycock
- Eastern Wayne
- Goldsboro
- Rosewood
- Southern Wayne
- Spring Creek



Data Sources: Wayne County Public Schools; Wayne County, NC; ESRI  
Map Created: August 2019, ADM.





High School	Grade Config	2018-19 Capacity	Total Enrolled	DRAFT Option A Estimated Enrollment	DRAFT Option B Estimated Enrollment
Charles B. Aycock High School	9-12	1296	1164	1087	981
Eastern Wayne High School	9-12	1403	965	1243	1243
Goldsboro High School	9-12	672	574	432	538
Rosewood High School	9-12	556	499	499	499
Southern Wayne High School	9-12	1219	1083	1083	1083
Spring Creek High School	9-12	773	714	655	655
<b>Total</b>		<b>5919</b>	<b>4999</b>	<b>4999</b>	<b>4999</b>

High School	Grade Config	2018-19 Capacity	Enrolled Utilization	DRAFT Option A Utilization	DRAFT Option B Utilization
Charles B. Aycock High School	9-12	1296	90%	84%	76%
Eastern Wayne High School	9-12	1403	69%	89%	89%
Goldsboro High School	9-12	672	85%	64%	80%
Rosewood High School	9-12	556	90%	90%	90%
Southern Wayne High School	9-12	1219	89%	89%	89%
Spring Creek High School	9-12	773	92%	85%	85%
<b>Total</b>		<b>5919</b>	<b>84%</b>	<b>84%</b>	<b>84%</b>

Student counts are based on the 10/08/2018 WCPS student

The estimated enrollment is calculated by adding the total number students within each new DRAFT option zone that “Live and Attend In” for the grade configuration for that school, plus the students that “Live Out and Attend In” a 2018-19 school, during the 2018-19 school year, plus students attending that school that live outside of the district, plus those students that could not be located in the GIS.



# Review of DRAFT Options

High School	Enrolled				
	Percent Black	Percent White	Percent Other	Percent Non-Hispanic	Percent Hispanic
Charles B. Aycock High School	21.0%	60.6%	18.4%	88.0%	12.0%
Eastern Wayne High School	52.2%	29.5%	18.2%	86.7%	13.3%
Goldsboro High School	90.1%	3.0%	7.0%	95.3%	4.7%
Rosewood High School	15.2%	64.9%	19.8%	88.2%	11.8%
Southern Wayne High School	35.5%	29.2%	35.4%	68.0%	32.0%
Spring Creek High School	16.2%	30.8%	52.9%	51.7%	48.3%
<b>Total</b>	<b>36.8%</b>	<b>37.3%</b>	<b>25.8%</b>	<b>79.1%</b>	<b>20.9%</b>

High School	Option A				
	Percent Black	Percent White	Percent Other	Percent Non-Hispanic	Percent Hispanic
Charles B. Aycock High School	20.7%	61.1%	18.2%	87.9%	12.1%
Eastern Wayne High School	58.1%	24.2%	17.7%	87.0%	13.0%
Goldsboro High School	77.3%	13.0%	9.7%	93.8%	6.3%
Rosewood High School	15.2%	64.9%	19.8%	88.2%	11.8%
Southern Wayne High School	35.5%	29.2%	35.4%	68.0%	32.0%
Spring Creek High School	15.4%	31.5%	53.1%	51.1%	48.9%
<b>Total</b>	<b>36.8%</b>	<b>37.3%</b>	<b>25.8%</b>	<b>79.1%</b>	<b>20.9%</b>

High School	Option B				
	Percent Black	Percent White	Percent Other	Percent Non-Hispanic	Percent Hispanic
Charles B. Aycock High School	21.2%	59.6%	19.2%	87.2%	12.8%
Eastern Wayne High School	58.1%	24.2%	17.7%	87.0%	13.0%
Goldsboro High School	65.2%	25.1%	9.7%	75.3%	5.0%
Rosewood High School	15.2%	64.9%	19.8%	88.2%	11.8%
Southern Wayne High School	35.5%	29.2%	35.4%	68.0%	32.0%
Spring Creek High School	15.4%	31.5%	53.1%	51.1%	48.9%
<b>Total</b>	<b>36.8%</b>	<b>37.3%</b>	<b>25.8%</b>	<b>77.1%</b>	<b>20.8%</b>

Student counts are based on the 10/08/2018 WCPS student database.

The estimated enrollment is calculated by adding the total number students within each new DRAFT option zone that “Live and Attend In” for the grade configuration for that school, plus the students that “Live Out and Attend In” a 2018-19 school, during the 2018-19 school year, plus students attending that school that live outside of the district, plus those students that could not be located in the GIS.



# Review of DRAFT Options

Option	Total Grade Config Live and Attend In Students Impacted
Option A	355
Option B	461

HS Zone 2019-20	DRAFT Option A HS Zone	Total Grade Config Live and Attend In Students
Aycock	Aycock	1051
Aycock	Goldsboro	77
Eastern Wayne	Eastern Wayne	804
Goldsboro	Eastern Wayne	219
Goldsboro	Goldsboro	336
Rosewood	Rosewood	425
Southern Wayne	Southern Wayne	1046
Spring Creek	Eastern Wayne	59
Spring Creek	Spring Creek	626

HS Zone 2019-20	DRAFT Option B HS Zone	Total Grade Config Live and Attend In Students
Aycock	Aycock	945
Aycock	Goldsboro	183
Eastern Wayne	Eastern Wayne	804
Goldsboro	Eastern Wayne	219
Goldsboro	Goldsboro	336
Rosewood	Rosewood	425
Southern Wayne	Southern Wayne	1046
Spring Creek	Eastern Wayne	59
Spring Creek	Spring Creek	626