



Wayne County Public Schools, NC Realignment Study 2020

Options Statistics

Revised: 09/17/2019

Enrollment Statistics Assumptions

The following document contains a series of tables and maps that depict statistics for current schools and boundaries, as well as redistricting options that are being evaluated. This information will help inform all committee members on how schools could be potentially impacted as a result of potential redistricting adjustments, along with a comparison to current school information

When estimating enrollment for the redistricting options, a series of assumptions were made. These assumptions help to ensure that special programs are not compromised by any redistricting adjustment, and that actual enrollments will materialize as close to the estimates as possible. The following assumptions were made:

Option A:

1. Meadowlane ES joins the North Drive ES and Carver Heights ES pairing.
2. The K-1st grade students would be at Meadowlane ES, the 2nd-3rd grade students would be at Carver Heights ES, and the 4th-5th grade students would be at North Drive ES.
3. Greenwood MS grade configuration changes to 6-8th

Option B:

1. North Drive ES and Tommy's Road ES are paired in this option. K-1st grade students would be at North Drive ES, and 2nd-5th grade students would be Tommy's Road ES.
2. Carver Heights ES and Meadowlane ES are paired in this option. K-1st grade students would be at Carver Heights ES, and 2nd-5th grade students would be Meadowlane ES.
3. Greenwood MS grade configuration changes to 6-8th

Option 6:

1. North Drive ES and Tommy's Road ES are paired in this option. K-1st grade students would be at North Drive ES, and 2nd-5th grade students would be Tommy's Road ES.
2. Carver Heights ES and Meadowlane ES are paired in this option. K-1st grade students would be at Carver Heights ES, and 2nd-5th grade students would be Meadowlane ES.
3. Greenwood MS grade configuration changes to 6-8th

Elementary School Options Estimated Enrollment Statistics

Elementary School	2018-19 Capacity	Total Enrolled	DRAFT Option A Estimated Enrollment	DRAFT Option B Estimated Enrollment	DRAFT Option 6 Estimated Enrollment
Brogden Primary School	750	789	789	789	789
Carver Elementary School	518	563	563	563	563
Carver Heights Elementary School	586	450	570	495	495
Eastern Wayne Elementary School	617	664	664	664	664
Fremont Elementary School	308	246	336	336	336
Grantham Elementary School	396	445	445	445	445
Meadowlane Elementary School	723	561	643	820	820
North Drive Elementary School	498	597	477	382	382
Northeast Elementary School	585	685	630	630	630
Northwest Elementary School	667	752	717	717	717
Rosewood Elementary School	590	635	635	635	635
Spring Creek Elementary School	726	831	831	831	831
Tommy's Road Elementary School	603	673	673	666	666
Total	7567	7891	7973	7973	7973

Elementary School	2018-19 Capacity	Enrolled Utilization	DRAFT Option A Utilization	DRAFT Option B Utilization	DRAFT Option 6 Utilization
Brogden Primary School	750	105%	105%	105%	105%
Carver Elementary School	518	109%	109%	109%	109%
Carver Heights Elementary School	586	77%	97%	84%	84%
Eastern Wayne Elementary School	617	108%	108%	108%	108%
Fremont Elementary School	308	80%	109%	109%	109%
Grantham Elementary School	396	112%	112%	112%	112%
Meadowlane Elementary School	723	78%	89%	113%	113%
North Drive Elementary School	498	120%	96%	77%	77%
Northeast Elementary School	585	117%	108%	108%	108%
Northwest Elementary School	667	113%	107%	107%	107%
Rosewood Elementary School	590	108%	108%	108%	108%
Spring Creek Elementary School	726	114%	114%	114%	114%
Tommy's Road Elementary School	603	112%	112%	110%	110%
Total	7567	104%	105%	105%	105%

Student counts are based on the 10/08/2018 WCPS student database.

DRAFT option zone that "Live and Attend In" for the grade configuration for that school, plus the students that "Live Out and Attend In" a 2018-19 school, during the 2018-19 school year, plus students attending that school that live outside of the district, plus those students that could not be located in the GIS.

Elementary School Options Demographics Statistics

Elementary School	Enrolled				
	Percent Black	Percent White	Percent Other	Percent Non-Hispanic	Percent Hispanic
Brogden Primary School	34.3%	10.4%	55.3%	46.8%	53.2%
Carver Elementary School	40.5%	18.8%	40.7%	62.3%	37.7%
Carver Heights Elementary School	91.3%	3.1%	5.6%	96.2%	3.8%
Eastern Wayne Elementary School	45.2%	26.8%	28.0%	77.9%	22.1%
Fremont Elementary School	19.1%	59.8%	21.1%	85.8%	14.2%
Grantham Elementary School	18.7%	54.8%	26.5%	76.0%	24.0%
Meadowlane Elementary School	36.0%	34.8%	29.2%	83.6%	16.4%
North Drive Elementary School	88.4%	3.2%	8.4%	94.3%	5.7%
Northeast Elementary School	22.3%	54.3%	23.4%	85.5%	14.5%
Northwest Elementary School	20.1%	62.0%	18.0%	88.7%	11.3%
Rosewood Elementary School	10.9%	65.2%	23.9%	86.3%	13.7%
Spring Creek Elementary School	10.7%	27.7%	61.6%	40.6%	59.4%
Tommy's Road Elementary School	48.3%	31.9%	19.8%	89.5%	10.5%
Total	36.2%	34.0%	29.8%	75.9%	24.1%

Elementary School	Option A				
	Percent Black	Percent White	Percent Other	Percent Non-Hispanic	Percent Hispanic
Brogden Primary School	34.3%	10.4%	55.3%	46.8%	53.2%
Carver Elementary School	40.5%	18.8%	40.7%	62.3%	37.7%
Carver Heights Elementary School	69.3%	14.6%	16.1%	89.8%	10.2%
Eastern Wayne Elementary School	45.2%	26.8%	28.0%	77.9%	22.1%
Fremont Elementary School	23.2%	57.4%	19.3%	86.0%	14.0%
Grantham Elementary School	18.7%	54.8%	26.5%	76.0%	24.0%
Meadowlane Elementary School	66.9%	16.5%	16.6%	90.7%	9.3%
North Drive Elementary School	74.6%	13.4%	11.9%	92.7%	7.3%
Northeast Elementary School	20.3%	55.7%	24.0%	85.7%	14.3%
Northwest Elementary School	20.2%	61.5%	18.3%	88.6%	11.4%
Rosewood Elementary School	10.9%	65.2%	23.9%	86.3%	13.7%
Spring Creek Elementary School	10.7%	27.7%	61.6%	40.6%	59.4%
Tommy's Road Elementary School	48.3%	31.9%	19.8%	89.5%	10.5%
Total	36.3%	34.0%	29.7%	76.0%	24.0%

Student counts are based on the 10/08/2018 WCPS student database.

The estimated enrollment is calculated by adding the total number students within each new DRAFT option zone that "Live and Attend In" for the grade configuration for that school, plus the students that "Live Out and Attend In" a 2018-19 school, during the 2018-19 school year, plus students attending that school that live outside of the district, plus those students that could not be located in the GIS.

Elementary School Options Demographics Statistics (Continued)

Elementary School	Option B				
	Percent Black	Percent White	Percent Other	Percent Non-Hispanic	Percent Hispanic
Brogden Primary School	34.3%	10.4%	55.3%	46.8%	53.2%
Carver Elementary School	40.5%	18.8%	40.7%	62.3%	37.7%
Carver Heights Elementary School	61.0%	20.4%	18.6%	89.5%	10.5%
Eastern Wayne Elementary School	45.2%	26.8%	28.0%	77.9%	22.1%
Fremont Elementary School	23.2%	57.4%	19.3%	86.0%	14.0%
Grantham Elementary School	18.7%	54.8%	26.5%	76.0%	24.0%
Meadowlane Elementary School	67.4%	16.7%	15.9%	90.4%	9.6%
North Drive Elementary School	61.0%	19.9%	19.1%	89.8%	10.2%
Northeast Elementary School	20.3%	55.7%	24.0%	85.7%	14.3%
Northwest Elementary School	20.2%	61.5%	18.3%	88.6%	11.4%
Rosewood Elementary School	10.9%	65.2%	23.9%	86.3%	13.7%
Spring Creek Elementary School	10.7%	27.7%	61.6%	40.6%	59.4%
Tommy's Road Elementary School	62.8%	23.1%	14.1%	91.9%	8.1%
Total	36.3%	34.0%	29.7%	76.0%	24.0%

Elementary School	Option 6				
	Percent Black	Percent White	Percent Other	Percent Non-Hispanic	Percent Hispanic
Brogden Primary School	34.3%	10.4%	55.3%	46.8%	53.2%
Carver Elementary School	40.5%	18.8%	40.7%	62.3%	37.7%
Carver Heights Elementary School	61.0%	20.4%	18.6%	89.5%	10.5%
Eastern Wayne Elementary School	45.2%	26.8%	28.0%	77.9%	22.1%
Fremont Elementary School	23.2%	57.4%	19.3%	86.0%	14.0%
Grantham Elementary School	18.7%	54.8%	26.5%	76.0%	24.0%
Meadowlane Elementary School	67.4%	16.7%	15.9%	90.4%	9.6%
North Drive Elementary School	61.0%	19.9%	19.1%	89.8%	10.2%
Northeast Elementary School	20.3%	55.7%	24.0%	85.7%	14.3%
Northwest Elementary School	20.2%	61.5%	18.3%	88.6%	11.4%
Rosewood Elementary School	10.9%	65.2%	23.9%	86.3%	13.7%
Spring Creek Elementary School	10.7%	27.7%	61.6%	40.6%	59.4%
Tommy's Road Elementary School	62.8%	23.1%	14.1%	91.9%	8.1%
Total	36.3%	34.0%	29.7%	76.0%	24.0%

Student counts are based on the 10/08/2018 WCPS student database.

The estimated enrollment is calculated by adding the total number students within each new DRAFT option zone that "Live and Attend In" for the grade configuration for that school, plus the students that "Live Out and Attend In" a 2018-19 school, during the 2018-19 school year, plus students attending that school that live outside of the district, plus those students that could not be located in the GIS.

Elementary School Option Impacts

Option	Total K-5th Live-In Students Impacted
Option A	163
Option B	163
Option 6	163

The Impact of Options A, B, and 6 also includes 73 5th grade students from Meadowlane ES change from Middle School to Elementary School.

ES Zone 2019-20	DRAFT Option A ES Zone	Total Grade Config Live and Attend In Students
Brogden	Brogden	769
Carver	Carver	549
Eastern Wayne	Eastern Wayne	596
Fremont Stars	Fremont Stars	174
Grantham	Grantham	421
Meadow Lane	North Drive/Carver Heights/Meadow Lane	534
North Drive/Carver Heights	North Drive/Carver Heights/Meadow Lane	1028
Northeast	Fremont Stars	55
Northeast	Northeast	590
Northwest	Fremont Stars	35
Northwest	Northwest	689
Rosewood	Rosewood	592
Spring Creek	Spring Creek	782
Tommy's Road	Tommy's Road	519

ES Zone 2019-20	DRAFT Option B ES Zone	Total Grade Config Live and Attend In Students
Brogden	Brogden	769
Carver	Carver	549
Eastern Wayne	Eastern Wayne	596
Fremont Stars	Fremont Stars	174
Grantham	Grantham	421
Meadow Lane	Carver Heights/Meadowlane	534
North Drive/Carver Heights	Carver Heights/Meadowlane	663
North Drive/Carver Heights	North Drive/Tommy's Road	365
Northeast	Fremont Stars	55
Northeast	Northeast	590
Northwest	Fremont Stars	35
Northwest	Northwest	689
Rosewood	Rosewood	592
Spring Creek	Spring Creek	782
Tommy's Road	North Drive/Tommy's Road	519

ES Zone 2019-20	DRAFT Option 6 ES Zone	Total Grade Config Live and Attend In Students
Brogden	Brogden	769
Carver	Carver	549
Eastern Wayne	Eastern Wayne	596
Fremont Stars	Fremont Stars	174
Grantham	Grantham	421
Meadow Lane	Carver Heights/Meadowlane	534
North Drive/Carver Heights	Carver Heights/Meadowlane	663
North Drive/Carver Heights	North Drive/Tommy's Road	365
Northeast	Fremont Stars	55
Northeast	Northeast	590
Northwest	Fremont Stars	35
Northwest	Northwest	689
Rosewood	Rosewood	592
Spring Creek	Spring Creek	782
Tommy's Road	North Drive/Tommy's Road	519

ES to MS Feeder Pattern

2018-19 ES Zone	2018-19 MS Zone	Total K-5th Live and Attend-In	ES Attendance
Brogden	Brogden	960	100%
Carver	Grantham	1	0%
Carver	Mount Olive	646	100%
Eastern Wayne	Eastern Wayne	596	100%
Fremont Stars	Norwayne	174	100%
Grantham	Grantham	524	100%
Meadow Lane	Greenwood	534	100%
North Drive/Carver Heights	Dillard	1028	100%
Northeast	Norwayne	645	100%
Northwest	Norwayne	724	100%
Rosewood	Rosewood	592	100%
Spring Creek	Greenwood	5	1%
Spring Creek	Spring Creek	923	99%
Tommy's Road	Eastern Wayne	337	65%
Tommy's Road	Norwayne	182	35%

DRAFT Option A ES	DRAFT Option A MS	Total K-5th Live and Attend-In	ES Attendance
Brogden	Brogden	960	100%
Carver	Mount Olive	647	100%
Eastern Wayne	Eastern Wayne	596	100%
Fremont Stars	Norwayne	264	100%
Grantham	Grantham	524	100%
North Drive/Carver Heights/Meadow Lane	Dillard	1028	66%
North Drive/Carver Heights/Meadow Lane	Greenwood	534	34%
Northeast	Norwayne	590	100%
Northwest	Norwayne	689	100%
Rosewood	Rosewood	592	100%
Spring Creek	Spring Creek	928	100%
Tommy's Road	Dillard	182	35%
Tommy's Road	Greenwood	337	65%

DRAFT Option B ES	DRAFT Option B MS	Total K-5th Live and Attend-In	ES Attendance
Brogden	Brogden	960	100%
Carver	Mount Olive	647	100%
Carver Heights/Meadowlane	Dillard	663	55%
Carver Heights/Meadowlane	Greenwood	534	45%
Eastern Wayne	Eastern Wayne	596	100%
Fremont Stars	Norwayne	264	100%
Grantham	Grantham	524	100%
North Drive/Tommy's Road	Dillard	547	62%
North Drive/Tommy's Road	Greenwood	337	38%
Northeast	Eastern Wayne	248	42%
Northeast	Norwayne	342	58%
Northwest	Norwayne	689	100%
Rosewood	Rosewood	592	100%
Spring Creek	Spring Creek	928	100%

DRAFT Option 6 ES	DRAFT Option 6 MS	Total K-5th Live and Attend-In	ES Attendance
Brogden	Brogden	960	100%
Carver	Mount Olive	647	100%
Carver Heights/Meadowlane	Dillard	744	62%
Carver Heights/Meadowlane	Greenwood	453	38%
Eastern Wayne	Eastern Wayne	596	100%
Fremont Stars	Norwayne	264	100%
Grantham	Grantham	524	100%
North Drive/Tommy's Road	Dillard	609	69%
North Drive/Tommy's Road	Greenwood	275	31%
Northeast	Eastern Wayne	248	42%
Northeast	Norwayne	342	58%
Northwest	Norwayne	689	100%
Rosewood (K-4)	Rosewood (5-8)	592	100%
Spring Creek	Spring Creek	928	100%

Middle School Options Estimated Enrollment Statistics

Middle School	2018-19 Capacity	Total Enrolled	DRAFT Option A Estimated Enrollment	DRAFT Option B Estimated Enrollment	DRAFT Option 6 Estimated Enrollment
Brogden Middle School	672	570	570	570	570
Dillard Middle School	501	366	424	493	490
Eastern Wayne Middle School	498	537	389	480	480
Grantham Middle School	423	394	392	392	392
Greenwood Middle School	563	392	458	458	392
Mount Olive Middle School	387	386	388	388	388
Norwayne Middle School	781	887	829	669	738
Rosewood Middle School	433	333	333	333	333
Spring Creek Middle School	564	660	660	660	660
Total	4822	4525	4443	4443	4443

Middle School	2018-19 Capacity	Enrolled Utilization	DRAFT Option A Utilization	DRAFT Option B Utilization	DRAFT Option 6 Utilization
Brogden Middle School	672	85%	85%	85%	85%
Dillard Middle School	501	73%	85%	98%	98%
Eastern Wayne Middle School	498	108%	78%	96%	96%
Grantham Middle School	423	93%	93%	93%	93%
Greenwood Middle School	563	70%	81%	81%	70%
Mount Olive Middle School	387	100%	100%	100%	100%
Norwayne Middle School	781	114%	106%	86%	94%
Rosewood Middle School	433	77%	77%	77%	77%
Spring Creek Middle School	564	117%	117%	117%	117%
Total	4822	94%	92%	92%	92%

Student counts are based on the 10/08/2018 WCPS student database.

The estimated enrollment is calculated by adding the total number students within each new DRAFT option zone that “Live and Attend In” for the grade configuration for that school, plus the students that “Live Out and Attend In” a 2018-19 school, during the 2018-19 school year, plus students attending that school that live outside of the district, plus those students that could not be located in the GIS.

Middle School Options Demographics Statistics

Middle School	Enrolled				
	Percent Black	Percent White	Percent Other	Percent Non-Hispanic	Percent Hispanic
Brogden Middle School	34.7%	11.6%	53.7%	49.1%	50.9%
Dillard Middle School	87.7%	2.2%	10.1%	92.3%	7.7%
Eastern Wayne Middle School	55.9%	24.8%	19.4%	87.7%	12.3%
Grantham Middle School	18.0%	54.8%	27.2%	74.9%	25.1%
Greenwood Middle School	53.6%	21.9%	24.5%	82.4%	17.6%
Mount Olive Middle School	34.7%	23.1%	42.2%	61.4%	38.6%
Norwayne Middle School	22.7%	56.8%	20.5%	87.3%	12.7%
Rosewood Middle School	13.8%	64.6%	21.6%	85.3%	14.7%
Spring Creek Middle School	11.8%	32.6%	55.6%	47.6%	52.4%
Total	34.5%	33.9%	31.7%	73.3%	26.7%

Middle School	Option A				
	Percent Black	Percent White	Percent Other	Percent Non-Hispanic	Percent Hispanic
Brogden Middle School	34.7%	11.6%	53.7%	48.1%	51.9%
Dillard Middle School	79.2%	9.0%	11.8%	91.7%	8.3%
Eastern Wayne Middle School	52.2%	28.3%	19.5%	71.0%	29.0%
Grantham Middle School	18.1%	54.1%	27.8%	67.6%	32.4%
Greenwood Middle School	58.3%	17.9%	23.8%	65.5%	34.5%
Mount Olive Middle School	34.5%	21.9%	43.6%	56.2%	43.8%
Norwayne Middle School	22.4%	56.8%	20.7%	84.9%	15.1%
Rosewood Middle School	13.8%	64.0%	22.2%	76.6%	23.4%
Spring Creek Middle School	11.8%	32.3%	55.9%	42.7%	57.3%
Total	34.2%	33.5%	32.3%	66.7%	33.3%

Student counts are based on the 10/08/2018 WCPS student database.

The estimated enrollment is calculated by adding the total number students within each new DRAFT option zone that “Live and Attend In” for the grade configuration for that school, plus the students that “Live Out and Attend In” a 2018-19 school, during the 2018-19 school year, plus students attending that school that live outside of the district, plus those students that could not be located in the GIS.

Middle School Options Demographics Statistics (Continued)

Middle School	Option B				
	Percent Black	Percent White	Percent Other	Percent Non-Hispanic	Percent Hispanic
Brogden Middle School	34.7%	11.6%	53.7%	48.1%	51.9%
Dillard Middle School	71.4%	16.0%	12.6%	91.1%	8.9%
Eastern Wayne Middle School	46.5%	34.8%	18.8%	74.8%	25.2%
Grantham Middle School	18.1%	54.1%	27.8%	67.6%	32.4%
Greenwood Middle School	58.3%	17.9%	23.8%	65.5%	34.5%
Mount Olive Middle School	34.5%	21.9%	43.6%	56.2%	43.8%
Norwayne Middle School	22.4%	55.8%	21.8%	83.9%	16.1%
Rosewood Middle School	13.8%	64.0%	22.2%	76.6%	23.4%
Spring Creek Middle School	11.8%	32.3%	55.9%	42.7%	57.3%
Total	34.2%	33.5%	32.3%	66.7%	33.3%

Middle School	Option 6				
	Percent Black	Percent White	Percent Other	Percent Non-Hispanic	Percent Hispanic
Brogden Middle School	34.7%	11.6%	53.7%	48.1%	51.9%
Dillard Middle School	79.0%	9.0%	12.0%	91.4%	8.6%
Eastern Wayne Middle School	46.5%	34.8%	18.8%	74.8%	25.2%
Grantham Middle School	18.1%	54.1%	27.8%	67.6%	32.4%
Greenwood Middle School	55.1%	19.4%	25.5%	61.5%	38.5%
Mount Olive Middle School	34.5%	21.9%	43.6%	56.2%	43.8%
Norwayne Middle School	22.5%	56.1%	21.4%	84.1%	15.9%
Rosewood Middle School	13.8%	64.0%	22.2%	76.6%	23.4%
Spring Creek Middle School	11.8%	32.3%	55.9%	42.7%	57.3%
Total	34.2%	33.5%	32.3%	66.7%	33.3%

Student counts are based on the 10/08/2018 WCPS student database.

The estimated enrollment is calculated by adding the total number students within each new DRAFT option zone that “Live and Attend In” for the grade configuration for that school, plus the students that “Live Out and Attend In” a 2018-19 school, during the 2018-19 school year, plus students attending that school that live outside of the district, plus those students that could not be located in the GIS.

Middle School Option Impacts

Option	Total Grade Config Live and Attend In Students Impacted
Option A	281
Option B	441
Option 6	397

The Impact of Options A and B also includes 73 5th grade students from Meadowlane ES change from Middle School to Elementary School.

The Impact of Option 6 also includes 59 5th grade students from Meadowland ES change from Middle School to Elementary School.

MS Zone 2019-20	DRAFT Option A MS Zone	Total Grade Config Live and Attend In Students
Brogden	Brogden	562
Dillard	Dillard	365
Eastern Wayne	Eastern Wayne	326
Eastern Wayne	Greenwood	148
Grantham	Grantham	361
Grantham	Mount Olive	2
Greenwood	Greenwood	197
Mount Olive	Mount Olive	358
Norwayne	Dillard	58
Norwayne	Norwayne	809
Rosewood	Rosewood (5-8)	292
Spring Creek	Spring Creek	614

MS Zone 2019-20	DRAFT Option B MS Zone	Total Grade Config Live and Attend In Students	MS Zone 2019-20	DRAFT Option 6 MS Zone	Total Grade Config Live and Attend In Students
Brogden	Brogden	562	Brogden	Brogden	562
Dillard	Dillard	365	Dillard	Dillard	365
Eastern Wayne	Eastern Wayne	326	Eastern Wayne	Dillard	27
Eastern Wayne	Greenwood	148	Eastern Wayne	Eastern Wayne	326
Grantham	Grantham	361	Eastern Wayne	Greenwood	121
Grantham	Mount Olive	2	Grantham	Grantham	361
Greenwood	Greenwood	197	Grantham	Mount Olive	2
Mount Olive	Mount Olive	358	Greenwood	Dillard	39
Norwayne	Dillard	127	Greenwood	Greenwood	158
Norwayne	Eastern Wayne	91	Mount Olive	Mount Olive	358
Norwayne	Norwayne	649	Norwayne	Dillard	58
Rosewood	Rosewood (5-8)	292	Norwayne	Eastern Wayne	91
Spring Creek	Spring Creek	614	Norwayne	Norwayne	718
			Rosewood	Rosewood (5-8)	292
			Spring Creek	Spring Creek	614

MS to HS Feeder Pattern

2018-19 MS Zone	2018-19 HS Zone	Total 5-8th Live and Attend-In	MS Attendance
Brogden	Southern Wayne	375	67%
Brogden	Spring Creek	187	33%
Dillard	Goldsboro	501	100%
Eastern Wayne	Eastern Wayne	642	100%
Grantham	Southern Wayne	363	100%
Greenwood	Eastern Wayne	199	74%
Greenwood	Spring Creek	71	26%
Mount Olive	Southern Wayne	358	100%
Norwayne	Aycock	1145	100%
Rosewood	Rosewood	410	100%
Spring Creek	Spring Creek	614	100%

DRAFT Option A MS Zone	DRAFT Option A HS Zone	Total 5-8th Live and Attend-In	MS Attendance
Brogden	Southern Wayne	375	67%
Brogden	Spring Creek	187	33%
Dillard	Eastern Wayne	179	30%
Dillard	Goldsboro	412	70%
Eastern Wayne	Eastern Wayne	442	100%
Grantham	Southern Wayne	361	100%
Greenwood	Eastern Wayne	470	100%
Mount Olive	Southern Wayne	360	100%
Norwayne	Aycock	1055	100%
Rosewood	Rosewood	410	100%
Spring Creek	Spring Creek	614	100%

DRAFT Option B MS Zone	DRAFT Option B HS Zone	Total 5-8th Live and Attend-In	MS Attendance
Brogden	Southern Wayne	375	67%
Brogden	Spring Creek	187	33%
Dillard	Eastern Wayne	179	26%
Dillard	Goldsboro	499	74%
Eastern Wayne	Aycock	127	22%
Eastern Wayne	Eastern Wayne	442	78%
Grantham	Southern Wayne	361	100%
Greenwood	Eastern Wayne	470	100%
Mount Olive	Southern Wayne	360	100%
Norwayne	Aycock	841	100%
Rosewood	Rosewood	410	100%
Spring Creek	Spring Creek	614	100%

DRAFT Option 6 MS Zone	DRAFT Option 6 HS Zone	Total 5-8th Live and Attend-In	MS Attendance
Brogden	Southern Wayne	375	67%
Brogden	Spring Creek	187	33%
Dillard	Eastern Wayne	265	39%
Dillard	Goldsboro	412	61%
Eastern Wayne	Aycock	127	22%
Eastern Wayne	Eastern Wayne	442	78%
Grantham	Southern Wayne	361	100%
Greenwood	Eastern Wayne	384	100%
Mount Olive	Southern Wayne	360	100%
Norwayne	Aycock	928	100%
Rosewood (5-8)	Rosewood	410	100%
Spring Creek	Spring Creek	614	100%

High School Options Estimated Enrollment Statistics

High School	2018-19 Capacity	Total Enrolled	DRAFT Option A Estimated Enrollment	DRAFT Option B Estimated Enrollment	DRAFT Option 6 Estimated Enrollment
Charles B. Aycock High School	1296	1164	1087	981	1087
Eastern Wayne High School	1403	965	1243	1243	1243
Goldsboro High School	672	574	432	538	432
Rosewood High School	556	499	499	499	499
Southern Wayne High School	1219	1083	1083	1083	1083
Spring Creek High School	773	714	655	655	655
Total	5919	4999	4999	4999	4999

High School	2018-19 Capacity	Enrolled Utilization	DRAFT Option A Utilization	DRAFT Option B Utilization	DRAFT Option 6 Utilization
Charles B. Aycock High School	1296	90%	84%	76%	84%
Eastern Wayne High School	1403	69%	89%	89%	89%
Goldsboro High School	672	85%	64%	80%	64%
Rosewood High School	556	90%	90%	90%	90%
Southern Wayne High School	1219	89%	89%	89%	89%
Spring Creek High School	773	92%	85%	85%	85%
Total	5919	84%	84%	84%	84%

Student counts are based on the 10/08/2018 WCPS

The estimated enrollment is calculated by adding the total number students within each new DRAFT option zone that "Live and Attend In" for the grade configuration for that school, plus the students that "Live Out and Attend In" a 2018-19 school, during the 2018-19 school year, plus students attending that school that live outside of the district, plus those students that could not be located in the GIS.

High School Options Demographics Statistics

High School	Enrolled				
	Percent Black	Percent White	Percent Other	Percent Non-Hispanic	Percent Hispanic
Charles B. Aycock High School	21.0%	60.6%	18.4%	88.0%	12.0%
Eastern Wayne High School	52.2%	29.5%	18.2%	86.7%	13.3%
Goldsboro High School	90.1%	3.0%	7.0%	95.3%	4.7%
Rosewood High School	15.2%	64.9%	19.8%	88.2%	11.8%
Southern Wayne High School	35.5%	29.2%	35.4%	68.0%	32.0%
Spring Creek High School	16.2%	30.8%	52.9%	51.7%	48.3%
Total	36.8%	37.3%	25.8%	79.1%	20.9%

High School	Option A				
	Percent Black	Percent White	Percent Other	Percent Non-Hispanic	Percent Hispanic
Charles B. Aycock High School	20.7%	61.1%	18.2%	87.9%	12.1%
Eastern Wayne High School	58.1%	24.2%	17.7%	87.0%	13.0%
Goldsboro High School	77.3%	13.0%	9.7%	93.8%	6.3%
Rosewood High School	15.2%	64.9%	19.8%	88.2%	11.8%
Southern Wayne High School	35.5%	29.2%	35.4%	68.0%	32.0%
Spring Creek High School	15.4%	31.5%	53.1%	51.1%	48.9%
Total	36.8%	37.3%	25.8%	79.1%	20.9%

Student counts are based on the 10/08/2018 WCPS student database.

The estimated enrollment is calculated by adding the total number students within each new DRAFT option zone that “Live and Attend In” for the grade configuration for that school, plus the students that “Live Out and Attend In” a 2018-19 school, during the 2018-19 school year, plus students attending that school that live outside of the district, plus those students that could not be located in the GIS.

High School Options Demographics Statistics

High School	Option B				
	Percent Black	Percent White	Percent Other	Percent Non-Hispanic	Percent Hispanic
Charles B. Aycok High School	21.2%	59.6%	19.2%	87.2%	12.8%
Eastern Wayne High School	58.1%	24.2%	17.7%	87.0%	13.0%
Goldsboro High School	65.2%	25.1%	9.7%	75.3%	5.0%
Rosewood High School	15.2%	64.9%	19.8%	88.2%	11.8%
Southern Wayne High School	35.5%	29.2%	35.4%	68.0%	32.0%
Spring Creek High School	15.4%	31.5%	53.1%	51.1%	48.9%
Total	36.8%	37.3%	25.8%	77.1%	20.8%

High School	Option 6				
	Percent Black	Percent White	Percent Other	Percent Non-Hispanic	Percent Hispanic
Charles B. Aycok High School	20.7%	61.1%	18.2%	87.9%	12.1%
Eastern Wayne High School	58.1%	24.2%	17.7%	87.0%	13.0%
Goldsboro High School	77.3%	13.0%	9.7%	93.8%	6.3%
Rosewood High School	15.2%	64.9%	19.8%	88.2%	11.8%
Southern Wayne High School	35.5%	29.2%	35.4%	68.0%	32.0%
Spring Creek High School	15.4%	31.5%	53.1%	51.1%	48.9%
Total	36.8%	37.3%	25.8%	77.1%	20.8%

Student counts are based on the 10/08/2018 WCPS student database.

The estimated enrollment is calculated by adding the total number students within each new DRAFT option zone that “Live and Attend In” for the grade configuration for that school, plus the students that “Live Out and Attend In” a 2018-19 school, during the 2018-19 school year, plus students attending that school that live outside of the district, plus those students that could not be located in the GIS.

High School Option Impacts

Option	Total Grade Config Live and Attend In Students Impacted
Option A	355
Option B	461
Option 6	355

HS Zone 2019-20	DRAFT Option A HS Zone	Total Grade Config Live and Attend In Students
Aycock	Aycock	1051
Aycock	Goldsboro	77
Eastern Wayne	Eastern Wayne	804
Goldsboro	Eastern Wayne	219
Goldsboro	Goldsboro	336
Rosewood	Rosewood	425
Southern Wayne	Southern Wayne	1046
Spring Creek	Eastern Wayne	59
Spring Creek	Spring Creek	626

HS Zone 2019-20	DRAFT Option B HS Zone	Total Grade Config Live and Attend In Students
Aycock	Aycock	945
Aycock	Goldsboro	183
Eastern Wayne	Eastern Wayne	804
Goldsboro	Eastern Wayne	219
Goldsboro	Goldsboro	336
Rosewood	Rosewood	425
Southern Wayne	Southern Wayne	1046
Spring Creek	Eastern Wayne	59
Spring Creek	Spring Creek	626

HS Zone 2019-20	DRAFT Option 6 HS Zone	Total Grade Config Live and Attend In Students
Aycock	Aycock	1051
Aycock	Goldsboro	77
Eastern Wayne	Eastern Wayne	804
Goldsboro	Eastern Wayne	219
Goldsboro	Goldsboro	336
Rosewood	Rosewood	425
Southern Wayne	Southern Wayne	1046
Spring Creek	Eastern Wayne	59
Spring Creek	Spring Creek	626

Glossary of Terms

2018-19 Capacity – Capacity counts are calculated using 2018-19 capacity. Those capacities reflect the State of North Carolina’s implementation of a reduction of class size.

2018-19 Total Enrollment – The total number of students attending a given school as of the October 8th, 2018. Source is a database export from the Wayne County Public Schools’ student information system.

Utilization - Utilization is the enrollment divided by the 2018-19 Capacity, described as a percentage.

Live and Attend-in students – Students that live inside a school attendance boundary, and attends that school.

Live-out Attend-in students – Students that live outside of the 2018-19 attendance boundaries for the school that they attend, but attend that school.

Estimated Enrollment – The estimated enrollment is calculated by adding the total number students within each new DRAFT option zone that “Live and Attend In” for the grade configuration for that school, plus the students that “Live Out and Attend In” a 2018-19 school, during the 2018-19 school year, plus students attending that school that live outside of the district, plus those students that could not be located in the GIS.

Option Impact – The number of live-in students that change attendance boundaries from the 2018-19 attendance boundaries given each option and Grade Configuration. In other words, an estimate of the total number of students that could be impacted per any of the Options.

Feeder Pattern – The number of students living within the attendance boundary of both a lower grade cohort (ex. Elementary schools) and a higher grade cohort (i.e. Middle School). This is given as both the number of live and attend-in students, and described as a percentage.

Wayne County Public Schools, NC 2018-19 Elementary School Zones



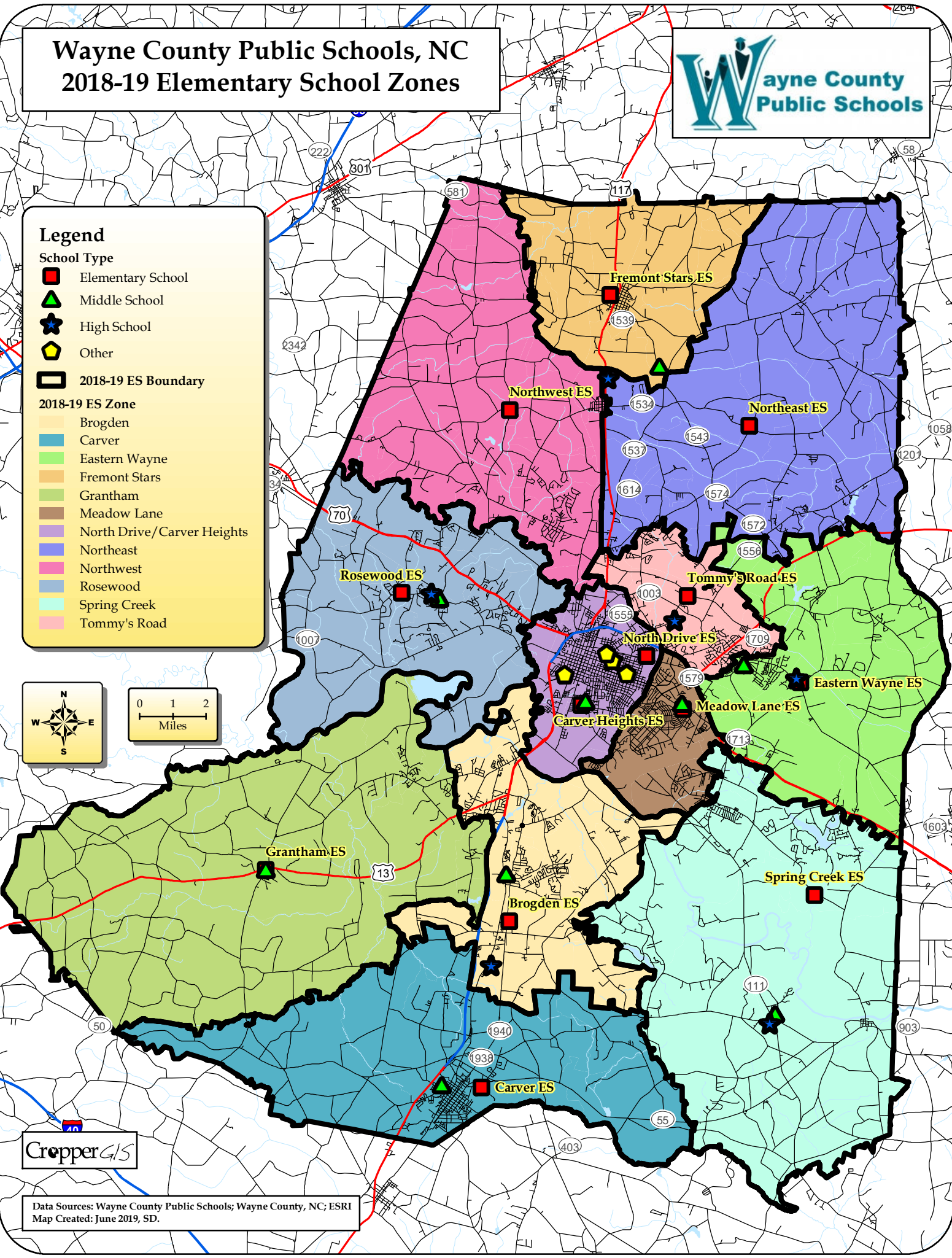
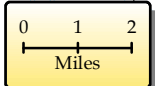
Legend

School Type

- Elementary School
- ▲ Middle School
- ★ High School
- ◆ Other
- 2018-19 ES Boundary

2018-19 ES Zone

- Brogden
- Carver
- Eastern Wayne
- Fremont Stars
- Grantham
- Meadow Lane
- North Drive/Carver Heights
- Northeast
- Northwest
- Rosewood
- Spring Creek
- Tommy's Road



Cropper GIS

Data Sources: Wayne County Public Schools; Wayne County, NC; ESRI
Map Created: June 2019, SD.

Wayne County Public Schools, NC Elementary School Zones DRAFT Option A



Legend

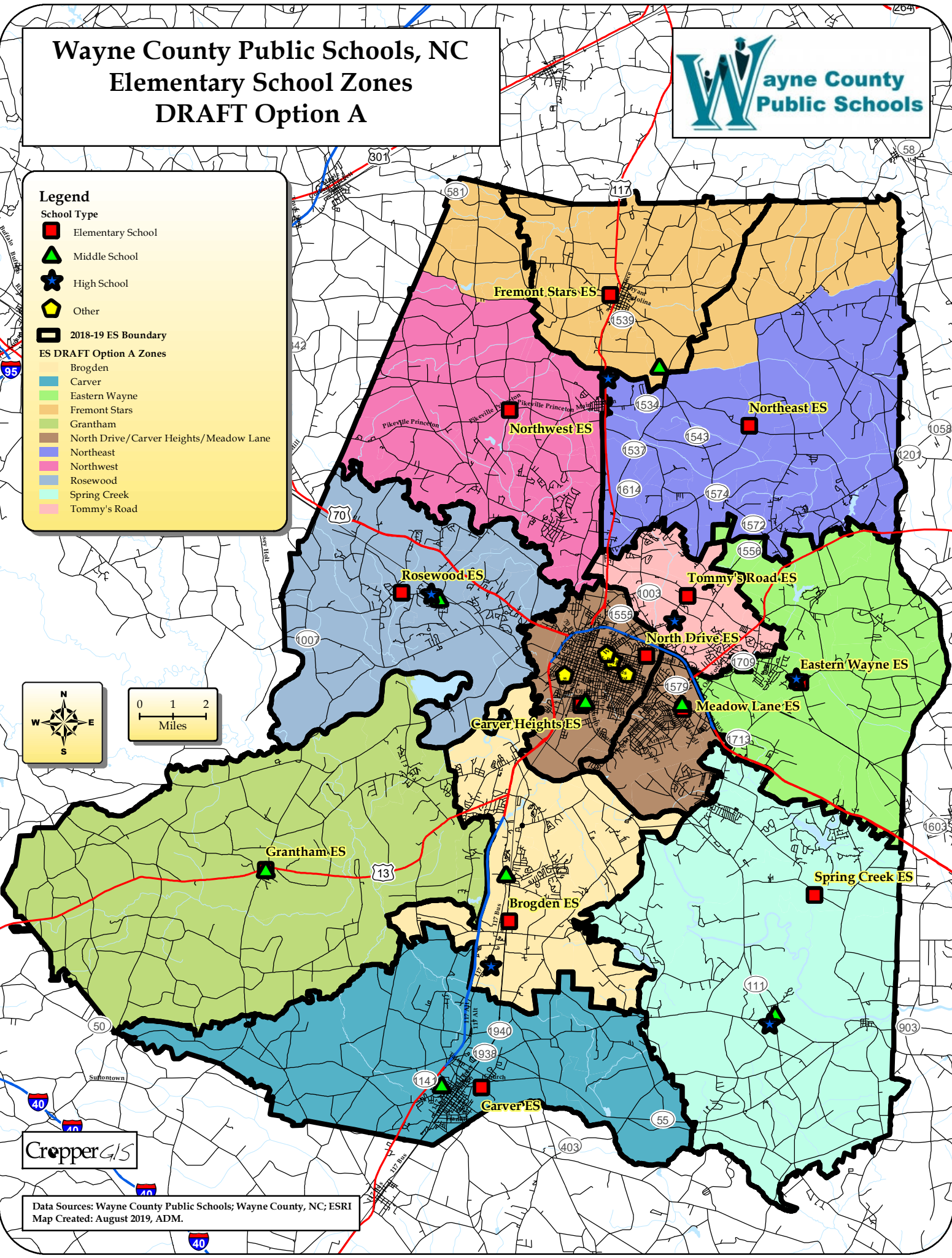
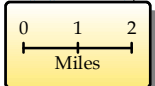
School Type

- Elementary School
- ▲ Middle School
- ★ High School
- ◆ Other

2018-19 ES Boundary

ES DRAFT Option A Zones

- Brogden
- Carver
- Eastern Wayne
- Fremont Stars
- Grantham
- North Drive/Carver Heights/Meadow Lane
- Northeast
- Northwest
- Rosewood
- Spring Creek
- Tommy's Road



Cropper GIS

Data Sources: Wayne County Public Schools; Wayne County, NC; ESRI
Map Created: August 2019, ADM.

Wayne County Public Schools, NC Elementary School Zones DRAFT Option B



Legend

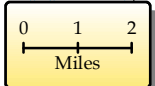
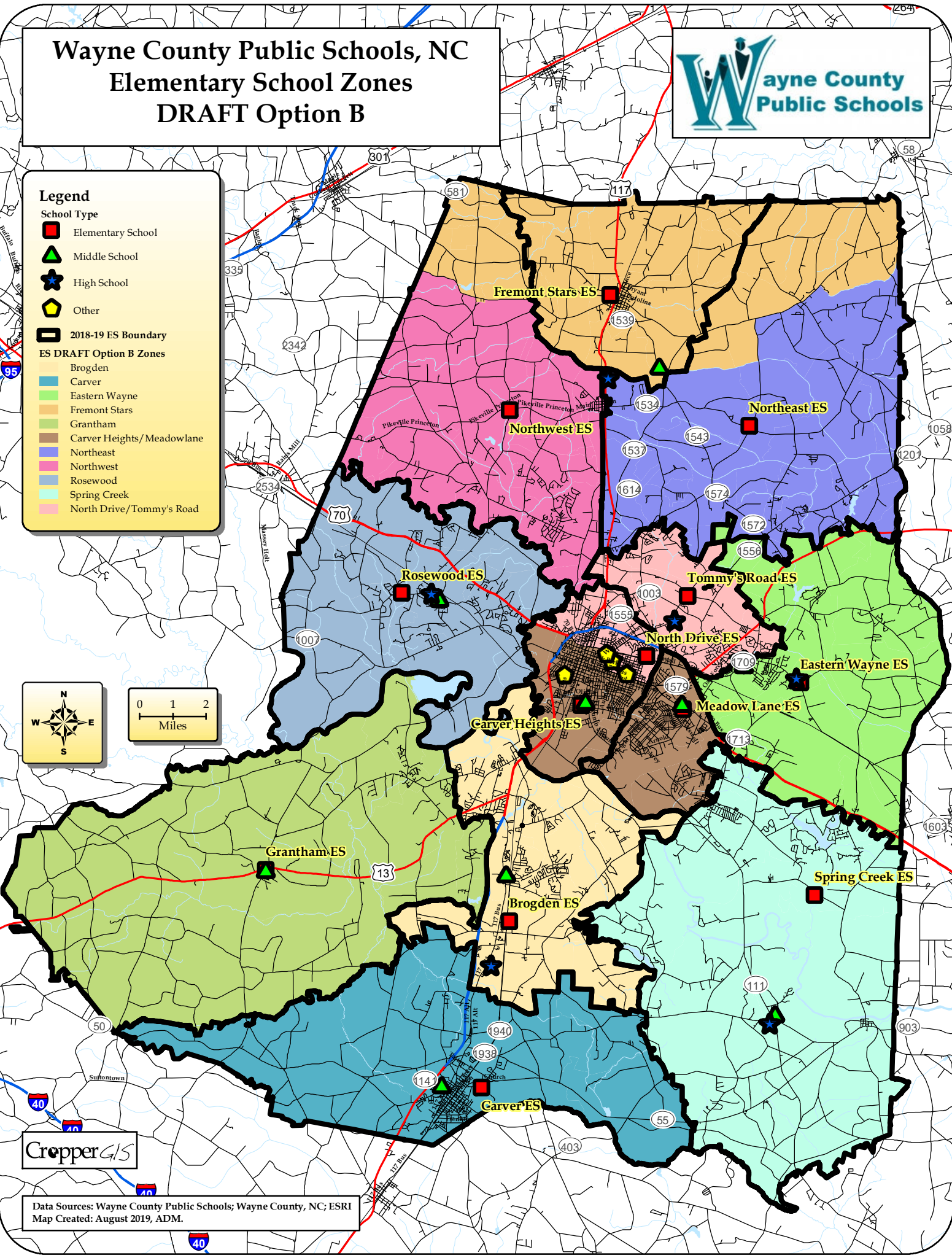
School Type

- Elementary School
- ▲ Middle School
- ★ High School
- ◆ Other

2018-19 ES Boundary

ES DRAFT Option B Zones

- Brogden
- Carver
- Eastern Wayne
- Fremont Stars
- Grantham
- Carver Heights/ Meadowlane
- Northeast
- Northwest
- Rosewood
- Spring Creek
- North Drive/Tommy's Road



Cropper GIS

Data Sources: Wayne County Public Schools; Wayne County, NC; ESRI
Map Created: August 2019, ADM.

Wayne County Public Schools, NC Elementary School Zones DRAFT Option 6



Legend

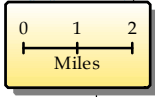
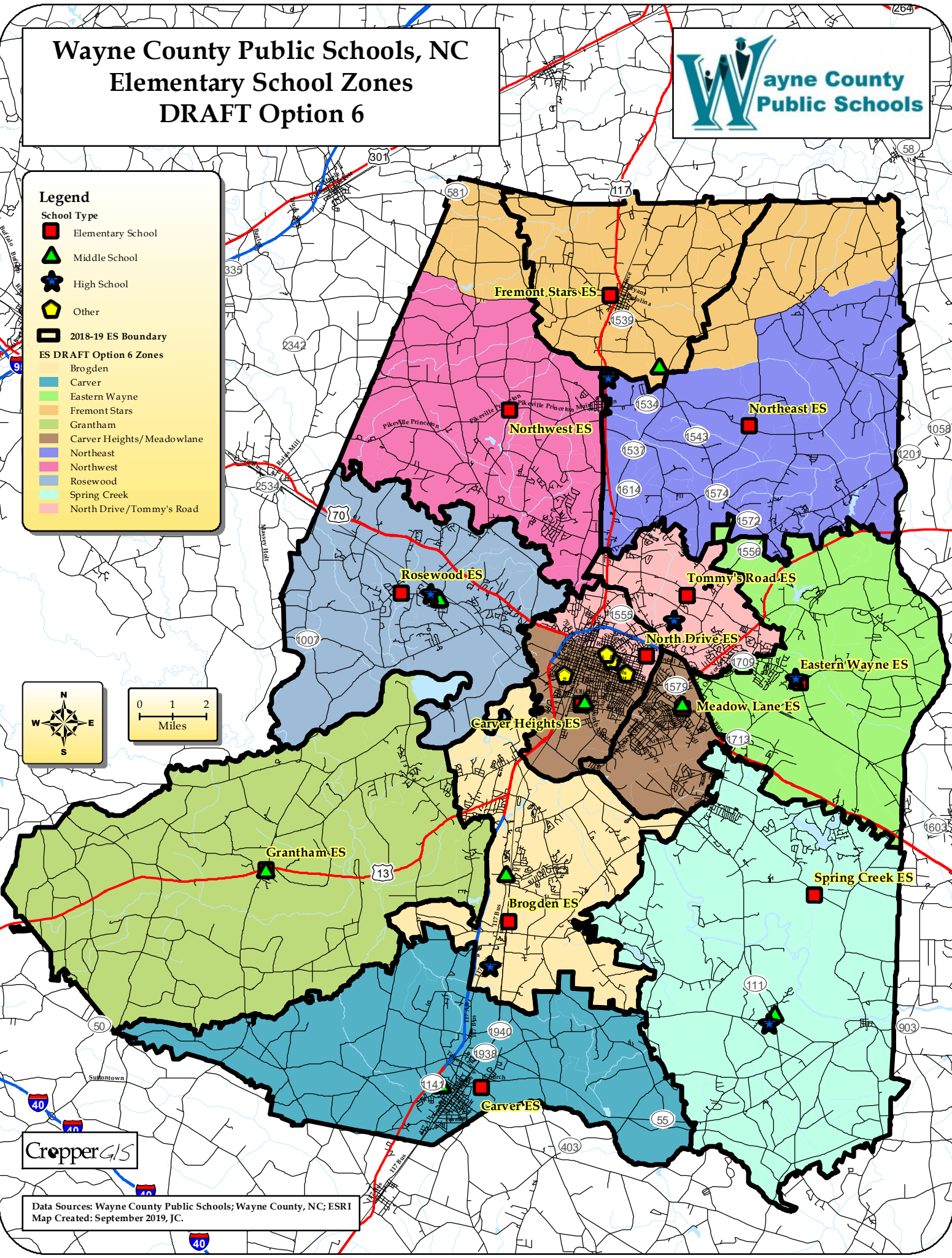
School Type

- Elementary School
- ▲ Middle School
- ★ High School
- ◊ Other

2018-19 ES Boundary

ES DRAFT Option 6 Zones

- Brogden
- Carver
- Eastern Wayne
- Fremont Stars
- Grantham
- Carver Heights/ Meadowlane
- Northeast
- Northwest
- Rosewood
- Spring Creek
- North Drive/Tommy's Road



Cropper GIS

Data Sources: Wayne County Public Schools; Wayne County, NC; ESRI
Map Created: September 2019, JC.

Wayne County Public Schools, NC 2018-19 Middle School Zones



Legend

School Type

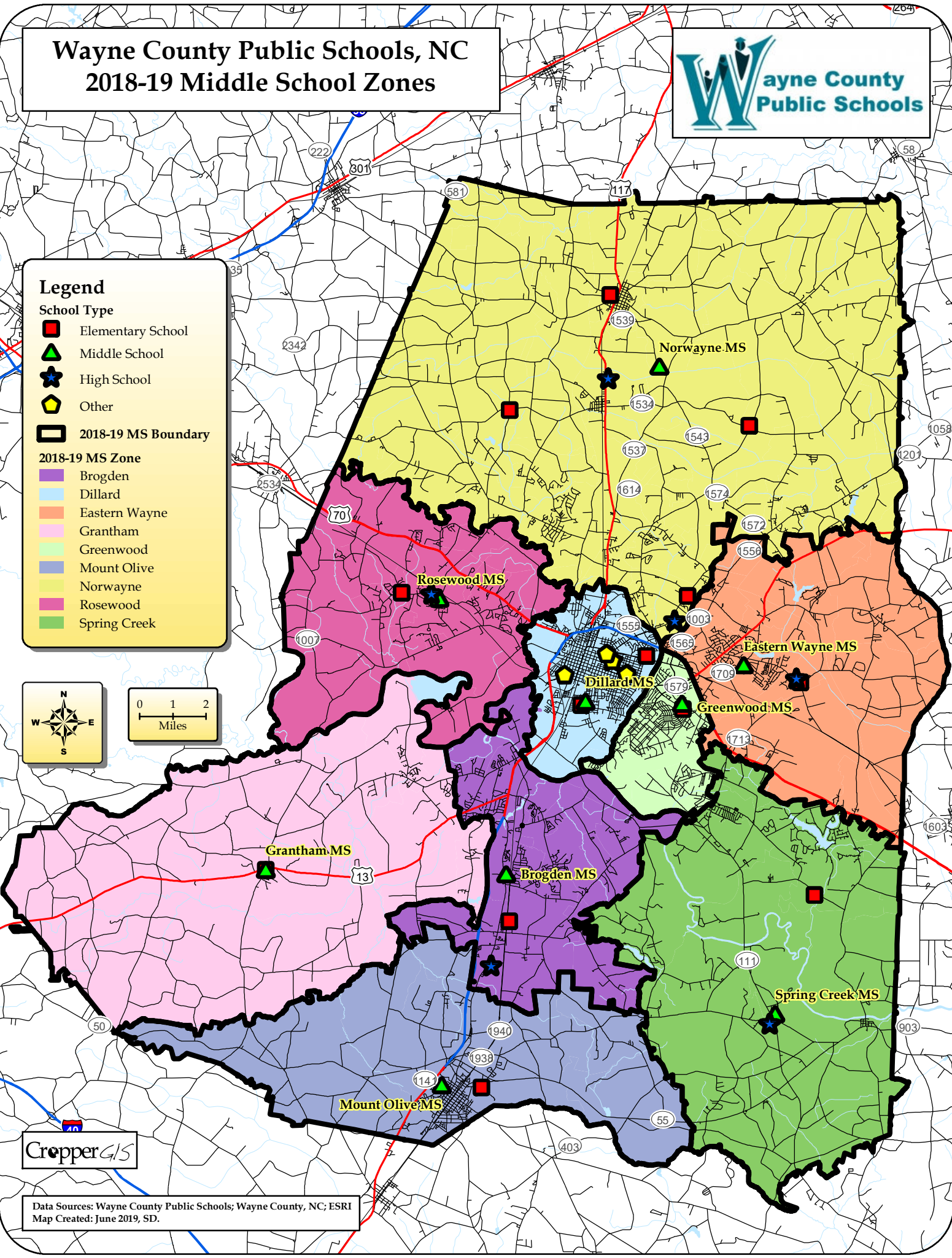
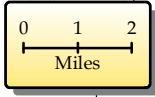
- Elementary School
- ▲ Middle School
- ★ High School
- ◆ Other

2018-19 MS Zone

- Brogden
- Dillard
- Eastern Wayne
- Grantham
- Greenwood
- Mount Olive
- Norwayne
- Rosewood
- Spring Creek

2018-19 MS Boundary

- Boundary



Cropper GIS

Data Sources: Wayne County Public Schools; Wayne County, NC; ESRI
Map Created: June 2019, SD.

Wayne County Public Schools, NC

Middle School Zones

DRAFT Option A



Legend

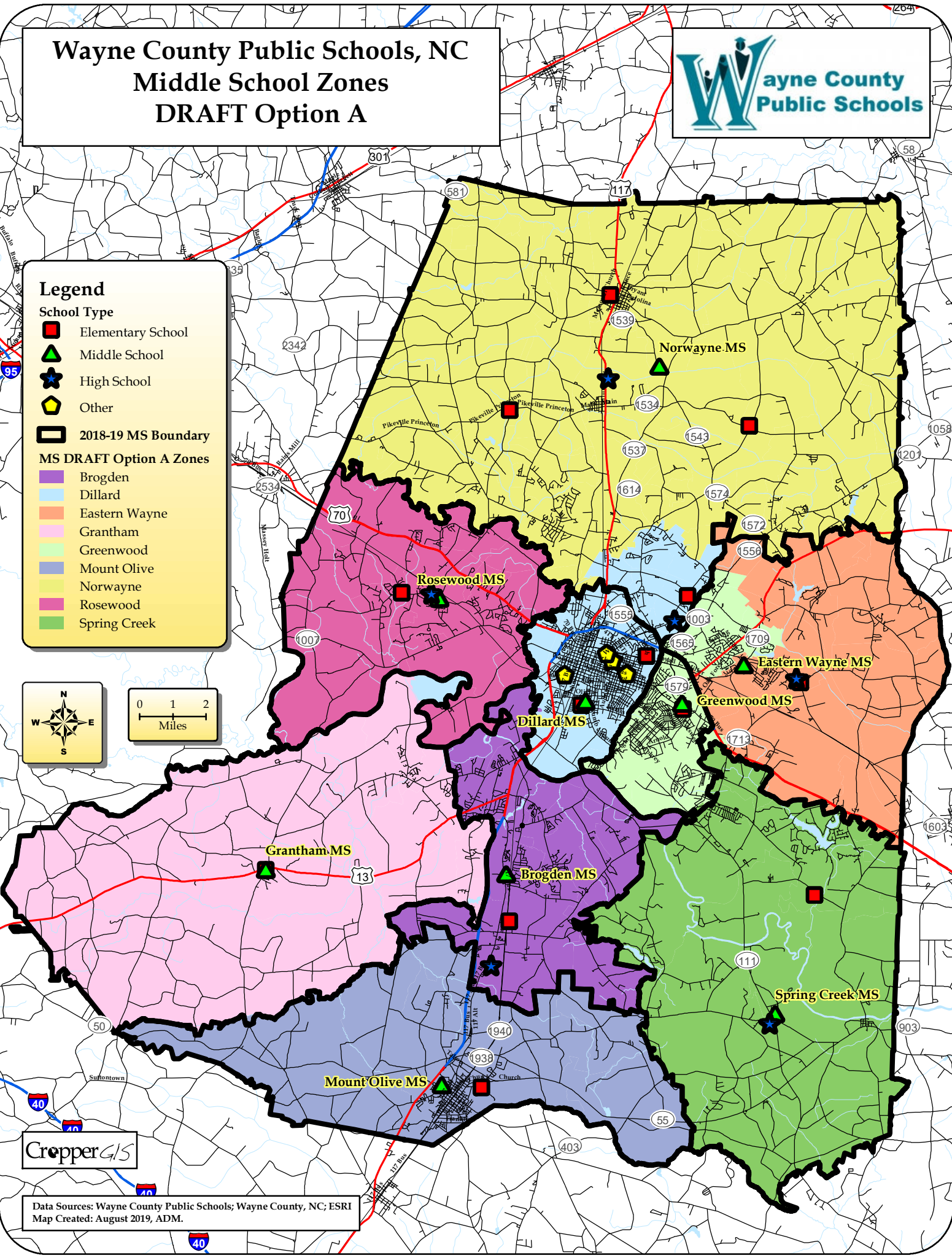
School Type

- Elementary School
- ▲ Middle School
- ★ High School
- ◆ Other

MS DRAFT Option A Zones

- Brogden
- Dillard
- Eastern Wayne
- Grantham
- Greenwood
- Mount Olive
- Norwayne
- Rosewood
- Spring Creek

2018-19 MS Boundary



Cropper GIS

Data Sources: Wayne County Public Schools; Wayne County, NC; ESRI
 Map Created: August 2019, ADM.

Wayne County Public Schools, NC

Middle School Zones

DRAFT Option B



Legend

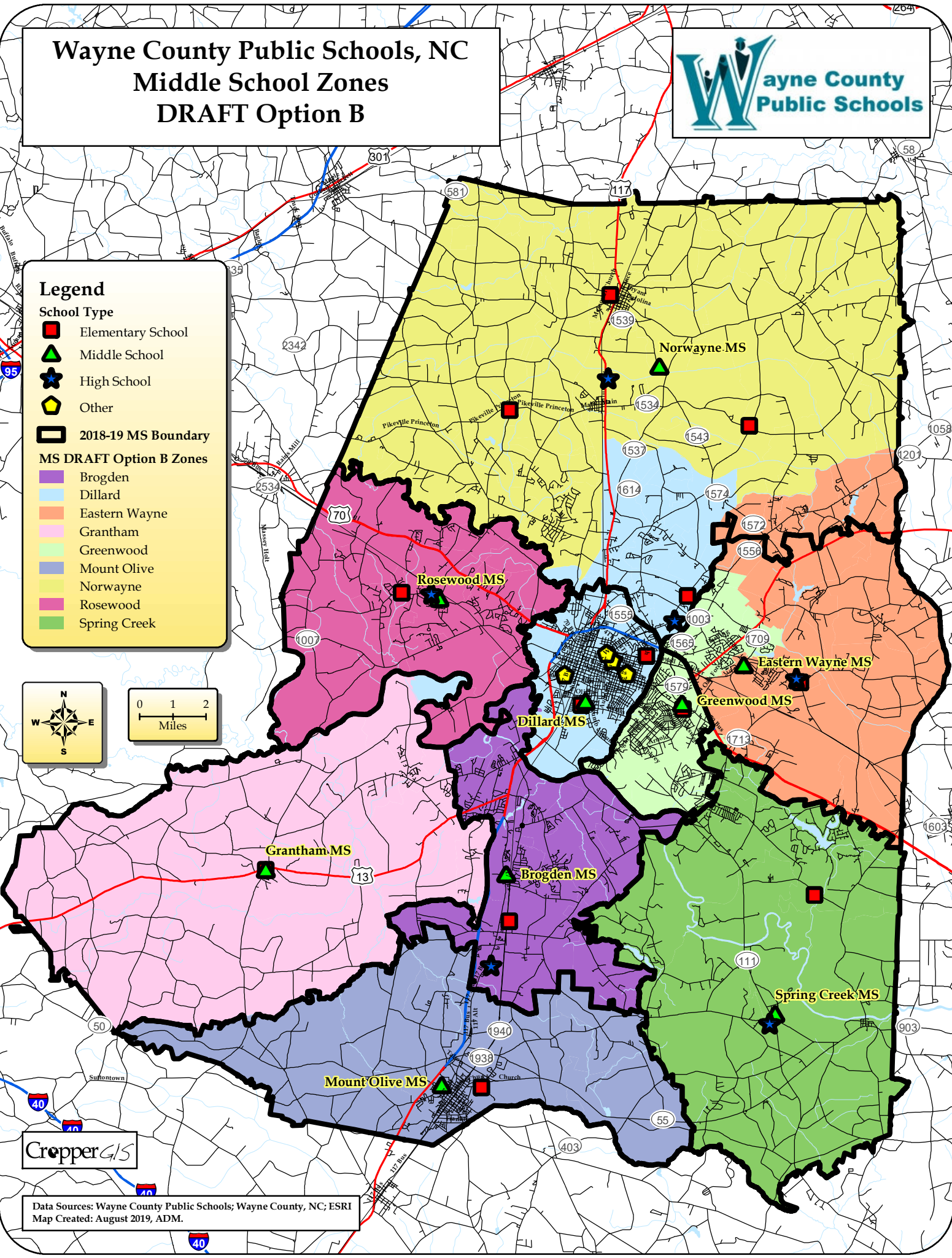
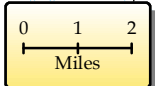
School Type

- Elementary School
- ▲ Middle School
- ★ High School
- ◆ Other

MS DRAFT Option B Zones

- Brogden
- Dillard
- Eastern Wayne
- Grantham
- Greenwood
- Mount Olive
- Norwayne
- Rosewood
- Spring Creek

2018-19 MS Boundary



Cropper GIS

Data Sources: Wayne County Public Schools; Wayne County, NC; ESRI
 Map Created: August 2019, ADM.

Wayne County Public Schools, NC

Middle School Zones

DRAFT Option 6



Legend

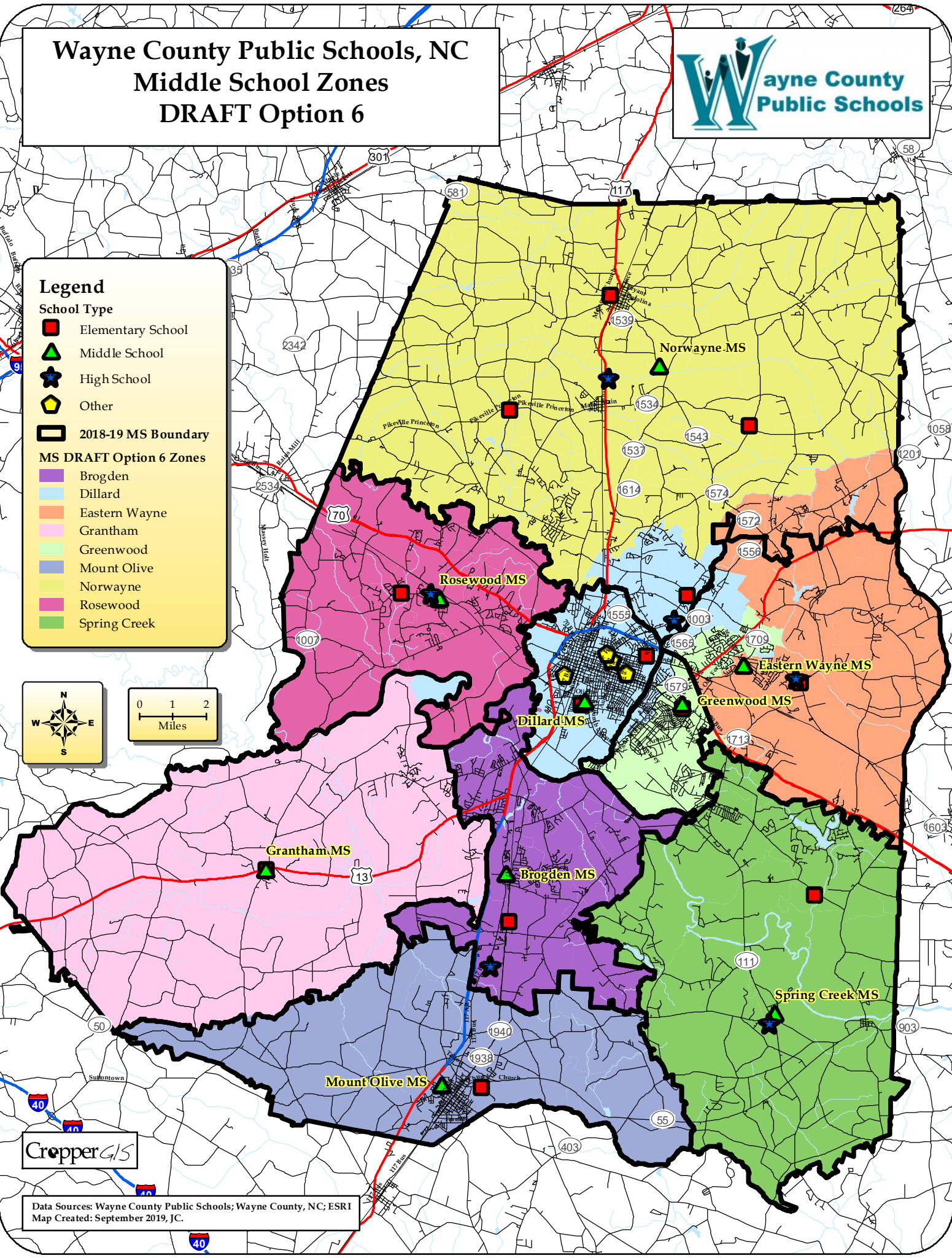
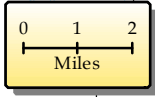
School Type

- Elementary School
- ▲ Middle School
- ★ High School
- ◆ Other

2018-19 MS Boundary

MS DRAFT Option 6 Zones

- Brogden
- Dillard
- Eastern Wayne
- Grantham
- Greenwood
- Mount Olive
- Norwayne
- Rosewood
- Spring Creek



Cropper GIS

Data Sources: Wayne County Public Schools; Wayne County, NC; ESRI
 Map Created: September 2019, JC.

Wayne County Public Schools, NC 2018-19 High School Zones



Legend

School Type

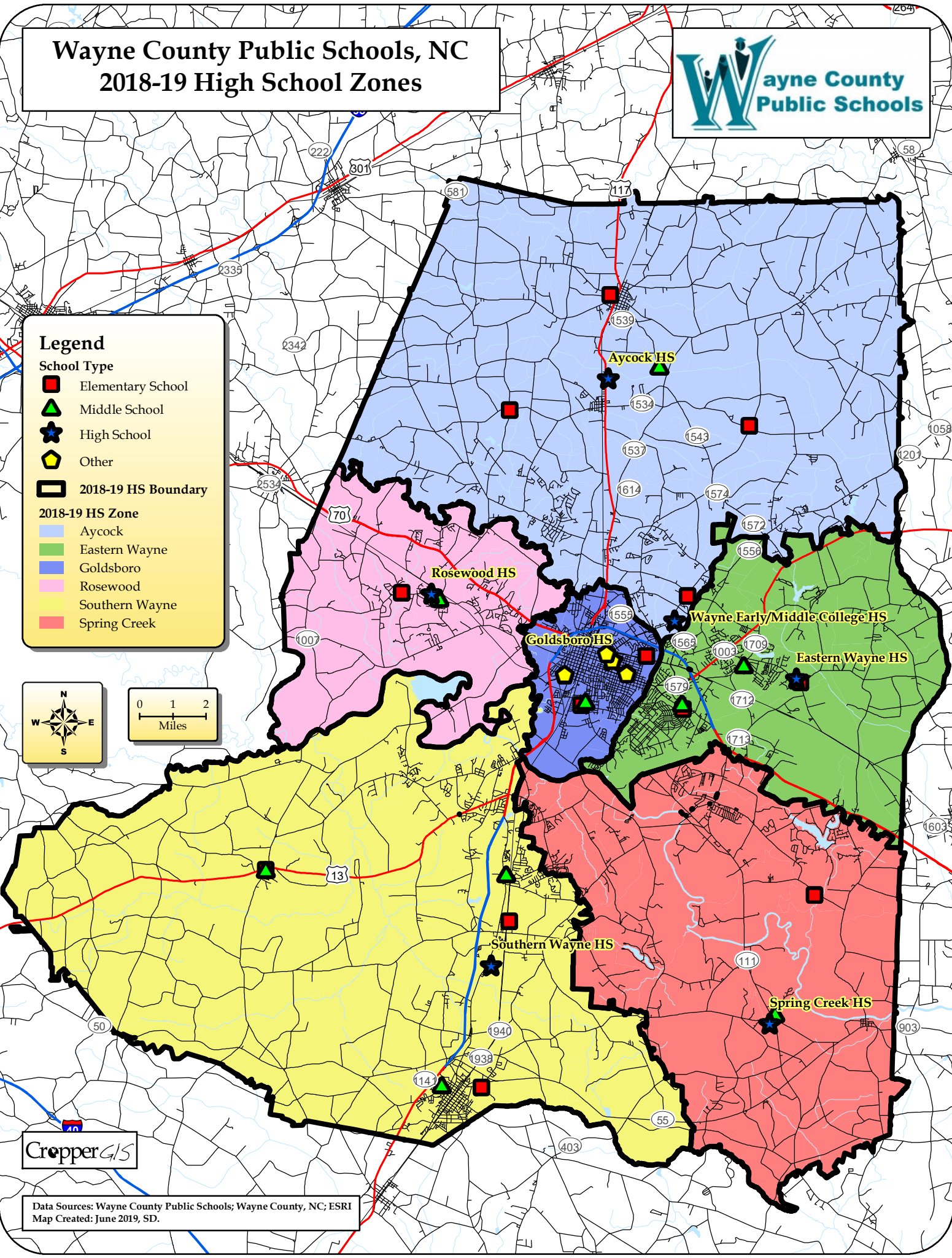
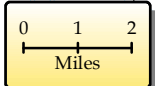
- Elementary School
- ▲ Middle School
- ★ High School
- ◆ Other

2018-19 HS Zone

- Aycock
- Eastern Wayne
- Goldsboro
- Rosewood
- Southern Wayne
- Spring Creek

2018-19 HS Boundary

- 2018-19 HS Boundary



Cropper GIS

Data Sources: Wayne County Public Schools; Wayne County, NC; ESRI
Map Created: June 2019, SD.

Wayne County Public Schools, NC High School Zones DRAFT Option A



Legend

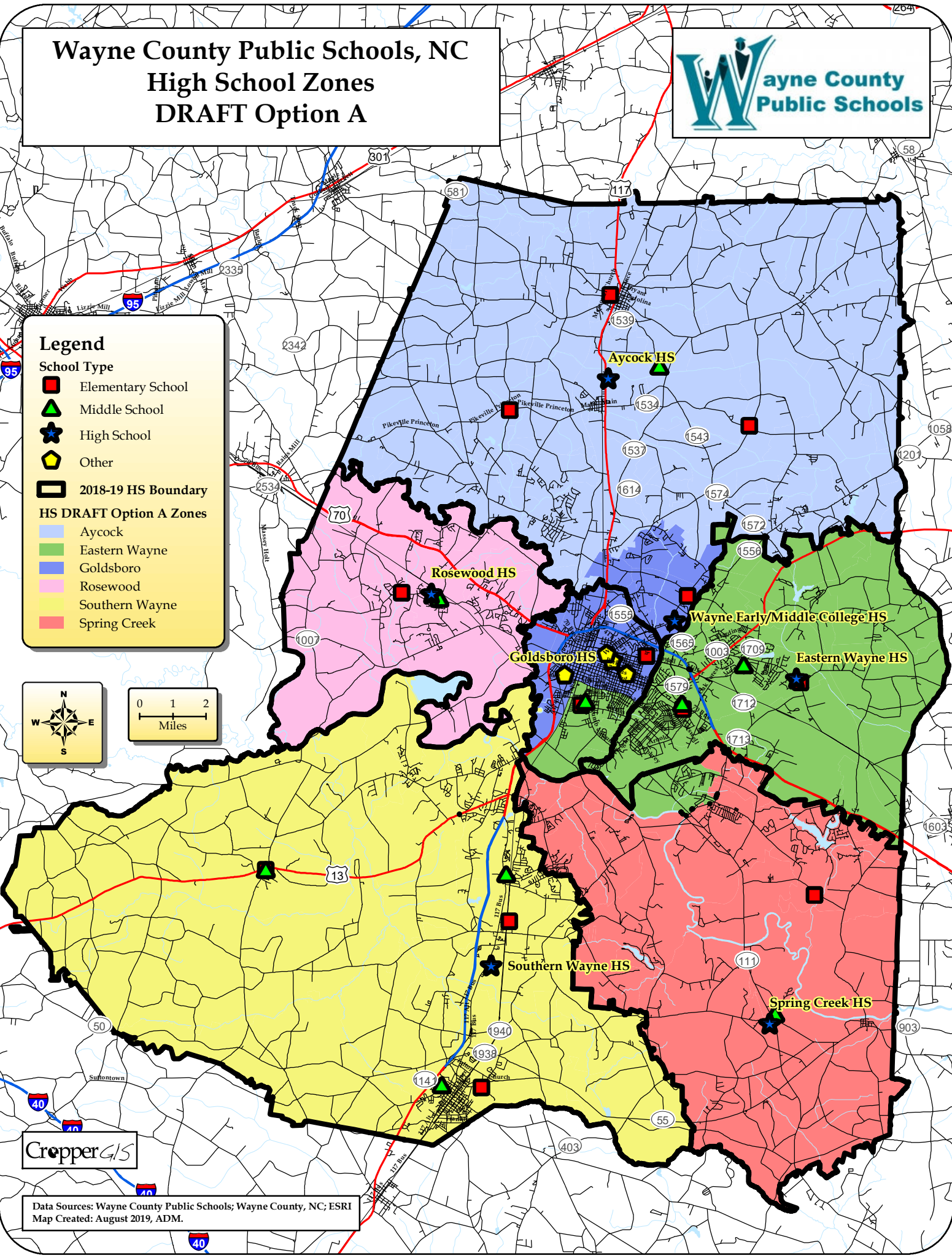
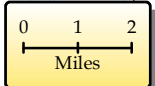
School Type

- Elementary School
- ▲ Middle School
- ★ High School
- ◆ Other

2018-19 HS Boundary

HS DRAFT Option A Zones

- Aycock
- Eastern Wayne
- Goldsboro
- Rosewood
- Southern Wayne
- Spring Creek



Cropper GIS

Data Sources: Wayne County Public Schools; Wayne County, NC; ESRI
Map Created: August 2019, ADM.

Wayne County Public Schools, NC High School Zones DRAFT Option B



Legend

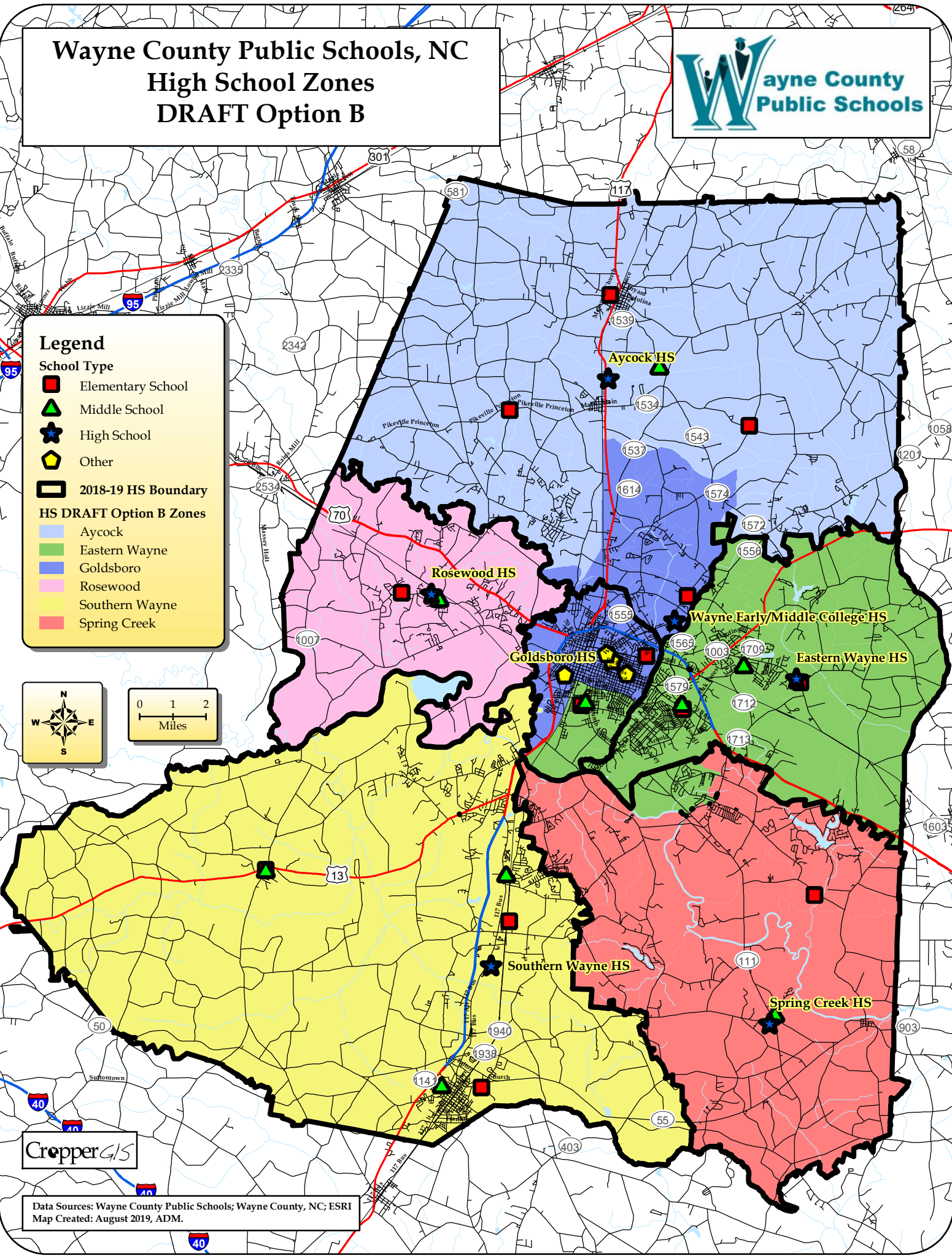
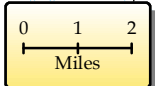
School Type

- Elementary School
- ▲ Middle School
- ★ High School
- ◆ Other

2018-19 HS Boundary

HS DRAFT Option B Zones

- Aycock
- Eastern Wayne
- Goldsboro
- Rosewood
- Southern Wayne
- Spring Creek



Cropper GIS

Data Sources: Wayne County Public Schools; Wayne County, NC; ESRI
Map Created: August 2019, ADM.

Wayne County Public Schools, NC High School Zones DRAFT Option 6



Legend

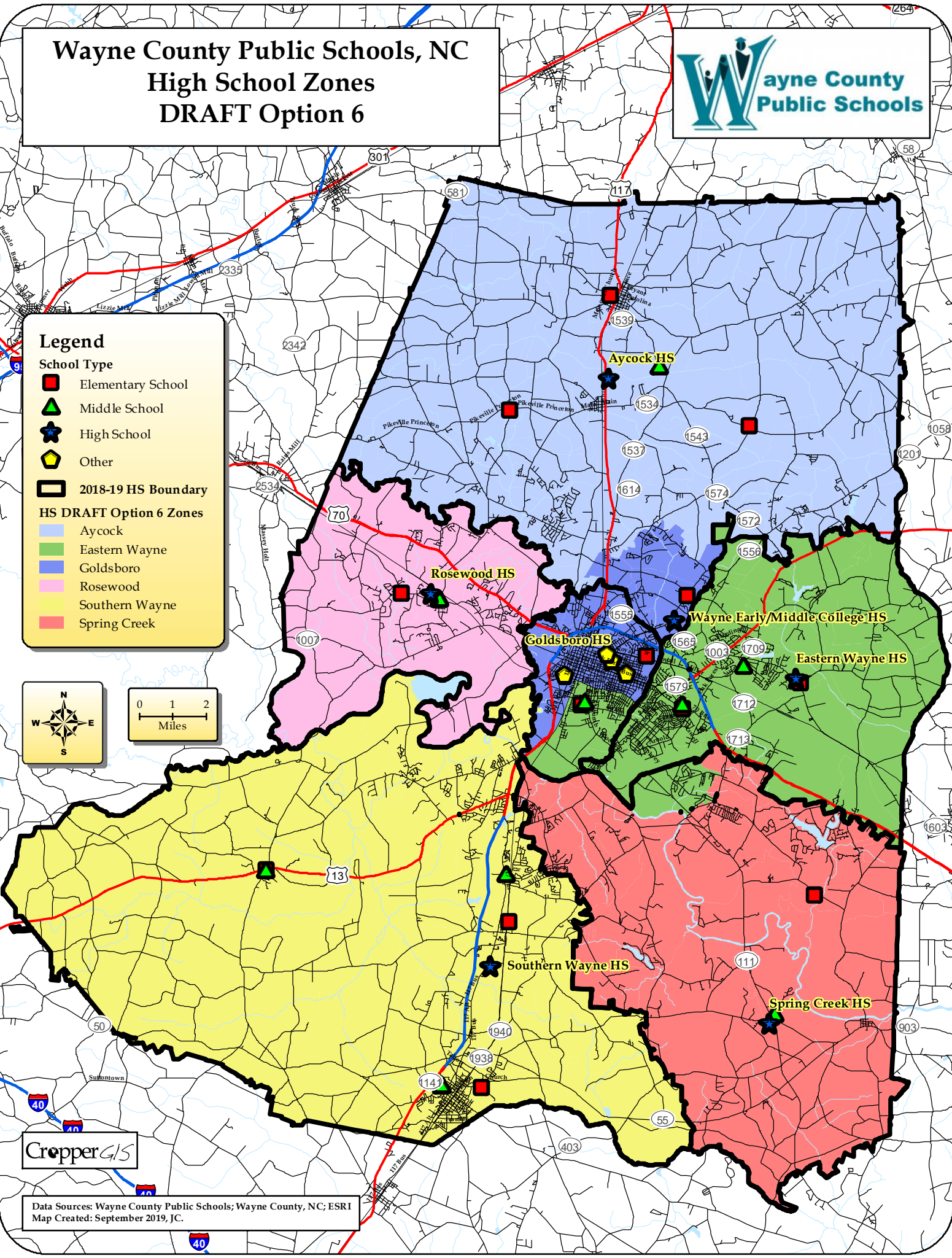
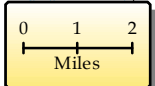
School Type

- Elementary School
- ▲ Middle School
- ★ High School
- ◆ Other

2018-19 HS Boundary

HS DRAFT Option 6 Zones

- Aycock
- Eastern Wayne
- Goldsboro
- Rosewood
- Southern Wayne
- Spring Creek



Cropper GIS

Data Sources: Wayne County Public Schools; Wayne County, NC; ESRI
Map Created: September 2019, JC.