



2024-25 School Boundary Study

Board of Education Recommendation
January 10, 2025

*Presented by: Wicomico County Public
Schools and Cropper GIS Consulting*



Cropper GIS

Cropper GIS Consulting, LLC

- K-12 school planning is our business and our passion. Our specialty is facilitating boundary processes.
- Cropper GIS works with K-12 school districts to:
 - Develop boundary plans
 - Facilitate community engagement
 - Perform demographic studies
 - Prepare long-range facility master plans
 - Conduct housing and pupil yield-factor studies

James Cooper and Matthew Cropper, Cropper GIS

- 20+ years experience providing GIS mapping and analysis services to school districts and other clients
- Facilitated boundary change study projects across the U.S.
- Published numerous times on topics related to K-12 facility and boundary change processes

The Company

Recent Projects:

- Frederick County Schools, MD
- Baltimore County Public Schools, MD
- Charlotte-Mecklenburg Schools, NC
- Groveport Madison Schools, OH
- Westerville City Schools, OH
- Dublin City Schools, OH
- Huber Heights City Schools, OH
- Akron Public Schools, OH
- MSD Washington Township, IN
- Charleston County Schools, SC
- Covington Independent Schools, KY



Project Objectives

In accordance with School Attendance Areas and Redistricting Policy (SFS-GEN-PL-032), the Wicomico County Board of Education (WCBOE) is vested with the authority to delineate the geographical attendance area for each public school. Fluctuations in enrollment and shifts in the educational landscape may necessitate the modification of attendance areas. Notably, due to instances of overcrowding and underutilization in numerous elementary schools within the district, the Wicomico County Public School (WCPS) System initiated a comprehensive school boundary study.

The WCPS boundary study is tasked with meeting the following key objectives:

- To balance utilization/relieve overcrowding among the elementary schools within the study area (Delmar Elementary was **not** included in this study).
- To make best efforts to ensure that Fall 2025 boundary changes align with long-term facilities and Elementary-to-Middle-to-High School feeder patterns.

Boundary Study Factors

- a) Educational welfare of students
- b) Frequency of boundary changes, with every attempt being made to limit individual student boundary changes to not more than once every five years
- c) Proximity to schools, in order to maximize walkers and minimize distance or time of bus runs
- d) Student demographics, to maintain or increase the diversity among schools to reflect the diversity of the region and school system
- e) Established feeder patterns
- f) Impact on neighborhoods and communities
- g) Impact on specialized school programs or a change to school capacity
- h) Instructional and operational capacity of involved schools
- i) Capacity trends
- j) Capital plans
- k) Geographic features

Stakeholders

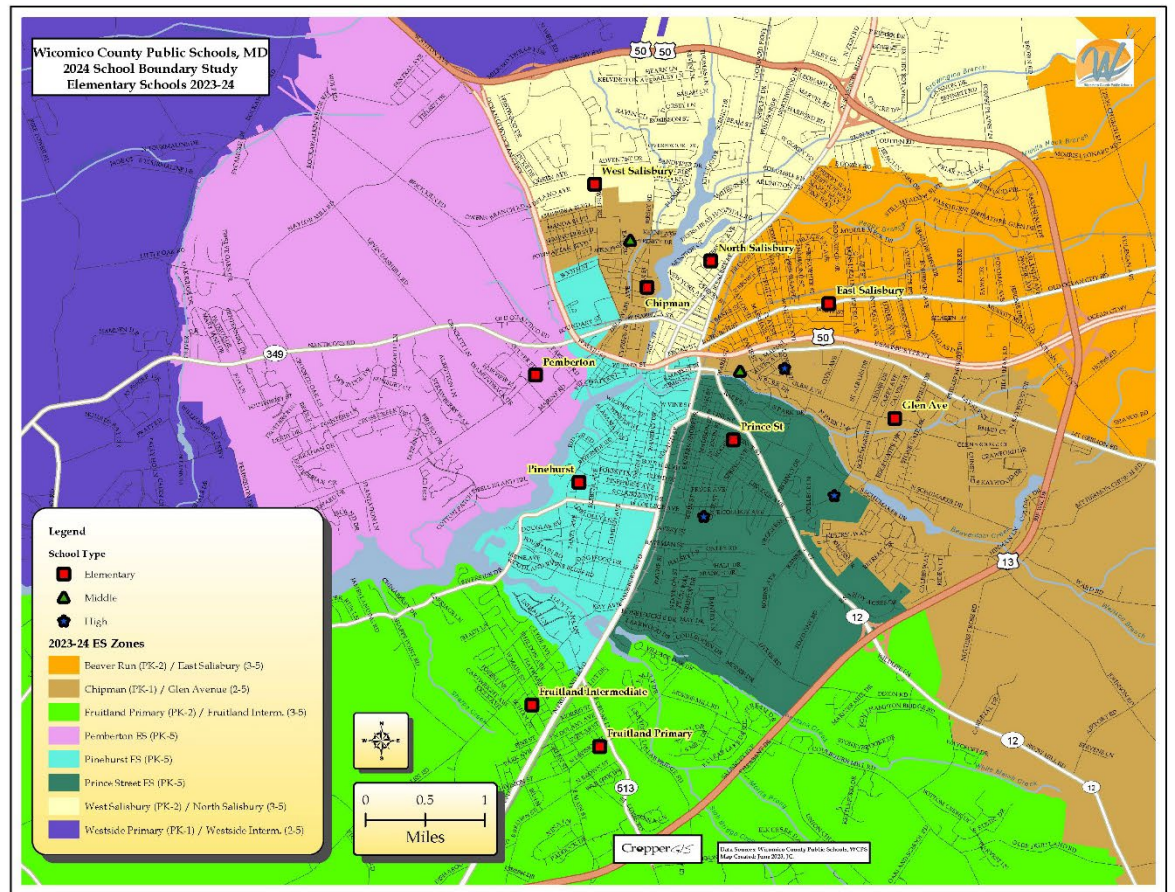
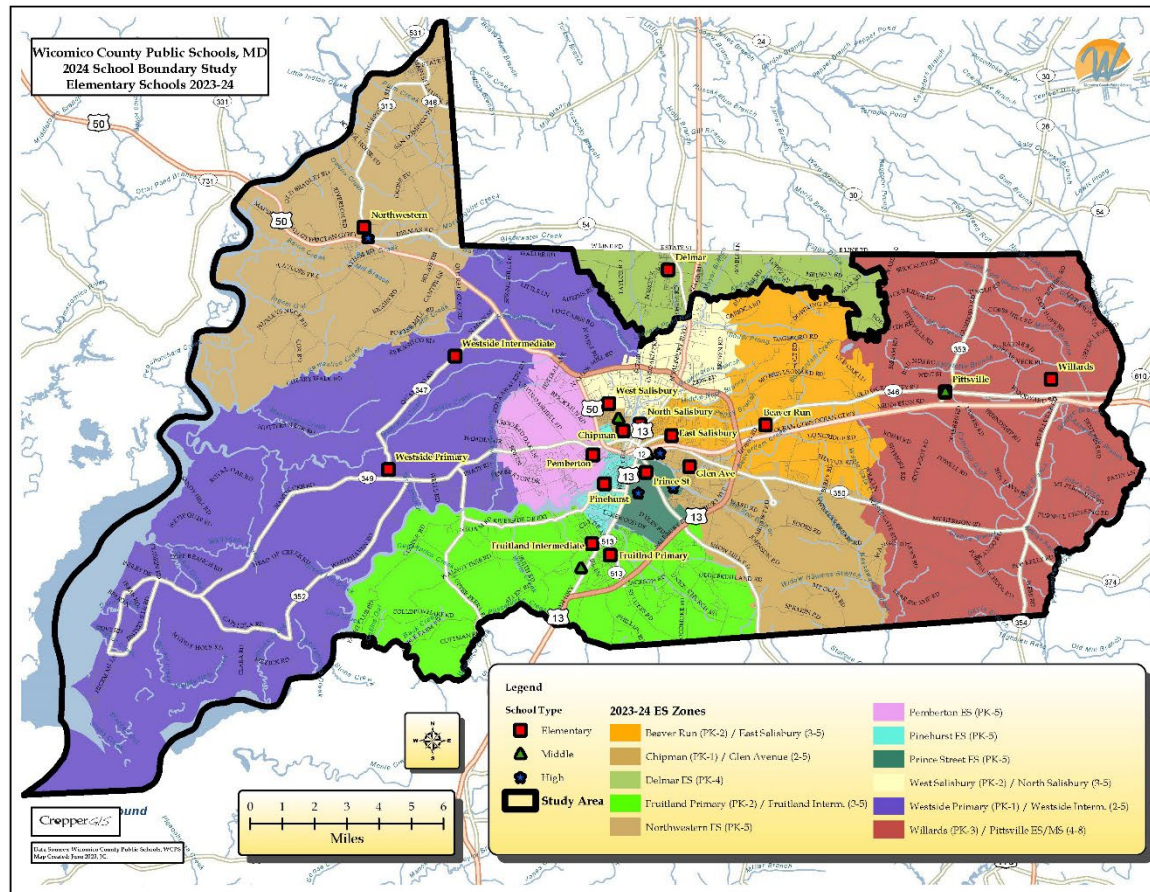
Outline of Stakeholder Responsibilities	
Consultant	<ul style="list-style-type: none"> • Schedule and facilitate School Boundary Planning Team meetings. • Communicate updates with planning team, including updated handout and meeting schedule logistics. • Conduct public meetings to solicit feedback related to draft options that are under consideration. • Support the district in providing materials such as presentations, handouts, and online interactive maps for the public's consumption. • Coordinate and summarize online feedback received from general public and school boundary planning team.
School Boundary Planning Team	<ul style="list-style-type: none"> • Consists of key WCPS district administrators including central office, senior leadership, department staff personnel, planning, and Wicomico County community members. • Group will work to review draft options that are being developed in preparation to share with the Board of Education and public. • Review input provided from the consultant and general public regarding draft options and continue to modify maps with a focus on the best solution for all students as a whole. • Share a boundary plan with the Board of Education.
General Public	<ul style="list-style-type: none"> • Informed through website. • Invited to submit comments and input throughout the entire process. • Invited to participate in public information sessions and to provide input via surveys and online general feedback form.
Board of Education	<ul style="list-style-type: none"> • Charge school boundary planning team with its responsibilities. • Identify questions the SBPT is expected to answer. • Advise staff and the process regarding policy-related considerations and other board-level decisions. • Vote on a school boundary plan.

Timeline

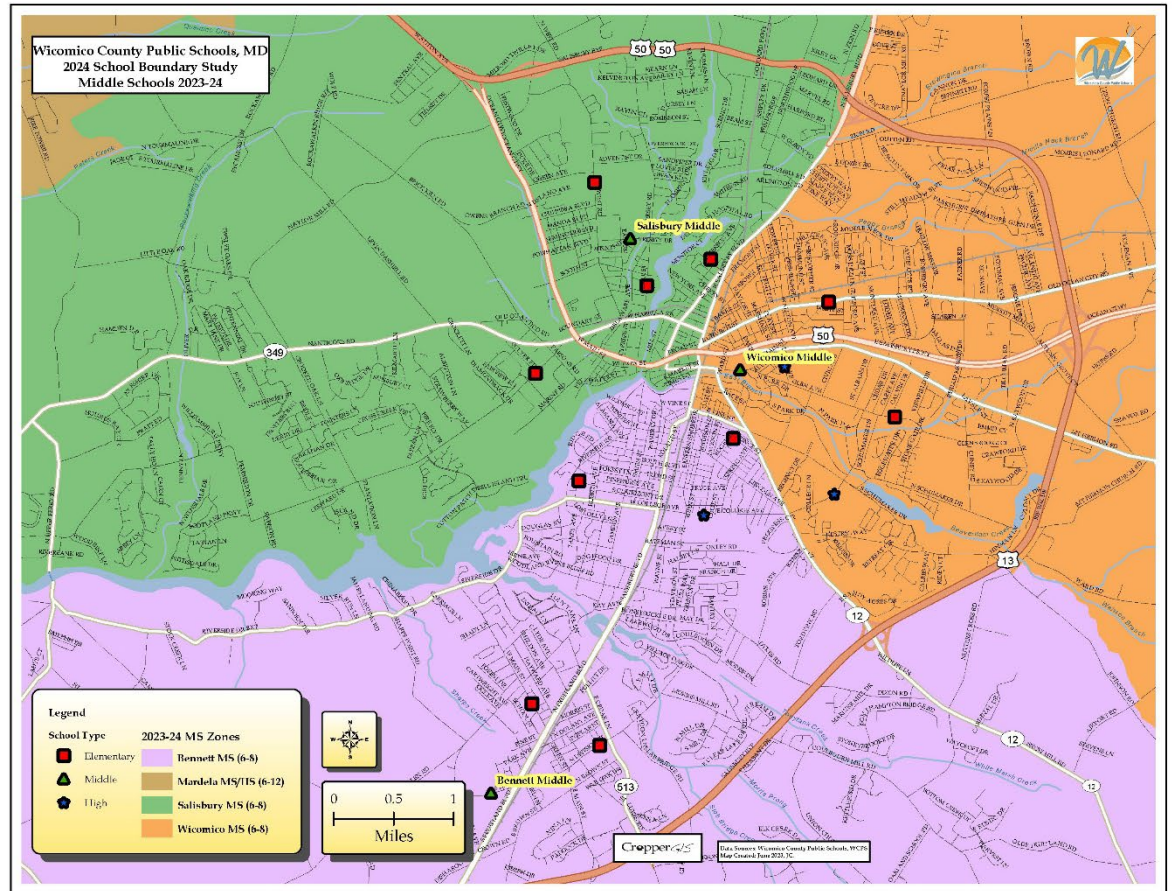
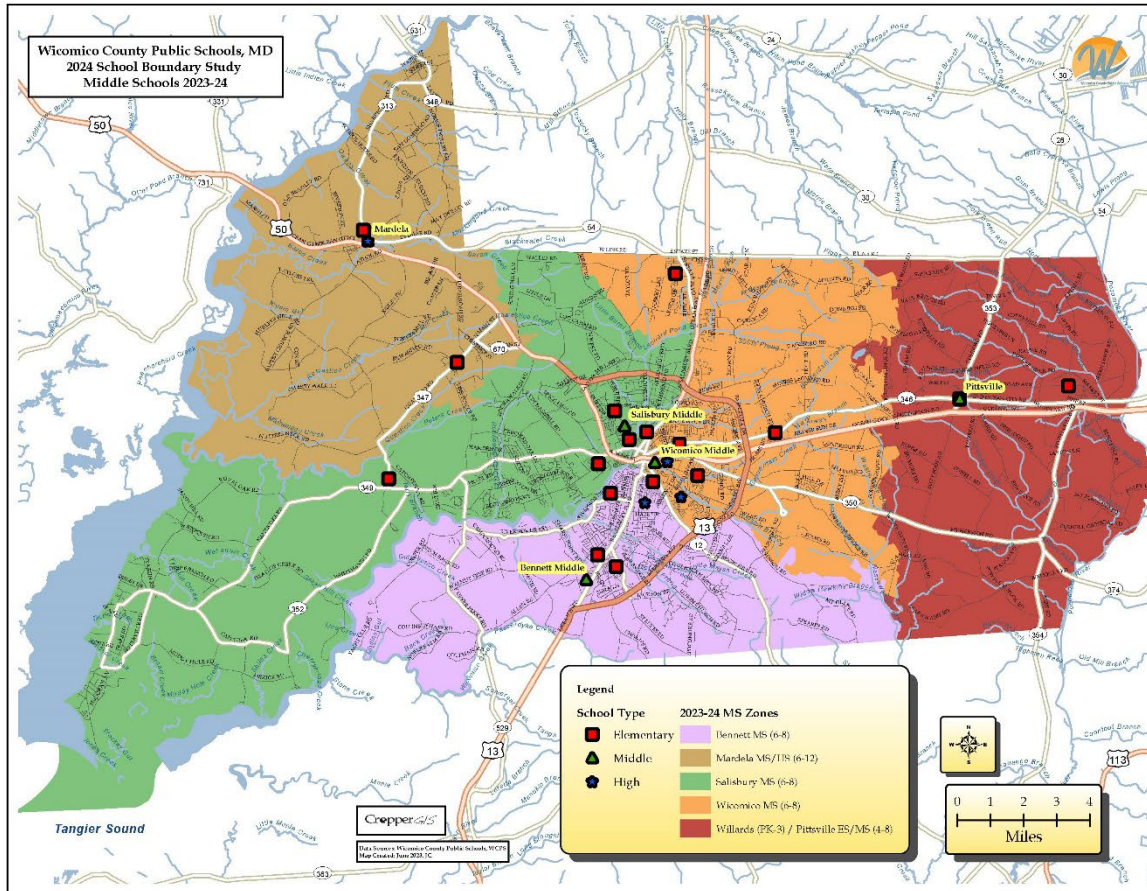
Timeline for School Boundary Study

	June '24	July '24	Aug. '24	Sept. '24	Oct. '24	Nov. '24	Dec. '24	Jan. '25	Feb. '25
<i>Presentation of Process with Board of Education</i>	6/25								
<i>Board of Education Approval of School Boundary Study Process</i>		7/9							
<i>Data Collection</i>	PHASE 1								
<i>Data Analysis / Assimilation</i>			PHASE 2						
<i>Background Report / Baseline Options Development</i>			PHASE 3						
<i>School Boundary Planning Team Work</i>			PHASE 4						
Introduction to upcoming process (YouTube Recording)			8/27						
Public Information Session #1 : Present Project Process, Criteria, Timeline, and School Boundary Study Objectives to Community. On-site meetings at 4pm and 6pm. 2 different locations.				9/19					
Public Information Session #2: Present DRAFT School Boundary Plans to General Public for Comment/Feedback. On-site meetings at 4pm and 6pm to review options and q/a at end of session. 2 different locations.						11/21			
Board of Education									
<i>Work session to Present Final School Boundary Plan Recommendation</i>								1/10	
<i>Public Hearing</i>								1/14	
<i>Work session on Potential Modified School Boundary Plan (if needed)</i>								1/28	
<i>Vote on School Boundary Plan</i>									2/11

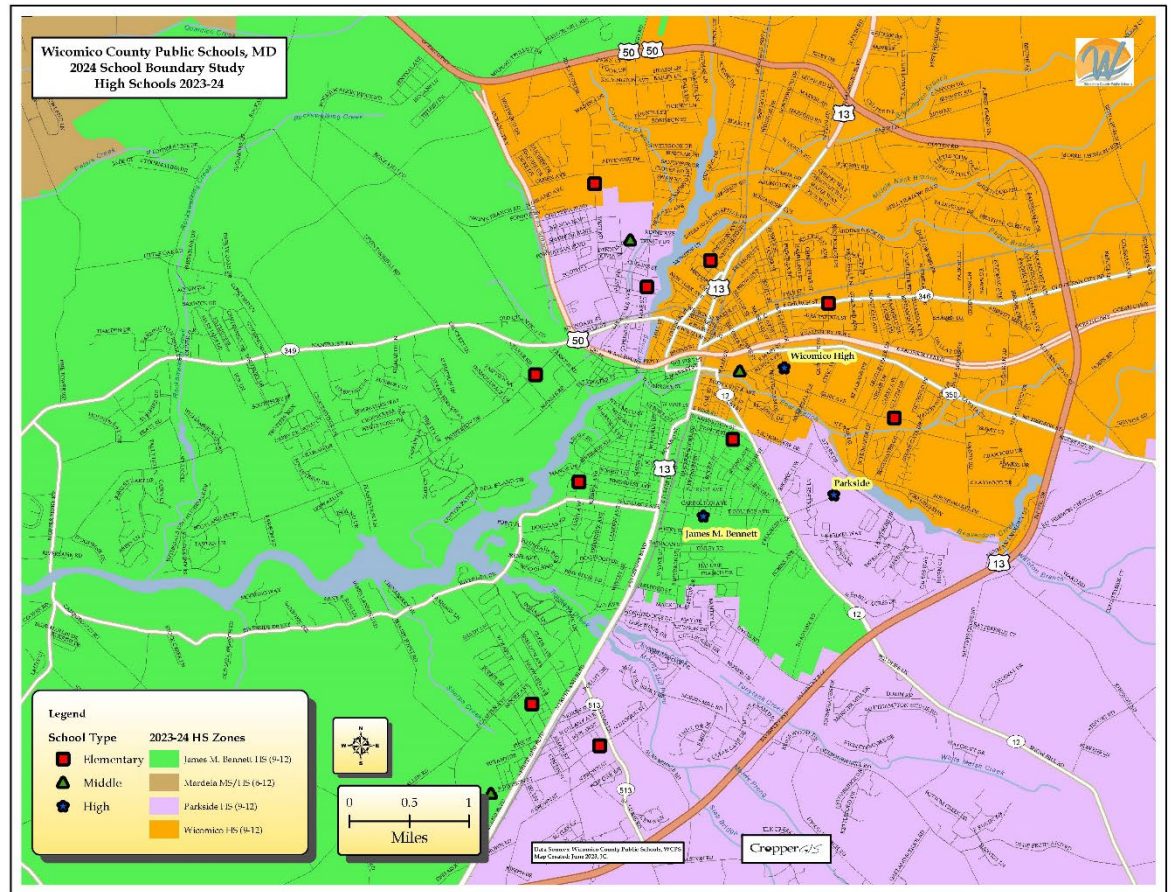
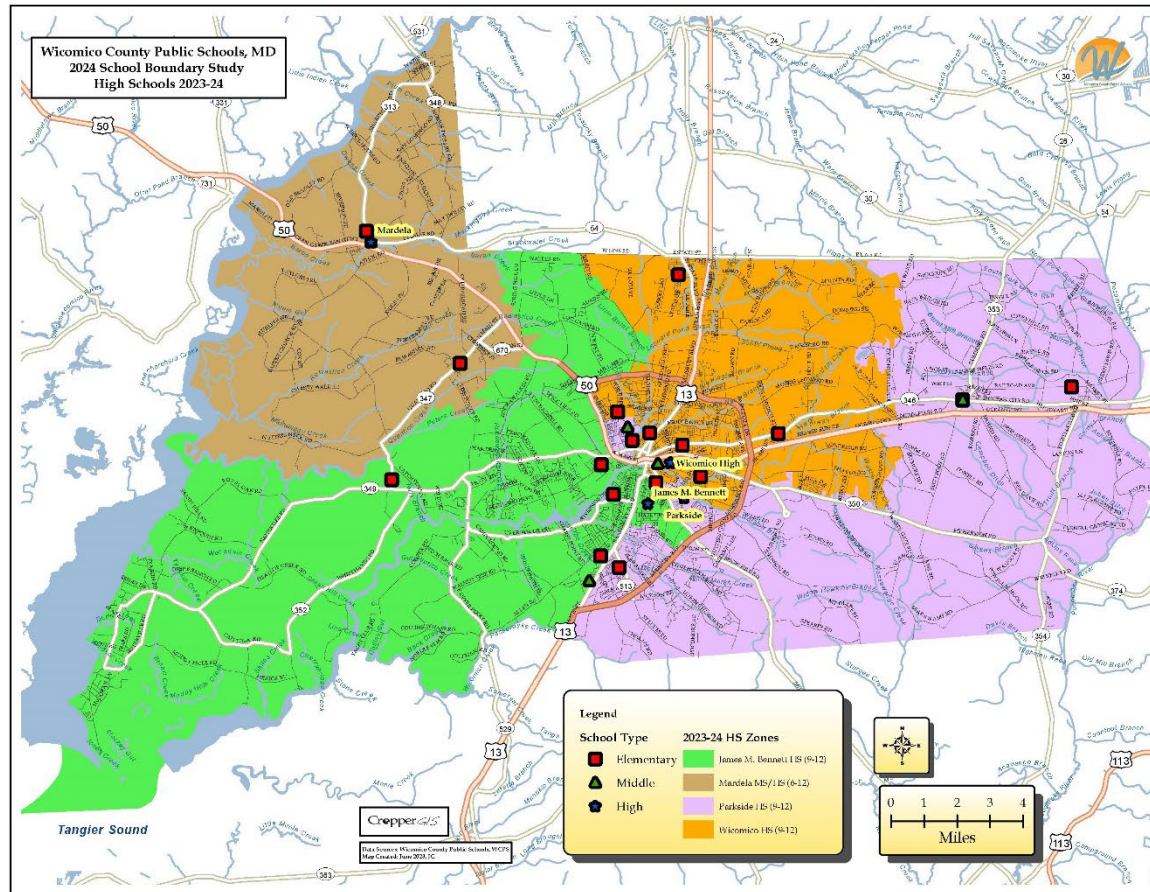
Current Elementary School Zones



Current Middle School Zones



Current High School Zones



Data Collected

Data availability and quality were central to this boundary study. Cropper GIS began the study by collecting data from various sources, including:

- WCPS– Official enrollment counts by school by grade, along with enrollment databases by address (Both 2023-24 and 2024-25). Data/feedback regarding transportation, school locations, facility information.
- City / County Sources– Base GIS data (address pts, municipalities, subdivisions, existing and planned developments, road networks, etc.)

Data collection efforts began through the summer, and information continued to be collected throughout the process if it was deemed useful.

Current Enrollment / Utilization

Enrollment and Utilization – Preliminary September 2024 Enrollment

Utilization Color Key
Within 10% of Study Area Average
10-15% from Study Area Average
15% or more higher than the Study Area Average
15% or more below the Study Area Average

School	Grade Config	2023 State Rated Capacity (SRC)	(09/30/2024) Total Headcount PS/PK-12 Grade Enrollment	(09/30/2024) Total PS/PK-12 Enrollment Utilization ¹			PK-12 Live and Attend In	PK-12 Live Out Attend In
				+/-	%	Projection		
Beaver Run ES	PK-2	664	743	79	111.9%	▲	729	14
East Salisbury ES	3-5	424	486	62	114.6%	▲	463	23
Charles H. Chipman ES	PK-1	384	303	-81	78.9%	▲	281	22
Glen Avenue ES	2-5	470	387	-83	82.3%	▲	374	13
Fruitland Primary School	PK-2	474	445	-29	93.9%	▲	416	29
Fruitland Intermediate School	3-5	378	343	-35	90.7%	▲	310	33
Northwestern ES	PK-5	251	340	89	135.5%	▲	312	28
Pemberton ES	PK-5	523	506	-17	96.7%	▲	443	63
Pinehurst ES	PK-5	467	564	97	120.8%	▲	511	53
Prince Street ES	PK-5	616	977	361	158.6%	▲	926	51
West Salisbury ES	PK-2	352	409	57	116.2%	▲	394	15
North Salisbury ES	3-5	506	526	20	104.0%	▼	292	234
Westside Primary School	PK-1	199	201	2	101.0%	▲	182	19
Westside Intermediate School	2-5	414	340	-74	82.1%	▼	311	29
Willards ES	PK-3	362	310	-52	85.6%	▲	277	33
Pittsville ES/MS	4-8	505	325	-180	64.4%	▲	285	40
Total Study Area ES		6,989	7,205	216	103.1%	▲	6,506	699
Bennett MS	6-8	1114	963	-151	86.4%	▲	911	52
Salisbury MS	6-8	999	847	-152	84.8%	▼	744	103
Wicomico MS	6-8	914	828	-86	90.6%	▲	799	29
Total MS		3,027	2,638	-389	87.1%	▲	2,454	184
Mardela MS/HS	6-12	616	741	125	120.3%	▲	652	89
James M. Bennett HS	9-12	1496	1477	-19	98.7%	▼	1383	94
Parkside HS	9-12	944	1273	329	134.9%	▼	1154	119
Wicomico HS	9-12	1215	1304	89	107.3%	▲	1249	55
Total HS		4,271	4,795	524	112.3%	▼	4,438	357

Counts based on Preliminary September 30, 2024 Enrollment

Current Enrolled Demographics

School	9-30-24 Race/Ethnicity Enrollment Percentage PK-12th						9-30-24 FARMS Enrolled Percentage PK-12th	
	Black	White	Hispanic or Latino	Two Or more Races/Ethnicities	Asian	Other	Yes	No
Beaver Run ES	52%	20%	17%	9%	1%	1%	76%	24%
East Salisbury ES	53%	16%	21%	9%	1%	0%	80%	20%
Charles H. Chipman ES	68%	13%	11%	8%	0%	1%	74%	26%
Glen Avenue ES	66%	13%	11%	8%	1%	1%	86%	14%
Fruitland Primary School	29%	40%	15%	11%	4%	0%	60%	40%
Fruitland Intermediate School	26%	47%	13%	10%	3%	1%	59%	41%
Northwestern ES	10%	79%	4%	6%	1%	0%	51%	49%
Pemberton ES	57%	25%	7%	8%	3%	1%	67%	33%
Pinehurst ES	58%	19%	15%	5%	2%	1%	72%	28%
Prince Street ES	54%	9%	27%	7%	2%	1%	78%	22%
West Salisbury ES	54%	11%	23%	7%	2%	3%	74%	26%
North Salisbury ES	38%	33%	15%	9%	5%	1%	55%	45%
Westside Primary School	13%	61%	12%	11%	2%	0%	62%	38%
Westside Intermediate School	12%	62%	14%	11%	1%	1%	54%	46%
Willards ES	4%	80%	7%	9%	0%	0%	58%	42%
Pittsville ES/MS	2%	76%	11%	8%	2%	0%	63%	37%
Total Study Area ES	42%	32%	16%	8%	2%	1%	69%	31%
Bennett MS	36%	32%	18%	8%	4%	1%	64%	36%
Salisbury MS	52%	23%	11%	8%	5%	1%	67%	33%
Wicomico MS	50%	18%	21%	8%	3%	1%	74%	26%
Total MS	46%	25%	17%	8%	4%	1%	68%	32%
Mardela MS/HS	11%	74%	6%	8%	1%	0%	49%	51%
James M. Bennett HS	37%	35%	16%	7%	4%	1%	59%	41%
Parkside HS	33%	45%	12%	6%	3%	1%	58%	42%
Wicomico HS	50%	18%	20%	9%	3%	1%	74%	26%
Total HS	35%	39%	14%	7%	3%	1%	61%	39%

Current Schools – Feeder Patterns

2023-24 ES Boundary	2023-24 MS Boundary	ES Attendance
Beaver Run (PK-2) / East Salisbury (3-5)	Wicomico MS (6-8)	100%
Chipman (PK-1) / Glen Avenue (2-5)	Bennett MS (6-8)	5%
Chipman (PK-1) / Glen Avenue (2-5)	Salisbury MS (6-8)	51%
Chipman (PK-1) / Glen Avenue (2-5)	Wicomico MS (6-8)	43%
Fruitland Primary (PK-2) / Fruitland Intern. (3-5)	Bennett MS (6-8)	100%
Northwestern ES (PK-5)	Mardela MS/HS (6-12)	100%
Pemberton ES (PK-5)	Salisbury MS (6-8)	100%
Pinehurst ES (PK-5)	Bennett MS (6-8)	74%
Pinehurst ES (PK-5)	Salisbury MS (6-8)	26%
Prince Street ES (PK-5)	Bennett MS (6-8)	76%
Prince Street ES (PK-5)	Wicomico MS (6-8)	24%
West Salisbury (PK-2) / North Salisbury (3-5)	Salisbury MS (6-8)	64%
West Salisbury (PK-2) / North Salisbury (3-5)	Wicomico MS (6-8)	36%
Westside Primary (PK-1) / Westside Intern. (2-5)	Mardela MS/HS (6-12)	36%
Westside Primary (PK-1) / Westside Intern. (2-5)	Salisbury MS (6-8)	64%
Willards (PK-3)	Pittsville ES/MS (4-8)	100%

2023-24 MS Boundary	2023-24 HS Boundary	MS Attendance
Bennett MS (6-8)	James M. Bennett HS (9-12)	64%
Bennett MS (6-8)	Parkside HS (9-12)	36%
Mardela MS/HS (6-12)	Mardela MS/HS (6-12)	100%
Salisbury MS (6-8)	James M. Bennett HS (9-12)	53%
Salisbury MS (6-8)	Parkside HS (9-12)	19%
Salisbury MS (6-8)	Wicomico HS (9-12)	28%
Wicomico MS (6-8)	Parkside HS (9-12)	12%
Wicomico MS (6-8)	Wicomico HS (9-12)	88%
Pittsville ES/MS (4-8)	Parkside HS (9-12)	100%

Boundary Configuration	ES to MS Splits	MS to HS Splits
Current	6	4

***This table highlights the total splits that exist in the current boundary configuration. A split occurs when the progression of students from one ES or MS feeds into 2 or more MS or HS.**

School Boundary Planning Team

The school boundary planning team met 1-2 times per month from September 2024 through December 2024 to analyze data, review attendance zones, and develop boundary options. The team developed 4 different scenarios over that time.

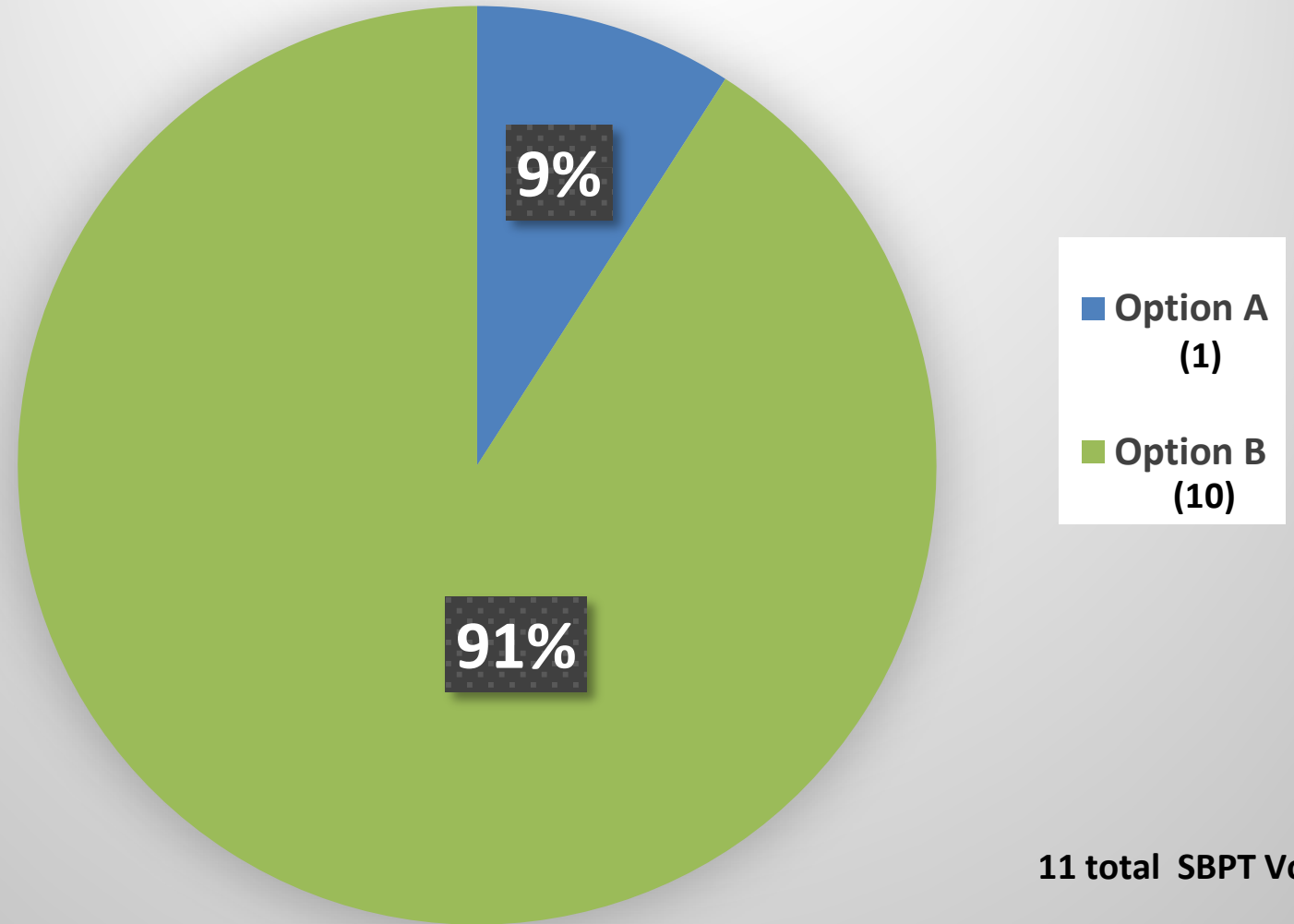
Two sets of Public Information Session Meetings (four meetings' total) were held throughout this boundary study to inform the public of the process and solicit feedback regarding draft options. A survey that went live following the second set of public information sessions on Nov. 21 elicited 138 responses. A general feedback form was also live throughout the life of this study that solicited 57 responses from the general public as of January 1, 2025.

Feedback from the public has been valuable, in conjunction with the data the SBPT has been analyzing, in order to share a recommendation that best aligns with boundary study factors and primary objectives for this school boundary study.

School Boundary Planning Team

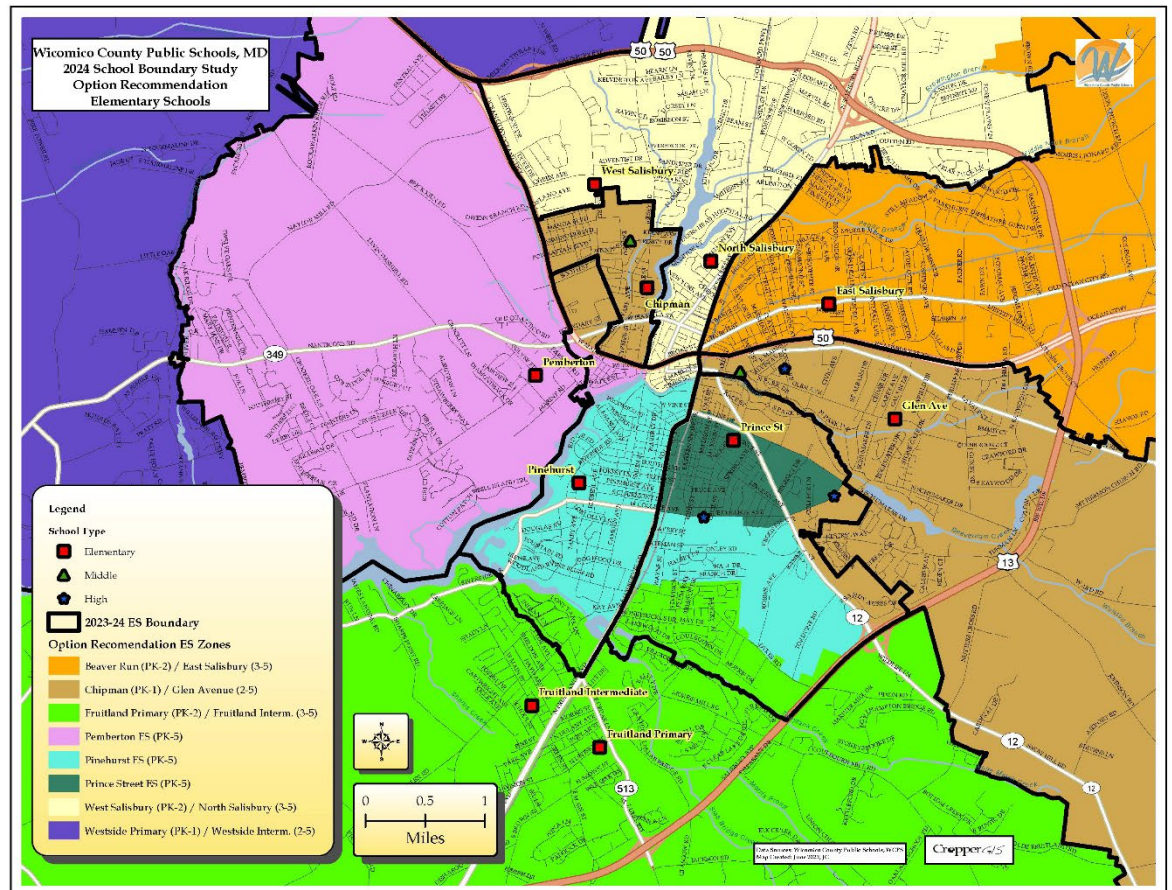
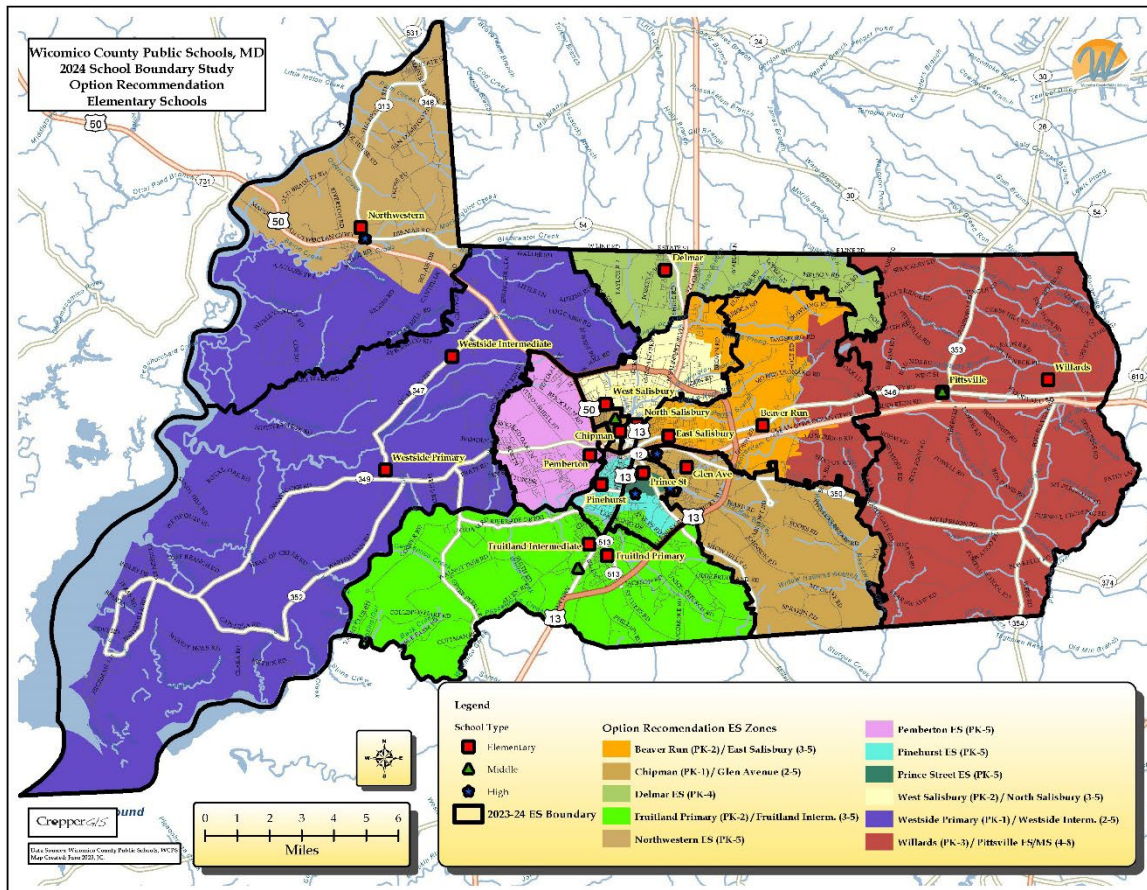
SBPT Recommendation Poll held on 12/13

The following is the recommended boundary option on behalf of the SBPT team and the consultant.

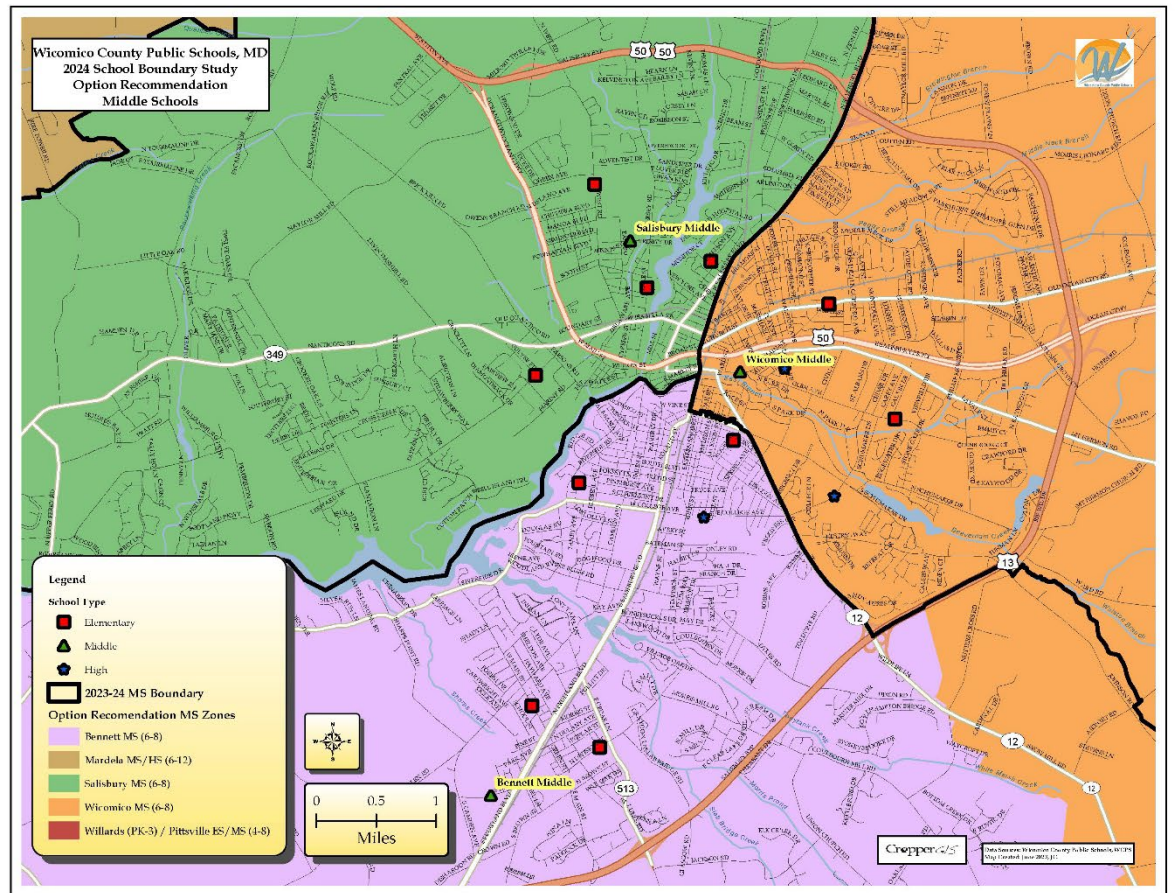
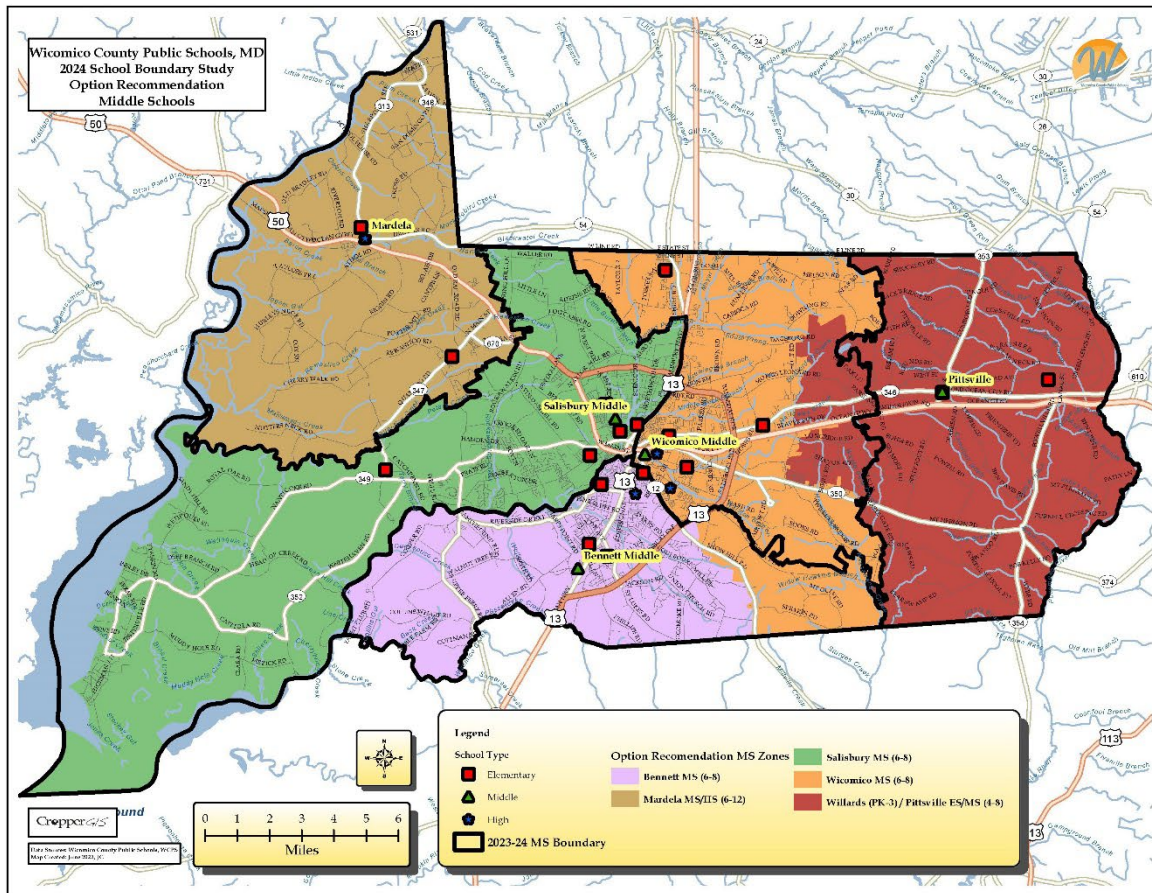


11 total SBPT Votes

Option Recommendation Elementary School Zones



Option Recommendation Middle School Zones



Interactive Webmap

- An online map is available to further inform all stakeholders on the work of the school boundary planning team.
- Current zones and the Recommendation can be viewed on the map.
- Other features can be turned on/off on the map, including planning blocks.
- Users can type in their address or click on the map to determine if an area is impacted in the recommendation
- Site can be viewed on any device, including mobile devices and tablets (with internet connection),
- Site address is:

<https://croppermap.com/wicomico/>

Interactive Webmap

Wicomico County, MD

View School Boundaries

- 2024-25 Boundaries
- Elementary Boundaries
- ES Recommendation
- Middle Boundaries
- MS Recommendation
- High Boundaries

Print

Enter an address here

Basemaps

6km
4mi

POWERED BY **esri**

Recommendation Enrollment / Utilization Cropper GIS

Utilization Color Key
Within 10% of Study Area Average
10-15% from Study Area Average
15% or more higher than the Study Area Average
15% or more below the Study Area Average

School	Grade Config	2023 State Rated Capacity (SRC)	Option Capacity (SRC)	(09/30/2024) Total Headcount PS/PK-12 Grade Enrollment	(09/30/2024) Total PS/PK-12 Enrollment Utilization ¹		Option Rec. Estimated Enrollment ¹ (Total Headcount)	Option Rec. Estimated Utilization	
					+ / -	%		+ / -	%
Beaver Run ES	PK-2	664	664	743	79	111.9%	715	51	107.7%
East Salisbury ES	3-5	424	424	486	62	114.6%	480	56	113.2%
Charles H. Chipman ES	PK-1	384	384	303	-81	78.9%	372	-12	96.9%
Glen Avenue ES	2-5	470	470	387	-83	82.3%	477	7	101.5%
Fruitland Primary School	PK-2	474	474	445	-29	93.9%	509	35	107.4%
Fruitland Intermediate School	3-5	378	378	343	-35	90.7%	403	25	106.6%
Northwestern ES	PK-5	251	251	340	89	135.5%	262	11	104.4%
Pemberton ES	PK-5	523	523	506	-17	96.7%	577	54	110.3%
Pinehurst ES	PK-5	467	467	564	97	120.8%	527	60	112.8%
Prince Street ES	PK-5	616	616	977	361	158.6%	653	37	106.0%
West Salisbury ES	PK-2	352	352	409	57	116.2%	391	39	111.1%
North Salisbury ES	3-5	506	506	526	20	104.0%	511	5	101.0%
Westside Primary School	PK-1	199	199	201	2	101.0%	231	32	116.1%
Westside Intermediate School	2-5	414	414	340	-74	82.1%	388	-26	93.7%
Willards ES	PK-3	362	362	310	-52	85.6%	370	8	102.2%
Pittsville ES/MS	4-8	505	505	325	-180	64.4%	363	-142	71.9%
Total Study Area ES		6,989	6,989	7,205	216	103.1%	7,229	240	103.4%
Bennett MS	6-8	1114	1114	963	-151	86.4%	950	-164	85.3%
Salisbury MS	6-8	999	999	847	-152	84.8%	847	-152	84.8%
Wicomico MS	6-8	914	914	828	-86	90.6%	817	-97	89.4%
Total MS		3,027	3,027	2,638	-389	87.1%	2,614	-413	86.4%
Mardela MS/HS	6-12	616	850	741	125	120.3%	741	-109	87.2%
James M. Bennett HS	9-12	1496	1496	1477	-19	98.7%	1477	-19	98.7%
Parkside HS	9-12	944	944	1273	329	134.9%	1273	329	134.9%
Wicomico HS	9-12	1215	1215	1304	89	107.3%	1304	89	107.3%
Total HS		4,271	4,505	4,795	524	112.3%	4,795	290	106.4%

Recommendation Option Demographics Cropper GIS

School	Option Rec. Race/Ethnicity Enrollment Percentage PK-12th						Option Rec. FARMS Enrolled Percentage PK-12th	
	Black	White	Hispanic or Latino	Two Or more Races/Ethnicities	Asian	Other	Yes	No
Beaver Run ES	54%	17%	17%	8%	2%	1%	76%	24%
East Salisbury ES	54%	14%	23%	8%	1%	0%	79%	21%
Charles H. Chipman ES	67%	12%	11%	8%	1%	1%	77%	23%
Glen Avenue ES	67%	12%	12%	7%	1%	1%	86%	14%
Fruitland Primary School	32%	37%	16%	11%	4%	0%	61%	39%
Fruitland Intermediate School	29%	42%	15%	9%	4%	1%	61%	39%
Northwestern ES	12%	76%	3%	8%	0%	0%	55%	45%
Pemberton ES	60%	21%	7%	7%	3%	1%	68%	32%
Pinehurst ES	56%	20%	16%	5%	2%	0%	71%	29%
Prince Street ES	52%	8%	31%	8%	0%	1%	79%	21%
West Salisbury ES	55%	10%	24%	7%	2%	3%	75%	25%
North Salisbury ES	38%	33%	14%	9%	5%	1%	55%	45%
Westside Primary School	12%	65%	11%	10%	2%	0%	59%	41%
Westside Intermediate School	11%	65%	13%	10%	1%	1%	52%	48%
Willards ES	5%	76%	8%	10%	0%	0%	60%	40%
Pittsville ES/MS	5%	74%	10%	8%	2%	0%	63%	37%
Total Study Area ES	42%	32%	15%	8%	2%	1%	69%	31%
Bennett MS	37%	32%	19%	8%	4%	1%	64%	36%
Salisbury MS	52%	23%	11%	8%	5%	1%	67%	33%
Wicomico MS	51%	17%	21%	8%	3%	1%	74%	26%
Total MS	46%	24%	17%	8%	4%	1%	68%	32%
Mardela MS/HS	11%	74%	6%	8%	1%	0%	49%	51%
James M. Bennett HS	37%	35%	16%	7%	4%	1%	59%	41%
Parkside HS	33%	45%	12%	6%	3%	1%	58%	42%
Wicomico HS	50%	18%	20%	9%	3%	1%	74%	26%
Total HS	35%	39%	14%	7%	3%	1%	61%	39%

Recommendation Feeder Patterns

Option Rec. ES Boundary	Option Rec. MS Boundary	ES Attendance
Beaver Run (PK-2) / East Salisbury (3-5)	Wicomico MS (6-8)	100%
Chipman (PK-1) / Glen Avenue (2-5)	Salisbury MS (6-8)	50%
Chipman (PK-1) / Glen Avenue (2-5)	Wicomico MS (6-8)	50%
Fruitland Primary (PK-2) / Fruitland Interm. (3-5)	Bennett MS (6-8)	100%
Northwestern ES (PK-5)	Mardela MS/HS (6-12)	100%
Pemberton ES (PK-5)	Salisbury MS (6-8)	100%
Pinehurst ES (PK-5)	Bennett MS (6-8)	100%
Prince Street ES (PK-5)	Bennett MS (6-8)	78%
Prince Street ES (PK-5)	Wicomico MS (6-8)	22%
West Salisbury (PK-2) / North Salisbury (3-5)	Salisbury MS (6-8)	69%
West Salisbury (PK-2) / North Salisbury (3-5)	Wicomico MS (6-8)	31%
Westside Primary (PK-1) / Westside Interm. (2-5)	Mardela MS/HS (6-12)	45%
Westside Primary (PK-1) / Westside Interm. (2-5)	Salisbury MS (6-8)	55%
Willards (PK-3)	Pittsville ES/MS (4-8)	100%

Option Rec. MS Boundary	Option Rec. HS Boundary	MS Attendance
Bennett MS (6-8)	James M. Bennett HS (9-12)	65%
Bennett MS (6-8)	Parkside HS (9-12)	35%
Mardela MS/HS (6-12)	Mardela MS/HS (6-12)	100%
Salisbury MS (6-8)	James M. Bennett HS (9-12)	53%
Salisbury MS (6-8)	Parkside HS (9-12)	19%
Salisbury MS (6-8)	Wicomico HS (9-12)	28%
Wicomico MS (6-8)	Parkside HS (9-12)	14%
Wicomico MS (6-8)	Wicomico HS (9-12)	86%
Pittsville ES/MS (4-8)	Parkside HS (9-12)	84%
Pittsville ES/MS (4-8)	Wicomico HS (9-12)	16%

Boundary Configuration	ES to MS Splits	MS to HS Splits
Current	6	4
Option Rec.	4	5

***This table highlights the total splits that exist in each boundary configuration. A split occurs when the progression of students from one ES or MS feeds into 2 or more MS or HS.**

Recommendation Option Impacts

Option	Total PK-5 Live and Attend In Students Impacted	Option	Total 6-8 Live and Attend In Students Impacted	Option	Total 9-12 Live and Attend In Students Impacted
ES Option Rec.	705	MS Option Rec.	37	HS Option Rec.	0
*Counts based on 9/30/204 Student Enrollment.		*Counts based on 9/30/204 Student Enrollment.		*Counts based on 9/30/204 Student Enrollment.	

2023-24 ES Boundary	ES Option Rec. Boundary	Total PK-5 Live and Attend In Students
Beaver Run (PK-2) / East Salisbury (3-5)	Beaver Run (PK-2) / East Salisbury (3-5)	1118
Beaver Run (PK-2) / East Salisbury (3-5)	Willards (PK-3) / Pittsville ES/MS (4-8)	74
Chipman (PK-1) / Glen Avenue (2-5)	Chipman (PK-1) / Glen Avenue (2-5)	655
Fruitland Primary (PK-2) / Fruitland Interm. (3-5)	Fruitland Primary (PK-2) / Fruitland Interm. (3-5)	726
Northwestern ES (PK-5)	Northwestern ES (PK-5)	234
Northwestern ES (PK-5)	Westside Primary (PK-1) / Westside Interm. (2-5)	78
Pemberton ES (PK-5)	Pemberton ES (PK-5)	443
Pinehurst ES (PK-5)	Chipman (PK-1) / Glen Avenue (2-5)	92
Pinehurst ES (PK-5)	Fruitland Primary (PK-2) / Fruitland Interm. (3-5)	19
Pinehurst ES (PK-5)	Pemberton ES (PK-5)	71
Pinehurst ES (PK-5)	Pinehurst ES (PK-5)	322
Pinehurst ES (PK-5)	West Salisbury (PK-2) / North Salisbury (3-5)	7
Prince Street ES (PK-5)	Chipman (PK-1) / Glen Avenue (2-5)	67
Prince Street ES (PK-5)	Fruitland Primary (PK-2) / Fruitland Interm. (3-5)	105
Prince Street ES (PK-5)	Pinehurst ES (PK-5)	152
Prince Street ES (PK-5)	Prince Street ES (PK-5)	602
West Salisbury (PK-2) / North Salisbury (3-5)	Beaver Run (PK-2) / East Salisbury (3-5)	40
West Salisbury (PK-2) / North Salisbury (3-5)	West Salisbury (PK-2) / North Salisbury (3-5)	646
Westside Primary (PK-1) / Westside Interm. (2-5)	Westside Primary (PK-1) / Westside Interm. (2-5)	493
Willards (PK-3) / Pittsville ES/MS (4-8)	Willards (PK-3) / Pittsville ES/MS (4-8)	388

2023-24 MS Boundary	MS Option Rec. Boundary	Total 6-8 Live and Attend In Students
Bennett MS (6-8)	Bennett MS (6-8)	898
Bennett MS (6-8)	Wicomico MS (6-8)	13
Mardela MS/HS (6-12)	Mardela MS/HS (6-12)	264
Salisbury MS (6-8)	Salisbury MS (6-8)	744
Wicomico MS (6-8)	Wicomico MS (6-8)	775
Wicomico MS (6-8)	Pittsville ES/MS (4-8)	24
Pittsville ES/MS (4-8)	Pittsville ES/MS (4-8)	174

2023-24 HS Boundary	HS Option Rec. Boundary	Total 9-12 Live and Attend In Students
James M. Bennett HS (9-12)	James M. Bennett HS (9-12)	1301
Mardela MS/HS (6-12)	Mardela MS/HS (6-12)	329
Parkside HS (9-12)	Parkside HS (9-12)	1116
Wicomico HS (9-12)	Wicomico HS (9-12)	1246

Communication Logistics

Visit the boundary study Web site at wcpsboundarystudy.org

- All previous maps, statistics, presentations, are available via the school boundary webpage to review.
- Submit comments via the online [Wicomico County Public Schools, MD - 2024 School Boundary Study General Feedback Form](https://wcpsboundarystudy.org)

Project Overview

Recent / Useful Documents:
[Wicomico County Public Schools Web Page](#)
[Public Information 2 Survey Report](#)
[Public Information Session 2 Statistical Handout](#)
[Public Information Session 2 Eqat Facts Sheet](#)

Background

In accordance with district policy 3.8 and the Annotated Code of Maryland, the Wicomico County Board of Education (WGBOE) is vested with the authority to delineate the geographical attendance area for each public school. Fluctuations in enrollment and shifts in the educational landscape may necessitate the modification of attendance areas. Notably, due to instances of overcrowding and underutilization in numerous elementary schools within the district, the Wicomico County Public School District has initiated a comprehensive school boundary study.

The primary aim of this study is to address capacity concerns and establish equitable utilization levels across elementary schools in the district. Sixteen of the seventeen elementary schools within the district will be subject to this boundary study, while Delmar Elementary will be exempt from any attendance boundary modifications. Additionally, minimal adjustments at the middle school and high school levels are anticipated to realign feeder patterns as students progress through the educational system.

Project Objectives

- To balance utilization/relieve overcrowding among the elementary schools within the study area.
- To make best efforts to ensure that Fall 2025 boundary changes align with long-term facilities and Elementary-to-Middle-to-High School feeder patterns.

Timeline for School Boundary Study

	June '24	July '24	Aug. '24	Sept. '24	Oct. '24	Nov. '24	Dec. '24	Jan. '25	Feb. '25
Presentation of Process with Board of Education	6/25								
Board of Education Approval of School Boundary Study Process	7/9								
Data Collection									
Data Analysis/Assimilation									
Background Report / Baseline Options Development									
School Boundary Planning Team Work									
Introduction to upcoming process (YouTube Recording)			8/27						
Public Information Session #1: Present Project Process, Criteria, Timeline, and School Boundary Study Objectives to Community. On-site meetings at 4pm and 6pm. 2 different locations.				9/19					
Staff Presentations to Communities (if needed)				TBD					
Public Information Session #2: Present DRAFT School Boundary Plans to General Public for Comment/Feedback. On-site meetings at 4pm and 6pm to review options and q/a at end of session. 2 different locations.							11/21		
Staff Presentations to Communities (if needed)							TBD		
Board of Education									
Work session to Present Final School Boundary Plan Recommendation									1/7
Public Hearing									1/14
Work session on Potential Modified School Boundary Plan (if needed)									1/28
Vote on School Boundary Plan									2/11

Current Materials

Wicomico County Public Schools 2024-2025 School Boundary Study: Suggestions and

Lekol Letta Distri Wicomico 2024-2025 Etd Lini: Lekol. Sileeyon at Keyyon

Escuelas Publicas del Condado de Wicomico 2024-2025 Estudio de Lmite Escolar: Sugerencias y Preguntas

Questions & Next Steps

January 14,
2025

Board of Education Public Hearing

-Location: West Salisbury Elementary, 1321 West
Road, Salisbury, MD

-Time: 7PM

February 11,
2025

Board of Education Vote Meeting

-Location: 101 Long Avenue, Salisbury, MD

-Time: 7PM



Thank You!



Cropper GIS