



# 2024-2025 School Boundary Study

**Public Information Sessions 2**  
**November 21, 2024**

*Presented by: Wicomico County Public Schools  
and Cropper GIS Consulting*



**Cropper GIS**

# ***Welcome and Introductions***



# Tonight's Purpose

- **Learn** how the community-based school boundary study process has been working.
- **Review DRAFT** boundary options for the Elementary, Middle, & High Schools in the study area and speak directly with School Boundary Planning Team (SBPT) members.
- **Complete** online survey related to the options to provide valuable input to the SBPT.

# School Boundary Study

Cropper GIS Consulting was hired by Wicomico County Public Schools to facilitate and manage the project. Our firm is tasked to:

- A. **Develop** supporting materials to help facilitate the study.
- B. **Facilitate** an expert-based process of developing a student attendance boundary plan.
- C. **Empower** the community throughout the process.
- D. **Leverage** expertise to develop logical, efficient, and effective school boundary options with the planning team.
- E. **Present** a *recommended* boundary plan on behalf of the School Boundary Planning Team (SBPT) to the Board of Education.

# The Facilitator

## Cropper GIS Consulting, LLC

- K-12 school planning is our business and our passion. Our specialty is facilitating boundary processes.
- Cropper GIS works with K-12 school districts to:
  - Develop boundary plans
  - Facilitate community engagement
  - Perform demographic studies
  - Prepare long-range facility master plans
  - Conduct housing and pupil yield-factor studies

## Matthew Cropper, Cropper GIS

- 20+ years experience providing GIS mapping and analysis services to school districts and other clients
- Facilitated boundary change study projects across the U.S.
- Published numerous times on topics related to K-12 facility and boundary change processes

# Stakeholders

Outline of Stakeholder Responsibilities	
Consultant	<ul style="list-style-type: none"> <li>• Schedule and facilitate School Boundary Planning Team meetings.</li> <li>• Communicate updates with planning team, including updated handout and meeting schedule logistics.</li> <li>• Conduct public meetings to solicit feedback related to draft options that are under consideration.</li> <li>• Support the district in providing materials such as presentations, handouts, and online interactive maps for the public's consumption.</li> <li>• Coordinate and summarize online feedback received from general public and school boundary planning team.</li> </ul>
School Boundary Planning Team	<ul style="list-style-type: none"> <li>• Consists of key WCPS district administrators including central office, senior leadership, department staff personnel, planning, and Wicomico County community members.</li> <li>• Group will work to review draft options that are being developed in preparation to share with the Board of Education and public.</li> <li>• Review input provided from the consultant and general public regarding draft options and continue to modify maps with a focus on the best solution for all students as a whole.</li> <li>• Share a boundary plan with the Board of Education.</li> </ul>
General Public	<ul style="list-style-type: none"> <li>• Informed through website.</li> <li>• Invited to submit comments and input throughout the entire process.</li> <li>• Invited to participate in public information sessions and to provide input via surveys and online general feedback form.</li> </ul>
Board of Education	<ul style="list-style-type: none"> <li>• Charge school boundary planning team with its responsibilities.</li> <li>• Identify questions the SBPT is expected to answer.</li> <li>• Advise staff and the process regarding policy-related considerations and other board-level decisions.</li> <li>• Vote on a school boundary plan.</li> </ul>

# Timeline

## Timeline for School Boundary Study

	June '24	July '24	Aug. '24	Sept. '24	Oct. '24	Nov. '24	Dec. '24	Jan. '25	Feb. '25
<i>Presentation of Process with Board of Education</i>	6/25								
<i>Board of Education Approval of School Boundary Study Process</i>		7/9							
<i>Data Collection</i>	PHASE 1								
<i>Data Analysis / Assimilation</i>			PHASE 2						
<i>Background Report / Baseline Options Development</i>			PHASE 3						
<i>School Boundary Planning Team Work</i>			PHASE 4						
Introduction to upcoming process (YouTube Recording)			8/27						
Public Information Session #1 : Present Project Process, Criteria, Timeline, and School Boundary Study Objectives to Community. On-site meetings at 4pm and 6pm. 2 different locations.				9/19					
Staff Presentations to Communities (if needed)				TBD					
Public Information Session #2: Present DRAFT School Boundary Plans to General Public for Comment/Feedback. On-site meetings at 4pm and 6pm to review options and q/a at end of session. 2 different locations.						11/21			
Staff Presentations to Communities (if needed)							TBD		
<b>Board of Education</b>									
<i>Work session to Present Final School Boundary Plan Recommendation</i>								1/7	
<i>Public Hearing</i>								1/14	
<i>Work session on Potential Modified School Boundary Plan (if needed)</i>								1/28	
<i>Vote on School Boundary Plan</i>									2/11

# Project Objectives

In accordance with School Attendance Areas and Redistricting Policy (SFS-GEN-PL-032), the Wicomico County Board of Education (WCBOE) is vested with the authority to delineate the geographical attendance area for each public school. Fluctuations in enrollment and shifts in the educational landscape may necessitate the modification of attendance areas. Notably, due to instances of overcrowding and underutilization in numerous elementary schools within the district, the Wicomico County Public School (WCPS) System has initiated a comprehensive school boundary study.

The WCPS boundary study is tasked with meeting the following key objectives:

- To balance utilization/relieve overcrowding among the elementary schools within the study area (Delmar Elementary is **not** included in this study).
- To make best efforts to ensure that Fall 2025 boundary changes align with long-term facilities and Elementary-to-Middle-to-High School feeder patterns.



# Boundary Study Factors

- a) Educational welfare of students
- b) Frequency of boundary changes, with every attempt being made to limit individual student boundary changes to not more than once every five years
- c) Proximity to schools, in order to maximize walkers and minimize distance or time of bus runs
- d) Student demographics, to maintain or increase the diversity among schools to reflect the diversity of the region and school system
- e) Established feeder patterns
- f) Impact on neighborhoods and communities
- g) Impact on specialized school programs or a change to school capacity
- h) Instructional and operational capacity of involved schools
- i) Capacity trends
- j) Capital plans
- k) Geographic features

# SBPT's Progress

## Work done to date

- Data and information examined includes school enrollment (grade level, attending school and counts in neighborhoods, demographics), school capacity, zoning maps, & future development trends.
- Meetings with staff and SBPT members to review relevant data and draft options for consideration.
- Options are considered DRAFT throughout the process; continued dialog and consideration of data is always encouraged.

# SBPT's Progress

## Work done to date

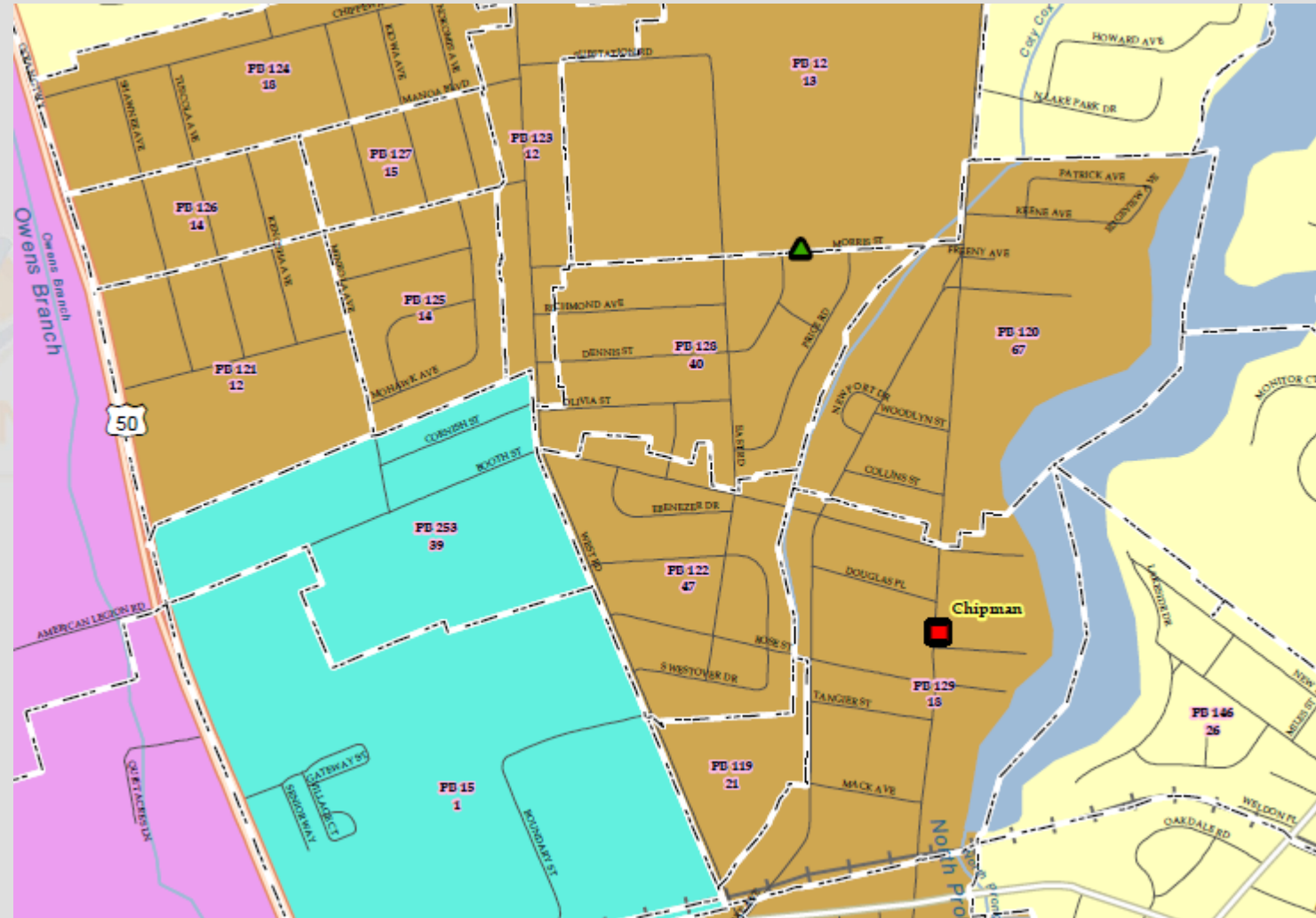
- SBPT's charge is to recommend one option for the Consultant to present to the Board of Education
- Nothing will be FINAL until the Board of Education votes on and approves a plan

# Interpreting Maps

## Page 5-8 of Background Report & Appendix A

Planning Blocks: small areas for examining student populations:

- Map titles and notes clarify what each planning block map represents.
- Labels within planning blocks represent one of the following:
  - Planning block ID (PB #) Map Note: Based on Fall 2024 Student Enrollment. The top labels show the Planning block ID (PB #). The bottom labels show the number of PK-5 WCPS students that live and attend their boundary school within the study area.



# Interpreting Tables

## Enrollment and Utilization – Preliminary September 2024 Enrollment

Utilization Color Key
Within 10% of Study Area Average
10-15% from Study Area Average
15% or more higher than the Study Area Average
15% or more below the Study Area Average

School	Grade Config	2023 State Rated Capacity (SRC)	(09/30/2024) Total Headcount PS/PK-12 Grade Enrollment	(09/30/2024) Total PS/PK-12 Enrollment Utilization <sup>1</sup>			PK-12 Live and Attend In	PK-12 Live Out Attend In
				+ / -	%	Projection		
Beaver Run ES	PK-2	664	743	79	111.9%	▲	729	14
East Salisbury ES	3-5	424	486	62	114.6%	▲	463	23
Charles H. Chipman ES	PK-1	384	303	-81	78.9%	▲	281	22
Glen Avenue ES	2-5	470	387	-83	82.3%	▲	374	13
Fruitland Primary School	PK-2	474	445	-29	93.9%	▲	416	29
Fruitland Intermediate School	3-5	378	343	-35	90.7%	▲	310	33
Northwestern ES	PK-5	251	340	89	135.5%	▲	312	28
Pemberton ES	PK-5	523	506	-17	96.7%	▲	443	63
Pinehurst ES	PK-5	467	564	97	120.8%	▲	511	53
Prince Street ES	PK-5	616	977	361	158.6%	▲	926	51
West Salisbury ES	PK-2	352	409	57	116.2%	▲	394	15
North Salisbury ES	3-5	506	526	20	104.0%	▼	292	234
Westside Primary School	PK-1	199	201	2	101.0%	▲	182	19
Westside Intermediate School	2-5	414	340	-74	82.1%	▼	311	29
Willards ES	PK-3	362	310	-52	85.6%	▲	277	33
Pittsville ES/MS	4-8	505	325	-180	64.4%	▲	285	40
<b>Total Study Area ES</b>		<b>6,989</b>	<b>7,205</b>	<b>216</b>	<b>103.1%</b>	▲	<b>6,506</b>	<b>699</b>
Bennett MS	6-8	1114	963	-151	86.4%	▲	911	52
Salisbury MS	6-8	999	847	-152	84.8%	▼	744	103
Wicomico MS	6-8	914	828	-86	90.6%	▲	799	29
<b>Total MS</b>		<b>3,027</b>	<b>2,638</b>	<b>-389</b>	<b>87.1%</b>	▲	<b>2,454</b>	<b>184</b>
Mardela MS/HS	6-12	616	741	125	120.3%	▲	652	89
James M. Bennett HS	9-12	1496	1477	-19	98.7%	▼	1383	94
Parkside HS	9-12	944	1273	329	134.9%	▼	1154	119
Wicomico HS	9-12	1215	1304	89	107.3%	▲	1249	55
<b>Total HS</b>		<b>4,271</b>	<b>4,795</b>	<b>524</b>	<b>112.3%</b>	▼	<b>4,438</b>	<b>357</b>

Counts based on Preliminary September 30, 2024 Enrollment

# Interpreting Tables

Estimated Enrollment, Over/Under Capacity, & Utilization Tables

School	Grade Config	2023 State Rated Capacity (SRC)	Option Capacity (SRC)	(09/30/2024) Total Headcount PS/PK-12 Grade Enrollment	(09/30/2024) Total PS/PK-12 Enrollment Utilization <sup>1</sup>		Option A Estimated Enrollment <sup>1</sup> (Total Headcount)	Option A Estimated Utilization		Option B Estimated Enrollment <sup>1</sup> (Total Headcount)	Option B Estimated Utilization	
					+ / -	%		+ / -	%		+ / -	%
Beaver Run ES	PK-2	664	664	743	79	111.9%	704	40	106.0%	715	51	107.7%
East Salisbury ES	3-5	424	424	486	62	114.6%	467	43	110.1%	480	56	113.2%
Charles H. Chipman ES	PK-1	384	384	303	-81	78.9%	427	43	111.2%	372	-12	96.9%
Glen Avenue ES	2-5	470	470	387	-83	82.3%	541	71	115.1%	477	7	101.5%
Fruitland Primary School	PK-2	474	474	445	-29	93.9%	461	-13	97.3%	509	35	107.4%
Fruitland Intermediate School	3-5	378	378	343	-35	90.7%	356	-22	94.2%	403	25	106.6%
Northwestern ES	PK-5	251	251	340	89	135.5%	246	-5	98.0%	262	11	104.4%
Pemberton ES	PK-5	523	523	506	-17	96.7%	535	12	102.3%	577	54	110.3%
Pinehurst ES	PK-5	467	467	564	97	120.8%	539	72	115.4%	527	60	112.8%
Prince Street ES	PK-5	616	616	977	361	158.6%	617	1	100.2%	653	37	106.0%
West Salisbury ES	PK-2	352	352	409	57	116.2%	414	62	117.6%	391	39	111.1%
North Salisbury ES	3-5	506	506	526	20	104.0%	534	28	105.5%	511	5	101.0%
Westside Primary School	PK-1	199	199	201	2	101.0%	230	31	115.6%	231	32	116.1%
Westside Intermediate School	2-5	414	414	340	-74	82.1%	410	-4	99.0%	388	-26	93.7%
Willards ES	PK-3	362	362	310	-52	85.6%	381	19	105.2%	370	8	102.2%
Pittsville ES/MS	4-8	505	505	325	-180	64.4%	379	-126	75.0%	363	-142	71.9%
<b>Total Study Area ES</b>		<b>6,989</b>	<b>6,989</b>	<b>7,205</b>	<b>216</b>	<b>103.1%</b>	<b>7,241</b>	<b>252</b>	<b>103.6%</b>	<b>7,229</b>	<b>240</b>	<b>103.4%</b>
Bennett MS	6-8	1114	1114	963	-151	86.4%	963	-151	86.4%	950	-164	85.3%
Salisbury MS	6-8	999	999	847	-152	84.8%	847	-152	84.8%	847	-152	84.8%
Wicomico MS	6-8	914	914	828	-86	90.6%	792	-122	86.7%	817	-97	89.4%
<b>Total MS</b>		<b>3,027</b>	<b>3,027</b>	<b>2,638</b>	<b>-389</b>	<b>87.1%</b>	<b>2,602</b>	<b>-425</b>	<b>86.0%</b>	<b>2,614</b>	<b>-413</b>	<b>86.4%</b>
Mardela MS/HS	6-12	616	850	741	125	120.3%	741	-109	87.2%	741	-109	87.2%
James M. Bennett HS	9-12	1496	1496	1477	-19	98.7%	1559	63	104.2%	1477	-19	98.7%
Parkside HS	9-12	944	944	1273	329	134.9%	1191	247	126.2%	1273	329	134.9%
Wicomico HS	9-12	1215	1215	1304	89	107.3%	1304	89	107.3%	1304	89	107.3%
<b>Total HS</b>		<b>4,271</b>	<b>4,505</b>	<b>4,795</b>	<b>524</b>	<b>112.3%</b>	<b>4,795</b>	<b>290</b>	<b>106.4%</b>	<b>4,795</b>	<b>290</b>	<b>106.4%</b>

Utilization Color Key
Within 10% of Study Area Average
10-15% from Study Area Average
15% or more higher than the Study Area Average
15% or more below the Study Area Average

# Interpreting Tables

## Impact Tables

Student Impact Estimates	
Option	Total PK-5 Live and Attend In Students Impacted
ES Option A	852
ES Option B	705
*Counts based on 9/30/204 Student Enrollment.	

DRAFT Elementary Option A shown as sample. All tables included in handout.

Key: **Green** represents PK-5th grade “Live & Attend In In” students who live in the boundary and are not impacted by the option.

**Pink** represents the number of PK-5th grade “Live & Attend In” students who live in the boundary and are impacted by the option.

2023-24 ES Boundary	ES Option A Boundary	Total PK-5 Live and Attend In Students
Beaver Run (PK-2) / East Salisbury (3-5)	Beaver Run (PK-2) / East Salisbury (3-5)	1103
Beaver Run (PK-2) / East Salisbury (3-5)	Willards (PK-3) / Pittsville ES/MS (4-8)	89
Chipman (PK-1) / Glen Avenue (2-5)	Chipman (PK-1) / Glen Avenue (2-5)	626
Chipman (PK-1) / Glen Avenue (2-5)	Fruitland Primary (PK-2) / Fruitland Interm. (3-5)	29
Fruitland Primary (PK-2) / Fruitland Interm. (3-5)	Fruitland Primary (PK-2) / Fruitland Interm. (3-5)	726
Northwestern ES (PK-5)	Northwestern ES (PK-5)	218
Northwestern ES (PK-5)	Westside Primary (PK-1) / Westside Interm. (2-5)	94
Pemberton ES (PK-5)	Pemberton ES (PK-5)	401
Pemberton ES (PK-5)	Westside Primary (PK-1) / Westside Interm. (2-5)	42
Pinehurst ES (PK-5)	Chipman (PK-1) / Glen Avenue (2-5)	92
Pinehurst ES (PK-5)	Pemberton ES (PK-5)	71
Pinehurst ES (PK-5)	Pinehurst ES (PK-5)	341
Pinehurst ES (PK-5)	West Salisbury (PK-2) / North Salisbury (3-5)	7
Prince Street ES (PK-5)	Chipman (PK-1) / Glen Avenue (2-5)	215
Prince Street ES (PK-5)	Pinehurst ES (PK-5)	145
Prince Street ES (PK-5)	Prince Street ES (PK-5)	566
West Salisbury (PK-2) / North Salisbury (3-5)	Beaver Run (PK-2) / East Salisbury (3-5)	31
West Salisbury (PK-2) / North Salisbury (3-5)	West Salisbury (PK-2) / North Salisbury (3-5)	655
Westside Primary (PK-1) / Westside Interm. (2-5)	West Salisbury (PK-2) / North Salisbury (3-5)	37
Westside Primary (PK-1) / Westside Interm. (2-5)	Westside Primary (PK-1) / Westside Interm. (2-5)	456
Willards (PK-3) / Pittsville ES/MS (4-8)	Willards (PK-3) / Pittsville ES/MS (4-8)	388

# Interpreting Tables

## Feeder Pattern Tables

Option	ES to MS Splits	MS to HS Splits
Current	6	4
Option A	3	5
Option B	4	5

**\*This table highlights the total splits that exist in the current boundary configuration. A split occurs when the progression of students from one ES or MS feeds into 2 or more MS or HS.**

Option A ES Boundary	Option A MS Boundary	ES Attendance
Beaver Run (PK-2) / East Salisbury (3-5)	Wicomico MS (6-8)	100%
Chipman (PK-1) / Glen Avenue (2-5)	Salisbury MS (6-8)	47%
Chipman (PK-1) / Glen Avenue (2-5)	Wicomico MS (6-8)	53%
Fruitland Primary (PK-2) / Fruitland Interm. (3-5)	Bennett MS (6-8)	100%
Northwestern ES (PK-5)	Mardela MS/HS (6-12)	100%
Pemberton ES (PK-5)	Salisbury MS (6-8)	100%
Pinehurst ES (PK-5)	Bennett MS (6-8)	100%
Prince Street ES (PK-5)	Bennett MS (6-8)	100%
West Salisbury (PK-2) / North Salisbury (3-5)	Salisbury MS (6-8)	71%
West Salisbury (PK-2) / North Salisbury (3-5)	Wicomico MS (6-8)	29%
Westside Primary (PK-1) / Westside Interm. (2-5)	Mardela MS/HS (6-12)	44%
Westside Primary (PK-1) / Westside Interm. (2-5)	Salisbury MS (6-8)	56%
Willards (PK-3) / Pittsville ES/MS (4-8)	Willards (PK-3) / Pittsville ES/MS (4-8)	100%



# Review of DRAFT Options

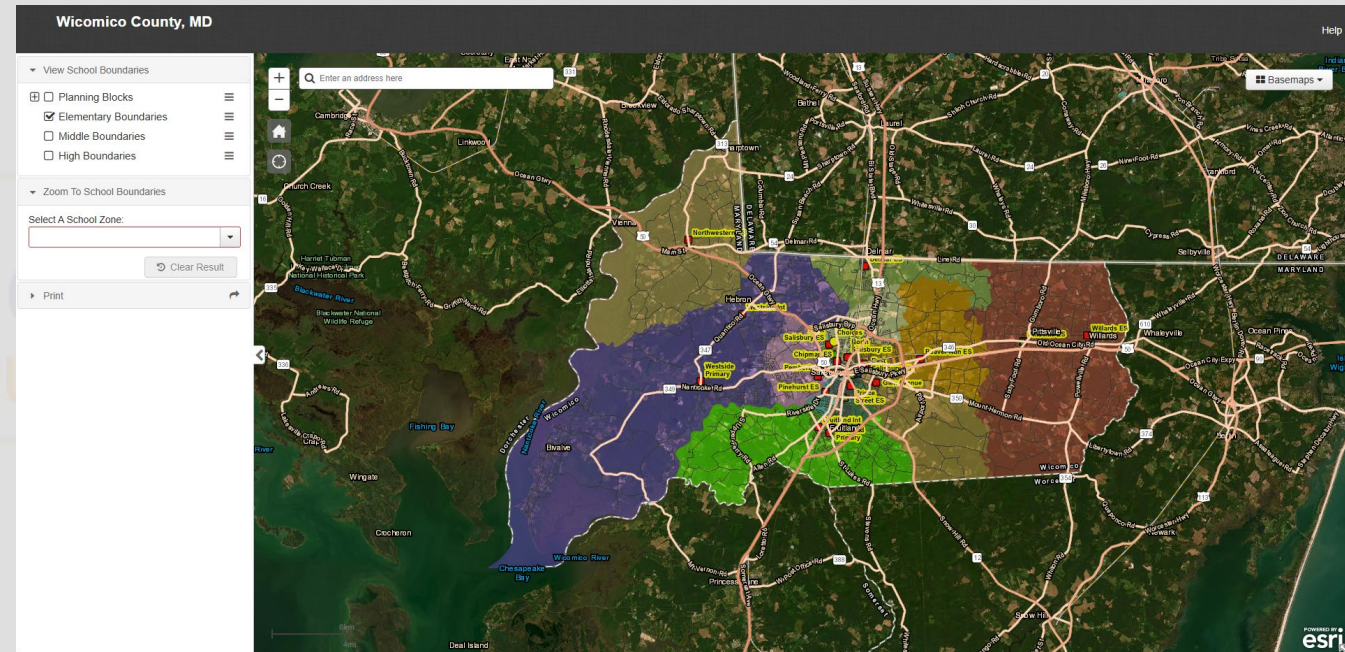
8.5"x11" maps, as well as plots of maps are available for review

Option maps are also now on interactive Web

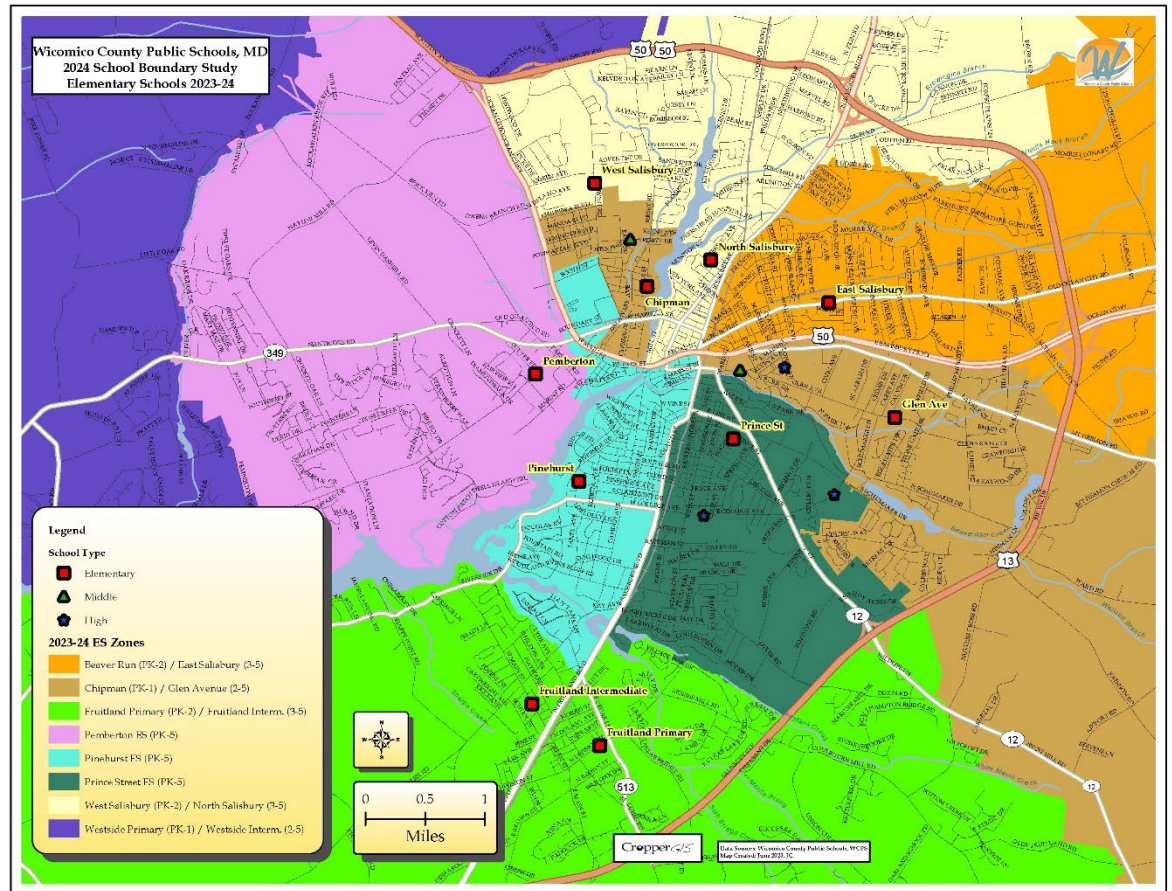
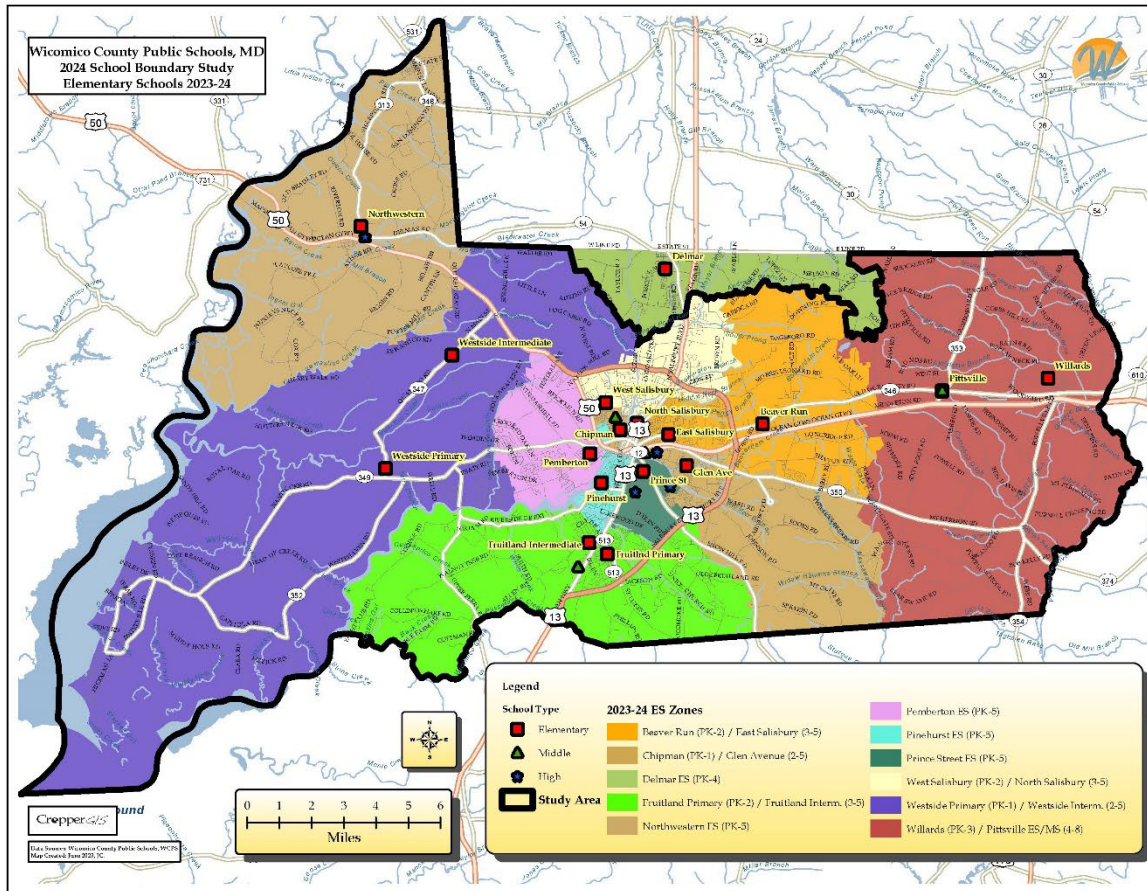
<https://croppermap.com/wicomico/>

Copies of the handouts, including small and large format maps are posted on the School Boundary Study Website:

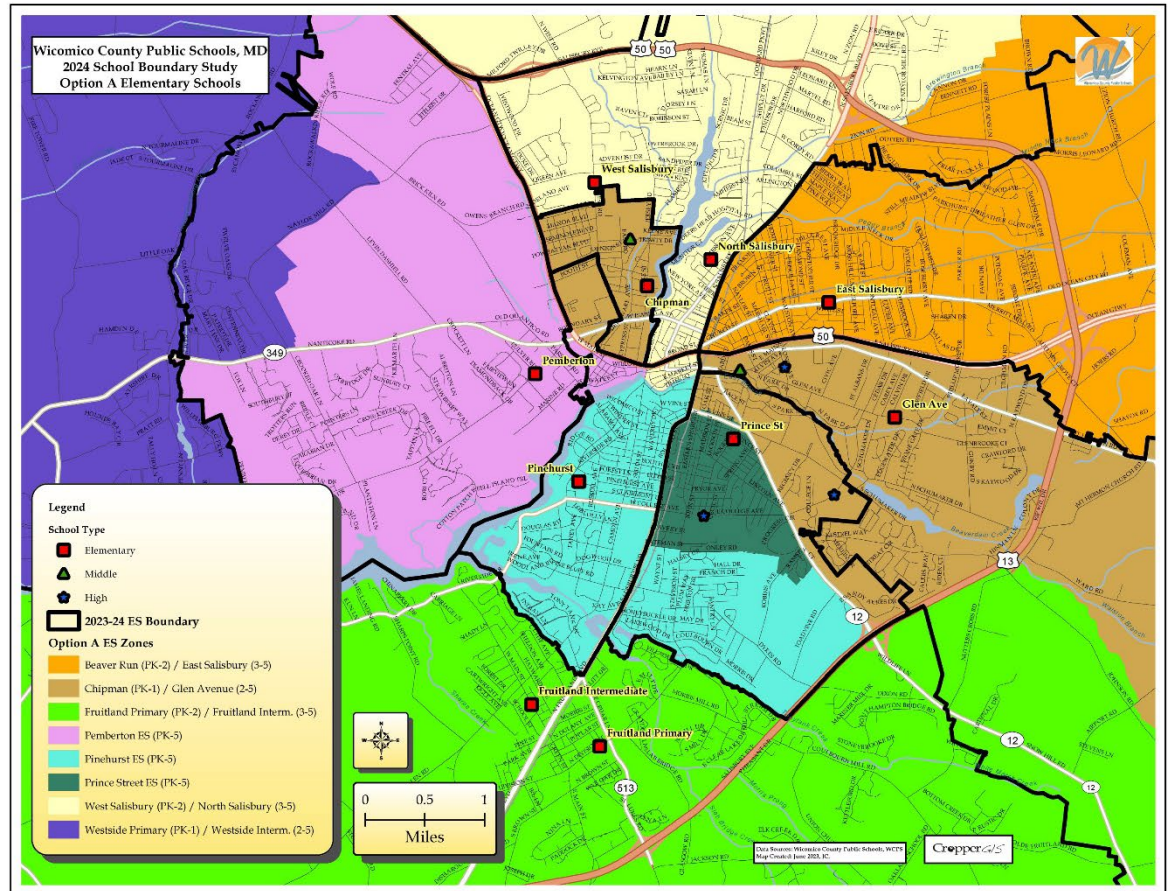
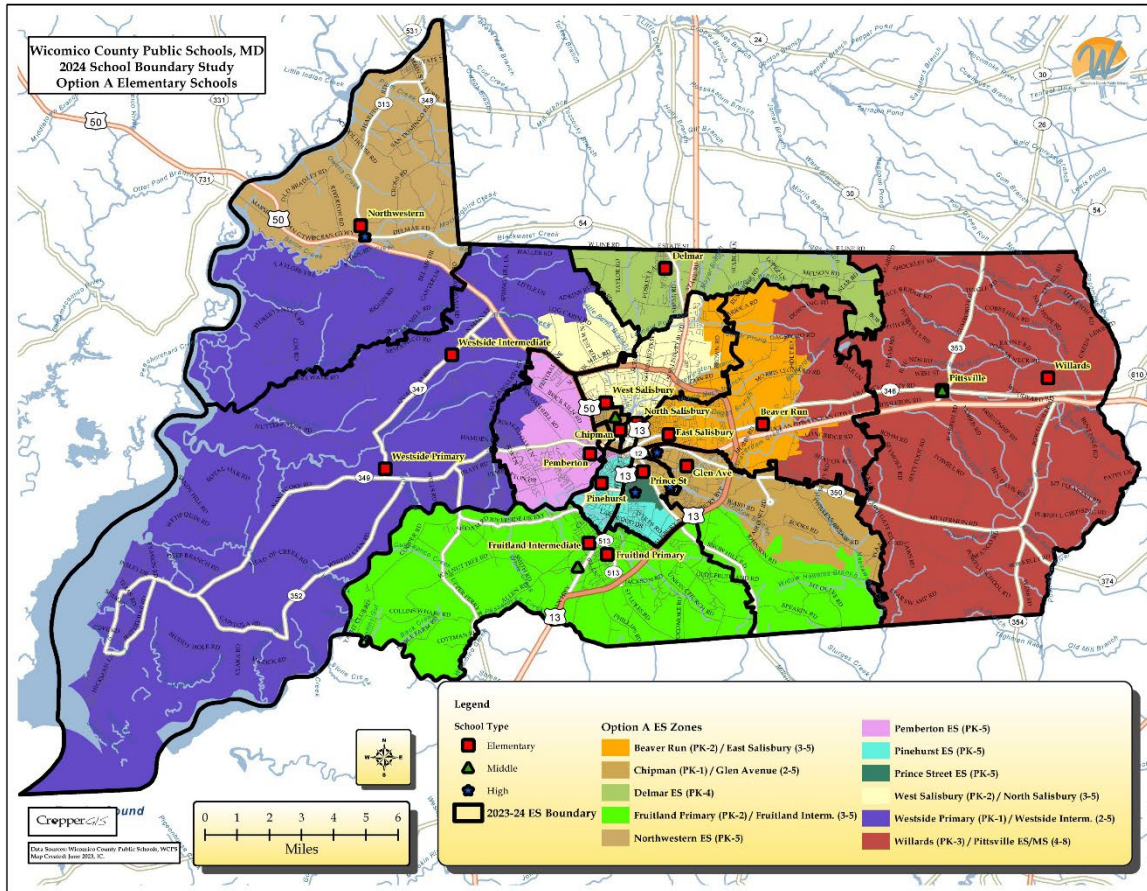
<http://www.wcpsboundarystudy.org>



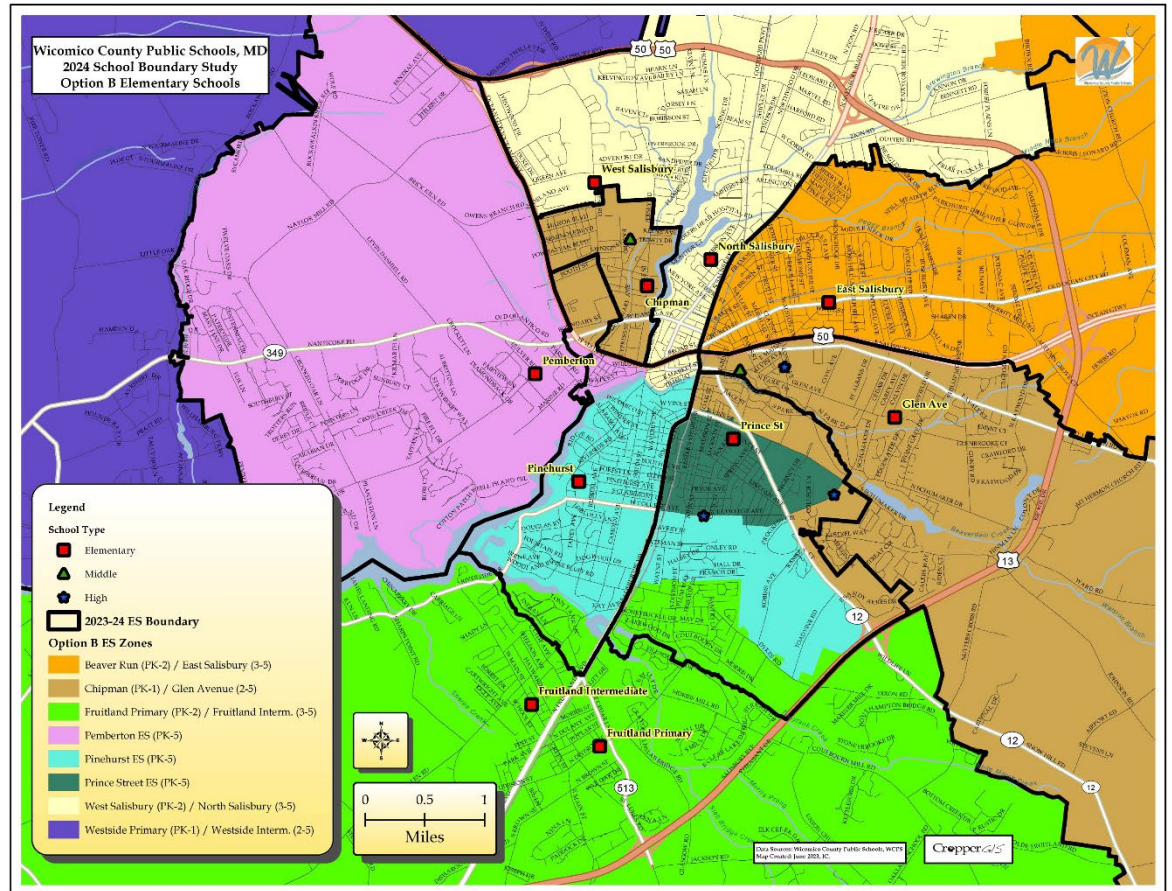
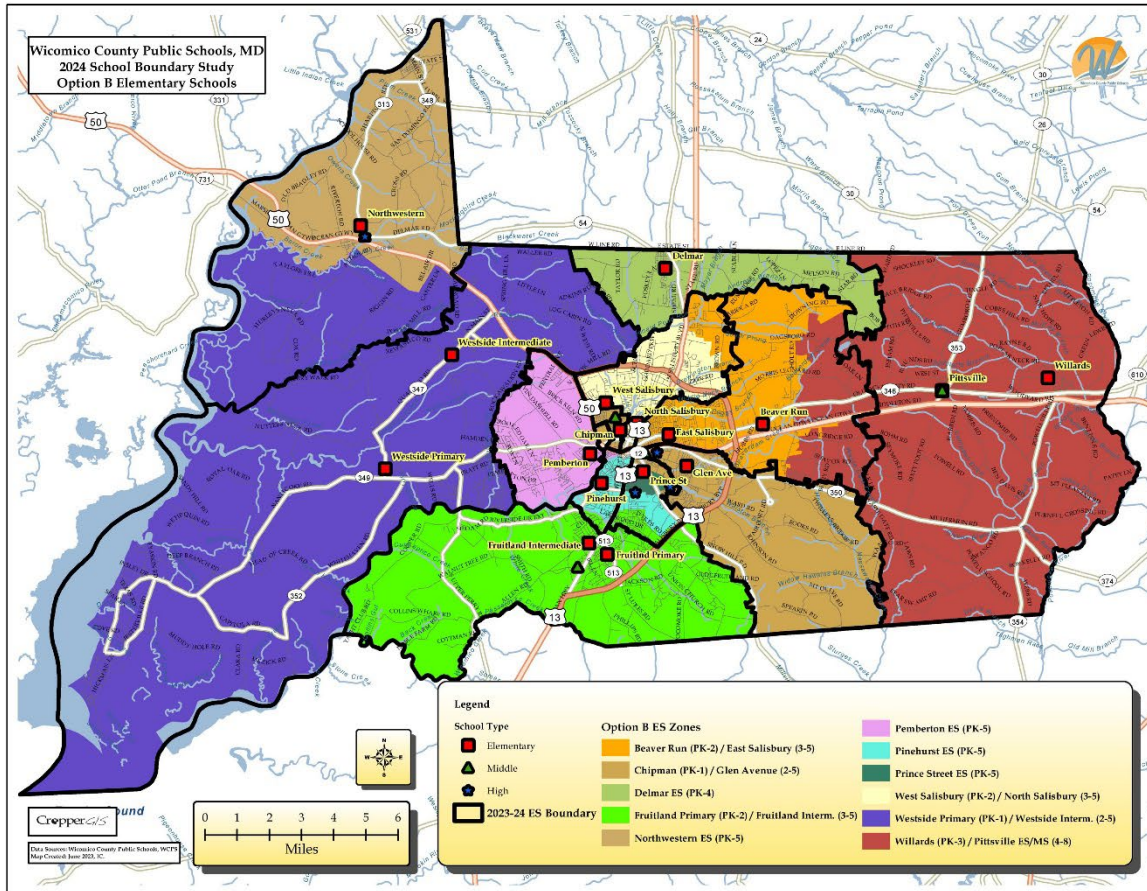
# Current Elementary School Zones



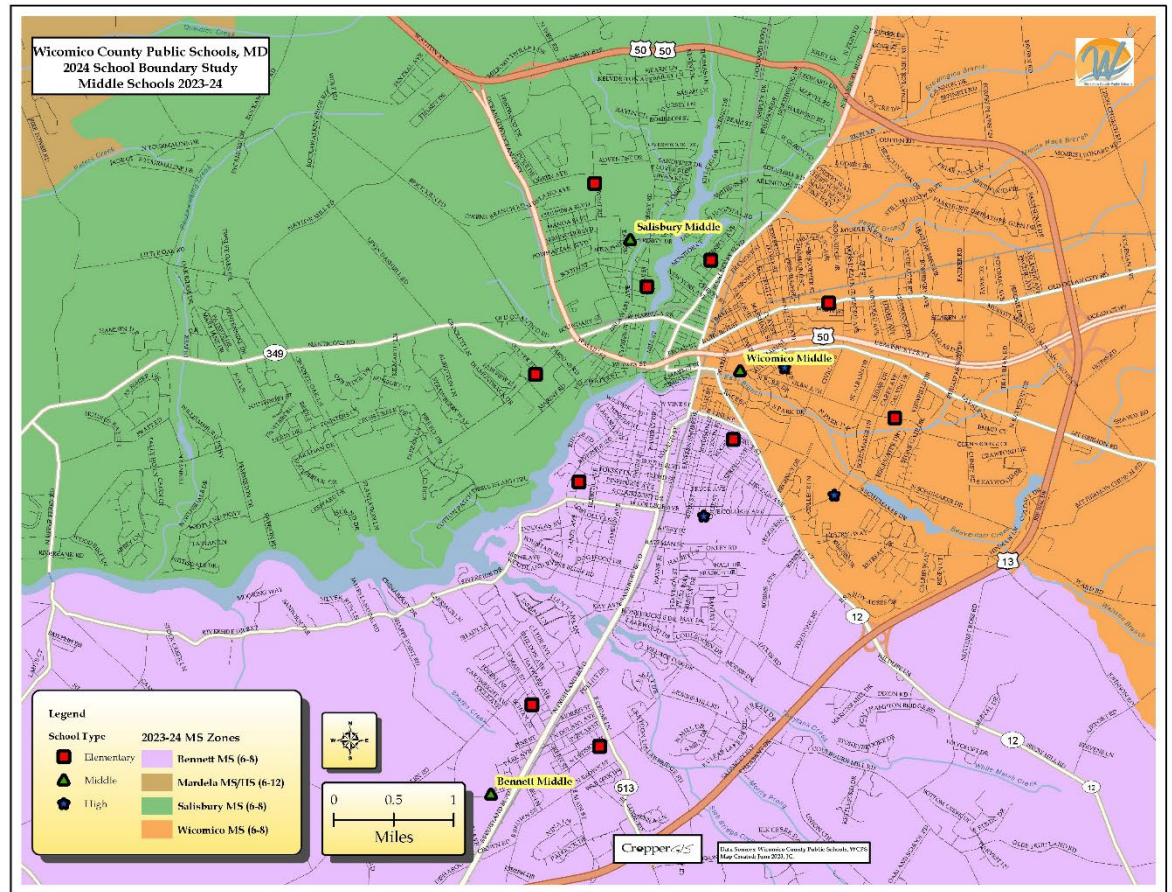
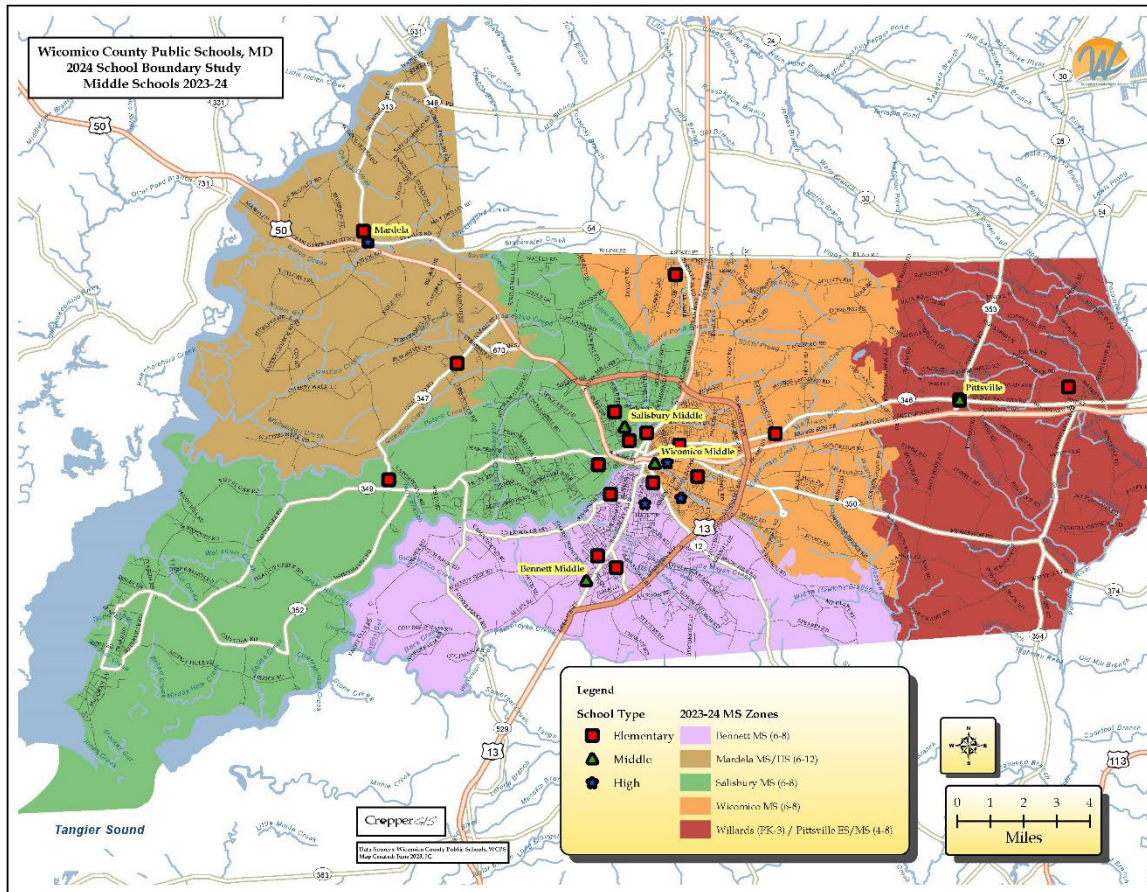
# DRAFT Elementary Option A Zones



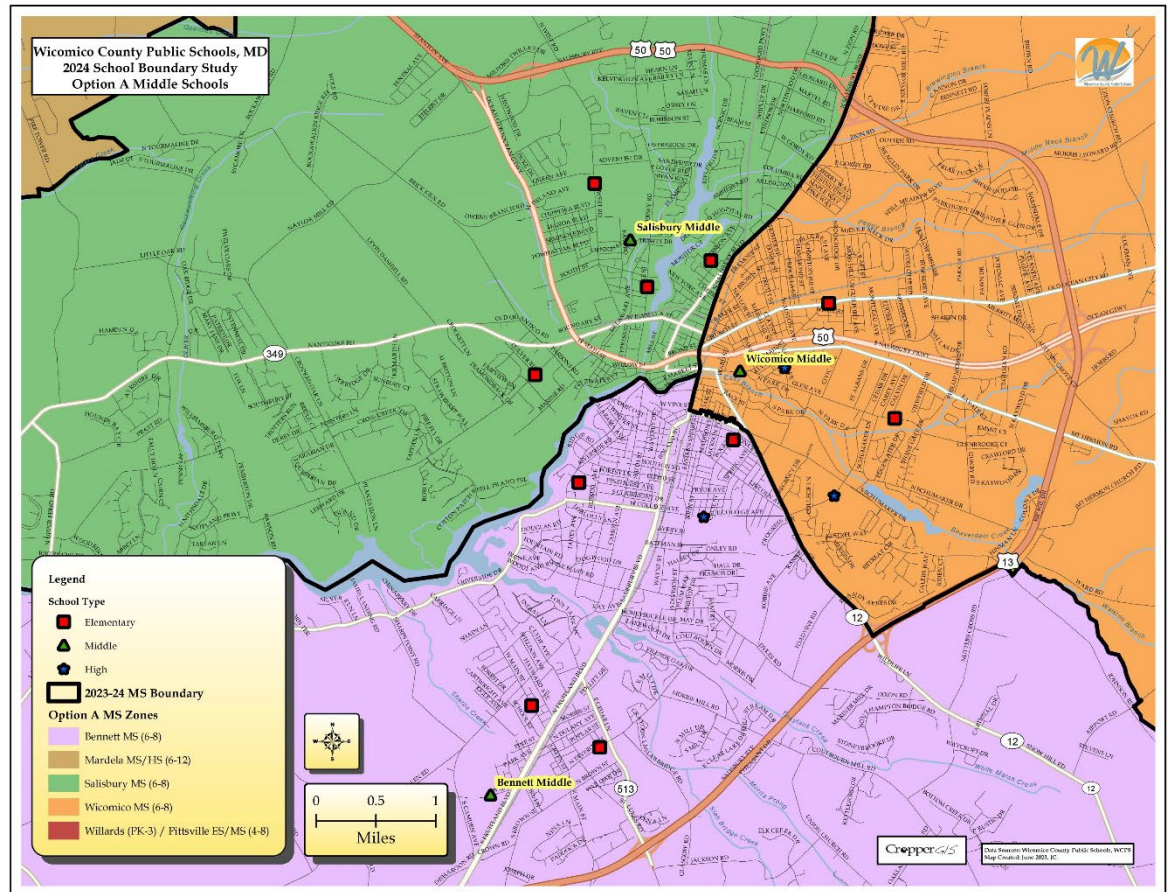
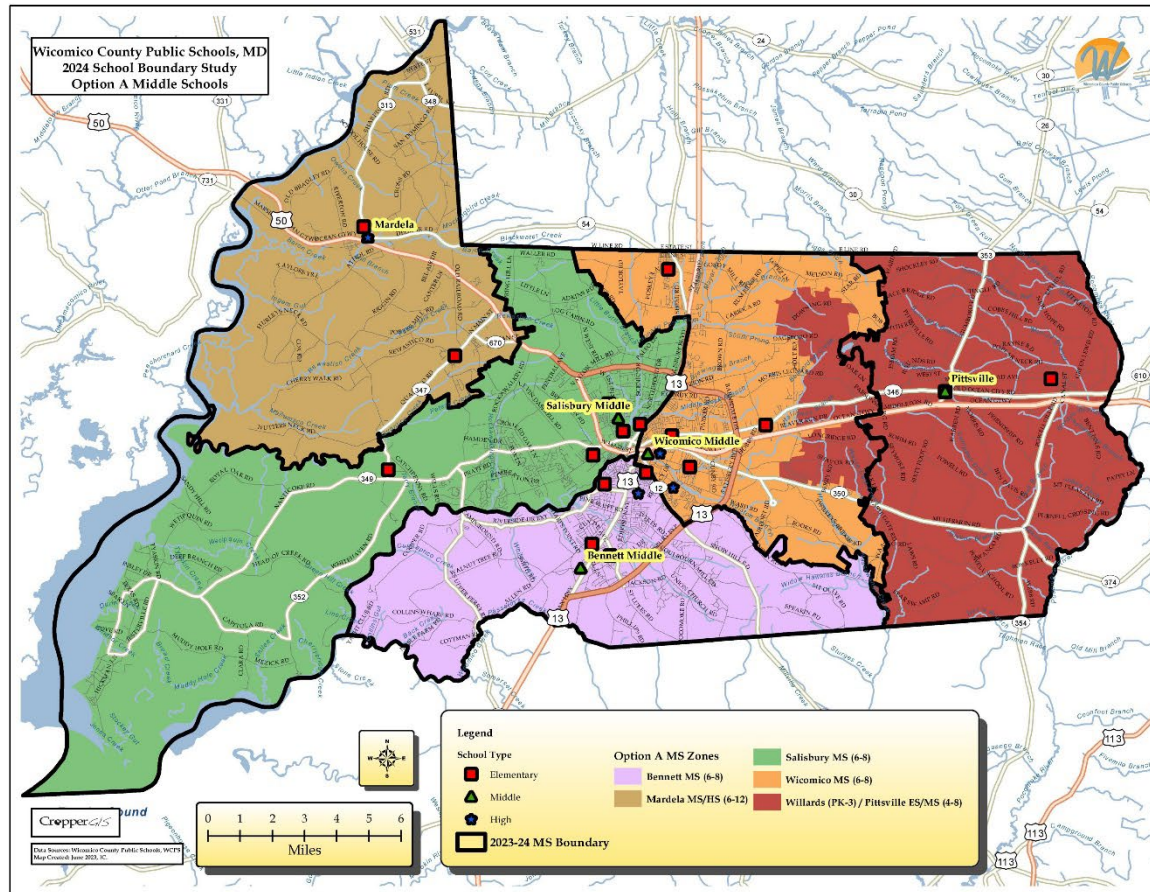
# DRAFT Elementary Option B Zones



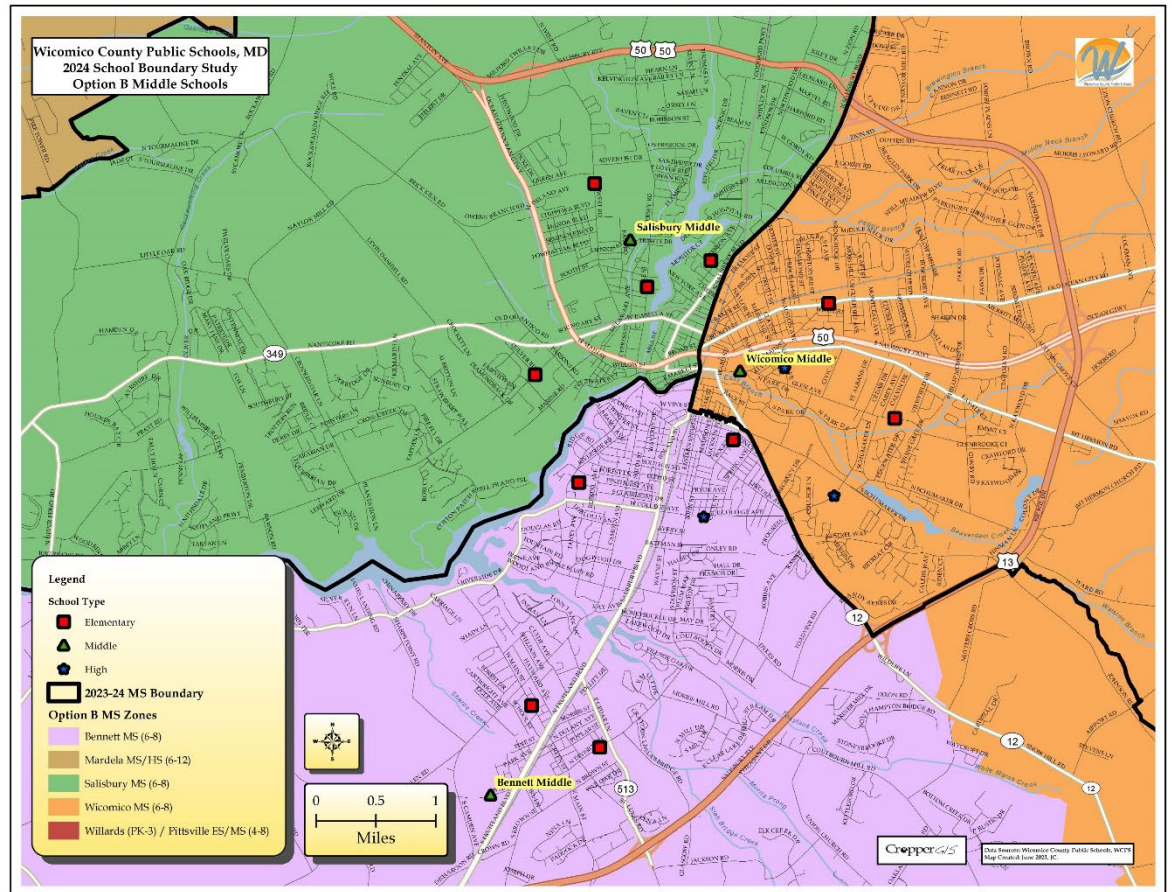
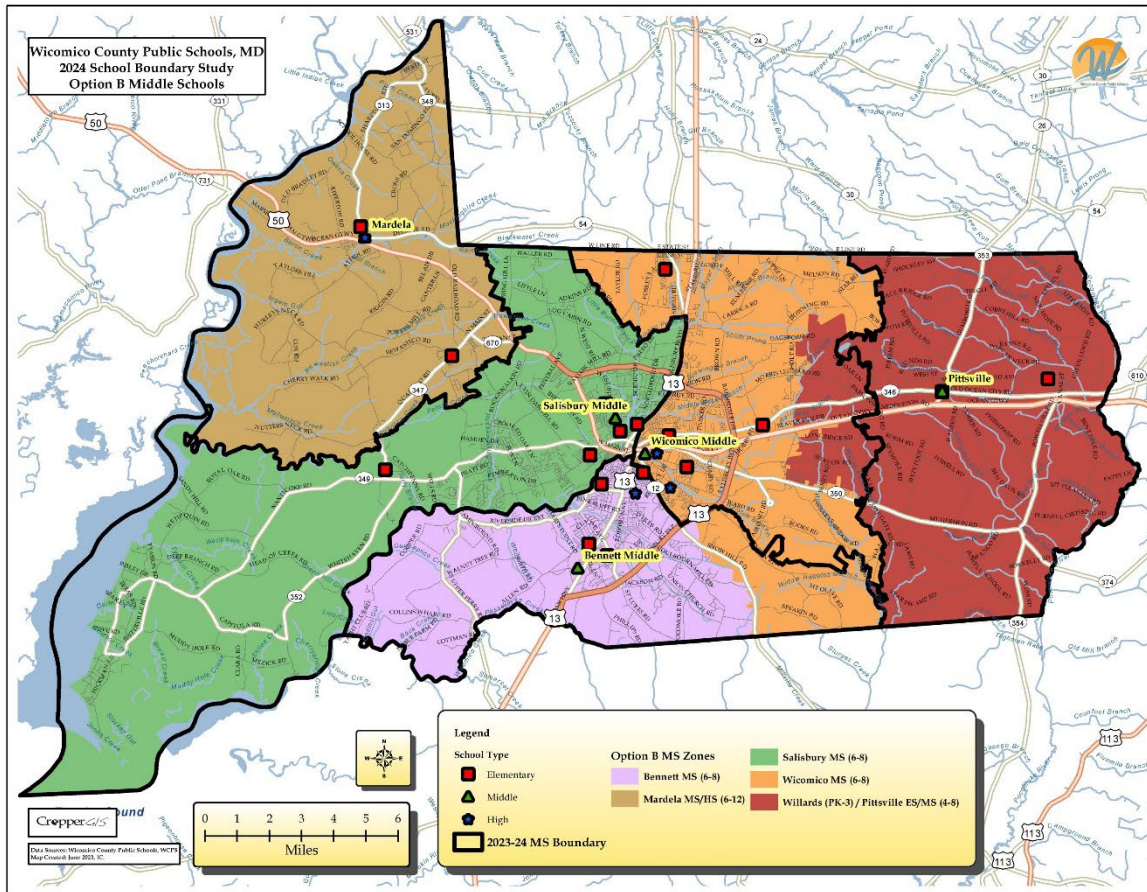
# Current Middle School Zones



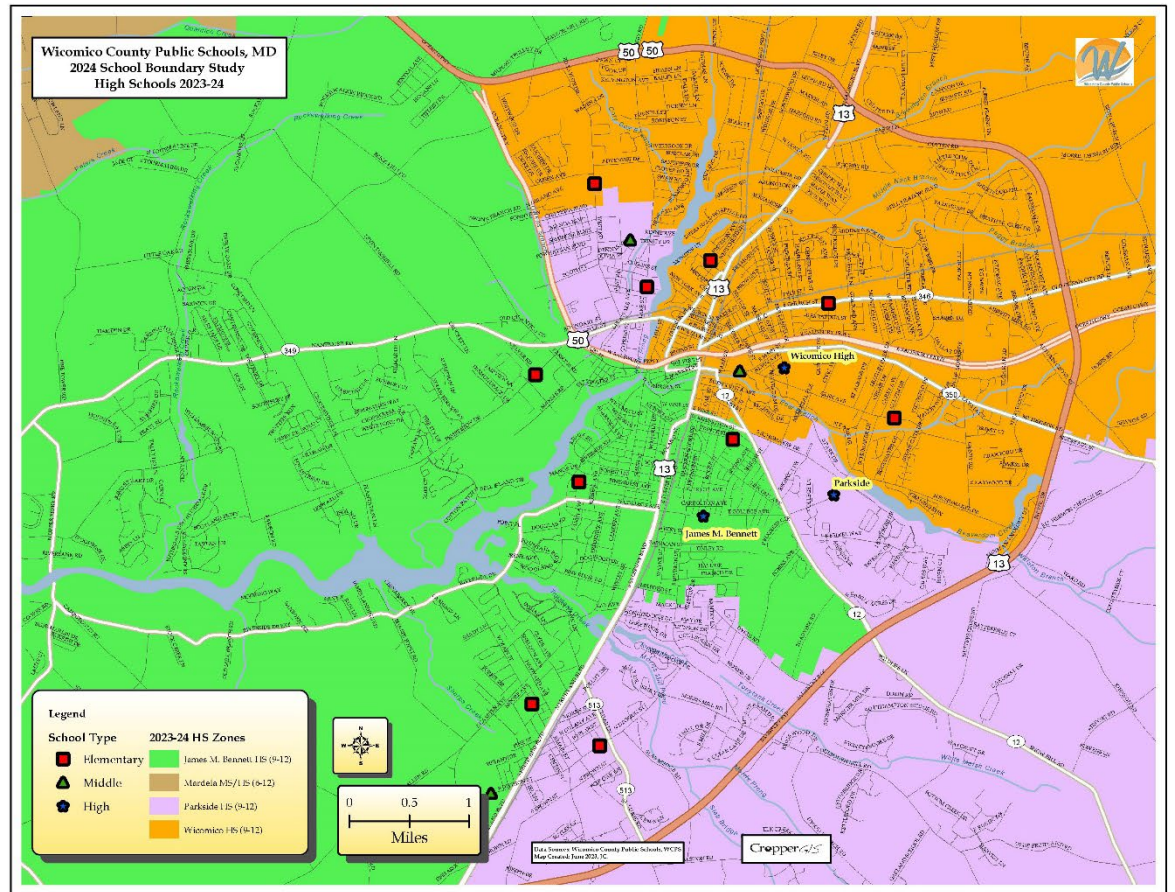
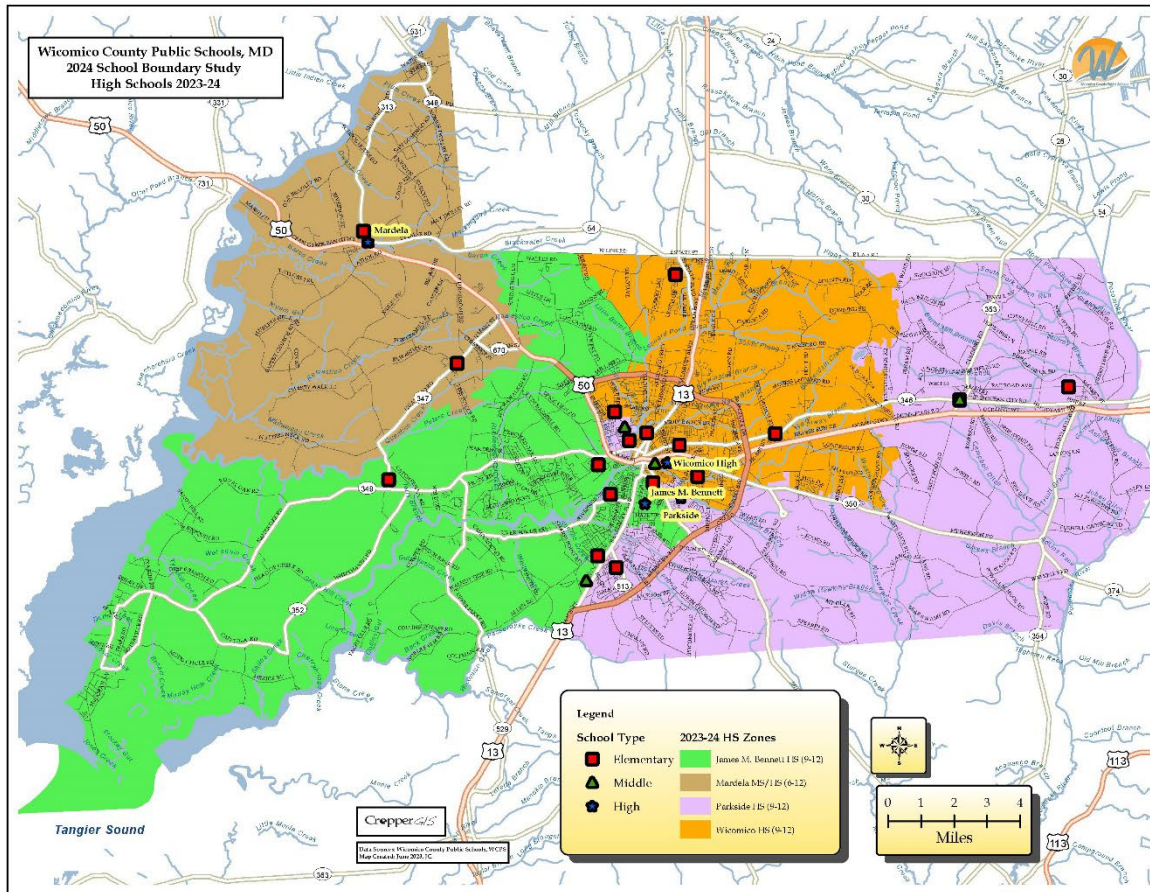
# DRAFT Middle School Option A Zones



# DRAFT Middle School Option B Zones

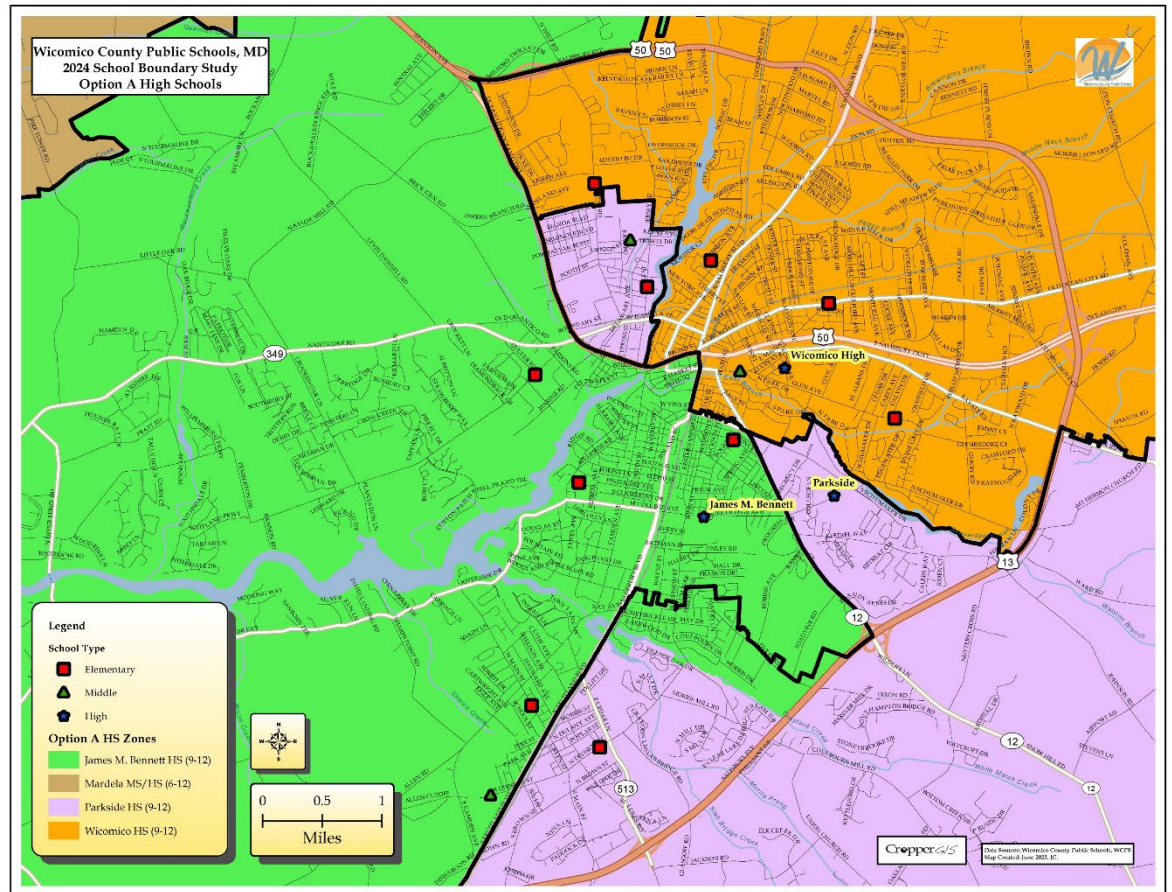
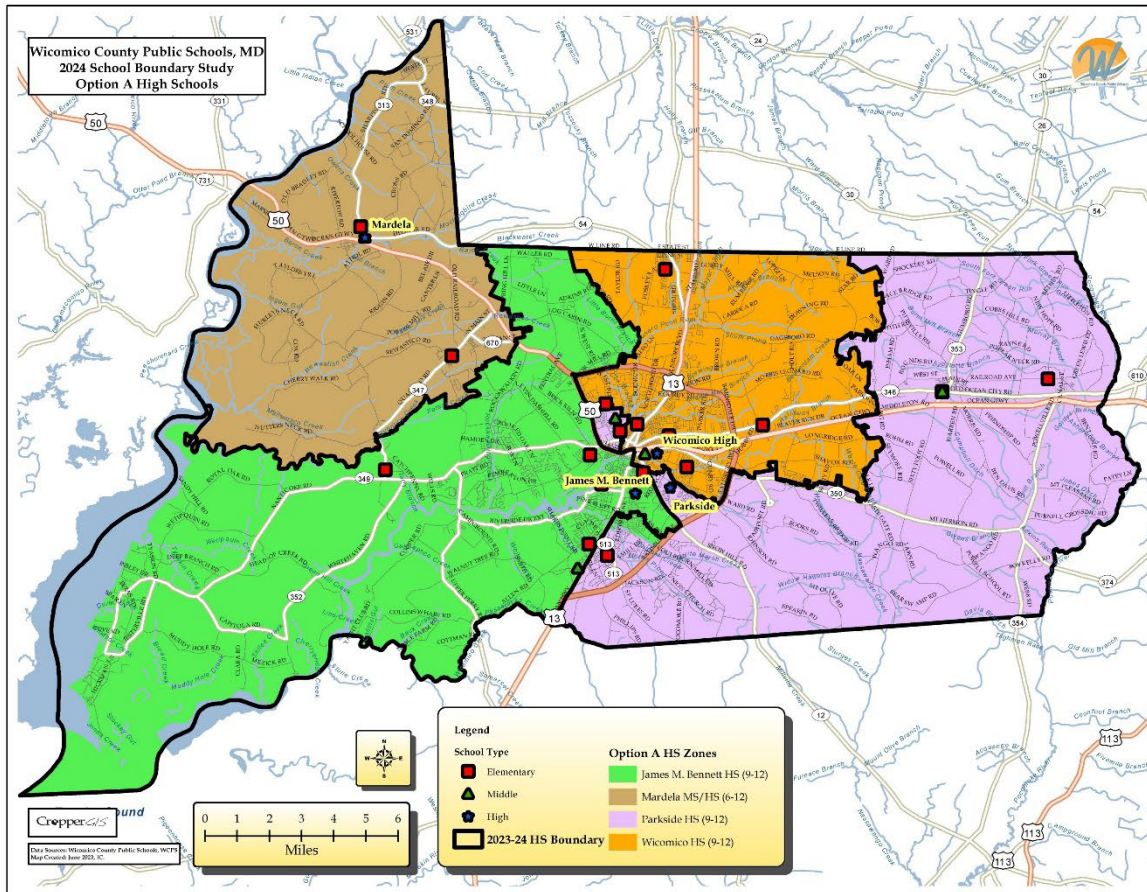


# Current High School Zones





# DRAFT High School Option A Zones



# Tonight:

- *Detailed Review of Maps*– the end of the presentation will include a gallery walk to review the DRAFT Options and related data with members of the public.
- SBPT members, WCPS Staff, and consultants will be available after the presentation to answer questions the public may have.
- Although answering any questions the night of the meeting is very important, please submit your feedback via the comment form on the School Boundary Study website and/or via the online survey for the entire SBPT's benefit

# Stay Informed – Provide Feedback

- Visit the School Boundary Study Web site at <http://www.wcpsboundarystudy.org>
- Participate in an Online Survey from Nov. 21 – Dec. 9, 2024
  - Link is located on <http://www.wcpsboundarystudy.org> or you can go directly [HERE](#) for the survey in [English](#),
  - You can also access the survey by referencing the QR code on this slide.
  - Available in [English](#), [Spanish](#) and [Haitian Creole](#)
  - Survey can be taken on any PC/Apple/mobile device with Internet access
- Although the formatted survey is preferred, you can also submit comments via the online [Wicomico County Public Schools - 2024-2025 School Boundary Study General Feedback Form](#)
- Presentation of a Recommendation to the Board of Education is scheduled on January 7, 2025.

English Survey QR Code



Spanish Survey QR Code



Haitian Creole Survey QR Code





# Thank You!



Cropper G/S