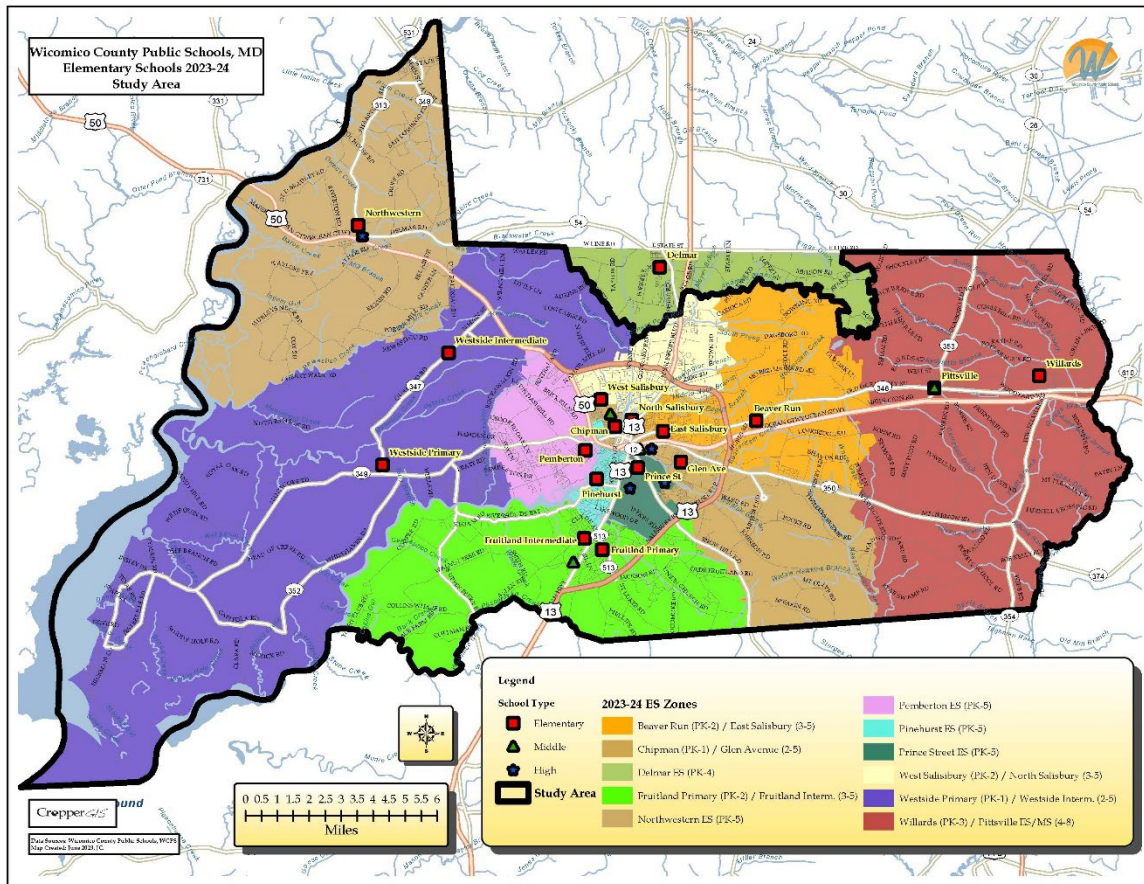




Wicomico County Public Schools 2024 School Boundary Study

Public Information Session 2 Survey Results



Online Survey Results

Introduction

The Wicomico County Public Schools school boundary planning team (SBPT) and staff hosted a public information session on November 21, 2024. Cropper GIS facilitated the meeting and shared information about the planning team goals, guidelines, and process and introduced elementary and middle school DRAFT options developed by the planning team that aligned with the factors and objectives of this this boundary study. The public then asked staff and planning team members questions about the process and the options under consideration. Schools continued outreach efforts following the public information session encouraging participation in the online survey.

Online Survey

One hundred & thirty-eight (138) respondents participated in the online survey that was available to the public from November 21, 2024, until December 9, 2024. The survey asked respondents to provide their thoughts, observations, and overall opinion on the DRAFT options that were presented at the November 21, 2024, public information session and posted on the WCPS boundary study web site. The data - aggregated, summarized and reported below - is intended to be used by the school boundary planning team as a tool to help facilitate their deliberation and decision-making regarding the boundary study process. The results of the survey alone do not constitute a decision regarding a boundary change and are not intended to be used in the decision-making process independent of other information, discussion, and deliberation.

In order to gain a better understanding of where the majority of the respondents are coming from throughout the district, the respondents were asked *“What elementary school zone do you live in for the current school year?”*

Total Respondents by Live-In Elementary Zone		
Live-In Elementary Zone	Total Respondents	Percent of Respondents
Beaver Run (PK-2) / East Salisbury (3-5)	12	9%
Chipman (PK-1) / Glen Avenue (2-5)	6	4%
Delmar Elementary (PK-4)	1	1%
Fruitland Primary (PK-2) / Fruitland Interm. (3-5)	6	4%
Northwestern ES (PK-5)	37	27%
Pemberton ES (PK-5)	8	6%
Pinehurst ES (PK-5)	5	4%
Prince Street ES (PK-5)	29	21%
West Salisbury (PK-2) / North Salisbury (3-5)	7	5%
Westside Primary (PK-1) / Westside Interm. (2-5)	17	12%
Willards (PK-3) / Pittsville ES/MS (4-8)	4	3%
Other	6	4%
Total	138	100%

Option Summary Tables for All Submitted Comments

Options Opinion Summary

When asked 'What is your opinion of an option?' 50% of respondents said they approved of or liked ES DRAFT Option B compared to only 29% who liked or approved of ES Option A. ES Option A received the highest amount of dislike or opposition from respondents at 61%. Both MS Options elicited similar results as 43% approved or liked MS Option A and 42% approved or liked MS Option B. more (33.2%) approved of the MS DRAFT Option. HS Option A elicited a 47% approve of or liked response alongside 34% of respondents being neutral.

Options Opinion Summary										
Option Opinion	ES DRAFT Option A		ES DRAFT Option B		MS DRAFT Option A		MS DRAFT Option B		HS DRAFT Option A	
	n	%	n	%	n	%	n	%	n	%
Approve	31	23%	55	40%	37	35%	33	34%	38	39%
Like	8	6%	13	10%	8	8%	8	8%	8	8%
Neutral	14	10%	13	10%	38	36%	36	37%	33	34%
Dislike	22	16%	13	10%	6	6%	5	5%	7	7%
Oppose	60	44%	42	31%	16	15%	16	16%	12	12%
Total	135	100%	136	100%	105	100%	98	100%	98	100%

Option Weaknesses Summary Table

The table below shows what respondents considered to be the primary weakness in options they opposed.

Options Primary Weaknesses										
Primary Weaknesses	ES DRAFT Option A		ES DRAFT Option B		MS DRAFT Option A		MS DRAFT Option B		HS DRAFT Option A	
	n	%	n	%	n	%	n	%	n	%
	Demographic Impacts	12	10%	11	9%	7	8%	5	6%	5
Feeder Pattern Efficiency	10	8%	7	6%	10	11%	7	8%	8	9%
Neighborhood Continuity	15	13%	20	16%	7	8%	4	4%	7	8%
Transportation Efficiency	28	24%	22	18%	7	8%	13	14%	19	21%
Utilization	18	15%	15	12%	8	9%	8	9%	6	7%
None	36	30%	49	40%	54	58%	53	59%	44	49%
Total	119	100%	124	100%	93	100%	90	100%	89	100%

Option Strengths Summary Table

The table below shows what respondents considered to be primary strength in options they approved of.

Options Primary Strengths										
Primary Strengths	ES DRAFT Option A		ES DRAFT Option B		MS DRAFT Option A		MS DRAFT Option B		HS DRAFT Option A	
	n	%	n	%	n	%	n	%	n	%
	Demographic Impacts	6	5%	10	8%	2	2%	4	5%	2
Feeder Pattern Efficiency	8	7%	7	5%	5	5%	5	6%	4	5%
Neighborhood Continuity	20	17%	17	13%	13	14%	8	9%	9	10%
Transportation Efficiency	9	7%	9	7%	17	18%	9	10%	15	17%
Utilization	20	17%	40	31%	15	16%	19	22%	20	23%
None	58	48%	46	36%	42	45%	42	48%	38	43%
Total	121	100%	129	100%	94	100%	87	100%	88	100%

Options Opinion Summary by Respondents Live-In Elementary Zone

The tables below show the options opinion summaries broken out by the Live-In zones of the survey respondents.

ES DRAFT Option A Opinion Summary by Respondent Live-In Elementary Zone									
Live-In Zone	Approve	Like	Neutral	Dislike	Oppose	Total	Percent Approve or Like	Percent Oppose or Dislike	Percent Neutral
Beaver Run (PK-2) / East Salisbury (3-5)	8	1		3		12	75%	25%	0%
Chipman (PK-1) / Glen Avenue (2-5)	3	1		1	1	6	67%	33%	0%
Delmar Elementary (PK-4)				1		1	0%	100%	0%
Fruitland Primary (PK-2) / Fruitland Interm. (3-5)	1	2	1		1	5	60%	20%	20%
Northwestern ES (PK-5)	2		1	1	33	37	5%	92%	3%
Pemberton ES (PK-5)	5				3	8	63%	38%	0%
Pinehurst ES (PK-5)	1	1	1		2	5	40%	40%	20%
Prince Street ES (PK-5)	2	1	7	9	9	28	11%	64%	25%
West Salisbury (PK-2) / North Salisbury (3-5)	2	2	1	1		6	67%	17%	17%
Westside Primary (PK-1) / Westside Interm. (2-5)	3		3	3	8	17	18%	65%	18%
Willards (PK-3) / Pittsville ES/MS (4-8)	3				1	4	75%	25%	0%
Other	1			3	2	6	17%	83%	0%
Total	31	8	14	22	60	135	29%	61%	10%

ES DRAFT Option B Opinion Summary by Respondent Live-In Elementary Zone									
Live-In Zone	Approve	Like	Neutral	Dislike	Oppose	Total	Percent Approve or Like	Percent Oppose or Dislike	Percent Neutral
Beaver Run (PK-2) / East Salisbury (3-5)	5		2	3	2	12	42%	42%	17%
Chipman (PK-1) / Glen Avenue (2-5)	3			3		6	50%	50%	0%
Delmar Elementary (PK-4)	1					1	100%	0%	0%
Fruitland Primary (PK-2) / Fruitland Interm. (3-5)	3	2			1	6	83%	17%	0%
Northwestern ES (PK-5)	5	3		1	27	36	22%	78%	0%
Pemberton ES (PK-5)	3			1	4	8	38%	63%	0%
Pinehurst ES (PK-5)		2	1	1	1	5	40%	40%	20%
Prince Street ES (PK-5)	23	2	4			29	86%	0%	14%
West Salisbury (PK-2) / North Salisbury (3-5)	1	2	2	2		7	43%	29%	29%
Westside Primary (PK-1) / Westside Interm. (2-5)	7	1	3	2	4	17	47%	35%	18%
Willards (PK-3) / Pittsville ES/MS (4-8)		1			3	4	25%	75%	0%
Other	4		1			5	80%	0%	20%
Total	55	13	13	13	42	136	50%	40%	10%

Wicomico County Public Schools, MD
 2024 School Boundary Study: Public Information Session 2 Survey Results

MS DRAFT Option A Opinion Summary by Respondent Live-In Elementary Zone									
Live-In Zone	Approve	Like	Neutral	Dislike	Oppose	Total	Percent Approve or Like	Percent Oppose or Dislike	Percent Neutral
Beaver Run (PK-2) / East Salisbury (3-5)	6		2	2		10	60%	20%	20%
Chipman (PK-1) / Glen Avenue (2-5)	3		1	1		5	60%	20%	20%
Fruitland Primary (PK-2) / Fruitland Interm. (3-5)	2	2	2			6	67%	0%	33%
Northwestern ES (PK-5)	14	2	6	1	10	33	48%	33%	18%
Pemberton ES (PK-5)	1		4		1	6	17%	17%	67%
Pinehurst ES (PK-5)		2	1	1		4	50%	25%	25%
Prince Street ES (PK-5)	4	1	11	1		17	29%	6%	65%
West Salisbury (PK-2) / North Salisbury (3-5)	1	1	2			4	50%	0%	50%
Westside Primary (PK-1) / Westside Interm. (2-5)	4		6		4	14	29%	29%	43%
Willards (PK-3) / Pittsville ES/MS (4-8)	2		1		1	4	50%	25%	25%
Other			2			2	0%	0%	100%
Total	37	8	38	6	16	105	43%	21%	36%

MS DRAFT Option B Opinion Summary by Respondent Live-In Elementary Zone									
Live-In Zone	Approve	Like	Neutral	Dislike	Oppose	Total	Percent Approve or Like	Percent Oppose or Dislike	Percent Neutral
Beaver Run (PK-2) / East Salisbury (3-5)	3		3	2	2	10	30%	40%	30%
Chipman (PK-1) / Glen Avenue (2-5)		1	1	1	2	5	20%	60%	20%
Fruitland Primary (PK-2) / Fruitland Interm. (3-5)	2	1	2		1	6	50%	17%	33%
Northwestern ES (PK-5)	13	1	6	1	7	28	50%	29%	21%
Pemberton ES (PK-5)	2		3		1	6	33%	17%	50%
Pinehurst ES (PK-5)		2	1			3	67%	0%	33%
Prince Street ES (PK-5)	5	2	9			16	44%	0%	56%
West Salisbury (PK-2) / North Salisbury (3-5)		1	2			3	33%	0%	67%
Westside Primary (PK-1) / Westside Interm. (2-5)	5		6	1	2	14	36%	21%	43%
Willards (PK-3) / Pittsville ES/MS (4-8)	1		2		1	4	25%	25%	50%
Other	2		1			3	67%	0%	33%
Total	33	8	36	5	16	98	42%	21%	37%

Wicomico County Public Schools, MD
 2024 School Boundary Study: Public Information Session 2 Survey Results

HS DRAFT Option A Opinion Summary by Respondent Live-In Elementary Zone									
Live-In Zone	Approve	Like	Neutral	Dislike	Oppose	Total	Percent Approve or Like	Percent Oppose or Dislike	Percent Neutral
Beaver Run (PK-2) / East Salisbury (3-5)	5		2	2		9	56%	22%	22%
Chipman (PK-1) / Glen Avenue (2-5)	3		2			5	60%	0%	40%
Fruitland Primary (PK-2) / Fruitland Intern. (3-5)	2	1	3			6	50%	0%	50%
Northwestern ES (PK-5)	14	1	6	2	6	29	52%	28%	21%
Pemberton ES (PK-5)	3		3			6	50%	0%	50%
Pinehurst ES (PK-5)		1	2			3	33%	0%	67%
Prince Street ES (PK-5)	5	3	6	1	1	16	50%	13%	38%
West Salisbury (PK-2) / North Salisbury (3-5)	1	1	2			4	50%	0%	50%
Westside Primary (PK-1) / Westside Intern. (2-5)	3	1	4	2	4	14	29%	43%	29%
Willards (PK-3) / Pittsville ES/MS (4-8)	2		1			3	67%	0%	33%
Other			2		1	3	0%	33%	67%
Total	38	8	33	7	12	98	47%	19%	34%

Option Viability

The following table shows answers to the question *“Do you think that this option is a viable option?”*

Comment Summary		
Total Responses to "Do you think the ES DRAFT Option A is viable?"		
Yes	45	34%
No	69	53%
Maybe	17	13%
Total	131	100%

Comment Summary		
Total Responses to "Do you think the MS DRAFT Option A is viable?"		
Yes	51	50%
No	22	22%
Maybe	29	28%
Total	102	100%

Comment Summary		
Total Responses to "Do you think the HS DRAFT Option A is viable?"		
Yes	49	51%
No	20	21%
Maybe	28	29%
Total	97	100%

Comment Summary		
Total Responses to "Do you think the ES DRAFT Option B is viable?"		
Yes	59	45%
No	55	42%
Maybe	16	12%
Total	130	100%

Comment Summary		
Total Responses to "Do you think the MS DRAFT Option B is viable?"		
Yes	41	42%
No	23	23%
Maybe	34	35%
Total	98	100%

Conclusion

To summarize, the data presented in this summary report will be utilized as a tool to help the school boundary planning team prioritize the options. However, the results of the public information session should not be the only deciding factor when reviewing the options due to the uneven distribution of respondents.