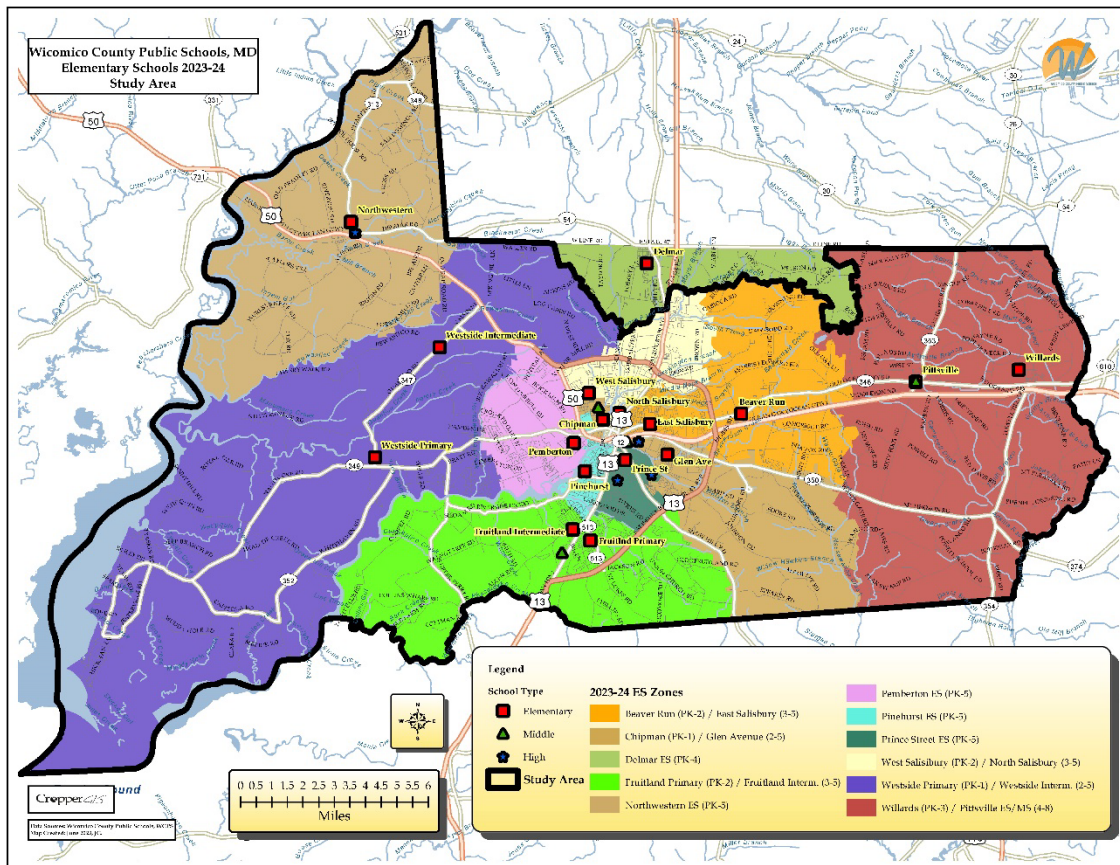


2024 School Boundary Study

School Boundary Planning Team

Option Recommendation & Statistics





2023-24 Capacity, 9/30/24 Preliminary Student Enrollment, and Building Utilizations

The following tables present DRAFT options for the School Boundary Planning Team’s (SBPT) review. Keep in mind that these options are only starting points for discussion. Any of the following options can be changed based on feedback from the SBPT, public, and WCPS administration. This information will help inform all stakeholders on how schools could be potentially impacted as a result of potential boundary adjustments. The current student enrollment numbers were derived from the district’s 2024-25 Student Database dated September 30, 2024.

Glossary of Terms

Capacity –the number of students that an individual school has the physical capacity to enroll and can be reasonably accommodated in a facility.

Utilization - Utilization is the total enrollment divided by the capacity, described as a percentage.

Utilization Color Key
Within 10% of Study Area Average
10-15% from Study Area Average
15% or more higher than the Study Area Average
15% or more below the Study Area Average

Live and Attend In students – Students residing inside of a school attendance boundary and attending the home zoned school.

Live Out Attend In students – Students that live outside of their attending school’s attendance boundary.

Unmatched students – Students whose address could not be located in our GIS software.

Feeder Pattern – The number of students living within the attendance boundary of both a lower grade cohort (ex. Elementary schools) and a higher-grade cohort (i.e., Middle School). This is given as both the number of Live-In students and described as a percentage.



Enrollment and Utilization Tables

The following tables show current utilization by percentage based on current enrollment as of 9/30/2024 and 2023-24 building capacity

School	Grade Config	2023 State Rated Capacity (SRC)	PK3	PK4	KG	01	02	03	04	05	06	07	08	09	10	11	12	(09/30/2024) Total Headcount PS/PK-12 Grade Enrollment	(09/30/2024) Total PS/PK-12 Enrollment Utilization ¹			PK-12 Live and Attend In	PK-12 Live Out Attend In	
																			+/-	%	Projection			
Beaver Run ES	PK-2	664	0	120	230	196	197	0	0	0	0	0	0	0	0	0	0	0	743	79	111.9%	▲	729	14
East Salisbury ES	3-5	424	0	0	0	0	0	156	168	162	0	0	0	0	0	0	0	0	486	62	114.6%	▲	463	23
Charles H. Chipman ES	PK-1	384	15	66	110	112	0	0	0	0	0	0	0	0	0	0	0	0	303	-81	78.9%	▲	281	22
Glen Avenue ES	2-5	470	0	0	0	0	103	90	89	105	0	0	0	0	0	0	0	0	387	-83	82.3%	▲	374	13
Fruitland Primary School	PK-2	474	0	82	102	134	127	0	0	0	0	0	0	0	0	0	0	0	445	-29	93.9%	▲	416	29
Fruitland Intermediate School	3-5	378	0	0	0	0	0	110	110	123	0	0	0	0	0	0	0	0	343	-35	90.7%	▲	310	33
Northwestern ES	PK-5	251	0	31	51	54	49	50	58	47	0	0	0	0	0	0	0	0	340	89	135.5%	▲	312	28
Pemberton ES	PK-5	523	15	58	63	81	80	66	76	67	0	0	0	0	0	0	0	0	506	-17	96.7%	▲	443	63
Pinehurst ES	PK-5	467	0	60	97	78	84	89	79	77	0	0	0	0	0	0	0	0	564	97	120.8%	▲	511	53
Prince Street ES	PK-5	616	0	95	167	146	142	160	137	130	0	0	0	0	0	0	0	0	977	361	158.6%	▲	926	51
West Salisbury ES	PK-2	352	0	79	113	123	94	0	0	0	0	0	0	0	0	0	0	0	409	57	116.2%	▲	394	15
North Salisbury ES	3-5	506	0	0	0	0	0	187	166	173	0	0	0	0	0	0	0	0	526	20	104.0%	▼	292	234
Westside Primary School	PK-1	199	0	40	84	77	0	0	0	0	0	0	0	0	0	0	0	0	201	2	101.0%	▲	182	19
Westside Intermediate School	2-5	414	0	0	0	0	73	83	77	107	0	0	0	0	0	0	0	0	340	-74	82.1%	▼	311	29
Willards ES	PK-3	362	0	36	64	72	72	66	0	0	0	0	0	0	0	0	0	0	310	-52	85.6%	▲	277	33
Pittsville ES/MS	4-8	505	0	0	0	0	0	0	71	62	67	68	57	0	0	0	0	0	325	-180	64.4%	▲	285	40
Total Study Area ES		6,989	30	667	1,081	1,073	1,021	1,057	1,031	1,053	67	68	57	0	0	0	0	0	7,205	216	103.1%	▲	6,506	699
Bennett MS	6-8	1114	0	0	0	0	0	0	0	0	0	329	319	315	0	0	0	0	963	-151	86.4%	▲	911	52
Salisbury MS	6-8	999	0	0	0	0	0	0	0	0	0	279	273	295	0	0	0	0	847	-152	84.8%	▼	744	103
Wicomico MS	6-8	914	0	0	0	0	0	0	0	0	0	278	269	281	0	0	0	0	828	-86	90.6%	▲	799	29
Total MS		3,027	0	0	0	0	0	0	0	0	0	886	861	891	0	0	0	0	2,638	-389	87.1%	▲	2,454	184
Mardela MS/HS	6-12	616	0	0	0	0	0	0	0	0	0	89	114	98	141	100	115	84	741	125	120.3%	▲	652	89
James M. Bennett HS	9-12	1496	0	0	0	0	0	0	0	0	0	0	0	0	418	404	352	303	1477	-19	98.7%	▼	1383	94
Parkside HS	9-12	944	0	0	0	0	0	0	0	0	0	0	0	0	319	331	327	296	1273	329	134.9%	▼	1154	119
Wicomico HS	9-12	1215	0	0	0	0	0	0	0	0	0	0	0	0	373	346	323	262	1304	89	107.3%	▲	1249	55
Total HS		4,271	0	0	0	0	0	0	0	0	0	89	114	98	1,251	1,181	1,117	945	4,795	524	112.3%	▼	4,438	357

Counts based on Preliminary September 30, 2024 Enrollment



SBPT Option Recommendation Enrollment and Utilization Estimates

The following table reflects the SBPT option recommendation enrollment estimates, over/under capacity estimates, and building utilization estimates. ¹The estimated enrollment is calculated by adding the total PK4-12th grade students served that “Live and Attend In” a school zone within each new DRAFT Option, plus the total PK3 students that attended each school during the 2024-25 school year, plus the total students that were "Live Out Attend In" for the 2024-25 school year. The utilizations are calculated by dividing the estimated enrollment counts by the option capacity, described as a percentage to show how “full” a school is. The over/under counts reflect how many available seats each school has for that option. Negative numbers reflect available seats, and positive numbers are the total number over capacity.

School	Grade Config	2023 State Rated Capacity (SRC)	Option Capacity (SRC)	(09/30/2024) Total Headcount PS/PK-12 Grade Enrollment	(09/30/2024) Total PS/PK-12 Enrollment Utilization ¹		Option Rec. Estimated Enrollment ¹ (Total Headcount)	Option Rec. Estimated Utilization	
					+ / -	%		+ / -	%
Beaver Run ES	PK-2	664	664	743	79	111.9%	715	51	107.7%
East Salisbury ES	3-5	424	424	486	62	114.6%	480	56	113.2%
Charles H. Chipman ES	PK-1	384	384	303	-81	78.9%	372	-12	96.9%
Glen Avenue ES	2-5	470	470	387	-83	82.3%	477	7	101.5%
Fruitland Primary School	PK-2	474	474	445	-29	93.9%	509	35	107.4%
Fruitland Intermediate School	3-5	378	378	343	-35	90.7%	403	25	106.6%
Northwestern ES	PK-5	251	251	340	89	135.5%	262	11	104.4%
Pemberton ES	PK-5	523	523	506	-17	96.7%	577	54	110.3%
Pinehurst ES	PK-5	467	467	564	97	120.8%	527	60	112.8%
Prince Street ES	PK-5	616	616	977	361	158.6%	653	37	106.0%
West Salisbury ES	PK-2	352	352	409	57	116.2%	391	39	111.1%
North Salisbury ES	3-5	506	506	526	20	104.0%	511	5	101.0%
Westside Primary School	PK-1	199	199	201	2	101.0%	231	32	116.1%
Westside Intermediate School	2-5	414	414	340	-74	82.1%	388	-26	93.7%
Willards ES	PK-3	362	362	310	-52	85.6%	370	8	102.2%
Pittsville ES/MS	4-8	505	505	325	-180	64.4%	363	-142	71.9%
Total Study Area ES		6,989	6,989	7,205	216	103.1%	7,229	240	103.4%
Bennett MS	6-8	1114	1114	963	-151	86.4%	950	-164	85.3%
Salisbury MS	6-8	999	999	847	-152	84.8%	847	-152	84.8%
Wicomico MS	6-8	914	914	828	-86	90.6%	817	-97	89.4%
Total MS		3,027	3,027	2,638	-389	87.1%	2,614	-413	86.4%
Mardela MS/HS	6-12	616	850	741	125	120.3%	741	-109	87.2%
James M. Bennett HS	9-12	1496	1496	1477	-19	98.7%	1477	-19	98.7%
Parkside HS	9-12	944	944	1273	329	134.9%	1273	329	134.9%
Wicomico HS	9-12	1215	1215	1304	89	107.3%	1304	89	107.3%
Total HS		4,271	4,505	4,795	524	112.3%	4,795	290	106.4%



SBPT Option Recommendation Student Demographics

School	9-30-24 Race/Ethnicity Enrollment Percentage PK-12th						9-30-24 FARMS Enrolled Percentage PK-12th	
	Black	White	Hispanic or Latino	Two Or more Races/Ethnicities	Asian	Other	Yes	No
Beaver Run ES	52%	20%	17%	9%	1%	1%	76%	24%
East Salisbury ES	53%	16%	21%	9%	1%	0%	80%	20%
Charles H. Chipman ES	68%	13%	11%	8%	0%	1%	74%	26%
Glen Avenue ES	66%	13%	11%	8%	1%	1%	86%	14%
Fruitland Primary School	29%	40%	15%	11%	4%	0%	60%	40%
Fruitland Intermediate School	26%	47%	13%	10%	3%	1%	59%	41%
Northwestern ES	10%	79%	4%	6%	1%	0%	51%	49%
Pemberton ES	57%	25%	7%	8%	3%	1%	67%	33%
Pinehurst ES	58%	19%	15%	5%	2%	1%	72%	28%
Prince Street ES	54%	9%	27%	7%	2%	1%	78%	22%
West Salisbury ES	54%	11%	23%	7%	2%	3%	74%	26%
North Salisbury ES	38%	33%	15%	9%	5%	1%	55%	45%
Westside Primary School	13%	61%	12%	11%	2%	0%	62%	38%
Westside Intermediate School	12%	62%	14%	11%	1%	1%	54%	46%
Willards ES	4%	80%	7%	9%	0%	0%	58%	42%
Pittsville ES/MS	2%	76%	11%	8%	2%	0%	63%	37%
Total Study Area ES	42%	32%	16%	8%	2%	1%	69%	31%
Bennett MS	36%	32%	18%	8%	4%	1%	64%	36%
Salisbury MS	52%	23%	11%	8%	5%	1%	67%	33%
Wicomico MS	50%	18%	21%	8%	3%	1%	74%	26%
Total MS	46%	25%	17%	8%	4%	1%	68%	32%
Mardela MS/HS	11%	74%	6%	8%	1%	0%	49%	51%
James M. Bennett HS	37%	35%	16%	7%	4%	1%	59%	41%
Parkside HS	33%	45%	12%	6%	3%	1%	58%	42%
Wicomico HS	50%	18%	20%	9%	3%	1%	74%	26%
Total HS	35%	39%	14%	7%	3%	1%	61%	39%

Counts based on Preliminary September 30, 2024 Enrollment



SBPT Option Recommendation Student Demographics (continued)

School	Option Rec. Race/Ethnicity Enrollment Percentage PK-12th						Option Rec. FARMS Enrolled Percentage PK-12th	
	Black	White	Hispanic or Latino	Two Or more Races/Ethnicities	Asian	Other	Yes	No
Beaver Run ES	54%	17%	17%	8%	2%	1%	76%	24%
East Salisbury ES	54%	14%	23%	8%	1%	0%	79%	21%
Charles H. Chipman ES	67%	12%	11%	8%	1%	1%	77%	23%
Glen Avenue ES	67%	12%	12%	7%	1%	1%	86%	14%
Fruitland Primary School	32%	37%	16%	11%	4%	0%	61%	39%
Fruitland Intermediate School	29%	42%	15%	9%	4%	1%	61%	39%
Northwestern ES	12%	76%	3%	8%	0%	0%	55%	45%
Pemberton ES	60%	21%	7%	7%	3%	1%	68%	32%
Pinehurst ES	56%	20%	16%	5%	2%	0%	71%	29%
Prince Street ES	52%	8%	31%	8%	0%	1%	79%	21%
West Salisbury ES	55%	10%	24%	7%	2%	3%	75%	25%
North Salisbury ES	38%	33%	14%	9%	5%	1%	55%	45%
Westside Primary School	12%	65%	11%	10%	2%	0%	59%	41%
Westside Intermediate School	11%	65%	13%	10%	1%	1%	52%	48%
Willards ES	5%	76%	8%	10%	0%	0%	60%	40%
Pittsville ES/MS	5%	74%	10%	8%	2%	0%	63%	37%
Total Study Area ES	42%	32%	15%	8%	2%	1%	69%	31%
Bennett MS	37%	32%	19%	8%	4%	1%	64%	36%
Salisbury MS	52%	23%	11%	8%	5%	1%	67%	33%
Wicomico MS	51%	17%	21%	8%	3%	1%	74%	26%
Total MS	46%	24%	17%	8%	4%	1%	68%	32%
Mardela MS/HS	11%	74%	6%	8%	1%	0%	49%	51%
James M. Bennett HS	37%	35%	16%	7%	4%	1%	59%	41%
Parkside HS	33%	45%	12%	6%	3%	1%	58%	42%
Wicomico HS	50%	18%	20%	9%	3%	1%	74%	26%
Total HS	35%	39%	14%	7%	3%	1%	61%	39%

Counts based on Preliminary September 30, 2024 Enrollment



SBPT Option Recommendation Student Impacts

The following tables reflect the SBPT Option Recommendation in terms of student impacts. The first tables show the total number of students impacted (moved) in each option. The following tables show the number of students who move or do not for each school in each scenario.

Student Impact Estimates	
Option	Total PK-5 Live and Attend In Students Impacted
ES Option Rec.	705
*Counts based on 9/30/204 Student Enrollment.	

Student Impact Estimates	
Option	Total 6-8 Live and Attend In Students Impacted
MS Option Rec.	37
*Counts based on 9/30/204 Student Enrollment.	

Student Impact Estimates	
Option	Total 9-12 Live and Attend In Students Impacted
HS Option Rec.	0
*Counts based on 9/30/204 Student Enrollment.	

2023-24 ES Boundary	ES Option Rec. Boundary	Total PK-5 Live and Attend In Students
Beaver Run (PK-2) / East Salisbury (3-5)	Beaver Run (PK-2) / East Salisbury (3-5)	1118
Beaver Run (PK-2) / East Salisbury (3-5)	Willards (PK-3) / Pittsville ES/MS (4-8)	74
Chipman (PK-1) / Glen Avenue (2-5)	Chipman (PK-1) / Glen Avenue (2-5)	655
Fruitland Primary (PK-2) / Fruitland Intern. (3-5)	Fruitland Primary (PK-2) / Fruitland Intern. (3-5)	726
Northwestern ES (PK-5)	Northwestern ES (PK-5)	234
Northwestern ES (PK-5)	Westside Primary (PK-1) / Westside Intern. (2-5)	78
Pemberton ES (PK-5)	Pemberton ES (PK-5)	443
Pinehurst ES (PK-5)	Chipman (PK-1) / Glen Avenue (2-5)	92
Pinehurst ES (PK-5)	Fruitland Primary (PK-2) / Fruitland Intern. (3-5)	19
Pinehurst ES (PK-5)	Pemberton ES (PK-5)	71
Pinehurst ES (PK-5)	Pinehurst ES (PK-5)	322
Pinehurst ES (PK-5)	West Salisbury (PK-2) / North Salisbury (3-5)	7
Prince Street ES (PK-5)	Chipman (PK-1) / Glen Avenue (2-5)	67
Prince Street ES (PK-5)	Fruitland Primary (PK-2) / Fruitland Intern. (3-5)	105
Prince Street ES (PK-5)	Pinehurst ES (PK-5)	152
Prince Street ES (PK-5)	Prince Street ES (PK-5)	602
West Salisbury (PK-2) / North Salisbury (3-5)	Beaver Run (PK-2) / East Salisbury (3-5)	40
West Salisbury (PK-2) / North Salisbury (3-5)	West Salisbury (PK-2) / North Salisbury (3-5)	646
Westside Primary (PK-1) / Westside Intern. (2-5)	Westside Primary (PK-1) / Westside Intern. (2-5)	493
Willards (PK-3) / Pittsville ES/MS (4-8)	Willards (PK-3) / Pittsville ES/MS (4-8)	388

2023-24 MS Boundary	MS Option Rec. Boundary	Total 6-8 Live and Attend In Students
Bennett MS (6-8)	Bennett MS (6-8)	898
Bennett MS (6-8)	Wicomico MS (6-8)	13
Mardela MS/HS (6-12)	Mardela MS/HS (6-12)	264
Salisbury MS (6-8)	Salisbury MS (6-8)	744
Wicomico MS (6-8)	Wicomico MS (6-8)	775
Wicomico MS (6-8)	Pittsville ES/MS (4-8)	24
Pittsville ES/MS (4-8)	Pittsville ES/MS (4-8)	174

2023-24 HS Boundary	HS Option Rec. Boundary	Total 9-12 Live and Attend In Students
James M. Bennett HS (9-12)	James M. Bennett HS (9-12)	1301
Mardela MS/HS (6-12)	Mardela MS/HS (6-12)	329
Parkside HS (9-12)	Parkside HS (9-12)	1116
Wicomico HS (9-12)	Wicomico HS (9-12)	1246

Key: Green represents “Live & Attend In” students who live in the boundary and are not impacted by the option. Pink represents the number of “Live & Attend In” students who live in the boundary and are impacted by the option.



Feeder Patterns

The following tables reflect the elementary to middle and middle to high school feeder patterns. The tables show the percent of students that progress from each elementary to their corresponding zoned middle schools, as well as the percent of students that progress from each middle school to their corresponding high school.

Boundary Configuration	ES to MS Splits	MS to HS Splits
Current	6	4
Option Rec.	4	5

*This table highlights the total splits that exist in each boundary configuration. A split occurs when the progression of students from one ES or MS feeds into 2 or more MS or HS.

2023-24 ES Boundary	2023-24 MS Boundary	ES Attendance
Beaver Run (PK-2) / East Salisbury (3-5)	Wicomico MS (6-8)	100%
Chipman (PK-1) / Glen Avenue (2-5)	Bennett MS (6-8)	5%
Chipman (PK-1) / Glen Avenue (2-5)	Salisbury MS (6-8)	51%
Chipman (PK-1) / Glen Avenue (2-5)	Wicomico MS (6-8)	43%
Fruitland Primary (PK-2) / Fruitland Interm. (3-5)	Bennett MS (6-8)	100%
Northwestern ES (PK-5)	Mardela MS/HS (6-12)	100%
Pemberton ES (PK-5)	Salisbury MS (6-8)	100%
Pinehurst ES (PK-5)	Bennett MS (6-8)	74%
Pinehurst ES (PK-5)	Salisbury MS (6-8)	26%
Prince Street ES (PK-5)	Bennett MS (6-8)	76%
Prince Street ES (PK-5)	Wicomico MS (6-8)	24%
West Salisbury (PK-2) / North Salisbury (3-5)	Salisbury MS (6-8)	64%
West Salisbury (PK-2) / North Salisbury (3-5)	Wicomico MS (6-8)	36%
Westside Primary (PK-1) / Westside Interm. (2-5)	Mardela MS/HS (6-12)	36%
Westside Primary (PK-1) / Westside Interm. (2-5)	Salisbury MS (6-8)	64%
Willards (PK-3)	Pittsville ES/MS (4-8)	100%

2023-24 MS Boundary	2023-24 HS Boundary	MS Attendance
Bennett MS (6-8)	James M. Bennett HS (9-12)	64%
Bennett MS (6-8)	Parkside HS (9-12)	36%
Mardela MS/HS (6-12)	Mardela MS/HS (6-12)	100%
Salisbury MS (6-8)	James M. Bennett HS (9-12)	53%
Salisbury MS (6-8)	Parkside HS (9-12)	19%
Salisbury MS (6-8)	Wicomico HS (9-12)	28%
Wicomico MS (6-8)	Parkside HS (9-12)	12%
Wicomico MS (6-8)	Wicomico HS (9-12)	88%
Pittsville ES/MS (4-8)	Parkside HS (9-12)	100%

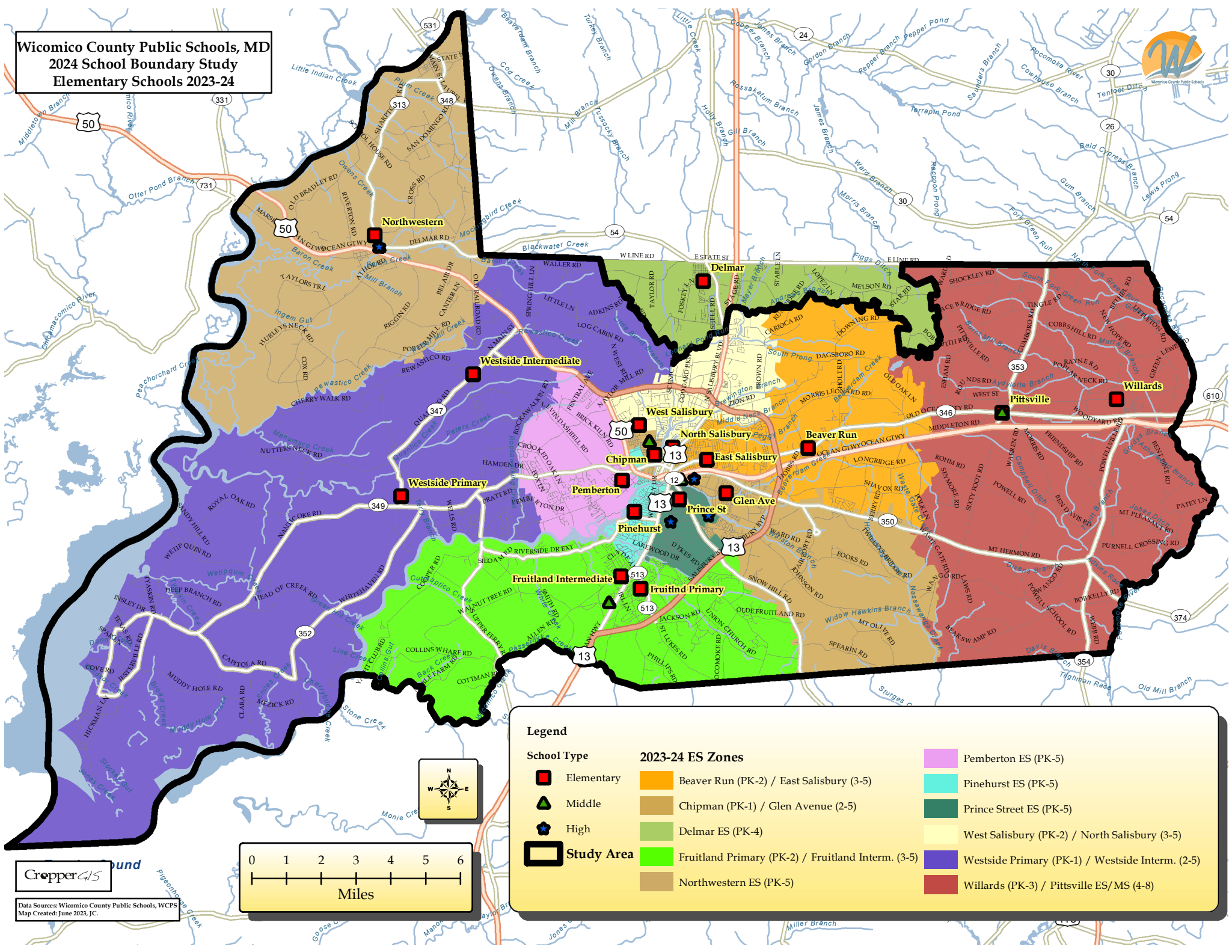


Feeder Patterns (continued)

Option Rec. ES Boundary	Option Rec. MS Boundary	ES Attendance
Beaver Run (PK-2) / East Salisbury (3-5)	Wicomico MS (6-8)	100%
Chipman (PK-1) / Glen Avenue (2-5)	Salisbury MS (6-8)	50%
Chipman (PK-1) / Glen Avenue (2-5)	Wicomico MS (6-8)	50%
Fruitland Primary (PK-2) / Fruitland Interm. (3-5)	Bennett MS (6-8)	100%
Northwestern ES (PK-5)	Mardela MS/HS (6-12)	100%
Pemberton ES (PK-5)	Salisbury MS (6-8)	100%
Pinehurst ES (PK-5)	Bennett MS (6-8)	100%
Prince Street ES (PK-5)	Bennett MS (6-8)	78%
Prince Street ES (PK-5)	Wicomico MS (6-8)	22%
West Salisbury (PK-2) / North Salisbury (3-5)	Salisbury MS (6-8)	69%
West Salisbury (PK-2) / North Salisbury (3-5)	Wicomico MS (6-8)	31%
Westside Primary (PK-1) / Westside Interm. (2-5)	Mardela MS/HS (6-12)	45%
Westside Primary (PK-1) / Westside Interm. (2-5)	Salisbury MS (6-8)	55%
Willards (PK-3)	Pittsville ES/MS (4-8)	100%

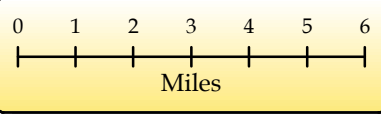
Option Rec. MS Boundary	Option Rec. HS Boundary	MS Attendance
Bennett MS (6-8)	James M. Bennett HS (9-12)	65%
Bennett MS (6-8)	Parkside HS (9-12)	35%
Mardela MS/HS (6-12)	Mardela MS/HS (6-12)	100%
Salisbury MS (6-8)	James M. Bennett HS (9-12)	53%
Salisbury MS (6-8)	Parkside HS (9-12)	19%
Salisbury MS (6-8)	Wicomico HS (9-12)	28%
Wicomico MS (6-8)	Parkside HS (9-12)	14%
Wicomico MS (6-8)	Wicomico HS (9-12)	86%
Pittsville ES/MS (4-8)	Parkside HS (9-12)	84%
Pittsville ES/MS (4-8)	Wicomico HS (9-12)	16%

**Wicomico County Public Schools, MD
2024 School Boundary Study
Elementary Schools 2023-24**



Legend

School Type	2023-24 ES Zones	
Elementary	Beaver Run (PK-2) / East Salisbury (3-5)	Pemberton ES (PK-5)
Middle	Chipman (PK-1) / Glen Avenue (2-5)	Pinehurst ES (PK-5)
High	Delmar ES (PK-4)	Prince Street ES (PK-5)
Study Area	Fruitland Primary (PK-2) / Fruitland Intern. (3-5)	West Salisbury (PK-2) / North Salisbury (3-5)
	Northwestern ES (PK-5)	Willards (PK-3) / Pittsville ES/MS (4-8)



CropperGIS
und
Data Source: Wicomico County Public Schools, WCPS
Map Created: June 2023, J.C.

Wicomico County Public Schools, MD
2024 School Boundary Study
Elementary Schools 2023-24



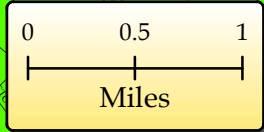
Legend

School Type

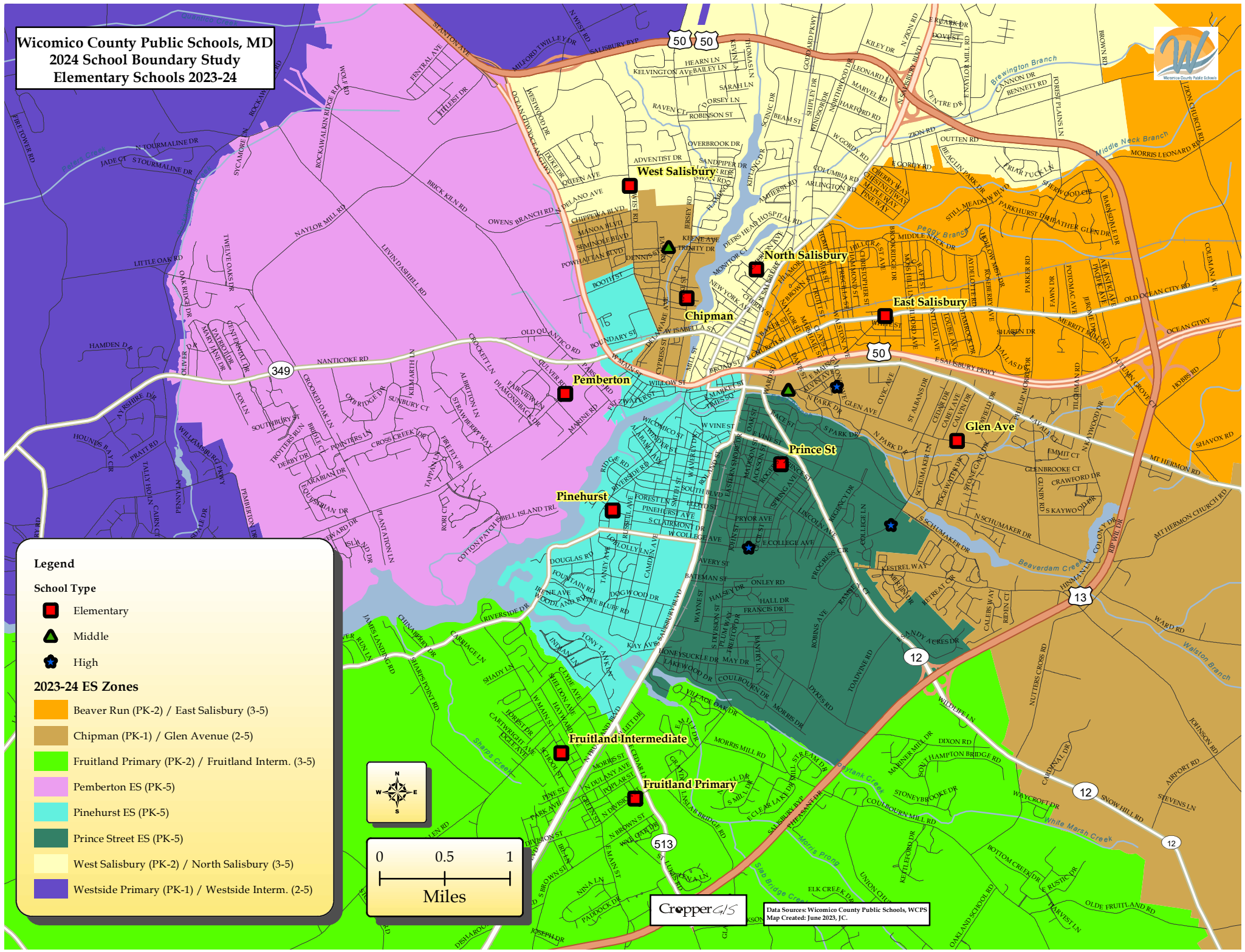
- Elementary
- ▲ Middle
- ★ High

2023-24 ES Zones

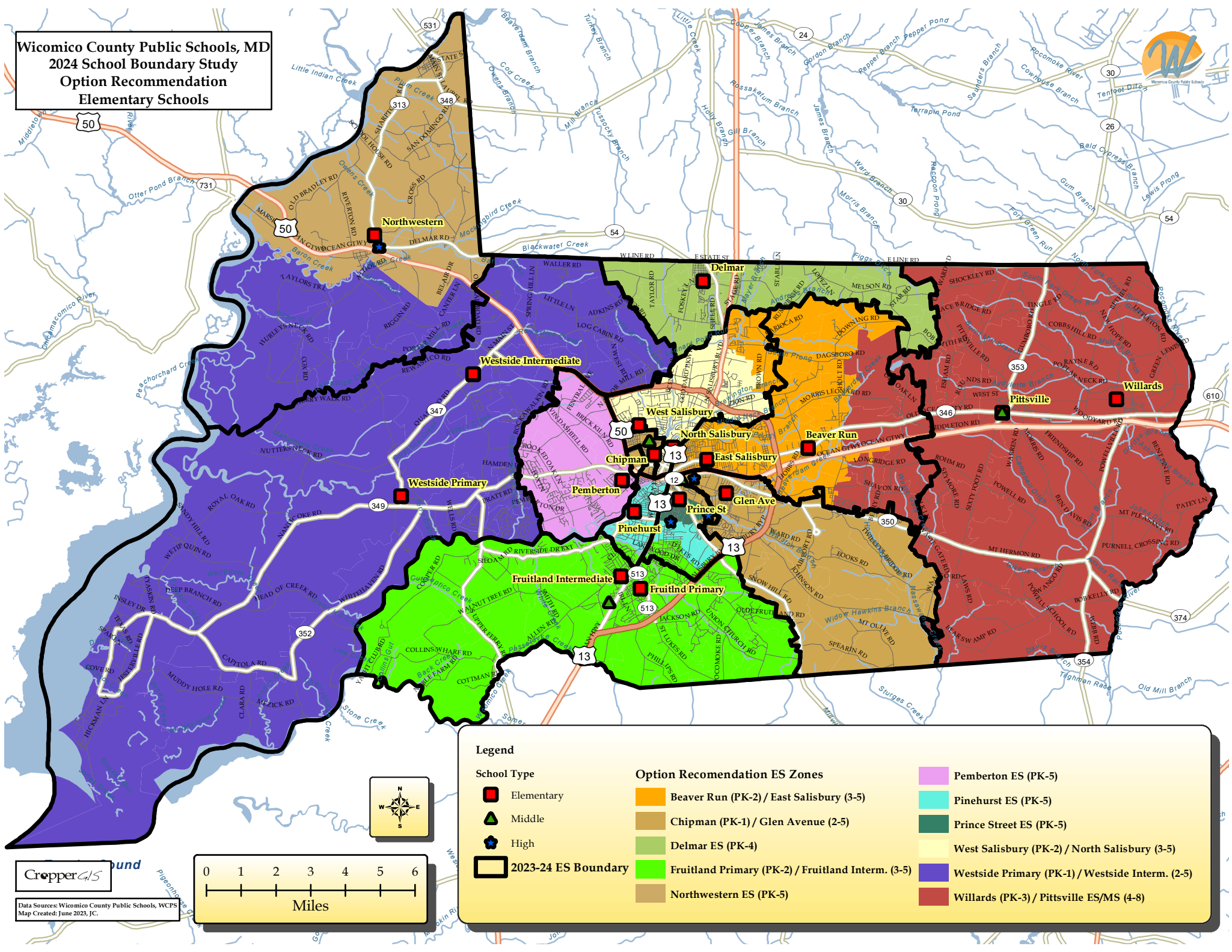
- Beaver Run (PK-2) / East Salisbury (3-5)
- Chipman (PK-1) / Glen Avenue (2-5)
- Fruitland Primary (PK-2) / Fruitland Intern. (3-5)
- Pemberton ES (PK-5)
- Pinehurst ES (PK-5)
- Prince Street ES (PK-5)
- West Salisbury (PK-2) / North Salisbury (3-5)
- Westside Primary (PK-1) / Westside Intern. (2-5)



CropperGIS
 Data Sources: Wicomico County Public Schools, WPCS
 Map Created: June 2023, J.C.

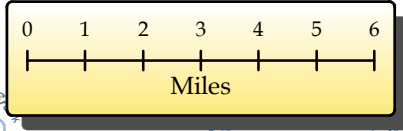
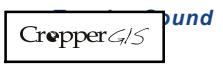


Wicomico County Public Schools, MD
2024 School Boundary Study
Option Recommendation
Elementary Schools



Legend

- | | | |
|---------------------|--|--|
| School Type | Option Recommendation ES Zones | |
| Elementary | Beaver Run (PK-2) / East Salisbury (3-5) | Pemberton ES (PK-5) |
| Middle | Chipman (PK-1) / Glen Avenue (2-5) | Pinehurst ES (PK-5) |
| High | Delmar ES (PK-4) | Prince Street ES (PK-5) |
| 2023-24 ES Boundary | Fruitland Primary (PK-2) / Fruitland Intern. (3-5) | West Salisbury (PK-2) / North Salisbury (3-5) |
| | Northwestern ES (PK-5) | Westside Primary (PK-1) / Westside Intern. (2-5) |
| | | Willards (PK-3) / Pittsville ES/MS (4-8) |



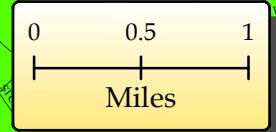
Data Sources: Wicomico County Public Schools, WCPS
 Map Created: June 2023, J.C.

Wicomico County Public Schools, MD
2024 School Boundary Study
Option Recommendation
Elementary Schools

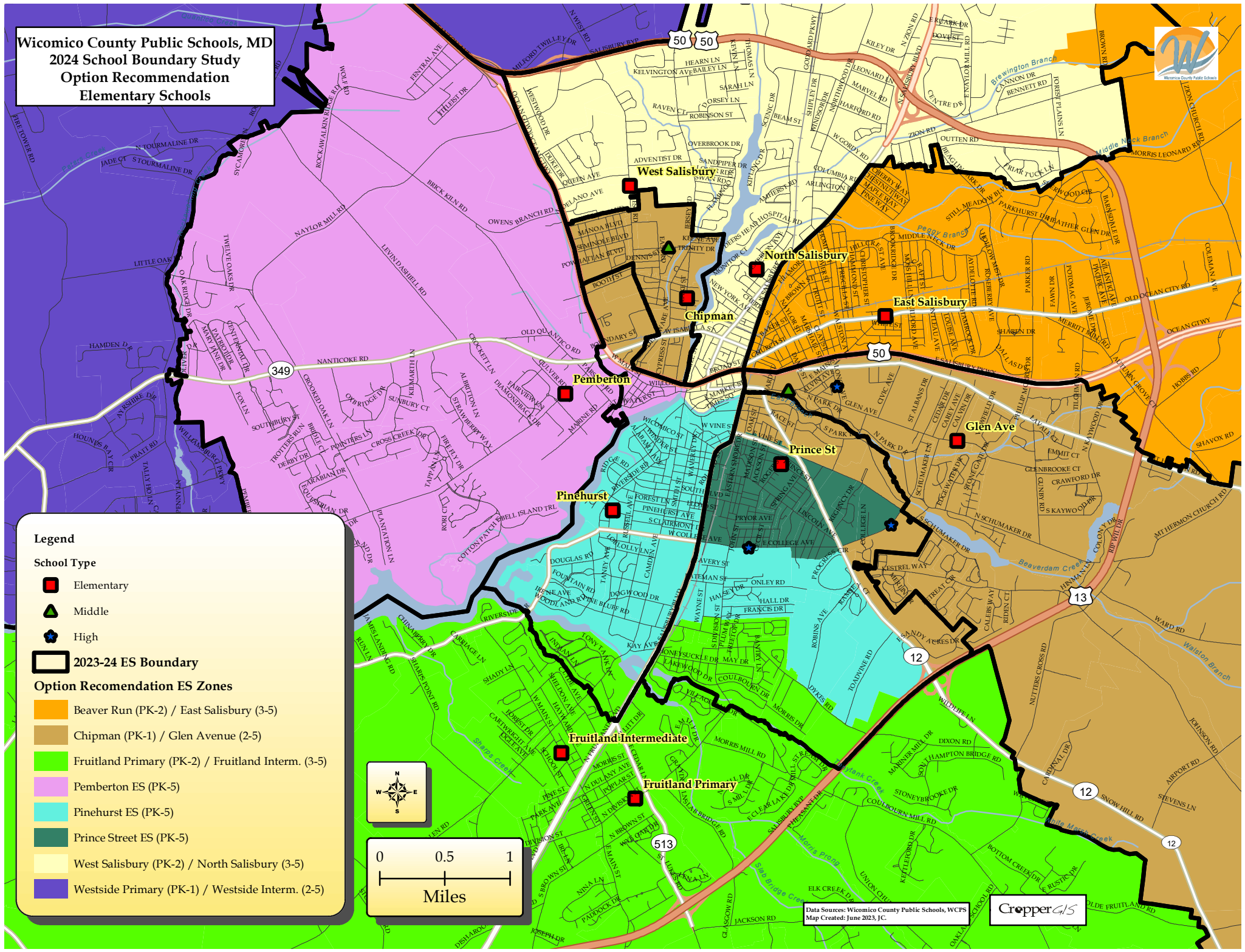


- Legend**
- Elementary
 - ▲ Middle
 - ★ High
 - 2023-24 ES Boundary

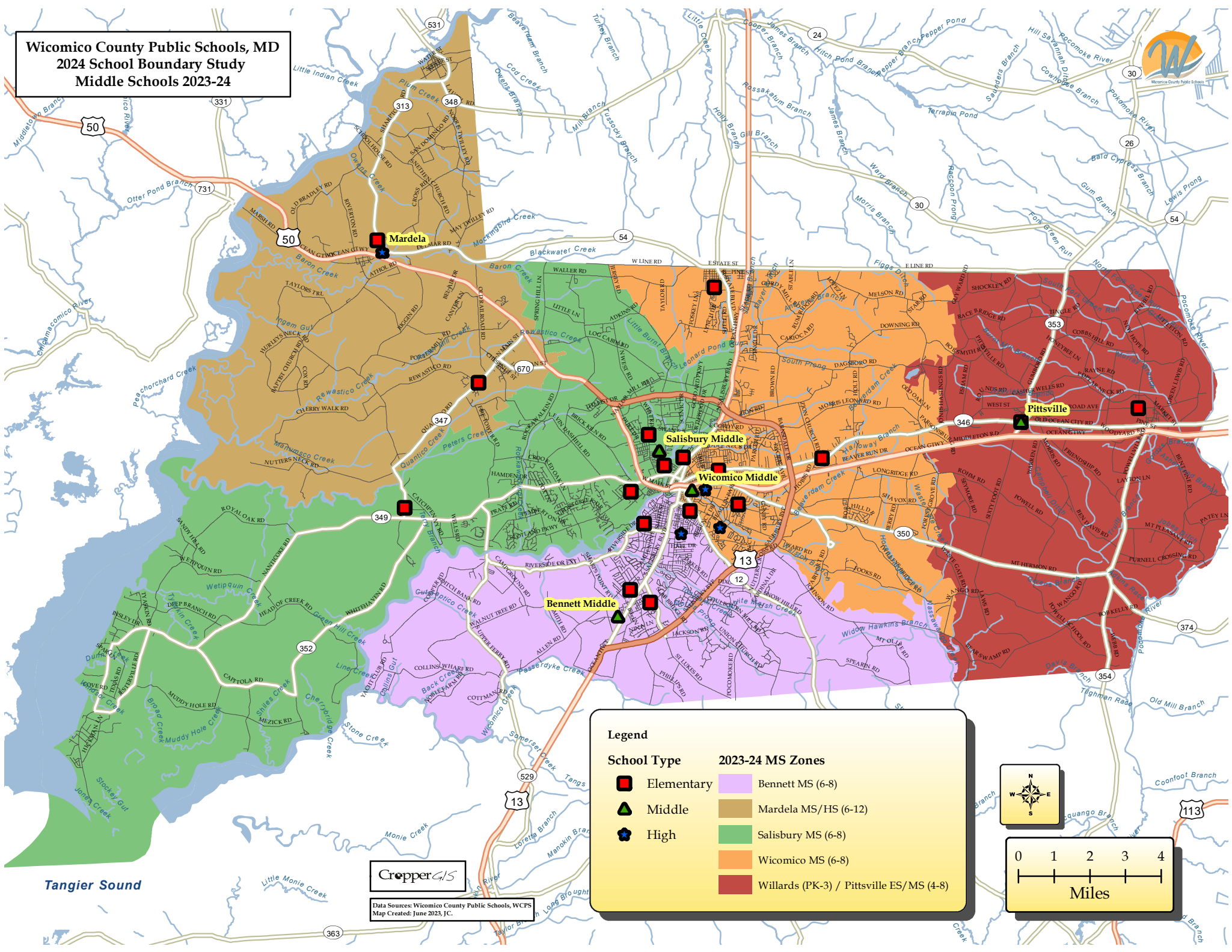
- Option Recommendation ES Zones**
- Beaver Run (PK-2) / East Salisbury (3-5)
 - Chipman (PK-1) / Glen Avenue (2-5)
 - Fruitland Primary (PK-2) / Fruitland Intern. (3-5)
 - Pemberton ES (PK-5)
 - Pinehurst ES (PK-5)
 - Prince Street ES (PK-5)
 - West Salisbury (PK-2) / North Salisbury (3-5)
 - Westside Primary (PK-1) / Westside Intern. (2-5)



Data Sources: Wicomico County Public Schools, WCPS
 Map Created: June 2023, J.C.

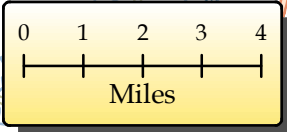


**Wicomico County Public Schools, MD
2024 School Boundary Study
Middle Schools 2023-24**



Legend

School Type	2023-24 MS Zones
Elementary	Bennett MS (6-8)
Middle	Mardela MS/HS (6-12)
High	Salisbury MS (6-8)
	Wicomico MS (6-8)
	Willards (PK-3) / Pittsville ES/MS (4-8)

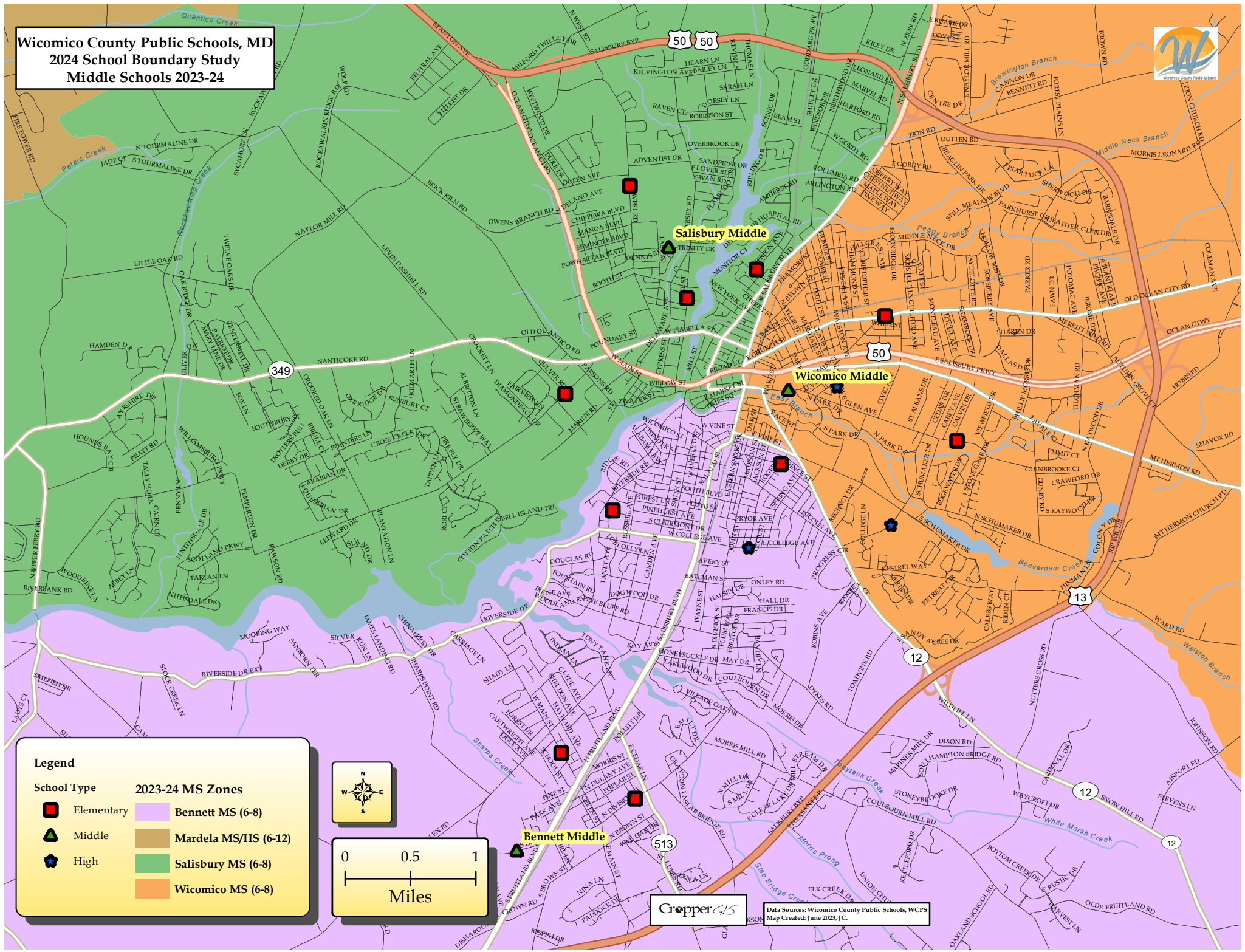


CropperGIS

Data Sources: Wicomico County Public Schools, WCPS
Map Created: June 2023, J.C.

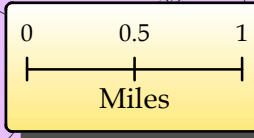
Tangier Sound

Wicomico County Public Schools, MD
2024 School Boundary Study
Middle Schools 2023-24



Legend

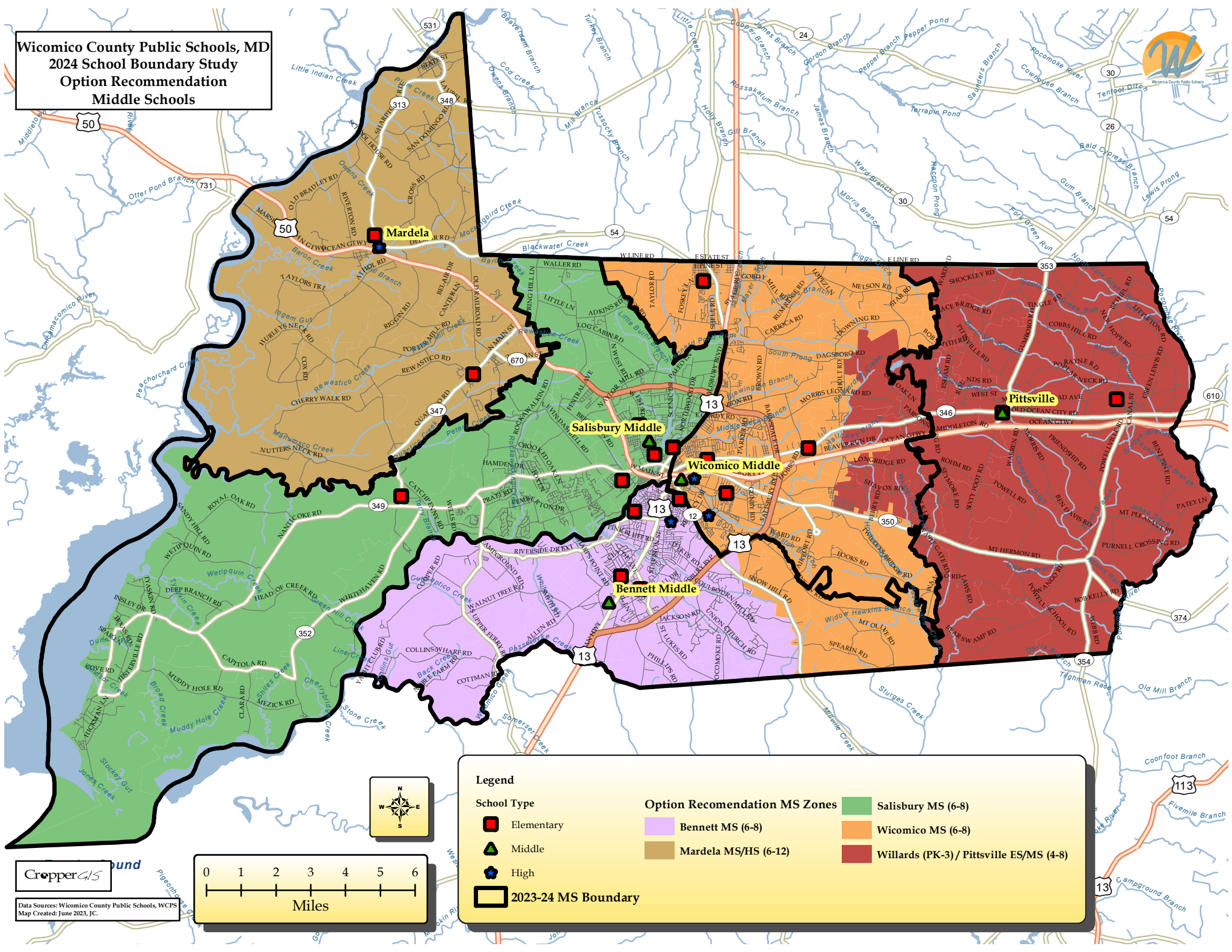
School Type	2023-24 MS Zones
Elementary	Bennett MS (6-8)
Middle	Mardela MS/HS (6-12)
High	Salisbury MS (6-8)
	Wicomico MS (6-8)



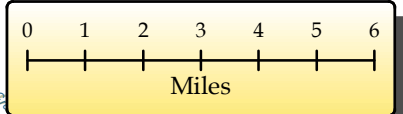
CropperGIS

Data Sources: Wicomico County Public Schools, WCPS
 Map Created: June 2023, J.C.

Wicomico County Public Schools, MD
2024 School Boundary Study
Option Recommendation
Middle Schools



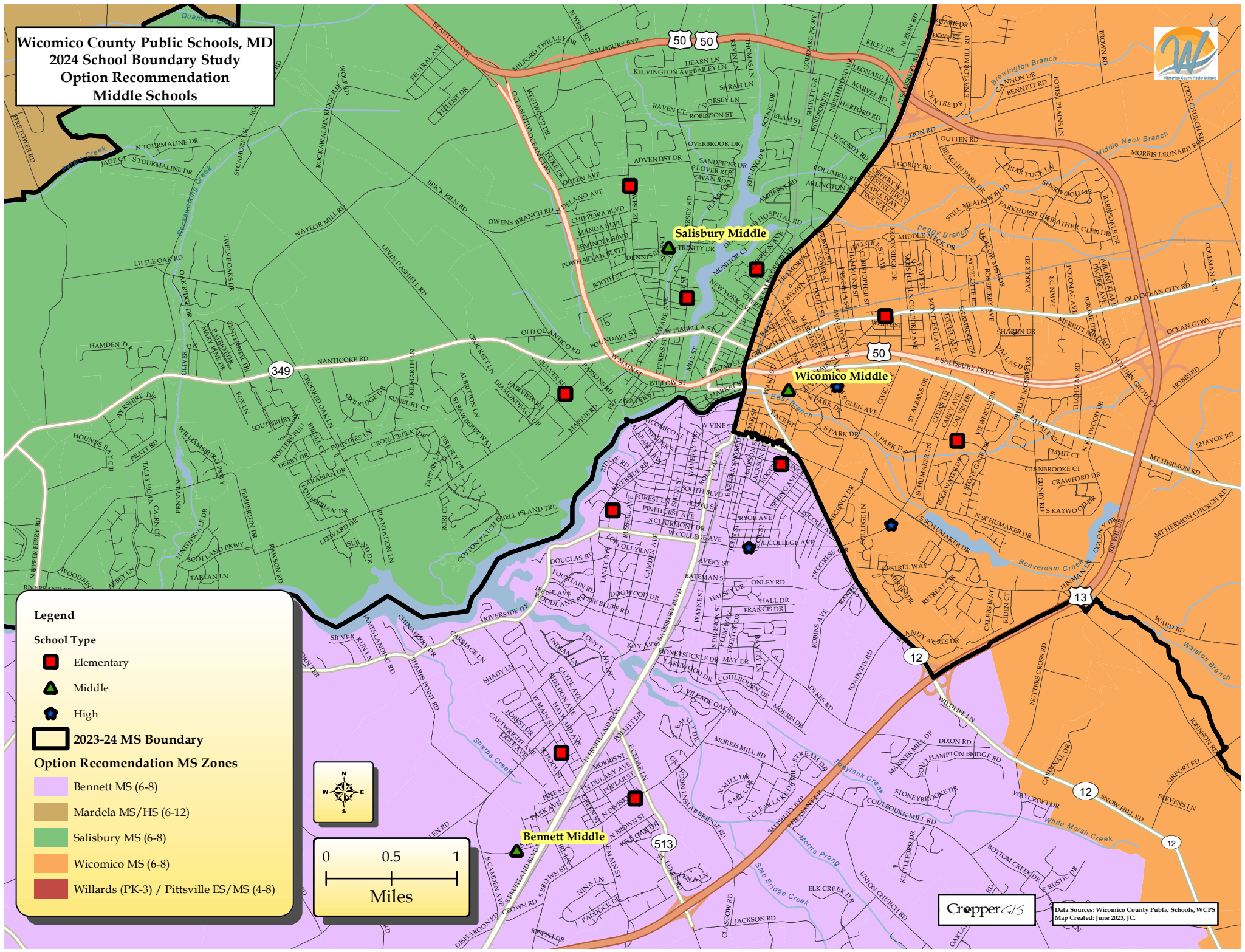
CropperGIS
 Data Sources: Wicomico County Public Schools, WCPS
 Map Created: June 2023, J.C.



Legend

School Type	Option Recommendation MS Zones	Salisbury MS (6-8)
Elementary	Bennett MS (6-8)	Wicomico MS (6-8)
Middle	Mardela MS/HS (6-12)	Willards (PK-3)/ Pittville ES/MS (4-8)
High		
2023-24 MS Boundary		

Wicomico County Public Schools, MD
2024 School Boundary Study
Option Recommendation
Middle Schools



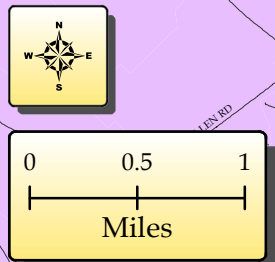
Legend

School Type

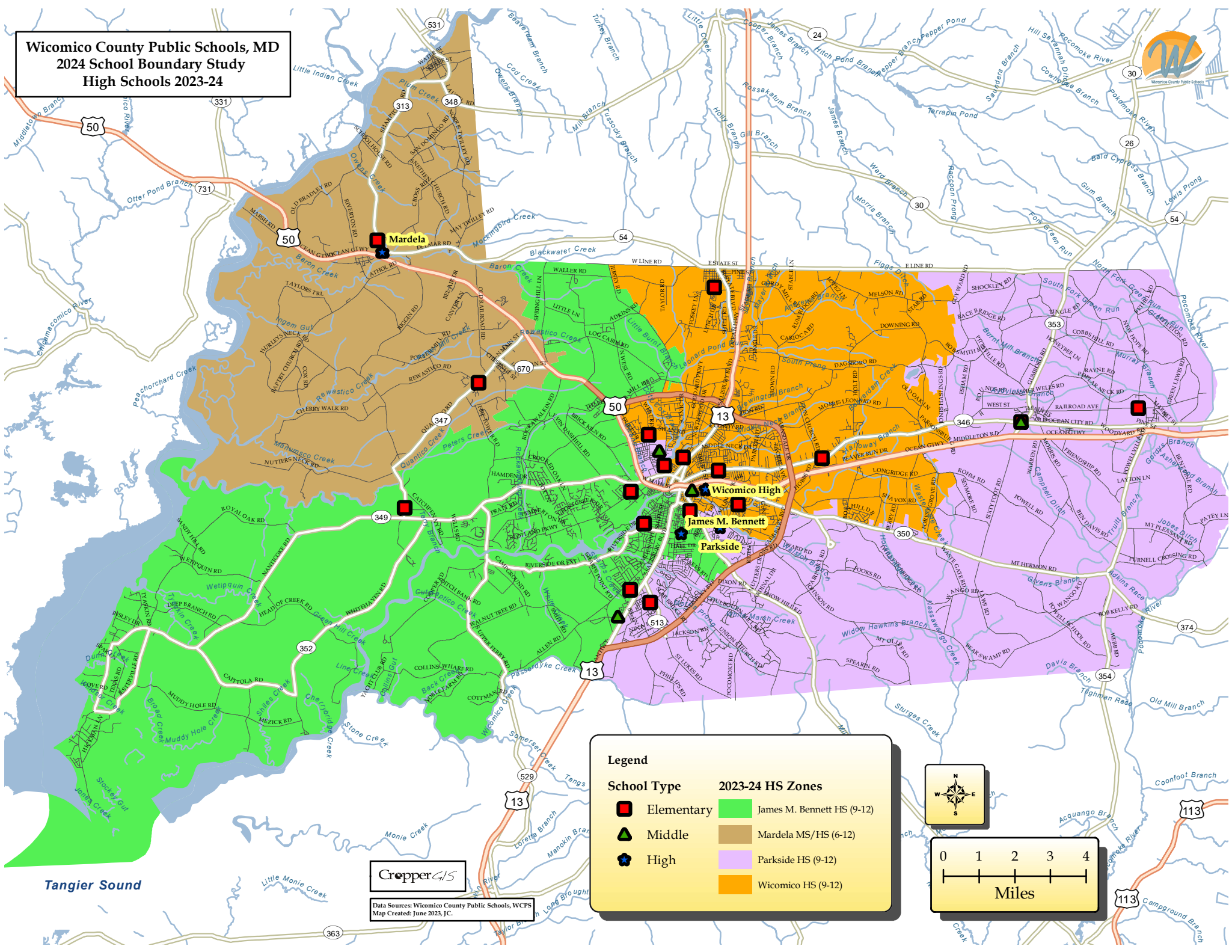
- Elementary
- ▲ Middle
- ★ High
- 2023-24 MS Boundary

Option Recommendation MS Zones

- Bennett MS (6-8)
- Mardela MS/IHS (6-12)
- Salisbury MS (6-8)
- Wicomico MS (6-8)
- Willards (PK-3) / Pittsville ES/MS (4-8)

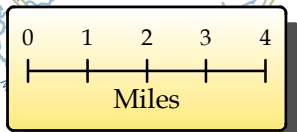


**Wicomico County Public Schools, MD
2024 School Boundary Study
High Schools 2023-24**



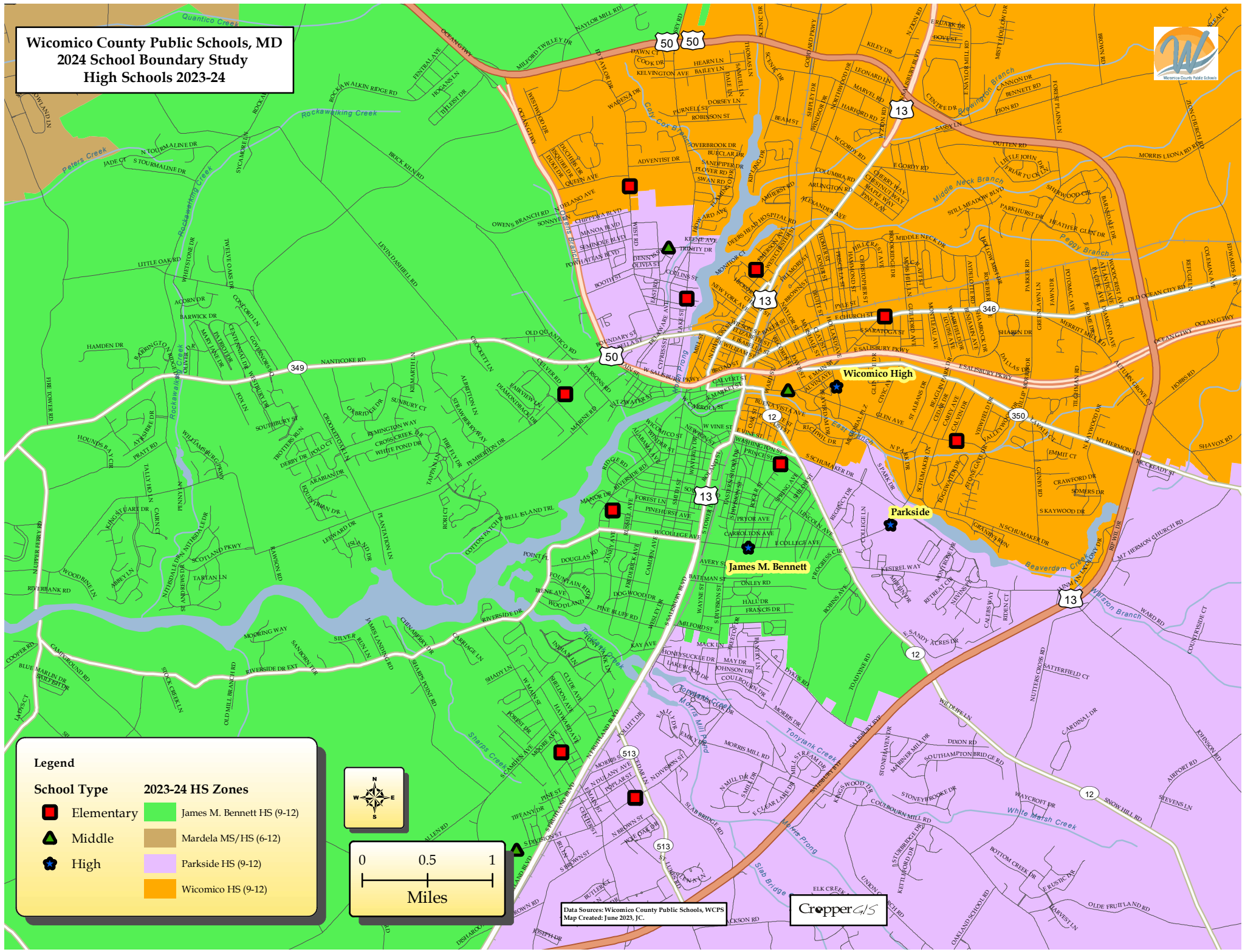
Legend

School Type	2023-24 HS Zones
Elementary	James M. Bennett HS (9-12)
Middle	Mardela MS/HS (6-12)
High	Parkside HS (9-12)
	Wicomico HS (9-12)



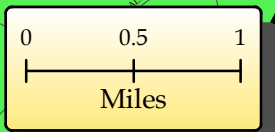
CropperGIS
Data Sources: Wicomico County Public Schools, WCPS
Map Created: June 2023, J.C.

**Wicomico County Public Schools, MD
2024 School Boundary Study
High Schools 2023-24**



Legend

School Type	2023-24 HS Zones
Elementary	James M. Bennett HS (9-12)
Middle	Mardela MS/HS (6-12)
High	Parkside HS (9-12)
	Wicomico HS (9-12)



Data Sources: Wicomico County Public Schools, WCPs
Map Created: June 2023, JC.

