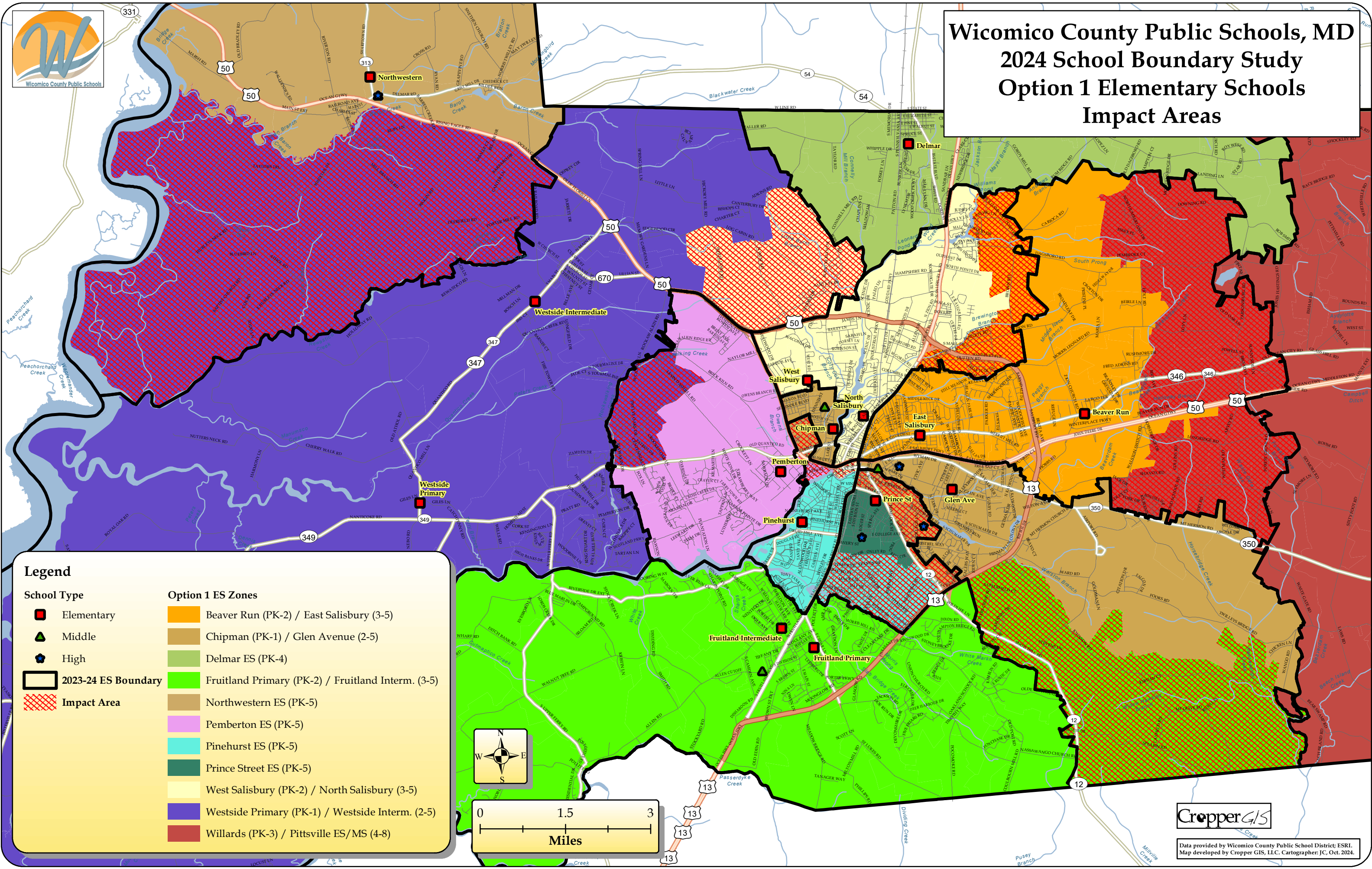


Wicomico County Public Schools, MD

2024 School Boundary Study

Option 1 Elementary Schools

Impact Areas



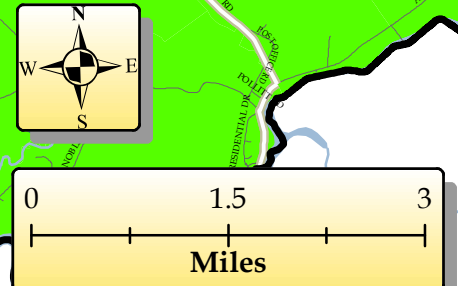
Legend

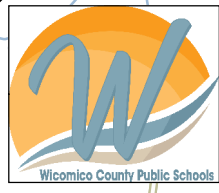
School Type

- Elementary
- ▲ Middle
- ★ High
- 2023-24 ES Boundary
- Impact Area

Option 1 ES Zones

- Beaver Run (PK-2) / East Salisbury (3-5)
- Chipman (PK-1) / Glen Avenue (2-5)
- Delmar ES (PK-4)
- Fruitland Primary (PK-2) / Fruitland Intern. (3-5)
- Northwestern ES (PK-5)
- Pemberton ES (PK-5)
- Pinehurst ES (PK-5)
- Prince Street ES (PK-5)
- West Salisbury (PK-2) / North Salisbury (3-5)
- Westside Primary (PK-1) / Westside Intern. (2-5)
- Willards (PK-3) / Pittsville ES/MS (4-8)



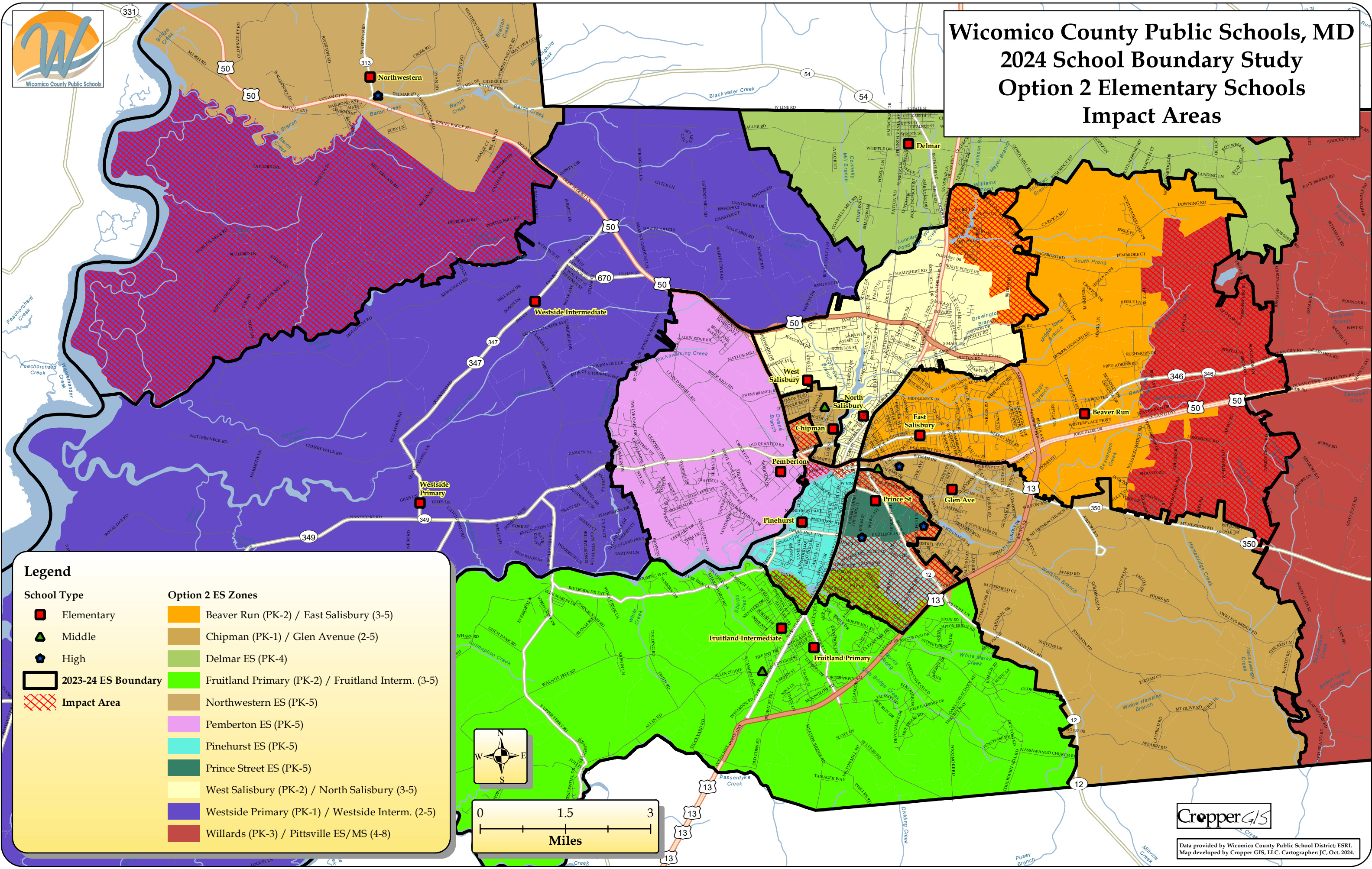


Wicomico County Public Schools, MD

2024 School Boundary Study

Option 2 Elementary Schools

Impact Areas



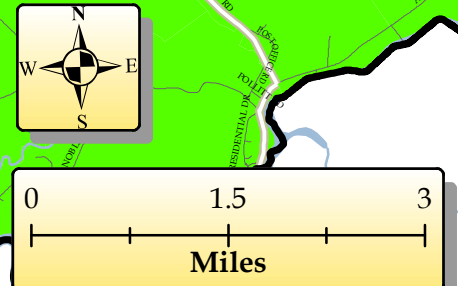
Legend

School Type

- Elementary
- ▲ Middle
- ★ High
- 2023-24 ES Boundary
- Impact Area

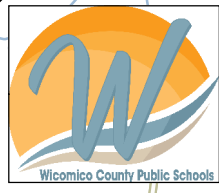
Option 2 ES Zones

- Beaver Run (PK-2) / East Salisbury (3-5)
- Chipman (PK-1) / Glen Avenue (2-5)
- Delmar ES (PK-4)
- Fruitland Primary (PK-2) / Fruitland Intern. (3-5)
- Northwestern ES (PK-5)
- Pemberton ES (PK-5)
- Pinehurst ES (PK-5)
- Prince Street ES (PK-5)
- West Salisbury (PK-2) / North Salisbury (3-5)
- Westside Primary (PK-1) / Westside Intern. (2-5)
- Willards (PK-3) / Pittsville ES/MS (4-8)



CropperGIS

Data provided by Wicomico County Public School District; ESRI.
Map developed by Cropper GIS, LLC. Cartographer: JC, Oct. 2024.

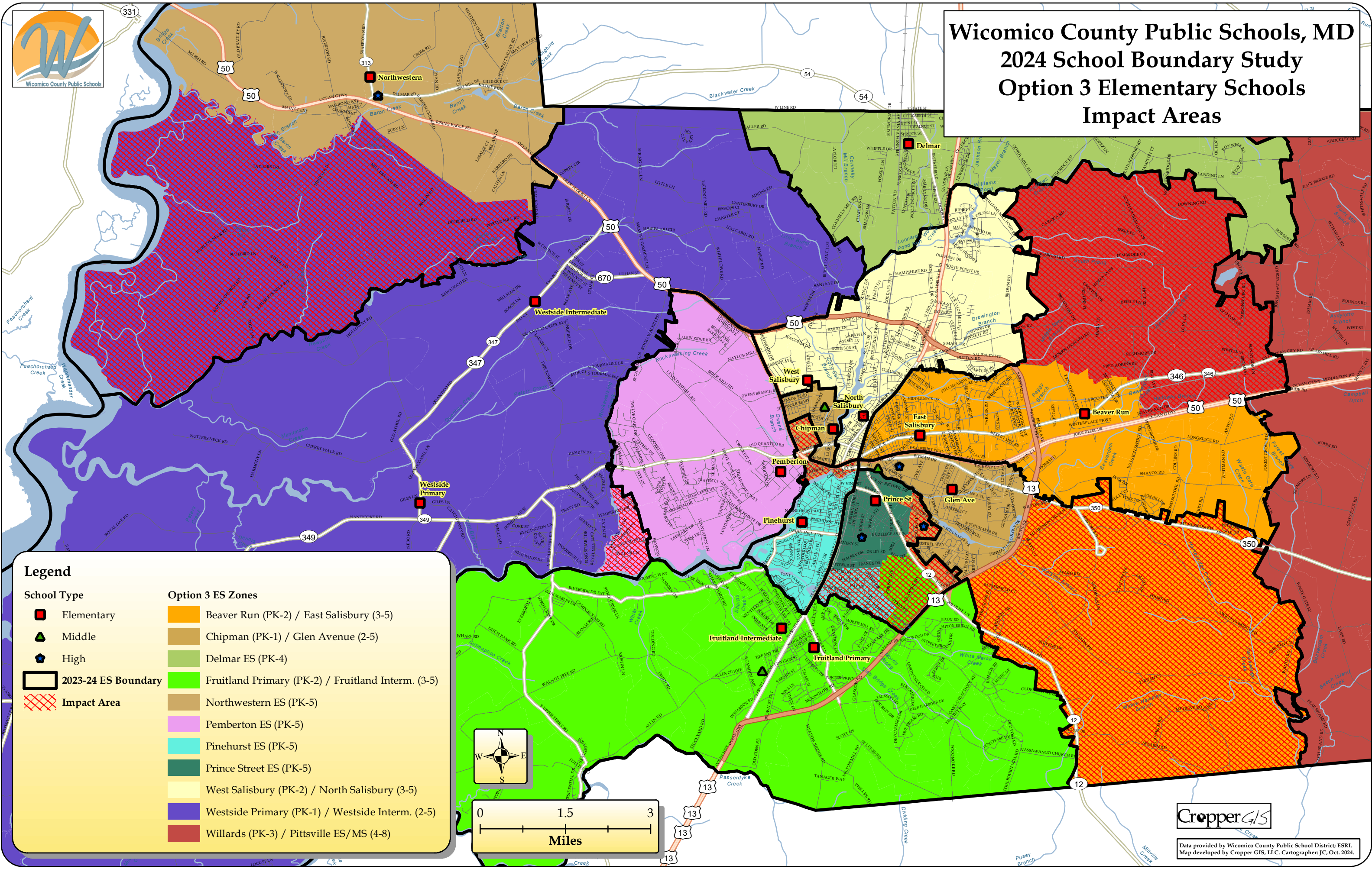


Wicomico County Public Schools, MD

2024 School Boundary Study

Option 3 Elementary Schools

Impact Areas



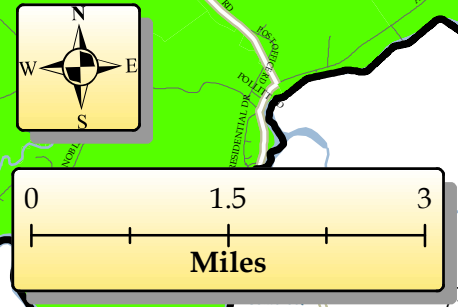
Legend

School Type

- Elementary
- ▲ Middle
- ★ High
- 2023-24 ES Boundary
- Impact Area

Option 3 ES Zones

- Beaver Run (PK-2) / East Salisbury (3-5)
- Chipman (PK-1) / Glen Avenue (2-5)
- Delmar ES (PK-4)
- Fruitland Primary (PK-2) / Fruitland Intern. (3-5)
- Northwestern ES (PK-5)
- Pemberton ES (PK-5)
- Pinehurst ES (PK-5)
- Prince Street ES (PK-5)
- West Salisbury (PK-2) / North Salisbury (3-5)
- Westside Primary (PK-1) / Westside Intern. (2-5)
- Willards (PK-3) / Pittsville ES/MS (4-8)



CropperGIS

Data provided by Wicomico County Public School District; ESRI.
Map developed by Cropper GIS, LLC. Cartographer: JC, Oct. 2024.